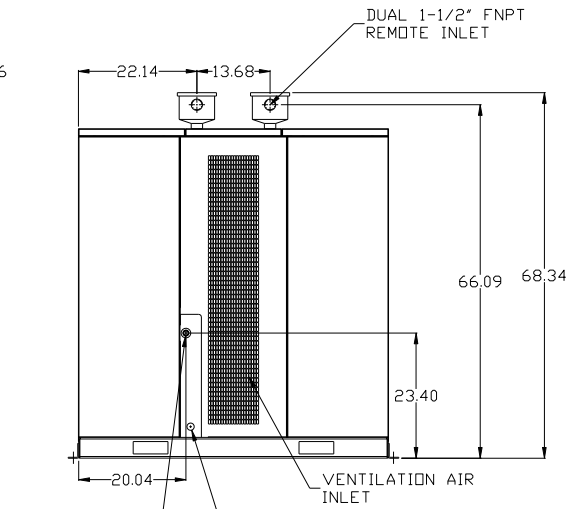
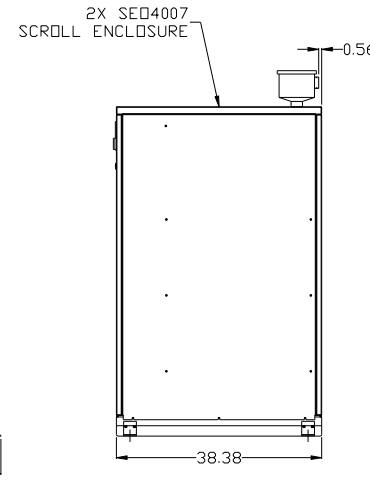
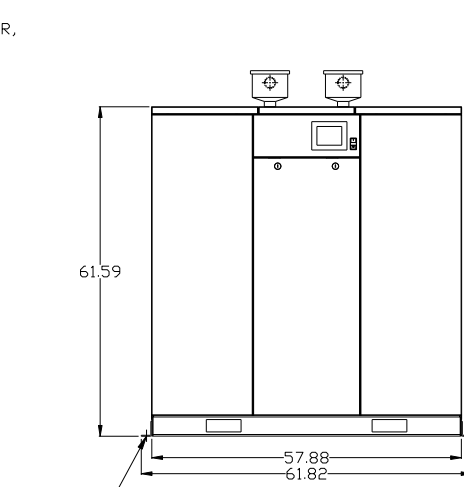
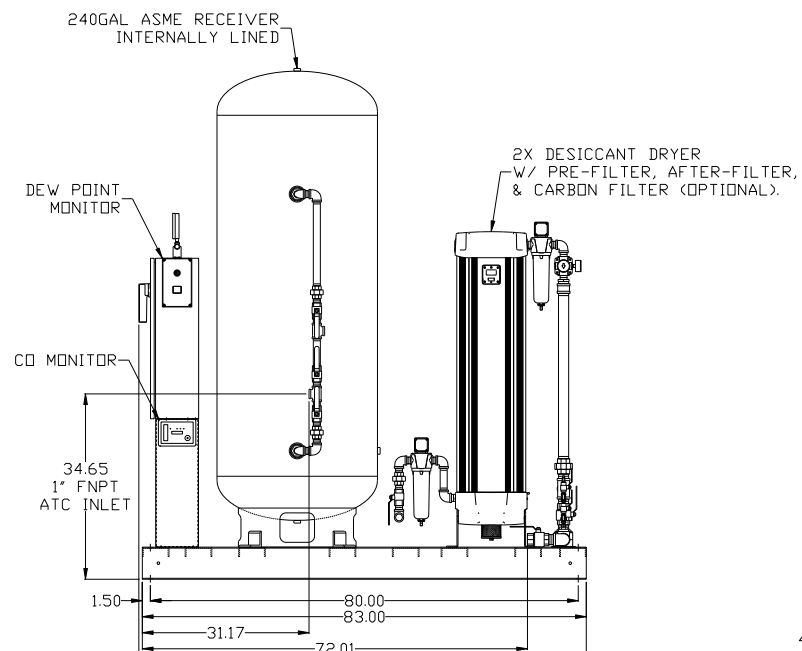
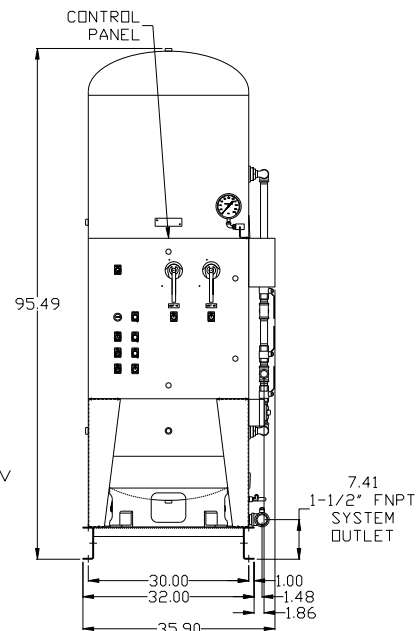
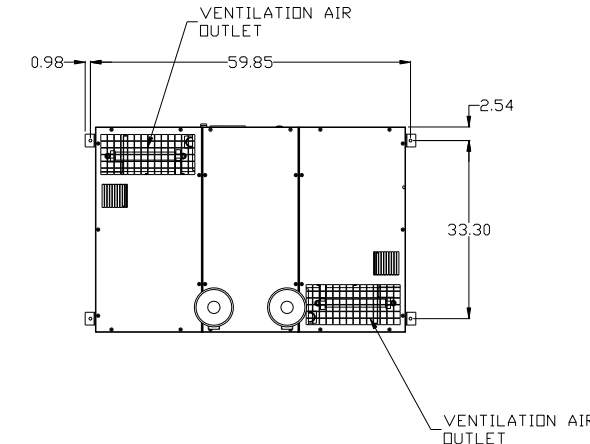
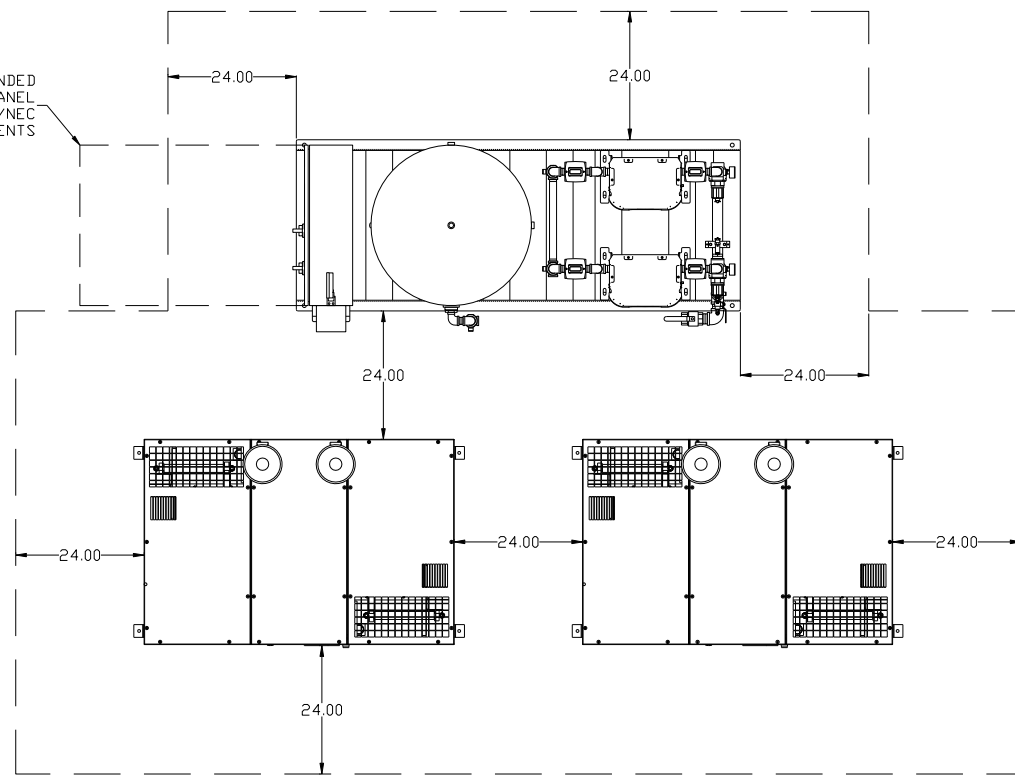


REV	ZONE	REVISION	DATE	ECN	NAME	CHKD
B-1	ALL	RELEASE TO PRODUCTION	10/1/07	21668	AEK	GES
C-1	1	REPLACED DRYER w/ CORRECT MODEL, RELOCATED HD SCROLL UNIT	1/17/08	21907	AEK	GES
C-2	ALL	UPDATED BUILD & FLOW TO CURRENT STANDARD	6/2/08	21907	AEK	GES
C-3	ALL	CORRECTED INLET DETAILS	9/25/08	21907	AEK	GES
D-1	2	UPDATED FLOW TO CURRENT PRODUCTION	6/21/10	22348	AEK	GES
D-2	1	CHANGED ATC SKID CONFIG FOR BETTER SERVICEABILITY	6/24/10	22348	AEK	GES
E-1	ALL	UPDATED TO POWEREX SED ENCLOSURE	5/31/11	22394	AEK	GES
F-1	1	ADDED FILTER CALL-OUTS TO DRYER CALL-OUT	8/19/11	22546	AEK	GES
G-1	1	UPDATED TO NANO DRYERS	8/18/17	PXEC0174	AEK	GES

MINIMUM RECOMMENDED ELECTRICAL PANEL CLEARANCE PER OSHA/NEC REQUIREMENTS

MINIMUM RECOMMENDED MAINTENANCE CLEARANCE



DRYER FRAME: AM107000AV

FRONT VIEW (TANK/DRYER SKID)

RIGHT VIEW (TANK/DRYER SKID)

FRONT VIEW (SCROLL ENCLOSURE)

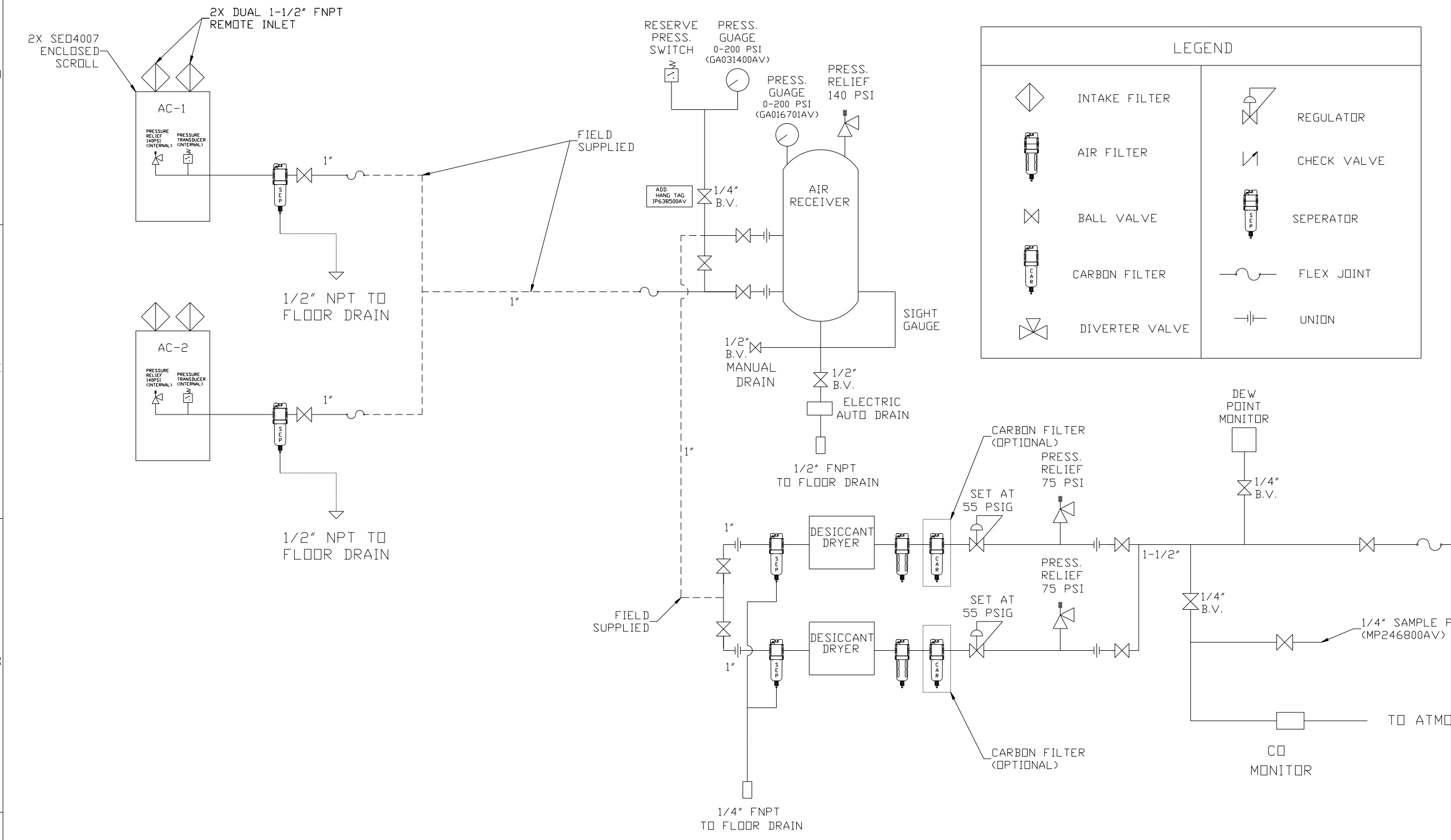
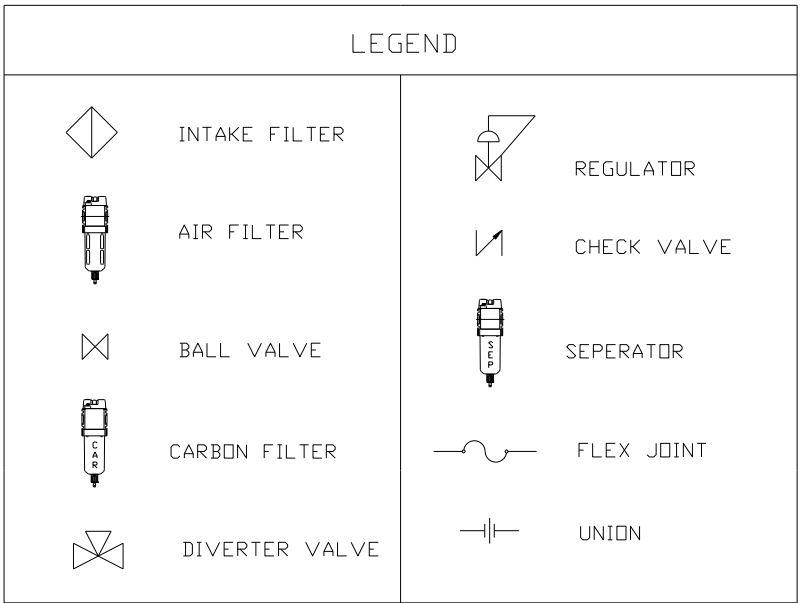
RIGHT VIEW (SCROLL ENCLOSURE)

REAR VIEW (SCROLL ENCLOSURE)

- NOTES:
 1.) SHEET 1, UNIT LAYOUT.
 2.) SHEET 2, UNIT FLOW SCHEMATIC.
 3.) INLET CONNECTIONS: 1-1/2" FNPT X 4.
 4.) OUTLET CONNECTION: 1-1/2" FNPT X 1.
 5.) POWER CONNECTION: 1- 208, 230, OR 460 VOLT
 6.) WHEN PACKAGE IS INSTALLED INTO THE FACILITY, MAKE SURE THAT THE INSTALLER REFERENCES TABLE 110.26 (A) (1) FOR MINIMUM WORKING AREA.

SYMBOL LEGEND		= ADDITIONAL CONTROL REQ'D		Drawings to conform to the current revision of the following ANSI standards:	
⊖	= MINUS DRAFT	⊕	= PLUS DRAFT	⊖	= BRINELL HARDNESS
TOLERANCES NOT SPECIFIED		AUTOCAD REL2008 LT		DO NOT SCALE DRAWING FOR DIMENSIONS	
.XX ±		INCH		Sheet 1 of 2	SCALE 1:18
.XXX ±					
<Z(DEG) ±					
CONFIDENTIAL DISCLOSURE					
This drawing is the property of the CAMPBELL GROUP of the SCOTT FETZER COMPANY and subject to return on demand. Its contents are confidential and must not be copied or submitted to outside parties for use or examination.					
DRAWN BY		CHECKED BY		APPROVED BY	
AEK		GES		DMS DB	
10/1/07		10/1/07		10/1/07 10/1/07	
MATERIAL N/A					
PART NAME					
MEDICAL SCROLL 40HP DUPLEX					
DWG NO				SIZE	
MSED400				D	

REV	ZONE	REVISION	DATE	ECN	NAME	CHKD
B-1	ALL	RELEASE TO PRODUCTION	10/1/07	21668	AEK	GES
C-1	1	REPLACED DRYER w/ CORRECT MODEL, RELOCATED 1/3 SCROLL UNIT	1/17/08	21907	AEK	GES
C-2	ALL	UPDATED BUILD & FLOW TO CURRENT STANDARD	6/2/08	21907	AEK	GES
C-3	ALL	CORRECTED INLET DETAILS	9/25/08	21907	AEK	GES
D-1	2	UPDATED FLOW TO CURRENT PRODUCTION	6/21/10	22348	AEK	GES
D-2	1	CHANGED ATC SKID CONFIG FOR BETTER SERVICEABILITY	6/24/10	22348	AEK	GES
E-1	ALL	UPDATED TO POWEREX SED ENCLOSURE	5/31/11	22394	AEK	GES
F-1	1	ADDED FILTER CALL-OUTS TO DRYER CALL-OUT	8/19/11	22546	AEK	GES
G-1	1	UPDATED TO NANO DRYERS	8/18/17	PXEC0174	AEK	GES



- NOTES:
- 1.) SHEET 1, UNIT LAYOUT.
 - 2.) SHEET 2, UNIT FLOW SCHEMATIC.
 - 3.) INLET CONNECTIONS: 1-1/2" FNPT X 4.
 - 4.) OUTLET CONNECTION: 1-1/2" FNPT X 1.
 - 5.) POWER CONNECTION: 1- 208, 230, OR 460 VOLT

SYMBOL LEGEND		= ADDITIONAL CONTROL REQ'D		Drawings to conform to the current revision of the following ANSI standards:	
⊖	MINUS DRAFT	⊕	PLUS DRAFT	⊖	ANSI Y14.3 Multi and sectional view dgs.
⊕	MINUS DRAFT	⊖	PLUS DRAFT	⊖	ANSI Y14.5M Dimensioning and tolerancing
⊕	MINUS DRAFT	⊖	PLUS DRAFT	⊖	ANSI Y14.7 Hardness
⊕	MINUS DRAFT	⊖	PLUS DRAFT	⊖	ANSI Y14.9 Surface texture
⊕	MINUS DRAFT	⊖	PLUS DRAFT	⊖	ANSI Y14.13 Welding
⊕	MINUS DRAFT	⊖	PLUS DRAFT	⊖	ANSI Y14.24 Fasteners
⊕	MINUS DRAFT	⊖	PLUS DRAFT	⊖	ANSI Y14.25 Threaded fasteners
⊕	MINUS DRAFT	⊖	PLUS DRAFT	⊖	ANSI Y14.26 Threaded fasteners
⊕	MINUS DRAFT	⊖	PLUS DRAFT	⊖	ANSI Y14.27 Threaded fasteners
⊕	MINUS DRAFT	⊖	PLUS DRAFT	⊖	ANSI Y14.28 Threaded fasteners
⊕	MINUS DRAFT	⊖	PLUS DRAFT	⊖	ANSI Y14.29 Threaded fasteners
⊕	MINUS DRAFT	⊖	PLUS DRAFT	⊖	ANSI Y14.30 Threaded fasteners
⊕	MINUS DRAFT	⊖	PLUS DRAFT	⊖	ANSI Y14.31 Threaded fasteners
⊕	MINUS DRAFT	⊖	PLUS DRAFT	⊖	ANSI Y14.32 Threaded fasteners
⊕	MINUS DRAFT	⊖	PLUS DRAFT	⊖	ANSI Y14.33 Threaded fasteners
⊕	MINUS DRAFT	⊖	PLUS DRAFT	⊖	ANSI Y14.34 Threaded fasteners
⊕	MINUS DRAFT	⊖	PLUS DRAFT	⊖	ANSI Y14.35 Threaded fasteners
⊕	MINUS DRAFT	⊖	PLUS DRAFT	⊖	ANSI Y14.36 Threaded fasteners
⊕	MINUS DRAFT	⊖	PLUS DRAFT	⊖	ANSI Y14.37 Threaded fasteners
⊕	MINUS DRAFT	⊖	PLUS DRAFT	⊖	ANSI Y14.38 Threaded fasteners
⊕	MINUS DRAFT	⊖	PLUS DRAFT	⊖	ANSI Y14.39 Threaded fasteners
⊕	MINUS DRAFT	⊖	PLUS DRAFT	⊖	ANSI Y14.40 Threaded fasteners
⊕	MINUS DRAFT	⊖	PLUS DRAFT	⊖	ANSI Y14.41 Threaded fasteners
⊕	MINUS DRAFT	⊖	PLUS DRAFT	⊖	ANSI Y14.42 Threaded fasteners
⊕	MINUS DRAFT	⊖	PLUS DRAFT	⊖	ANSI Y14.43 Threaded fasteners
⊕	MINUS DRAFT	⊖	PLUS DRAFT	⊖	ANSI Y14.44 Threaded fasteners
⊕	MINUS DRAFT	⊖	PLUS DRAFT	⊖	ANSI Y14.45 Threaded fasteners
⊕	MINUS DRAFT	⊖	PLUS DRAFT	⊖	ANSI Y14.46 Threaded fasteners
⊕	MINUS DRAFT	⊖	PLUS DRAFT	⊖	ANSI Y14.47 Threaded fasteners
⊕	MINUS DRAFT	⊖	PLUS DRAFT	⊖	ANSI Y14.48 Threaded fasteners
⊕	MINUS DRAFT	⊖	PLUS DRAFT	⊖	ANSI Y14.49 Threaded fasteners
⊕	MINUS DRAFT	⊖	PLUS DRAFT	⊖	ANSI Y14.50 Threaded fasteners
⊕	MINUS DRAFT	⊖	PLUS DRAFT	⊖	ANSI Y14.51 Threaded fasteners
⊕	MINUS DRAFT	⊖	PLUS DRAFT	⊖	ANSI Y14.52 Threaded fasteners
⊕	MINUS DRAFT	⊖	PLUS DRAFT	⊖	ANSI Y14.53 Threaded fasteners
⊕	MINUS DRAFT	⊖	PLUS DRAFT	⊖	ANSI Y14.54 Threaded fasteners
⊕	MINUS DRAFT	⊖	PLUS DRAFT	⊖	ANSI Y14.55 Threaded fasteners
⊕	MINUS DRAFT	⊖	PLUS DRAFT	⊖	ANSI Y14.56 Threaded fasteners
⊕	MINUS DRAFT	⊖	PLUS DRAFT	⊖	ANSI Y14.57 Threaded fasteners
⊕	MINUS DRAFT	⊖	PLUS DRAFT	⊖	ANSI Y14.58 Threaded fasteners
⊕	MINUS DRAFT	⊖	PLUS DRAFT	⊖	ANSI Y14.59 Threaded fasteners
⊕	MINUS DRAFT	⊖	PLUS DRAFT	⊖	ANSI Y14.60 Threaded fasteners
⊕	MINUS DRAFT	⊖	PLUS DRAFT	⊖	ANSI Y14.61 Threaded fasteners
⊕	MINUS DRAFT	⊖	PLUS DRAFT	⊖	ANSI Y14.62 Threaded fasteners
⊕	MINUS DRAFT	⊖	PLUS DRAFT	⊖	ANSI Y14.63 Threaded fasteners
⊕	MINUS DRAFT	⊖	PLUS DRAFT	⊖	ANSI Y14.64 Threaded fasteners
⊕	MINUS DRAFT	⊖	PLUS DRAFT	⊖	ANSI Y14.65 Threaded fasteners
⊕	MINUS DRAFT	⊖	PLUS DRAFT	⊖	ANSI Y14.66 Threaded fasteners
⊕	MINUS DRAFT	⊖	PLUS DRAFT	⊖	ANSI Y14.67 Threaded fasteners
⊕	MINUS DRAFT	⊖	PLUS DRAFT	⊖	ANSI Y14.68 Threaded fasteners
⊕	MINUS DRAFT	⊖	PLUS DRAFT	⊖	ANSI Y14.69 Threaded fasteners
⊕	MINUS DRAFT	⊖	PLUS DRAFT	⊖	ANSI Y14.70 Threaded fasteners
⊕	MINUS DRAFT	⊖	PLUS DRAFT	⊖	ANSI Y14.71 Threaded fasteners
⊕	MINUS DRAFT	⊖	PLUS DRAFT	⊖	ANSI Y14.72 Threaded fasteners
⊕	MINUS DRAFT	⊖	PLUS DRAFT	⊖	ANSI Y14.73 Threaded fasteners
⊕	MINUS DRAFT	⊖	PLUS DRAFT	⊖	ANSI Y14.74 Threaded fasteners
⊕	MINUS DRAFT	⊖	PLUS DRAFT	⊖	ANSI Y14.75 Threaded fasteners
⊕	MINUS DRAFT	⊖	PLUS DRAFT	⊖	ANSI Y14.76 Threaded fasteners
⊕	MINUS DRAFT	⊖	PLUS DRAFT	⊖	ANSI Y14.77 Threaded fasteners
⊕	MINUS DRAFT	⊖	PLUS DRAFT	⊖	ANSI Y14.78 Threaded fasteners
⊕	MINUS DRAFT	⊖	PLUS DRAFT	⊖	ANSI Y14.79 Threaded fasteners
⊕	MINUS DRAFT	⊖	PLUS DRAFT	⊖	ANSI Y14.80 Threaded fasteners
⊕	MINUS DRAFT	⊖	PLUS DRAFT	⊖	ANSI Y14.81 Threaded fasteners
⊕	MINUS DRAFT	⊖	PLUS DRAFT	⊖	ANSI Y14.82 Threaded fasteners
⊕	MINUS DRAFT	⊖	PLUS DRAFT	⊖	ANSI Y14.83 Threaded fasteners
⊕	MINUS DRAFT	⊖	PLUS DRAFT	⊖	ANSI Y14.84 Threaded fasteners
⊕	MINUS DRAFT	⊖	PLUS DRAFT	⊖	ANSI Y14.85 Threaded fasteners
⊕	MINUS DRAFT	⊖	PLUS DRAFT	⊖	ANSI Y14.86 Threaded fasteners
⊕	MINUS DRAFT	⊖	PLUS DRAFT	⊖	ANSI Y14.87 Threaded fasteners
⊕	MINUS DRAFT	⊖	PLUS DRAFT	⊖	ANSI Y14.88 Threaded fasteners
⊕	MINUS DRAFT	⊖	PLUS DRAFT	⊖	ANSI Y14.89 Threaded fasteners
⊕	MINUS DRAFT	⊖	PLUS DRAFT	⊖	ANSI Y14.90 Threaded fasteners
⊕	MINUS DRAFT	⊖	PLUS DRAFT	⊖	ANSI Y14.91 Threaded fasteners
⊕	MINUS DRAFT	⊖	PLUS DRAFT	⊖	ANSI Y14.92 Threaded fasteners
⊕	MINUS DRAFT	⊖	PLUS DRAFT	⊖	ANSI Y14.93 Threaded fasteners
⊕	MINUS DRAFT	⊖	PLUS DRAFT	⊖	ANSI Y14.94 Threaded fasteners
⊕	MINUS DRAFT	⊖	PLUS DRAFT	⊖	ANSI Y14.95 Threaded fasteners
⊕	MINUS DRAFT	⊖	PLUS DRAFT	⊖	ANSI Y14.96 Threaded fasteners
⊕	MINUS DRAFT	⊖	PLUS DRAFT	⊖	ANSI Y14.97 Threaded fasteners
⊕	MINUS DRAFT	⊖	PLUS DRAFT	⊖	ANSI Y14.98 Threaded fasteners
⊕	MINUS DRAFT	⊖	PLUS DRAFT	⊖	ANSI Y14.99 Threaded fasteners
⊕	MINUS DRAFT	⊖	PLUS DRAFT	⊖	ANSI Y14.100 Threaded fasteners

POWEREX
 150 PRODUCTION DRIVE, HARRISON, OHIO 45030
 Ph 888-769-7979 FAX (513) 367-3125

DWG NO: MSED400 SIZE: D