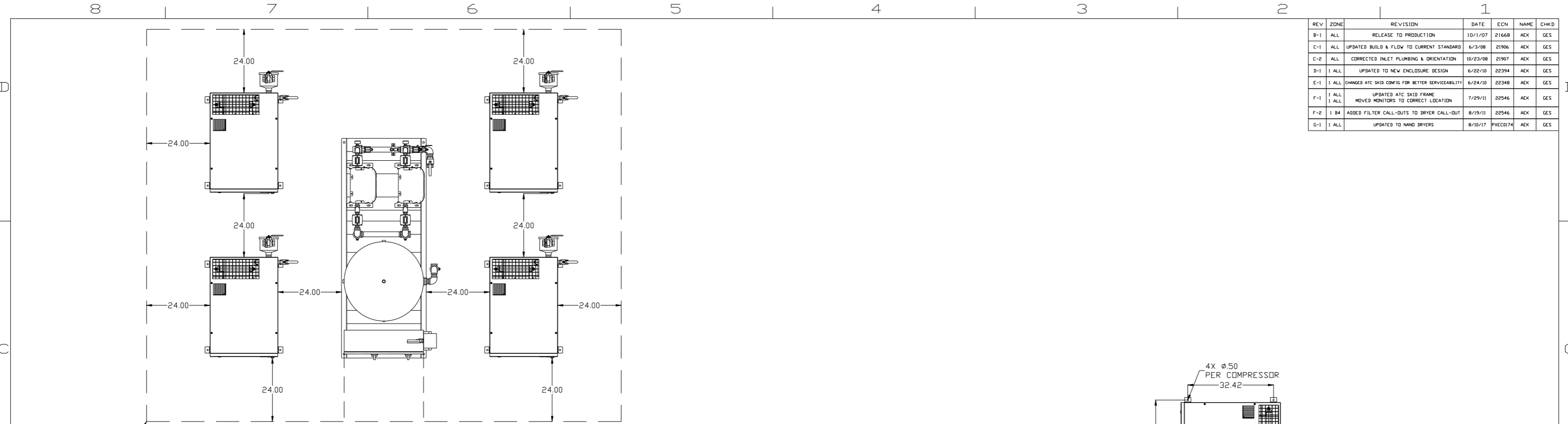
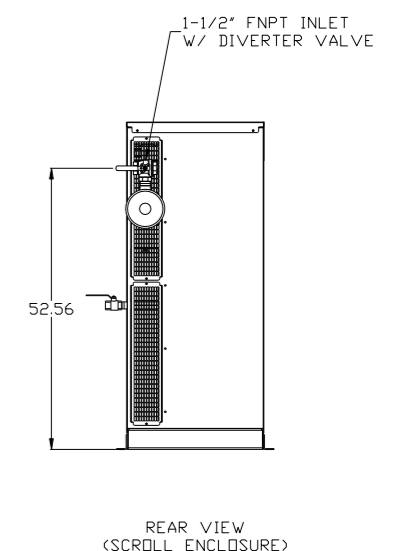
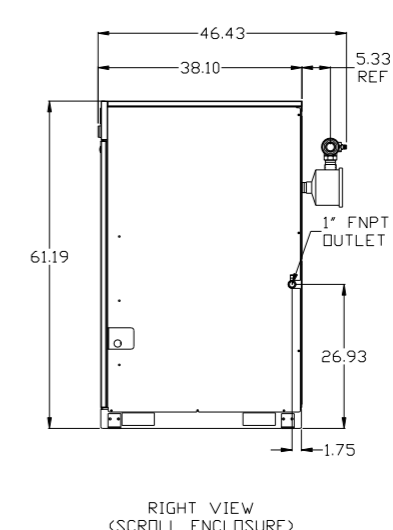
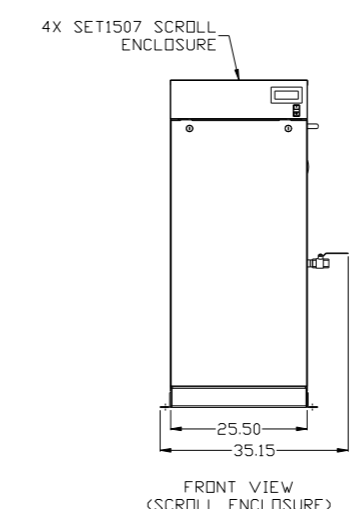
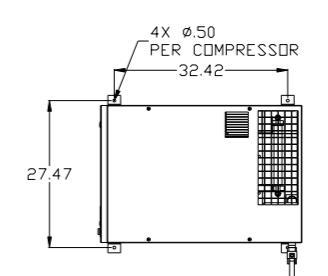
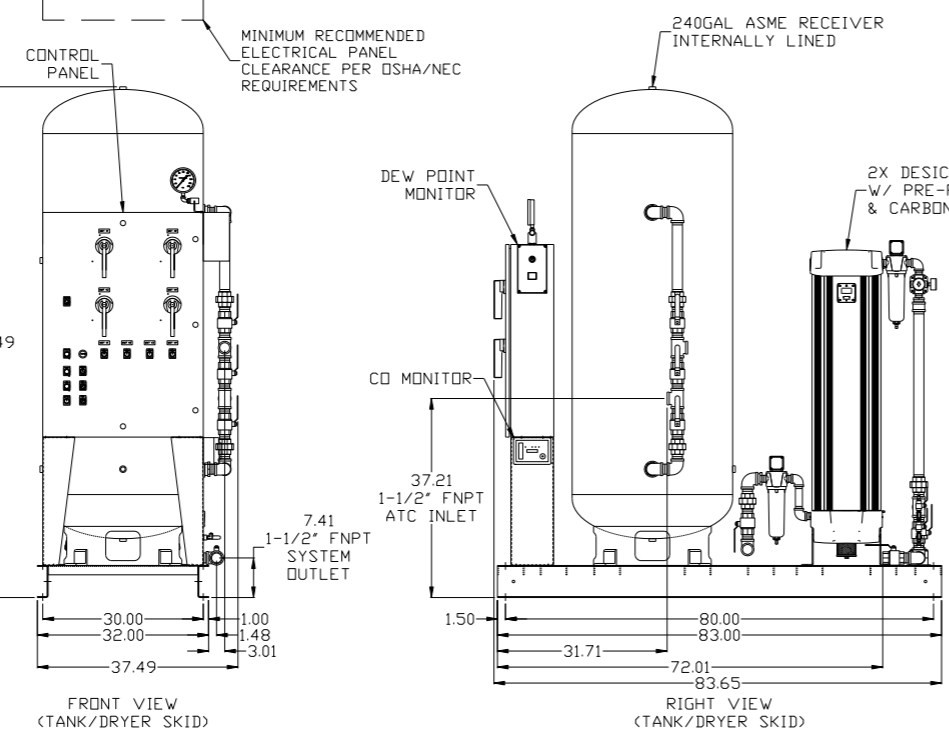


REV	ZONE	REVISION	DATE	ECN	NAME	CHKD
B-1	ALL	RELEASE TO PRODUCTION	10/1/07	21668	AEK	GES
C-1	ALL	UPDATED BUILD & FLOW TO CURRENT STANDARD	6/3/08	21906	AEK	GES
C-2	ALL	CORRECTED INLET PLUMBING & ORIENTATION	10/23/08	21907	AEK	GES
D-1	1 ALL	UPDATED TO NEW ENCLOSURE DESIGN	6/22/10	22394	AEK	GES
E-1	1 ALL	CHANGED ATC SKID CONFIG FOR BETTER SERVICEABILITY	6/24/10	22348	AEK	GES
F-1	1 ALL	UPDATED ATC SKID FRAME	7/29/11	22546	AEK	GES
F-1	1 ALL	MOVED MONITORS TO CORRECT LOCATION	7/29/11	22546	AEK	GES
F-2	1 B4	ADDED FILTER CALL-OUTS TO DRYER CALL-OUT	8/19/11	22546	AEK	GES
G-1	1 ALL	UPDATED TO HANG DRYERS	8/10/17	PXEC0174	AEK	GES



MINIMUM RECOMMENDED MAINTENANCE CLEARANCE

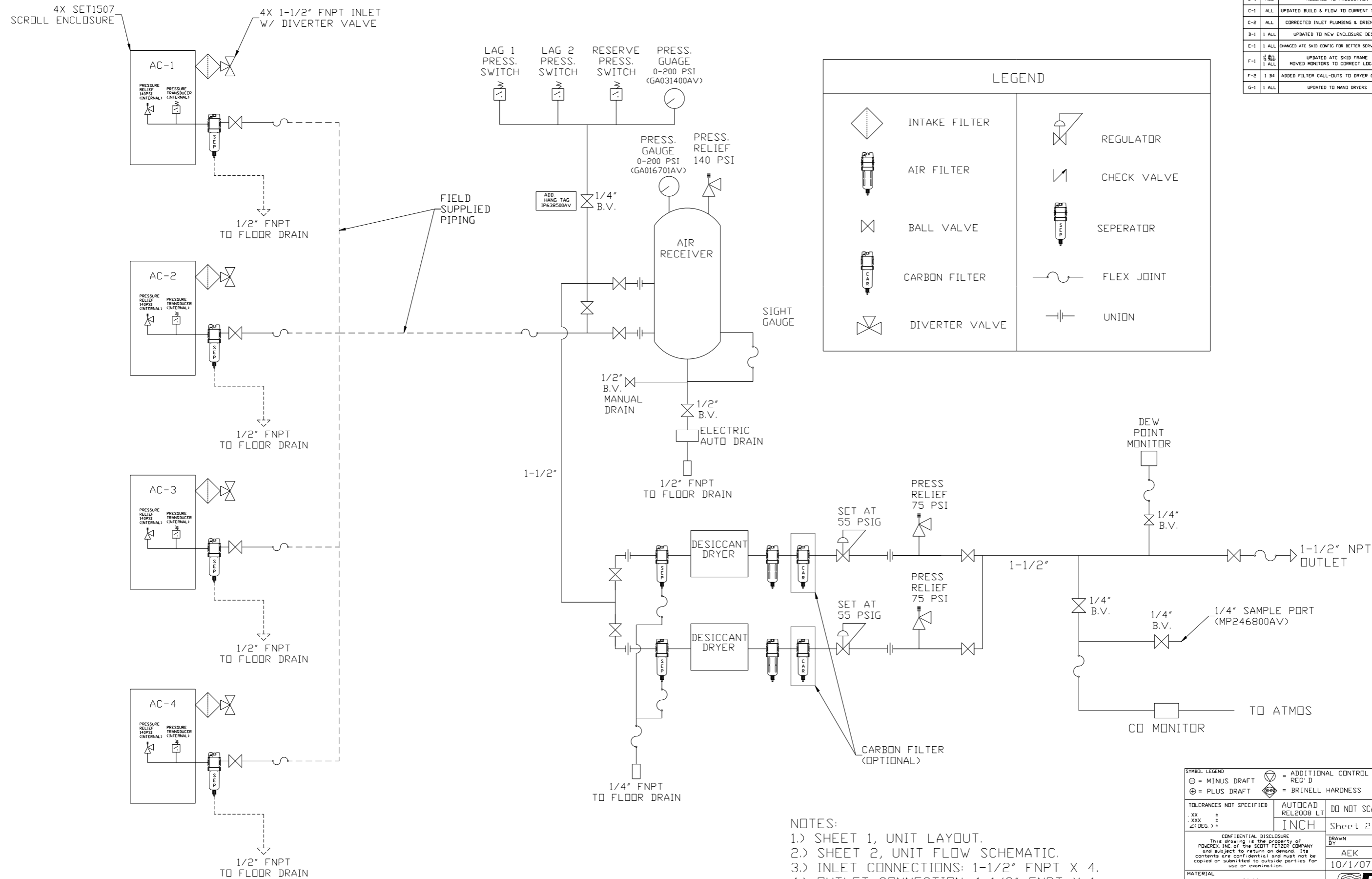


- NOTES:
- 1.) SHEET 1, UNIT LAYOUT.
 - 2.) SHEET 2, UNIT FLOW SCHEMATIC.
 - 3.) INLET CONNECTIONS: 1-1/2" FNPT X 4.
 - 4.) OUTLET CONNECTION: 1-1/2" FNPT X 1.
 - 5.) POWER CONNECTION: 1- 208, 230, OR 460 VOLT.
 - 6.) WHEN PACKAGE IS INSTALLED INTO THE FACILITY, MAKE SURE THAT THE INSTALLER REFERENCES NEC TABLE 110.26 (A) (1) FOR MINIMUM WORKING AREA.

SYMBOL LEGEND		AUTOCAD REL2008 LT		DO NOT SCALE DRAWING FOR DIMENSIONS	
⊖	MINUS DRAFT	INCH	SCALE	Sheet 1 of 2	
⊕	PLUS DRAFT	1:18			
⊕	BRINELL HARDNESS	DRAWN BY: AEK, CHECKED BY: GES, APPROVED BY: DMS, DB			
CONFIDENTIAL DISCLOSURE		MATERIAL: N/A		DATE: 10/1/07, 10/1/07, 10/1/07, 10/1/07	
PART NAME: MEDICAL SCROLL 15HP QUADPLEX		DWG NO: MSEQ150		SIZE: D	



REV	ZONE	REVISION	DATE	ECN	NAME	CHKD
B-1	ALL	RELEASE TO PRODUCTION	10/1/07	21668	AEK	GES
C-1	ALL	UPDATED BUILD & FLOW TO CURRENT STANDARD	6/3/08	21906	AEK	GES
C-2	ALL	CORRECTED INLET PLUMBING & ORIENTATION	10/23/08	21907	AEK	GES
D-1	1 ALL	UPDATED TO NEW ENCLOSURE DESIGN	6/22/10	22394	AEK	GES
E-1	1 ALL	CHANGED ATC SKID CONFIG FOR BETTER SERVICEABILITY	6/24/10	22348	AEK	GES
F-1	1 ALL	UPDATED ATC SKID FRAME	7/29/11	22546	AEK	GES
F-1	1 ALL	MOVED MONITORS TO CORRECT LOCATION	7/29/11	22546	AEK	GES
F-2	1 B4	ADDED FILTER CALL-OUTS TO DRYER CALL-OUT	8/19/11	22546	AEK	GES
G-1	1 ALL	UPDATED TO NANG DRYERS	8/10/17	PXEC0174	AEK	GES



LEGEND

	INTAKE FILTER		REGULATOR
	AIR FILTER		CHECK VALVE
	BALL VALVE		SEPERATOR
	CARBON FILTER		FLEX JOINT
	DIVERTER VALVE		UNION

- NOTES:
- 1.) SHEET 1, UNIT LAYOUT.
 - 2.) SHEET 2, UNIT FLOW SCHEMATIC.
 - 3.) INLET CONNECTIONS: 1-1/2" FNPT X 4.
 - 4.) OUTLET CONNECTION: 1-1/2" FNPT X 1.
 - 5.) POWER CONNECTION: 1- 208, 230, OR 460 VOLT.

SYMBOL LEGEND ⊖ = MINUS DRAFT ⊕ = PLUS DRAFT		= ADDITIONAL CONTROL REQ'D = BRINELL HARDNESS		Drawings to conform to the current revision of the following ANSI standards: Y14.3 Multi and sectional view dgs. Y14.5M Dimensioning and tolerancing	
TOLERANCES NOT SPECIFIED .XX ± .XXX ± << DEG > ±		AUTOCAD REL2008 LT INCH		DO NOT SCALE DRAWING FOR DIMENSIONS Sheet 2 of 2 SCALE 1:18	
CONFIDENTIAL DISCLOSURE This drawing is the property of POWEREX, INC. or the SCOTT FEITZER COMPANY and subject to return on demand. Its contents are confidential and must not be copied or submitted to outside parties for use or examination.		DRAWN BY AEK	CHECKED BY GES	APPROVED BY ENGINEERING DMS	MFG/MKTG DB
MATERIAL N/A		DATE 10/1/07	DATE 10/1/07	DATE 10/1/07	DATE 10/1/07
PART NAME ENCLOSED SCROLL FLOW SCHEMATIC		 150 PRODUCTION DRIVE, HARRISON, OHIO 45030 Ph 888-769-7979 FAX (513) 367-3125		DWG NO MSEQ150	SIZE D