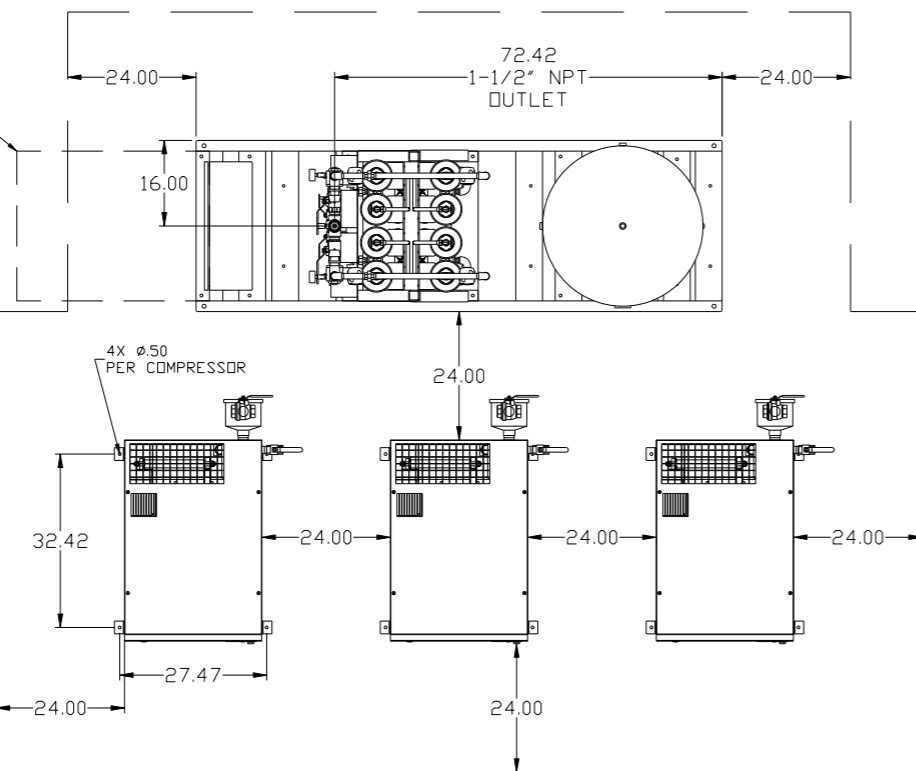
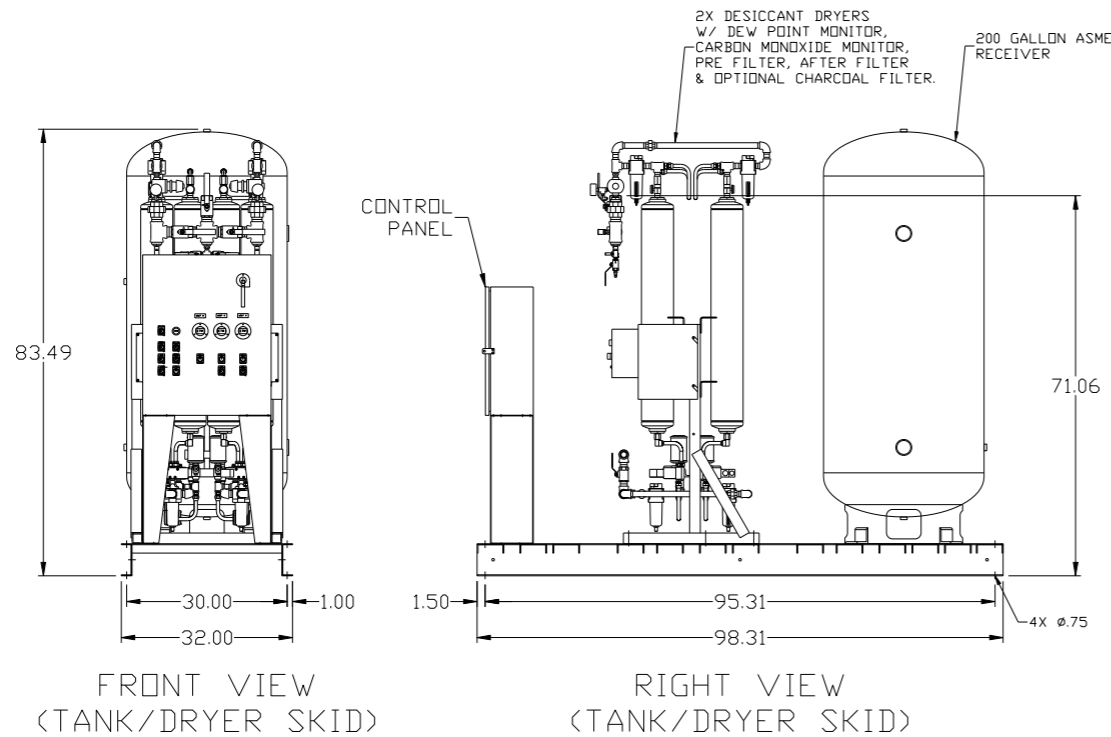


REV	ZONE	REVISION	DATE	ECN	NAME	CHKD
B-1	ALL	RELEASE TO PRODUCTION	9/28/07	21668	AEK	GES
C-1	ALL	UPDATED BUILD & FLOW TO CURRENT STANDARD	6/3/08	21907	AEK	GES
C-2	ALL	CORRECTED INLET PLUMBING & ORIENTATION	10/23/08	21907	AEK	GES
D-1	1 ALL	UPDATED TO NEW ENCLOSURE DESIGN	6/21/10	22394	AEK	GES
E-1	1 ALL	UPDATED DRYER OUTLET ORIENTATION	4/1/15	PKC0088	MJD	GES

MINIMUM RECOMMENDED ELECTRICAL PANEL CLEARANCE PER OSHA/NEC REQUIREMENTS

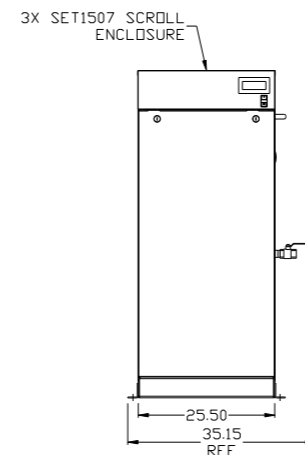


MINIMUM RECOMMENDED MAINTENANCE CLEARANCE

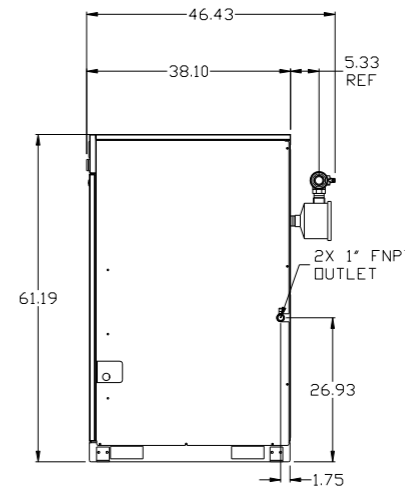


FRONT VIEW (TANK/DRYER SKID)

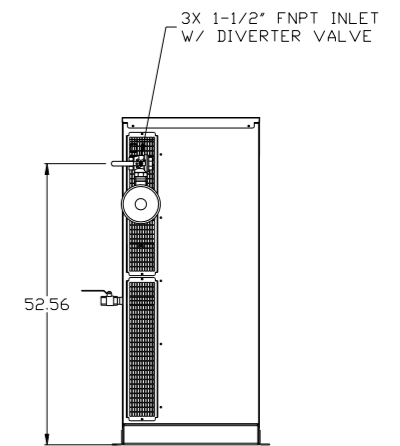
RIGHT VIEW (TANK/DRYER SKID)



FRONT VIEW (SCROLL ENCLOSURE)



RIGHT VIEW (SCROLL ENCLOSURE)



REAR VIEW (SCROLL ENCLOSURE)

- NOTES:
- 1.) SHEET 1, UNIT LAYOUT.
 - 2.) SHEET 2, UNIT FLOW SCHEMATIC.
 - 3.) INLET CONNECTIONS: 1-1/2" FNPT X 3.
 - 4.) OUTLET CONNECTION: 1-1/2" FNPT X 1.
 - 5.) POWER CONNECTION: 1- 208, 230, OR 460 VOLT
 - 6.) WHEN PACKAGE IS INSTALLED INTO THE FACILITY, MAKE SURE THAT THE INSTALLER REFERENCES TABLE 110.26 (A) (1) FOR MINIMUM WORKING AREA.

SYMBOL LEGEND		= ADDITIONAL CONTROL REQ'D		Drawings to conform to the current revision of the following ANSI standards:	
⊖	MINUS DRAFT	⊕	PLUS DRAFT	⊖	ANSI Y14.3 Multi and sectional view dgs.
⊕	PLUS DRAFT	⊖	MINUS DRAFT	⊕	ANSI Y14.5M Dimensioning and tolerancing
⊖	MINUS DRAFT	⊕	PLUS DRAFT	⊖	ANSI Y14.3 Multi and sectional view dgs.
⊕	PLUS DRAFT	⊖	MINUS DRAFT	⊕	ANSI Y14.5M Dimensioning and tolerancing
TOLERANCES NOT SPECIFIED		AUTOCAD REL2008 LT		DO NOT SCALE DRAWING FOR DIMENSIONS	
.XX ±		INCH		Sheet 1 of 2	
.XXX ±				SCALE 1:18	
<Z<DEG> ±					
CONFIDENTIAL DISCLOSURE					
This drawing is the property of POWEREX, INC. of the SCOTT FEITZER COMPANY and subject to return on demand. Its contents are confidential and must not be copied or submitted to outside parties for use or examination.					
DRAWN BY		CHECKED BY		APPROVED BY	
AEK		GES		DMS DB	
9/28/07		9/28/07		9/28/07 9/28/07	
MATERIAL N/A					
PART NAME MEDICAL SCROLL 15HP TRIPLEX					
DWG NO MSET150				SIZE D	

REV	ZONE	REVISION	DATE	ECN	NAME	CHKD
B-1	ALL	RELEASE TO PRODUCTION	9/28/07	21668	AEK	GES
C-1	ALL	UPDATED BUILD & FLOW TO CURRENT STANDARD	6/3/08	21907	AEK	GES
C-2	ALL	CORRECTED INLET PLUMBING & ORIENTATION	10/23/08	21907	AEK	GES
D-1	1 ALL	UPDATED TO NEW ENCLOSURE DESIGN	6/21/10	22394	AEK	GES
E-1	1 ALL	UPDATED DRYER OUTLET ORIENTATION	4/1/15	PKC0088	MJD	GES

3X SET1507 SCROLL ENCLOSURE

3X 1-1/2" FNPT INLET W/ DIVERTER VALVE

FIELD SUPPLIED PIPING

1/2" FNPT TO FLOOR DRAIN

1/2" FNPT TO FLOOR DRAIN

1/2" FNPT TO FLOOR DRAIN

LAG 1 PRESS. SWITCH
RESERVE PRESS. SWITCH
PRESS. GAUGE 0-200 PSI (GA031400AV)

PRESS. GAUGE 0-200 PSI (GA016701AV)
PRESS. RELIEF 140 PSI

ADD. HANG TAG IP638500AV

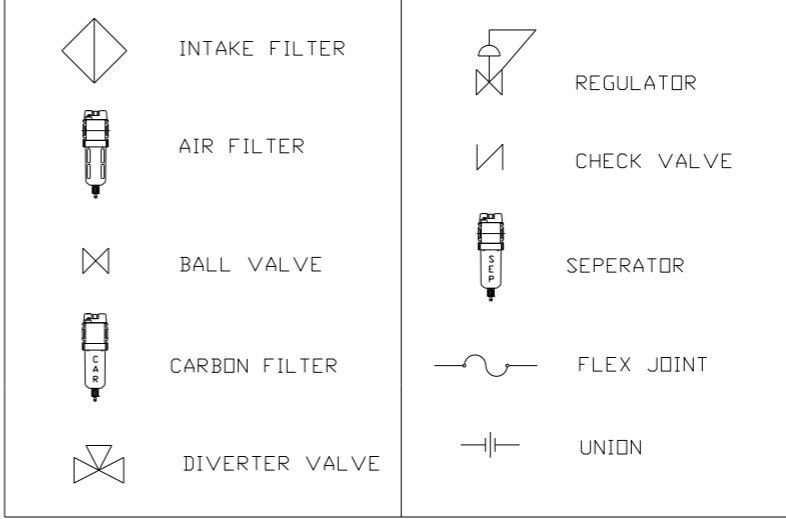
1/2" B.V. MANUAL DRAIN

ELECTRIC AUTO DRAIN

1/2" FNPT TO FLOOR DRAIN

1/4" FNPT TO FLOOR DRAIN

LEGEND



DESICCANT DRYER

DESICCANT DRYER

SET AT 55 PSIG

SET AT 55 PSIG

PRESS RELIEF 75 PSI

PRESS RELIEF 75 PSI

CARBON FILTER (OPTIONAL)

DEW POINT MONITOR

1/4" B.V.

1-1/2" NPT OUTLET

1/4" B.V.

1/4" SAMPLE PORT (MP246800AV)

CO MONITOR

- NOTES:
- 1.) SHEET 1, UNIT LAYOUT.
 - 2.) SHEET 2, UNIT FLOW SCHEMATIC.
 - 3.) INLET CONNECTIONS: 1-1/2" FNPT X 3.
 - 4.) OUTLET CONNECTION: 1-1/2" FNPT X 1.
 - 5.) POWER CONNECTION: 1- 208, 230, OR 460 VOLT

SYMBOL LEGEND		= ADDITIONAL CONTROL REQ'D		Drawings to conform to the current revision of the following ANSI standards:	
= MINUS DRAFT		= BRINELL HARDNESS		Y14.3 Multi and sectional view dgs. Y14.5M Dimensioning and tolerancing	
TOLERANCES NOT SPECIFIED		AUTOCAD REL2008 LT		DO NOT SCALE DRAWING FOR DIMENSIONS	
.XX ±		INCH		Sheet 2 of 2	
.XXX ±				SCALE 1:18	
<<DEG> ±					
CONFIDENTIAL DISCLOSURE This drawing is the property of POWEREX, INC. of the SCOTT FETZER COMPANY and subject to return on demand. Its contents are confidential and must not be copied or submitted to outside parties for use or examination.					
DRAWN BY		CHECKED BY		APPROVED BY	
AEK		GES		DMS DB	
9/28/07		9/28/07		9/28/07 9/28/07	
MATERIAL		N/A		POWEREX	
PART NAME		ENCLOSED SCROLL		150 PRODUCTION DRIVE, HARRISON, OHIO 45030 Ph 888-769-7979 FAX (513) 367-3125	
FLOW SCHEMATIC		DWG NO		MSET150	
				SIZE D	