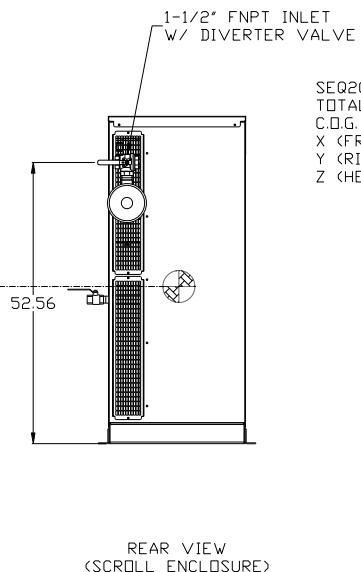
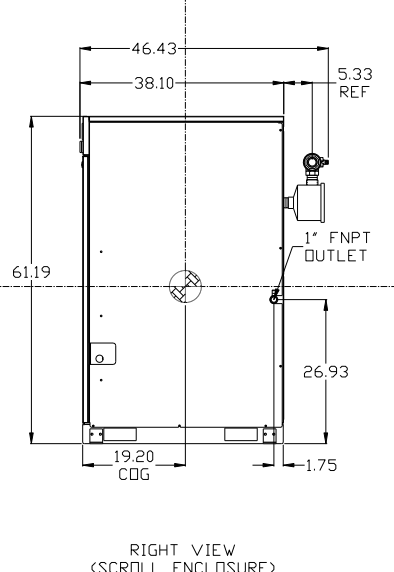
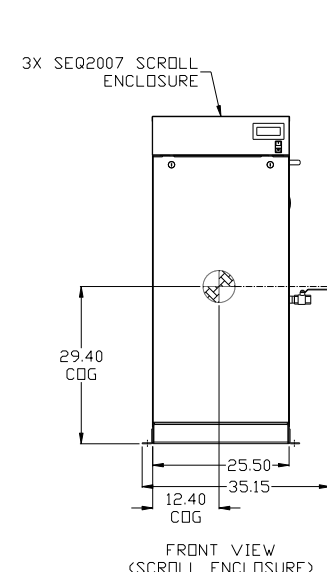
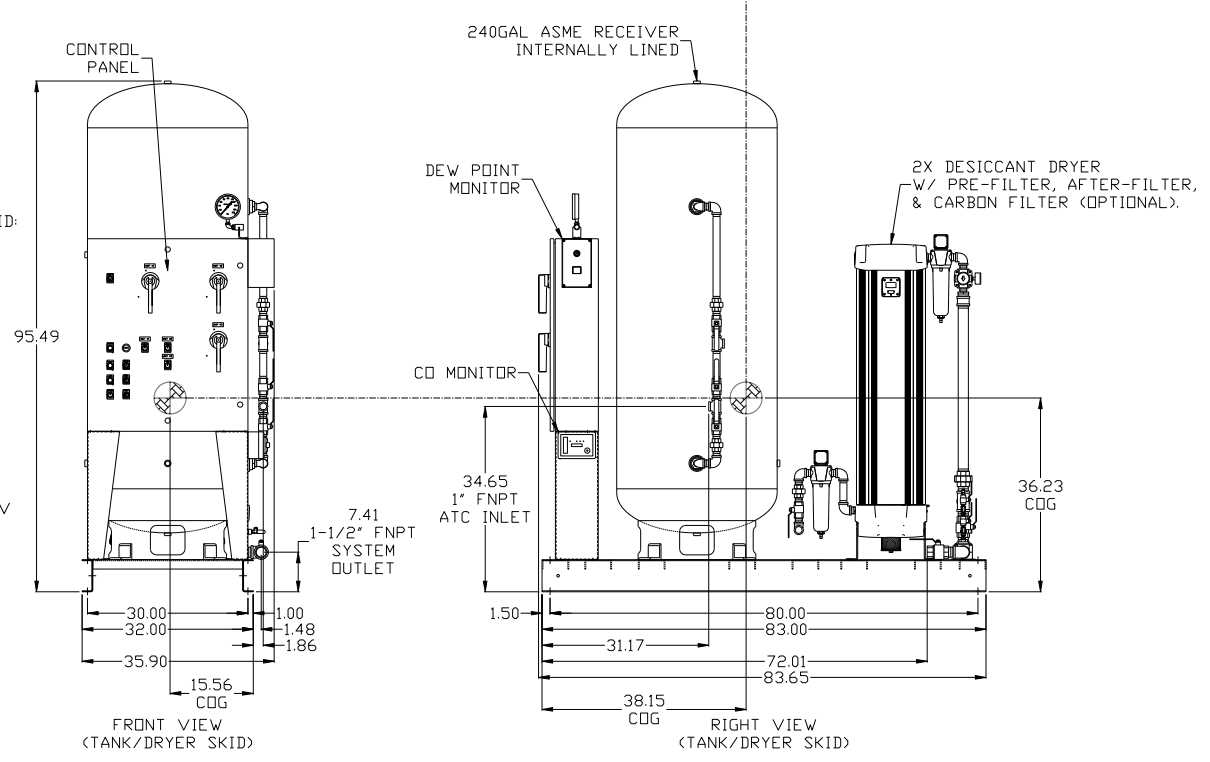
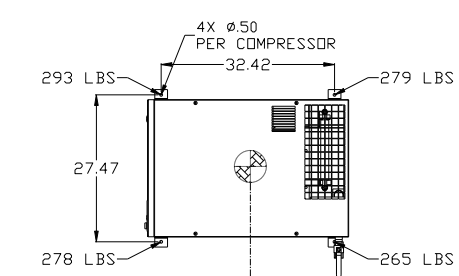
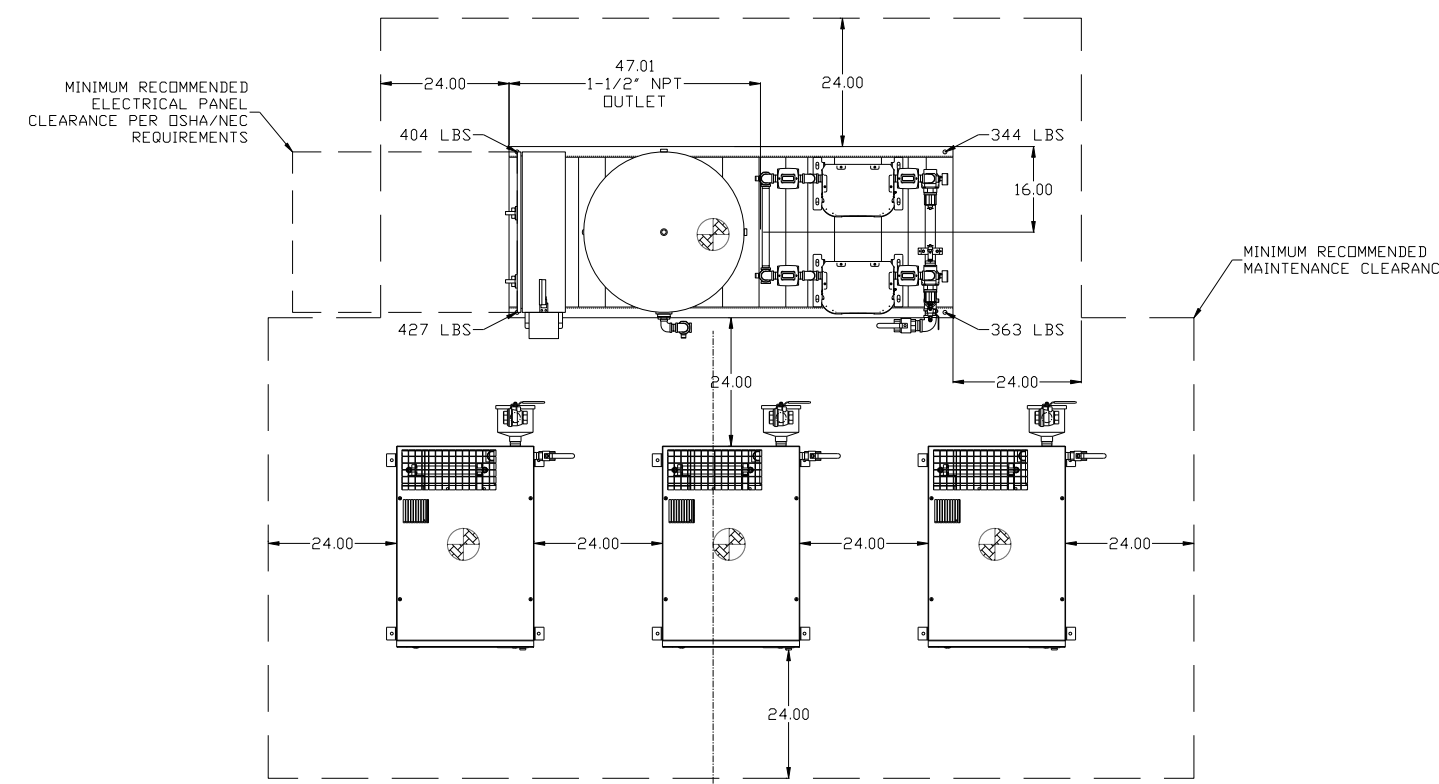


8 7 6 5 4 3 2 1

| REV | ZONE | REVISION | DATE | ECN | NAME | CHKD |
|-----|--------------------------|---|----------|----------|------|------|
| B-1 | ALL | RELEASE TO PRODUCTION | 10/1/07 | 21668 | AEK | GES |
| C-1 | ALL | UPDATED BUILD & FLOW TO CURRENT STANDARD | 6/3/08 | 21907 | AEK | GES |
| C-2 | ALL | CORRECTED INLET PLUMBING & ORIENTATION | 10/23/08 | 21907 | AEK | GES |
| C-3 | ALL | ADDED SHEET 3 | 12/5/08 | 21907 | AEK | GES |
| D-1 | 1 ALL | UPDATED TO NEW ENCLOSURE DESIGN | 6/21/10 | 22394 | AEK | GES |
| E-1 | 1 ALL | CHANGED ATC SKID CONFIG FOR BETTER SERVICEABILITY | 6/24/10 | 22348 | AEK | GES |
| F-1 | 1 BS | ADDED FILTER CALL-OUTS TO DRYER CALL-OUT | 8/19/11 | 22546 | AEK | GES |
| G-1 | 1 ALL 2 BS 1 BS-87 | ADDED CENTER OF GRAVITY INFO ADDED PRESSURE SWITCHES MOVED CO MONITOR TO CONTROL PANEL FEET | 6/2/14 | PXEC0067 | AEK | GES |
| H-1 | 1 ALL | UPDATED TO HAND DRYERS | 8/10/17 | PXEC0174 | AEK | GES |



AIR TREATMENT CENTER SKID:
TOTAL WEIGHT: 1538 LBS
C.O.G. DIMENSIONS
X (FRONT): -15.56"
Y (RIGHT): 38.15"
Z (HEIGHT): 36.23"

DRYER FRAME: AM107000AV

SEQ2007 SCROLL ENCLOSURE:
TOTAL WEIGHT: 1115 LBS
C.O.G. DIMENSIONS
X (FRONT): 12.40"
Y (RIGHT): 19.20"
Z (HEIGHT): 29.4"

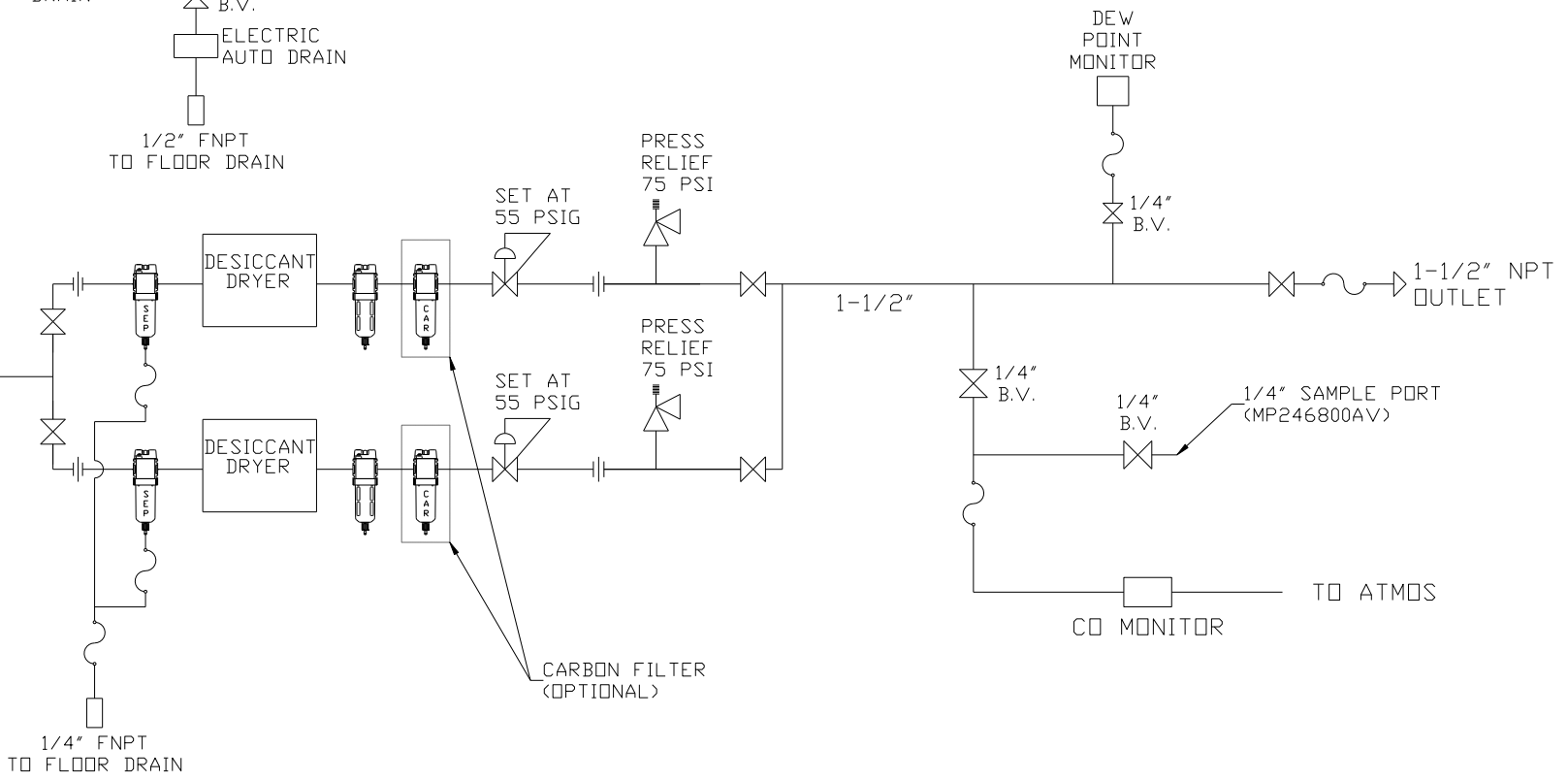
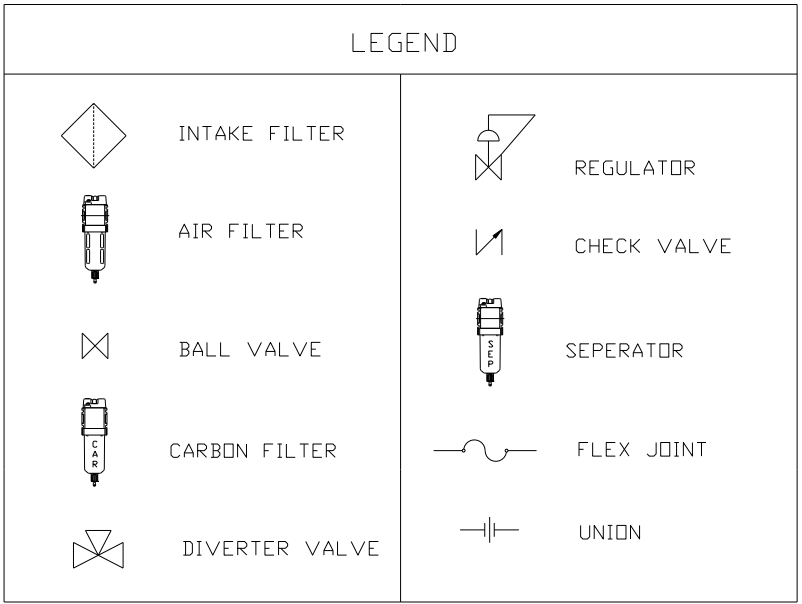
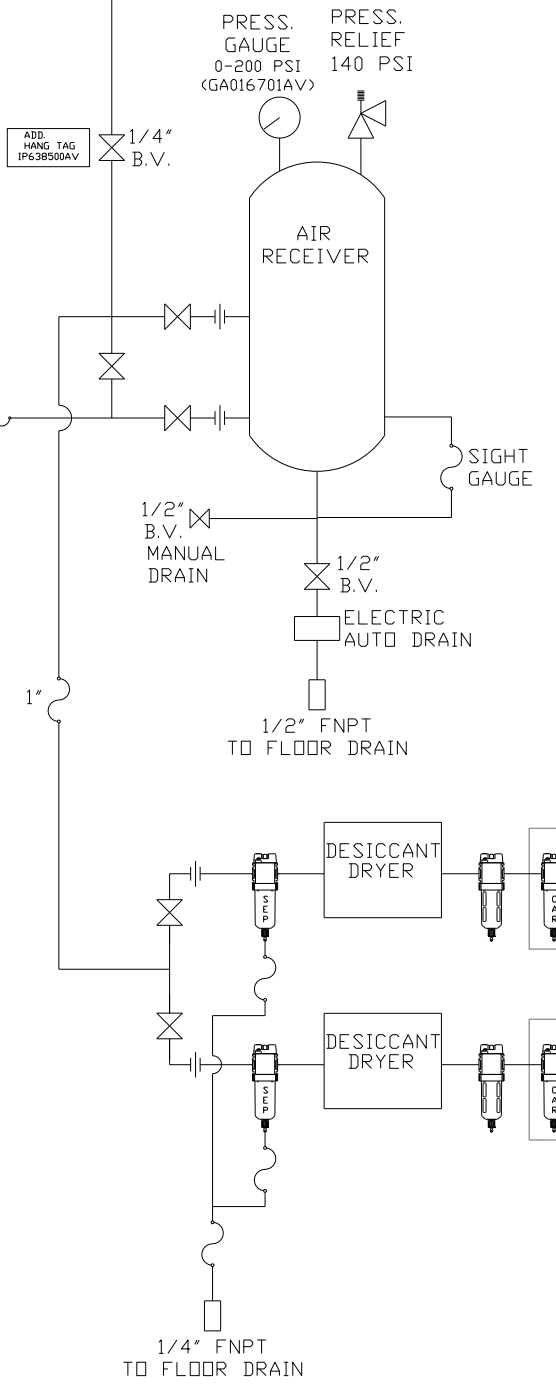
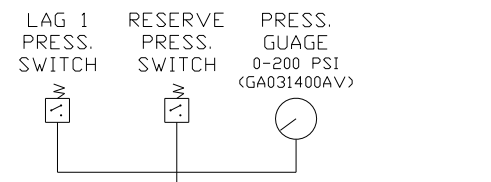
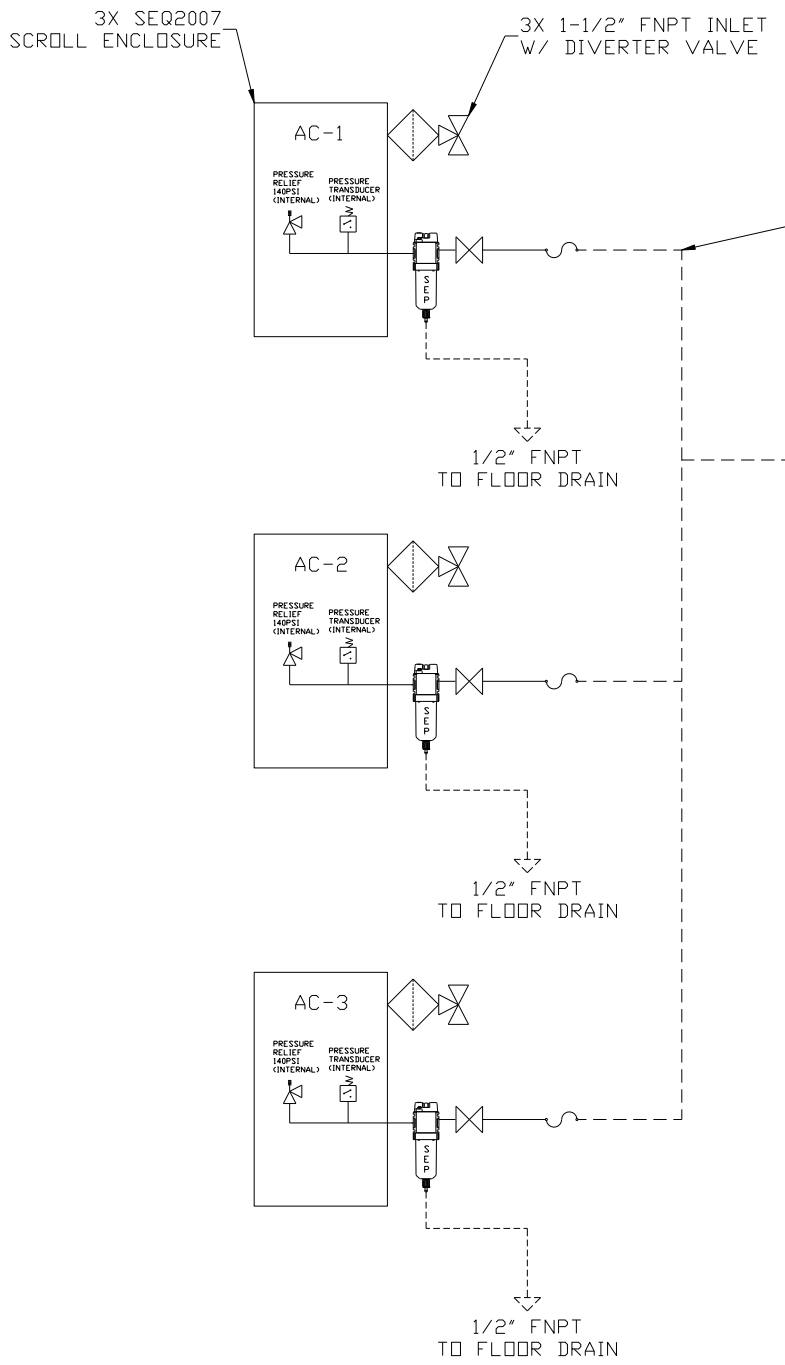
DENDITES CENTER OF GRAVITY

NOTES:
1.) SHEET 1, UNIT LAYOUT.
2.) SHEET 2, UNIT FLOW SCHEMATIC.
3.) INLET CONNECTIONS: 1-1/2" FNPT X 3.
4.) OUTLET CONNECTION: 1-1/2" FNPT X 1.
5.) POWER CONNECTION: 1- 208, 230, OR 460 VOLT
6.) WHEN PACKAGE IS INSTALLED INTO THE FACILITY, MAKE SURE THAT THE INSTALLER REFERENCES TABLE 110.26 (A) (1) FOR MINIMUM WORKING AREA.

| | | | | | |
|--|--|----------------------------|--|--|--|
| SYMBOL LEGEND | | = ADDITIONAL CONTROL REQ'D | | Drawings to conform to the current revision of the following ANSI standards: | |
| = MINUS DRAFT | | = BRINELL HARDNESS | | Y14.3 Multi and sectional view dgs. Y14.5M Dimensioning and tolerancing | |
| = PLUS DRAFT | | | | | |
| TOLERANCES NOT SPECIFIED | | AUTOCAD REL2008 LT | | DO NOT SCALE DRAWING FOR DIMENSIONS | |
| .XX ± | | INCH | | Sheet 1 of 3 | |
| .XXX ± | | | | SCALE 1:18 | |
| ∠(DEG) ± | | | | | |
| CONFIDENTIAL DISCLOSURE This drawing is the property of POWEREX, INC. of the SCOTT FETZER COMPANY and subject to return on demand. Its contents are confidential and must not be copied or submitted to outside parties for use or examination. | | | | | |
| DRAWN BY | | CHECKED BY | | APPROVED BY | |
| AEK | | GES | | DMS DB | |
| 10/1/07 | | 10/1/07 | | 10/1/07 10/1/07 | |
| MATERIAL N/A | | | | | |
| PART NAME | | | | | |
| MEDICAL SCROLL 20HP TRIPLEX | | | | | |
| DVG NO MSET200 | | | | | |
| SIZE D | | | | | |

8 7 6 5 4 3 2 1

| REV | ZONE | REVISION | DATE | ECN | NAME | CHKD |
|-----|--------------------------|---|----------|----------|------|------|
| B-1 | ALL | RELEASE TO PRODUCTION | 10/1/07 | 21668 | AEK | GES |
| C-1 | ALL | UPDATED BUILD & FLOW TO CURRENT STANDARD | 6/3/08 | 21907 | AEK | GES |
| C-2 | ALL | CORRECTED INLET PLUMBING & ORIENTATION | 10/23/08 | 21907 | AEK | GES |
| C-3 | ALL | ADDED SHEET 3 | 12/5/08 | 21907 | AEK | GES |
| D-1 | 1 ALL | UPDATED TO NEW ENCLOSURE DESIGN | 6/21/10 | 22394 | AEK | GES |
| E-1 | 1 ALL | CHANGED ATC SKID CONFIG FOR BETTER SERVICEABILITY | 6/24/10 | 22348 | AEK | GES |
| F-1 | 1 BS | ADDED FILTER CALL-OUTS TO DRYER CALL-OUT | 8/19/11 | 22546 | AEK | GES |
| G-1 | 1 ALL 2 BS 1 BS-87 | ADDED CENTER OF GRAVITY INFO ADDED PRESSURE SWITCHES MOVED CO MONITOR TO CONTROL PANEL FEET | 6/2/14 | PXEC0067 | AEK | GES |
| H-1 | 1 ALL | UPDATED TO HAND DRYERS | 8/10/17 | PXEC0174 | AEK | GES |

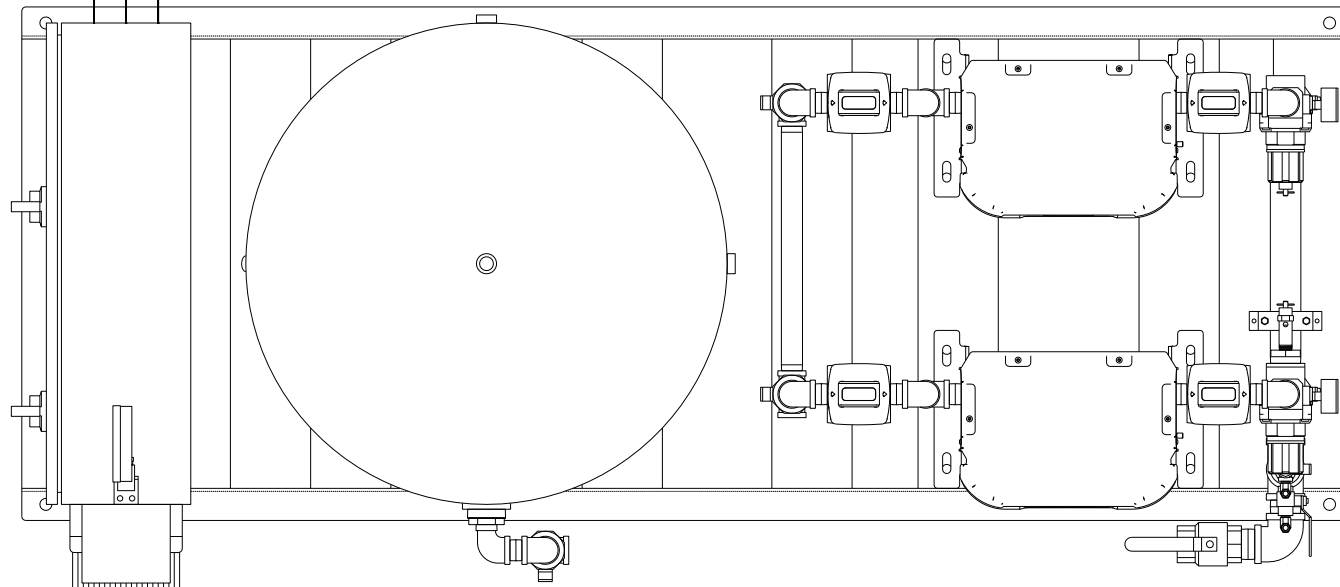


- NOTES:
 1.) SHEET 1, UNIT LAYOUT.
 2.) SHEET 2, UNIT FLOW SCHEMATIC.
 3.) INLET CONNECTIONS: 1-1/2" FNPT X 3.
 4.) OUTLET CONNECTION: 1-1/2" FNPT X 1.
 5.) POWER CONNECTION: 1- 208, 230, OR 460 VOLT

| | | | | |
|--|--------------------|--|-------------------|--|
| SYMBOL LEGEND | | = ADDITIONAL CONTROL REQ'D = BRINELL HARDNESS | | Drawings to conform to the current revision of the following ANSI standards: Y14.3 Multi and sectional view dgs. Y14.5M Dimensioning and tolerancing |
| TOLERANCES NOT SPECIFIED | AUTOCAD REL2008 LT | DO NOT SCALE DRAWING FOR DIMENSIONS | | SCALE 1:18 |
| .XX ± .XXX ± ∠(DEG) ± | INCH | Sheet 2 of 3 | | |
| CONFIDENTIAL DISCLOSURE This drawing is the property of POWEREX, INC. of the SCOTT FETZER COMPANY and subject to return on demand. Its contents are confidential and must not be copied or submitted to outside parties for use or examination. | | DRAWN BY AEK | CHECKED BY GES | APPROVED BY ENGINEERING MFG/MKTG DMS DB |
| MATERIAL N/A | | 10/1/07 | 10/1/07 | 10/1/07 |
| PART NAME ENCLOSED SCROLL FLOW SCHEMATIC | | 150 PRODUCTION DRIVE, HARRISON, OHIO 45030 Ph 888-769-7979 FAX (513) 367-3125 | | SIZE D |
| | | DWG NO MSET200 | | SIZE D |

| REV | ZONE | REVISION | DATE | ECN | NAME | CHKD |
|-----|--------------------------|---|---------|----------|------|------|
| C-3 | ALL | ADDED SHEET 3 | 12/5/08 | 21907 | AEK | GES |
| D-1 | 1 ALL | UPDATED TO NEW ENCLOSURE DESIGN | 6/21/10 | 22394 | AEK | GES |
| E-1 | 1 ALL 3 ALL | CHANGED ATC SKID CONFIG FOR BETTER SERVICEABILITY | 6/24/10 | 22348 | AEK | GES |
| F-1 | 1 B5 | ADDED FILTER CALL-OUTS TO DRYER CALL-OUT | 8/19/11 | 22546 | AEK | GES |
| G-1 | 1 ALL 2 D5 1 B6-B7 | ADDED CENTER OF GRAVITY INFO ADDED PRESSURE SWITCHES MOVED CO MONITOR TO CONTROL PANEL FEET | 6/2/14 | PXEC0067 | AEK | GES |
| H-1 | 1 ALL | UPDATED TO NANO DRYERS | 8/10/17 | PXEC0174 | AEK | GES |

MAIN POWER 3Ø
3X 1/0-THHN

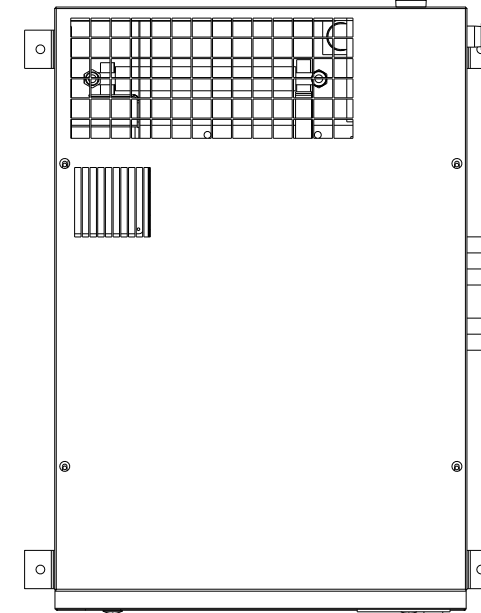
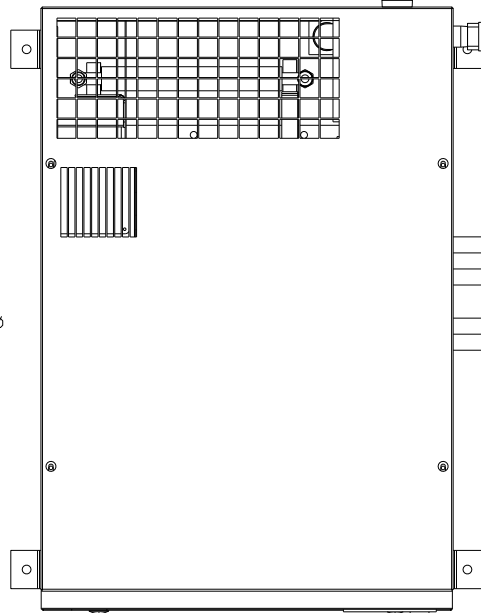
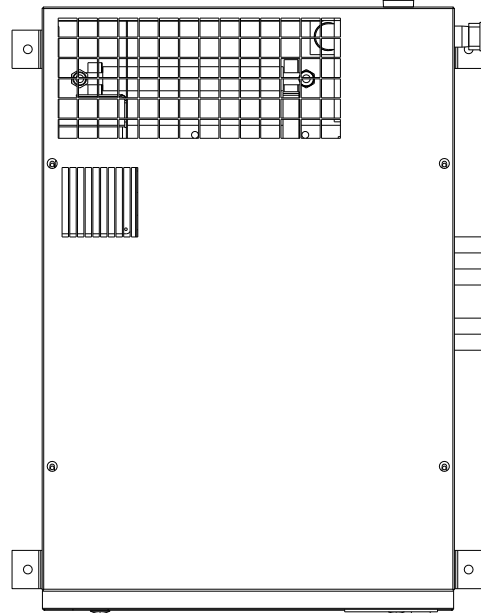


NOTE:
WIRE SIZED FOR 460V, 60Hz, 3Ø

CONTROL POWER 1Ø
4X #16-THHN

CONTROL POWER 1Ø
4X #16-THHN

CONTROL POWER 1Ø
4X #16-THHN



UNIT POWER 3Ø
3X #6-THHN

UNIT POWER 3Ø
3X #6-THHN

SYMBOL LEGEND
 ⊖ = MINUS DRAFT
 ⊕ = PLUS DRAFT
 TOLERANCES NOT SPECIFIED
 .XX ±
 .XXX ±
 \angle (DEG.) ±

⊕ = ADDITIONAL CONTROL REQ'D
 ⊕ = BELT HOLES
 AUTOCAD
 REL2008 LT

Drawings to conform to the current revision of the following ANSI standards:
 Y14.3 Multi and sectional view dsgs.
 Y14.5M Dimensioning and tolerancing

DO NOT SCALE DRAWING FOR DIMENSIONS

Sheet 3 of 3
 SCALE N/A

CONFIDENTIAL DISCLOSURE
 This drawing is the property of POWEREX, INC. of the SCOTT FELTZER COMPANY and subject to return on demand. Its contents are confidential and must not be copied or submitted to outside parties for use or examination.

| | | | | |
|----------|------------|-------------|-------------|-----------|
| DRAWN BY | CHECKED BY | APPROVED BY | ENGINEERING | MFG/MRKTG |
| AEK | GES | DMS | JJ | |
| 12/5/08 | 12/5/08 | 12/5/08 | 12/5/08 | |

MATERIAL N/A

PART NAME
 MED. SCROLL ENCL.
 FIELD WIRING

DWG NO
 MSET200

SIZE
 D

POWEREX
 150 PRODUCTION DRIVE, HARRISON, OHIO 45030
 Ph 888-769-7979 FAX (513) 367-3125

MSET200.dwg