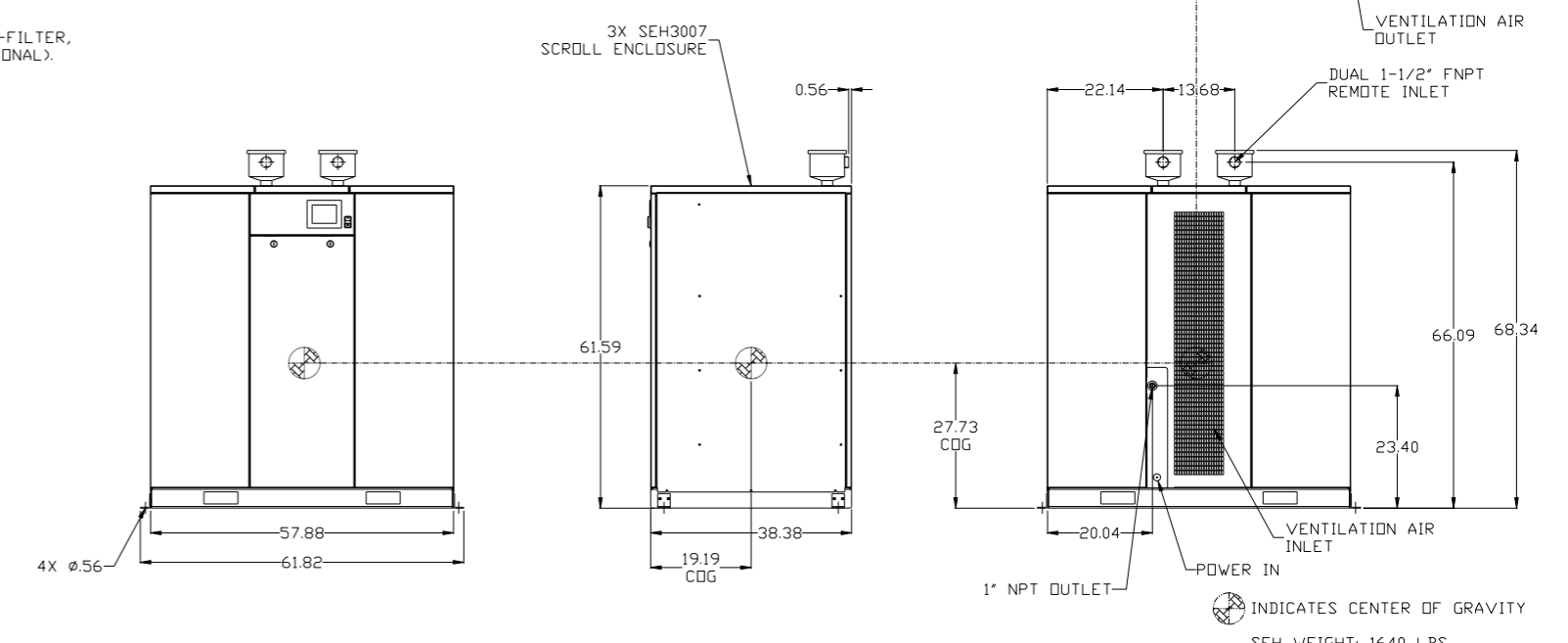
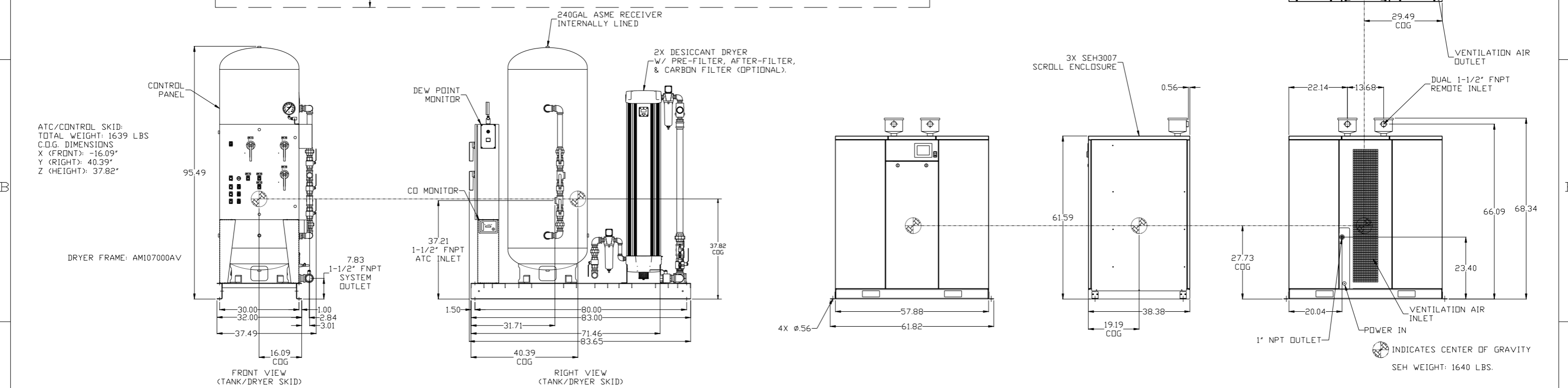
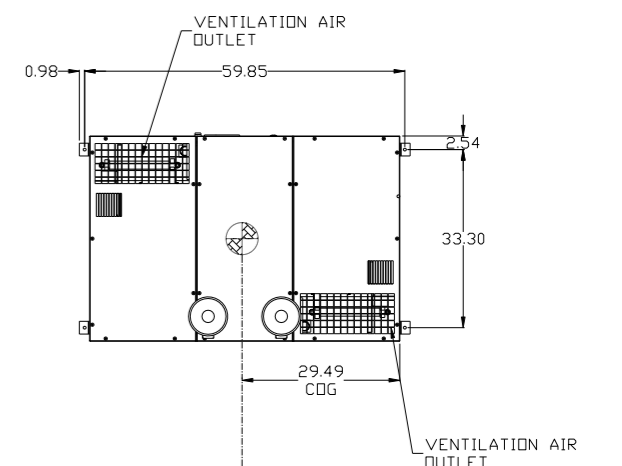
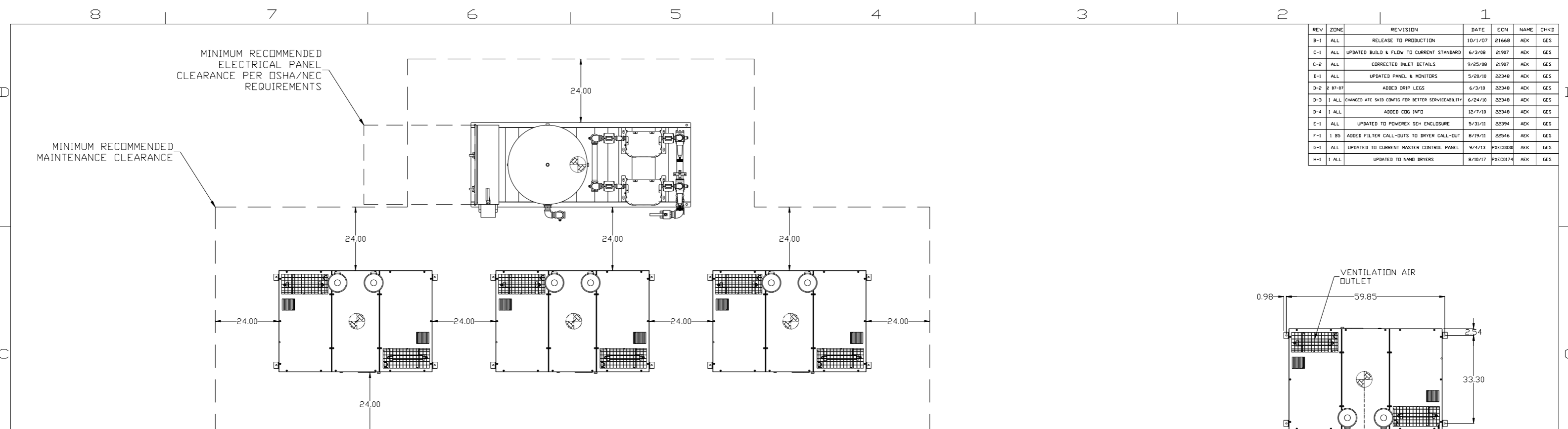


REV	ZONE	REVISION	DATE	ECN	NAME	CHKD
B-1	ALL	RELEASE TO PRODUCTION	10/1/07	21668	AEK	GES
C-1	ALL	UPDATED BUILD & FLOW TO CURRENT STANDARD	6/3/08	21907	AEK	GES
C-2	ALL	CORRECTED INLET DETAILS	9/25/08	21907	AEK	GES
D-1	ALL	UPDATED PANEL & MONITORS	5/20/10	22348	AEK	GES
D-2	2 B7-D7	ADDED DRIP LEGS	6/3/10	22348	AEK	GES
D-3	1 ALL	CHANGED ATC SKID CONFIG FOR BETTER SERVICEABILITY	6/24/10	22348	AEK	GES
D-4	1 ALL	ADDED COG INFO	12/7/10	22348	AEK	GES
E-1	ALL	UPDATED TO POWEREX SEH ENCLOSURE	5/31/11	22394	AEK	GES
F-1	1 B5	ADDED FILTER CALL-OUTS TO DRYER CALL-OUT	8/19/11	22546	AEK	GES
G-1	ALL	UPDATED TO CURRENT MASTER CONTROL PANEL	9/4/13	PXEC0030	AEK	GES
H-1	1 ALL	UPDATED TO HAND DRYERS	8/10/17	PXEC0174	AEK	GES



ATC/CONTROL SKID:  
TOTAL WEIGHT: 1639 LBS  
C.O.G. DIMENSIONS  
X (FRONT): -16.09"  
Y (RIGHT): 40.39"  
Z (HEIGHT): 37.82"

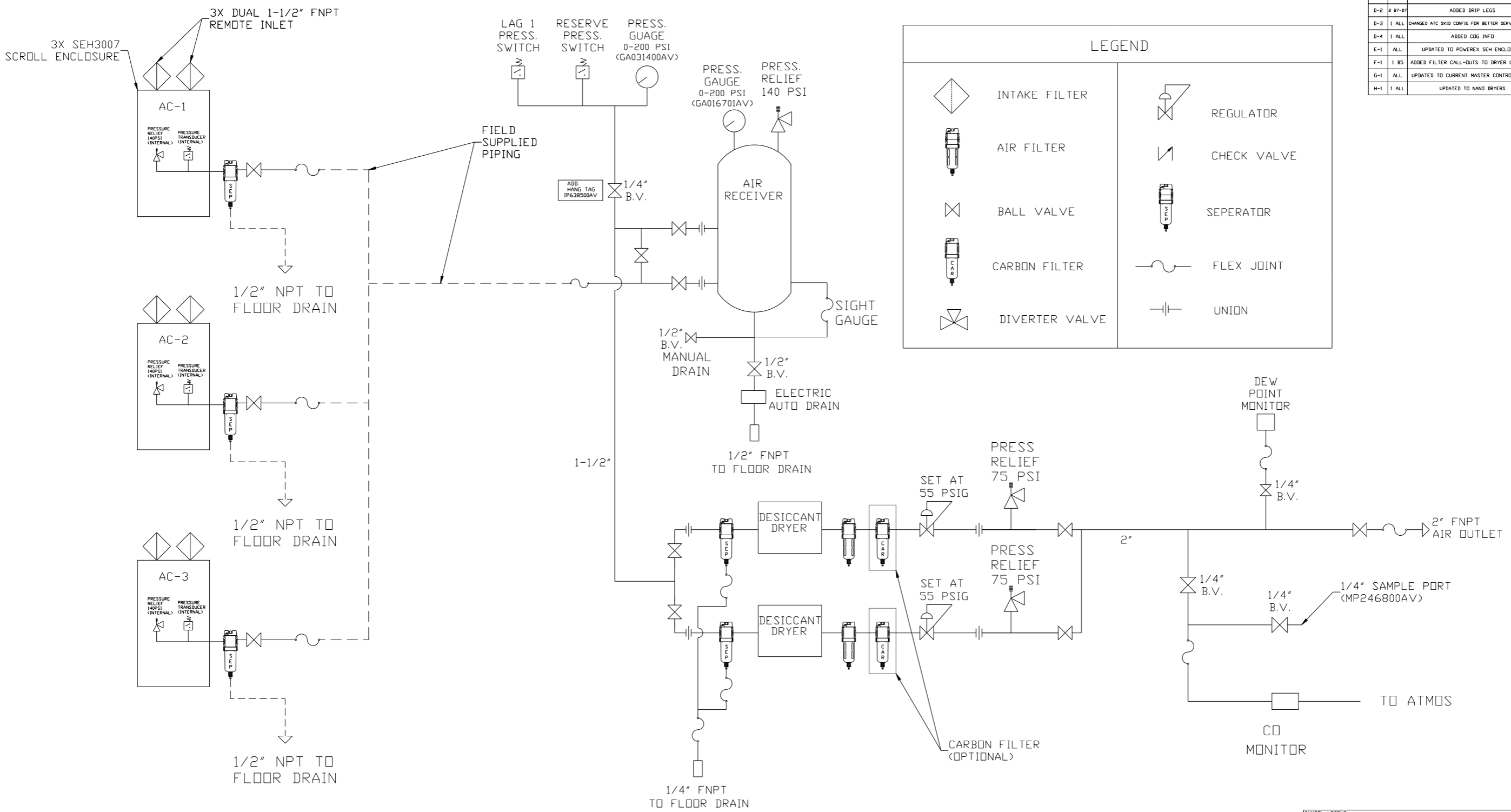
DRYER FRAME: AM107000AV

INDICATES CENTER OF GRAVITY  
SEH WEIGHT: 1640 LBS.

- NOTES:
- 1.) SHEET 1, UNIT LAYOUT.
  - 2.) SHEET 2, UNIT FLOW SCHEMATIC.
  - 3.) INLET CONNECTIONS: 1-1/2" FNPT X 6.
  - 4.) OUTLET CONNECTIONS: 2" FNPT X 1.
  - 5.) POWER CONNECTION: 1- 208, 230, OR 460 VOLT.
  - 6.) WHEN PACKAGE IS INSTALLED INTO THE FACILITY, MAKE SURE THAT THE INSTALLER REFERENCES TABLE 110.26 (A) (1) FOR MINIMUM WORKING AREA.

SYMBOL LEGEND		= ADDITIONAL CONTROL REQ'D		Drawings to conform to the current revision of the following ANSI standards:	
= MINUS DRAFT		= BRINELL HARDNESS		Y14.3 Multi and sectional view dgs. Y14.5M Dimensioning and tolerancing	
TOLERANCES NOT SPECIFIED		AUTOCAD REL2008 LT		DO NOT SCALE DRAWING FOR DIMENSIONS	
.XX ±		INCH		Sheet 1 of 2	
.XXX ±				SCALE 1:18	
<DEG> ±					
CONFIDENTIAL DISCLOSURE This drawing is the property of the CAMPBELL GROUP of the SCOTT FETZER COMPANY and subject to return on demand. Its contents are confidential and must not be copied or submitted to outside parties for use or examination.					
DRAWN BY		CHECKED BY		APPROVED BY	
AEK		GES		DMS DB	
10/1/07		10/1/07		10/1/07 10/1/07	
MATERIAL N/A					
PART NAME					
MEDICAL SCROLL 30HP TRIPLEX					
DWG NO MSET300					
SIZE D					

REV	ZONE	REVISION	DATE	ECN	NAME	CHKD
B-1	ALL	RELEASE TO PRODUCTION	10/1/07	2166B	AEK	GES
C-1	ALL	UPDATED BUILD & FLOW TO CURRENT STANDARD	6/3/08	21907	AEK	GES
C-2	ALL	CORRECTED INLET DETAILS	9/25/08	21907	AEK	GES
D-1	ALL	UPDATED PANEL & MONITORS	5/20/10	2234B	AEK	GES
D-2	2 B7-D7	ADDED DRIP LEGS	6/3/10	2234B	AEK	GES
D-3	1 ALL	CHANGED AYC SKID CONFIG FOR BETTER SERVICEABILITY	6/24/10	2234B	AEK	GES
D-4	1 ALL	ADDED COG INFO	12/7/10	2234B	AEK	GES
E-1	ALL	UPDATED TO POWEREX SEH ENCLOSURE	5/31/11	22394	AEK	GES
F-1	1 B5	ADDED FILTER CALL-OUTS TO DRYER CALL-OUT	8/19/11	22546	AEK	GES
G-1	ALL	UPDATED TO CURRENT MASTER CONTROL PANEL	9/4/13	PXEC0030	AEK	GES
H-1	1 ALL	UPDATED TO HAND DRYERS	8/10/17	PXEC0174	AEK	GES



LEGEND	
	INTAKE FILTER
	AIR FILTER
	BALL VALVE
	CARBON FILTER
	DIVERTER VALVE
	REGULATOR
	CHECK VALVE
	SEPERATOR
	FLEX JOINT
	UNION

- NOTES:  
 1.) SHEET 1, UNIT LAYOUT.  
 2.) SHEET 2, UNIT FLOW SCHEMATIC.  
 3.) INLET CONNECTIONS: 1-1/2" FNPT X 6.  
 4.) OUTLET CONNECTION: 2" FNPT X 1.  
 5.) POWER CONNECTION: 1- 208, 230, OR 460 VOLT.

SYMBOL LEGEND		= ADDITIONAL CONTROL REQ'D		Drawings to conform to the current revision of the following ANSI standards:	
= MINUS DRAFT		= BRINELL HARDNESS		Y14.3 Multi and sectional view dgs. Y14.5M Dimensioning and tolerancing	
TOLERANCES NOT SPECIFIED		AUTOCAD REL2008 LT		DO NOT SCALE DRAWING FOR DIMENSIONS	
.XX ±		INCH		Sheet 2 of 2	
.XXX ±				SCALE 1:18	
<<DEG>> ±					
CONFIDENTIAL DISCLOSURE This drawing is the property of the CAMPBELL GROUP of the SCOTT FETZER COMPANY and subject to return on demand. Its contents are confidential and must not be copied or submitted to outside parties for use or examination.					
DRAWN BY		CHECKED BY		APPROVED BY	
AEK		GES		DMS DB	
10/1/07		10/1/07		10/1/07 10/1/07	
MATERIAL N/A					
PART NAME ENCLOSED SCROLL FLOW SCHEMATIC					
DWG NO MSET300				SIZE D	