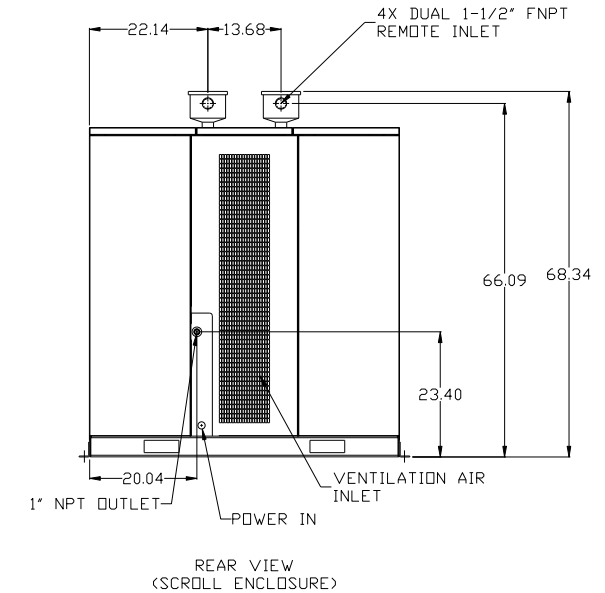
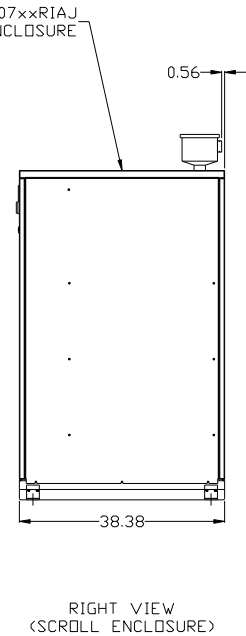
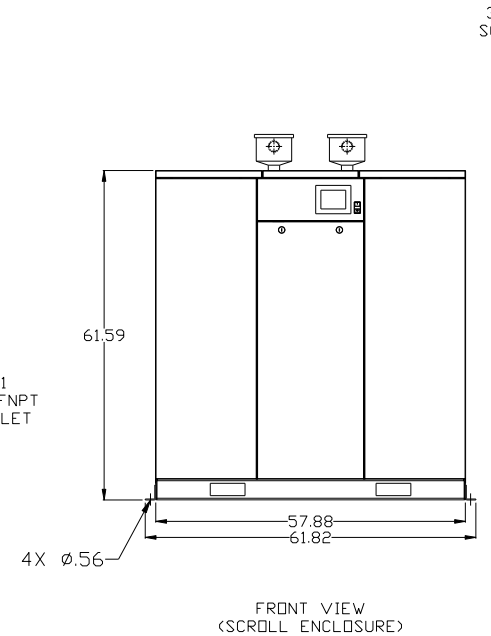
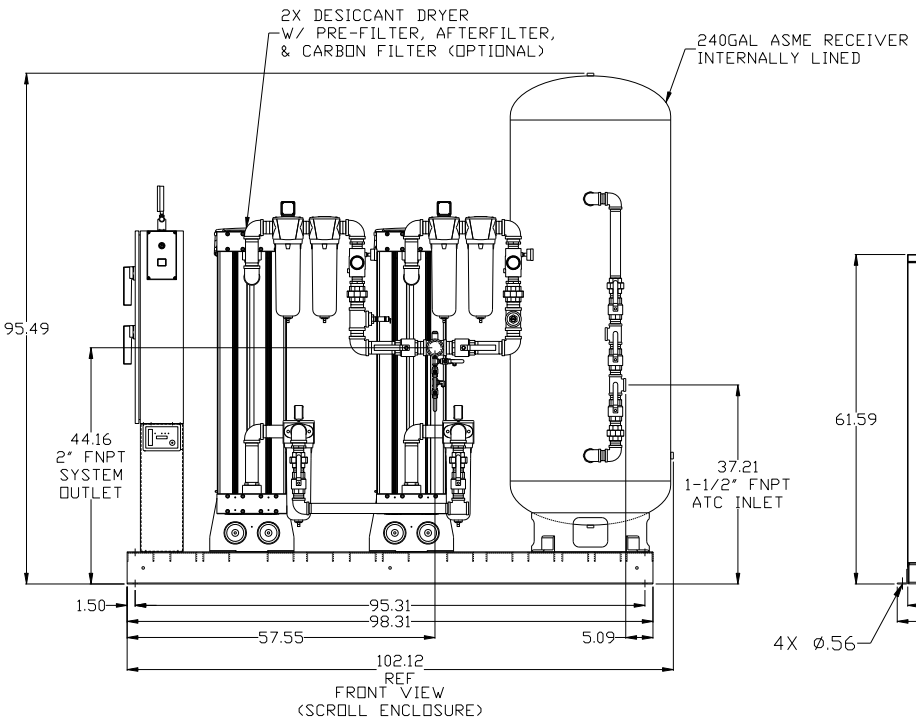
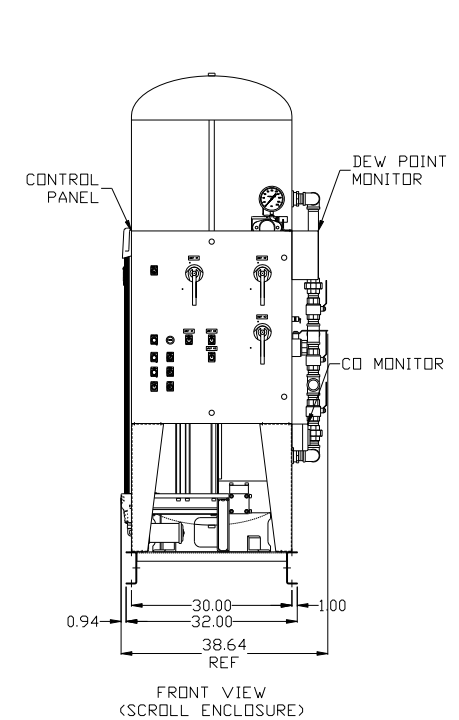
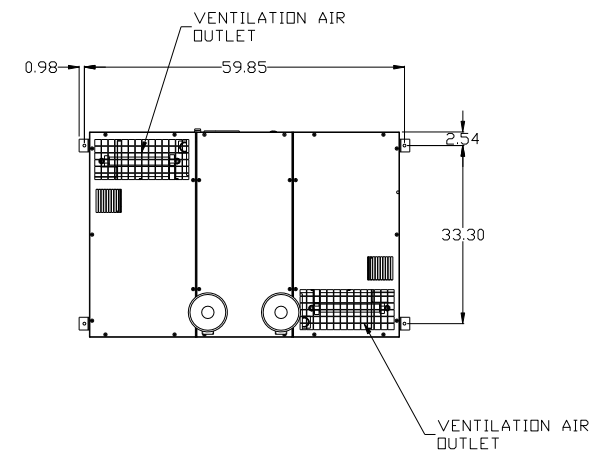
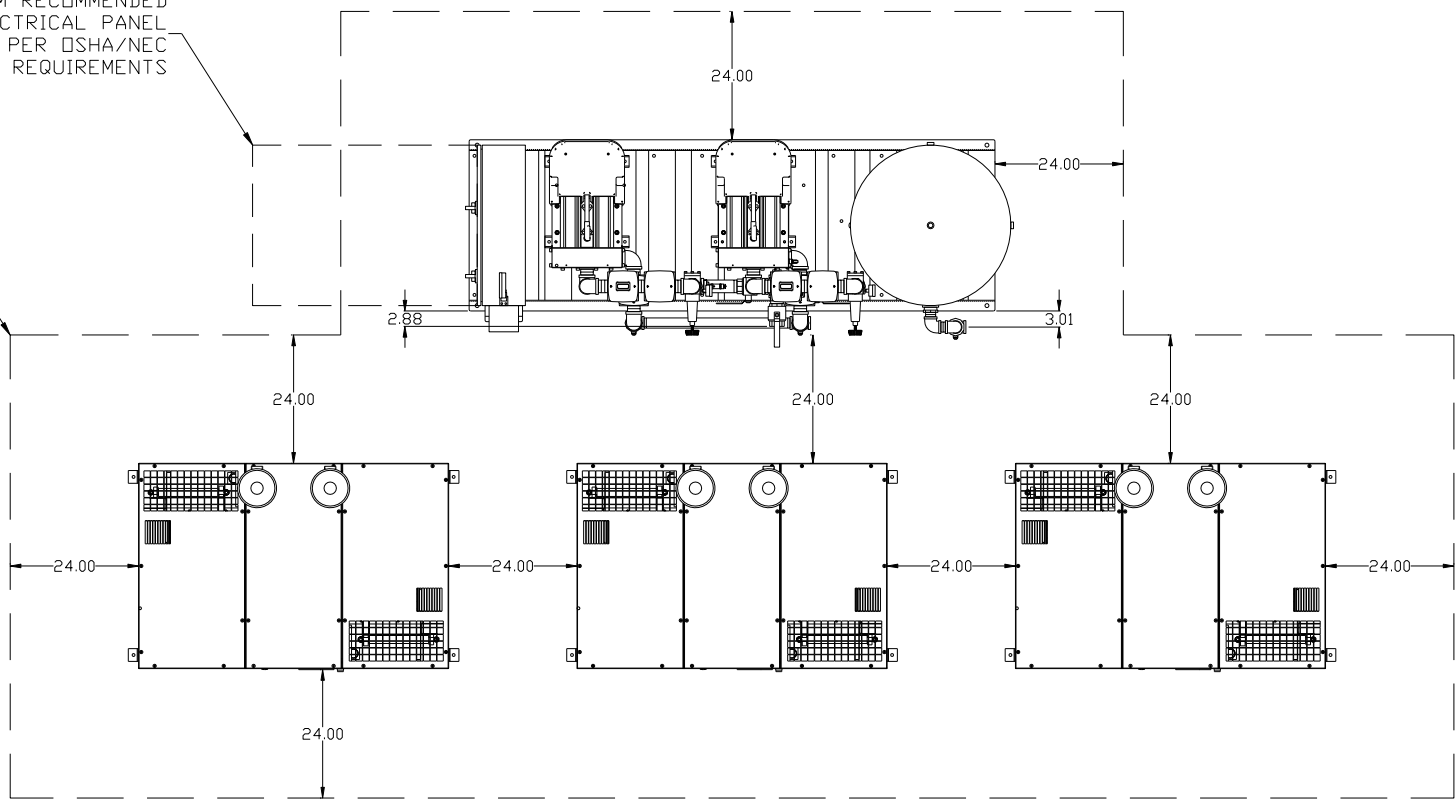


REV	ZONE	REVISION	DATE	ECN	NAME	CHKD
B-1	ALL	RELEASE TO PRODUCTION	10/1/07	21668	AEK	GES
C-1	ALL	UPDATED BUILD & FLOW TO CURRENT STANDARD	6/3/08	21907	AEK	GES
C-2	ALL	REMOVED BIVERTER VALVE FROM COMPRESSOR INLETS	9/5/08	21907	AEK	DMS
C-3	1 ALL	CORRECTED INLET DETAILS	10/9/08	21907	AEK	GES
C-4	1 A7	ADDED ENCLOSURE & TANK/DRYER SKID WEIGHTS TO BUILD	10/23/08	21907	AEK	GES
D-1	2 ALL	UPDATED FLOW TO CURRENT PRODUCTION	6/16/10	22348	AEK	GES
E-1	ALL	UPDATED TO POWEREX SED ENCLOSURE	5/31/11	22394	AEK	GES
F-1	1 B6	ADDED FILTER CALL-OUTS TO DRYER CALL-OUT	8/19/11	22546	AEK	GES
G-1	1 ALL	UPDATED TO NANO DRYERS	9/8/17	PXEC0174	AEK	GES
H-1	ALL	ADDED GAUGE TO FRONT/TOP VIEWS, LINED TANK	12/14/17	PXEC0187	GES	DMS

MINIMUM RECOMMENDED ELECTRICAL PANEL CLEARANCE PER OSHA/NEC REQUIREMENTS

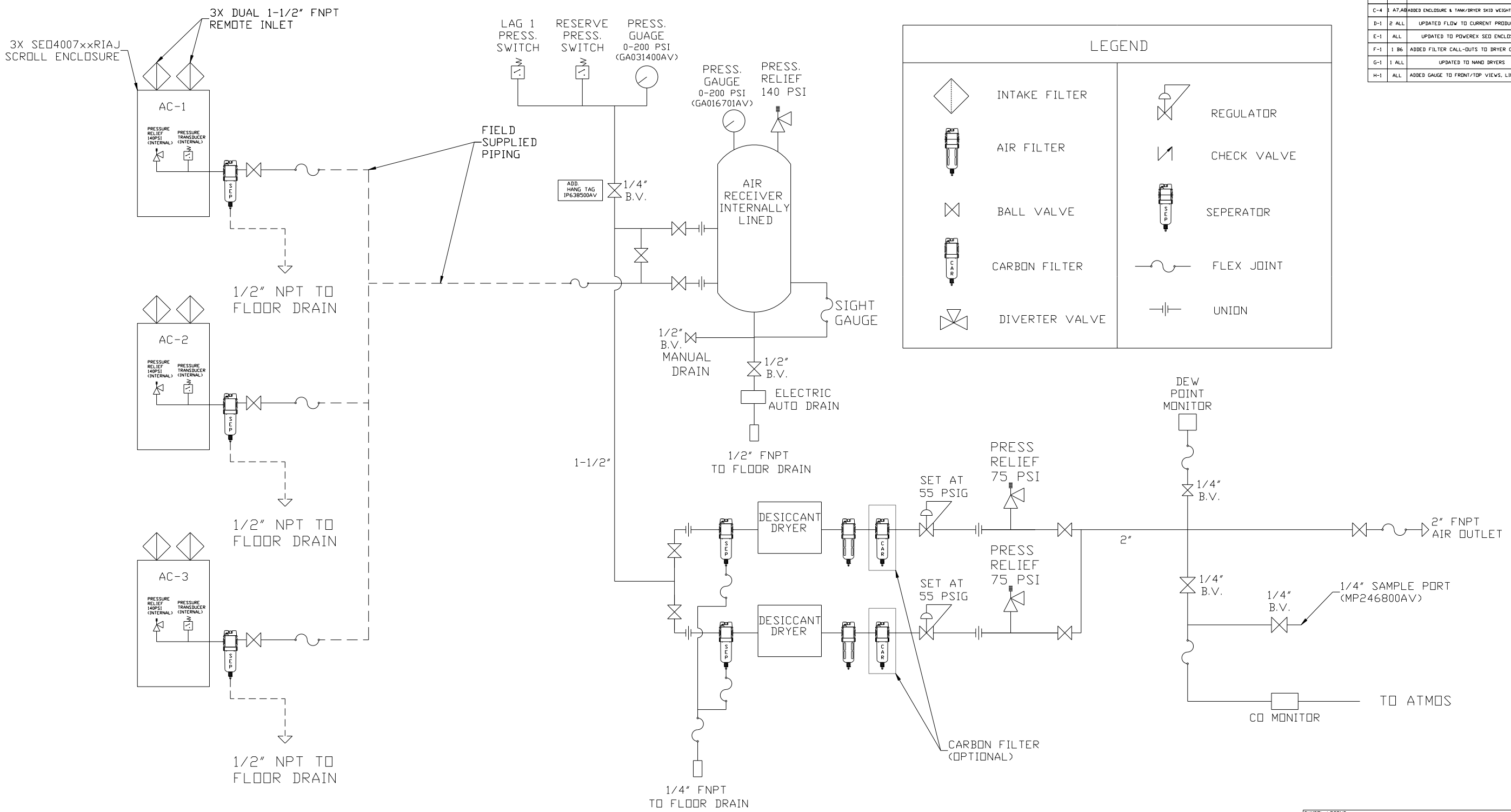
MINIMUM RECOMMENDED MAINTENANCE CLEARANCE



- NOTES:
- 1.) SHEET 1, UNIT LAYOUT.
 - 2.) SHEET 2, UNIT FLOW SCHEMATIC.
 - 3.) INLET CONNECTIONS: 1-1/2" FNPT X 3.
 - 4.) OUTLET CONNECTION: 2" FNPT X 1.
 - 5.) POWER CONNECTION: 1- 208, 230, OR 460 VOLT.
 - 6.) WHEN PACKAGE IS INSTALLED INTO THE FACILITY, MAKE SURE THAT THE INSTALLER REFERENCES TABLE 110.26 (A) (1) FOR MINIMUM WORKING AREA.

SYMBOL LEGEND ⊖ = MINUS DRAFT ⊕ = PLUS DRAFT ⊕ = ADDITIONAL CONTROL REQ'D HRC = BRINELL HARDNESS		Drawings to conform to the current revision of the following ANSI standards: Y14.3 Multi and sectional view dgs. Y14.5M Dimensioning and tolerancing	
TOLERANCES NOT SPECIFIED .XX ± .XXX ± \angle(DEG) ±		DO NOT SCALE FOR DIMENSIONS Sheet 1 of 2 SCALE 1:18 AUTOCAD REL2008 LT	
CONFIDENTIAL DISCLOSURE This drawing is the property of POWEREX, INC. or the SCOTT FETZER COMPANY and subject to return on demand. Its contents are confidential and must not be copied or submitted to outside parties for use or examination.		DRAWN BY: AEK CHECKED BY: GES APPROVED BY: ENGINEERING MFG/MKTG 10/1/07 10/1/07 10/1/07 10/1/07	
MATERIAL: N/A		POWEREX 150 PRODUCTION DRIVE, HARRISON, OHIO 45030 Ph: 888-769-7979 FAX: (513) 367-3125	
PART NAME: MEDICAL SCROLL 40HP TRIPLEX		DWG NO: MSET400 SIZE: D	

REV	ZONE	REVISION	DATE	ECN	NAME	CHKD
B-1	ALL	RELEASE TO PRODUCTION	10/1/07	21668	AEK	GES
C-1	ALL	UPDATED BUILD & FLOW TO CURRENT STANDARD	6/3/08	21907	AEK	GES
C-2	ALL	REMOVED DIVERTER VALVE FROM COMPRESSOR INLETS	9/5/08	21907	AEK	DMS
C-3	1 ALL	CORRECTED INLET DETAILS	10/9/08	21907	AEK	GES
C-4	1 A7	ADDED ENCLOSURE & TANK/DRYER SKID WEIGHTS TO BUILD	10/23/08	21907	AEK	GES
D-1	2 ALL	UPDATED FLOW TO CURRENT PRODUCTION	6/16/10	22348	AEK	GES
E-1	ALL	UPDATED TO POWEREX SED ENCLOSURE	5/31/11	22394	AEK	GES
F-1	1 B6	ADDED FILTER CALL-OUTS TO DRYER CALL-OUT	8/19/11	22546	AEK	GES
G-1	1 ALL	UPDATED TO NANO DRYERS	9/8/17	PXEC0174	AEK	GES
H-1	ALL	ADDED GAUGE TO FRONT/TOP VIEWS, LINED TANK	12/14/17	PXEC0187	GES	DMS



	INTAKE FILTER		REGULATOR
	AIR FILTER		CHECK VALVE
	BALL VALVE		SEPERATOR
	CARBON FILTER		FLEX JOINT
	DIVERTER VALVE		UNION

- NOTES:
- 1.) SHEET 1, UNIT LAYOUT.
 - 2.) SHEET 2, UNIT FLOW SCHEMATIC.
 - 3.) INLET CONNECTIONS: 1-1/2" FNPT X 3.
 - 4.) OUTLET CONNECTION: 2" FNPT X 1.
 - 5.) POWER CONNECTION: 1- 208, 230, OR 460 VOLT.

SYMBOL LEGEND		= ADDITIONAL CONTROL REQ'D		Drawings to conform to the current revision of the following ANSI standards:	
= MINUS DRAFT		= BRINELL HARDNESS		Y14.3 Multi and sectional view dgs. Y14.5M Dimensioning and tolerancing	
TOLERANCES NOT SPECIFIED		AUTOCAD REL2008 LT		DO NOT SCALE DRAWING FOR DIMENSIONS	
.XX ±		INCH		Sheet 2 of 2	
.XXX ±				SCALE 1:18	
<<DEG>> ±					
CONFIDENTIAL DISCLOSURE This drawing is the property of POWEREX, INC. of the SCOTT FETZER COMPANY and subject to return on demand. Its contents are confidential and must not be copied or submitted to outside parties for use or examination.					
DRAWN BY		CHECKED BY		APPROVED BY	
AEK		GES		DMS DB	
10/1/07		10/1/07		10/1/07 10/1/07	
MATERIAL N/A					
PART NAME ENCLOSED SCROLL FLOW SCHEMATIC					
DWG NO MSET400				SIZE D	