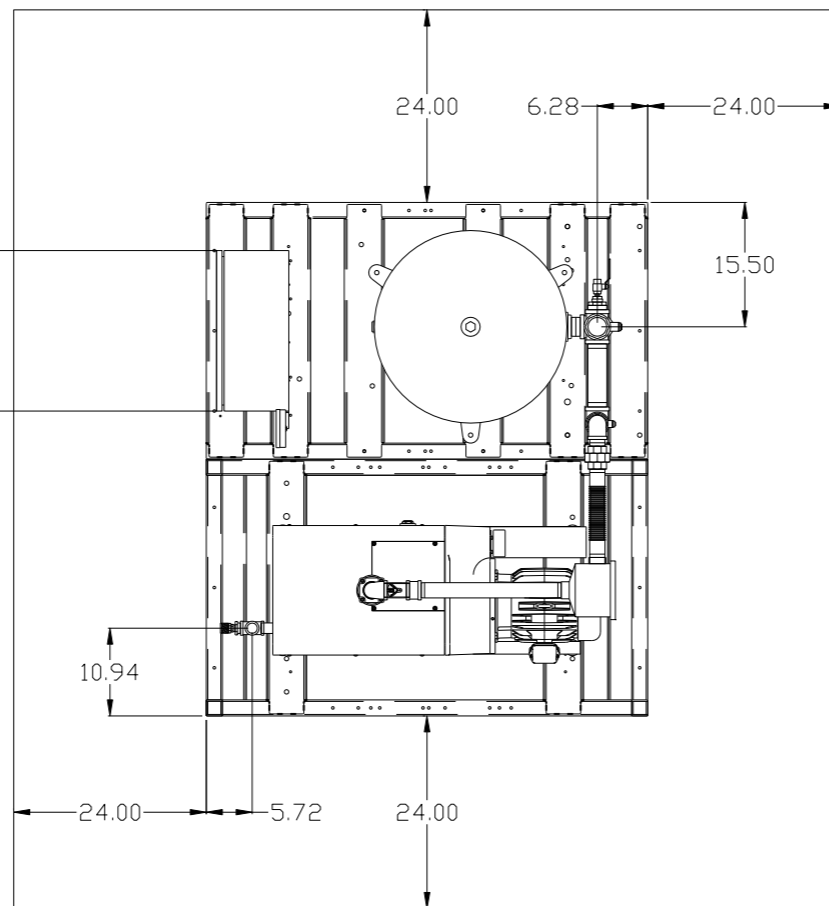
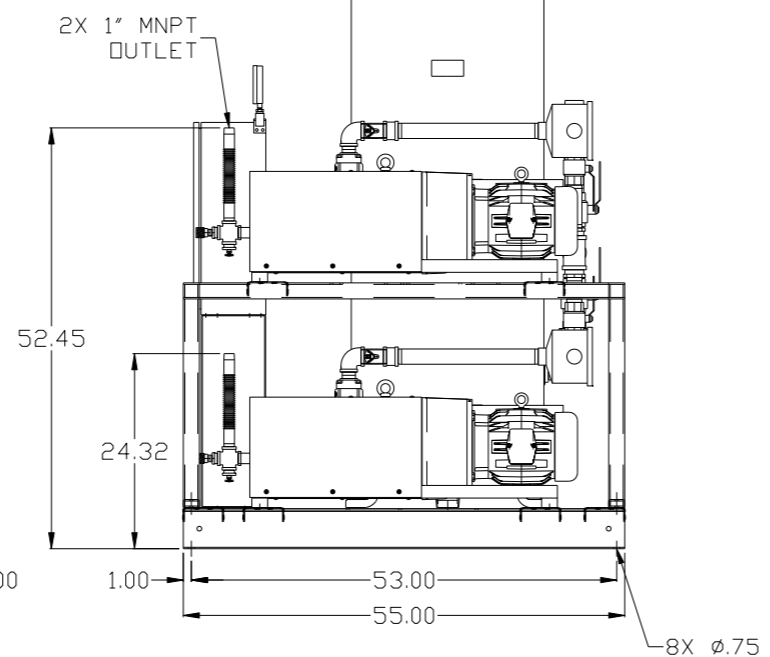
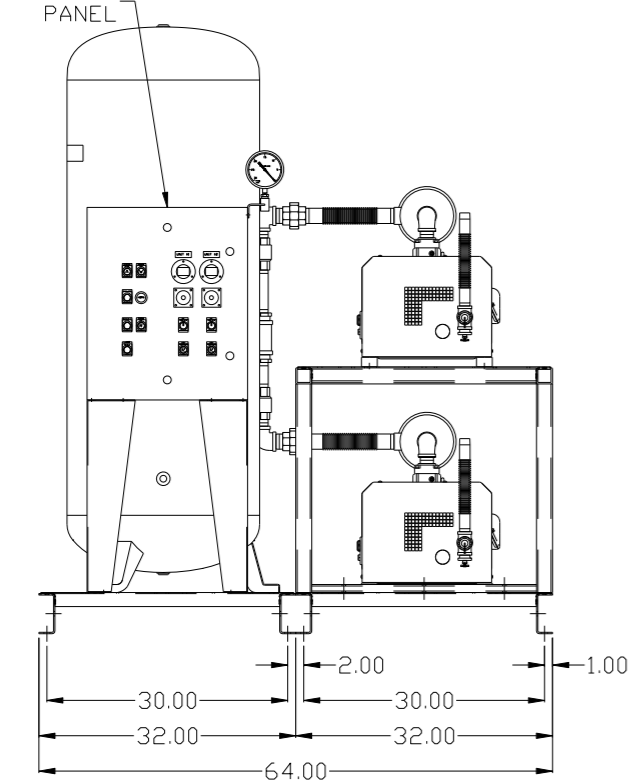


REV	ZONE	REVISION	DATE	ECN	NAME	CHKD
B-1	ALL	RELEASE TO PRODUCTION	6/27/08	21906	AEK	GES
C-1	1 ALL	REMOVED VACUUM SWITCHES FROM CONTROL PANEL	11/12/09	22127	AEK	GES
D-1	2 C3	ADDED DRIP LEGS	1/3/12	22723	AEK	DMS
E-1	2 B6 2 ALL ALL	ADDED SIGHT GAUGE ADDED SOURCE VALVE INFORMATION ADDED P&ID SHEETS MADE HIGH TEMP STANDARD	1/21/14	PXEC0067	AEK	GES
F-1	1 ALL	UPDATED TO PUMP WITH NEMA RATED MOTOR	8/1/16	PXEC0149	AEK	GES

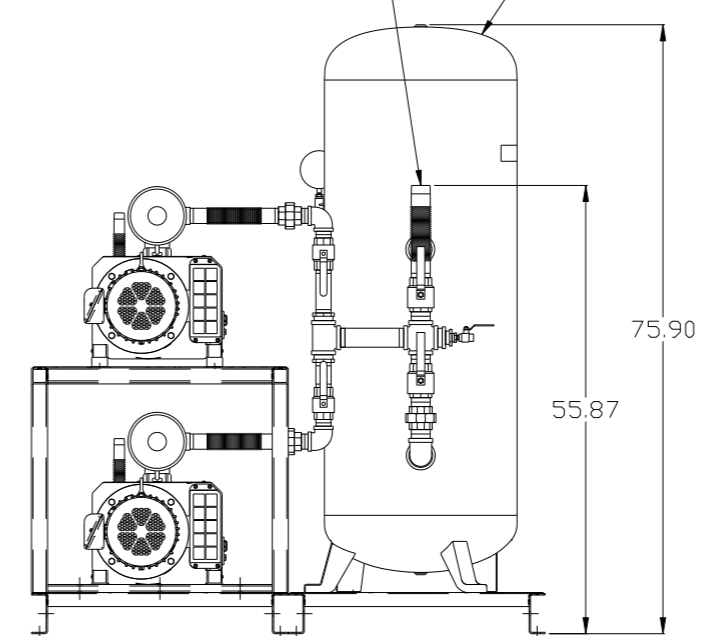
MINIMUM RECOMMENDED ELECTRICAL PANEL CLEARANCE PER OSHA /NEC REQUIREMENTS



CONTROL PANEL  
MINIMUM RECOMMENDED MAINTENANCE CLEARANCE



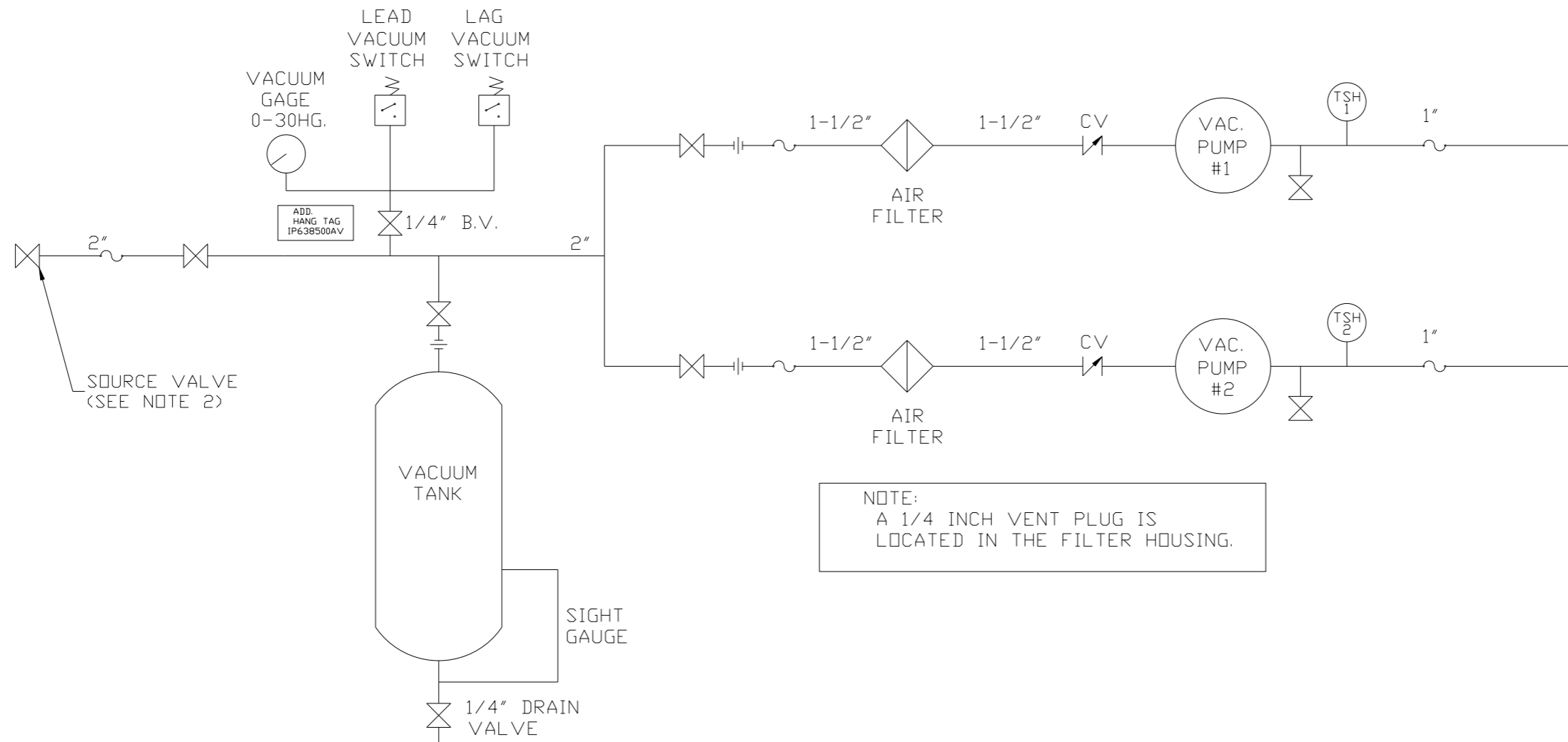
2" MNPT INLET  
120GAL ASME RECEIVER



NOTE: SYSTEM DESIGNED IN COMPLIANCE WITH U.S. NFPA '99, LATEST EDITION.

<b>SYMBOL LEGEND</b> ⊖ = MINUS DRAFT ⊕ = PLUS DRAFT Ⓢ = ADDITIONAL CONTROL REQ'D Ⓢ = BRINELL HARDNESS		Drawings to conform to the current revision of the following ANSI standards: Y14.3 Multi and sectional view dsgs. Y14.5M Dimensioning and tolerancing	
<b>TOLERANCES NOT SPECIFIED</b> .XX ± .XXX ± <DEG> ±		<b>DO NOT SCALE DRAWING FOR DIMENSIONS</b> AUTOCAD REL2008 LT INCH Sheet 1 of 2 SCALE 1:12	
<b>CONFIDENTIAL DISCLOSURE</b> This drawing is the property of POWEREX, INC. of the SCOTT FEITZER COMPANY and subject to return on demand. Its contents are confidential and must not be copied or submitted to outside parties for use or examination.		<b>DRAWN BY</b> AEK <b>CHECKED BY</b> GES <b>APPROVED BY</b> ENGINEERING MFG/MKTG DMS RJR 6/27/08 6/27/08 6/27/08 6/27/08	
<b>MATERIAL</b> N/A		<b>POWEREX</b> 150 PRODUCTION DRIVE, HARRISON, OHIO 45030 Ph: 888-769-7979 FAX: (513) 367-3125	
<b>PART NAME</b> 5HP CLAW VAC 120 GAL DUPLEX		<b>DWG NO</b> CVPD0504A <b>SIZE</b> D	

REV	ZONE	REVISION	DATE	ECN	NAME	CHKD
B-1	ALL	RELEASE TO PRODUCTION	6/27/08	21906	AEK	GES
C-1	1 ALL	REMOVED VACUUM SWITCHES FROM CONTROL PANEL	11/12/09	22127	AEK	GES
D-1	2 C3	ADDED DRIP LEGS	1/5/12	22723	AEK	DMS
E-1	2 B6 2 ALL ALL	ADDED SIGHT GAUGE ADDED SOURCE VALVE INFORMATION ADDED P&ID SHEETS MADE HIGH TEMP STANDARD	1/21/14	PXEC0067	AEK	GES
F-1	1 ALL	UPDATED TO PUMP WITH NEMA RATED MOTOR	8/1/16	PXEC0149	AEK	GES



NOTE:  
A 1/4 INCH VENT PLUG IS  
LOCATED IN THE FILTER HOUSING.

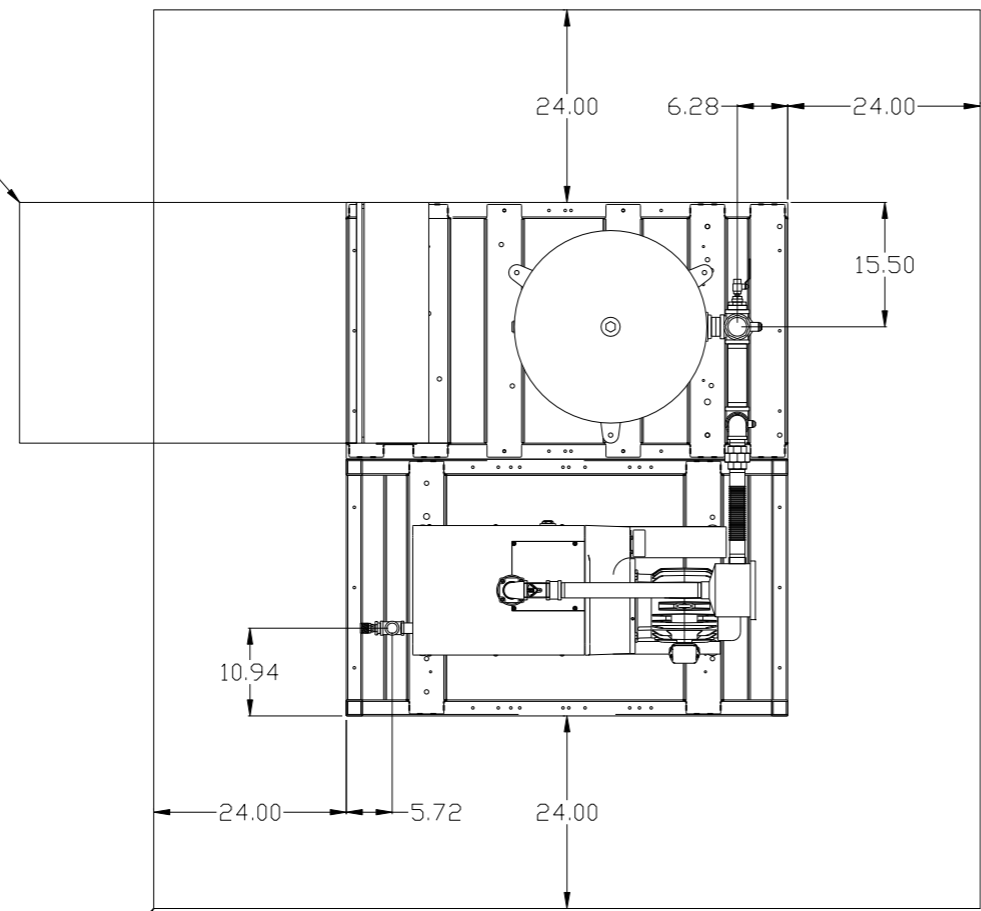
NOTES:  
1) TSH - TEMPERATURE SWITCH HIGH  
2) PER NFPA THE SYSTEM WILL REQUIRE A SOURCE VALVE (SUPPLIED BY OTHERS).

LEGEND	
	TEMP. SWITCH
	VACUUM SWITCH
	AIR FILTER
	BALL VALVE
	CHECK VALVE
	FLEX LINE
	UNION

SYMBOL LEGEND			ADDITIONAL CONTROL REQ'D	Drawings to conform to the current revision of the following ANSI standards: Y14.3 Multi and sectional view dgs. Y14.5M Dimensioning and tolerancing	
	MINUS DRAFT		BRINELL HARDNESS		
TOLERANCES NOT SPECIFIED		AUTOCAD REL2008 LT	DO NOT SCALE DRAWING FOR DIMENSIONS		
.XX ±	.XXX ±	<< DEG > ±	INCH	Sheet 2 of 2	
CONFIDENTIAL DISCLOSURE This drawing is the property of POWEREX, INC. of the SCOTT FETZER COMPANY and subject to return on demand. Its contents are confidential and must not be copied or submitted to outside parties for use or examination.		DRAWN BY AEK	CHECKED BY GES	APPROVED BY ENGINEERING DMS	MFG/MKTG RJR
MATERIAL N/A		6/27/08	6/27/08	6/27/08	6/27/08
PART NAME DUPLEX CLAW VAC FLOW SCHEMATIC		 150 PRODUCTION DRIVE, HARRISON, OHIO 45030 Ph: 888-769-7979 FAX: (513) 367-3125		SCALE 1:12	
DWG NO CVPD0504A		SIZE D			

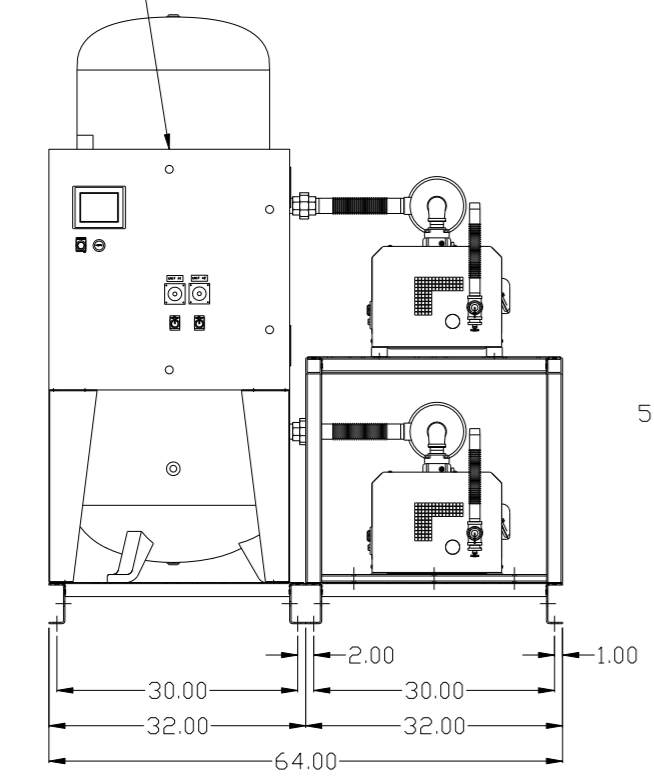
REV	ZONE	REVISION	DATE	ECN	NAME	CHKD
2	B6	ADDED SIGHT GAUGE				
E-1	ALL	ADDED SOURCE VALVE INFORMATION ADDED P&MI SHEETS MADE HIGH TEMP STANDARD	1/21/14	PXEC0067	AEK	GES
F-1	ALL	UPDATED TO PUMP WITH NEMA RATED MOTOR	8/1/16	PXEC0149	AEK	GES

MINIMUM RECOMMENDED ELECTRICAL PANEL CLEARANCE PER OSHA /NEC REQUIREMENTS

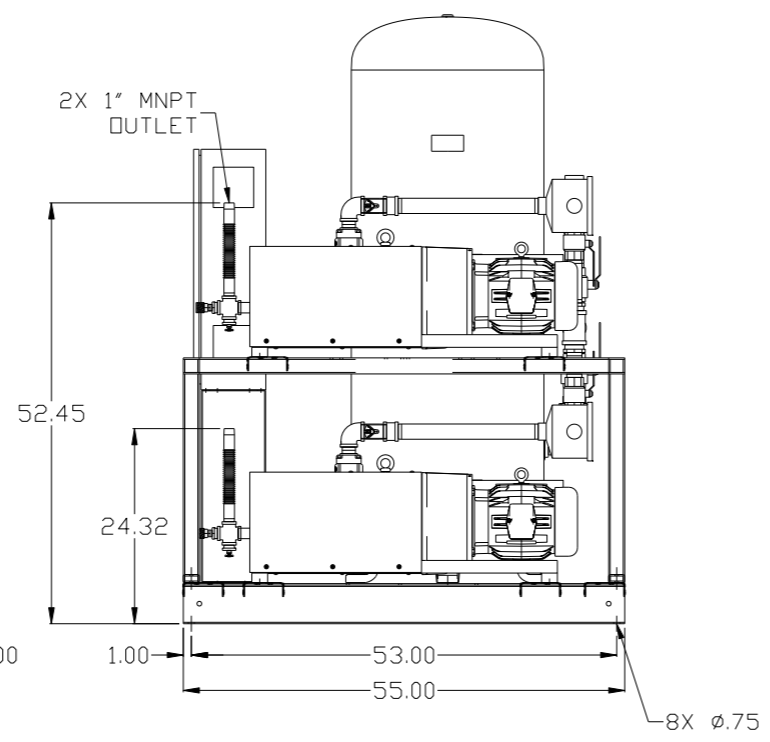


PBMI/HMI CONTROL PANEL

MINIMUM RECOMMENDED MAINTENANCE CLEARANCE

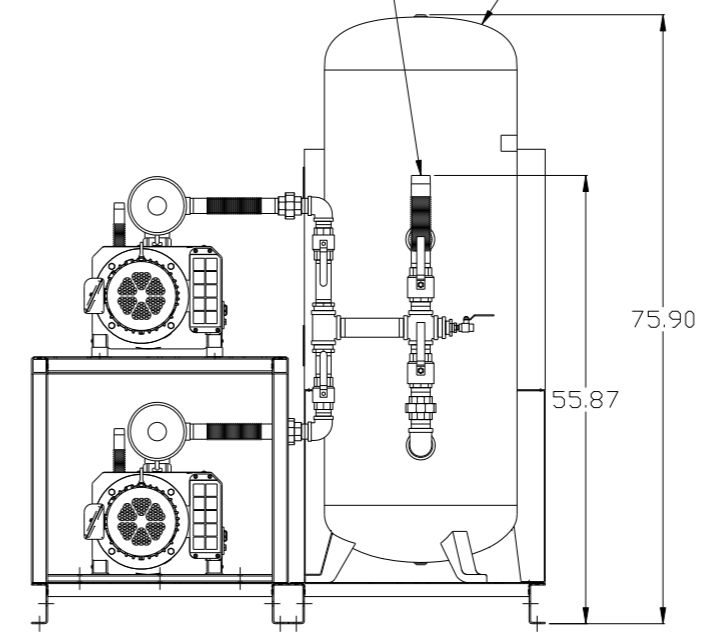


2X 1" MNPT OUTLET



2" MNPT INLET

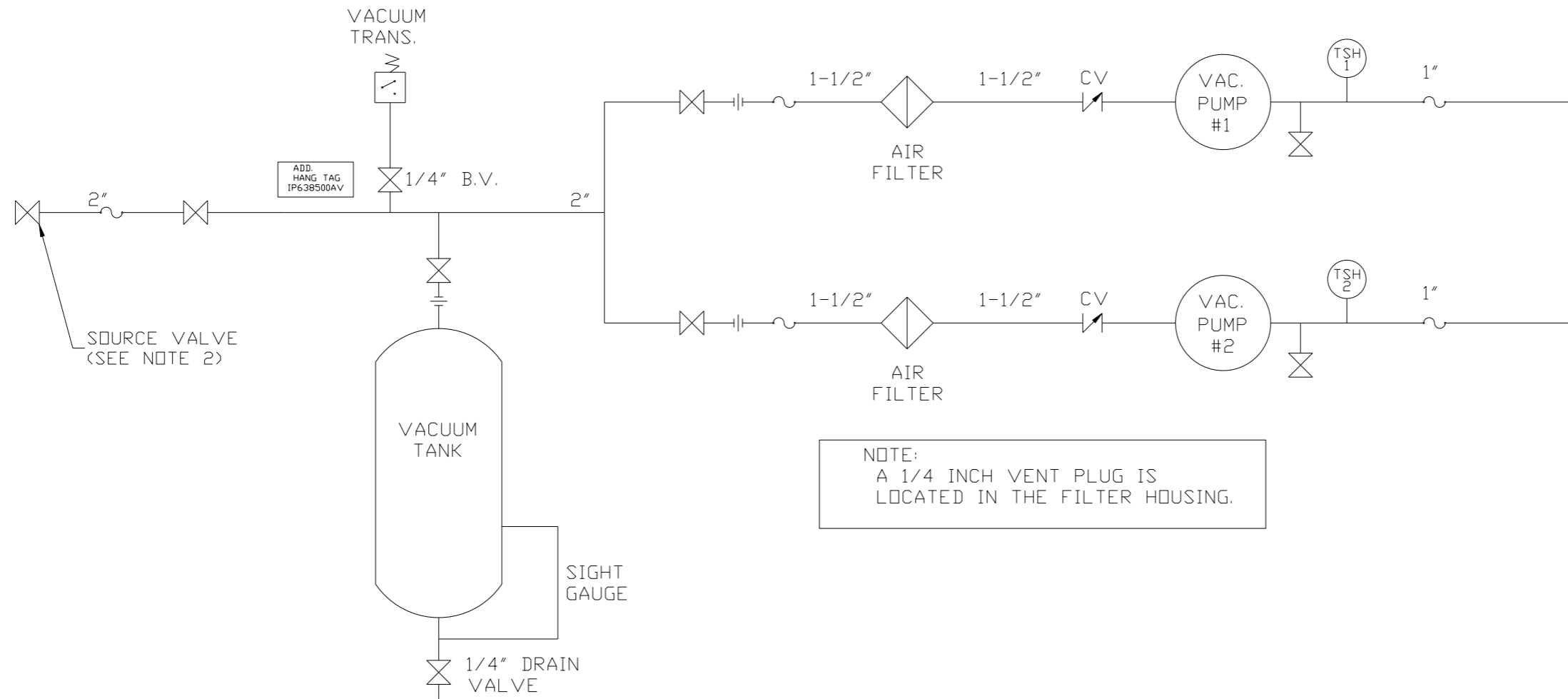
120GAL ASME RECEIVER



NOTE: SYSTEM DESIGNED IN COMPLIANCE WITH U.S. NFPA '99, LATEST EDITION.

<b>SYMBOL LEGEND</b> ⊖ = MINUS DRAFT ⊕ = PLUS DRAFT ⊕ = BRINELL HARDNESS		= ADDITIONAL CONTROL REQ'D = BRINELL HARDNESS		Drawings to conform to the current revision of the following ANSI standards: Y14.3 Multi and sectional view dsgs. Y14.5M Dimensioning and tolerancing
TOLERANCES NOT SPECIFIED .XX ± .XXX ± <math>\angle</math> DEG ±		AUTOCAD REL2014 LT INCH		DO NOT SCALE DRAWING FOR DIMENSIONS Sheet 1 of 2 SCALE 1:12
<b>CONFIDENTIAL DISCLOSURE</b> This drawing is the property of POWEREX, INC. of the SCOTT FEITZER COMPANY and subject to return on demand. Its contents are confidential and must not be copied or submitted to outside parties for use or examination.		DRAWN BY AEK	CHECKED BY GES	APPROVED BY ENGINEERING MFG/MKTG DMS RJR
MATERIAL N/A		1/21/14	1/21/14	1/21/14 1/21/14
PART NAME 5HP CLAW VAC 120 GAL DUPLEX		 150 PRODUCTION DRIVE, HARRISON, OHIO 45030 Ph: 888-769-7979 FAX: (513) 367-3125		DWG NO CVPD0504A SIZE D

REV	ZONE	REVISION	DATE	ECN	NAME	CHKD
2	B6	ADDED SIGHT GAUGE				
E-1	ALL	ADDED SOURCE VALVE INFORMATION ADDED P&MI SHEETS MADE HIGH TEMP STANDARD	1/21/14	PXEC0067	AEK	GES
F-1	ALL	UPDATED TO PUMP WITH NEMA RATED MOTOR	8/1/16	PXEC0149	AEK	GES



NOTE:  
A 1/4 INCH VENT PLUG IS  
LOCATED IN THE FILTER HOUSING.

LEGEND	
	TEMP. SWITCH
	AIR FILTER
	BALL VALVE
	VACUUM SWITCH
	CHECK VALVE
	FLEX LINE
	UNION

NOTES:  
1) TSH - TEMPERATURE SWITCH HIGH  
2) PER NFPA THE SYSTEM WILL REQUIRE A SOURCE VALVE (SUPPLIED BY OTHERS).

SYMBOL LEGEND		= ADDITIONAL CONTROL REQ'D		Drawings to conform to the current revision of the following ANSI standards	
= MINUS DRAFT		= BRINELL HARDNESS		Y14.3 Multi and sectional view deqs. Y14.5M Dimensioning and tolerancing	
= PLUS DRAFT					
TOLERANCES NOT SPECIFIED		AUTOCAD REL2014 LT		DO NOT SCALE DRAWING FOR DIMENSIONS	
.XX ±		INCH		Sheet 2 of 2	
.XXX ±				SCALE 1:12	
<DEG> ±					
CONFIDENTIAL DISCLOSURE This drawing is the property of POWEREX, INC. of the SCOTT FETZER COMPANY and subject to return on demand. Its contents are confidential and must not be copied or submitted to outside parties for use or examination.					
DRAWN BY		CHECKED BY		APPROVED BY	
AEK		GES		DMS RJR	
1/21/14		1/21/14		1/21/14 1/21/14	
MATERIAL N/A					
PART NAME DUPLEX CLAW VAC FLOW SCHEMATIC				 150 PRODUCTION DRIVE, HARRISON, OHIO 45030 Ph: 888-769-7979 FAX: (513) 367-3125	
DWG NO CVPD0504A				SIZE D	