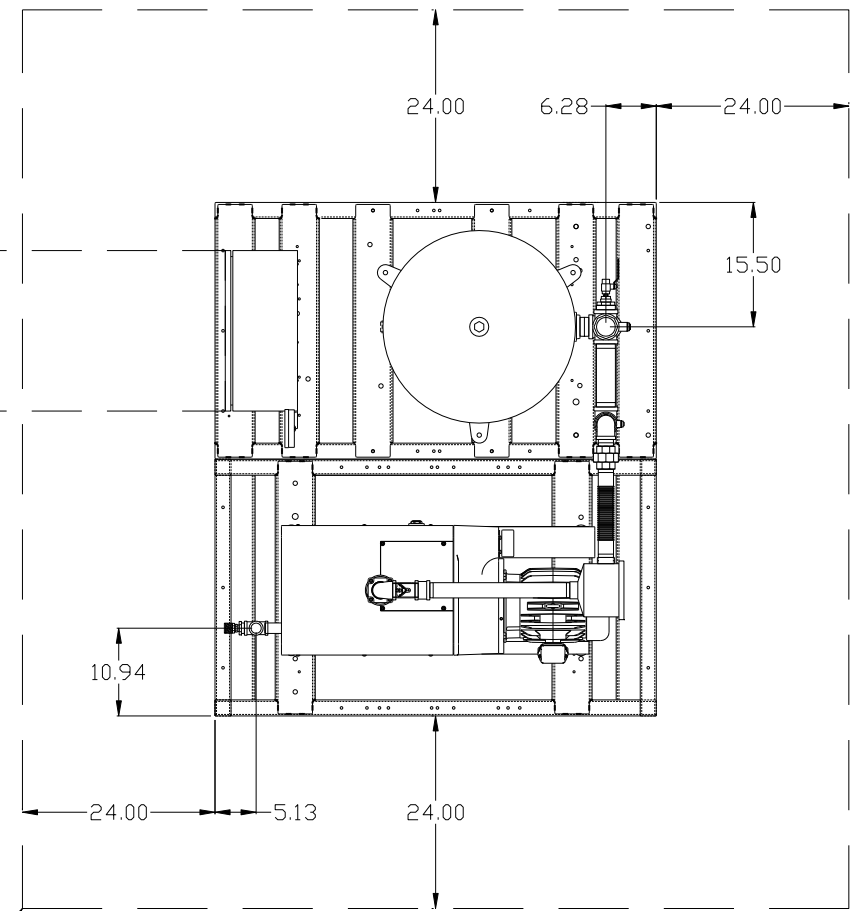


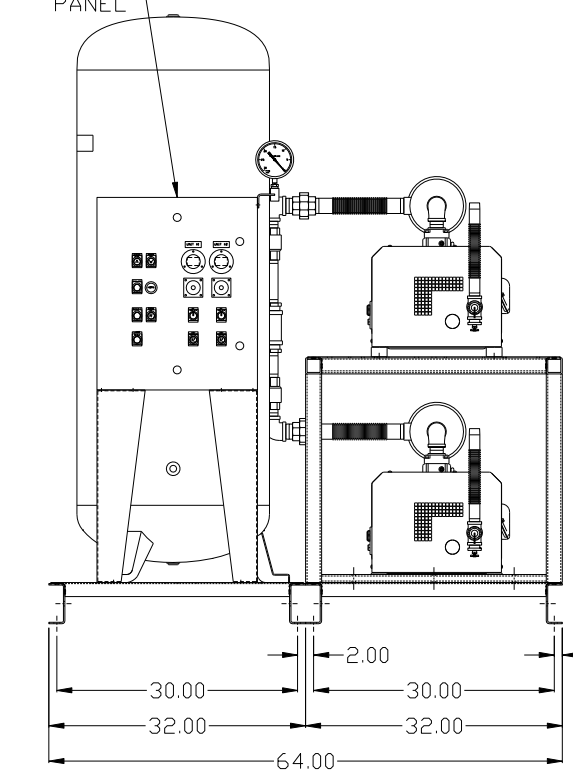
REV	ZONE	REVISION	DATE	ECN	NAME	CHKD
B-1	ALL	RELEASE TO PRODUCTION	6/27/08	21906	AEK	GES
C-1	1 ALL	REMOVED VACUUM SWITCHES FROM CONTROL PANEL	11/12/09	22127	AEK	GES
D-1	ALL	ADDED SHEETS 3 & 4	12/21/10	22348	AEK	GES
E-1	2 B6 2 ALL	ADDED SIGHT GAUGE ADDED SOURCE VALVE INFORMATION	10/2/12	22723	AEK	DMS
F-1	ALL	ADDED PHMI SHEETS	5/22/13	PXEC0030	AEK	GES
G-1	1 ALL	UPDATED TO PUMP WITH NEMA RATED MOTOR	8/2/16	PXEC0149	AEK	GES

MINIMUM RECOMMENDED ELECTRICAL PANEL CLEARANCE PER OSHA /NEC REQUIREMENTS

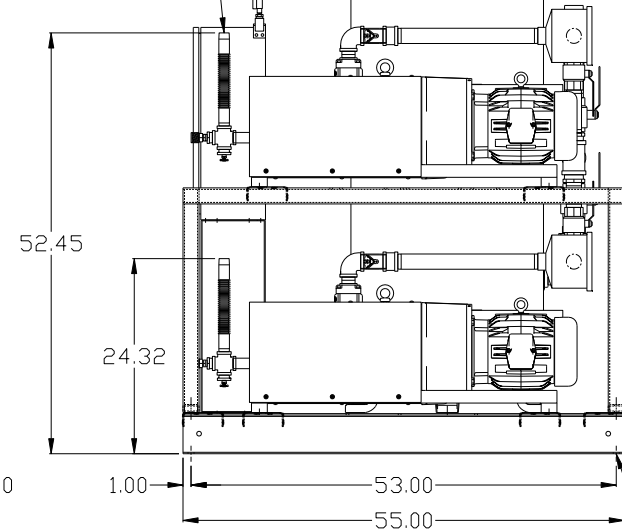


MINIMUM RECOMMENDED MAINTENANCE CLEARANCE

CONTROL PANEL

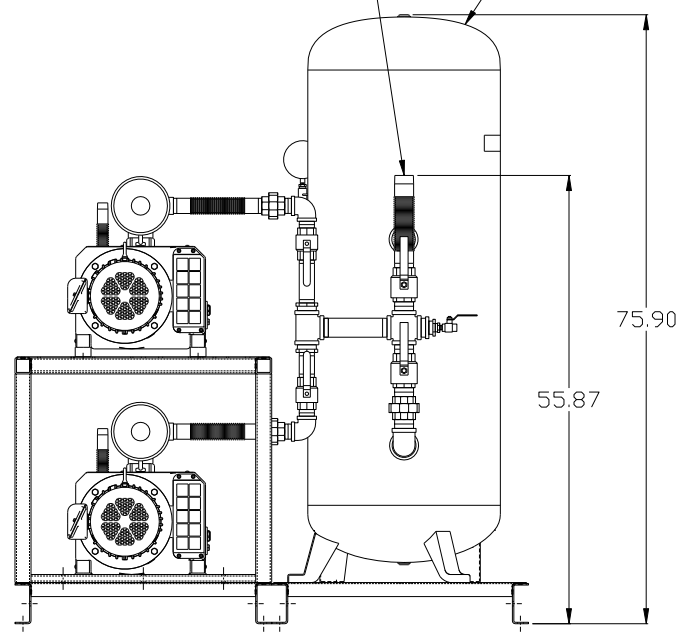


2X 1" MNPT OUTLET



8X Ø.75

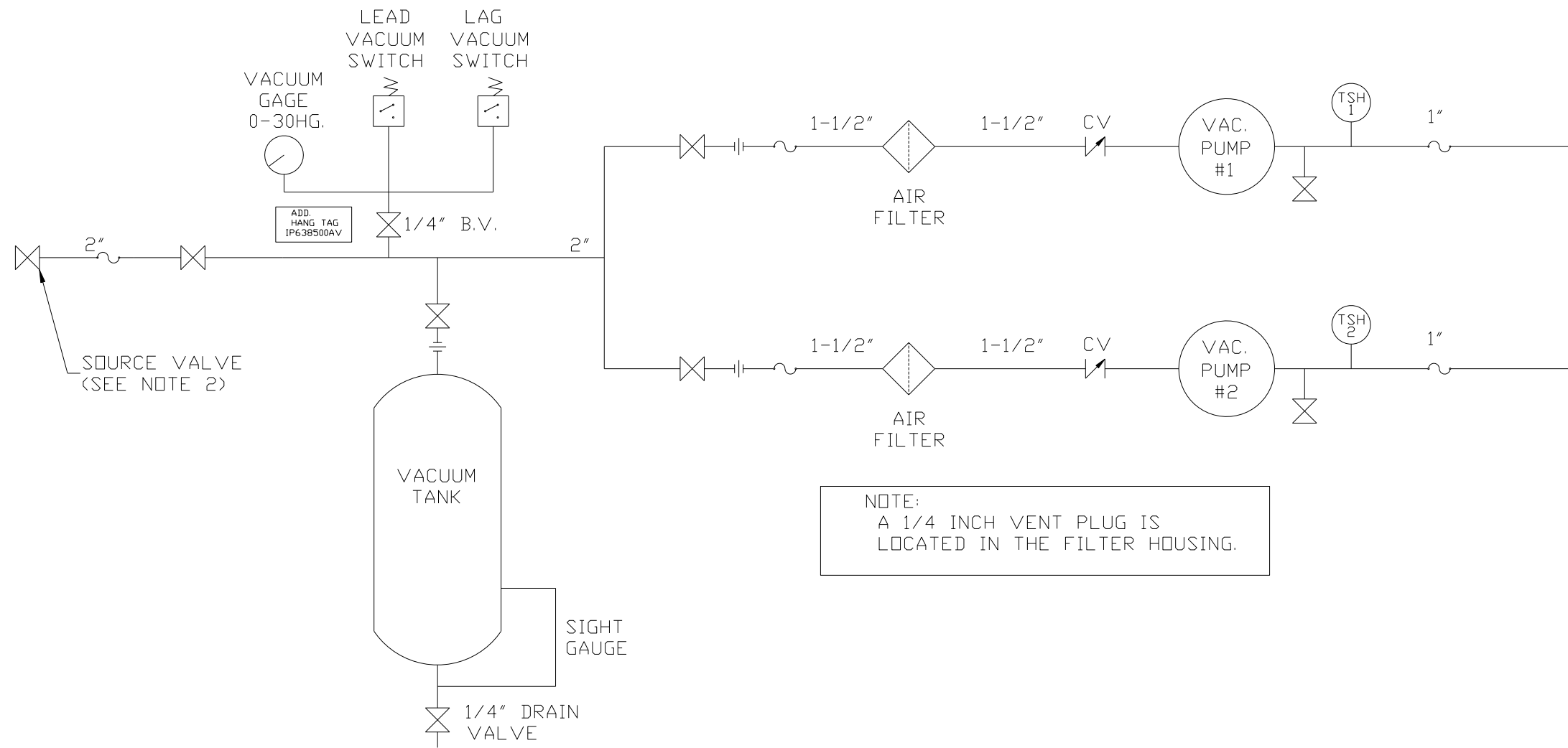
2" MNPT INLET  
120GAL ASME RECEIVER



NOTE: SYSTEM DESIGNED IN COMPLIANCE WITH U.S. NFPA '99, LATEST EDITION.

<b>SYMBOL LEGEND</b> ⊖ = MINUS DRAFT ⊕ = PLUS DRAFT Ⓢ = ADDITIONAL CONTROL REQ'D Ⓜ = BRINELL HARDNESS		Drawings to conform to the current revision of the following ANSI standards: Y14.3 Multi and sectional view dgs. Y14.5M Dimensioning and tolerancing	
TOLERANCES NOT SPECIFIED .XX ± .XXX ± <math>\angle</math> (DEG) ±		AUTOCAD REL2008 LT <b>INCH</b>	
DO NOT SCALE DRAWING FOR DIMENSIONS Sheet 1 of 4 SCALE 1:12		CONFIDENTIAL DISCLOSURE This drawing is the property of the CAMPBELL GROUP OF THE SCOTT FETZER COMPANY and subject to return on demand. Its contents are confidential and must not be copied or submitted to outside parties for use or examination.	
MATERIAL N/A		DRAWN BY AEK CHECKED BY GES 6/27/08	
PART NAME 5HP CLAW VAC 120 GAL DUPLEX		APPROVED BY ENGINEERING MFG/MKTG DMS RJR 6/27/08 6/27/08 6/27/08 6/27/08	
DWG NO CVPD0504B		SIZE D	

REV	ZONE	REVISION	DATE	ECN	NAME	CHKD
B-1	ALL	RELEASE TO PRODUCTION	6/27/08	21906	AEK	GES
C-1	1 ALL	REMOVED VACUUM SWITCHES FROM CONTROL PANEL	11/12/09	22127	AEK	GES
D-1	ALL	ADDED SHEETS 3 & 4	12/21/10	22348	AEK	GES
E-1	2 B6 2 ALL	ADDED SIGHT GAUGE ADDED SOURCE VALVE INFORMATION	10/2/12	22723	AEK	DMS
F-1	ALL	ADDED PHMI SHEETS	5/22/13	PXEC0030	AEK	GES
G-1	1 ALL	UPDATED TO PUMP WITH NEMA RATED MOTOR	8/2/16	PXEC0149	AEK	GES



NOTE:  
A 1/4 INCH VENT PLUG IS  
LOCATED IN THE FILTER HOUSING.

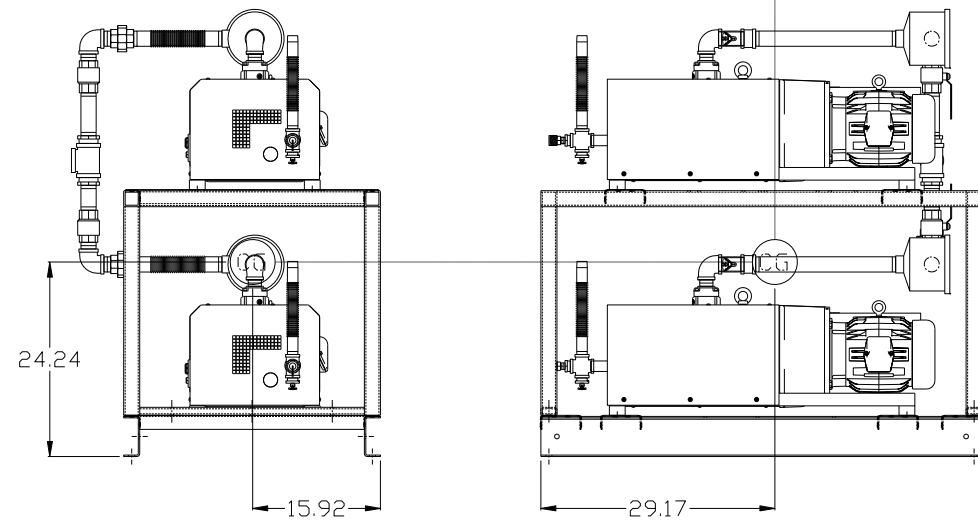
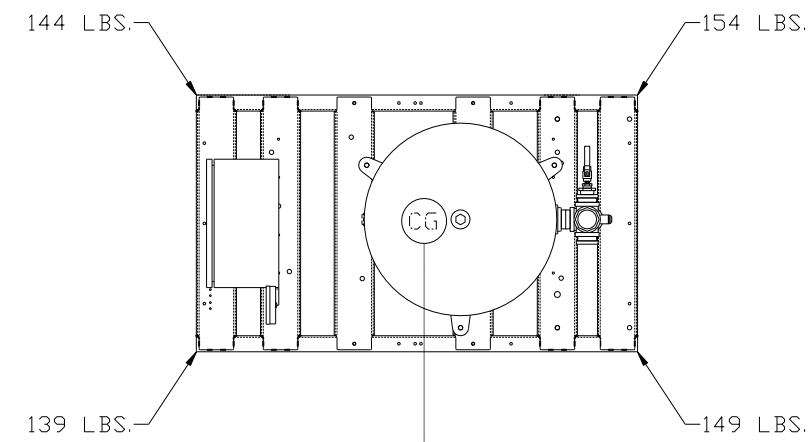
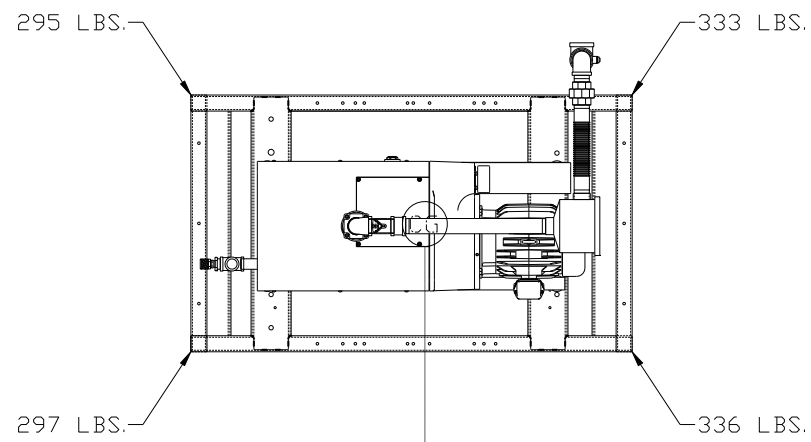
NOTES:  
1) TSH - TEMPERATURE SWITCH HIGH  
2) PER NFPA THE SYSTEM WILL REQUIRE A SOURCE VALVE (SUPPLIED BY OTHERS).

LEGEND	
	TEMP. SWITCH
	VACUUM SWITCH
	AIR FILTER
	BALL VALVE
	CHECK VALVE
	FLEX LINE
	UNION

SYMBOL LEGEND			ADDITIONAL CONTROL REQ'D	Drawings to conform to the current revision of the following ANSI standards: Y14.3 Multi and sectional view dgs. Y14.5M Dimensioning and tolerancing
	MINUS DRAFT		BRINELL HARDNESS	
TOLERANCES NOT SPECIFIED		AUTOCAD REL2008 LT		DO NOT SCALE DRAWING FOR DIMENSIONS
.XX ±	.XXX ±	INCH		SCALE 1:12
CONFIDENTIAL DISCLOSURE This drawing is the property of the CAMPBELL GROUP of the SCOTT FETZER COMPANY and subject to return on demand. Its contents are confidential and must not be copied or submitted to outside parties for use or examination.		DRAWN BY AEK	CHECKED BY GES	APPROVED BY ENGINEERING MFG/MRKTG DMS RJR
MATERIAL N/A		6/27/08	6/27/08	6/27/08
PART NAME DUPLEX CLAW VAC FLOW SCHEMATIC		DWG NO CVPD0504B		SIZE D

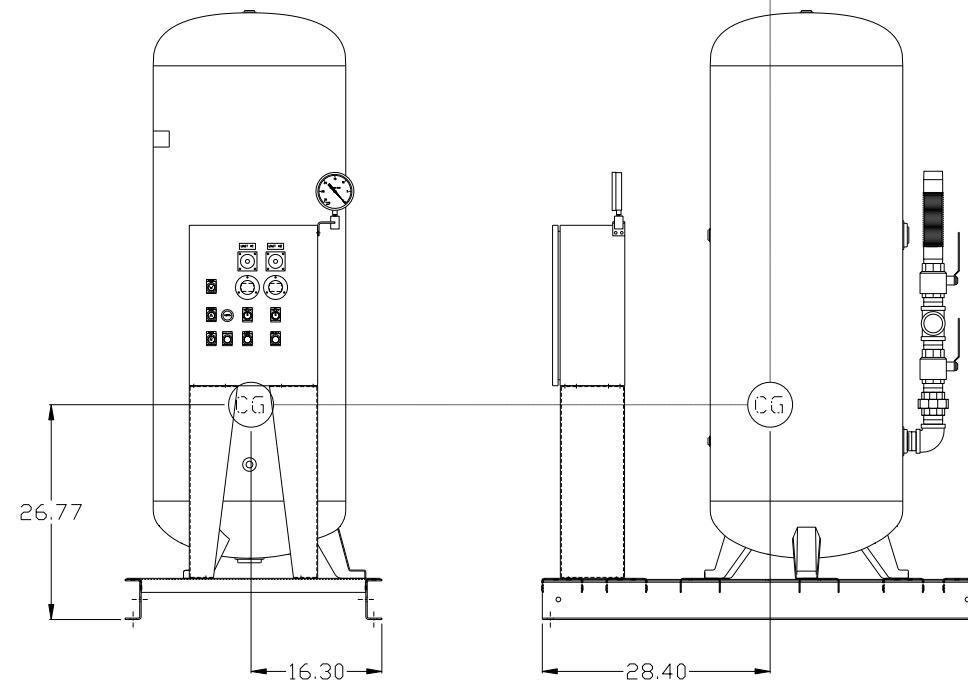


REV	ZONE	REVISION	DATE	ECN	NAME	CHKD
D-1	ALL	ADDED SHEETS 3 & 4	12/21/10	22348	AEK	KMD
E-1	2 BG 2 ALL	ADDED SIGHT GAUGE ADDED SOURCE VALVE INFORMATION	10/2/12	22723	AEK	DMS
F-1	ALL	ADDED P&ID SHEETS	5/22/13	PXEC0030	AEK	GES
G-1	1 ALL	UPDATED TO PUMP WITH NEMA RATED MOTOR	8/2/16	PXEC0149	AEK	GES



PUMP SKID:

TOTAL WEIGHT: 1261 LBS  
 C.O.G. DIMENSIONS  
 X (FRONT): -15.92"  
 Y (RIGHT): 29.17"  
 Z (HEIGHT): 24.24"



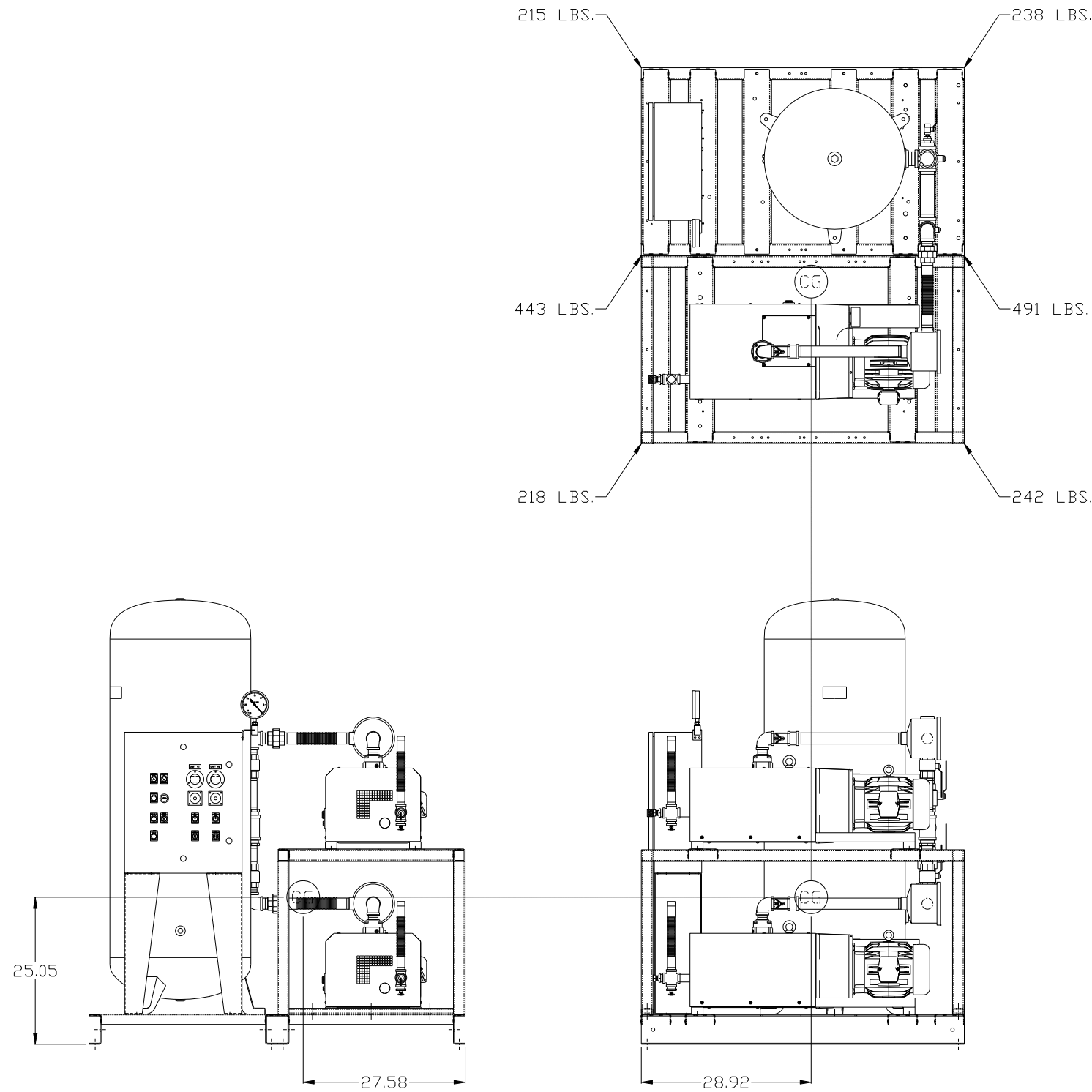
PANEL/TANK SKID:

TOTAL WEIGHT: 586 LBS  
 C.O.G. DIMENSIONS  
 X (FRONT): -16.30"  
 Y (RIGHT): 28.40"  
 Z (HEIGHT): 26.77"

⊙ denotes center of gravity

SYMBOL LEGEND		= ADDITIONAL CONTROL REQ'D		Drawings to conform to the current revision of the following ANSI standards:	
⊖ = MINUS DRAFT	⊕ = PLUS DRAFT	⊖ = MINUS DRAFT	⊕ = PLUS DRAFT	Y14.3 Multi and sectional view dgs. Y14.5M Dimensioning and tolerancing	
TOLERANCES NOT SPECIFIED		AUTOCAD REL2008 LT		DO NOT SCALE DRAWING FOR DIMENSIONS	
.XX ±	.XXX ±	INCH		Sheet 3 of 4	SCALE 1:12
CONFIDENTIAL DISCLOSURE This drawing is the property of the CAMPBELL GROUP of the SCOTT FETZER COMPANY and subject to return on demand. Its contents are confidential and must not be copied or submitted to outside parties for use or examination.		DRAWN BY AEK	CHECKED BY KMD	APPROVED BY ENGINEERING KMD	MFG/MKTG TH
MATERIAL N/A		12/21/10	12/21/10	12/21/10	12/21/10
PART NAME 5HP CLAW VAC 120 GAL DUPLEX		DWG NO CVPD0504B		SIZE D	

REV	ZONE	REVISION	DATE	ECN	NAME	CHKD
D-1	ALL	ADDED SHEETS 3 & 4	12/21/10	22348	AEK	KMD
E-1	2 BG 2 ALL	ADDED SIGHT GAUGE ADDED SOURCE VALVE INFORMATION	10/2/12	22723	AEK	DMS
F-1	ALL	ADDED P&MI SHEETS	5/22/13	PXEC0030	AEK	GES
G-1	1 ALL	UPDATED TO PUMP WITH NEMA RATED MOTOR	8/2/16	PXEC0149	AEK	GES



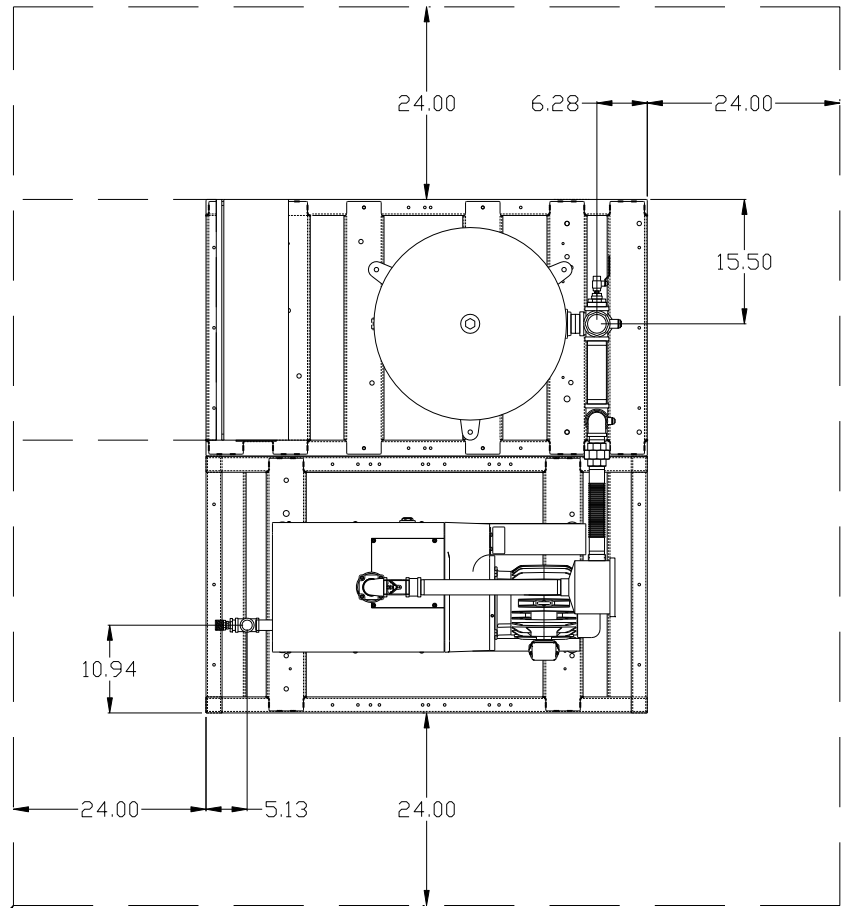
VACUUM SYSTEM:  
 TOTAL WEIGHT: 1847 LBS  
 C.O.G. DIMENSIONS  
 X (FRONT): -27.59"  
 Y (RIGHT): 28.92"  
 Z (HEIGHT): 25.05"

(CG) denotes center of gravity

<b>SYMBOL LEGEND</b> ⊖ = MINUS DRAFT ⊕ = PLUS DRAFT TOLERANCES NOT SPECIFIED .XX ± .XXX ± <DEG> ±		= ADDITIONAL CONTROL REQ'D = BRINELL HARDNESS		Drawings to conform to the current revision of the following ANSI standards: Y14.3 Multi and sectional view dgs. Y14.5M Dimensioning and tolerancing	
AUTOCAD REL2008 LT INCH		DO NOT SCALE DRAWING FOR DIMENSIONS Sheet 4 of 4 SCALE 1:12		<b>CONFIDENTIAL DISCLOSURE</b> This drawing is the property of the CAMPBELL GROUP OF THE SCOTT FETZER COMPANY and subject to return on demand. Its contents are confidential and must not be copied or submitted to outside parties for use or examination.	
DRAWN BY AEK		CHECKED BY KMD		APPROVED BY ENGINEERING MFG/MRKTG KMD TH	
MATERIAL N/A		12/21/10 12/21/10 12/21/10 12/21/10		<b>POWEREX</b> 150 PRODUCTION DRIVE, HARRISON, OHIO 45030 Ph: 888-769-7979 FAX: (513) 367-3125	
PART NAME 5HP CLAW VAC 120 GAL DUPLEX		DWG NO CVPD0504B		SIZE D	

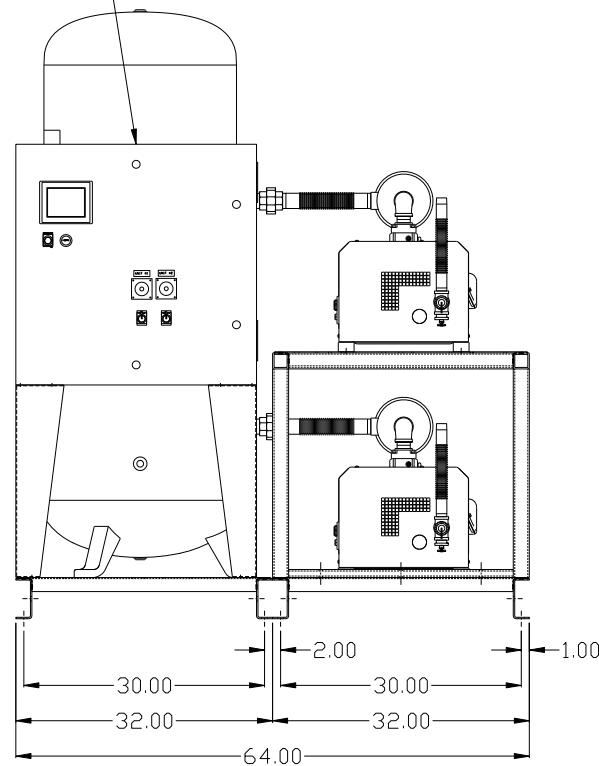
REV	ZONE	REVISION	DATE	ECN	NAME	CHKD
F-1	ALL	ADDED P&MI SHEETS	5/22/13	PXEC0030	AEK	GES
G-1	ALL	UPDATED TO PUMP WITH NEMA RATED MOTOR	8/2/16	PXEC0149	AEK	GES

MINIMUM RECOMMENDED ELECTRICAL PANEL CLEARANCE PER OSHA /NEC REQUIREMENTS

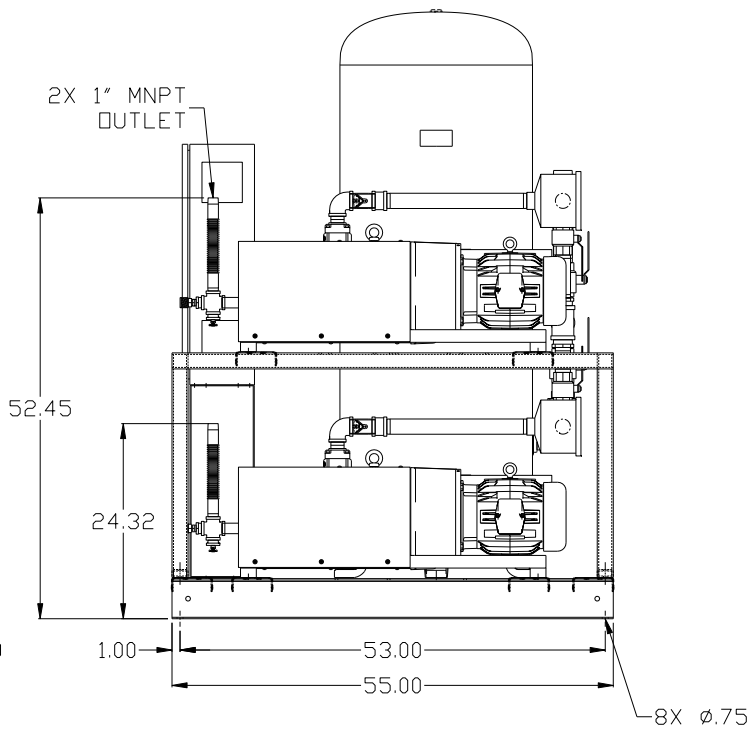


PBMI/HMI CONTROL PANEL

MINIMUM RECOMMENDED MAINTENANCE CLEARANCE

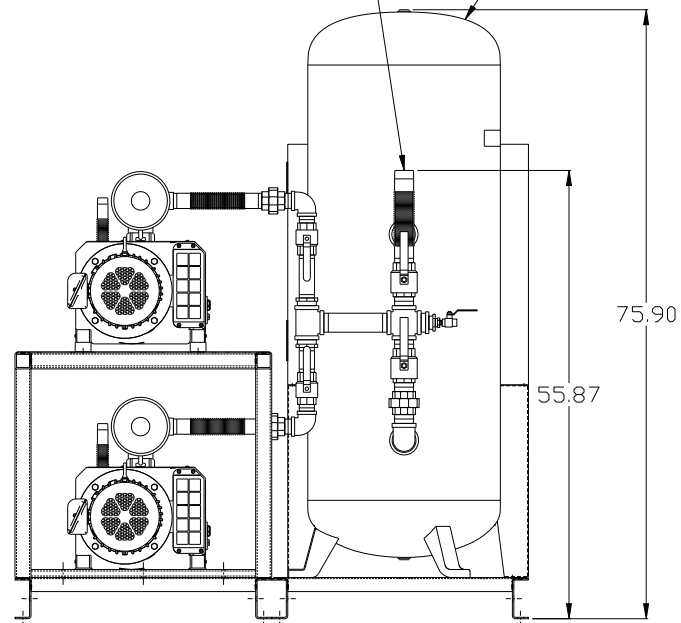


2X 1" MNPT OUTLET



2" MNPT INLET

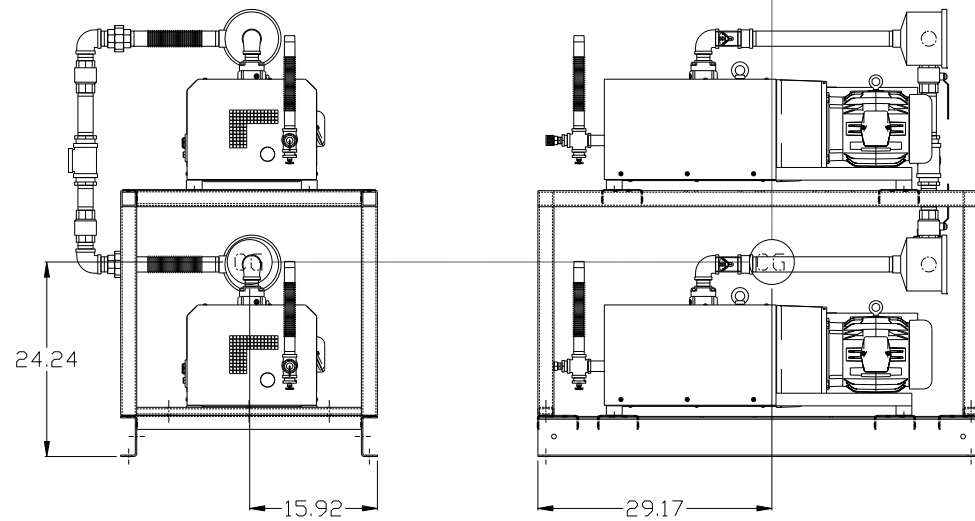
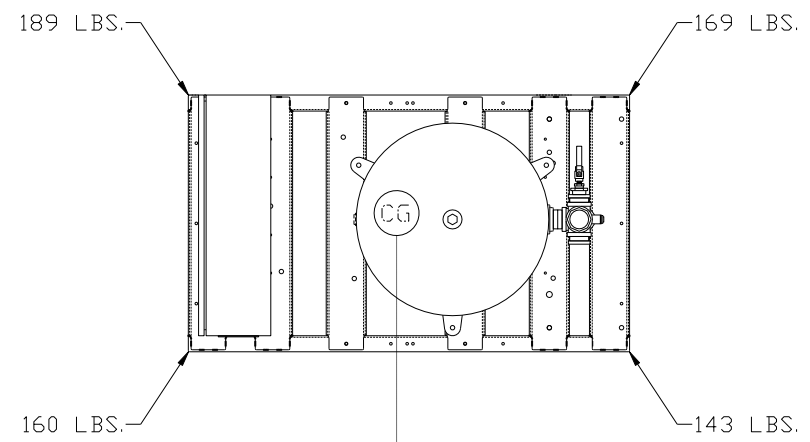
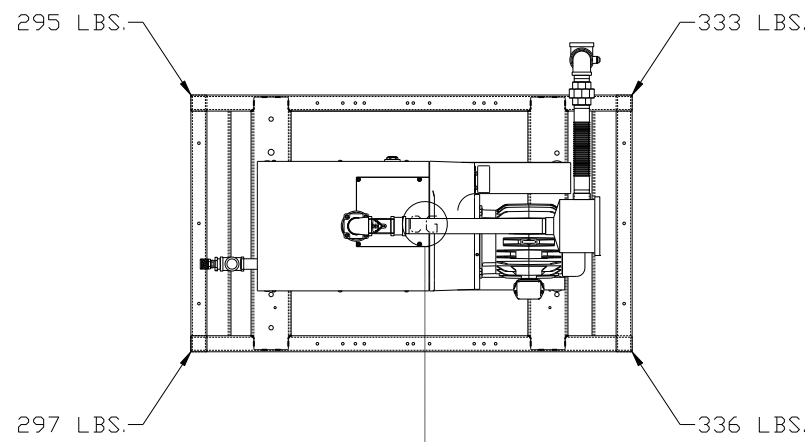
120GAL ASME RECEIVER



NOTE: SYSTEM DESIGNED IN COMPLIANCE WITH U.S. NFPA '99, LATEST EDITION.

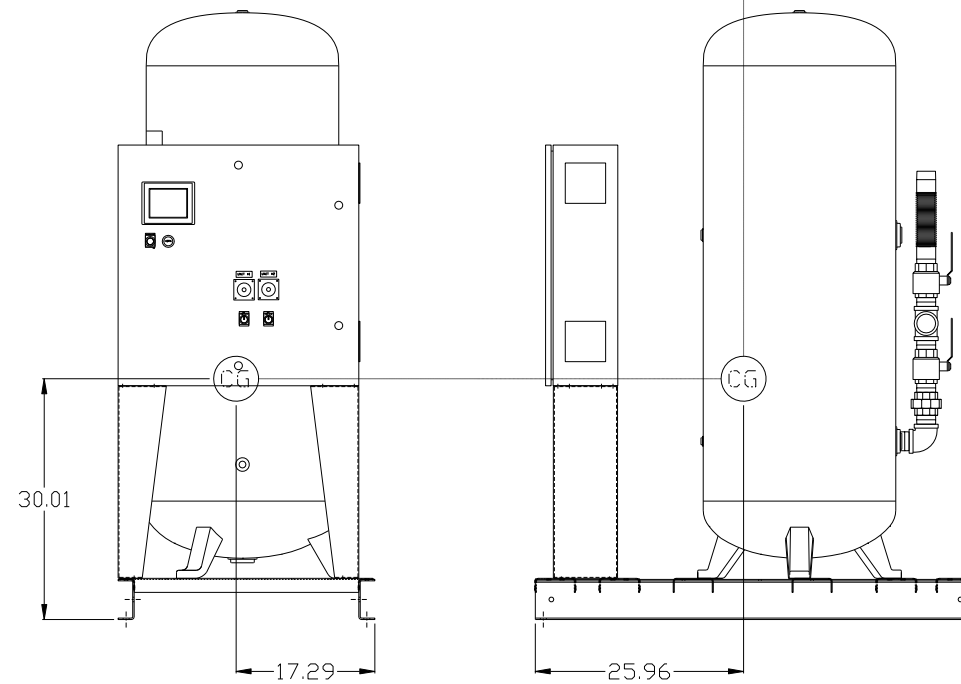
<b>SYMBOL LEGEND</b> ⊖ = MINUS DRAFT ⊕ = PLUS DRAFT Ⓢ = ADDITIONAL CONTROL REQ'D ⓈH = BRINELL HARDNESS		Drawings to conform to the current revision of the following ANSI standards: Y14.3 Multi and sectional view dgs. Y14.5M Dimensioning and tolerancing	
TOLERANCES NOT SPECIFIED .XX ± .XXX ± <math>\angle</math> (DEG) ±		AUTOCAD REL2008 LT INCH DO NOT SCALE DRAWING FOR DIMENSIONS Sheet 1 of 4 SCALE 1:12	
CONFIDENTIAL DISCLOSURE This drawing is the property of the CAMPBELL GROUP OF THE SCOTT FETZER COMPANY and subject to return on demand. Its contents are confidential and must not be copied or submitted to outside parties for use or examination.			
DRAWN BY AEK		CHECKED BY GES	
APPROVED BY DMS		ENGINEERING MFG/MKTG RJR	
MATERIAL N/A		DATE 5/22/13	
PART NAME 5HP CLAW VAC 120 GAL DUPLEX		DATE 5/22/13 DATE 5/22/13 DATE 5/22/13 DATE 5/22/13	
DWG NO CVPD0504B		SIZE D	

REV	ZONE	REVISION	DATE	ECN	NAME	CHKD
F-1	ALL	ADDED P&MI SHEETS	5/22/13	PXEC0030	AEK	GES
G-1	ALL	UPDATED TO PUMP WITH NEMA RATED MOTOR	8/2/16	PXEC0149	AEK	GES



PUMP SKID:

TOTAL WEIGHT: 1261 LBS  
C.O.G. DIMENSIONS  
X (FRONT): -15.92"  
Y (RIGHT): 29.17"  
Z (HEIGHT): 24.24"



PANEL/TANK SKID:

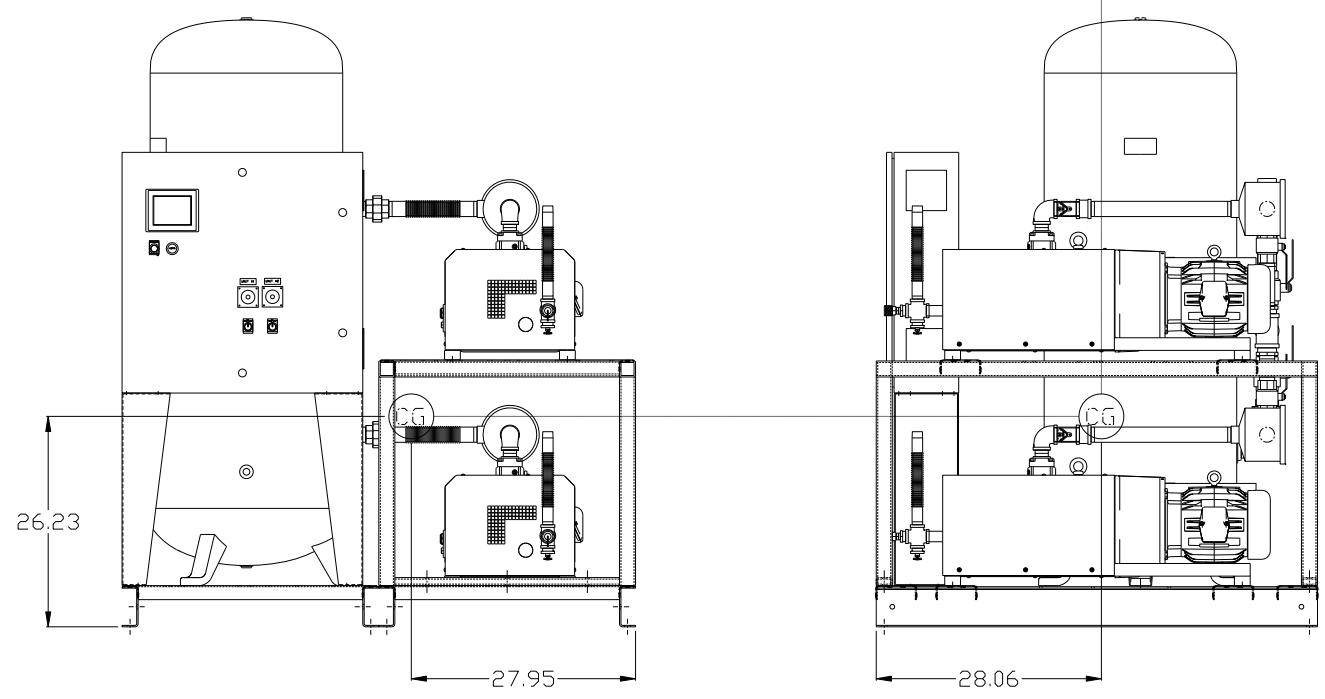
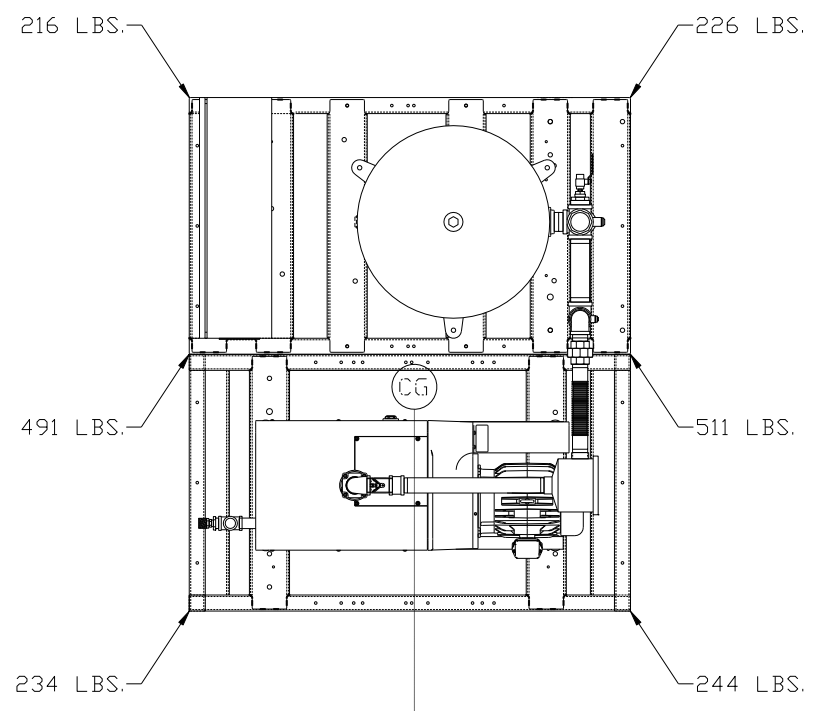
TOTAL WEIGHT: 661 LBS  
C.O.G. DIMENSIONS  
X (FRONT): -17.29"  
Y (RIGHT): 25.96"  
Z (HEIGHT): 30.01"

⊙ denotes center of gravity

SYMBOL LEGEND		= ADDITIONAL CONTROL REQ'D		Drawings to conform to the current revision of the following ANSI standards:	
⊖	= MINUS DRAFT	⊕	= PLUS DRAFT	⊙	= BRINELL HARDNESS
TOLERANCES NOT SPECIFIED		AUTOCAD REL2008 LT		DO NOT SCALE DRAWING FOR DIMENSIONS	
.XX ±	.XXX ±	INCH		Sheet 3 of 4	SCALE 1:12
CONFIDENTIAL DISCLOSURE This drawing is the property of the CAMPBELL GROUP of the SCOTT FETZER COMPANY and subject to return on demand. Its contents are confidential and must not be copied or submitted to outside parties for use or examination.		DRAWN BY AEK	CHECKED BY GES	APPROVED BY ENGINEERING DMS	MFG/MKTG RJR
MATERIAL N/A		5/22/13	5/22/13	5/22/13	5/22/13
PART NAME 5HP CLAW VAC 120 GAL DUPLEX		DWG NO CVPD0504B		SIZE D	

8 7 6 5 4 3 2 1

REV	ZONE	REVISION	DATE	ECN	NAME	CHKD
F-1	ALL	ADDED PXMI SHEETS	5/22/13	PXEC0030	AEK	GES
G-1	ALL	UPDATED TO PUMP WITH NEMA RATED MOTOR	8/2/16	PXEC0149	AEK	GES



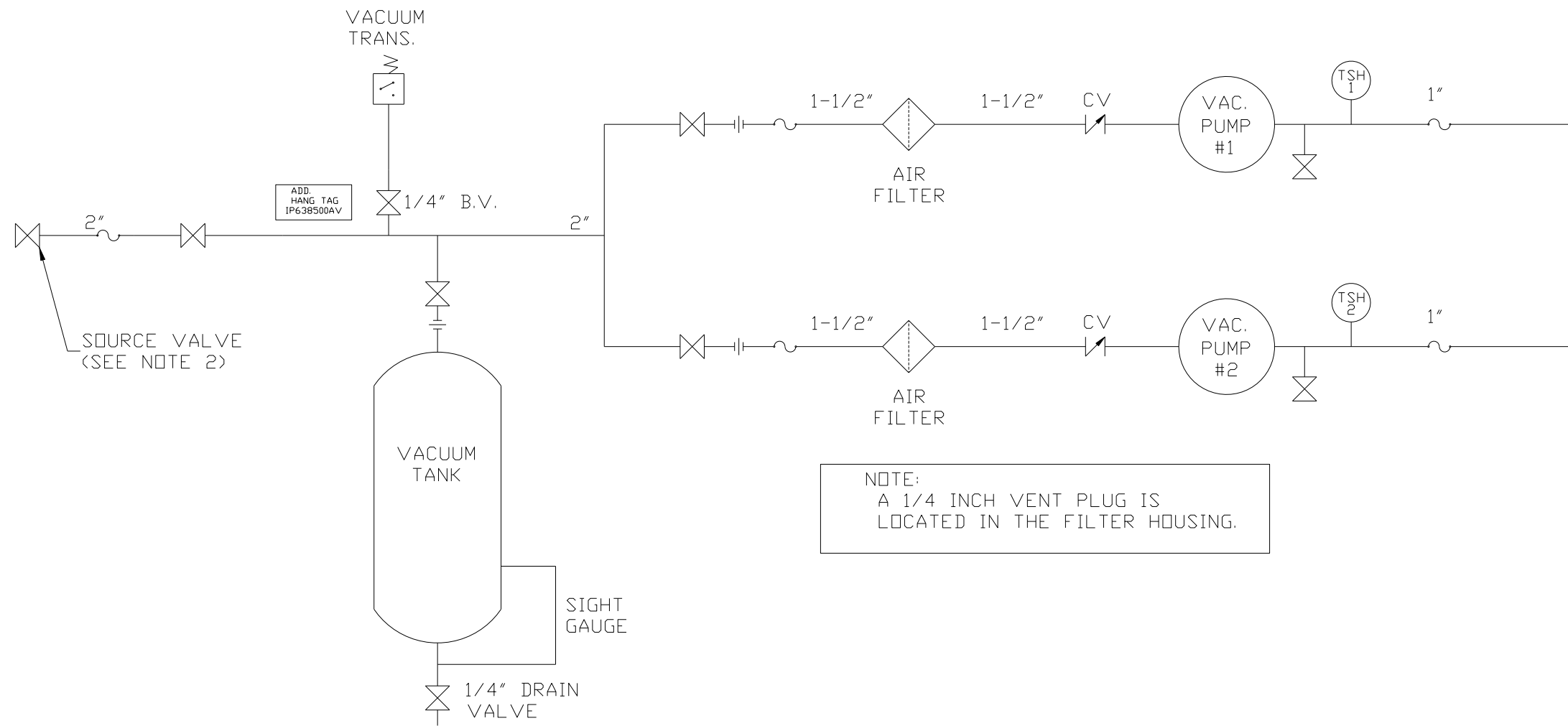
VACUUM SYSTEM:  
 TOTAL WEIGHT: 1922 LBS  
 C.O.G. DIMENSIONS  
 X (FRONT): -27.95"  
 Y (RIGHT): 28.06"  
 Z (HEIGHT): 26.23"

(CG) denotes center of gravity

<b>SYMBOL LEGEND</b> ⊖ = MINUS DRAFT ⊕ = PLUS DRAFT ∅ = ADDITIONAL CONTROL REQ'D HRC = BRINELL HARDNESS		Drawings to conform to the current revision of the following ANSI standards: Y14.3 Multi and sectional view dgs. Y14.5M Dimensioning and tolerancing	
TOLERANCES NOT SPECIFIED .XX ± .XXX ± <<DEG> ±		AUTOCAD REL2008 LT INCH DO NOT SCALE DRAWING FOR DIMENSIONS Sheet 4 of 4 SCALE 1:12	
CONFIDENTIAL DISCLOSURE This drawing is the property of the CAMPBELL GROUP OF THE SCOTT FETZER COMPANY and subject to return on demand. Its contents are confidential and must not be copied or submitted to outside parties for use or examination.			
DRAWN BY AEK		CHECKED BY GES	
APPROVED BY DMS		ENGINEERING MFG/MRKTG RJR	
DATE 5/22/13		DATE 5/22/13	
DATE 5/22/13		DATE 5/22/13	
MATERIAL N/A		<b>POWEREX</b> 150 PRODUCTION DRIVE, HARRISON, OHIO 45030 Ph: 888-769-7979 FAX: (513) 367-3125	
PART NAME 5HP CLAW VAC 120 GAL DUPLEX		DWG NO CVPD0504B SIZE D	

8 7 6 5 4 3 2 1

REV	ZONE	REVISION	DATE	ECN	NAME	CHKD
F-1	ALL	ADDED PXMI SHEETS	5/22/13	PXEC0030	AEK	GES
G-1	ALL	UPDATED TO PUMP WITH NEMA RATED MOTOR	8/2/16	PXEC0149	AEK	GES



NOTE:  
A 1/4 INCH VENT PLUG IS  
LOCATED IN THE FILTER HOUSING.

NOTES:  
1) TSH - TEMPERATURE SWITCH HIGH  
2) PER NFPA THE SYSTEM WILL REQUIRE A SOURCE VALVE (SUPPLIED BY OTHERS).

LEGEND	
	TEMP. SWITCH
	AIR FILTER
	BALL VALVE
	VACUUM SWITCH
	CHECK VALVE
	FLEX LINE
	UNION

<b>SYMBOL LEGEND</b> = MINUS DRAFT = PLUS DRAFT = ADDITIONAL CONTROL REQ'D = BRINELL HARDNESS		Drawings to conform to the current revision of the following ANSI standards: Y14.3 Multi and sectional view dsgs. Y14.5M Dimensioning and tolerancing	
TOLERANCES NOT SPECIFIED .XX ± .XXX ± <math>\angle</math> (DEG) ±		AUTOCAD REL2008 LT <b>INCH</b> DO NOT SCALE DRAWING FOR DIMENSIONS Sheet 2 of 4 SCALE 1:12	
<b>CONFIDENTIAL DISCLOSURE</b> This drawing is the property of the CAMPBELL GROUP of the SCOTT FETZER COMPANY and subject to return on demand. Its contents are confidential and must not be copied or submitted to outside parties for use or examination.			
DRAWN BY AEK		CHECKED BY GES	
5/22/13		APPROVED BY DMS RJR 5/22/13 5/22/13	
MATERIAL N/A			
PART NAME DUPLEX CLAW VAC FLOW SCHEMATIC		 150 PRODUCTION DRIVE, HARRISON, OHIO 45030 Ph: 888-769-7979 FAX: (513) 367-3125	
DWG NO CVPD0504B		SIZE D	