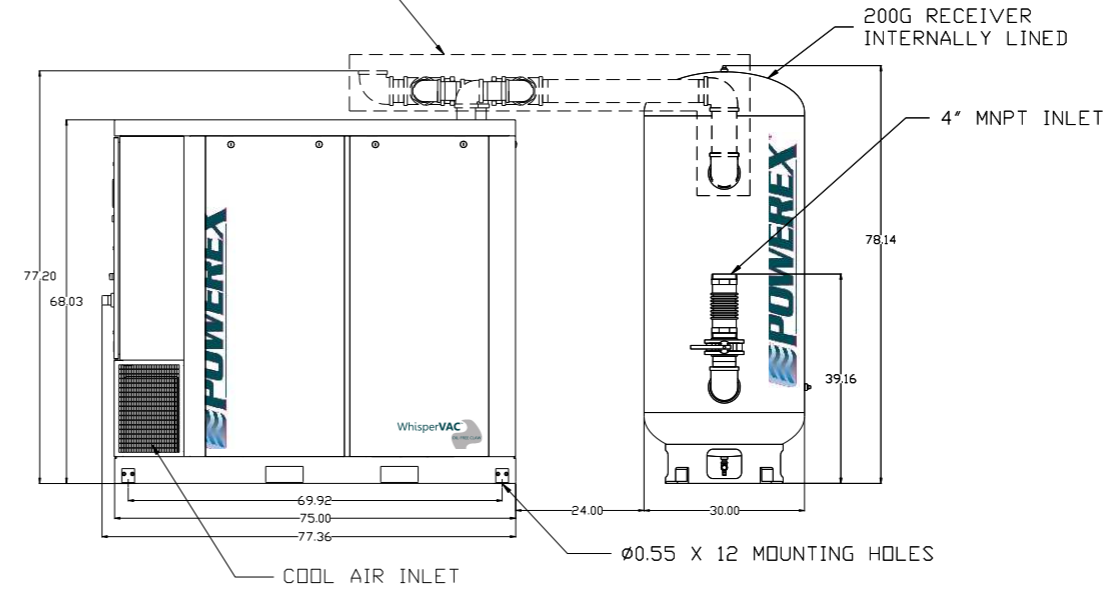
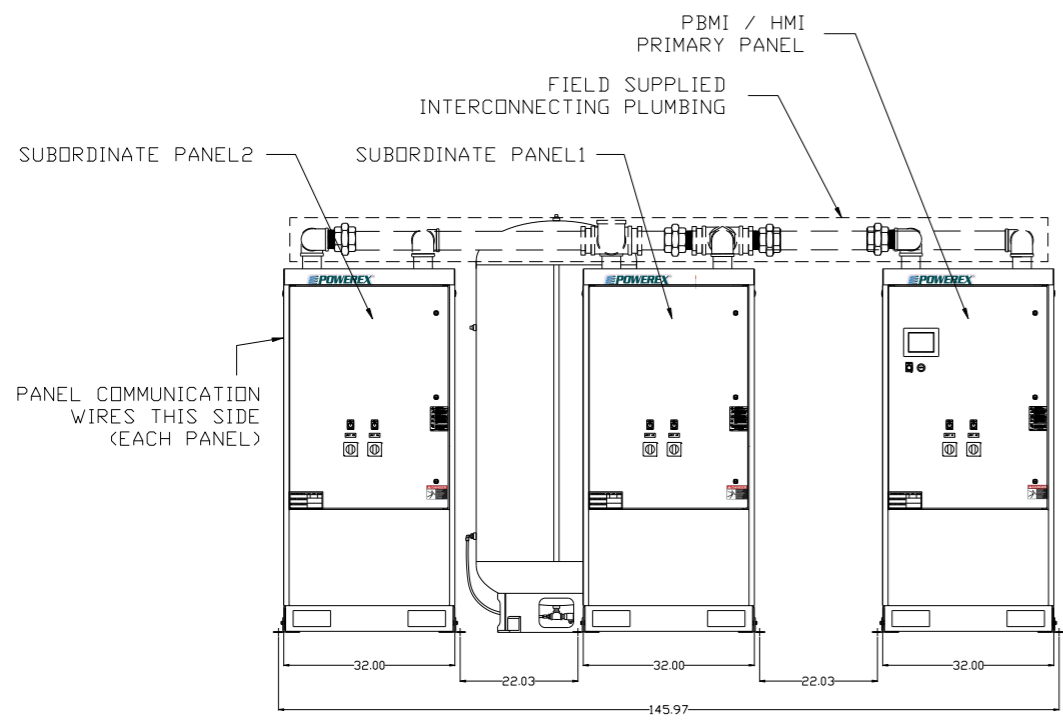
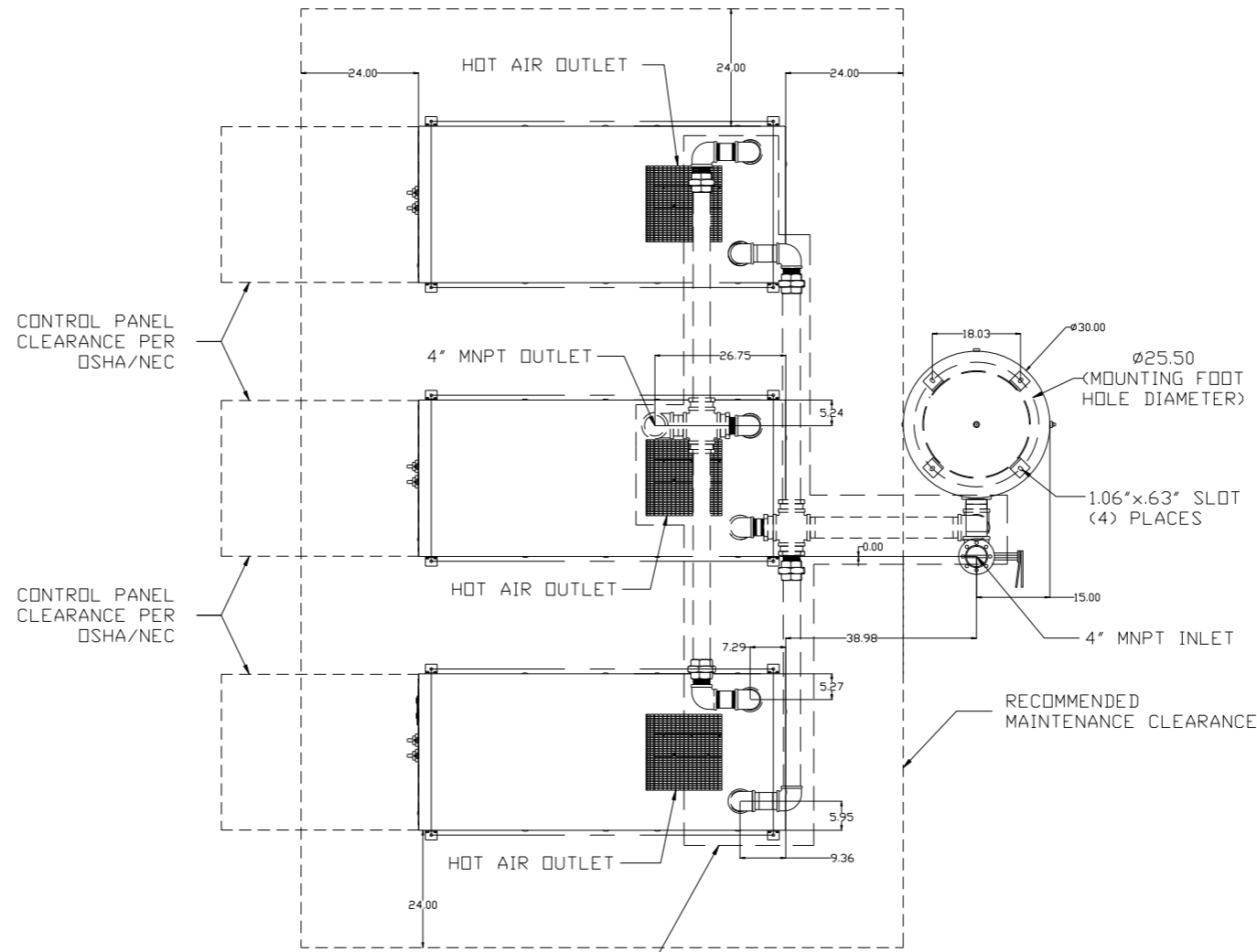
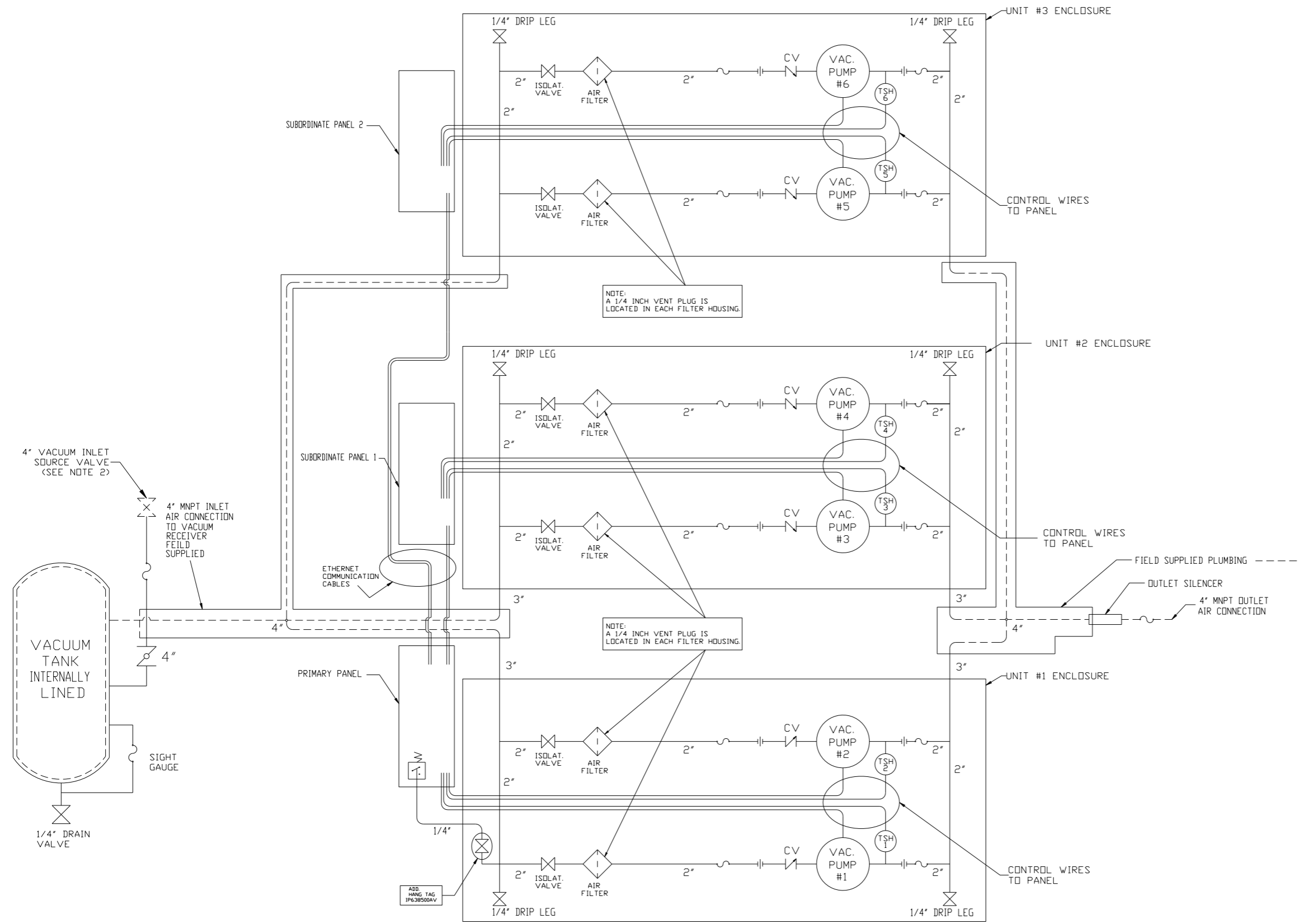


REV	ZONE	REVISION	DATE	ECN	NAME	CHKD
B-1	ALL	RELEASE TO PRODUCTION	6/29/17	PKE0099	GES	KMD



SYMBOL LEGEND		ADDITIONAL CONTROL REQ'D		Drawings to conform to the current revision of the following ANSI standards:	
⊖	MINUS DRAFT	⊕	PLUS DRAFT	⊖	ANSI standards
⊕	PLUS DRAFT	⊖	MINUS DRAFT	⊕	ANSI standards
TOLERANCES NOT SPECIFIED		AUTOCAD REL2014 LT		DO NOT SCALE DRAWING FOR DIMENSIONS	
.XX	±	INCH		Sheet 1 of 2	
.XXX	±			SCALE 1:18	
\angle	DEG				
CONFIDENTIAL DISCLOSURE: This drawing is the property of POWEREX, INC. of the SCOTT FETZER COMPANY and subject to return on demand. Its contents are confidential and must not be copied or submitted to outside parties for use or examination.					
DRAWN BY		CHECKED BY		APPROVED BY	
GES		KMD		GES CT	
6/29/17		6/29/17		6/29/17 6/29/17	
MATERIAL		N/A			
PART NAME		LAB CLAW ENCLOSED		150 PRODUCTION DRIVE, HARRISON, OHIO 45030 Ph: 888-769-7979 FAX: (513) 367-3125	
HEXAPLEX 7.5HP 200GV		DWG NO		SIZE	
		LCEH0755		D	

REV	ZONE	REVISION	DATE	ECN	NAME	CHKD
B-1	ALL	RELEASE TO PRODUCTION	6/29/17	PXC0099	GES	KMD



NOTE:
A 1/4 INCH VENT PLUG IS
LOCATED IN EACH FILTER HOUSING.

NOTE:
A 1/4 INCH VENT PLUG IS
LOCATED IN EACH FILTER HOUSING.

- NOTES:
- 1) TSH - TEMPERATURE SWITCH HIGH
 - 2) PER NFPA THE SYSTEM WILL REQUIRE A SOURCE VALVE (SUPPLIED BY OTHERS).
 - 3) FIELD SUPPLIED PLUMBING IS INDICATED BY HIDDEN LINES. - - - - -

LEGEND

(TSH)	TEMP. SWITCH	(Symbol)	VACUUM TRANSDUCER
(Diamond)	AIR FILTER	(Symbol)	CHECK VALVE
(X)	BALL VALVE	(Symbol)	FLEX LINE
(Symbol)	BUTTERFLY BALL VALVE	(Symbol)	UNION

SYMBOL LEGEND		ADDITIONAL CONTROL REQ'D		Drawings to conform to the current revision of the following ANSI standards:	
⊖	MINUS DRAFT	(Symbol)	REQ'D	Y14.3	Multi and sectional view dgs.
⊕	PLUS DRAFT	(Symbol)	BRINELL HARDNESS	Y14.5M	Dimensioning and tolerancing
TOLERANCES NOT SPECIFIED		AUTOCAD REL2014LT		DO NOT SCALE DRAWING FOR DIMENSIONS	
.XX ±		INCH		Sheet 2 of 2	SCALE 1:18
.XXX ±					
<2 DEG. ±					
CONFIDENTIAL DISCLOSURE					
This drawing is the property of POWEREX, INC. of the SCOTT FETZER COMPANY and subject to return on demand. Its contents are confidential and must not be copied or submitted to outside parties for use or examination.					
DRAWN BY		CHECKED BY		APPROVED BY	
GES		KMD		GES CT	
6/29/17		6/29/17		6/29/17 6/29/17	
MATERIAL		N/A		POWEREX	
PART NAME		LAB CLAW ENCLOSED		150 PRODUCTION DRIVE, HARRISON, OHIO 45030	
		HEXAPLEX VACUUM		Ph: 888-769-7979 FAX: (513) 367-3125	
DWG NO		LCEH0755		SIZE	
				D	