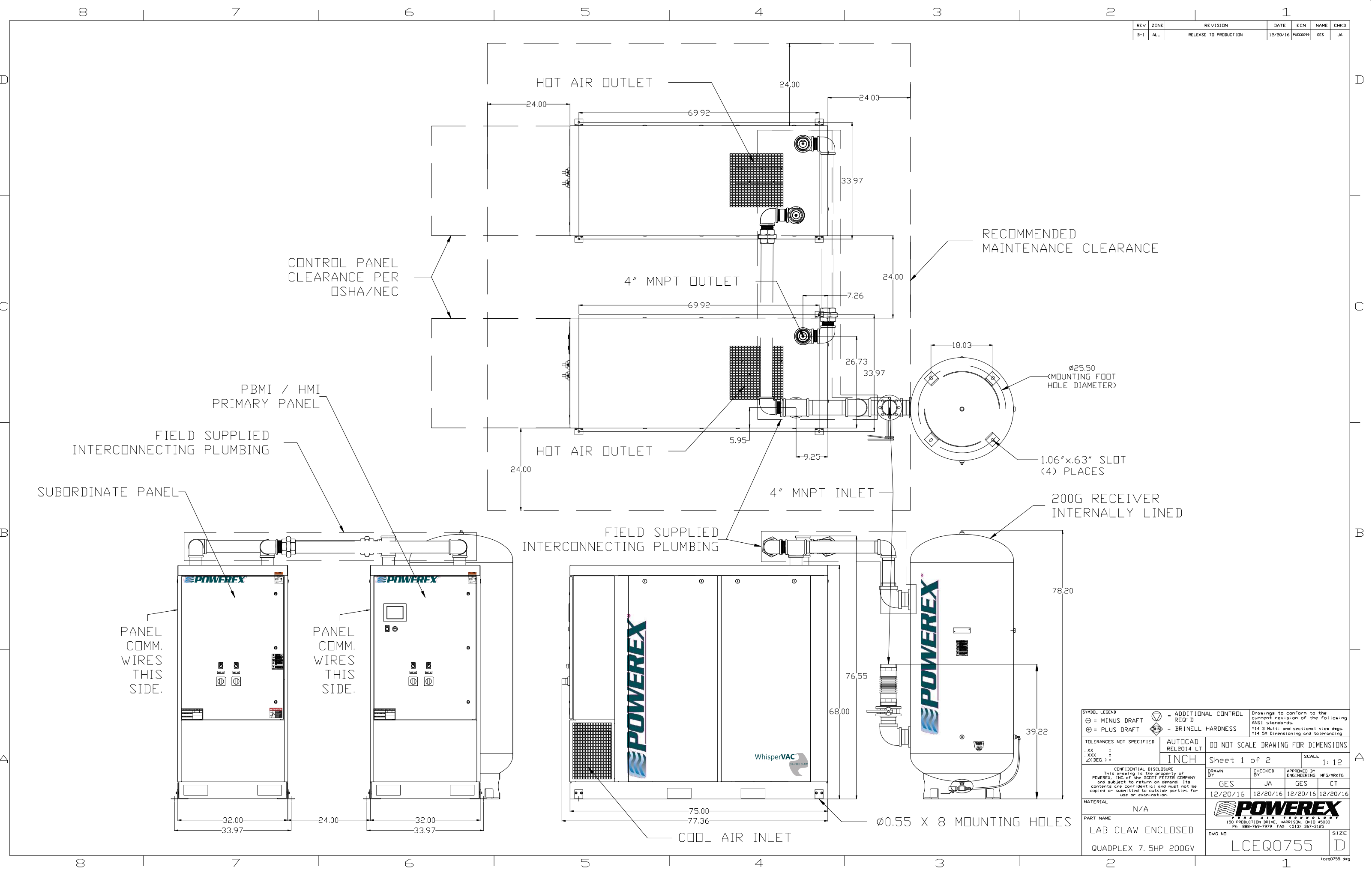


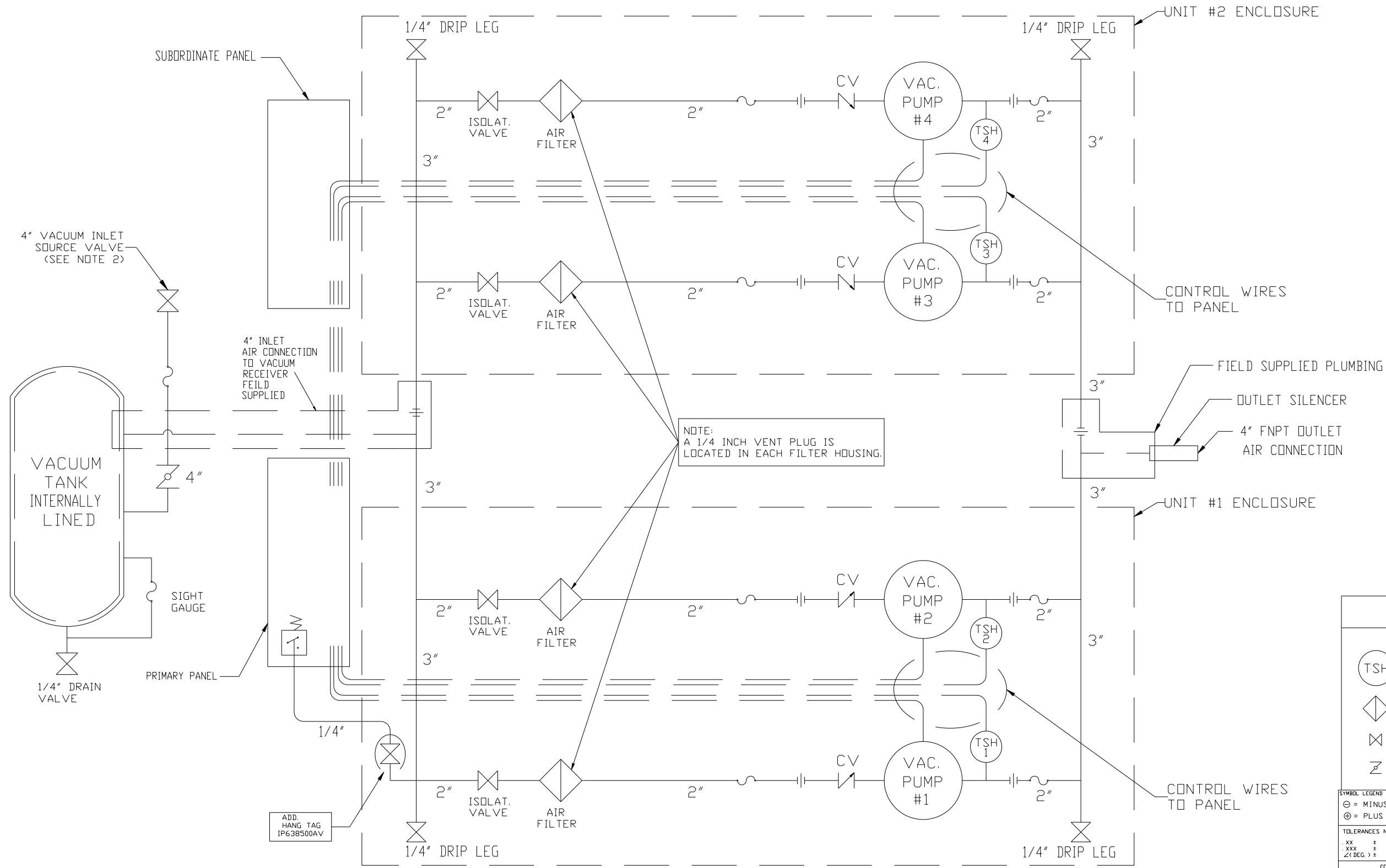
REV	ZONE	REVISION	DATE	ECN	NAME	CHKD
B-1	ALL	RELEASE TO PRODUCTION	12/20/16	PKC0099	GES	JA



SYMBOL LEGEND ⊖ = MINUS DRAFT ⊕ = PLUS DRAFT \angle (DEG) ±		= ADDITIONAL CONTROL REQ'D = BRINELL HARDNESS		Drawings to conform to the current revision of the following ANSI standards: Y14.3 Multi and sectional view dgs. Y14.5M Dimensioning and tolerancing
TOLERANCES NOT SPECIFIED .XX ± .XXX ± \angle (DEG) ±		AUTOCAD REL2014 LT INCH	DO NOT SCALE DRAWING FOR DIMENSIONS Sheet 1 of 2 SCALE 1:12	
CONFIDENTIAL DISCLOSURE This drawing is the property of POWEREX, INC. of the SCOTT FETZER COMPANY and subject to return on demand. Its contents are confidential and must not be copied or submitted to outside parties for use or examination.				
DRAWN BY GES		CHECKED BY JA		APPROVED BY ENGINEERING MFG/MKTG GES CT
MATERIAL N/A		DATE 12/20/16		DATE 12/20/16
PART NAME LAB CLAW ENCLOSED QUADPLEX 7.5HP 200GV		 150 PRODUCTION DRIVE, HARRISBURG, OHIO 45030 Ph: 888-769-7979 FAX: (513) 367-3125		DWG NO LCEQ0755 SIZE D

lceq0755.dwg

REV	ZONE	REVISION	DATE	ECN	NAME	CHKD
B-1	ALL	RELEASE TO PRODUCTION	12/20/16	PHC0099	GES	JA



NOTE:
A 1/4 INCH VENT PLUG IS
LOCATED IN EACH FILTER HOUSING.

- NOTES:
1) TSH - TEMPERATURE SWITCH HIGH
2) PER NFPA THE SYSTEM WILL REQUIRE A SOURCE VALVE (SUPPLIED BY OTHERS).

LEGEND	
(TSH) TEMP. SWITCH	VACUUM TRANSDUCER
AIR FILTER	CHECK VALVE
BALL VALVE	FLEX LINE
BUTTERFLY VALVE	UNION

SYMBOL LEGEND: ⊖ = MINUS DRAFT, ⊕ = PLUS DRAFT, ⊕ = ADDITIONAL CONTROL REQ'D, ⊕ = BRINELL HARDNESS

TOLERANCES NOT SPECIFIED: .XX ±, .XXX ±, Z<DEG.> ±

CONFIDENTIAL DISCLOSURE: This drawing is the property of POWEREX, INC. of the SCOTT FETZER COMPANY and subject to return on demand. Its contents are confidential and must not be copied or submitted to outside parties for use or examination.

MATERIAL: N/A		PART NAME: LAB CLAW ENCLOSED	
DRAWN BY: GES		CHECKED BY: JA	
APPROVED BY: MFG/MRKTG		DATE: 12/20/16	
DATE: 12/20/16		DATE: 12/20/16	
DATE: 12/20/16		DATE: 12/20/16	
DATE: 12/20/16		DATE: 12/20/16	
DATE: 12/20/16		DATE: 12/20/16	
DATE: 12/20/16		DATE: 12/20/16	
DATE: 12/20/16		DATE: 12/20/16	
DATE: 12/20/16		DATE: 12/20/16	

POWEREX 150 PRODUCTION DRIVE, HARRISON, OHIO 43030 Ph: 888-769-7979 FAX: (513) 367-3125

DWG NO: LCEQ0755 SIZE: D