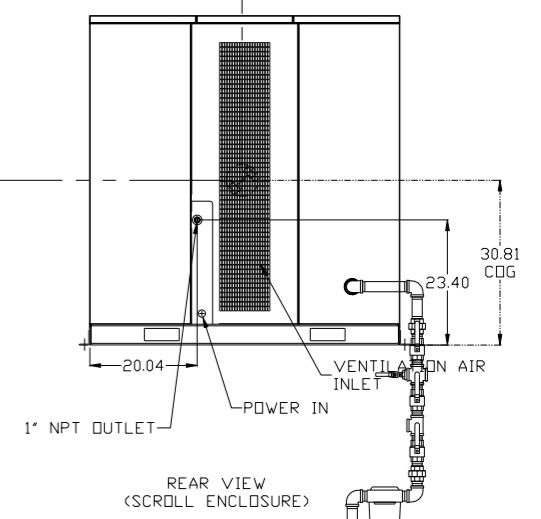
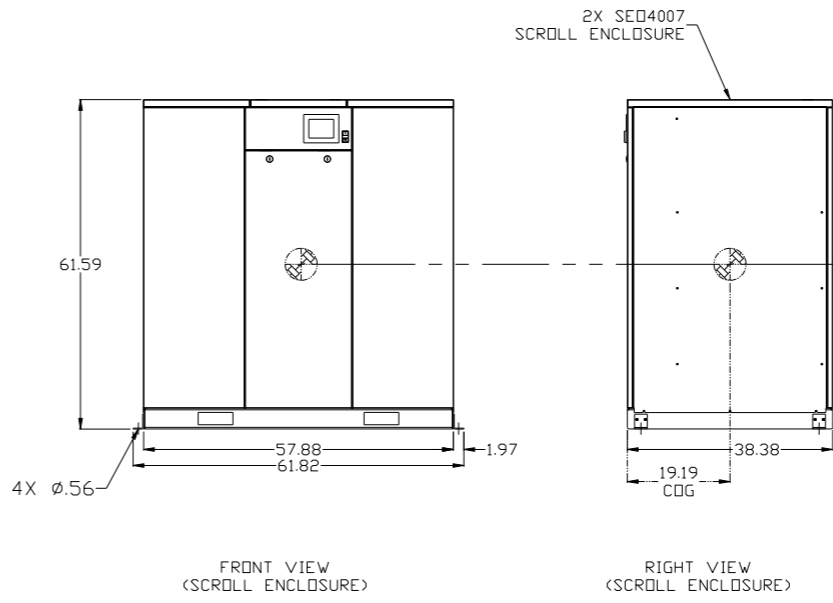
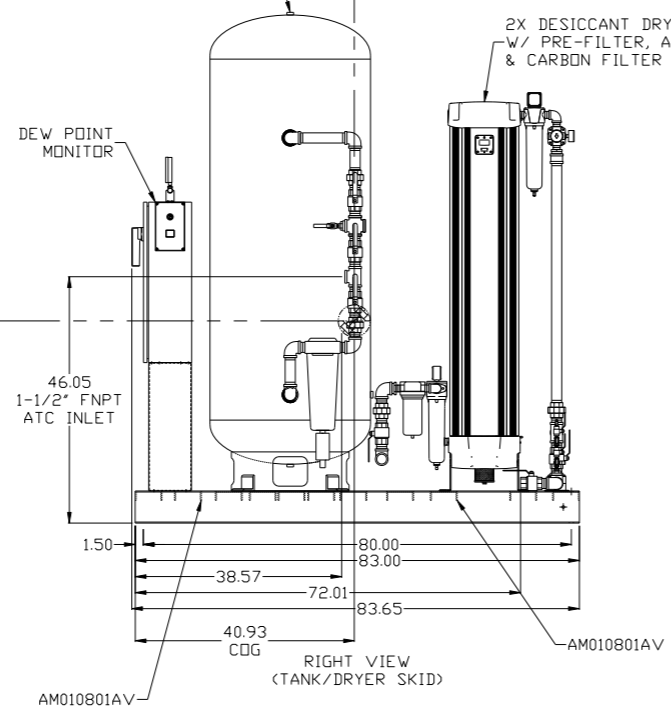
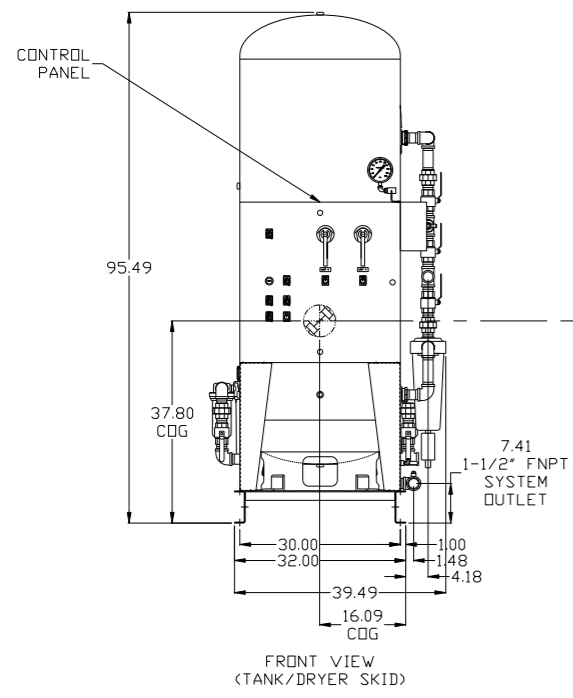
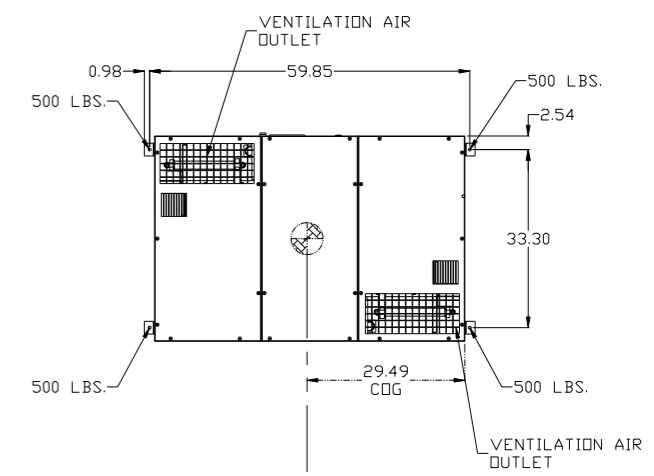
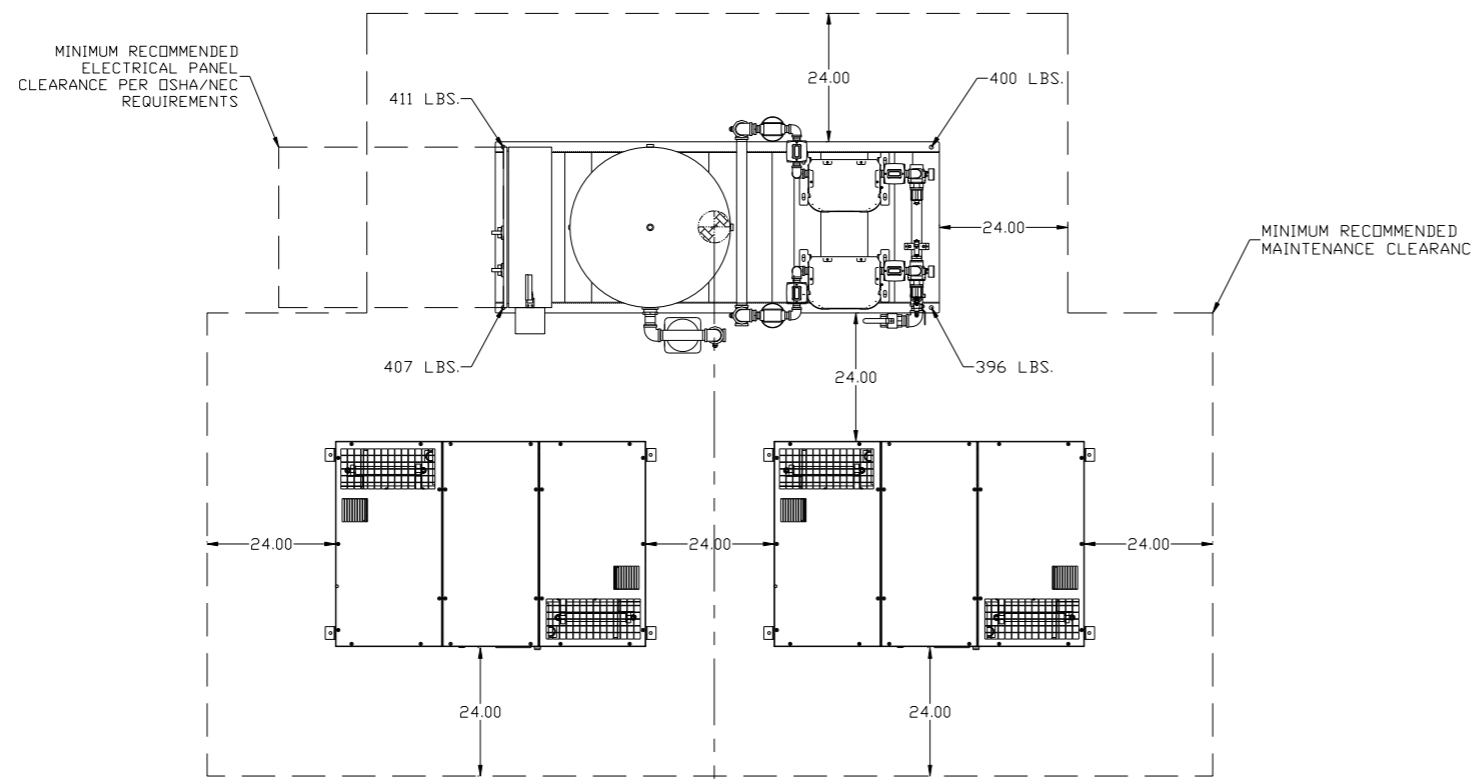


REV	ZONE	REVISION	DATE	ECN	NAME	CHKD
A-1	ALL	RELEASE TO PRODUCTION	4/23/13	PXEC0038	RK	AEK
B-1	2 ALL 2 D-5 1 ALL	ADDED/UPDATED FLEX LINES ON FLOW ADDED MAIN PANEL PRESSURE SWITCHES CORRECTED DIMENSIONS AND MAINTENANCE CLEARANCE	1/2/15	PXEC0093	AEK	KMB
C-1	1 ALL	ADDED CENTER OF GRAVITY INFORMATION	1/20/16	PXEC0137	AEK	GES
D-1	1 ALL	UPDATED TO NANO DRYERS	9/8/17	PXEC0174	AEK	GES
E-1	1 ALL	UPDATED SKID/FILTER, ADDED BRACKETS	2/8/18	PXEC0229	MAH	GES
F-1	4B	UPDATED FLOW FROM 3/4" TO 1 1/2"	4/12/18	PXEC0229	MAH	GES



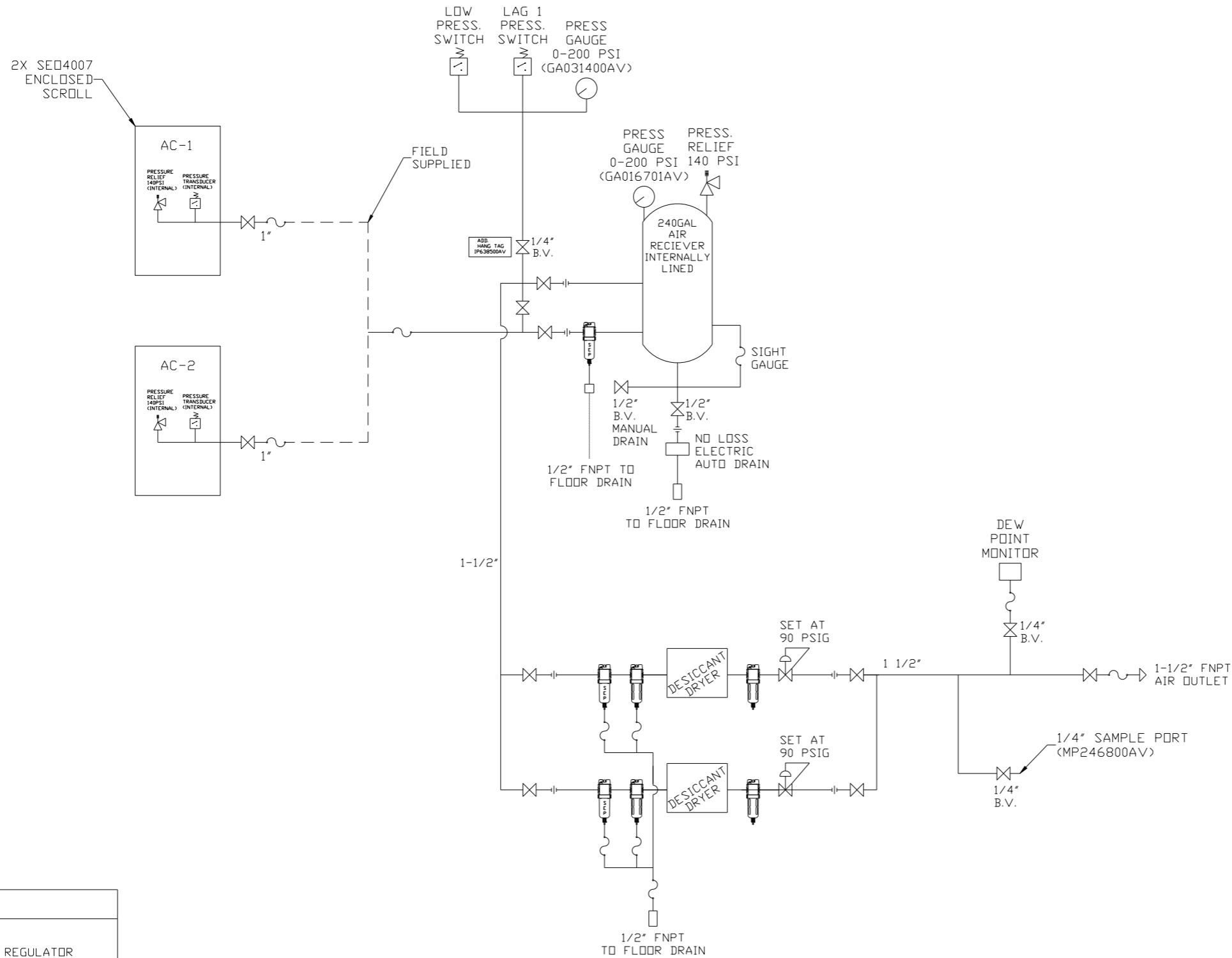
ATC/CONTROL SKID:  
TOTAL WEIGHT: 1614 LBS  
C.O.G. DIMENSIONS  
X (FRONT): -16.10"  
Y (RIGHT): 40.93"  
Z (HEIGHT): 37.80"

SEQ4007 SCROLL ENCLOSURE:  
TOTAL WEIGHT: 2000 LBS  
C.O.G. DIMENSIONS  
X (FRONT): -29.49"  
Y (RIGHT): 19.19"  
Z (HEIGHT): 30.81"

- NOTES:
- 1.) SHEET 1, UNIT LAYOUT.
  - 2.) SHEET 2, UNIT FLOW SCHEMATIC.
  - 3.) OUTLET CONNECTION: 1-1/2" FNPT X 1-1/2".
  - 4.) POWER CONNECTION: 1- 208, 230, OR 460 VOLT.
  - 5.) WHEN PACKAGE IS INSTALLED INTO THE FACILITY, MAKE SURE THAT THE INSTALLER REFERENCES TABLE 110.26 (A) (1) FOR MINIMUM WORKING AREA.

SYMBOL LEGEND		= MINUS DRAFT		= PLUS DRAFT		= ADDITIONAL CONTROL REQ'D		= BRINELL HARDNESS		Drawings to conform to the current revision of the following ANSI standards: Y14.3 Multi- and sectional view dsgs. Y14.5M Dimensioning and tolerancing	
TOLERANCES NOT SPECIFIED		.XX ±		.XXX ±		<<DEG> ±		AUTOCAD REL2008 LT		DO NOT SCALE DRAWING FOR DIMENSIONS	
INCH		Sheet 1 of 2		SCALE		1:18		CONFIDENTIAL DISCLOSURE		This drawing is the property of the POWEREX, INC. of the SCOTT TETZER COMPANY and subject to return on demand. Its contents are confidential and must not be copied or submitted to outside parties for use or examination.	
DRAWN BY		CHECKED BY		APPROVED BY		ENGINEERING		MFG/MKTG		DATE	
RK		AEK		JA		CT		4/23/13		4/23/13 4/23/13 4/23/13	
MATERIAL		N/A		PART NAME		60HP ENCLOSE SCROLL		240GAL DUAL DESICCANT LAB PACKAGE		DRAWING NO.	
LSED4006		SIZE		D		nset400.dwg					

REV	ZONE	REVISION	DATE	ECN	NAME	CHKD
A-1	ALL	RELEASE TO PRODUCTION	4/23/13	PXEC0038	RK	AEK
B-1	2 ALL 2 D-5 1 ALL	ADDED/UPDATED FLEX LINES ON FLOW CORRECTED MAIN PANEL PRESSURE SWITCHES CORRECTED DIMENSIONS AND MAINTENANCE CLEARANCE	1/2/15	PXEC0093	AEK	KMB
C-1	1 ALL	ADDED CENTER OF GRAVITY INFORMATION	1/20/16	PXEC0137	AEK	GES
D-1	1 ALL	UPDATED TO HAND DRYERS	9/8/17	PXEC0174	AEK	GES
E-1	1 ALL	UPDATED SKID/FILTER, ADDED BRACKETS	2/8/18	PXEC0229	MAH	GES
F-1	4B	UPDATED FLOW FROM 3/4" TO 1 1/2"	4/12/18	PXEC0229	MAH	GES

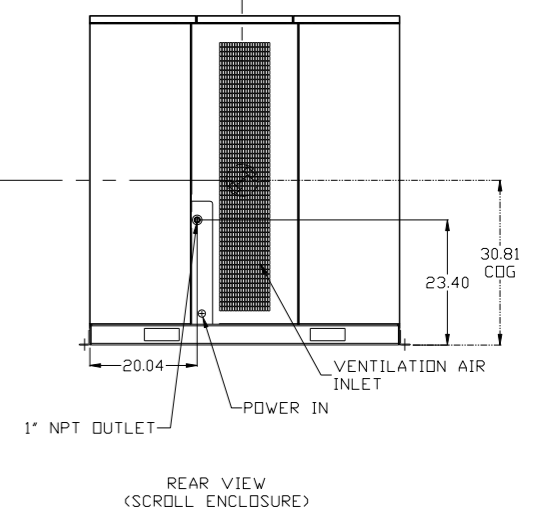
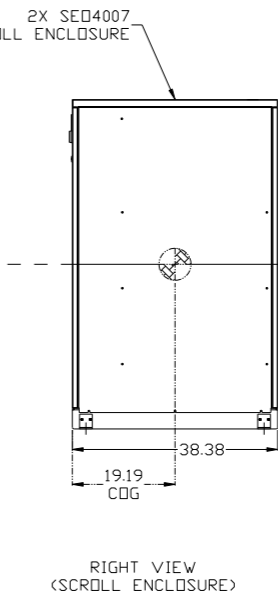
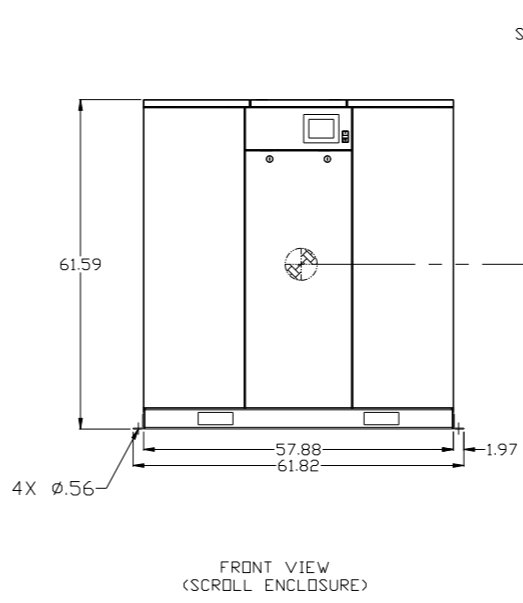
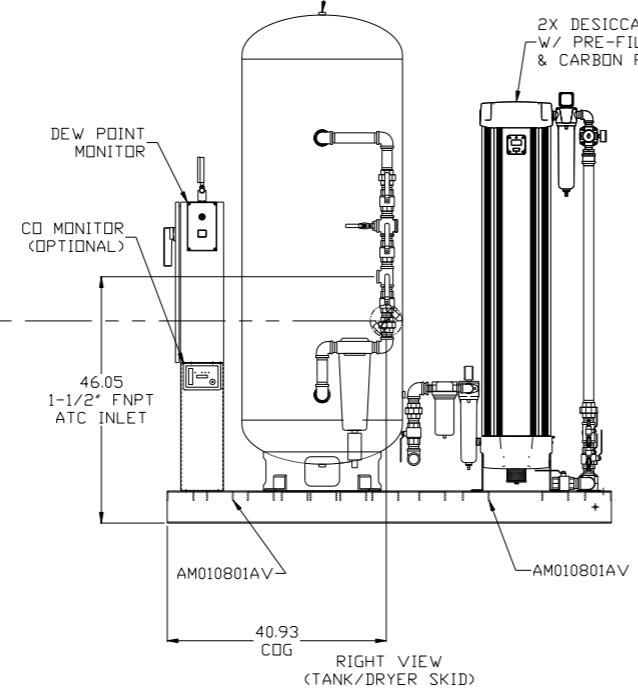
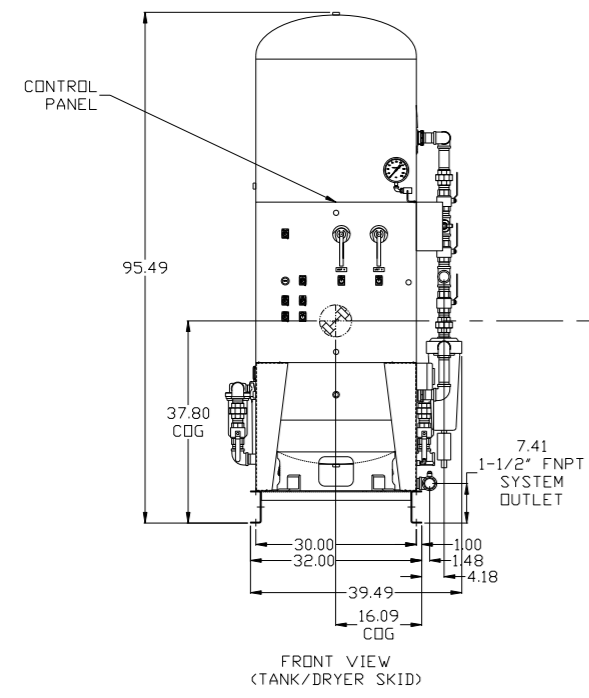
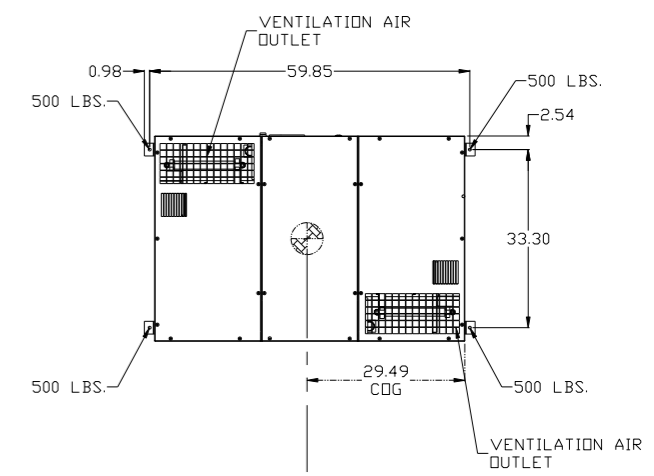
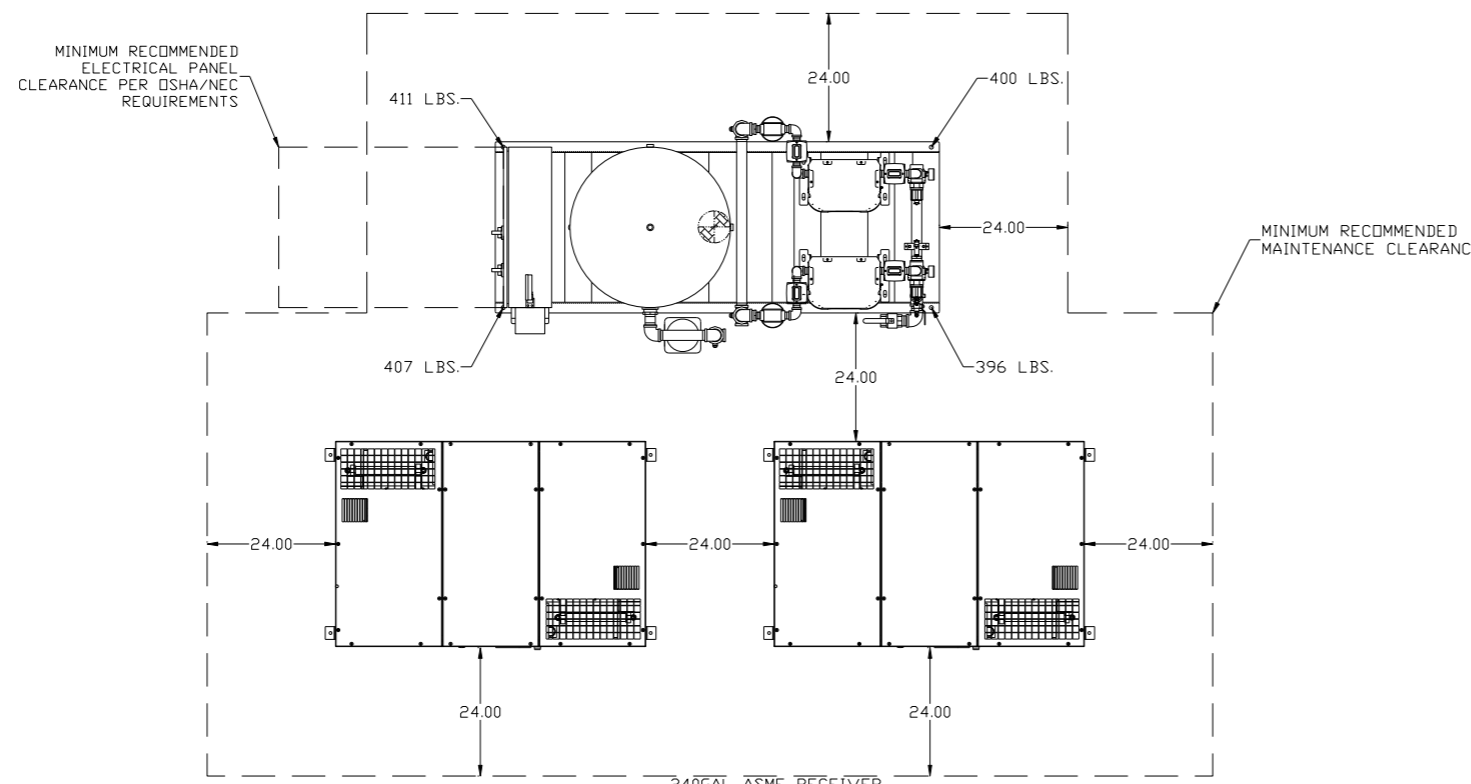


LEGEND	
	RELIEF VALVE
	INTAKE FILTER
	AIR FILTER
	BALL VALVE
	CHECK VALVE
	REGULATOR
	SEPARATOR
	FLEX LINE
	HIGH TEMP SWITCH
	UNION

NOTES:  
 1.) SHEET 1, UNIT LAYOUT.  
 2.) SHEET 2, UNIT FLOW SCHEMATIC.  
 3.) OUTLET CONNECTION: 1-1/2" FNPT X 1-1/2".  
 4.) POWER CONNECTION: 1- 208, 230, OR 460 VOLT.

SYMBOL LEGEND ⊖ = MINUS DRAFT ⊕ = PLUS DRAFT HRC = BRINELL HARDNESS		= ADDITIONAL CONTROL REQ'D = 150 PRODUCTION DRIVE, HARRISON, OHIO 45030 Ph: 888-769-7979 FAX: (513) 367-3125	
TOLERANCES NOT SPECIFIED .XX ± .XXX ± << DEG > ±		AUTOCAD REL2008 LT INCH DO NOT SCALE DRAWING FOR DIMENSIONS Sheet 2 of 2 SCALE 1:18	
CONFIDENTIAL DISCLOSURE This drawing is the property of the POWEREX, INC. of the SCOTT FETZER COMPANY and subject to return on demand. Its contents are confidential and must not be copied or submitted to outside parties for use or examination.		DRAWN BY: RK CHECKED BY: AEK APPROVED BY: ENGINEERING MFG/MRKTG JA CT 4/23/13 4/23/13 4/23/13 4/23/13	
MATERIAL: N/A			
PART NAME: 60HP ENCLOSE SCROLL FLOW SCHEMATIC		DWG NO: LSED4006 SIZE: D	

REV	ZONE	REVISION	DATE	ECN	NAME	CHKD
A-1	ALL	RELEASE TO PRODUCTION	4/23/13	PXEC0038	RK	AEK
B-1	2 ALL 2 D-5 1 ALL	ADDED/UPDATED FLEX LINES ON FLOW ADDED MAIN PANEL PRESSURE SWITCHES CORRECTED DIMENSIONS AND MAINTENANCE CLEARANCE	1/2/15	PXEC0093	AEK	KMB
C-1	1 ALL	ADDED CENTER OF GRAVITY INFORMATION	1/20/16	PXEC0137	AEK	GES
D-1	1 ALL	UPDATED TO NANO DRYERS	9/8/17	PXEC0174	AEK	GES
E-1	1 ALL	UPDATED SKID/FILTER, ADDED BRACKETS	2/8/18	PXEC0229	MAH	GES
F-1	4B	UPDATED FLOW FROM 3/4" TO 1 1/2"	4/12/18	PXEC0229	MAH	GES



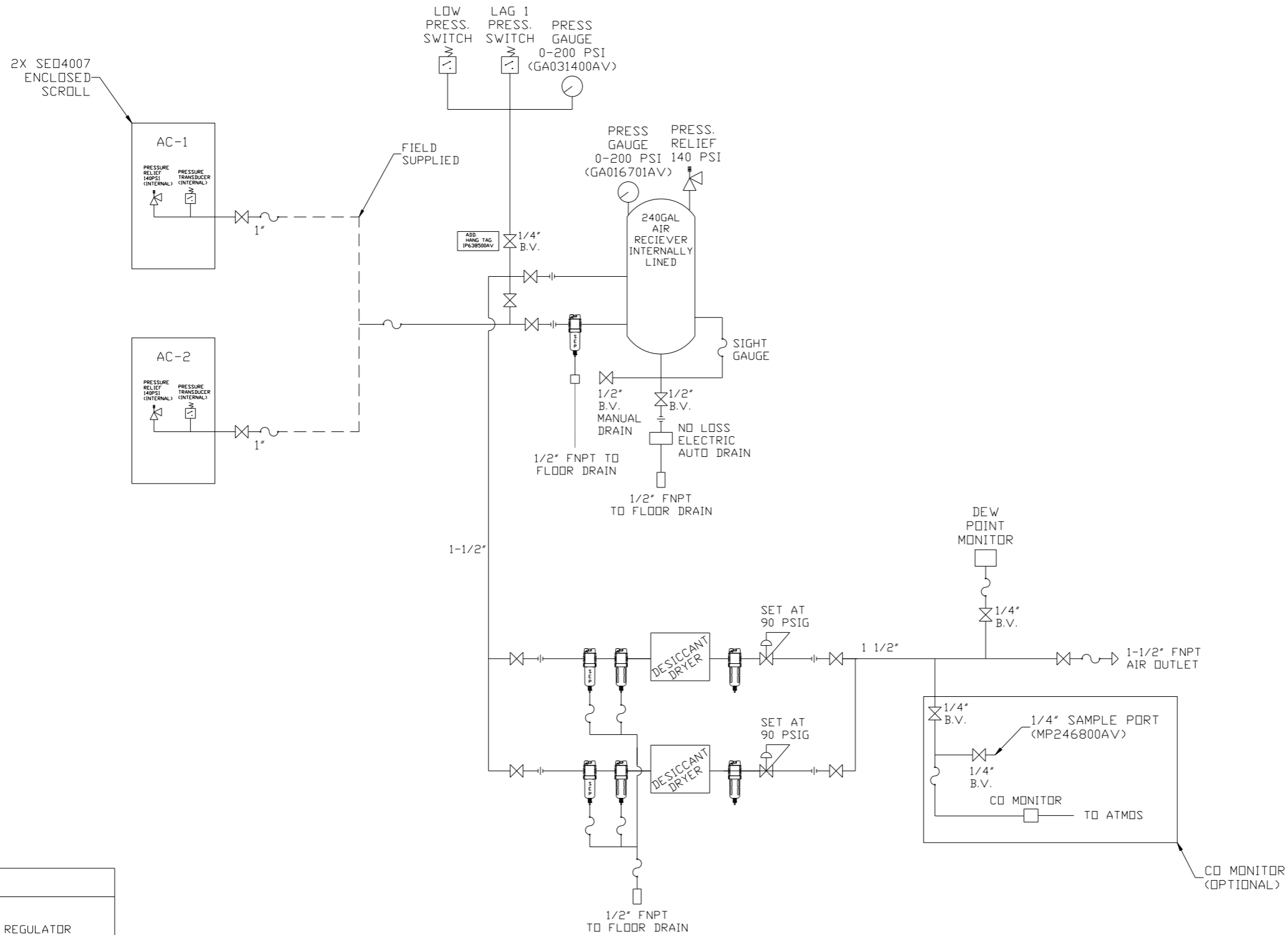
ATC/CONTROL SKID:  
TOTAL WEIGHT: 1635 LBS  
C.O.G. DIMENSIONS  
X (FRONT): -15.55"  
Y (RIGHT): 38.63"  
Z (HEIGHT): 40.85"

SED4007 SCROLL ENCLOSURE:  
TOTAL WEIGHT: 2000 LBS  
C.O.G. DIMENSIONS  
X (FRONT): -29.49"  
Y (RIGHT): 19.19"  
Z (HEIGHT): 30.81"

- NOTES:
- 1.) SHEET 1, UNIT LAYOUT.
  - 2.) SHEET 2, UNIT FLOW SCHEMATIC.
  - 3.) OUTLET CONNECTION: 1-1/2" FNPT X 1-1/2".
  - 4.) POWER CONNECTION: 1- 208, 230, OR 460 VOLT.
  - 5.) WHEN PACKAGE IS INSTALLED INTO THE FACILITY, MAKE SURE THAT THE INSTALLER REFERENCES TABLE 110.26 (A) (1) FOR MINIMUM WORKING AREA.

SYMBOL LEGEND		= ADDITIONAL CONTROL REQ'D		Drawings to conform to the current revision of the following ANSI standards	
⊖	MINUS DRAFT	⊕	PLUS DRAFT	ANSI Y14.3	Multi- and sectional view dims.
⊖	MINUS DRAFT	⊕	PLUS DRAFT	ANSI Y14.5M	Dimensioning and tolerancing
TOLERANCES NOT SPECIFIED		AUTOCAD REL2008 LT		DO NOT SCALE DRAWING FOR DIMENSIONS	
.XX ±		INCH		Sheet 1 of 2	SCALE 1:18
.XXX ±				Drawn BY RK	Checked BY AEK
<<DEG>> ±				Approved BY JA	Approved BY CT
CONFIDENTIAL DISCLOSURE		This drawing is the property of the POWEREX, INC. of the SCOTT TETZER COMPANY and subject to return on demand. Its contents are confidential and must not be copied or submitted to outside parties for use or examination.		4/23/13	4/23/13
MATERIAL		N/A		4/23/13	4/23/13
PART NAME		60HP ENCLOSE SCROLL			
240GAL DUAL DESICCANT LAB PACKAGE		DWG NO LSED4006		SIZE D	

REV	ZONE	REVISION	DATE	ECN	NAME	CHKD
A-1	ALL	RELEASE TO PRODUCTION	4/23/13	PXEC0038	RK	AEK
B-1	2 ALL 2 D-5 1 ALL	ADDED/UPDATED FLEX LINES ON FLOW ADDED MAIN PANEL PRESSURE SWITCHES CORRECTED DIMENSIONS AND MAINTENANCE CLEARANCE	1/2/15	PXEC0093	AEK	KMB
C-1	1 ALL	ADDED CENTER OF GRAVITY INFORMATION	1/20/16	PXEC0137	AEK	GES
D-1	1 ALL	UPDATED TO HAND DRYERS	9/8/17	PXEC0174	AEK	GES
E-1	1 ALL	UPDATED SKID/FILTER, ADDED BRACKETS	2/8/18	PXEC0229	MAH	GES
F-1	4B	UPDATED FLOW FROM 3/4" TO 1 1/2"	4/12/18	PXEC0229	MAH	GES



LEGEND	
	RELIEF VALVE
	INTAKE FILTER
	AIR FILTER
	BALL VALVE
	CHECK VALVE
	REGULATOR
	SEPARATOR
	FLEX LINE
	HIGH TEMP SWITCH
	UNION

- NOTES:
- 1.) SHEET 1, UNIT LAYOUT.
  - 2.) SHEET 2, UNIT FLOW SCHEMATIC.
  - 3.) OUTLET CONNECTION: 1-1/2" FNPT X 1-1/2".
  - 4.) POWER CONNECTION: 1- 208, 230, OR 460 VOLT.

SYMBOL LEGEND ⊖ = MINUS DRAFT ⊕ = PLUS DRAFT ○ = ADDITIONAL CONTROL REQ'D HRC = BRINELL HARDNESS		Drawings to conform to the current revision of the following ANSI standards: Y14.3 Multi and sectional view dgs. Y14.5M Dimensioning and tolerancing
TOLERANCES NOT SPECIFIED .XX ± .XXX ± << DEG > ±	AUTOCAD REL2008 LT INCH	DO NOT SCALE DRAWING FOR DIMENSIONS Sheet 2 of 2 SCALE 1:18
CONFIDENTIAL DISCLOSURE This drawing is the property of the POWEREX, INC. of the SCOTT FETZER COMPANY and subject to return on demand. Its contents are confidential and must not be copied or submitted to outside parties for use or examination.		
MATERIAL N/A		 150 PRODUCTION DRIVE, HARRISON, OHIO 45030 Ph: 888-769-7979 FAX: (513) 367-3125
PART NAME 60HP ENCLOSE SCROLL FLOW SCHEMATIC		DWG NO LSED4006 SIZE D