

UTILITY DATA, MODEL KNWA00-C/H

OPERATING AND MAX PRESSURE	NAME PLATE POWER	HEAT REJECTION TO AIR	APPROX. POWER CONSUMPTION	APPROX. SHIPPING WEIGHT
PSIG	HP	BTU/MIN	KW	LB
125	40	1,930	37	2,480

UTILITY DATA, MODEL KNWA00-D/L

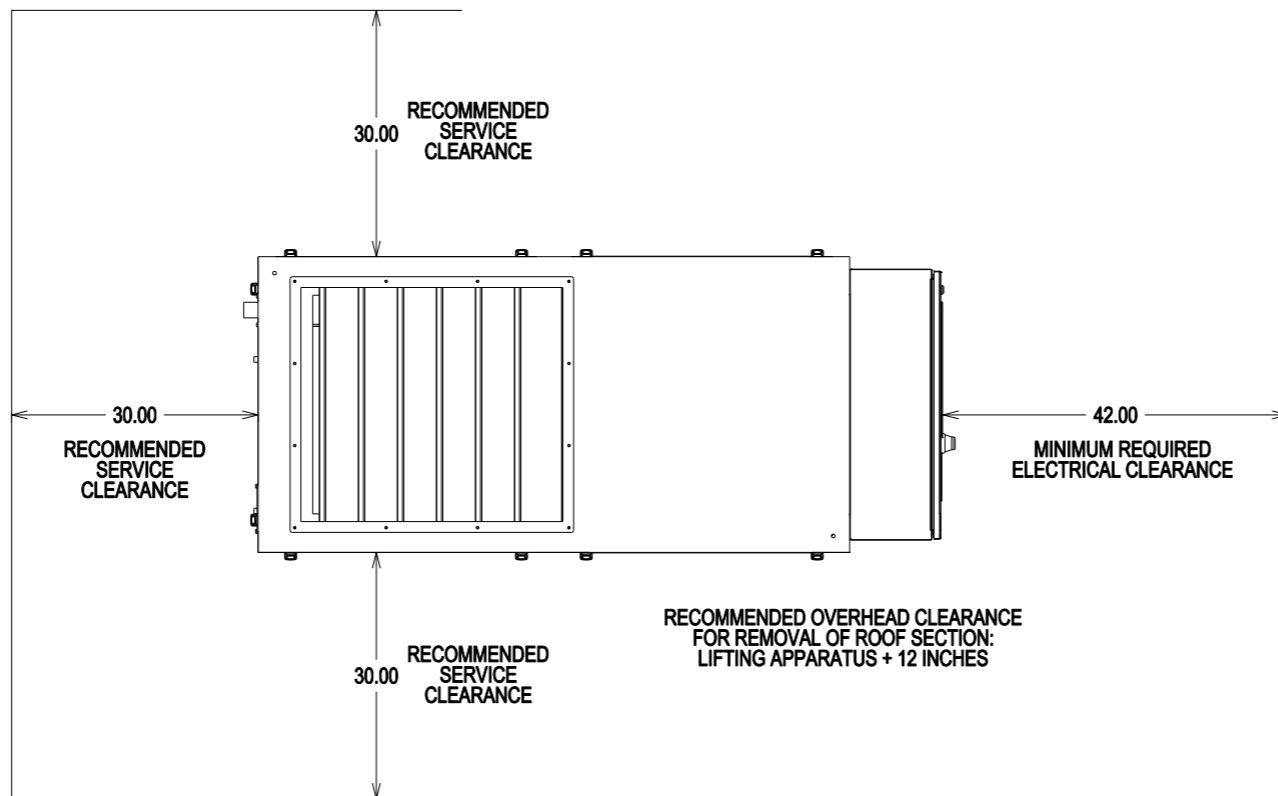
OPERATING AND MAX PRESSURE	NAME PLATE POWER	HEAT REJECTION TO AIR	APPROX. POWER CONSUMPTION	APPROX. SHIPPING WEIGHT
PSIG	HP	BTU/MIN	KW	LB
100	40	2250	43	2,480

ELECTRICAL REQUIREMENTS: 3Ø, 60 Hz, 480 VOLTS

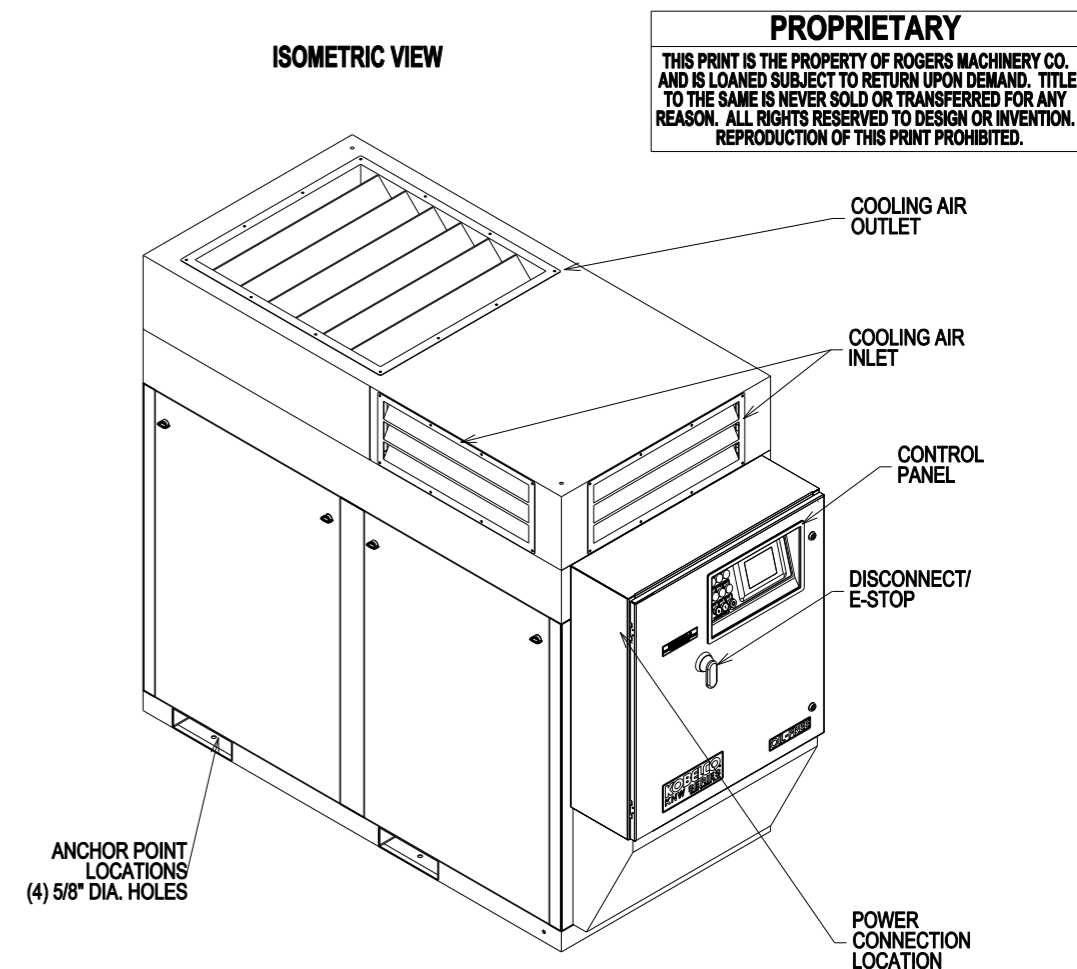
NOTES:
 1. PERFORMANCE DATA SHOWN IS FOR STANDARD CONDITIONS OF AMBIENT PRESSURE 14.5 PSIA, AMBIENT TEMPERATURE 80°F, RELATIVE HUMIDITY 60%. OPERATION IN OTHER CONDITIONS WILL AFFECT PERFORMANCE.
 2. VALUES WILL VARY ±4% FOR CAPACITY AND ±5% FOR SPECIFIC POWER.

NOT SUITABLE FOR OUTDOOR WEATHER.

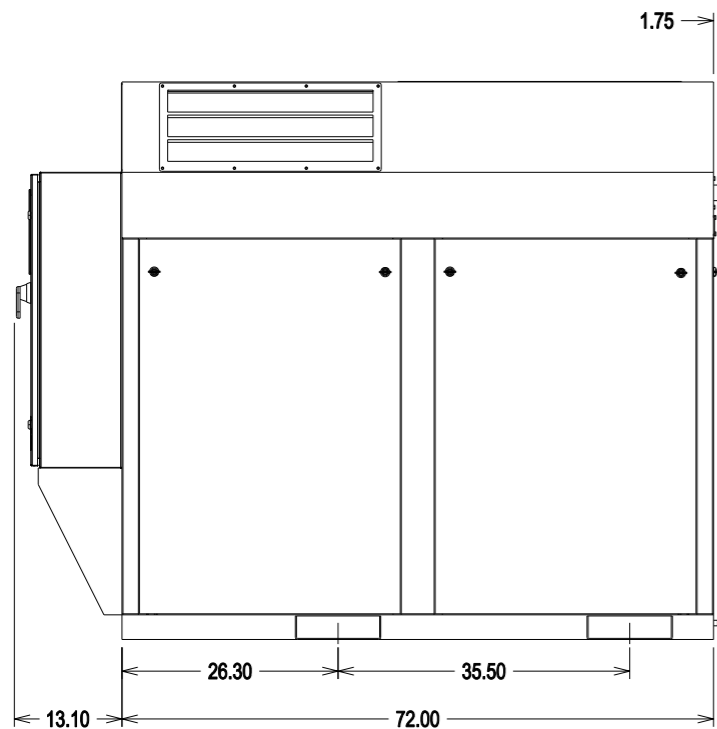
TOP VIEW WITH RECOMMENDED SERVICE CLEARANCES



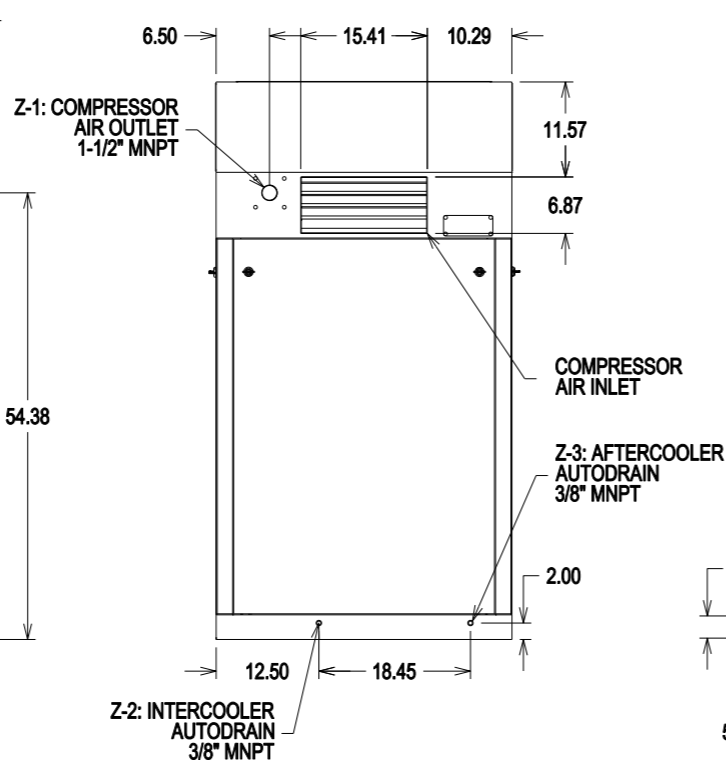
ISOMETRIC VIEW



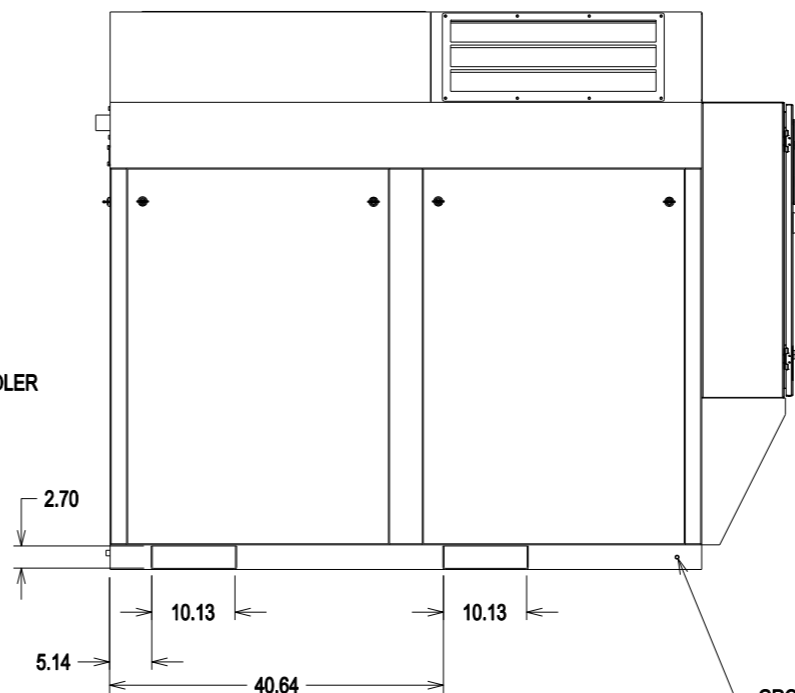
PROPRIETARY
 THIS PRINT IS THE PROPERTY OF ROGERS MACHINERY CO. AND IS LOANED SUBJECT TO RETURN UPON DEMAND. TITLE TO THE SAME IS NEVER SOLD OR TRANSFERRED FOR ANY REASON. ALL RIGHTS RESERVED TO DESIGN OR INVENTION. REPRODUCTION OF THIS PRINT PROHIBITED.



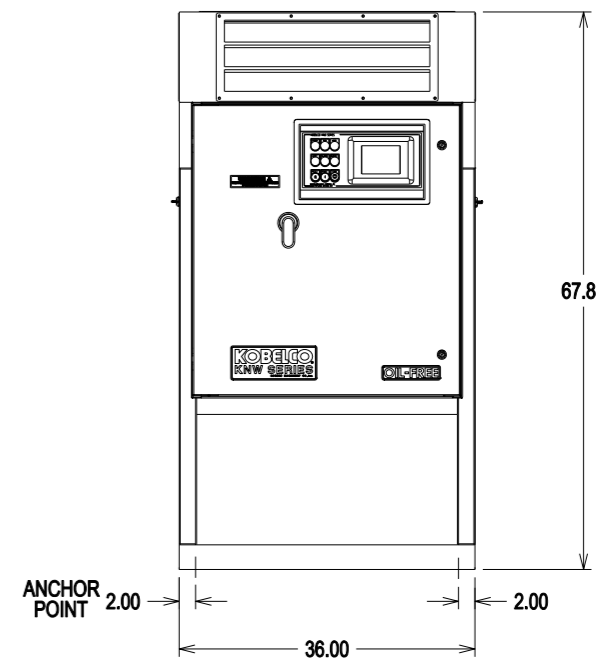
RIGHT VIEW



BACK VIEW



LEFT VIEW



FRONT VIEW

DIMENSIONS IN INCHES



ROGERS MACHINERY COMPANY, INC.
 CORPORATE ENGINEERING
 14650 S.W. 72ND AVENUE
 PORTLAND, OREGON 97224
 www.rogers-machinery.com

REV	DATE	BY	DESCRIPTION

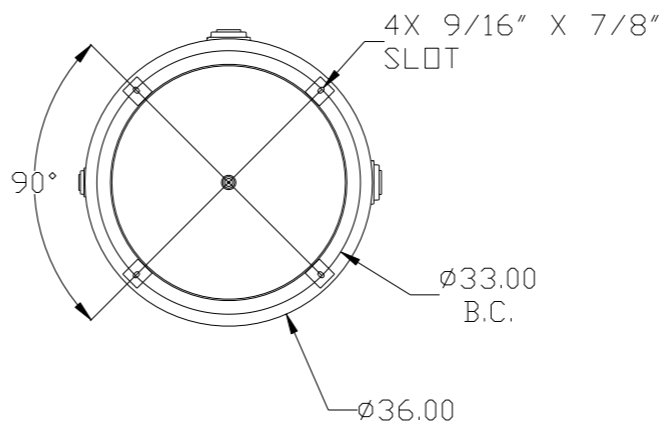
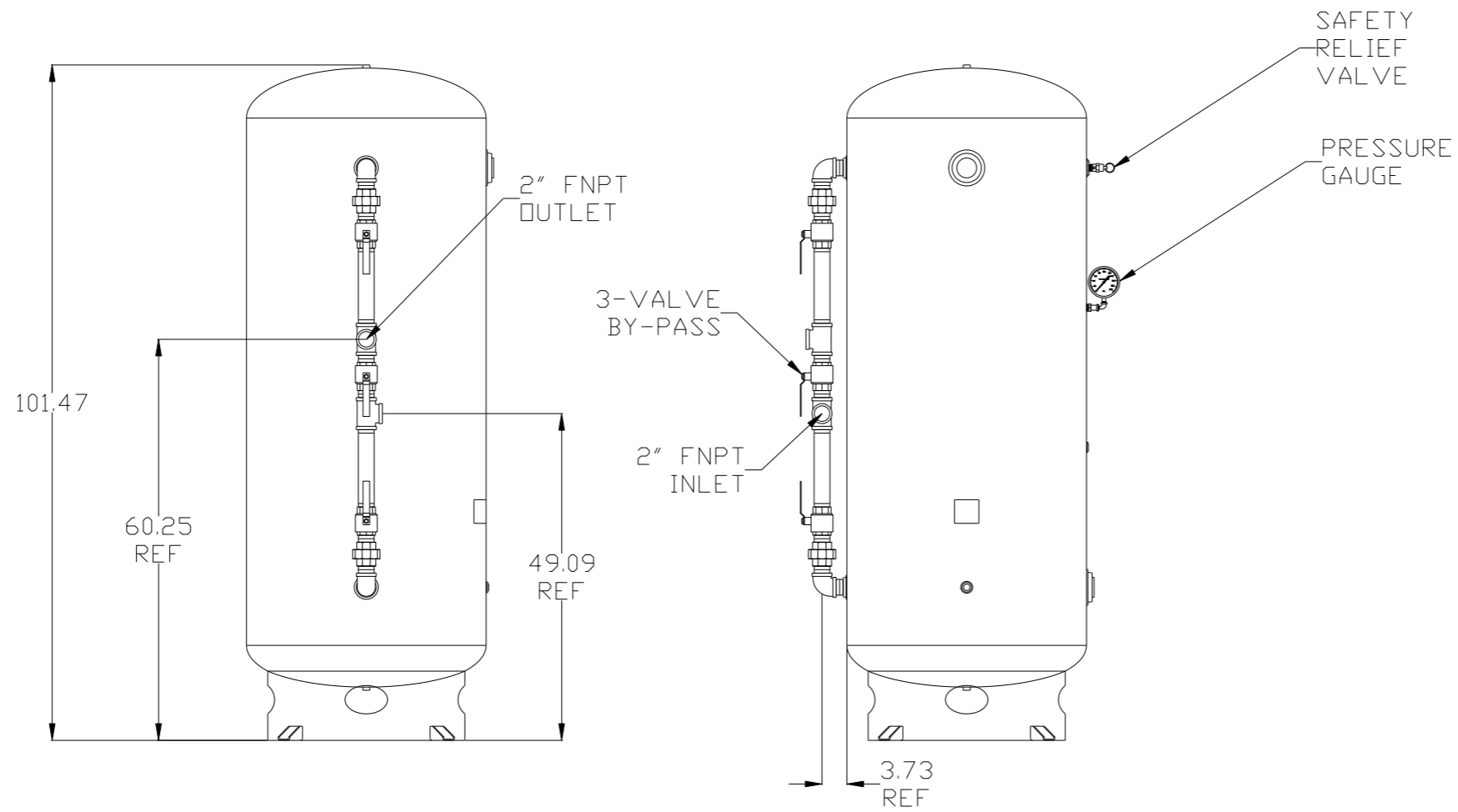
DRAWN	G.E. WILKER	4DEC13
CHECKED		
SIZE	B	SCALE 1:24
SERIAL#	POWEREX - TBD	

COMPRESSOR ASSEMBLY
 KOBELCO KNW SERIES AIR COMPRESSOR
 MODEL KNWA00-C/H or D/L, AIR-COOLED
 WYE-DELTA STARTER
 STANDARD ASSEMBLY

DRAWING NUMBER
K40345A.0
 SHEET 1 OF 1

GALLONS	SIZE	DESIGN PRESSURE	WEIGHT lbs.	DESCRIPTION
400	36 x 101	165 PSI	700	ASME VERTICAL INDUSTRIAL w/BASE RING

REV	ZONE	REVISION	DATE	ECN	NAME	CHKD
A-1	ALL	SUBMITTAL DRAWINGS	8/7/13	PKE0052	RK	AEK
B-1	ALL	RELEASE FOR PRODUCTION	8/7/13	PKE0052	RK	AEK

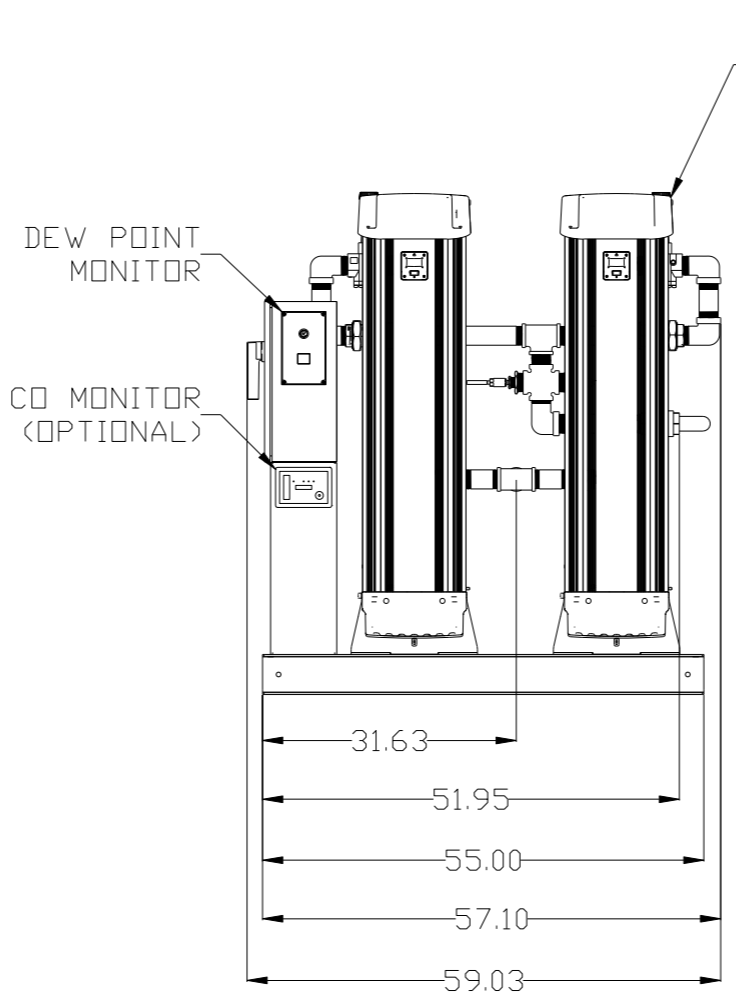
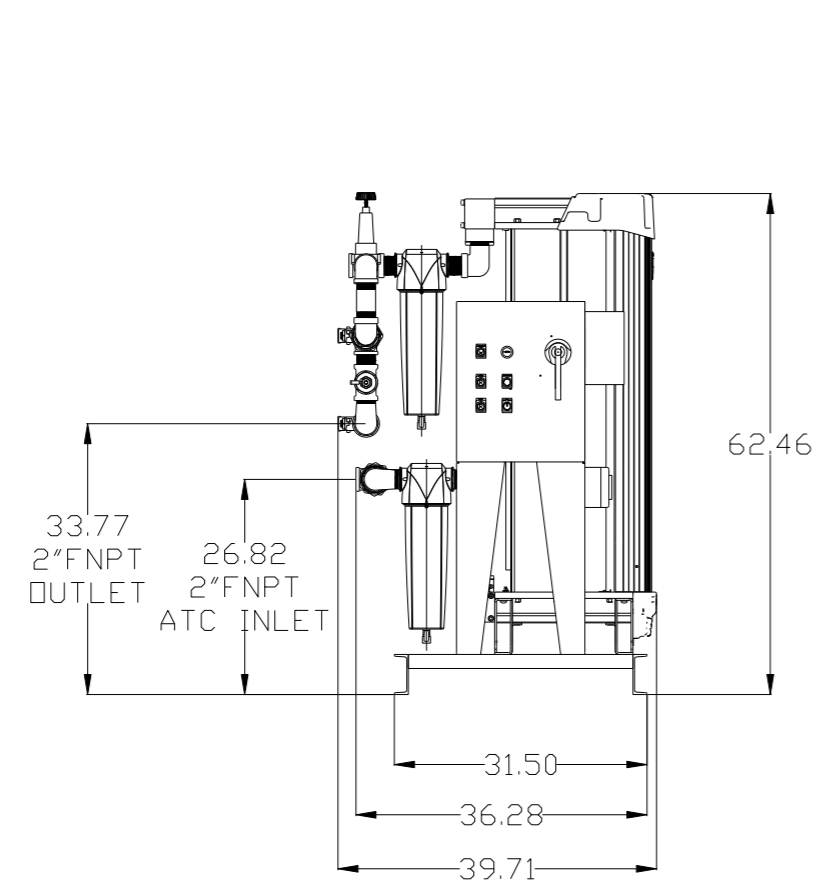
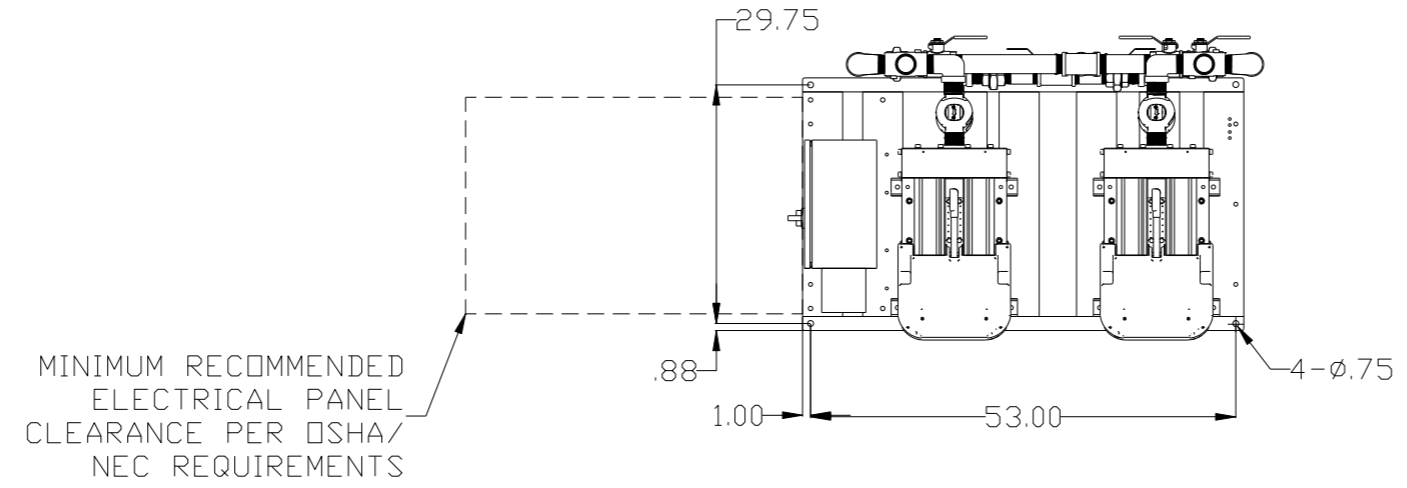


NOTES:
 1) ASME CERTIFIED VESSEL
 2) ALL DIMENSIONS ARE REFERENCE DIMENSIONS
 3) APPROXIMATE WT. - 730 LBS.

SYMBOL LEGEND ⊖ = MINUS DRAFT ⊕ = PLUS DRAFT ∅ = ADDITIONAL CONTROL REQ'D Ⓜ = BRINELL HARDNESS		Drawings to conform to the current revision of the following ANSI standards: Y14.3 Multi and sectional view deqs Y14.5M Dimensioning and tolerancing	
TOLERANCES NOT SPECIFIED .XX ± .XXX ± <C DEG > ±		AUTOCAD REL2008 LT INCH DO NOT SCALE DRAWING FOR DIMENSIONS Sheet 2 of 5 SCALE 1:12	
CONFIDENTIAL DISCLOSURE This drawing is the property of POWEREX, INC. OF THE SCOTT FETZER COMPANY and subject to return on demand. Its contents are confidential and must not be copied or submitted to outside parties for use or examination.		DRAWN BY: RK CHECKED BY: AEK APPROVED BY: JA, CT DATES: 8/6/13, 8/7/13, 8/7/12, 8/7/12	
MATERIAL: N/A			
PART NAME: 40-100HP VFD TRIPLEX ENCLOSED COMPRESSOR		150 PRODUCTION DRIVE, HARRISON, OHIO 45030 Ph: 888-769-7979 FAX: (513) 367-3125	
400 GALLON DUAL DESICCANT PACKAGE		DVG NO: LTRE0407 SIZE: D	

8 7 6 5 4 3 2 1

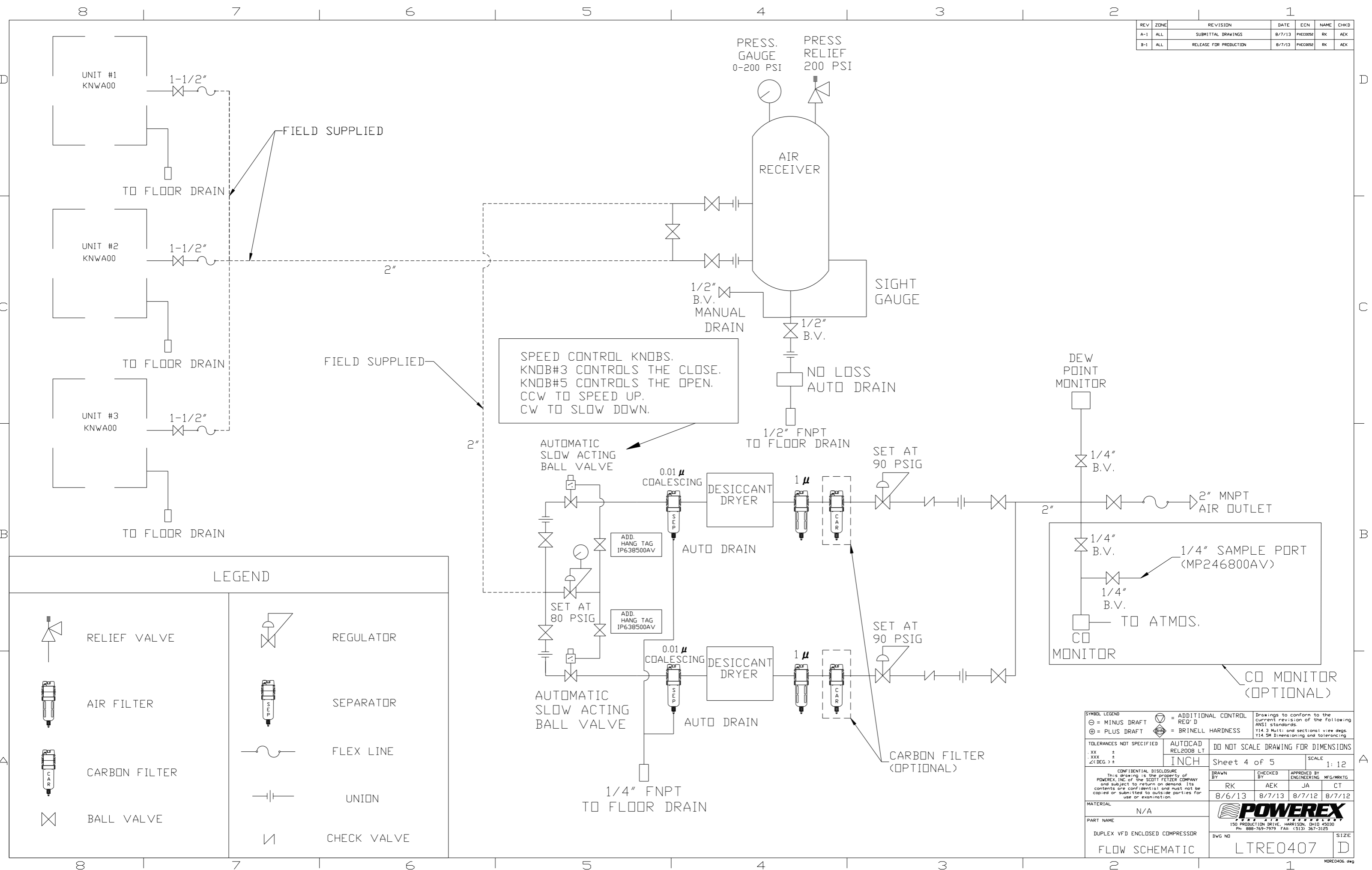
REV	ZONE	REVISION	DATE	ECN	NAME	CHKD
A-1	ALL	SUBMITTAL DRAWINGS	8/7/13	PKE0052	RK	AEK
B-1	ALL	RELEASE FOR PRODUCTION	8/7/13	PKE0052	RK	AEK



SYMBOL LEGEND ⊖ = MINUS DRAFT ⊕ = PLUS DRAFT .XX ± .XXX ± \angle (DEG.) ±		= ADDITIONAL CONTROL REQ' D = BRINELL HARDNESS		Drawings to conform to the current revision of the following ANSI standards: Y14.3 Multi and sectional view dsgs Y14.5M Dimensioning and tolerancing
TOLERANCES NOT SPECIFIED .XX ± .XXX ± \angle (DEG.) ±		AUTOCAD REL2008 LT INCH	DO NOT SCALE DRAWING FOR DIMENSIONS Sheet 3 of 5 SCALE 1:12	
CONFIDENTIAL DISCLOSURE This drawing is the property of POWEREX, INC. of the SCOTT FETZER COMPANY and subject to return on demand. Its contents are confidential and must not be copied or submitted to outside parties for use or examination.				
DRAWN BY RK		CHECKED BY AEK		APPROVED BY ENGINEERING MFG/MKTG JA CT
MATERIAL N/A		DATE 8/6/13 8/7/13 8/7/12 8/7/12		SIZE D
PART NAME DRYER PACKAGE SKID		DWG NO LTRE0407		SIZE 55" x 31.5"

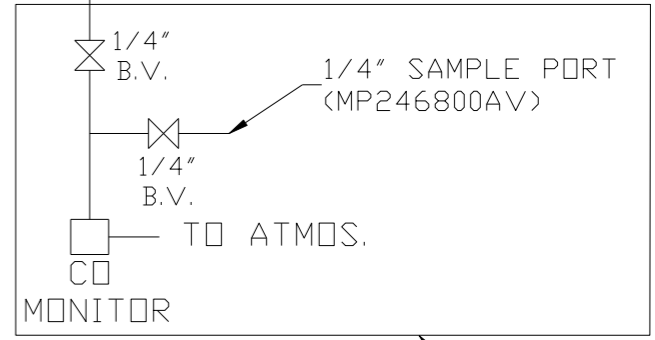
8 7 6 5 4 3 2 1

REV	ZONE	REVISION	DATE	ECN	NAME	CHKD
A-1	ALL	SUBMITTAL DRAWINGS	8/7/13	PXC0052	RK	AEK
B-1	ALL	RELEASE FOR PRODUCTION	8/7/13	PXC0052	RK	AEK



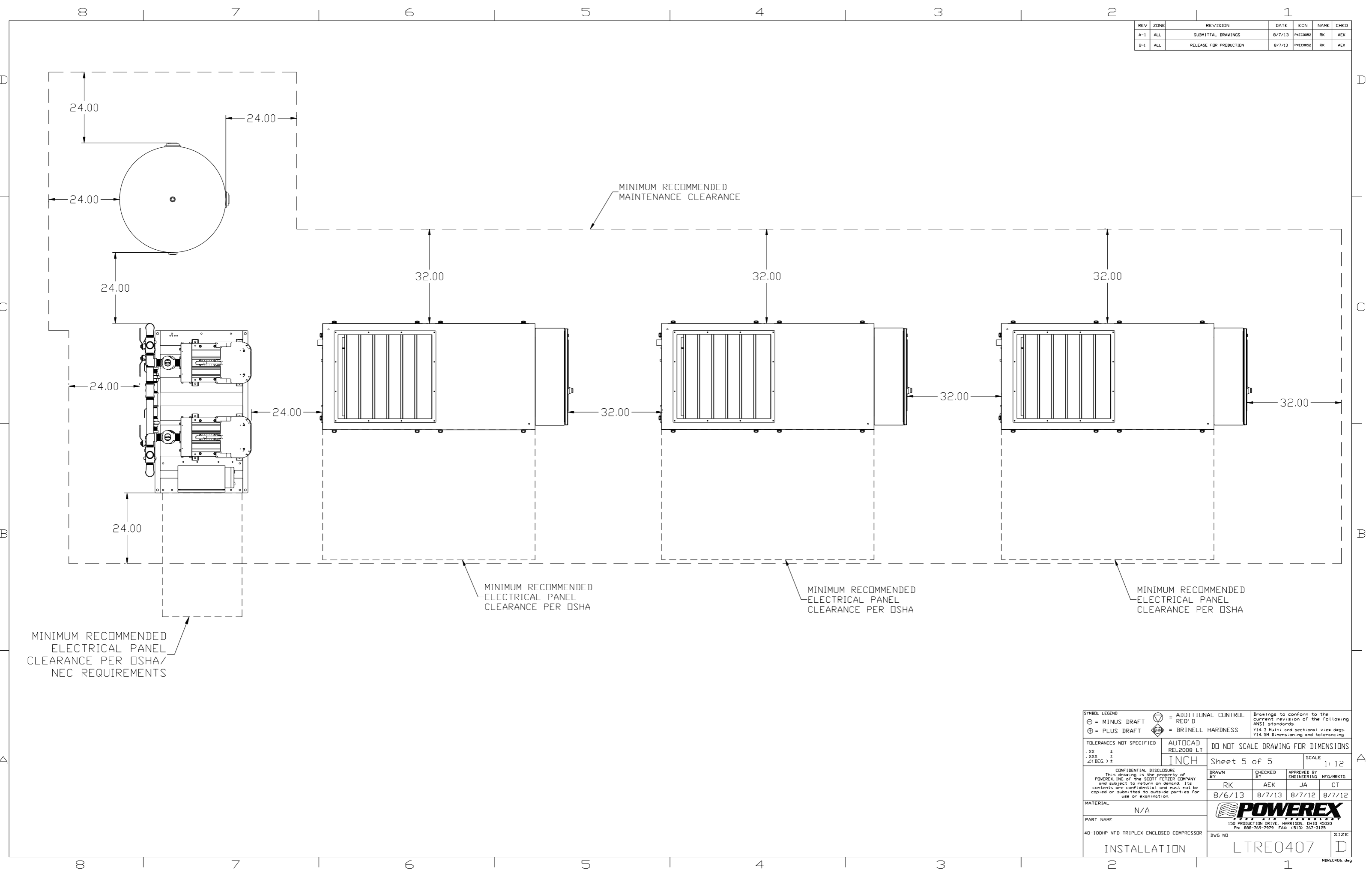
SPEED CONTROL KNOBS.
 KNOB#3 CONTROLS THE CLOSE.
 KNOB#5 CONTROLS THE OPEN.
 CCW TO SPEED UP.
 CW TO SLOW DOWN.

LEGEND	
	RELIEF VALVE
	AIR FILTER
	CARBON FILTER
	BALL VALVE
	REGULATOR
	SEPARATOR
	FLEX LINE
	UNION
	CHECK VALVE



SYMBOL LEGEND		= ADDITIONAL CONTROL REQ'D		Drawings to conform to the current revision of the following ANSI standards: Y14.3 Multi and sectional view des. Y14.5M Dimensioning and tolerancing	
⊖	MINUS DRAFT	Ⓢ	BRINELL HARDNESS	TOLERANCES NOT SPECIFIED	
⊕	PLUS DRAFT	AUTOCAD REL2008 LT		DO NOT SCALE DRAWING FOR DIMENSIONS	
.XX ±		INCH		Sheet 4 of 5	
.XXX ±				SCALE 1:12	
<<DEG.> ±					
CONFIDENTIAL DISCLOSURE This drawing is the property of POWEREX, INC. of the SCOTT FETZER COMPANY and subject to return on demand. Its contents are confidential and must not be copied or submitted to outside parties for use or examination.					
DRAWN BY		CHECKED BY		APPROVED BY	
RK		AEK		JA CT	
8/6/13		8/7/13		8/7/12 8/7/12	
MATERIAL N/A					
PART NAME					
DUPLX VFD ENCLOSED COMPRESSOR					
FLOW SCHEMATIC					
DWG NO				SIZE	
LTRE0407				D	

REV	ZONE	REVISION	DATE	ECN	NAME	CHKD
A-1	ALL	SUBMITTAL DRAWINGS	8/7/13	PXEC0052	RK	AEK
B-1	ALL	RELEASE FOR PRODUCTION	8/7/13	PXEC0052	RK	AEK



MINIMUM RECOMMENDED ELECTRICAL PANEL CLEARANCE PER OSHA/NEC REQUIREMENTS

MINIMUM RECOMMENDED MAINTENANCE CLEARANCE

MINIMUM RECOMMENDED ELECTRICAL PANEL CLEARANCE PER OSHA

MINIMUM RECOMMENDED ELECTRICAL PANEL CLEARANCE PER OSHA

MINIMUM RECOMMENDED ELECTRICAL PANEL CLEARANCE PER OSHA

SYMBOL LEGEND ⊖ = MINUS DRAFT ⊕ = PLUS DRAFT ⊕ = ADDITIONAL CONTROL REQ'D ⊕ = BRINELL HARDNESS		Drawings to conform to the current revision of the following ANSI standards: Y14.9 Multi and sectional view dsgs. Y14.5M Dimensioning and tolerancing	
TOLERANCES NOT SPECIFIED .XX ± .XXX ± <DEG. > ±		AUTOCAD REL2008 LT INCH DO NOT SCALE DRAWING FOR DIMENSIONS Sheet 5 of 5 SCALE 1:12	
CONFIDENTIAL DISCLOSURE This drawing is the property of POWEREX, INC. of the SCOTT FITZGER COMPANY and subject to return on demand. Its contents are confidential and must not be copied or submitted to outside parties for use or examination.		DRAWN BY: RK CHECKED BY: AEK APPROVED BY: ENGINEERING MFG/MRKTG: JA CT 8/6/13 8/7/13 8/7/12 8/7/12	
MATERIAL: N/A PART NAME: 40-100HP VFD TRIPLEX ENCLOSED COMPRESSOR		 150 PRODUCTION DRIVE, HARRISON, OHIO 45030 Ph: 888-769-7979 FAX: (513) 367-3125	
DVG NO: INSTALLATION		SIZE: D LTRE0407	