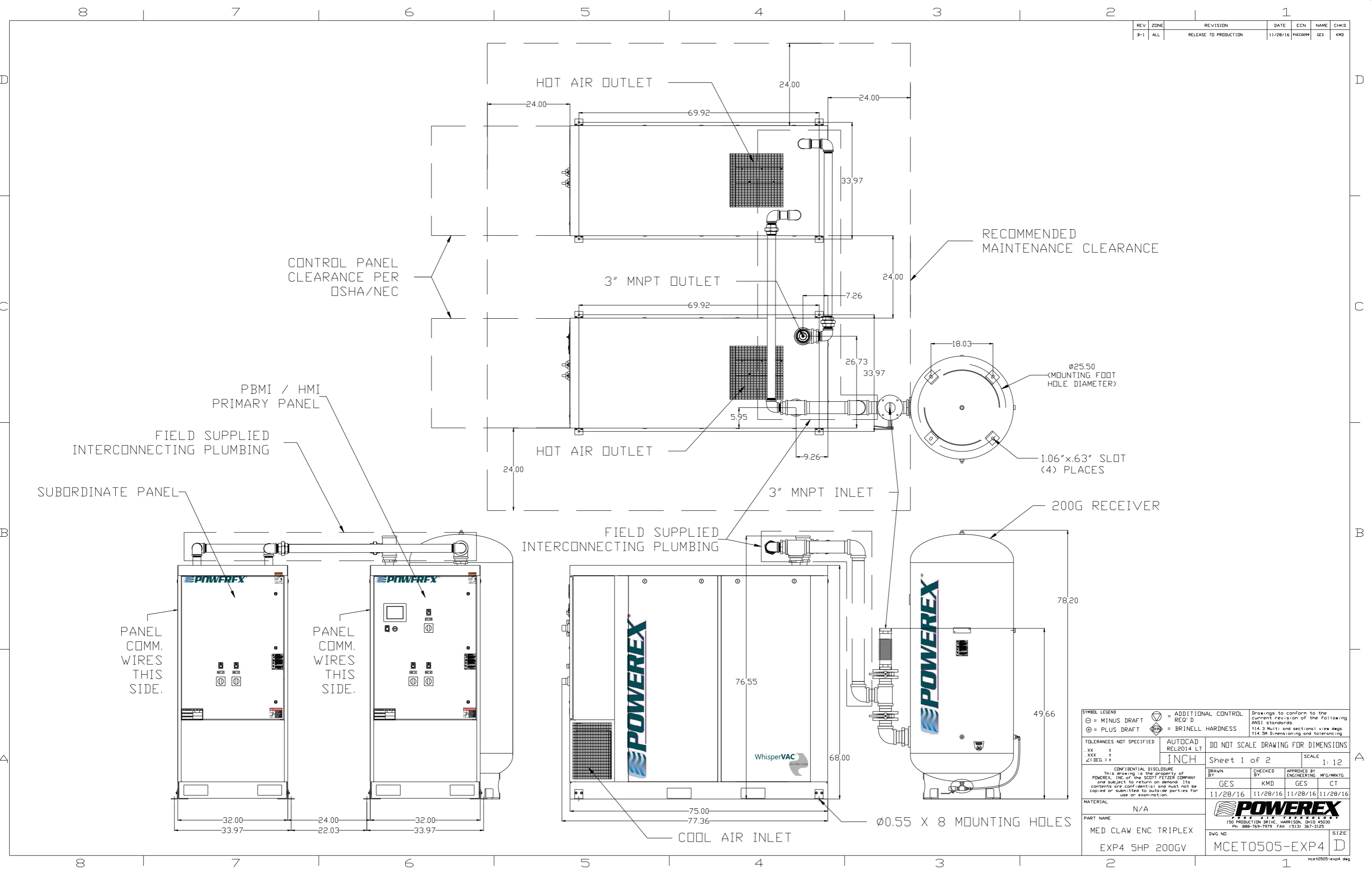
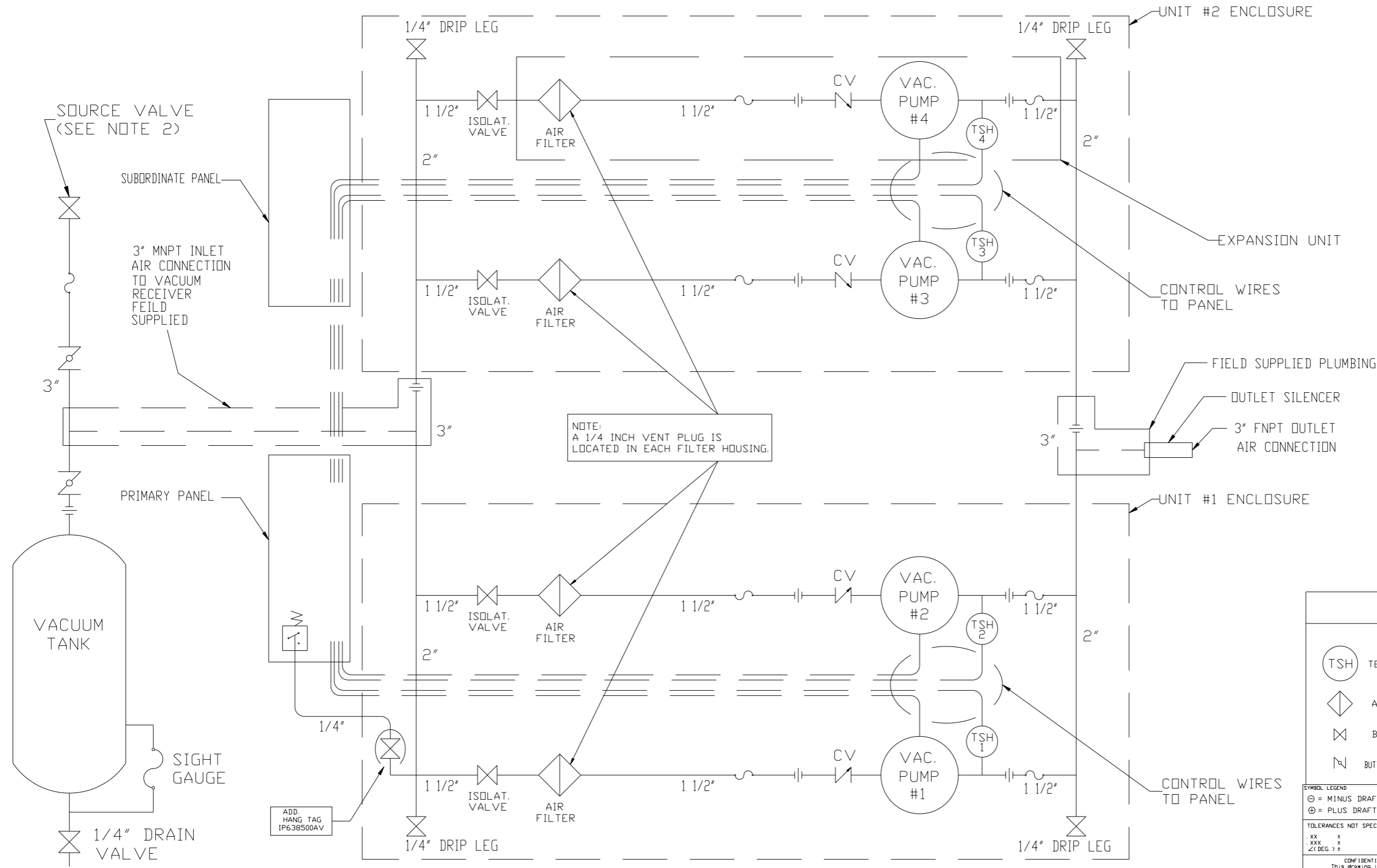


REV	ZONE	REVISION	DATE	ECN	NAME	CHKD
B-1	ALL	RELEASE TO PRODUCTION	11/28/16	PKC0099	GES	KMD



SYMBOL LEGEND		= ADDITIONAL CONTROL REQ'D		Drawings to conform to the current revision of the following ANSI standards	
⊖	MINUS DRAFT	⊕	PLUS DRAFT	⊖	BRINELL HARDNESS
TOLERANCES NOT SPECIFIED		AUTOCAD REL2014 LT		DO NOT SCALE DRAWING FOR DIMENSIONS	
.XX	±	INCH		Sheet 1 of 2	
.XXX	±			SCALE 1:12	
<∠DEG.>	±				
CONFIDENTIAL DISCLOSURE This drawing is the property of POWEREX, INC. of the SCOTT FETZER COMPANY and subject to return on demand. Its contents are confidential and must not be copied or submitted to outside parties for use or examination.					
DRAWN BY		CHECKED BY		APPROVED BY	
GES		KMD		GES CT	
11/28/16		11/28/16		11/28/16 11/28/16	
MATERIAL		N/A		POWEREX	
PART NAME		MED CLAW ENC TRIPLEX		150 PRODUCTION DRIVE, HARRISON, OHIO 45030 Ph: 888-769-7979 FAX: (513) 367-3125	
EXP4 5HP 200GV		DWG NO		MCET0505-EXP4	
				SIZE D	

REV	ZONE	REVISION	DATE	ECN	NAME	CHKD
B-1	ALL	RELEASE TO PRODUCTION	11/28/16	PHC0099	GES	KMD



NOTE:
A 1/4 INCH VENT PLUG IS
LOCATED IN EACH FILTER HOUSING.

- NOTES:
1) TSH - TEMPERATURE SWITCH HIGH
2) PER NFPA THE SYSTEM WILL REQUIRE A SOURCE VALVE (SUPPLIED BY OTHERS).

LEGEND	
(TSH) TEMP. SWITCH	VACUUM TRANSDUCER
AIR FILTER	CHECK VALVE
BALL VALVE	FLEX LINE
BUTTERFLY BALL VALVE	UNION

SYMBOL LEGEND: ⊖ = MINUS DRAFT, ⊕ = PLUS DRAFT, ⊕ = ADDITIONAL CONTROL REQ'D, ⊕ = BRINELL HARDNESS

TOLERANCES NOT SPECIFIED: .XX ±, .XXX ±, <Z(DEG.) ±

CONFIDENTIAL DISCLOSURE: This drawing is the property of POWEREX, INC. of the SCOTT FETZER COMPANY and subject to return on demand. Its contents are confidential and must not be copied or submitted to outside parties for use or examination.

MATERIAL: N/A		PART NAME: MED CLAW ENCLOSED	
DRAWN BY: GES		CHECKED BY: KMD	
APPROVED BY: ENGINEERING		MFG/MRKTG: CT	
11/28/16		11/28/16	
11/28/16		11/28/16	
11/28/16		11/28/16	
11/28/16		11/28/16	

POWEREX 150 PRODUCTION DRIVE, HARRISON, OHIO 43030 Ph: 888-769-7979 FAX: (513) 367-3125