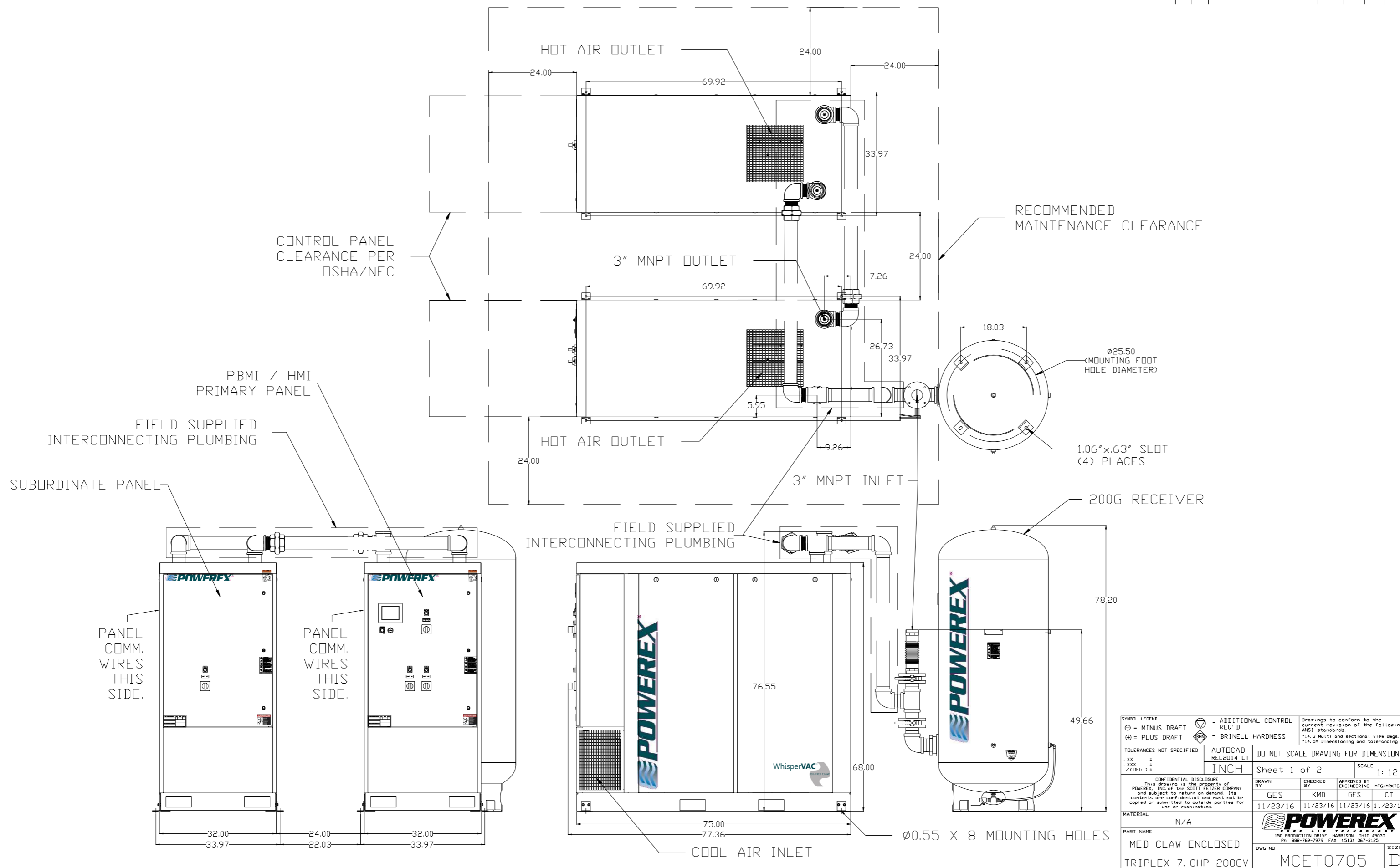


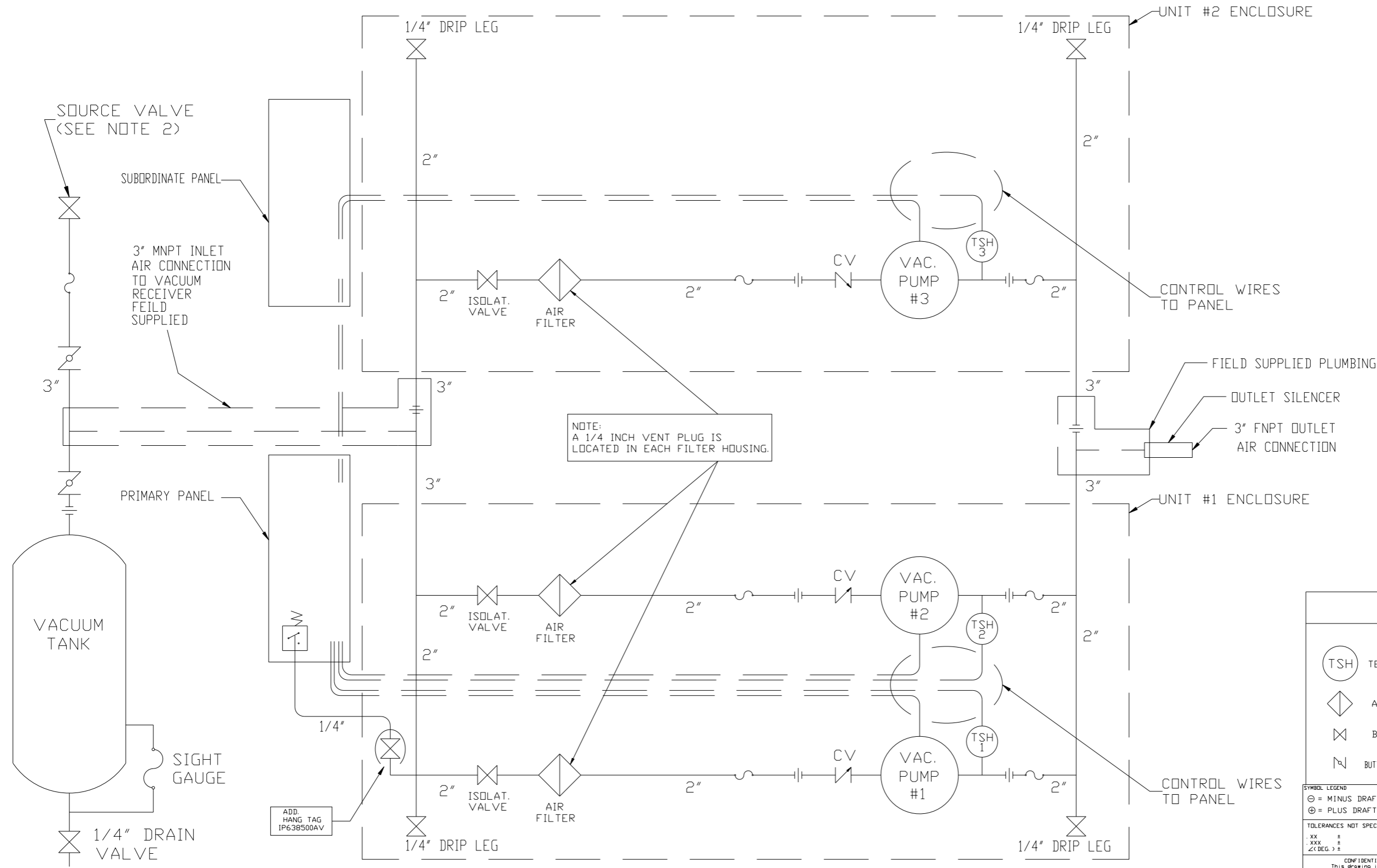
REV	ZONE	REVISION	DATE	ECN	NAME	CHKD
B-1	ALL	RELEASE TO PRODUCTION	11/23/16	PKC0099	GES	KMD



SYMBOL LEGEND		= ADDITIONAL CONTROL REQ'D		Drawings to conform to the current revision of the following ANSI standards	
⊖	MINUS DRAFT	⊕	PLUS DRAFT	⊖	BRINELL HARDNESS
TOLERANCES NOT SPECIFIED		AUTOCAD REL2014 LT		DO NOT SCALE DRAWING FOR DIMENSIONS	
.XX	±	INCH		Sheet 1 of 2	
.XXX	±			SCALE 1:12	
\angle	(DEG.) ±				
CONFIDENTIAL DISCLOSURE: This drawing is the property of POWEREX, INC. of the SCOTT FETZER COMPANY and subject to return on demand. Its contents are confidential and must not be copied or submitted to outside parties for use or examination.					
MATERIAL		N/A		PART NAME	
				MED CLAW ENCLOSED	
				TRIPLEX 7.0HP 200GV	
				DWG NO	
				MCETO705	
				SIZE	
				D	

nce10705.dwg

REV	ZONE	REVISION	DATE	ECN	NAME	CHKD
B-1	ALL	RELEASE TO PRODUCTION	11/23/16	PHC0099	GES	KMD



NOTE:
A 1/4 INCH VENT PLUG IS
LOCATED IN EACH FILTER HOUSING.

- NOTES:
1) TSH - TEMPERATURE SWITCH HIGH
2) PER NFPA THE SYSTEM WILL REQUIRE A SOURCE VALVE (SUPPLIED BY OTHERS).

LEGEND	
(TSH) TEMP. SWITCH	VACUUM TRANSDUCER
AIR FILTER	CHECK VALVE
BALL VALVE	FLEX LINE
BUTTERFLY BALL VALVE	UNION

SYMBOL LEGEND
 ⊖ = MINUS DRAFT
 ⊕ = PLUS DRAFT
 ⊕ = ADDITIONAL CONTROL REQ'D
 ⊕ = BRINELL HARDNESS

TOLERANCES NOT SPECIFIED
 .XX ±
 .XXX ±
 <Z(DEG.) ±

CONFIDENTIAL DISCLOSURE
 This drawing is the property of POWEREX, INC. of the SCOTT FETZER COMPANY and subject to return on demand. Its contents are confidential and must not be copied or submitted to outside parties for use or examination.

MATERIAL		N/A	
PART NAME		MED CLAW ENCLOSED TRIPLEX VACUUM	
DWG NO		MCET0705	
SIZE		D	

DO NOT SCALE DRAWING FOR DIMENSIONS
 Sheet 2 of 2
 SCALE 1:12

