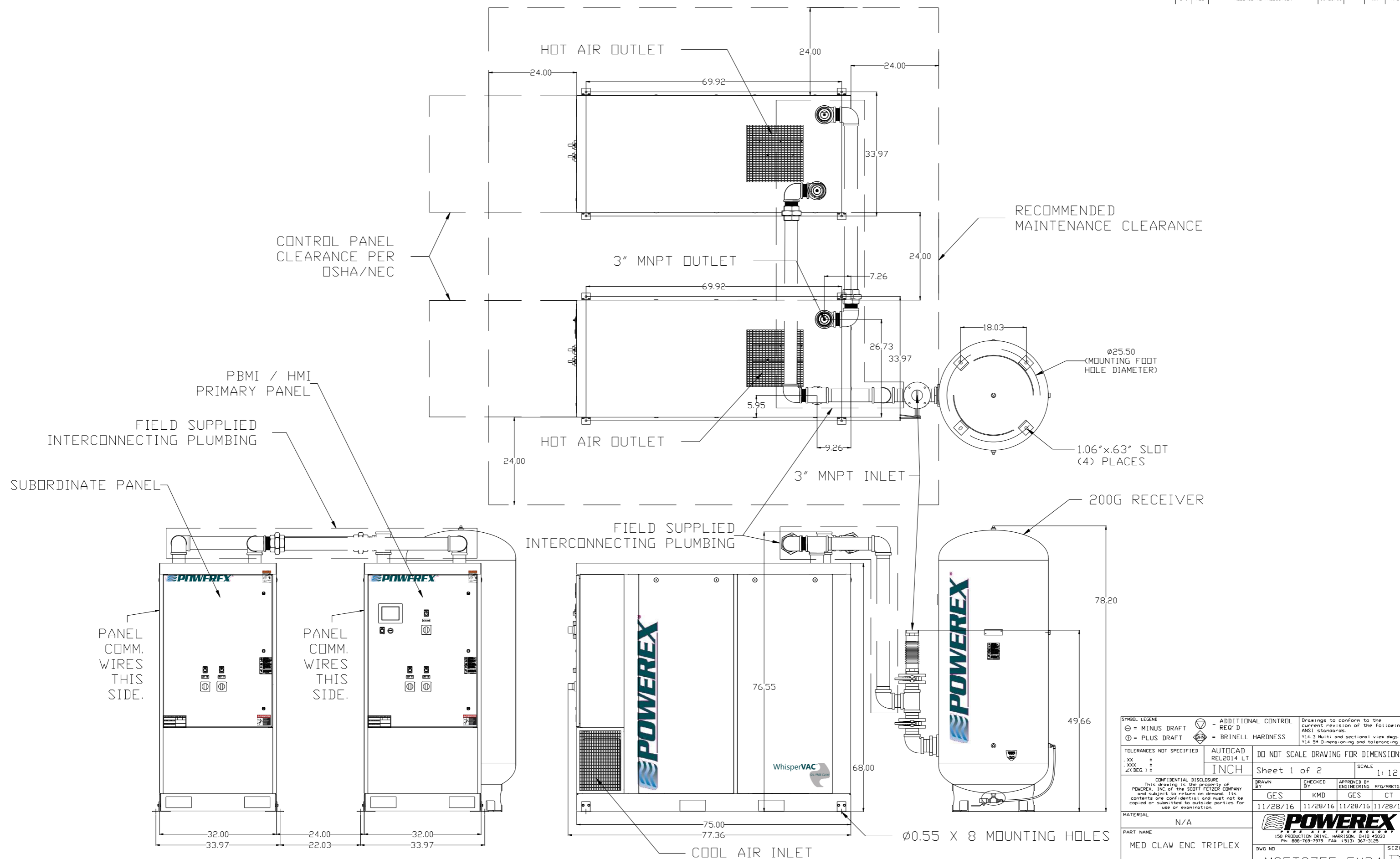


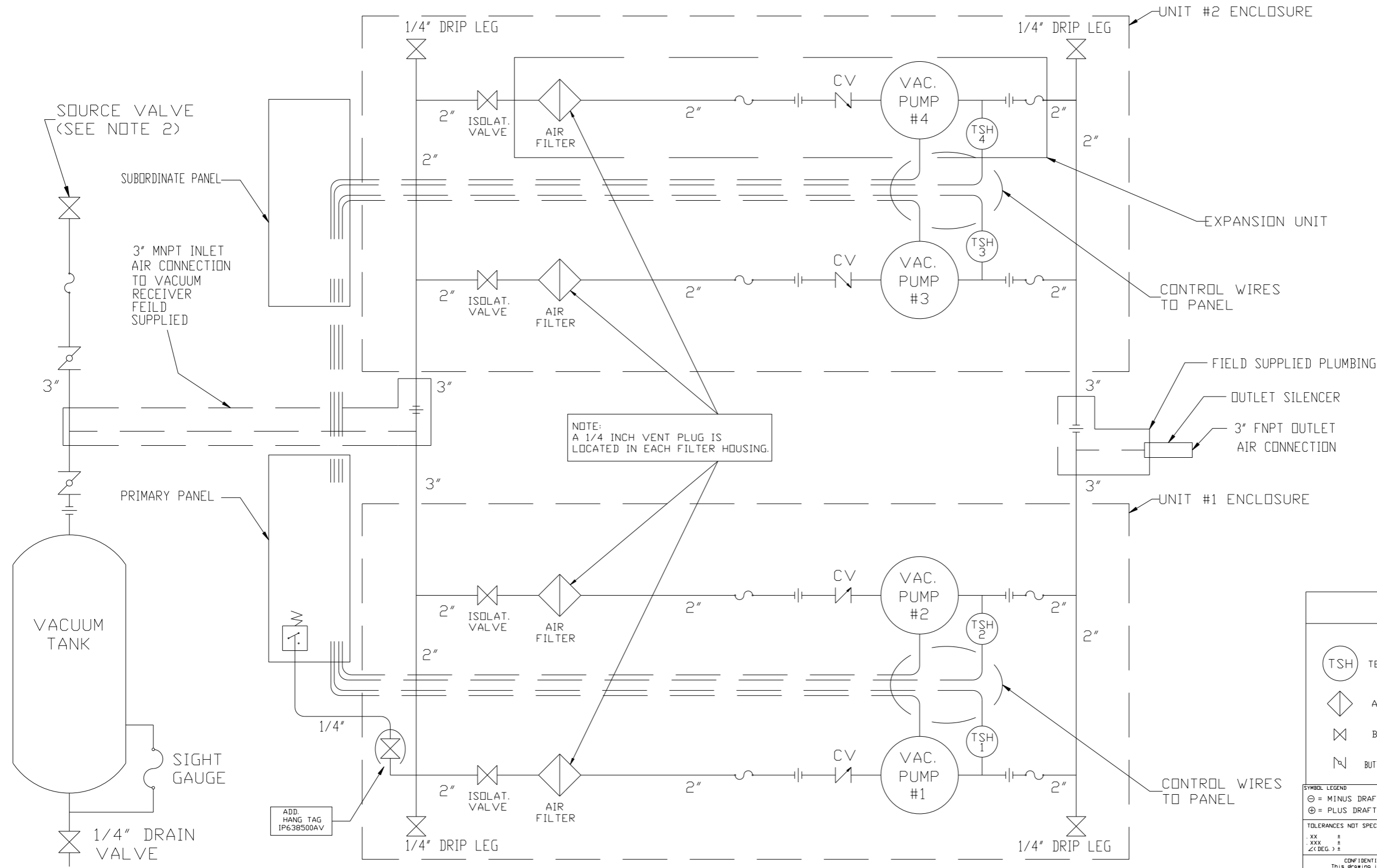
REV	ZONE	REVISION	DATE	ECN	NAME	CHKD
B-1	ALL	RELEASE TO PRODUCTION	11/28/16	PKC0099	GES	KMD



SYMBOL LEGEND		AUTOCAD		DO NOT SCALE DRAWING FOR DIMENSIONS	
⊖	= MINUS DRAFT	REL2014	LT	Sheet 1 of 2	
⊕	= PLUS DRAFT	INCH		SCALE 1:12	
⊖	= ADDITIONAL CONTROL REQ'D	Drawings to conform to the current revision of the following ANSI standards: Y14.3 Multi and sectional view dsgs, Y14.5M Dimensioning and tolerancing			
⊖	= BRINELL HARDNESS	CONFIDENTIAL DISCLOSURE: This drawing is the property of POWEREX, INC. of the SCOTT FETZER COMPANY and subject to return on demand. Its contents are confidential and must not be copied or submitted to outside parties for use or examination.			
TOLERANCES NOT SPECIFIED		.XX ±		.XXX ±	
		∠(DEG.) ±			
MATERIAL		N/A		PART NAME	
				MED CLAW ENC TRIPLEX	
				EXP4 7.5HP 200GV	
DRAWN BY		CHECKED BY		APPROVED BY	
GES		KMD		GES CT	
11/28/16		11/28/16		11/28/16 11/28/16	
DWG NO		MCET0755-EXP4		SIZE	
				D	

ncet0755-exp4

REV	ZONE	REVISION	DATE	ECN	NAME	CHKD
B-1	ALL	RELEASE TO PRODUCTION	11/28/16	PHC0099	GES	KMD



NOTE:
A 1/4 INCH VENT PLUG IS
LOCATED IN EACH FILTER HOUSING.

- NOTES:
1) TSH - TEMPERATURE SWITCH HIGH
2) PER NFPA THE SYSTEM WILL REQUIRE A SOURCE VALVE (SUPPLIED BY OTHERS).

LEGEND	
(TSH)	TEMP. SWITCH
◇	AIR FILTER
⊗	BALL VALVE
⊘	BUTTERFLY BALL VALVE
⊕	VACUUM TRANSDUCER
↗	CHECK VALVE
~	FLEX LINE
— —	UNION

SYMBOL LEGEND		= ADDITIONAL CONTROL REQ'D		Drawings to conform to the current revision of the following ANSI standards:	
⊖	MINUS DRAFT	⊕	PLUS DRAFT	⊖	BRINELL HARDNESS
TOLERANCES NOT SPECIFIED		AUTOCAD REL2008LT		DO NOT SCALE DRAWING FOR DIMENSIONS	
.xx ±		INCH		Sheet 2 of 2	
.xxx ±				SCALE 1:12	
∠(DEG.) ±					
CONFIDENTIAL DISCLOSURE This drawing is the property of POWEREX, INC. of the SCOTT FETZER COMPANY and subject to return on demand. Its contents are confidential and must not be copied or submitted to outside parties for use or examination.					
DRAWN BY		CHECKED BY		APPROVED BY	
GES		KMD		GES CT	
11/28/16		11/28/16		11/28/16	
MATERIAL		N/A		POWEREX	
PART NAME		MED CLAW ENCLOSED		150 PRODUCTION DRIVE, HARRISON, OHIO 43030 Ph: 888-769-7979 FAX: (513) 367-3125	
DWG NO		MCET0755-EXP4		SIZE D	
TRIPLEX EXP4 VACUUM				nct0755-exp4.dwg	