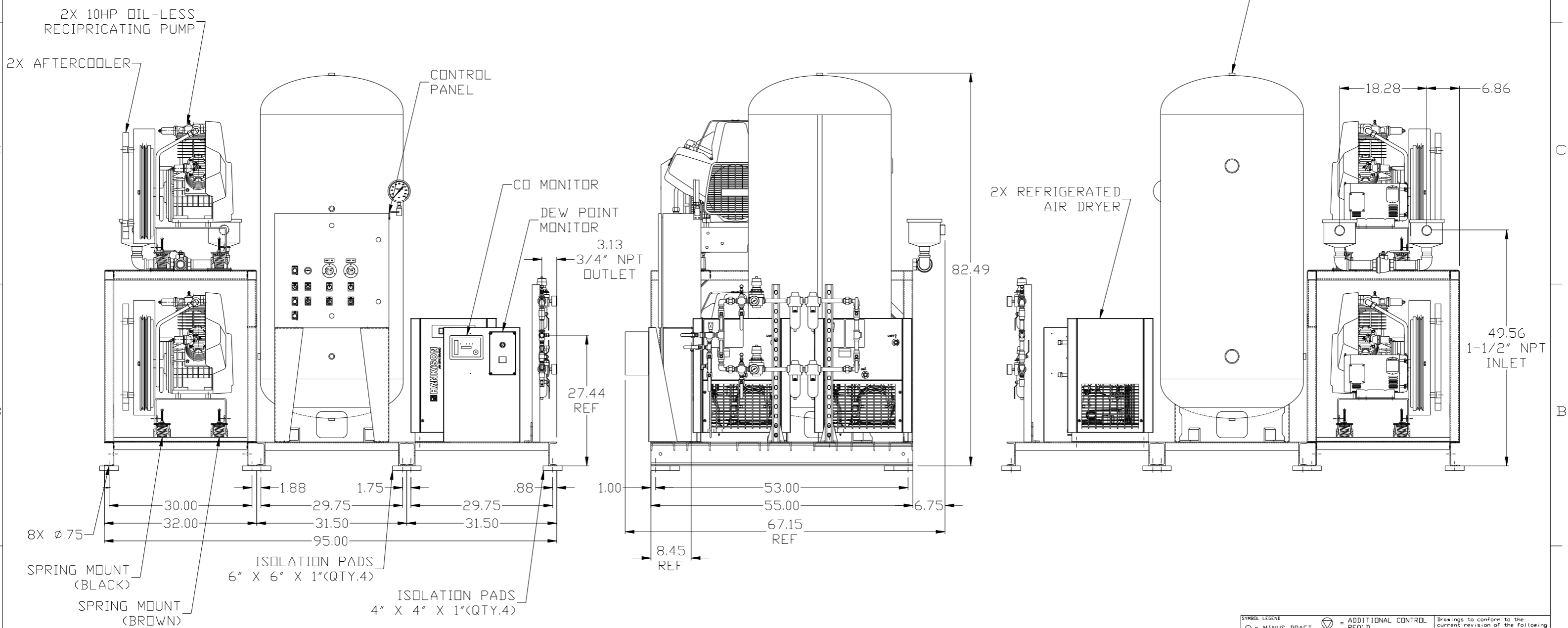


8 7 6 5 4 3 2 1

REV	ZONE	REVISION	DATE	ECN	NAME	CHKD
B-1	ALL	RELEASE TO PRODUCTION	03/28/08	21906	RSN	GES
C-1	1B-7	ADDED SPRING COLOR LOCATIONS	8/11/08	22039	GES	DMS
D-1	1 ALL 2 ALL 1 ALL	UPDATED PANEL AND TANK TO CURRENT STYLES ADDED PANS AND B.V. SIZES TO FLOW CHANGED BASE SKID TO CURRENT STYLE	9/11/08	21907	AEK	GES
E-1	1 ALL	UPDATED PUMP FRAMES	4/15/10	22407	AEK	GES
F-1	1 ALL	UPDATED ATC COMPONENT LAYOUT	9/10/10	22348	AEK	GES
G-1	2 D4	ADDED PRESSURE GAUGE SNUBBER VALVE	2/8/12	22734	AEK	DMS
H-1	2 ALL	ADDED/UPDATED FLEX LINES	10/17/14	PKEC0009	AEK	GES
J-1	2 D5	REMOVED SNUBBER VALVE	01/20/16	PKEC0133	MJD	AEK



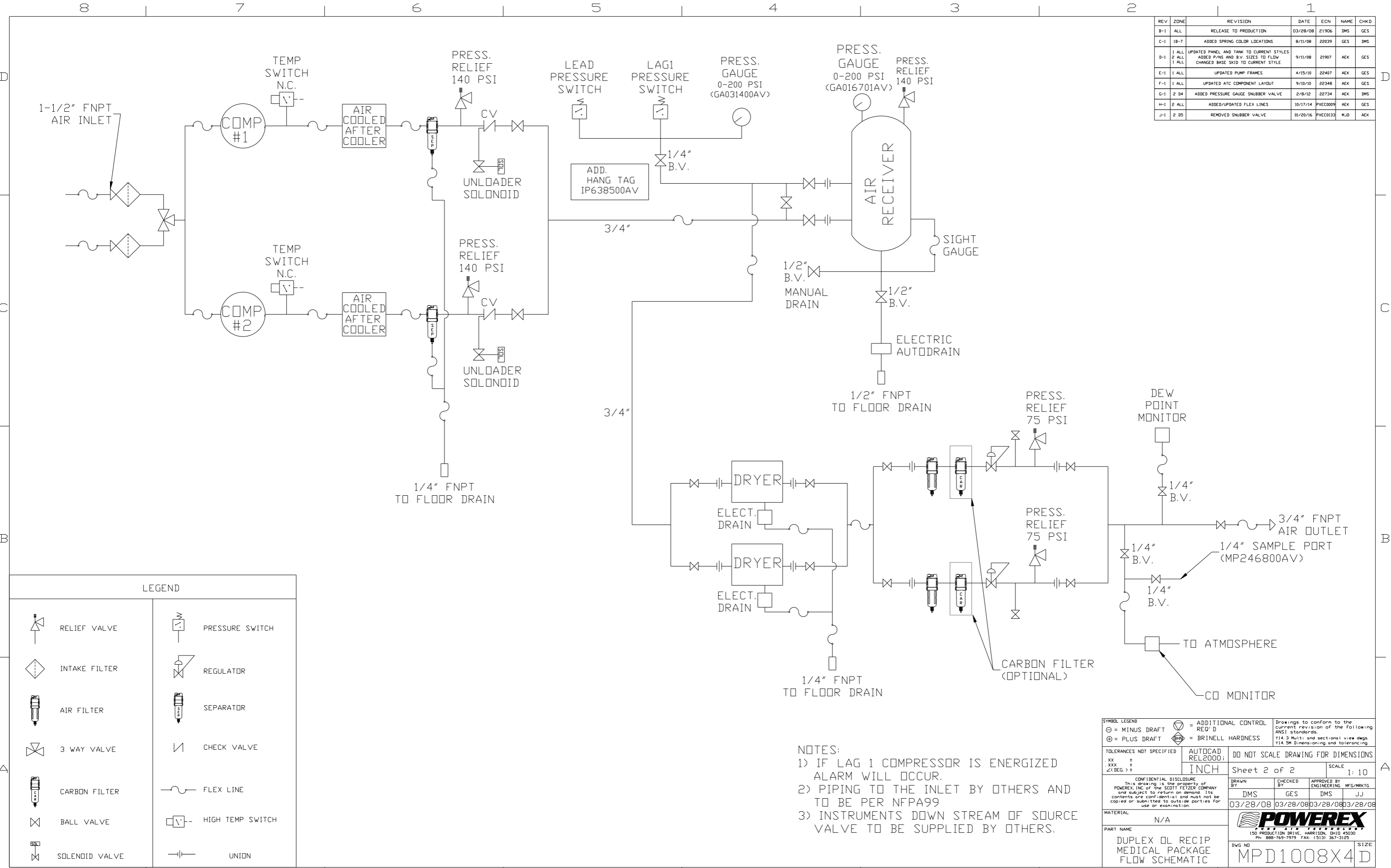
NOTE: A MINIMUM OF 24" CLEARANCE IS RECOMMENDED AROUND THE ENTIRE UNIT.

NOTE: SYSTEM DESIGNED IN COMPLIANCE WITH U.S. NFPA '99, LATEST EDITION.

SYMBOL LEGEND ⊖ = MINUS DRAFT ⊕ = PLUS DRAFT TOLERANCES NOT SPECIFIED .XX ± .XXX ± \angle (DEG.) ±		= ADDITIONAL CONTROL REQ'D = BRINELL HARDNESS		Drawings to conform to the current revision of the following ANSI standards: Y14.3 Multi and sectional view dings Y14.5M Dimensioning and tolerancing	
AUTOCAD REL2000: INCH		DO NOT SCALE DRAWING FOR DIMENSIONS Sheet 1 of 2 SCALE 1:10		CONFIDENTIAL DISCLOSURE This drawing is the property of POWEREX, INC. or the SCOTT FELTZER COMPANY and subject to return on demand. Its contents are confidential and must not be copied or submitted to outside parties for use or examination.	
DRAWN BY: DMS CHECKED BY: GES APPROVED BY: DMS, JJ DATE: 03/28/08		DATE: 03/28/08, 03/28/08, 03/28/08, 03/28/08		POWEREX 150 PRODUCTION DRIVE, HARRISON, OHIO 45030 Ph: 888-769-7979 FAX: (513) 367-3125	
MATERIAL: N/A		PART NAME: DUPLEX DILLESS RECIP. 10HP 200GAL BASEMOUNT DUPLEX REFRIGERATED		DWG NO: MPD1008X4 SIZE: D	

8 7 6 5 4 3 2 1

REV	ZONE	REVISION	DATE	ECN	NAME	CHKD
B-1	ALL	RELEASE TO PRODUCTION	03/28/08	21906	DMS	GES
C-1	1B-7	ADDED SPRING COLOR LOCATIONS	8/11/08	22039	GES	DMS
D-1	1 ALL 2 ALL	UPDATED PANEL AND TANK TO CURRENT STYLES ADDED PANS AND B.V. SIZES TO FLOW CHANGED BASE SKID TO CURRENT STYLE	9/11/08	21907	AEK	GES
E-1	1 ALL	UPDATED PUMP FRAMES	4/15/10	22407	AEK	GES
F-1	1 ALL	UPDATED ATC COMPONENT LAYOUT	9/10/10	22348	AEK	GES
G-1	2 D4	ADDED PRESSURE GAUGE SNUBBER VALVE	2/8/12	22734	AEK	DMS
H-1	2 ALL	ADDED/UPDATED FLEX LINES	10/17/14	PKEC0009	AEK	GES
J-1	2 D5	REMOVED SNUBBER VALVE	01/20/16	PKEC0133	MJD	AEK



LEGEND	
	RELIEF VALVE
	INTAKE FILTER
	AIR FILTER
	3 WAY VALVE
	CARBON FILTER
	BALL VALVE
	SOLENOID VALVE
	PRESSURE SWITCH
	REGULATOR
	SEPARATOR
	CHECK VALVE
	FLEX LINE
	HIGH TEMP SWITCH
	UNION

NOTES:
 1) IF LAG 1 COMPRESSOR IS ENERGIZED ALARM WILL OCCUR.
 2) PIPING TO THE INLET BY OTHERS AND TO BE PER NFPA99
 3) INSTRUMENTS DOWN STREAM OF SOURCE VALVE TO BE SUPPLIED BY OTHERS.

SYMBOL LEGEND		= ADDITIONAL CONTROL REQ'D		Drawings to conform to the current revision of the following ANSI standards:	
= MINUS DRAFT		= BRINELL HARDNESS		Y14.3 Multi; and sectional view dsgs. Y14.5M Dimensioning and tolerancing	
= PLUS DRAFT					
TOLERANCES NOT SPECIFIED		AUTOCAD REL2000:		DO NOT SCALE DRAWING FOR DIMENSIONS	
.XX ±		INCH		Sheet 2 of 2	
.XXX ±				SCALE 1:10	
<<DEG>> ±					
CONFIDENTIAL DISCLOSURE This drawing is the property of POWEREX, INC. OF THE SCOTT FETZER COMPANY and subject to return on demand. Its contents are confidential and must not be copied or submitted to outside parties for use or examination.					
DRAWN BY		CHECKED BY		APPROVED BY	
DMS		GES		DMS JJ	
DATE		DATE		DATE	
03/28/08		03/28/08		03/28/08	
MATERIAL N/A					
PART NAME DUPLEX OL RECIP MEDICAL PACKAGE FLOW SCHEMATIC					
DWG NO MPD1008X4D				SIZE	
				D	