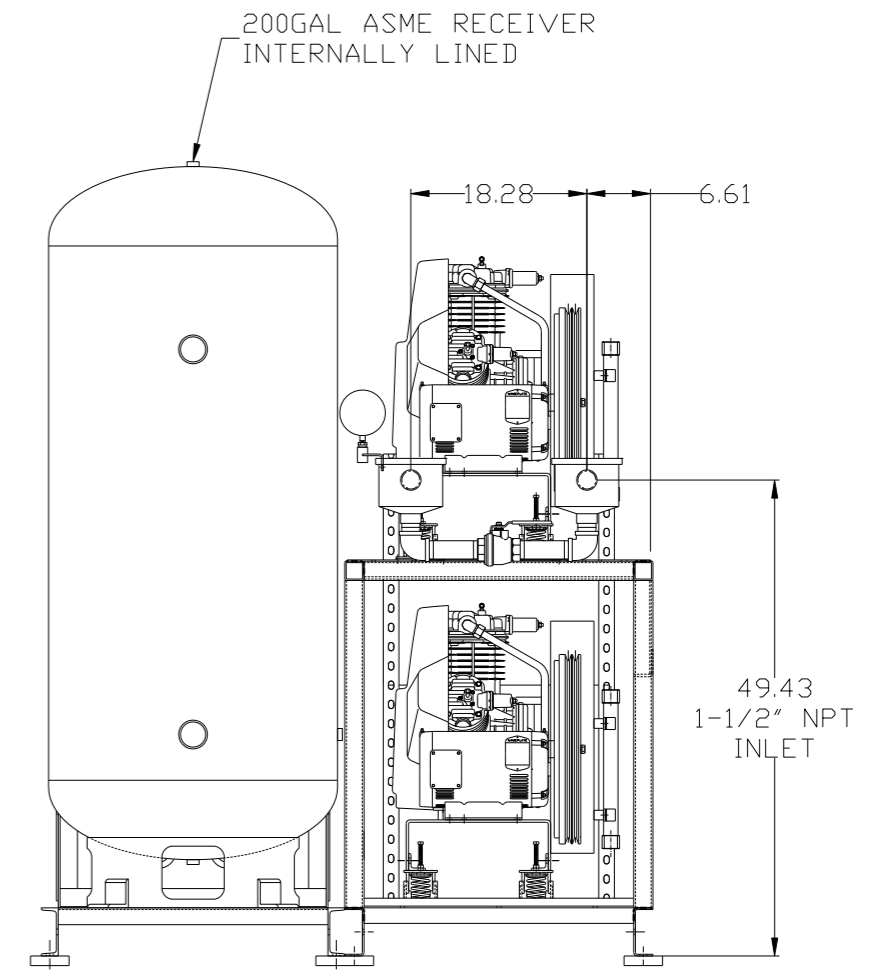
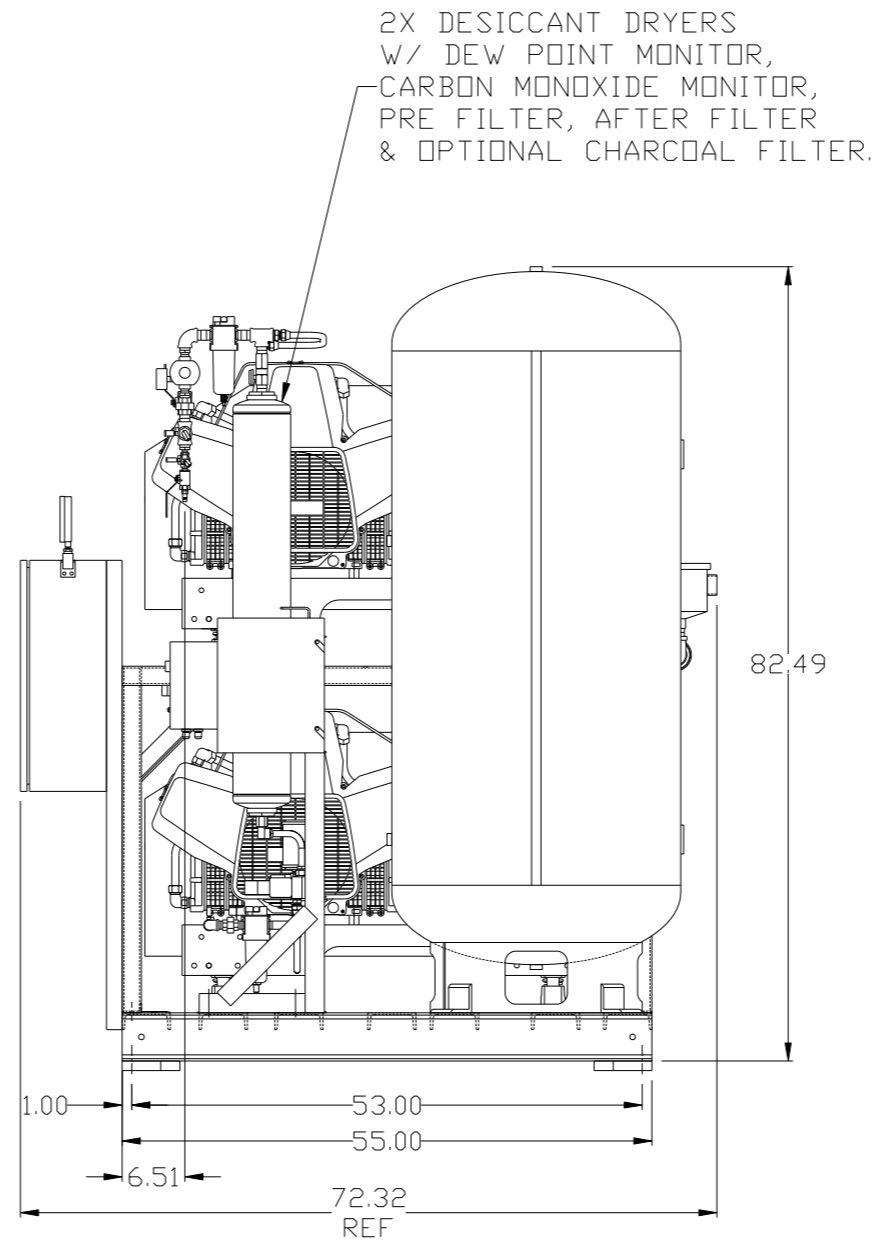
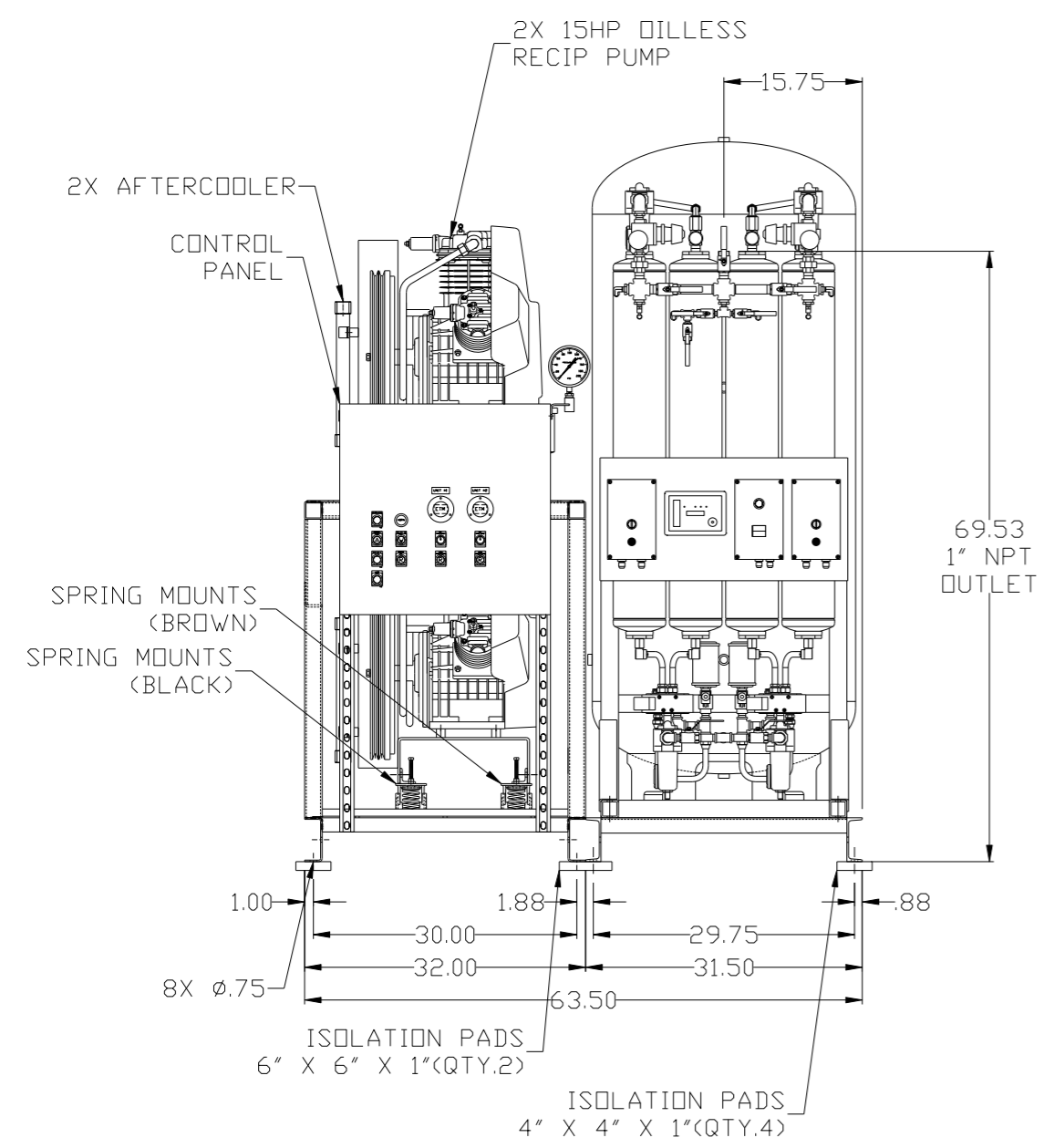


8 7 6 5 4 3 2 1

REV	ZONE	REVISION	DATE	ECN	NAME	CHKD
B-1	ALL	RELEASE TO PRODUCTION	08/09/06	21555	RSN	GES
D-1	1 ALL	ADDED NEW STYLE TANK AND PANEL	11/19/07	21669	AEK	DMS
E-1	C3.C4	ADDED ISO VALVE, HANG TAG, TANK GAUGE, 75PSI SVY	06/03/08	21907	DMS	GES
F-1	1B-7	ADDED SPRING COLOR LOCATIONS	8/11/08	22039	GES	DMS
G-1	ALL	CHANGED OUTLET FROM 3/4" NPT TO 1" NPT	11/18/08	21907	AEK	DMS
G-2	ALL	REPLACED BASE SKIDS W/ P/N - AM003602ST	12/8/08	21907	AEK	GES
G-3	ALL	ADDED SHEETS 3 & 4	12/22/08	21907	AEK	DMS
H-1	ALL	UPDATED TO NEW POWEREX DRYER REMOVED SHEETS 3 & 4	9/23/09	22120	AEK	GES
J-1	ALL	REMOVED (3) BASE SKID & RELOCATED PANEL AND DRYERS	9/24/09	22286	AEK	GES
K-1	1 ALL	UPDATED PUMP FRAMES	4/15/10	22407	AEK	GES
L-1	1 ALL	UPDATED AFTERCOOLER MOUNTING BRACKET	12/3/10	22407	AEK	GES
M-1	1 ALL	CHANGED AC FROM AM003300AV TO AM003200AV	9/20/11	22607	AEK	GES
N-1	ALL	ADDED PBM SHEETS	9/21/11	22609	AEK	GES
P-1	2 ALL	UPDATED/ADDED FLEX LINES	12/11/12	PKEC0009	AEK	DMS
Q-1	2 D4	ADDED SNUBBER VALVE	8/29/13	PKEC0030	AEK	GES
R-1	2 D4	REMOVED SNUBBER VALVE	01/21/16	PKEC0133	MJD	AEK



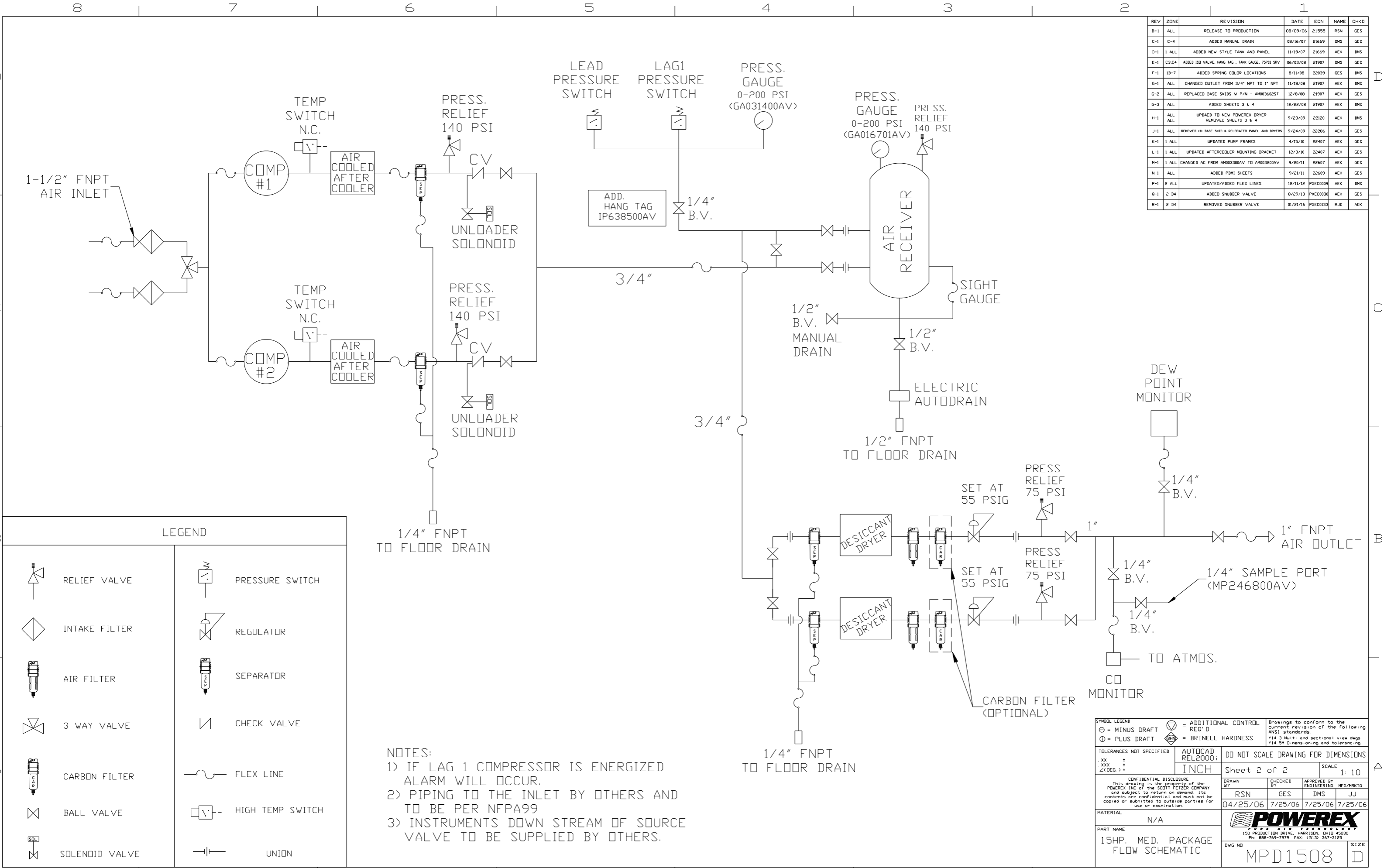
NOTE: A MINIMUM OF 24" CLEARANCE IS RECOMMENDED AROUND THE ENTIRE UNIT.

NOTE: SYSTEM DESIGNED IN COMPLIANCE WITH U.S. NFPA '99, LATEST EDITION.

SYMBOL LEGEND ⊖ = MINUS DRAFT ⊕ = PLUS DRAFT \angle (DEG) ±		= ADDITIONAL CONTROL REQ'D = BRINELL HARDNESS		Drawings to conform to the current revision of the following ANSI standards: Y14.3 Multi and sectional view dgs. Y14.5M Dimensioning and tolerancing	
TOLERANCES NOT SPECIFIED .XX ± .XXX ± \angle (DEG) ±		AUTOCAD REL2000:		DO NOT SCALE DRAWING FOR DIMENSIONS Sheet 1 of 2 SCALE 1:10	
CONFIDENTIAL DISCLOSURE This drawing is the property of the POWEREX, INC of the SCOTT FETZER COMPANY and subject to return on demand. Its contents are confidential and must not be copied or submitted to outside parties for use or examination.					
DRAWN BY RSN		CHECKED BY GES		APPROVED BY ENGINEERING MFG/MKTG DMS JJ	
MATERIAL N/A		DATE 04/25/06		DATE 7/25/06 7/25/06 7/25/06	
PART NAME DUPLEX DILLESS 15HP, 200GAL. BASEMOUNT DUPLEX DESICCANT		DWG NO MPD1508		SIZE D	

8 7 6 5 4 3 2 1

REV	ZONE	REVISION	DATE	ECN	NAME	CHKD
B-1	ALL	RELEASE TO PRODUCTION	08/09/06	21555	RSN	GES
C-1	C-4	ADDED MANUAL DRAIN	08/16/07	21669	DMS	GES
D-1	1 ALL	ADDED NEW STYLE TANK AND PANEL	11/19/07	21669	AEK	DMS
E-1	C3,C4	ADDED ISO VALVE, HANG TAG, TANK GAUGE, 75PSI SRV	06/03/08	21907	DMS	GES
F-1	1B-7	ADDED SPRING COLOR LOCATIONS	8/11/08	22039	GES	DMS
G-1	ALL	CHANGED OUTLET FROM 3/4" NPT TO 1" NPT	11/18/08	21907	AEK	DMS
G-2	ALL	REPLACED BASE SKIDS W P/N - AM00360EST	12/8/08	21907	AEK	GES
G-3	ALL	ADDED SHEETS 3 & 4	12/22/08	21907	AEK	DMS
H-1	ALL	UPDATED TO NEW POWEREX DRYER REMOVED SHEETS 3 & 4	9/23/09	22120	AEK	DMS
J-1	ALL	REMOVED (D) BASE SKID & RELOCATED PANEL AND DRYERS	9/24/09	22286	AEK	GES
K-1	1 ALL	UPDATED PUMP FRAMES	4/15/10	22407	AEK	GES
L-1	1 ALL	UPDATED AFTERCOOLER MOUNTING BRACKET	12/3/10	22407	AEK	GES
M-1	1 ALL	CHANGED AC FROM AM003300AV TO AM003200AV	9/20/11	22607	AEK	GES
N-1	ALL	ADDED P&MI SHEETS	9/21/11	22609	AEK	GES
P-1	2 ALL	UPDATED/ADDED FLEX LINES	12/11/12	PXEC0009	AEK	DMS
Q-1	2 D4	ADDED SNUBBER VALVE	8/29/13	PXEC0030	AEK	GES
R-1	2 D4	REMOVED SNUBBER VALVE	01/21/16	PXEC0133	MJD	AEK



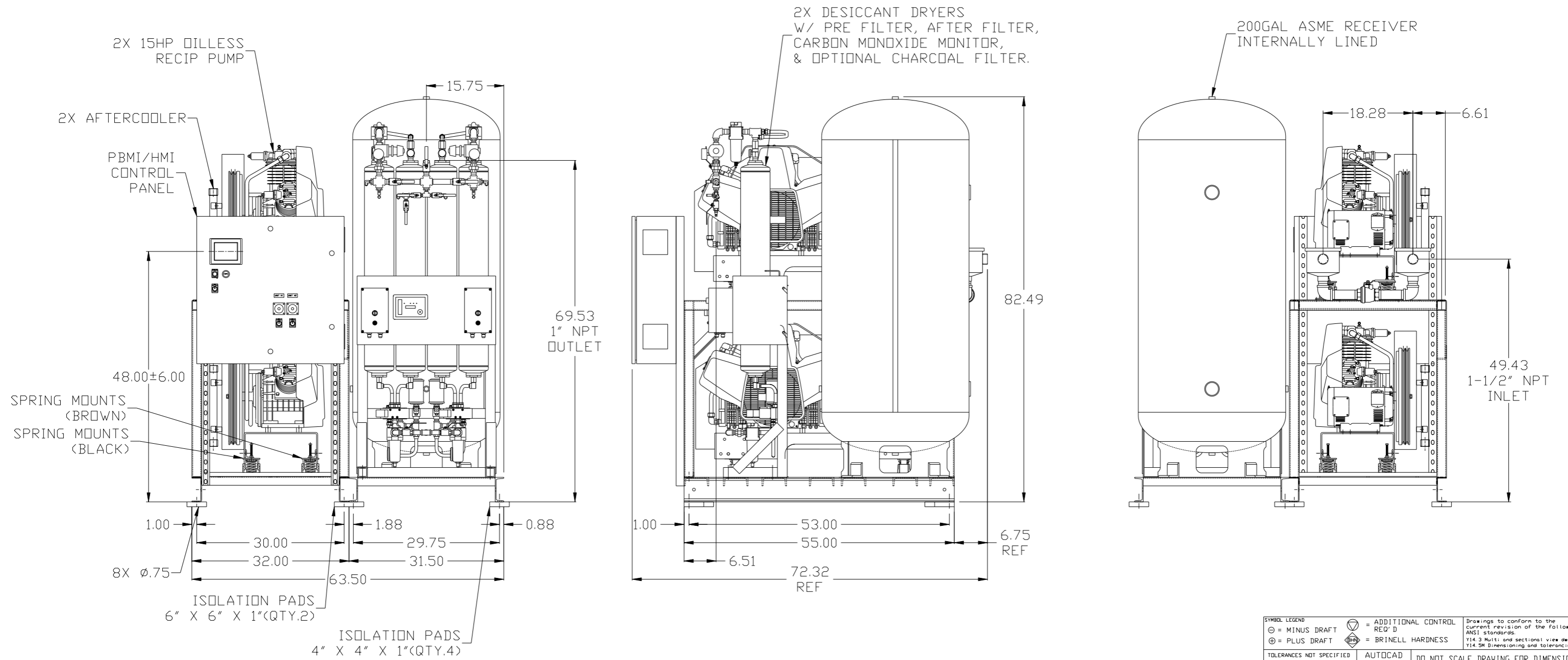
LEGEND

	RELIEF VALVE		PRESSURE SWITCH
	INTAKE FILTER		REGULATOR
	AIR FILTER		SEPARATOR
	3 WAY VALVE		CHECK VALVE
	CARBON FILTER		FLEX LINE
	BALL VALVE		HIGH TEMP SWITCH
	SOLENOID VALVE		UNION

- NOTES:
- 1) IF LAG 1 COMPRESSOR IS ENERGIZED ALARM WILL OCCUR.
 - 2) PIPING TO THE INLET BY OTHERS AND TO BE PER NFPA99
 - 3) INSTRUMENTS DOWN STREAM OF SOURCE VALVE TO BE SUPPLIED BY OTHERS.

SYMBOL LEGEND			ADDITIONAL CONTROL REQ'D	Drawings to conform to the current revision of the following ANSI standards:
	MINUS DRAFT		BRINELL HARDNESS	Y14.3 Multi and sectional view dsgs. Y14.5M Dimensioning and tolerancing
TOLERANCES NOT SPECIFIED		AUTOCAD REL2000:		DO NOT SCALE DRAWING FOR DIMENSIONS
.XX ±		INCH		Sheet 2 of 2
.XXX ±				SCALE 1:10
<Z(DEG) ±				
CONFIDENTIAL DISCLOSURE This drawing is the property of the POWEREX, INC. of the SCOTT FETZER COMPANY and subject to return on demand. Its contents are confidential and must not be copied or submitted to outside parties for use or examination.				
DRAWN BY		CHECKED BY	APPROVED BY	DATE
RSN		GES	DMS	JJ
04/25/06		7/25/06	7/25/06	7/25/06
MATERIAL N/A				
PART NAME 15HP. MED. PACKAGE FLOW SCHEMATIC				
DWG NO MPD1508				SIZE D

REV	ZONE	REVISION	DATE	ECN	NAME	CHKD
N-1	ALL	ADDED PBMI SHEETS	9/21/11	22609	AEK	GES
P-1	2 ALL	UPDATED/ADDED FLEX LINES	12/11/12	PKEC0009	AEK	DMS
Q-1	2 D4	ADDED SNUBBER VALVE	8/29/13	PKEC0030	AEK	GES
R-1	2 D4	REMOVED SNUBBER VALVE	01/21/16	PKEC0133	MJD	AEK

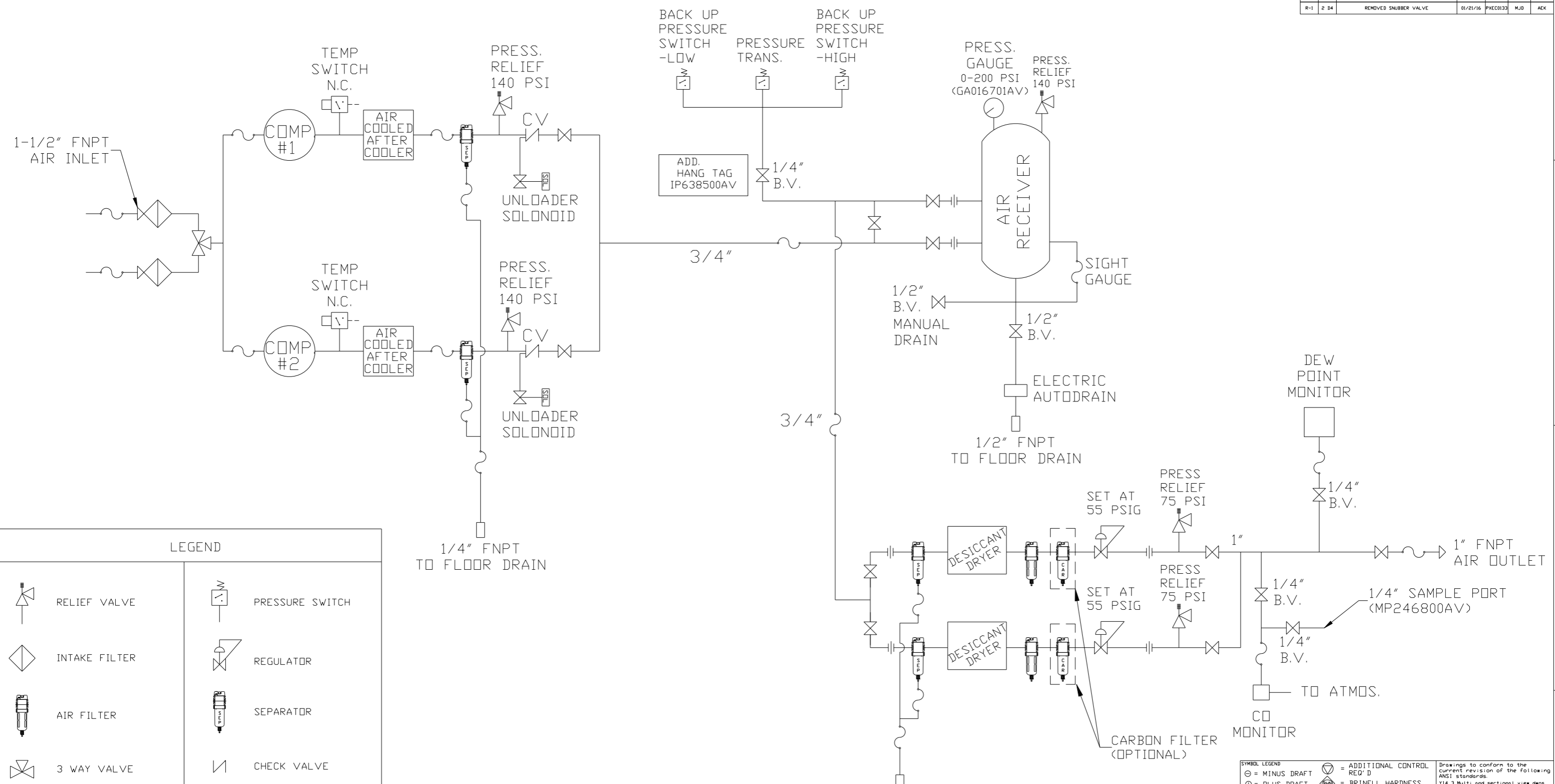


NOTE: A MINIMUM OF 24" CLEARANCE IS RECOMMENDED AROUND THE ENTIRE UNIT.

NOTE: SYSTEM DESIGNED IN COMPLIANCE WITH U.S. NFPA '99, LATEST EDITION.

SYMBOL LEGEND		= ADDITIONAL CONTROL REQ'D		Drawings to conform to the current revision of the following ANSI standards:	
\ominus	MINUS DRAFT	\oplus	PLUS DRAFT	Y14.3	Multi and sectional view dgs.
\oplus	PLUS DRAFT	HRC	BRINELL HARDNESS	Y14.5M	Dimensioning and tolerancing
TOLERANCES NOT SPECIFIED		AUTOCAD REL2008 LT		DO NOT SCALE DRAWING FOR DIMENSIONS	
.XX	±	INCH		Sheet 1 of 2	SCALE 1:10
.XXX	±	CONFIDENTIAL DISCLOSURE			
\angle (DEG)	±	This drawing is the property of the POWEREX, INC of the SCOTT FETZER COMPANY and subject to return on demand. Its contents are confidential and must not be copied or submitted to outside parties for use or examination.			
DRAWN BY		CHECKED BY		APPROVED BY	
AEK		GES		DMS RJR	
9/21/11		9/21/11		9/21/11 9/21/11	
MATERIAL		N/A		 150 PRODUCTION DRIVE, HARRISON, OHIO 45030 Ph 888-769-7979 FAX (513) 367-3125	
PART NAME		DUPLX OILLESS 15HP, 200GAL. BASEMOUNT DUPLX DESICCANT		DWG NO MPD1508	
				SIZE D	

REV	ZONE	REVISION	DATE	ECN	NAME	CHKD
N-1	ALL	ADDED P&MI SHEETS	9/21/11	22609	AEK	GES
P-1	2 ALL	UPDATED/ADDED FLEX LINES	12/11/12	PXEC0009	AEK	DMS
Q-1	2 D4	ADDED SNUBBER VALVE	8/29/13	PXEC0030	AEK	GES
R-1	2 D4	REMOVED SNUBBER VALVE	01/21/16	PXEC0133	MJD	AEK



LEGEND

	RELIEF VALVE		PRESSURE SWITCH
	INTAKE FILTER		REGULATOR
	AIR FILTER		SEPARATOR
	3 WAY VALVE		CHECK VALVE
	CARBON FILTER		FLEX LINE
	BALL VALVE		HIGH TEMP SWITCH
	SOLENOID VALVE		UNION

- NOTES:
- 1) IF LAG 1 COMPRESSOR IS ENERGIZED ALARM WILL OCCUR.
 - 2) PIPING TO THE INLET BY OTHERS AND TO BE PER NFPA99
 - 3) INSTRUMENTS DOWN STREAM OF SOURCE VALVE TO BE SUPPLIED BY OTHERS.

SYMBOL LEGEND		= ADDITIONAL CONTROL REQ'D		Drawings to conform to the current revision of the following ANSI standards	
= MINUS DRAFT		= BRINELL HARDNESS		Y14.3 Multi and sectional view dgs. Y14.5M Dimensioning and tolerancing	
= PLUS DRAFT		AUTOCAD REL2008 LT		DO NOT SCALE DRAWING FOR DIMENSIONS	
TOLERANCES NOT SPECIFIED		INCH		Sheet 2 of 2	
.XX ±				SCALE 1:10	
.XXX ±					
<DEG> ±					
CONFIDENTIAL DISCLOSURE This drawing is the property of the POWEREX, INC. of the SCOTT FETZER COMPANY and subject to return on demand. Its contents are confidential and must not be copied or submitted to outside parties for use or examination.					
DRAWN BY		CHECKED BY		APPROVED BY	
AEK		GES		DMS RJR	
9/21/11		9/21/11		9/21/11 9/21/11	
MATERIAL N/A					
PART NAME 15HP. MED. PACKAGE FLOW SCHEMATIC					
DWG NO MPD1508				SIZE D	