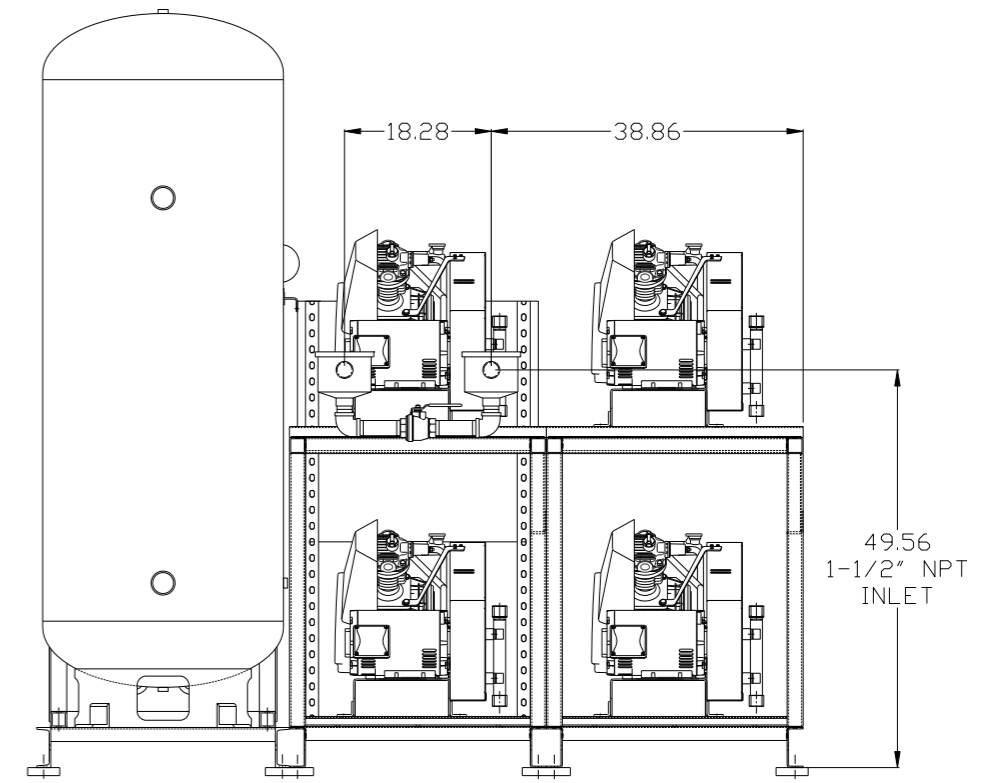
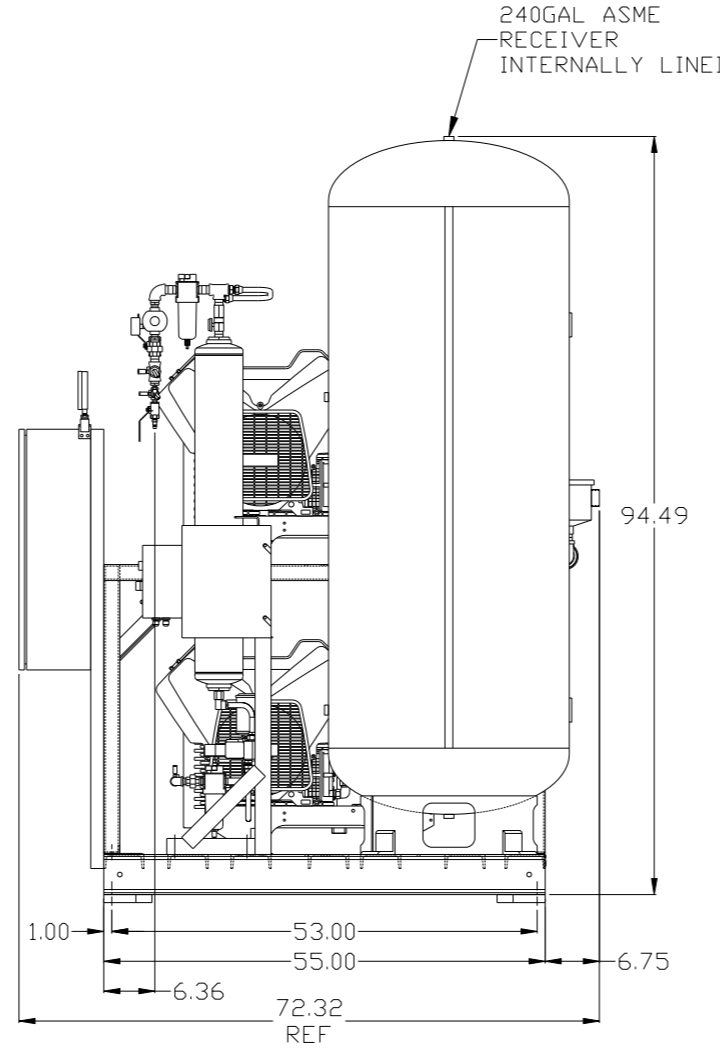
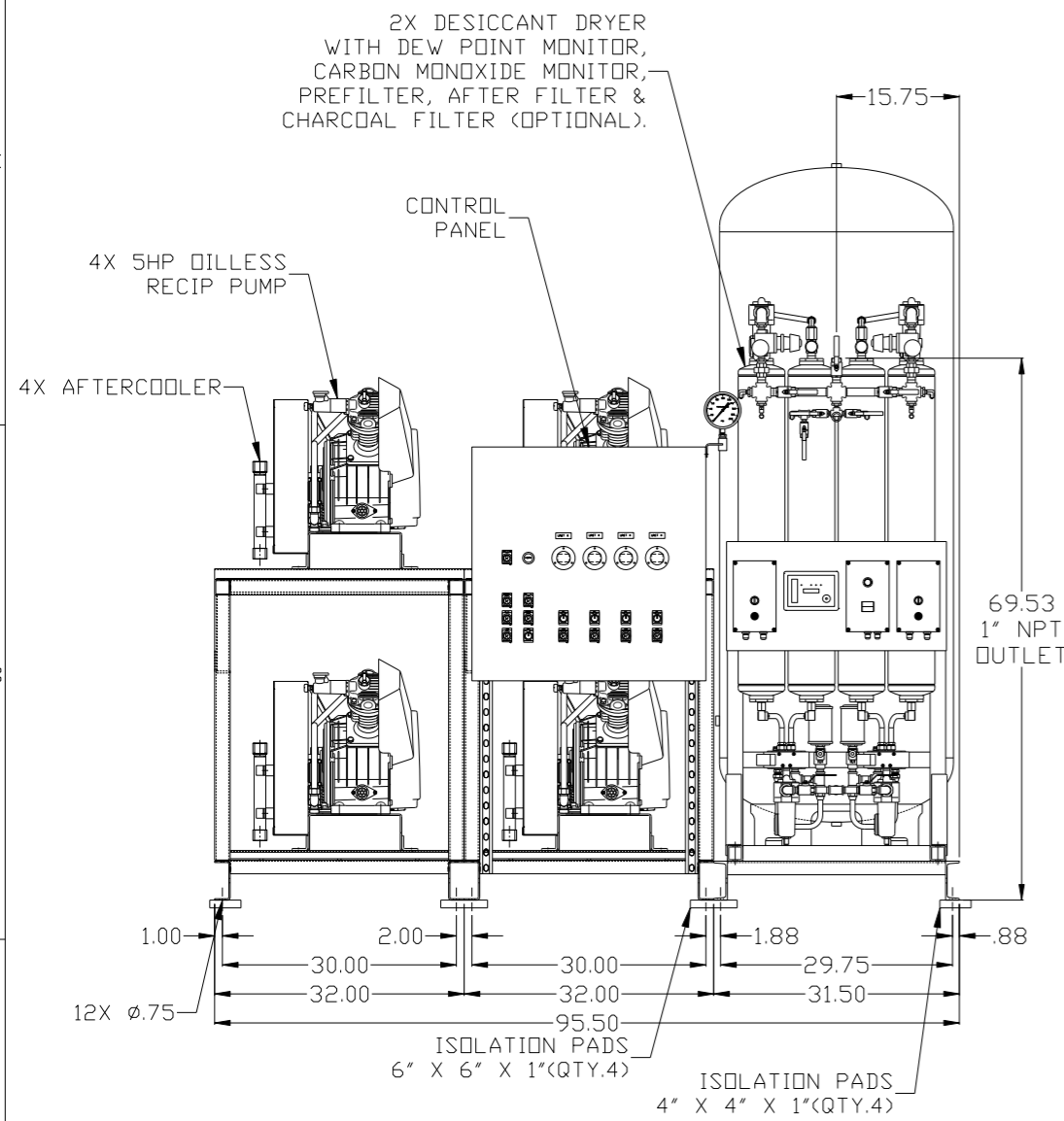


REV	ZONE	REVISION	DATE	ECN	NAME	CHKD
B-1	ALL	RELEASE TO PRODUCTION	8/19/09	22126	AEK	GES
C-1	1 ALL	REMOVED (3) BASE SKID & RELOCATED PANEL AND DRYERS	9/24/09	22286	AEK	GES
D-1	1 ALL	UPDATED TO CURRENT FRAMES	11/30/10	22407	AEK	GES
E-1	ALL	ADDED P&ID SHEETS	9/19/11	22609	AEK	GES
F-1	2 ALL	ADDED/UPDATED FLEX LINES	12/12/13	PXEC0030	AEK	GES
G-1	1 ALL	CHANGED TO NEW BG DESIGN	7/14/16	PXEC0132	AEK	GES

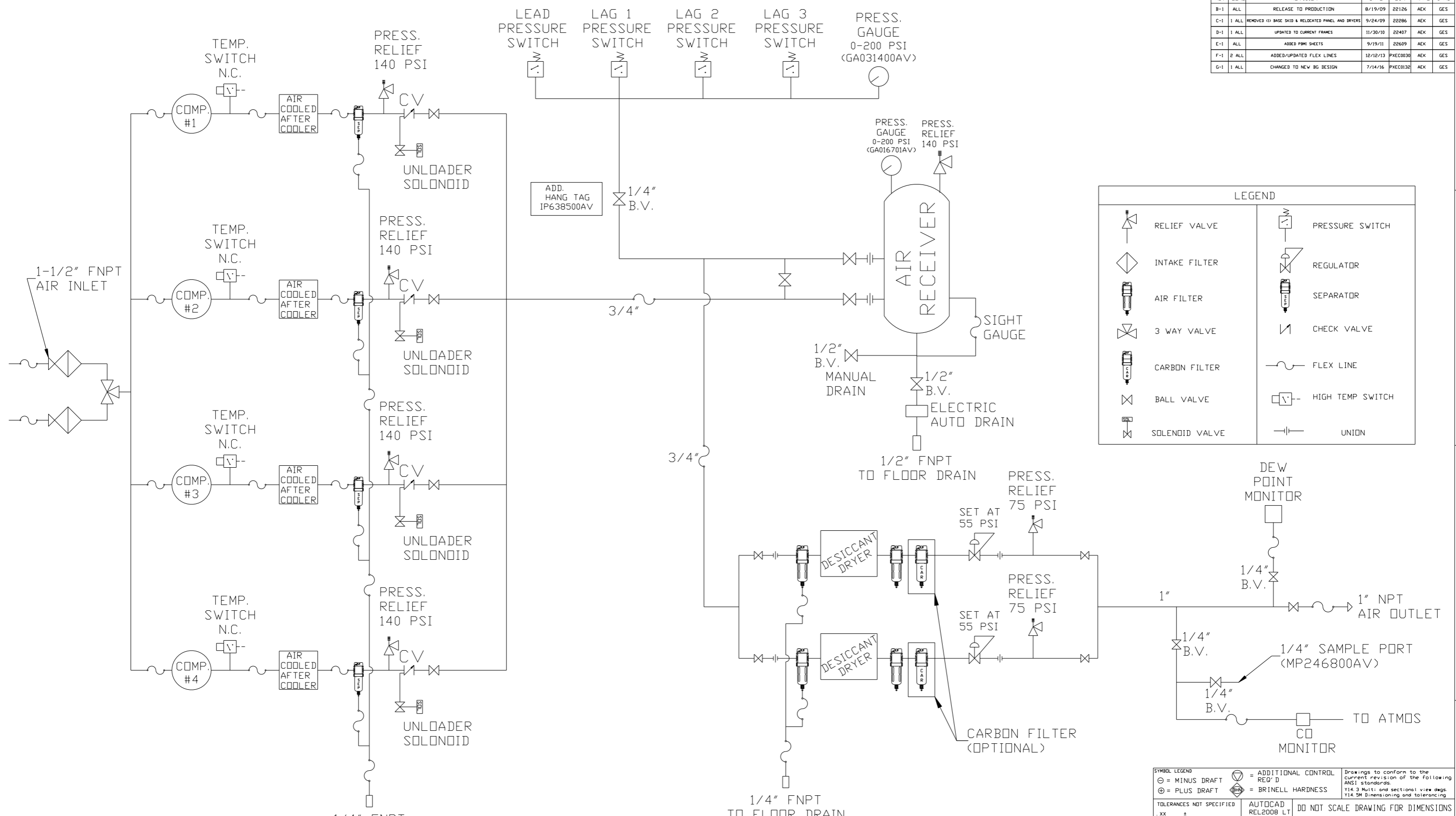


NOTE: A MINIMUM OF 24" CLEARANCE IS RECOMMENDED AROUND THE ENTIRE UNIT.

NOTE: SYSTEM DESIGNED IN COMPLIANCE WITH U.S. NFPA '99, LATEST EDITION.

SYMBOL LEGEND ⊖ = MINUS DRAFT ⊕ = PLUS DRAFT TOLERANCES NOT SPECIFIED .XX ± .XXX ± <<DEG> ±		= ADDITIONAL CONTROL REQ'D = BRINELL HARDNESS		Drawings to conform to the current revision of the following ANSI standards: Y14.3 Multi and sectional view dgs. Y14.5M Dimensioning and tolerancing	
AUTOCAD REL2008 LT INCH		DO NOT SCALE DRAWING FOR DIMENSIONS Sheet 1 of 2 SCALE 1:12		CONFIDENTIAL DISCLOSURE This drawing is the property of POWEREX, INC. of the SCOTT FELTZER COMPANY and subject to return on demand. Its contents are confidential and must not be copied or submitted to outside parties for use or examination.	
DRAWN BY AEK		CHECKED BY GES		APPROVED BY ENGINEERING MFG/MKTG DMS JJ	
MATERIAL N/A		DATE 8/19/09		DATE 8/19/09 8/19/09 8/19/09	
PART NAME QUADPLEX OILLESS RECIP. 5HP. 240GAL. BASEMOUNT DUPLEX DESICCANT		DWG NO MPQ0508X5		SIZE D	

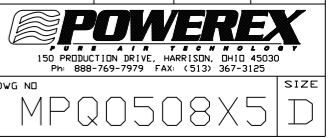
REV	ZONE	REVISION	DATE	ECN	NAME	CHKD
B-1	ALL	RELEASE TO PRODUCTION	8/19/09	22126	AEK	GES
C-1	1 ALL	REMOVED (3) BASE SKID & RELOCATED PANEL AND DRIVERS	9/24/09	22286	AEK	GES
D-1	1 ALL	UPDATED TO CURRENT FRAMES	11/20/10	22407	AEK	GES
E-1	ALL	ADDED P&ID SHEETS	9/19/11	22609	AEK	GES
F-1	2 ALL	ADDED/UPDATED FLEX LINES	12/12/13	PXEC0030	AEK	GES
G-1	1 ALL	CHANGED TO NEW BG DESIGN	7/14/16	PXEC0132	AEK	GES



	RELIEF VALVE		PRESSURE SWITCH
	INTAKE FILTER		REGULATOR
	AIR FILTER		SEPARATOR
	3 WAY VALVE		CHECK VALVE
	CARBON FILTER		FLEX LINE
	BALL VALVE		HIGH TEMP SWITCH
	SOLENOID VALVE		UNION

- NOTES:
- 1) IF LAG 3 COMPRESSOR IS ENERGIZED ALARM WILL OCCUR.
  - 2) PIPING TO THE INLET BY OTHERS AND TO BE PER NFPA99
  - 3) INSTRUMENTS DOWN STREAM OF SOURCE VALVE TO BE SUPPLIED BY OTHERS.

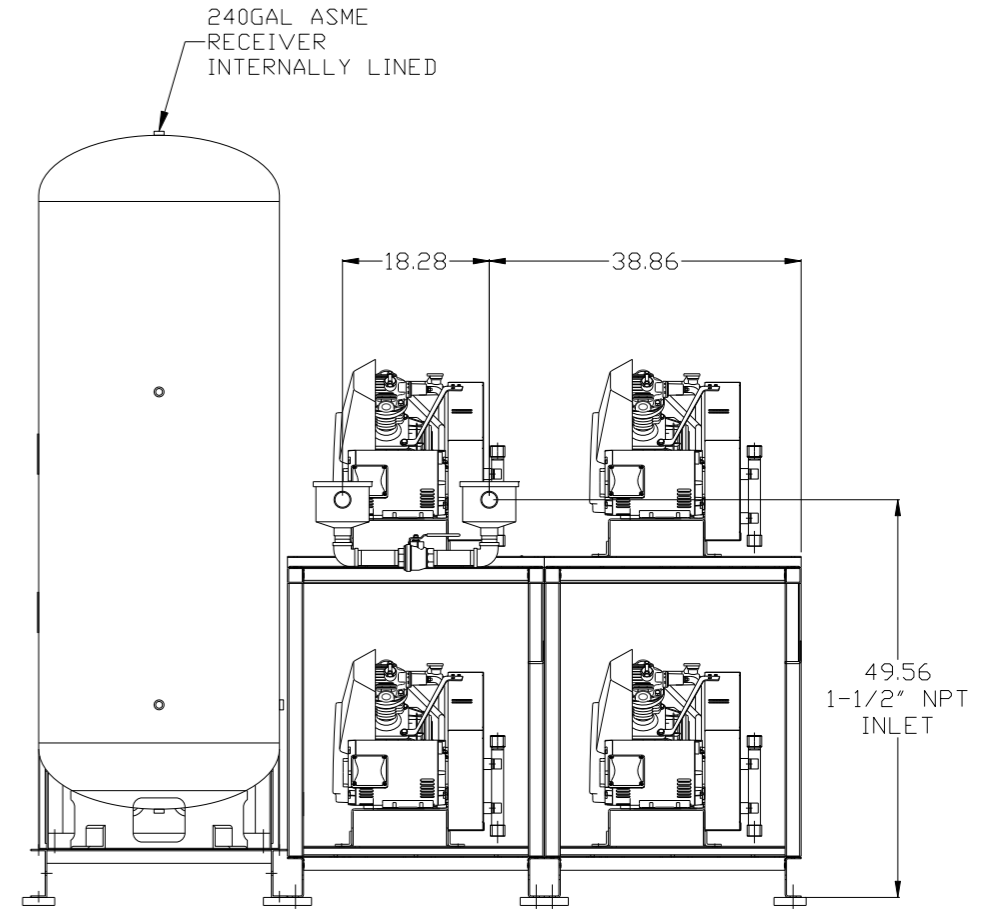
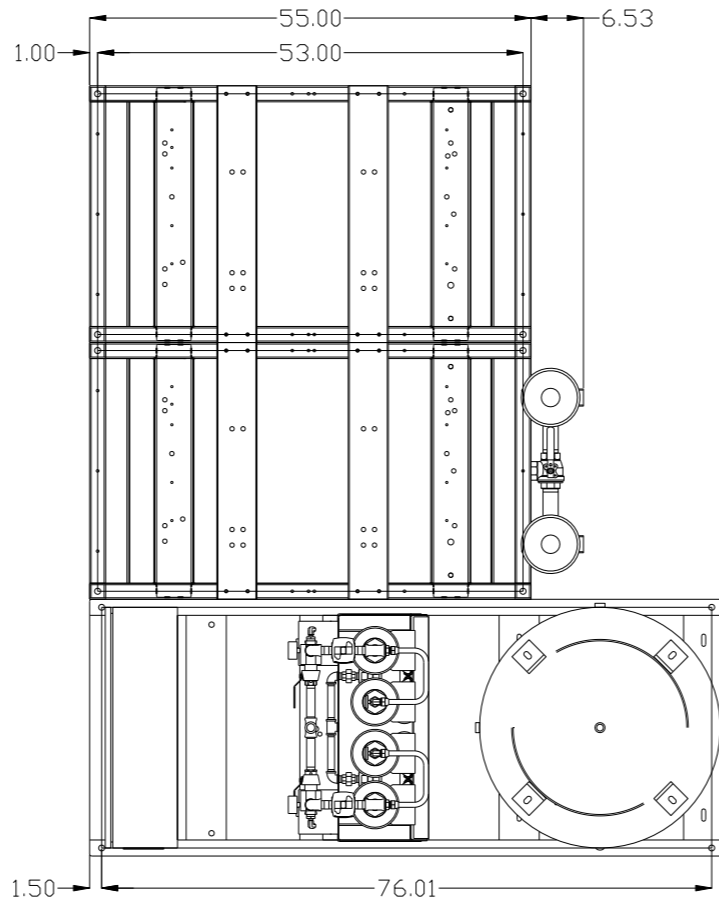
SYMBOL LEGEND ⊖ = MINUS DRAFT ⊕ = PLUS DRAFT		⊕ = ADDITIONAL CONTROL REQ'D ⊕ = BRINELL HARDNESS		Drawings to conform to the current revision of the following ANSI standards: Y14.3 Multi and sectional view dgs. Y14.5M Dimensioning and tolerancing	
TOLERANCES NOT SPECIFIED .XX ± .XXX ± <math>\angle</math>(DEG.) ±		AUTOCAD REL2008 LT INCH		DO NOT SCALE DRAWING FOR DIMENSIONS Sheet 2 of 2 SCALE 1:12	
CONFIDENTIAL DISCLOSURE This drawing is the property of POWEREX, INC. OF THE SCOTT FETZER COMPANY and subject to return on demand. Its contents are confidential and must not be copied or submitted to outside parties for use or examination.		DRAWN BY AEK		CHECKED BY GES	
MATERIAL N/A		APPROVED BY DMS		MFG/MKTG JJ	
PART NAME QUAD RECIP MED PACKAGE FLOW SCHEMATIC		DATE 8/19/09		DATE 8/19/09	
DWG NO MPQ0508X5		DATE 8/19/09		DATE 8/19/09	



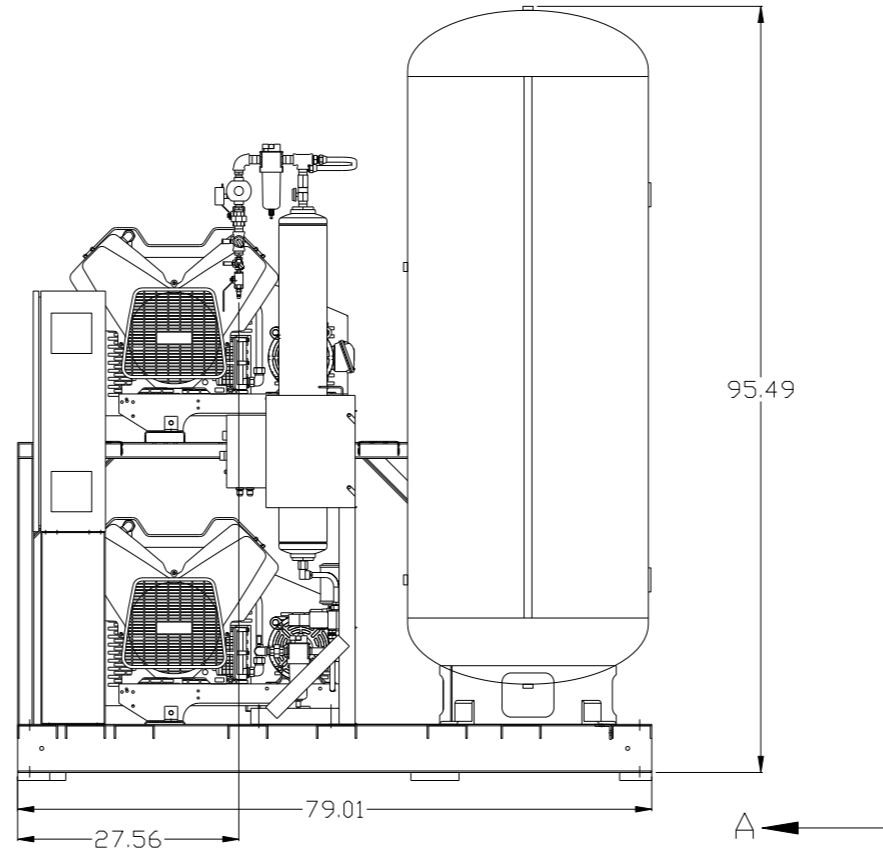
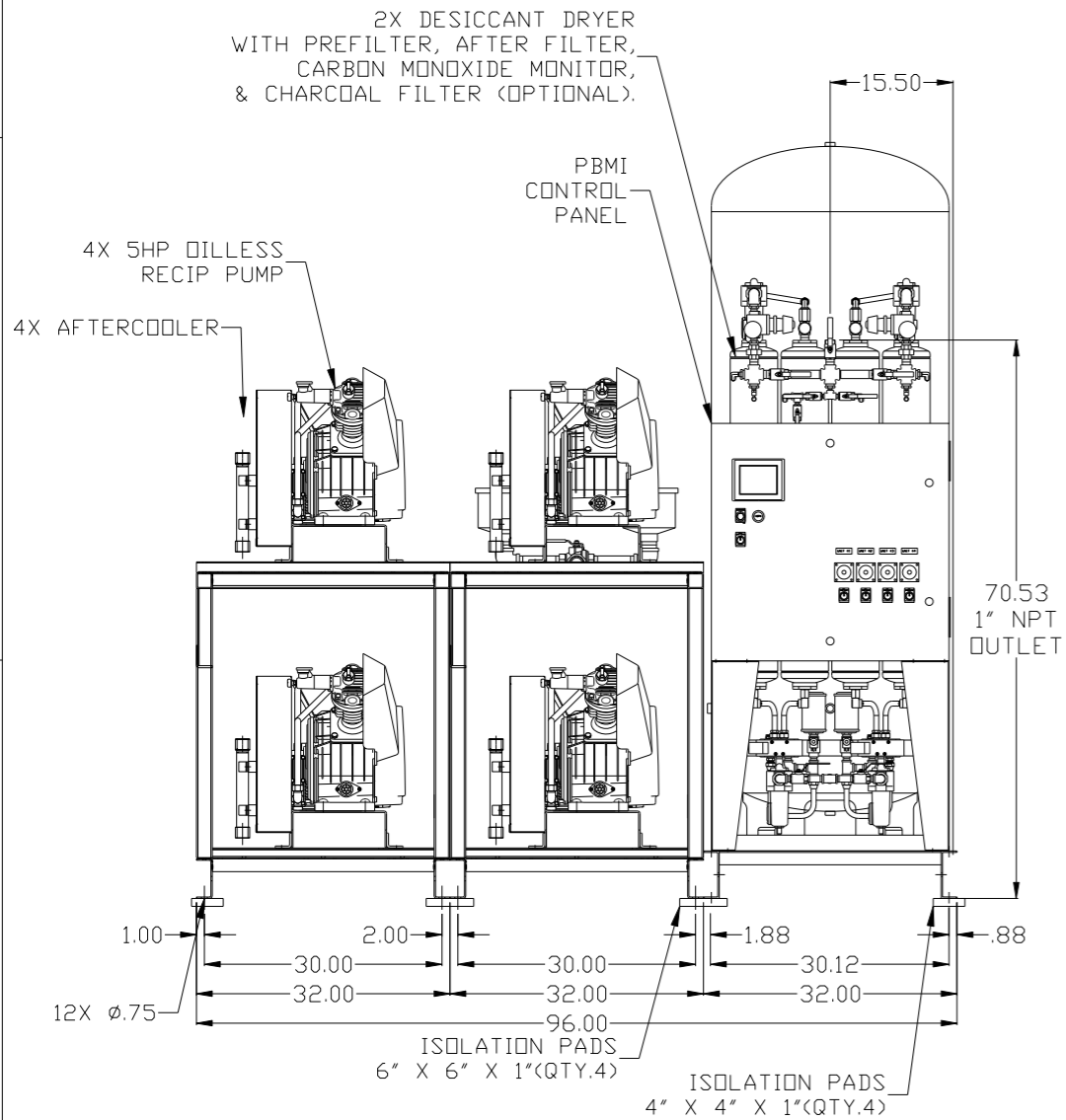
8 | 7 | 6 | 5 | 4 | 3 | 2 | 1

NOTE: A MINIMUM OF 24" CLEARANCE IS RECOMMENDED AROUND THE ENTIRE UNIT.

REV	ZONE	REVISION	DATE	ECN	NAME	CHKD
E-1	ALL	ADDED PBMI SHEETS	9/19/11	22609	AEK	GES
F-1	2 ALL	ADDED/UPDATED FLEX LINES	12/12/13	PXEC0030	AEK	GES
G-1	1 ALL	CHANGED TO NEW BG DESIGN	7/14/16	PXEC0132	AEK	GES



VIEW A-A

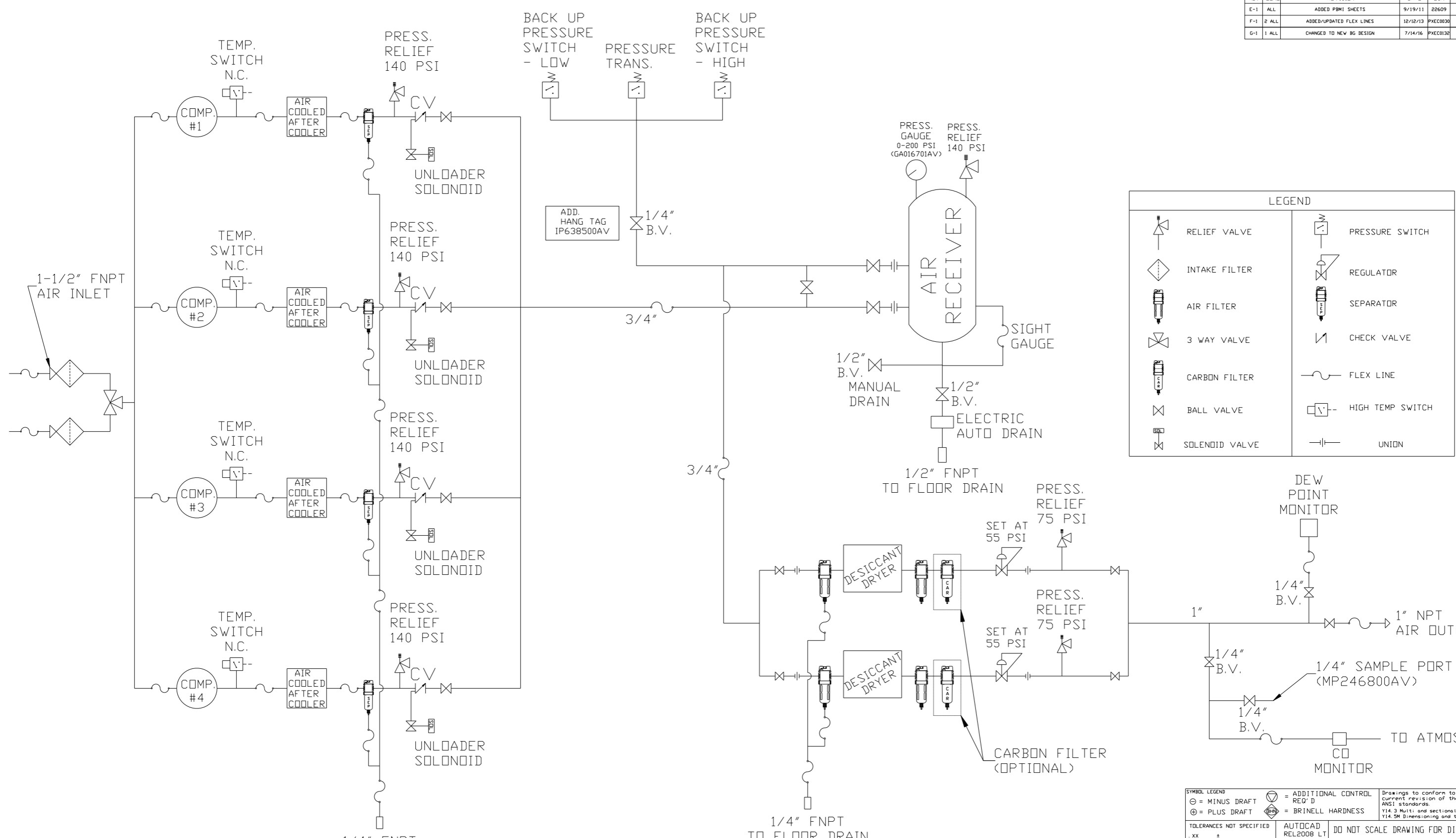


NOTE: SYSTEM DESIGNED IN COMPLIANCE WITH U.S. NFPA '99, LATEST EDITION.

SYMBOL LEGEND		= ADDITIONAL CONTROL REQ'D		Drawings to conform to the current revision of the following ANSI standards:	
⊖	MINUS DRAFT	⊕	PLUS DRAFT	Y14.3	Multi and sectional view dgs.
⊕	PLUS DRAFT	⊖	MINUS DRAFT	Y14.5M	Dimensioning and tolerancing
TOLERANCES NOT SPECIFIED		AUTOCAD REL2008 LT		DO NOT SCALE DRAWING FOR DIMENSIONS	
.XX	±	INCH		Sheet 1 of 2	
.XXX	±			SCALE 1:12	
<Z<DEG>	±				
CONFIDENTIAL DISCLOSURE: This drawing is the property of POWEREX, INC. of the SCOTT FELTZER COMPANY and subject to return on demand. Its contents are confidential and must not be copied or submitted to outside parties for use or examination.					
DRAWN BY		CHECKED BY		APPROVED BY	
AEK		GES		DMS RJR	
9/19/11		9/19/11		9/19/11 9/19/11	
MATERIAL		N/A		POWEREX	
PART NAME		QUADPLEX OILLESS RECIP. 5HP. 240GAL. BASEMOUNT DUPLEX DESICCANT		150 PRODUCTION DRIVE, HARRISON, OHIO 45030 Ph: 888-769-7979 FAX: (513) 367-3125	
DWG NO		MPQ0508X5		SIZE D	

8 | 7 | 6 | 5 | 4 | 3 | 2 | 1

REV	ZONE	REVISION	DATE	ECN	NAME	CHKD
E-1	ALL	ADDED PBM1 SHEETS	9/19/11	22609	AEK	GES
F-1	2 ALL	ADDED/UPDATED FLEX LINES	12/12/13	PXEC0030	AEK	GES
G-1	1 ALL	CHANGED TO NEW BG DESIGN	7/14/16	PXEC0132	AEK	GES



	RELIEF VALVE		PRESSURE SWITCH
	INTAKE FILTER		REGULATOR
	AIR FILTER		SEPARATOR
	3 WAY VALVE		CHECK VALVE
	CARBON FILTER		FLEX LINE
	BALL VALVE		HIGH TEMP SWITCH
	SOLENOID VALVE		UNION

- NOTES:
- 1) IF LAG 3 COMPRESSOR IS ENERGIZED ALARM WILL OCCUR.
  - 2) PIPING TO THE INLET BY OTHERS AND TO BE PER NFPA99
  - 3) INSTRUMENTS DOWN STREAM OF SOURCE VALVE TO BE SUPPLIED BY OTHERS.

SYMBOL LEGEND ⊖ = MINUS DRAFT ⊕ = PLUS DRAFT .XX ± .XXX ± <math>\angle</math>(DEG.) ±		= ADDITIONAL CONTROL REQ'D = BRINELL HARDNESS	Drawings to conform to the current revision of the following ANSI standards: Y14.3 Multi and sectional view dgs. Y14.5M Dimensioning and tolerancing
TOLERANCES NOT SPECIFIED	AUTOCAD REL2008 LT	DO NOT SCALE DRAWING FOR DIMENSIONS	
INCH		Sheet 2 of 2	SCALE 1:12
CONFIDENTIAL DISCLOSURE This drawing is the property of POWEREX, INC. of the SCOTT FETZER COMPANY and subject to return on demand. Its contents are confidential and must not be copied or submitted to outside parties for use or examination.			
DRAWN BY	CHECKED BY	APPROVED BY	
AEK	GES	DMS RJR	
9/19/11	9/19/11	9/19/11 9/19/11	
MATERIAL N/A		 150 PRODUCTION DRIVE, HARRISON, OHIO 45030 Ph: 888-769-7979 FAX: (513) 367-3125	
PART NAME QUAD RECIP MED PACKAGE FLOW SCHEMATIC		DWG NO MPQ0508X5	SIZE D