

UTILITY DATA, MODEL KNWA00-C/H

OPERATING AND MAX PRESSURE	NAME PLATE POWER	HEAT REJECTION TO AIR	APPROX. POWER CONSUMPTION	APPROX. SHIPPING WEIGHT
PSIG	HP	BTU/MIN	KW	LB
125	40	1,930	37	2,480

UTILITY DATA, MODEL KNWA00-D/L

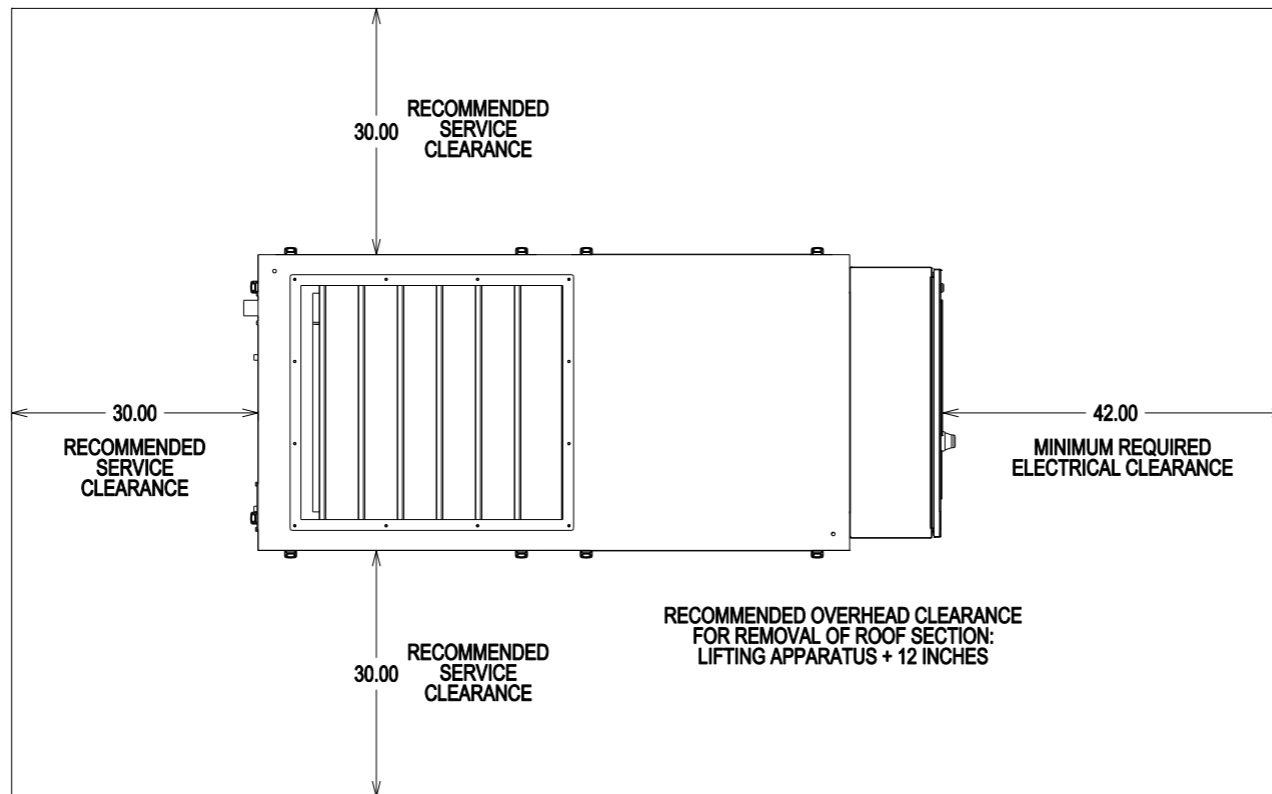
OPERATING AND MAX PRESSURE	NAME PLATE POWER	HEAT REJECTION TO AIR	APPROX. POWER CONSUMPTION	APPROX. SHIPPING WEIGHT
PSIG	HP	BTU/MIN	KW	LB
100	40	2250	43	2,480

ELECTRICAL REQUIREMENTS: 3Ø, 60 Hz, 480 VOLTS

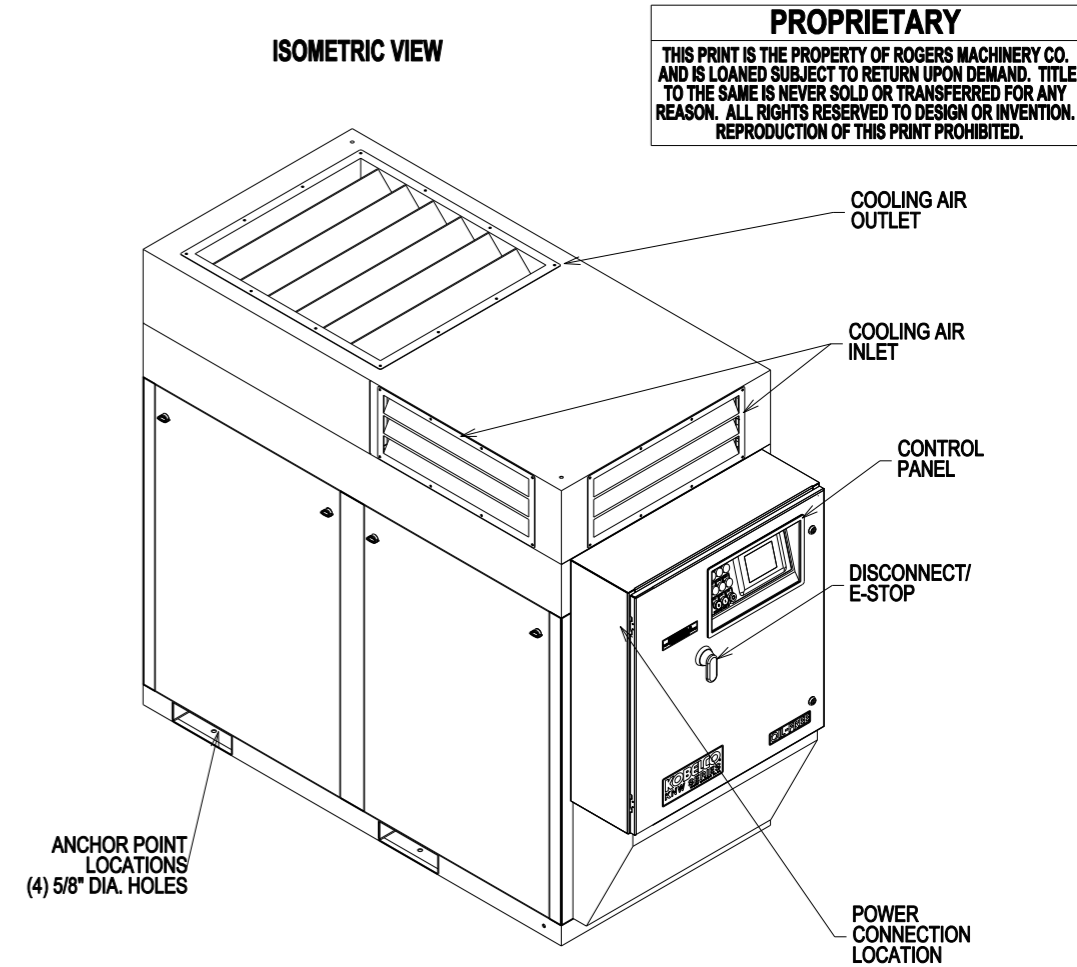
NOTES:
 1. PERFORMANCE DATA SHOWN IS FOR STANDARD CONDITIONS OF AMBIENT PRESSURE 14.5 PSIA, AMBIENT TEMPERATURE 80°F, RELATIVE HUMIDITY 60%. OPERATION IN OTHER CONDITIONS WILL AFFECT PERFORMANCE.
 2. VALUES WILL VARY ±4% FOR CAPACITY AND ±5% FOR SPECIFIC POWER.

NOT SUITABLE FOR OUTDOOR WEATHER.

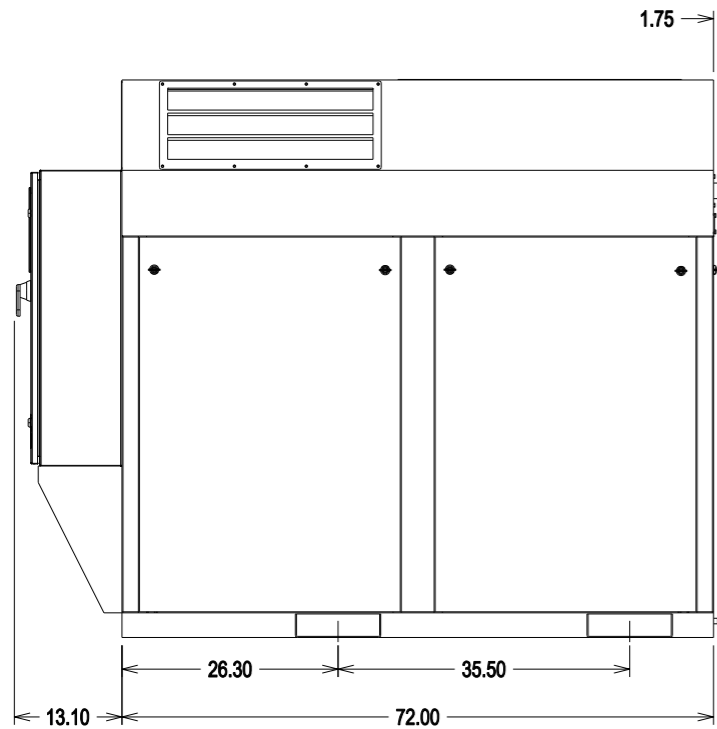
TOP VIEW WITH RECOMMENDED SERVICE CLEARANCES



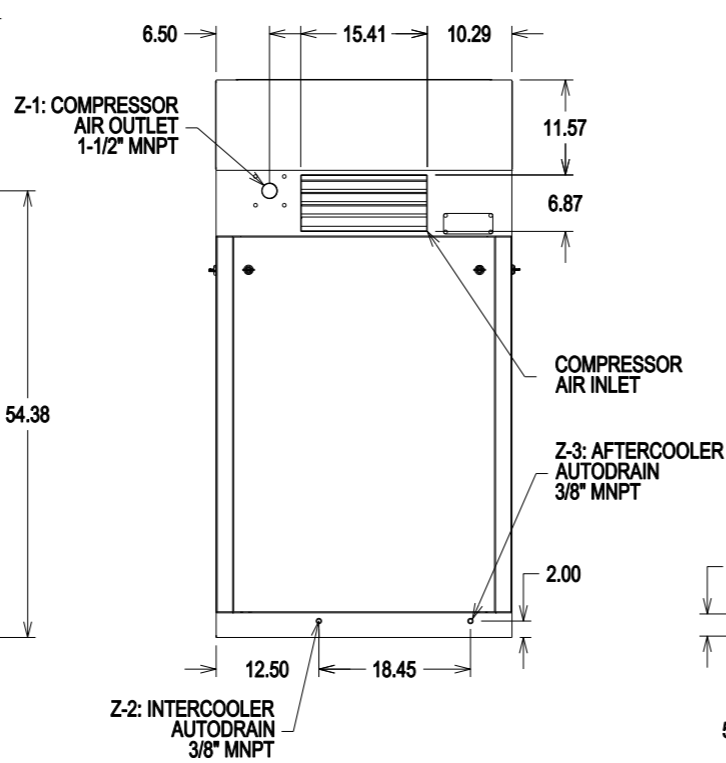
ISOMETRIC VIEW



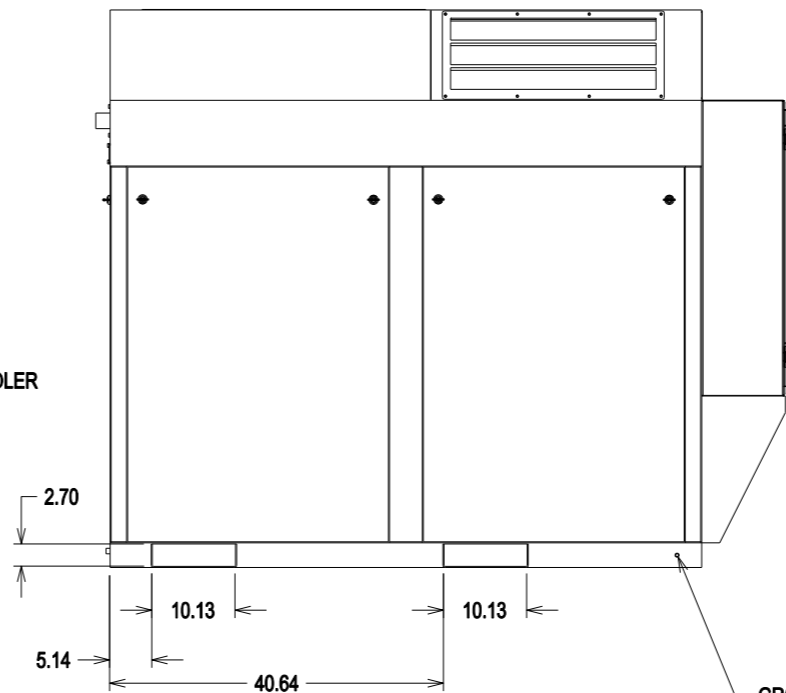
PROPRIETARY
 THIS PRINT IS THE PROPERTY OF ROGERS MACHINERY CO. AND IS LOANED SUBJECT TO RETURN UPON DEMAND. TITLE TO THE SAME IS NEVER SOLD OR TRANSFERRED FOR ANY REASON. ALL RIGHTS RESERVED TO DESIGN OR INVENTION. REPRODUCTION OF THIS PRINT PROHIBITED.



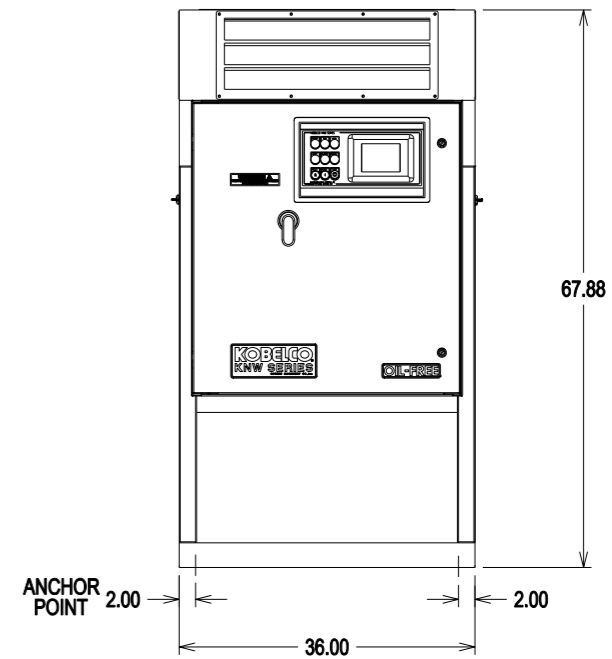
RIGHT VIEW



BACK VIEW



LEFT VIEW



FRONT VIEW

DIMENSIONS IN INCHES



ROGERS MACHINERY COMPANY, INC.
 CORPORATE ENGINEERING
 14650 S.W. 72ND AVENUE
 PORTLAND, OREGON 97224
 www.rogers-machinery.com

REV	DATE	BY	DESCRIPTION

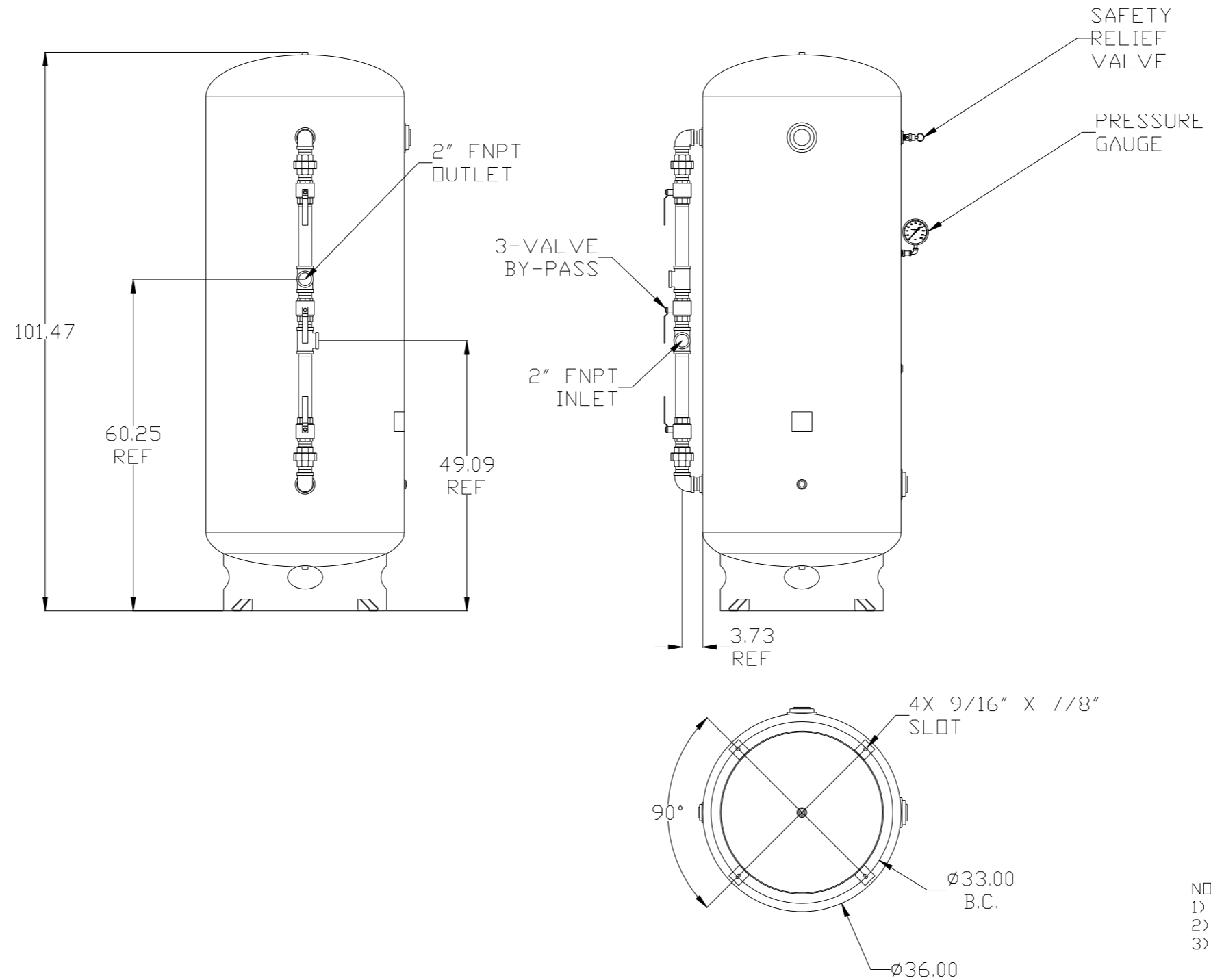
DRAWN	G.E. WILKER	4DEC13
CHECKED		
SIZE	B	SCALE 1:24
SERIAL#	POWEREX - TBD	

COMPRESSOR ASSEMBLY
 KOBELCO KNW SERIES AIR COMPRESSOR
 MODEL KNWA00-C/H or D/L, AIR-COOLED
 WYE-DELTA STARTER
 STANDARD ASSEMBLY

DRAWING NUMBER
K40345A.0
 SHEET 1 OF 1

8	7	6	5	4	3	2	1
GALLONS	SIZE	DESIGN PRESSURE	WEIGHT lbs.	DESCRIPTION			
400	36 x 101	165 PSI	880	ASME VERTICAL INDUSTRIAL w/BASE RING			

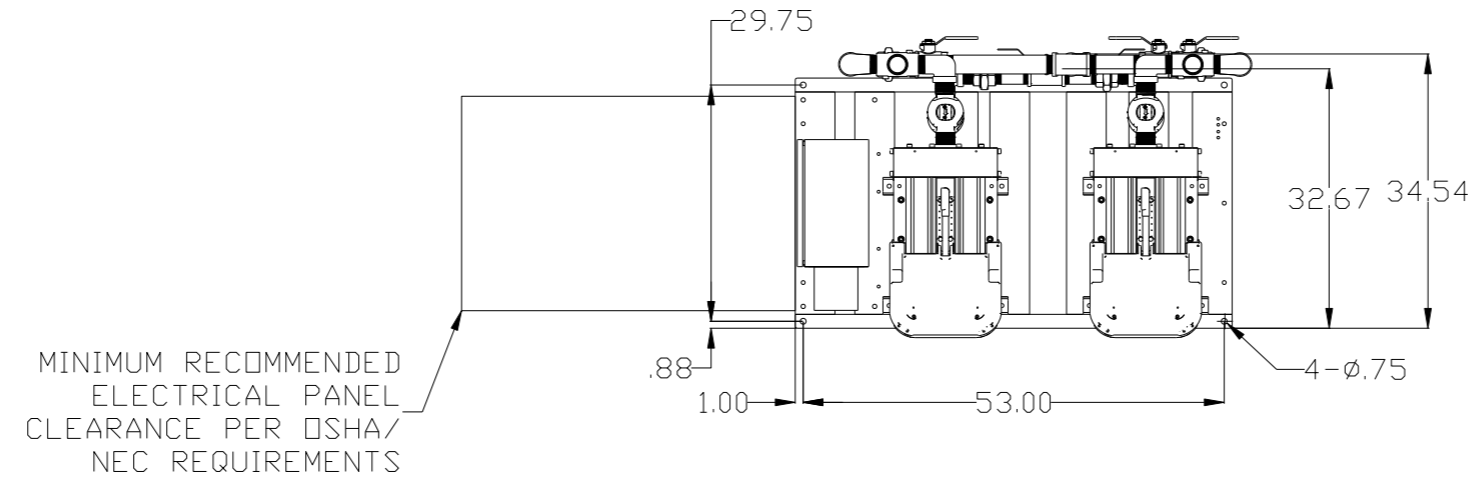
REV	ZONE	REVISION	DATE	ECN	NAME	CHKD
A-1	ALL	SUBMITTAL DRAWINGS	8/7/13	PXEC0092	RK	AEK
B-1	ALL	RELEASE FOR PRODUCTION	8/7/13	PXEC0092	RK	AEK
C-1	ALL	CHANGED TANK PSI FROM 200 TO 165	04/26/18	PXEC0229	DMS	GES



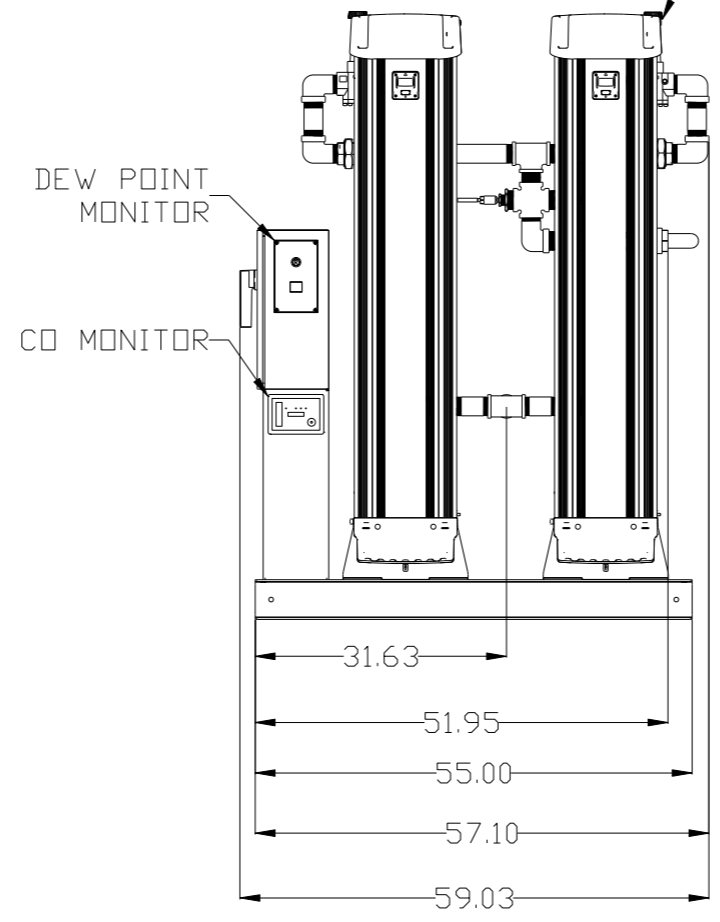
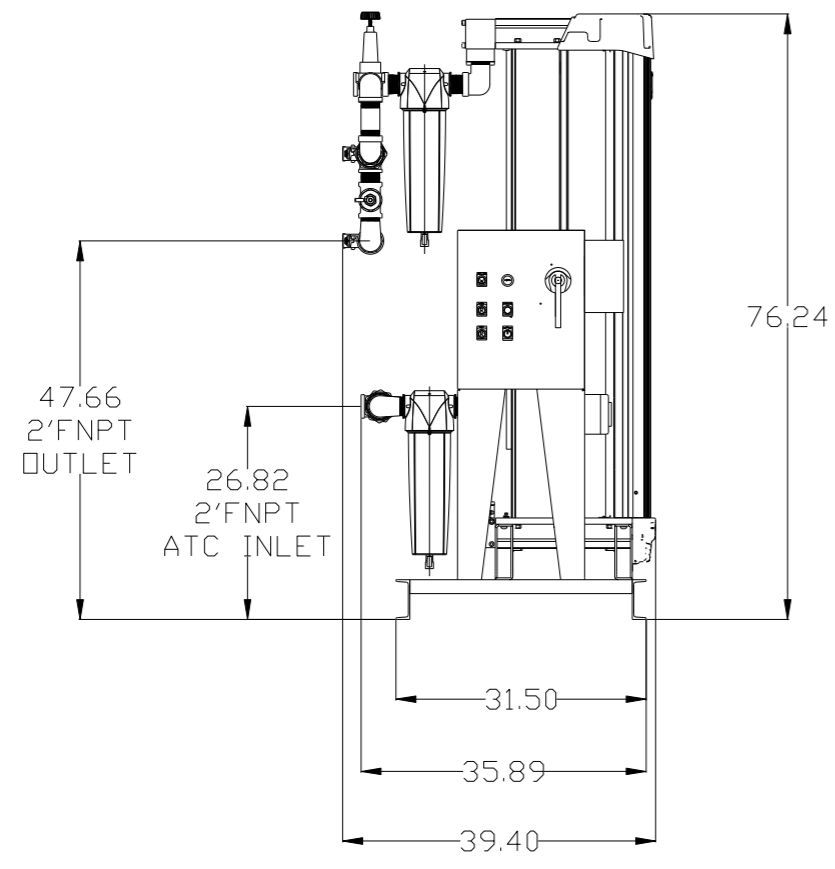
NOTES:
 1) ASME CERTIFIED VESSEL
 2) ALL DIMENSIONS ARE REFERENCE DIMENSIONS
 3) APPROXIMATE WT. - 880 LBS.

SYMBOL LEGEND		⊕ = MINUS DRAFT	⊖ = PLUS DRAFT	⊕ = ADDITIONAL CONTROL REQ'D	⊖ = BRINELL HARDNESS	Drawings to conform to the current revision of the following ANSI standards: Y14.9 Multi and sectional view dsgs. Y14.5M Dimensioning and tolerancing
TOLERANCES NOT SPECIFIED		.XX ±	.XXX ±	Z (DEG.) ±	AUTOCAD REL2008 LT	DO NOT SCALE DRAWING FOR DIMENSIONS
CONFIDENTIAL DISCLOSURE This drawing is the property of POWEREX, INC. of the SCOTT FITZGER COMPANY and subject to return on demand. Its contents are confidential and must not be copied or submitted to outside parties for use or examination.		DRAWN BY		CHECKED BY	APPROVED BY	SCALE 1:12
PART NAME		8/6/13		8/7/13	8/7/12	8/7/12
40-100HP VFD TRIPLEX ENCLOSED COMPRESSOR		MATERIAL		N/A		 150 PRODUCTION DRIVE, HARRISON, OHIO 45030 Ph: 888-769-7979 FAX: (513) 367-3125
400 GALLON DUAL DESICCANT PACKAGE		DWG NO		MTRE0407		

REV	ZDNE	REVISION	DATE	ECN	NAME	CHKD
A-1	ALL	SUBMITTAL DRAWINGS	8/7/13	PXEC0052	RK	AEK
B-1	ALL	RELEASE FOR PRODUCTION	8/7/13	PXEC0052	RK	AEK
C-1	ALL	CHANGED TANK PSI FROM 200 TO 165	04/26/18	PXEC0229	DMS	GES

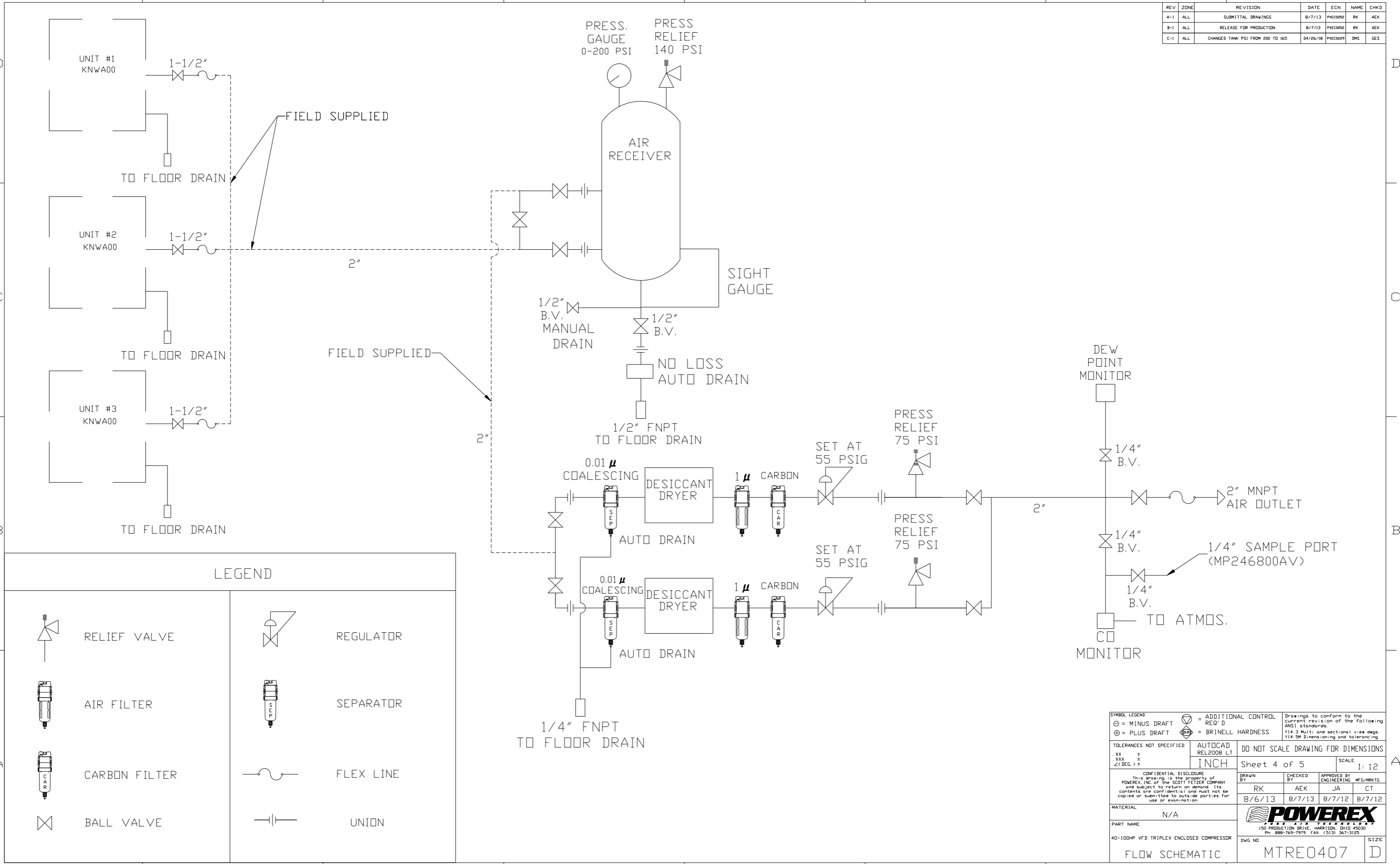


2X DESICCANT AIR DRYER
W/ PRE-FILTER, AFTER-FILTER,
& CHARCOAL FILTER (OPTIONAL).



SYMBOL LEGEND		⊖ = MINUS DRAFT	⊕ = PLUS DRAFT	⊕ = ADDITIONAL CONTROL REQ'D	⊕ = BRINELL HARDNESS	Drawings to conform to the current revision of the following ANSI standards: Y14.3 Multi and sectional view dwgs. Y14.5M Dimensioning and tolerancing
TOLERANCES NOT SPECIFIED		.XX ±	.XXX ±	<DEG> ±	AUTOCAD REL2008 LT	DO NOT SCALE DRAWING FOR DIMENSIONS
CONFIDENTIAL DISCLOSURE This drawing is the property of POWEREX, INC. of the SCOTT FETZER COMPANY and subject to return on demand. Its contents are confidential and must not be copied or submitted to outside parties for use or examination.		DRAWN BY: RK		CHECKED BY: AEK	APPROVED BY: JA	SCALE: 1:12
MATERIAL: N/A		8/6/13		8/7/13	8/7/12	8/7/12
PART NAME: DRYER PACKAGE SKID		8/6/13		8/7/13	8/7/12	8/7/12
55" X 31.5"		DWG NO: MTRE0407		SIZE: D		MDRE0406.dwg

REV	ZONE	REVISION	DATE	ECN	NAME	CHKD
A-1	ALL	SUBMITTAL DRAWINGS	8/7/13	PXEC0052	RK	AEK
B-1	ALL	RELEASE FOR PRODUCTION	8/7/13	PXEC0052	RK	AEK
C-1	ALL	CHANGED TANK PSI FROM 200 TO 165	04/26/18	PXEC0229	DMS	GES

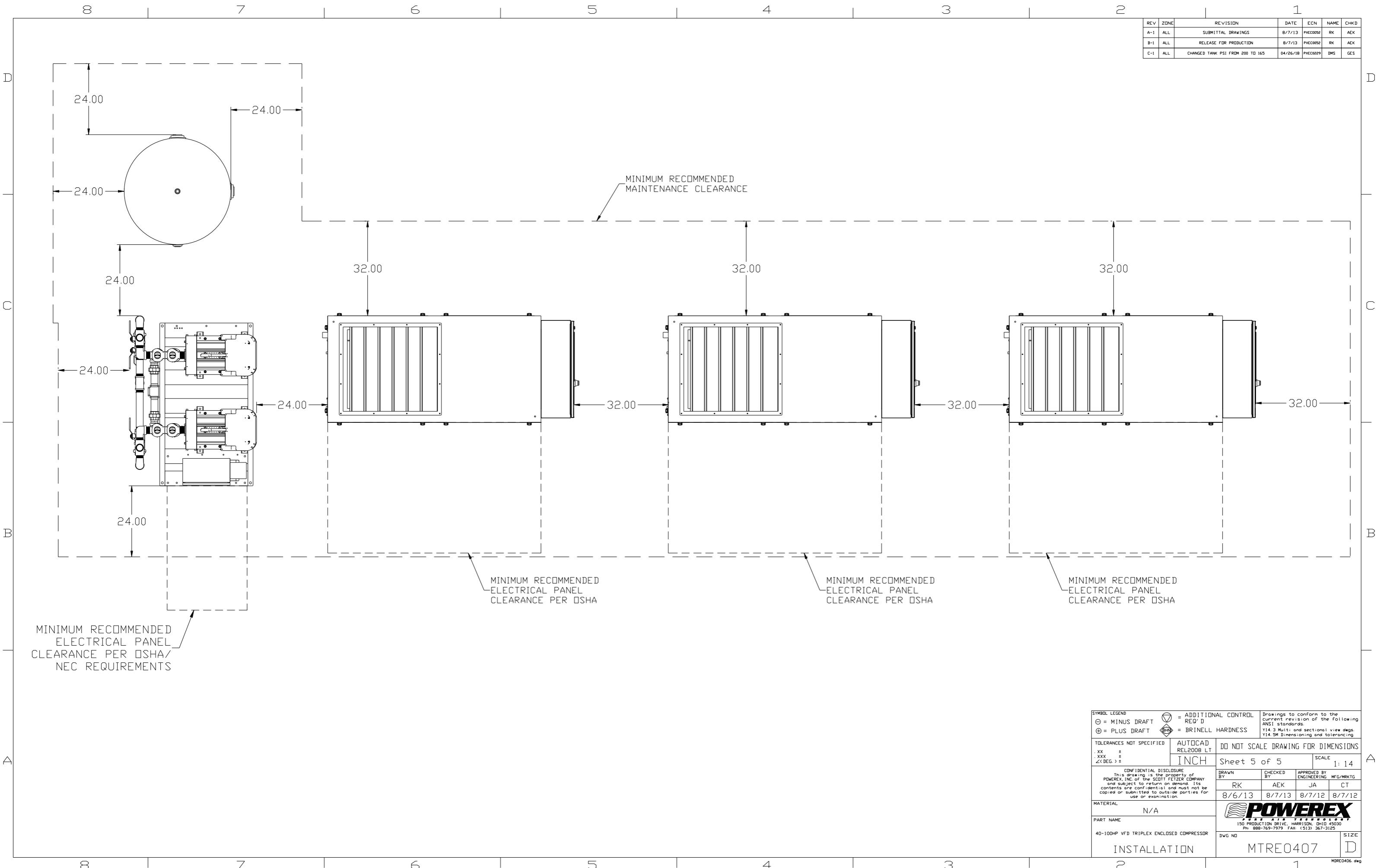


LEGEND

	RELIEF VALVE		REGULATOR
	AIR FILTER		SEPARATOR
	CARBON FILTER		FLEX LINE
	BALL VALVE		UNION

<p>SYMBOL LEGEND</p> <p>⊖ = MINUS DRAFT</p> <p>⊕ = PLUS DRAFT</p> <p>TOLERANCES NOT SPECIFIED</p> <p>.XX ±</p> <p>.XXX ±</p> <p><< (DEG.) ±</p>	<p>⊕ = ADDITIONAL CONTROL REQ'D</p> <p>BRN = BRINELL HARDNESS</p> <p>AUTOCAD REL2008 LT</p> <p>INCH</p>	<p>Drawings to conform to the current revision of the following ANSI standards:</p> <p>Y14.3 Multi and sectional view dngs</p> <p>Y14.5M Dimensioning and tolerancing</p>
<p>DO NOT SCALE DRAWING FOR DIMENSIONS</p> <p>Sheet 4 of 5</p> <p>SCALE 1:12</p>		<p>CONFIDENTIAL DISCLOSURE</p> <p>This drawing is the property of POWEREX, INC. of the SCOTT FETZER COMPANY and subject to return on demand. Its contents are confidential and must not be copied or submitted to outside parties for use or examination.</p>
<p>PART NAME</p> <p>40-100HP VFD TRIPLEX ENCLOSED COMPRESSOR</p>		<p>POWEREX</p> <p>150 PRODUCTION DRIVE, HARRISON, OHIO 45030</p> <p>Ph: 888-769-7979 FAX: (513) 367-3125</p>
<p>DWG NO</p> <p>FLOW SCHEMATIC</p>		<p>MTRE0407</p> <p>SIZE D</p>

REV	ZONE	REVISION	DATE	ECN	NAME	CHKD
A-1	ALL	SUBMITTAL DRAWINGS	8/7/13	PKEC0052	RK	AEK
B-1	ALL	RELEASE FOR PRODUCTION	8/7/13	PKEC0052	RK	AEK
C-1	ALL	CHANGED TANK PSI FROM 200 TO 165	04/26/18	PKEC0229	DMS	GES



MINIMUM RECOMMENDED ELECTRICAL PANEL CLEARANCE PER OSHA/ NEC REQUIREMENTS

MINIMUM RECOMMENDED MAINTENANCE CLEARANCE

MINIMUM RECOMMENDED ELECTRICAL PANEL CLEARANCE PER OSHA

MINIMUM RECOMMENDED ELECTRICAL PANEL CLEARANCE PER OSHA

MINIMUM RECOMMENDED ELECTRICAL PANEL CLEARANCE PER OSHA

SYMBOL LEGEND ⊖ = MINUS DRAFT ⊕ = PLUS DRAFT ⊕ = ADDITIONAL CONTROL REQ'D HRC = BRINELL HARDNESS		Drawings to conform to the current revision of the following ANSI standards: Y14.3 Multi and sectional view dgs. Y14.5M Dimensioning and tolerancing	
TOLERANCES NOT SPECIFIED .XX ± .XXX ± << (DEG) ±		AUTOCAD REL2008 LT INCH DO NOT SCALE DRAWING FOR DIMENSIONS Sheet 5 of 5 SCALE 1: 14	
CONFIDENTIAL DISCLOSURE This drawing is the property of POWEREX, INC. of the SCOTT FETZER COMPANY and subject to return on demand. Its contents are confidential and must not be copied or submitted to outside parties for use or examination.		DRAWN BY: RK CHECKED BY: AEK APPROVED BY: ENGINEERING MFG/MRKTG JA CT 8/6/13 8/7/13 8/7/12 8/7/12	
MATERIAL: N/A		 150 PRODUCTION DRIVE, HARRISON, OHIO 45030 Ph: 888-769-7979 FAX: (513) 367-3125	
PART NAME: 40-100HP VFD TRIPLEX ENCLOSED COMPRESSOR		DWG NO: MTRE0407 SIZE: D	
INSTALLATION			