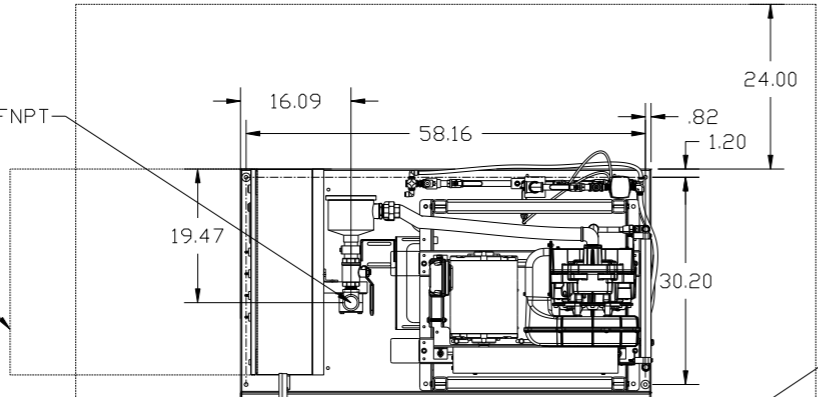


8 7 6 5 4 3 2 1

REV	ZONE	REVISION	DATE	ECN	NAME	CHKD
B-1	ALL	RELEASE TO PRODUCTION	10/28/14	PXEC0064	AEK	GES
C-1	ALL	WAVE 1 REDESIGN-SMALLER FOOTPRINT	02/12/15	PXEC0057	JBE	AEK
D-1	ALL	CORRECTED SEPARATOR DRAIN LINES TO 1/4"	01/04/16	PXEC0167	MJD	GES
D-1	ALL	ADDED NOTE TO REMOVE SEPARATOR FLDAT				
D-1	ALL	CORRECTED VIEW POSITIONING				
D-1	ALL	ADDED OVERALL DIMENSIONS				
D-1	ALL	ADDED OUTLINE FOR RECOMMENDED CLEARANCES				
D-1	ALL	UPDATED INLET TREE				

MINIMUM RECOMMENDED ELECTRICAL PANEL CLEARANCE PER OSHA/NEC REQUIREMENTS

INLET 1-1/2" FNPT



OUTLET 3/4" FNPT

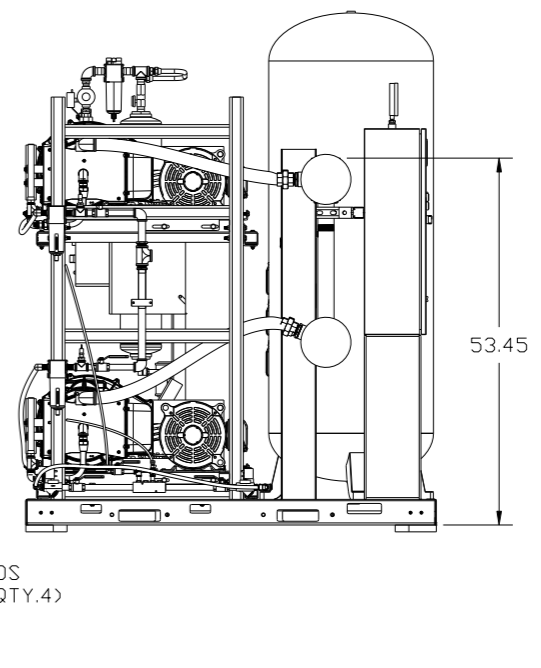
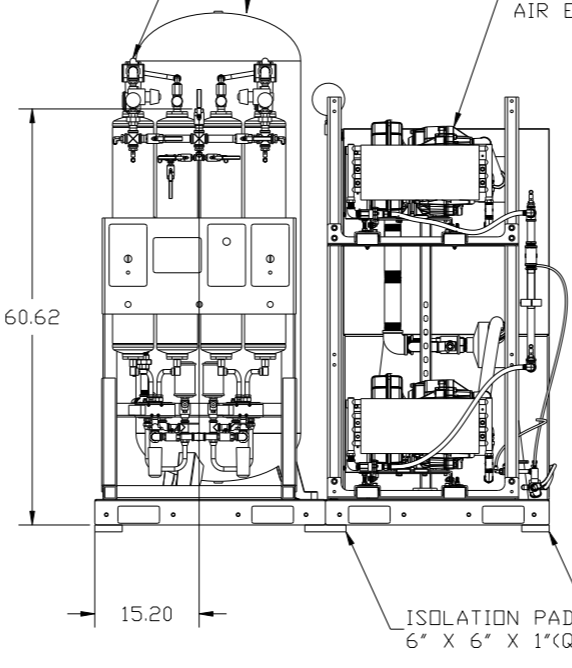
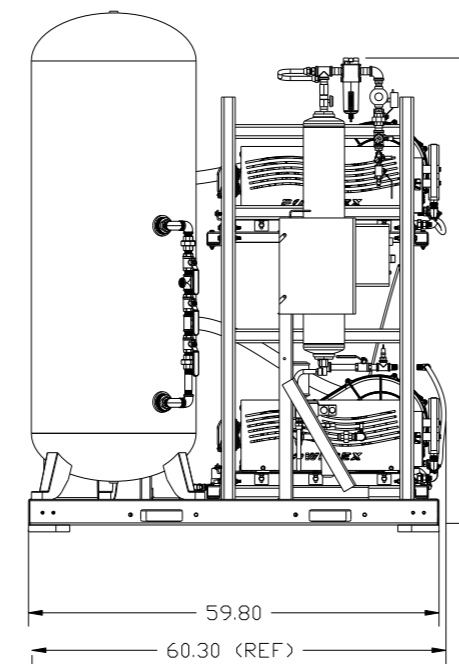
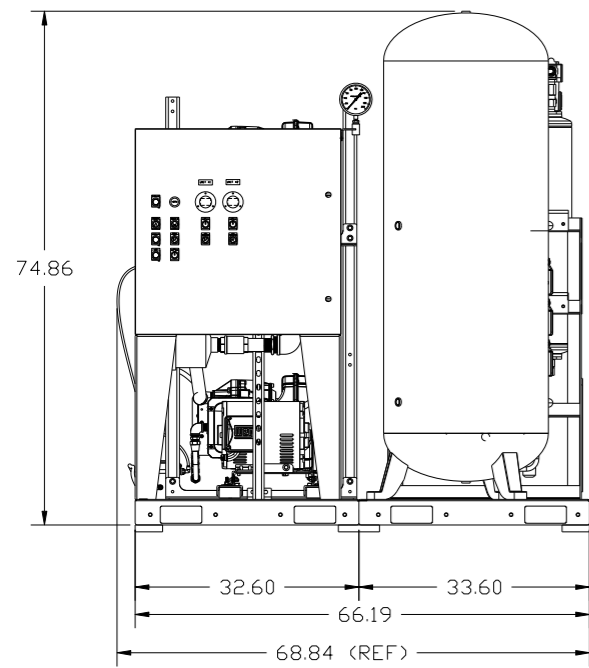
MINIMUM RECOMMENDED MAINTENANCE CLEARANCE

8X Ø0.75

2X DESICCANT DRYER W/ DEW POINT MONITOR, OPTIONAL CARBON MONOXIDE MONITOR, PRE FILTER, AFTER FILTER & OPTIONAL CHARCOAL FILTER.

120 GALLON ASME AIR RECEIVER INTERNALLY LINED

2X 10HP DILLESS SCROLL AIR END



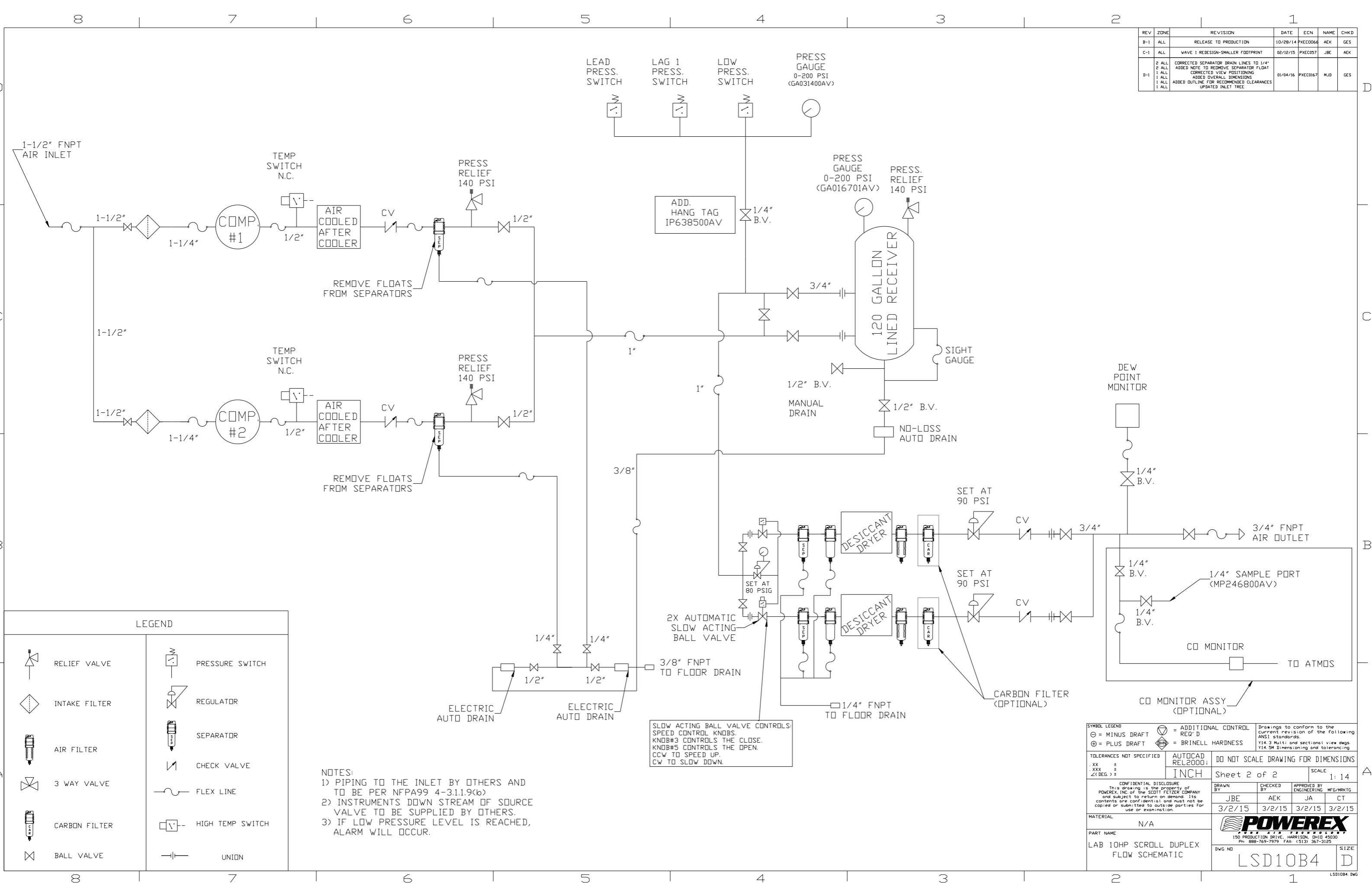
ISOLATION PADS 4" X 4" X 1"(QTY.4)
ISOLATION PADS 6" X 6" X 1"(QTY.2)

NOTE: SYSTEM DESIGNED IN COMPLIANCE WITH US NFPA'99, LATEST EDITION.

SYMBOL LEGEND ⊖ = MINUS DRAFT ⊕ = PLUS DRAFT ⊕ = ADDITIONAL CONTROL REQ'D HRC = BRINELL HARDNESS		Drawings to conform to the current revision of the following ANSI standards: Y14.3 Multi and sectional view dwgs. Y14.5M Dimensioning and tolerancing	
TOLERANCES NOT SPECIFIED .XX ± .XXX ± <BEG. ±		AUTOCAD REL2000 INCH	
DO NOT SCALE DRAWING FOR DIMENSIONS		Sheet 1 of 2 SCALE 1:14	
CONFIDENTIAL DISCLOSURE This drawing is the property of POWEREX, INC. of the SCOTT FETZER COMPANY and subject to return on demand. Its contents are confidential and must not be copied or submitted to outside parties for use or examination.		DRAWN BY: JBE CHECKED BY: AEK APPROVED BY: JA MFG/MKTG: CT 3/2/15 3/2/15 3/2/15 3/2/15	
MATERIAL: N/A		POWEREX 150 PRODUCTION DRIVE, HARRISON, OHIO 45030 Ph: 888-769-7979 FAX: (513) 367-3125	
PART NAME: DUPLEX DILLESS SCROLL LAB 10HP, 120GAL. DUPLEX DESICCANT		DWG NO: LSD10B4 SIZE: D	

8 7 6 5 4 3 2 1

REV	ZONE	REVISION	DATE	ECN	NAME	CHKD
B-1	ALL	RELEASE TO PRODUCTION	10/28/14	PXEC0066	AEK	GES
C-1	ALL	WAVE 1 REDESIGN-SMALLER FOOTPRINT	02/12/15	PXEC0057	JBE	AEK
D-1	2 ALL	CORRECTED SEPARATOR DRAIN LINES TO 1/4"	01/04/16	PXEC0167	MJD	GES
	2 ALL	ADDED NOTE TO REMOVE SEPARATOR FLOAT				
	1 ALL	CORRECTED VIEW POSITIONING				
	1 ALL	ADDED OUTLINE FOR RECOMMENDED CLEARANCES				



LEGEND	
	RELIEF VALVE
	INTAKE FILTER
	AIR FILTER
	3 WAY VALVE
	CARBON FILTER
	BALL VALVE
	PRESSURE SWITCH
	REGULATOR
	SEPARATOR
	CHECK VALVE
	FLEX LINE
	HIGH TEMP SWITCH
	UNION

NOTES:
 1) PIPING TO THE INLET BY OTHERS AND TO BE PER NFA99 4-3.1.1.9(b)
 2) INSTRUMENTS DOWN STREAM OF SOURCE VALVE TO BE SUPPLIED BY OTHERS.
 3) IF LOW PRESSURE LEVEL IS REACHED, ALARM WILL OCCUR.

SLOW ACTING BALL VALVE CONTROLS SPEED CONTROL KNOBS. KNOB#3 CONTROLS THE CLOSE. KNOB#5 CONTROLS THE OPEN. CCW TO SPEED UP. CW TO SLOW DOWN.

SYMBOL LEGEND		= ADDITIONAL CONTROL REQ'D		Drawings to conform to the current revision of the following ANSI standards	
⊖	MINUS DRAFT	⊕	PLUS DRAFT	⊖	BRINELL HARDNESS
TOLERANCES NOT SPECIFIED		AUTOCAD REL2000:		DO NOT SCALE DRAWING FOR DIMENSIONS	
.XX ±	.XXX ±	INCH		Sheet 2 of 2	
CONFIDENTIAL DISCLOSURE		APPROVED BY		SCALE 1:14	
This drawing is the property of POWEREX, INC. of the SCOTT FETZER COMPANY and subject to return on demand. Its contents are confidential and must not be copied or submitted to outside parties for use or examination.		DRWN BY	CHEKED BY	APPROVED BY	MFG/MRKTG
JBE	AEK	JA	CT		
3/2/15	3/2/15	3/2/15	3/2/15		
MATERIAL N/A		PART NAME		LAB 10HP SCROLL DUPLEX FLOW SCHEMATIC	
DWG NO		LSD10B4		SIZE D	

REV	ZONE	REVISION	DATE	ECN	NAME	CHKD
B-1	ALL	RELEASE TO PRODUCTION	10/28/14	PXEC0066	AEK	GES
C-1	ALL	WAVE 1 REDESIGN-SMALLER FOOTPRINT	02/12/15	PXEC0057	JBE	AEK
D-1	2 ALL	CORRECTED SEPARATOR DRAIN LINES TO 1/4"	01/04/16	PXEC0167	MJD	GES
	2 ALL	ADDED NOTE TO REMOVE SEPARATOR FLGAT				
	1 ALL	CORRECTED VIEW POSITIONING				
	1 ALL	ADDED OVERALL DIMENSIONS				
	1 ALL	ADDED OUTLINE FOR RECOMMENDED CLEARANCES				
	1 ALL	UPDATED INLET TRC				

MINIMUM RECOMMENDED ELECTRICAL PANEL CLEARANCE PER OSHA/NEC REQUIREMENTS

INLET 1-1/2" FNPT

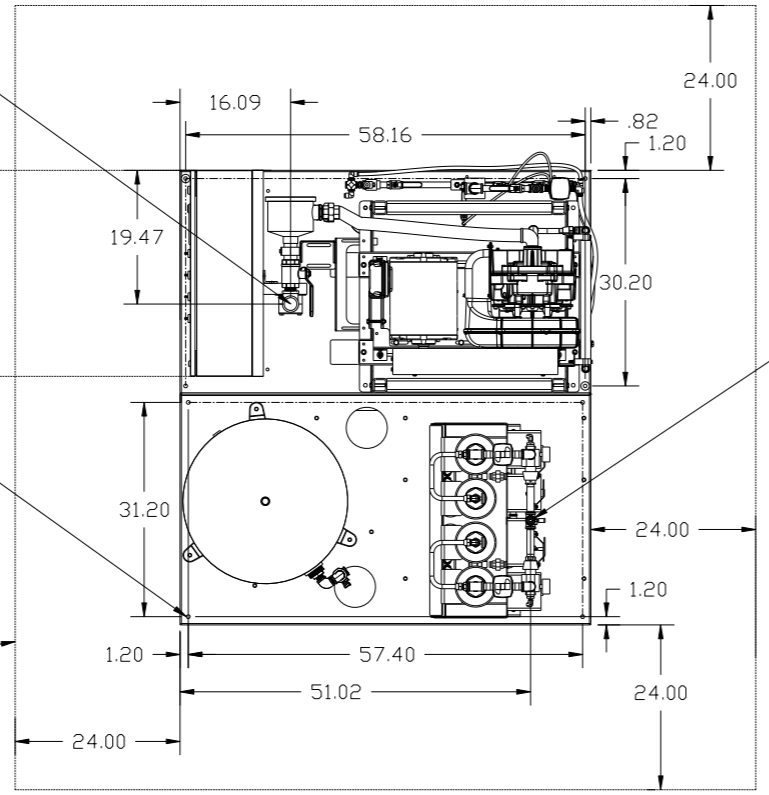
OUTLET 3/4" FNPT

2X DESICCANT DRYER WITH OPTIONAL CARBON MONOXIDE MONITOR, PRE FILTER, AFTER FILTER & OPTIONAL CHARCOAL FILTER.

120 GALLON ASME AIR RECEIVER INTERNALLY LINED

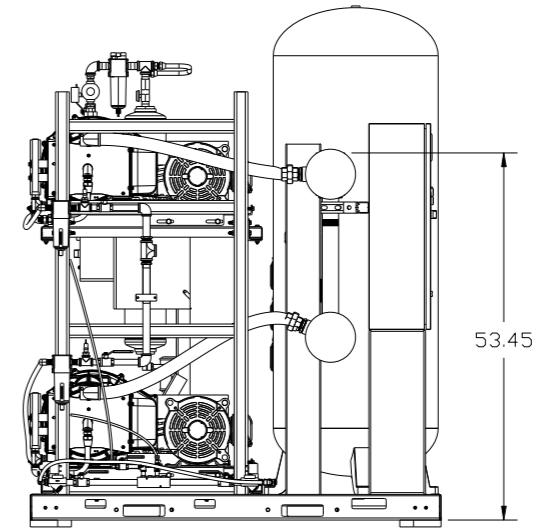
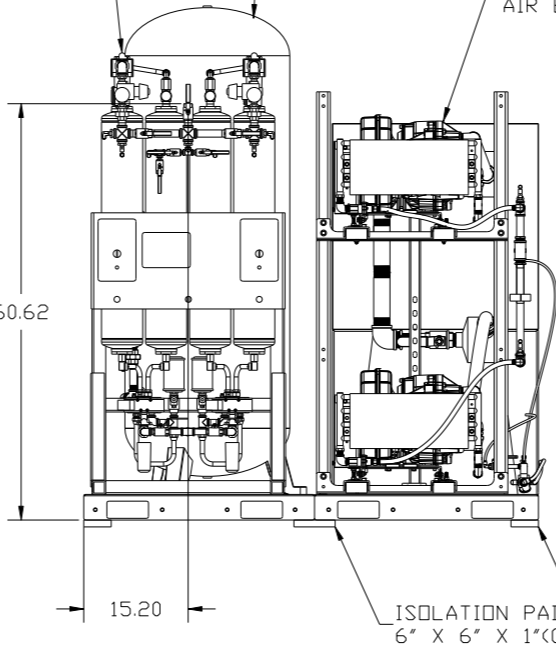
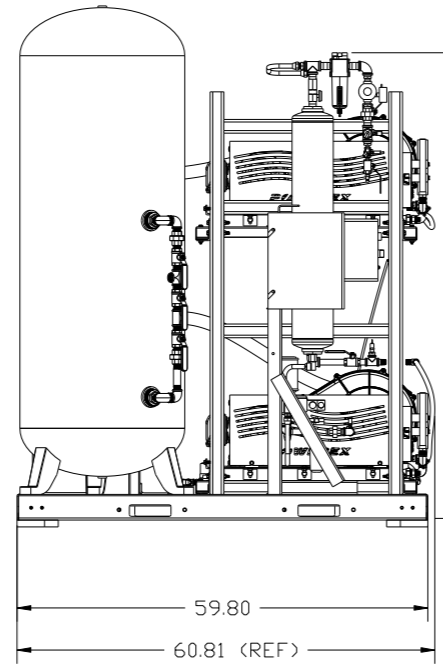
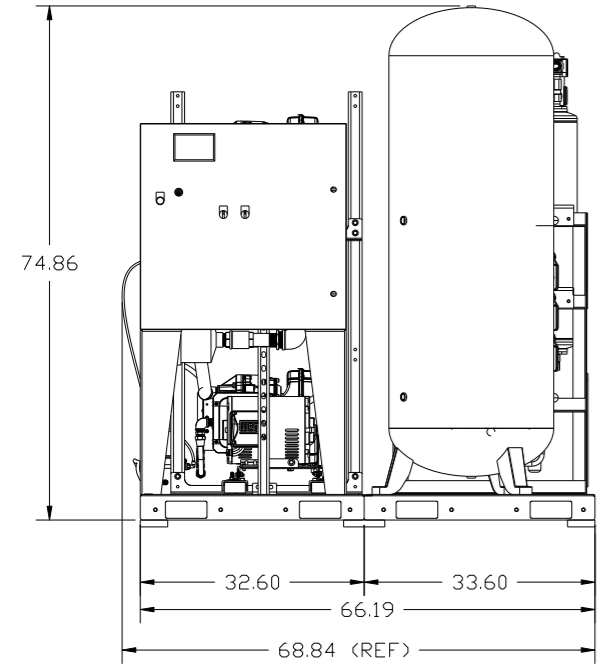
2X 10HP DILLESS SCROLL AIR END

ISOLATION PADS 4" X 4" X 1"(QTY.4)
ISOLATION PADS 6" X 6" X 1"(QTY.2)



MINIMUM RECOMMENDED MAINTENANCE CLEARANCE

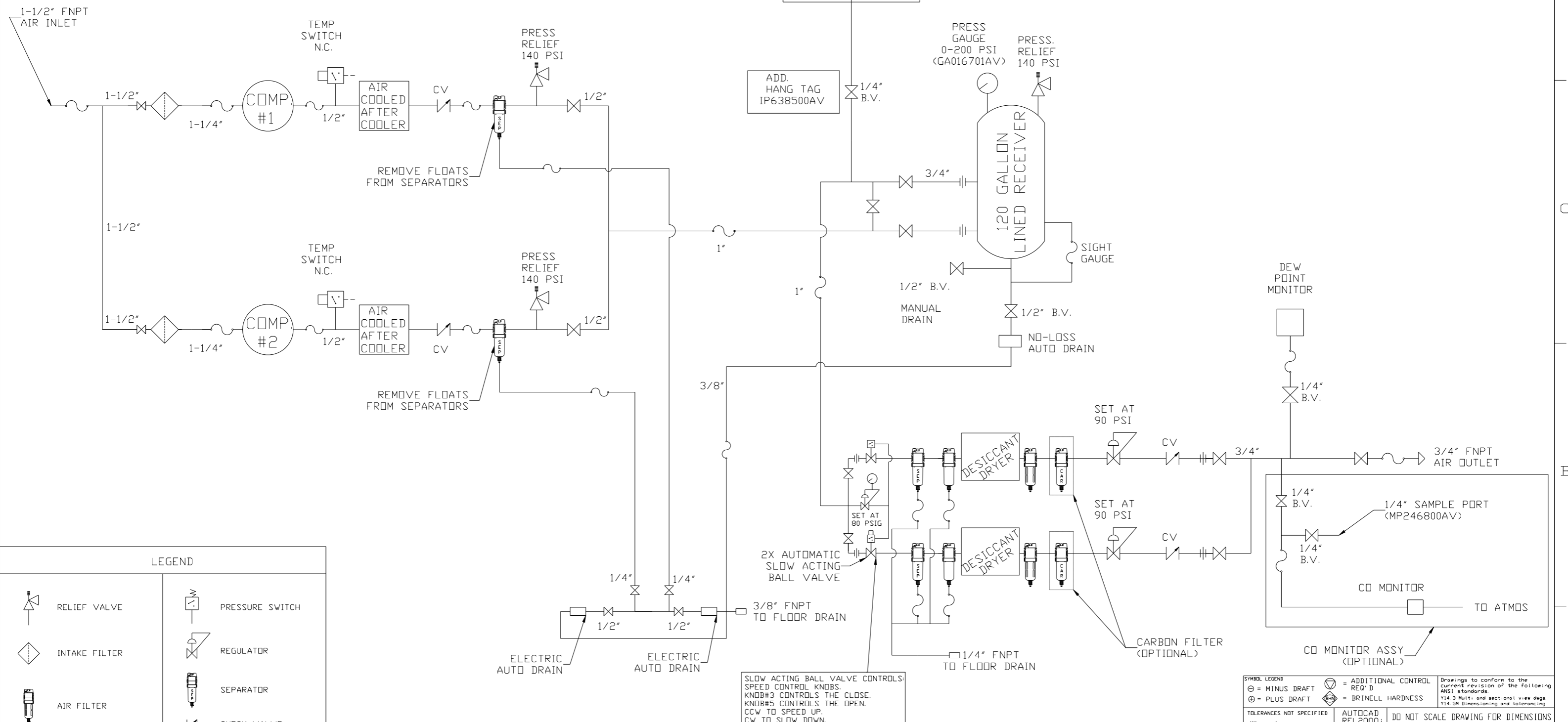
8X Ø0.75



NOTE: SYSTEM DESIGNED IN COMPLIANCE WITH US NFPA'99, LATEST EDITION.

SYMBOL LEGEND ⊖ = MINUS DRAFT ⊕ = PLUS DRAFT		⊕ = ADDITIONAL CONTROL REQ'D ⊕ = BRINELL HARDNESS		Drawings to conform to the current revision of the following ANSI standards: Y14.3 Multi and sectional view dgs Y14.5M Dimensioning and tolerancing	
TOLERANCES NOT SPECIFIED .XX ± .XXX ± <DEG. > ±		AUTOCAD REL2000 INCH		DO NOT SCALE DRAWING FOR DIMENSIONS Sheet 1 of 2 SCALE 1:14	
CONFIDENTIAL DISCLOSURE This drawing is the property of POWEREX, INC. or the SCOTT FELTZER COMPANY and subject to return on demand. Its contents are confidential and must not be copied or submitted to outside parties for use or examination.					
DRAWN BY JBE		CHECKED BY AEK		APPROVED BY ENGINEERING MFG/MRKTG JA CT	
DATE 3/2/15		DATE 3/2/15		DATE 3/2/15	
MATERIAL N/A				150 PRODUCTION DRIVE, HARRISON, OHIO 45030 Ph: 888-769-7979 FAX: (513) 367-3125	
PART NAME DUPLEX DILLESS SCROLL LAB 10HP, 120GAL. DUPLEX DESICCANT		DWG NO LSD10B4		SIZE D	

REV	ZONE	REVISION	DATE	ECN	NAME	CHKD
B-1	ALL	RELEASE TO PRODUCTION	10/28/14	PXEC0066	AEK	GES
C-1	ALL	WAVE 1 REDESIGN-SMALLER FOOTPRINT	02/12/15	PXEC0057	JBE	AEK
D-1	ALL	CORRECTED SEPARATOR BRAIN LINES TO 1/4"	01/04/16	PXEC0167	MJD	GES
	ALL	ADDED NOTE TO REMOVE SEPARATOR FLOAT				
	ALL	CORRECTED VIEW POSITIONING				
	ALL	ADDED OVERALL DIMENSIONS				
	ALL	ADDED OUTLINE FOR RECOMMENDED CLEARANCES				
	ALL	UPDATED INLET TREE				



LEGEND	
	RELIEF VALVE
	INTAKE FILTER
	AIR FILTER
	3 WAY VALVE
	CARBON FILTER
	BALL VALVE
	PRESSURE SWITCH
	REGULATOR
	SEPARATOR
	CHECK VALVE
	FLEX LINE
	HIGH TEMP SWITCH
	UNION

NOTES:
 1) PIPING TO THE INLET BY OTHERS AND TO BE PER NFPA99 4-3.1.1.9(b)
 2) INSTRUMENTS DOWN STREAM OF SOURCE VALVE TO BE SUPPLIED BY OTHERS.
 3) IF LOW PRESSURE LEVEL IS REACHED, ALARM WILL OCCUR.

SLOW ACTING BALL VALVE CONTROLS SPEED CONTROL KNOBS. KNOB#3 CONTROLS THE CLOSE. KNOB#5 CONTROLS THE OPEN. CW TO SPEED UP. CCW TO SLOW DOWN.

SYMBOL LEGEND		TOLERANCES NOT SPECIFIED		DO NOT SCALE DRAWING FOR DIMENSIONS	
	= MINUS DRAFT	.XX ±	INCH	Sheet 2 of 2	SCALE 1:14
	= PLUS DRAFT	.XXX ±	INCH	AUTOCAD REL2000	
	= ADDITIONAL CONTROL REQ'D	<DEG. ±	INCH	DO NOT SCALE DRAWING FOR DIMENSIONS	
	= BRINELL HARDNESS			DRAWINGS TO CONFORM TO THE CURRENT REVISION OF THE FOLLOWING ANSI STANDARDS: Y14.3 Multi and sectional view dsgs. Y14.5M Dimensioning and tolerancing	
CONFIDENTIAL DISCLOSURE This drawing is the property of POWEREX, INC. of the SCOTT FETZER COMPANY and subject to return on demand. Its contents are confidential and must not be copied or submitted to outside parties for use or examination.		DRAWN BY	CHECKED BY	APPROVED BY	DATE
		JBE	AEK	JA	CT
		3/2/15	3/2/15	3/2/15	3/2/15
MATERIAL		N/A			
PART NAME		LAB 10HP SCROLL DUPLEX FLOW SCHEMATIC			
DWG NO		LSD10B4		SIZE D	
				LSD10B4.DWG	