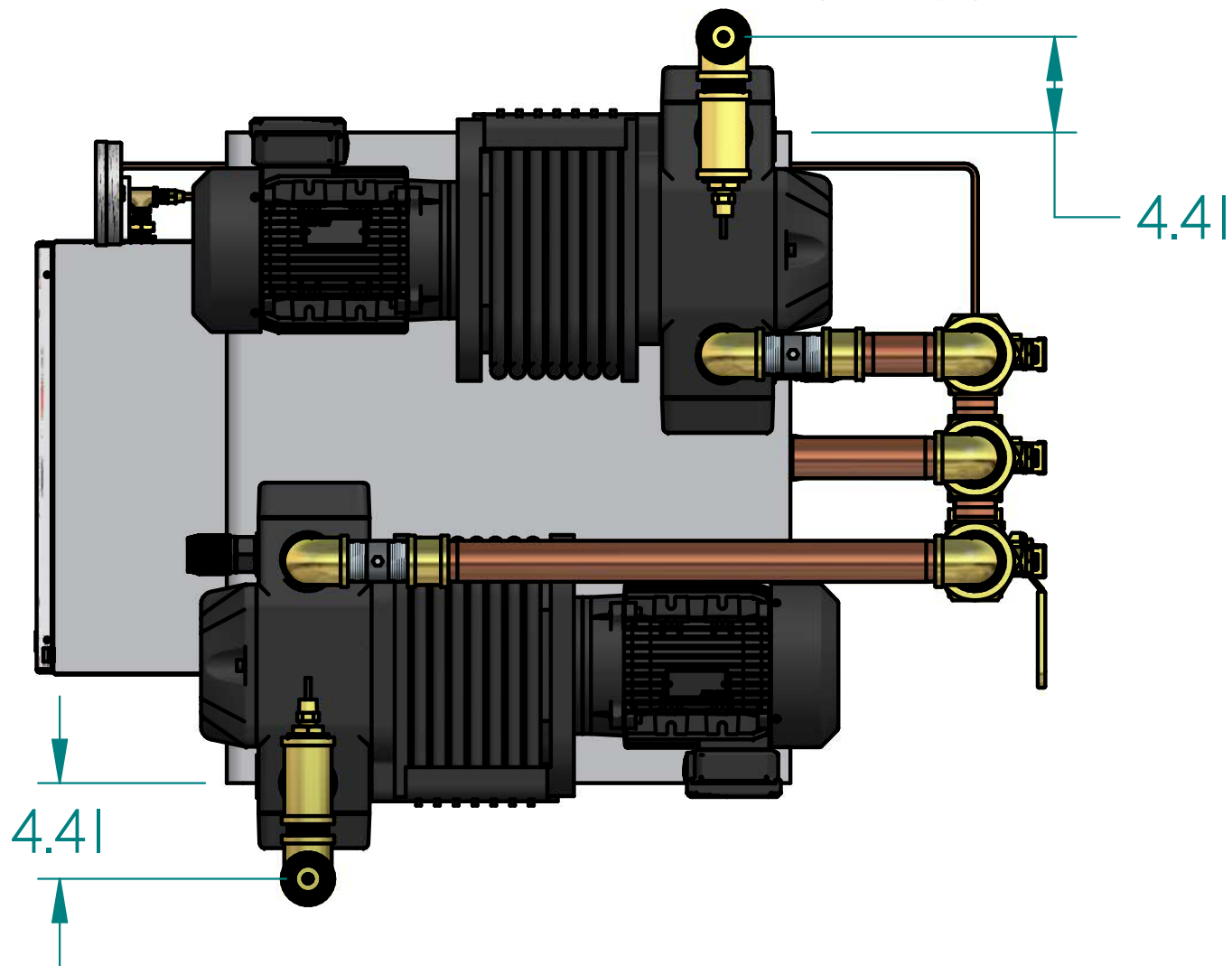
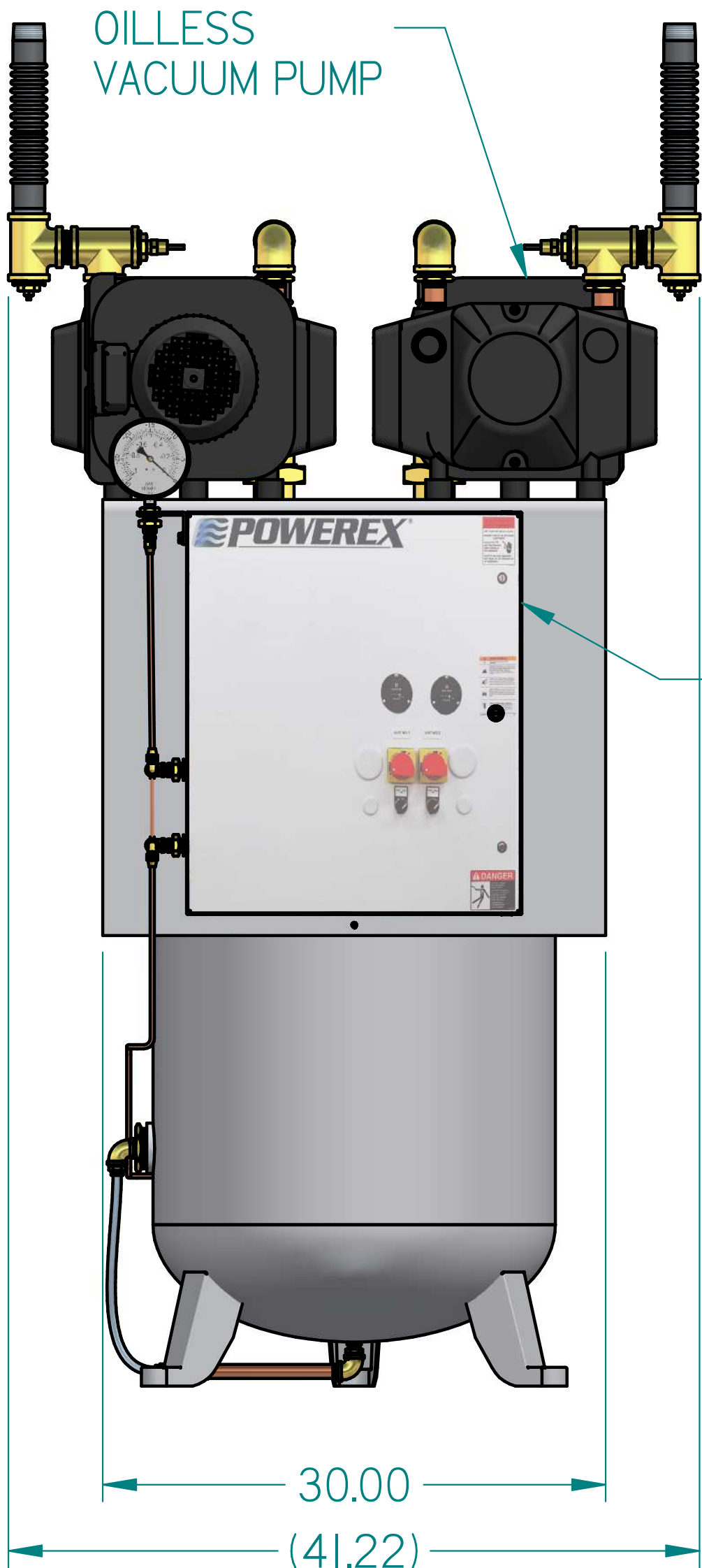


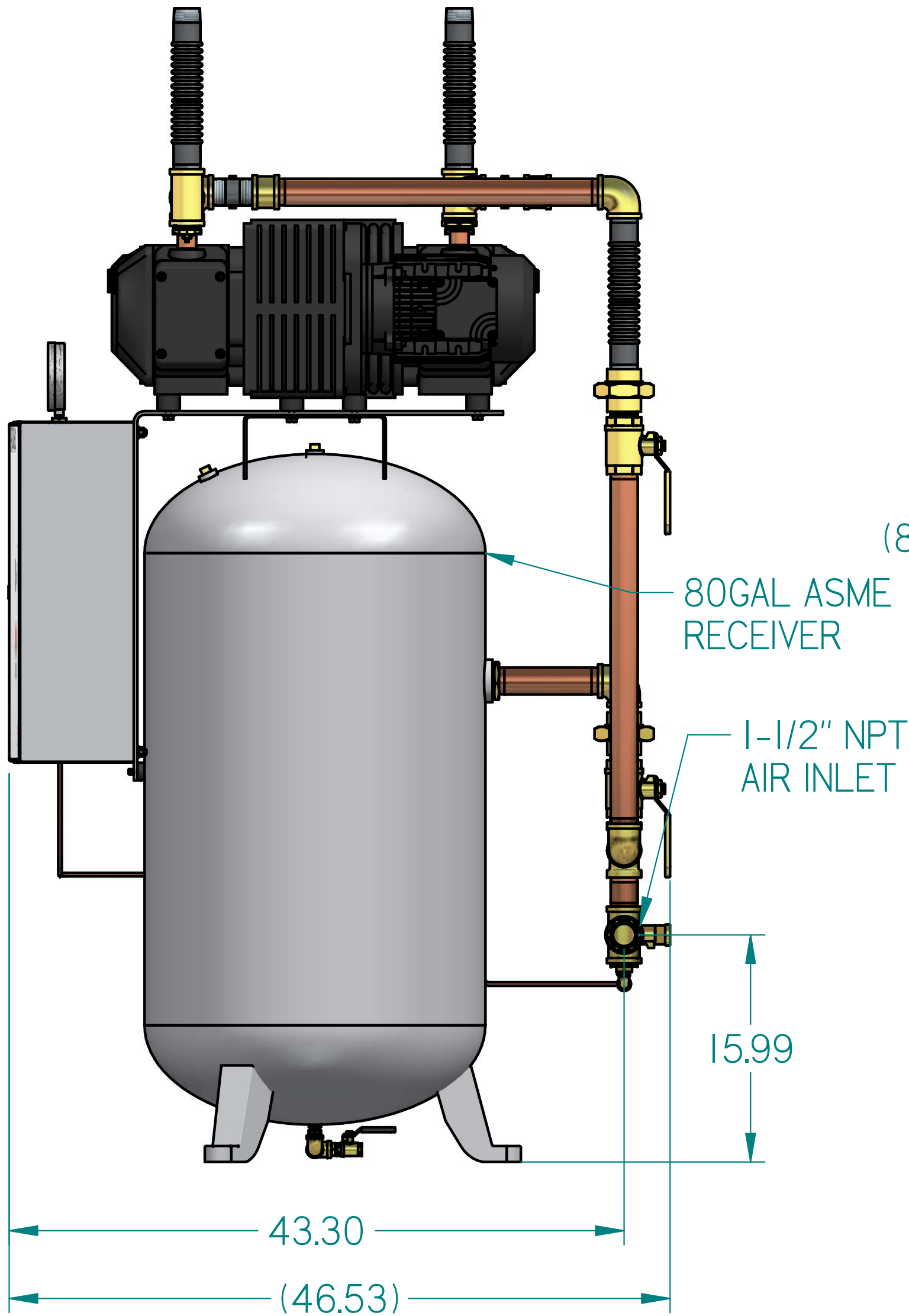
VVOTD0303KI
OILLESS DUPLEX VACUUM
3HP 80 GAL VERT



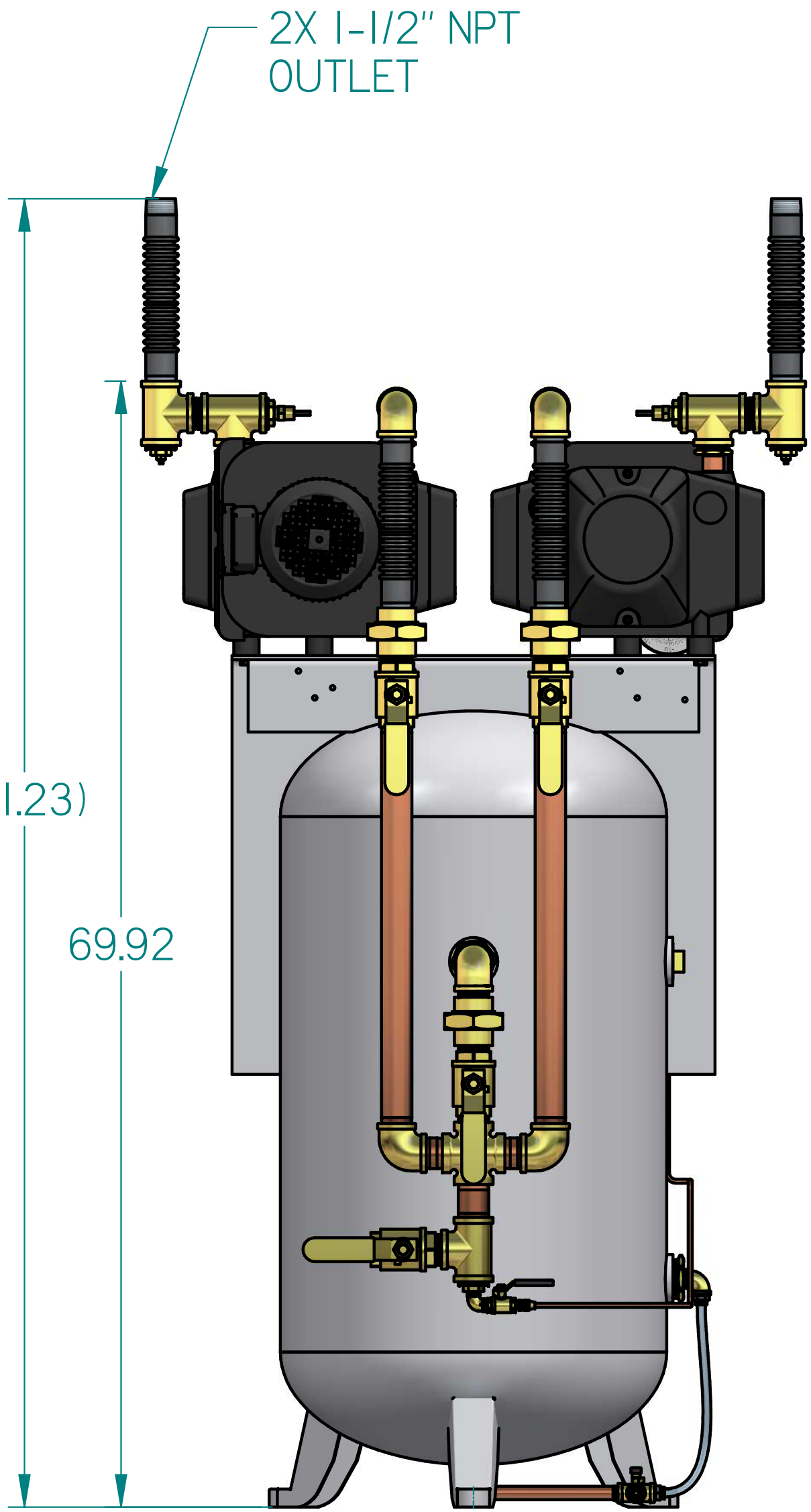
TOP VIEW



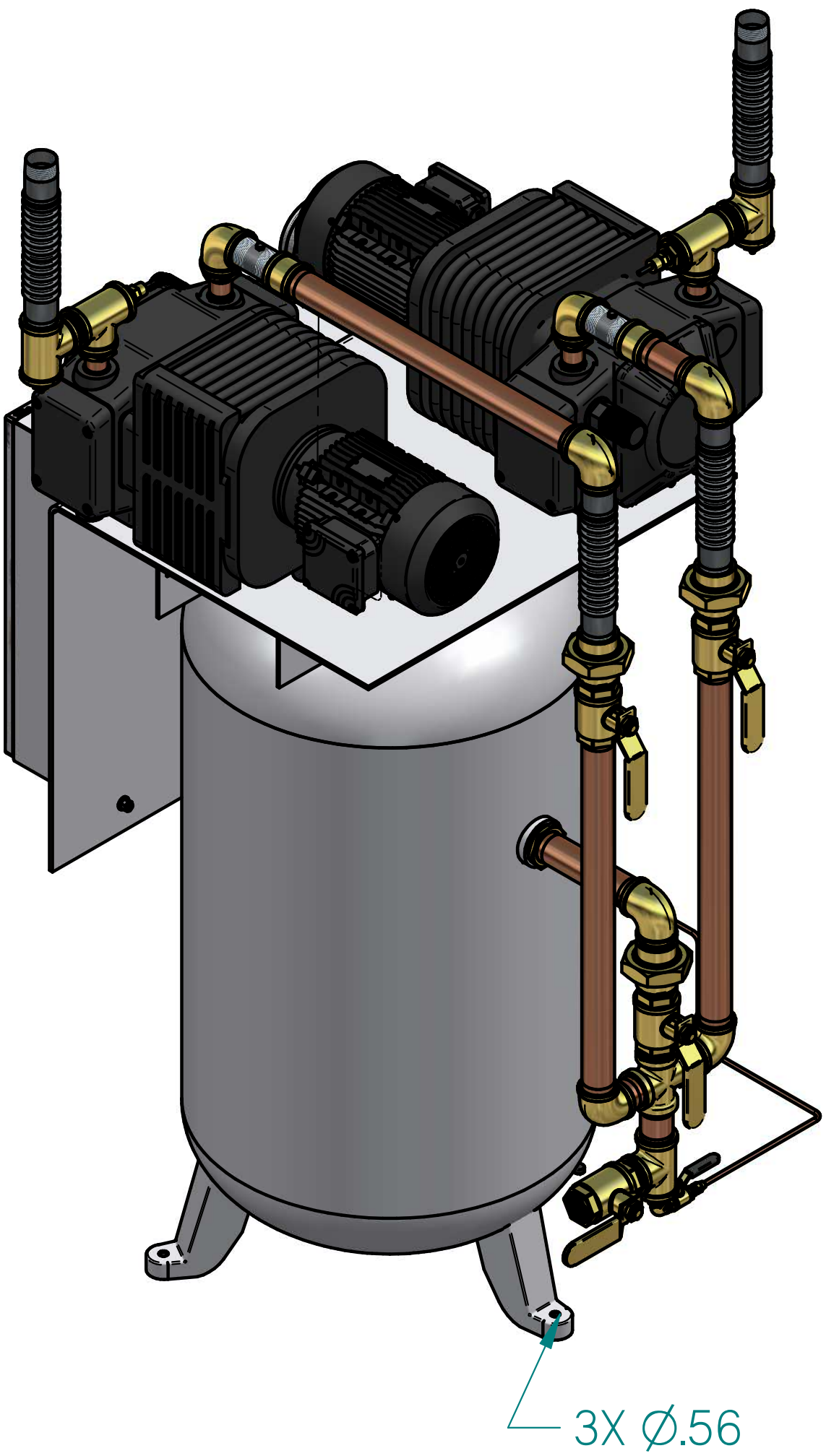
LEFT VIEW



FRONT VIEW



RIGHT VIEW



ISO VIEW

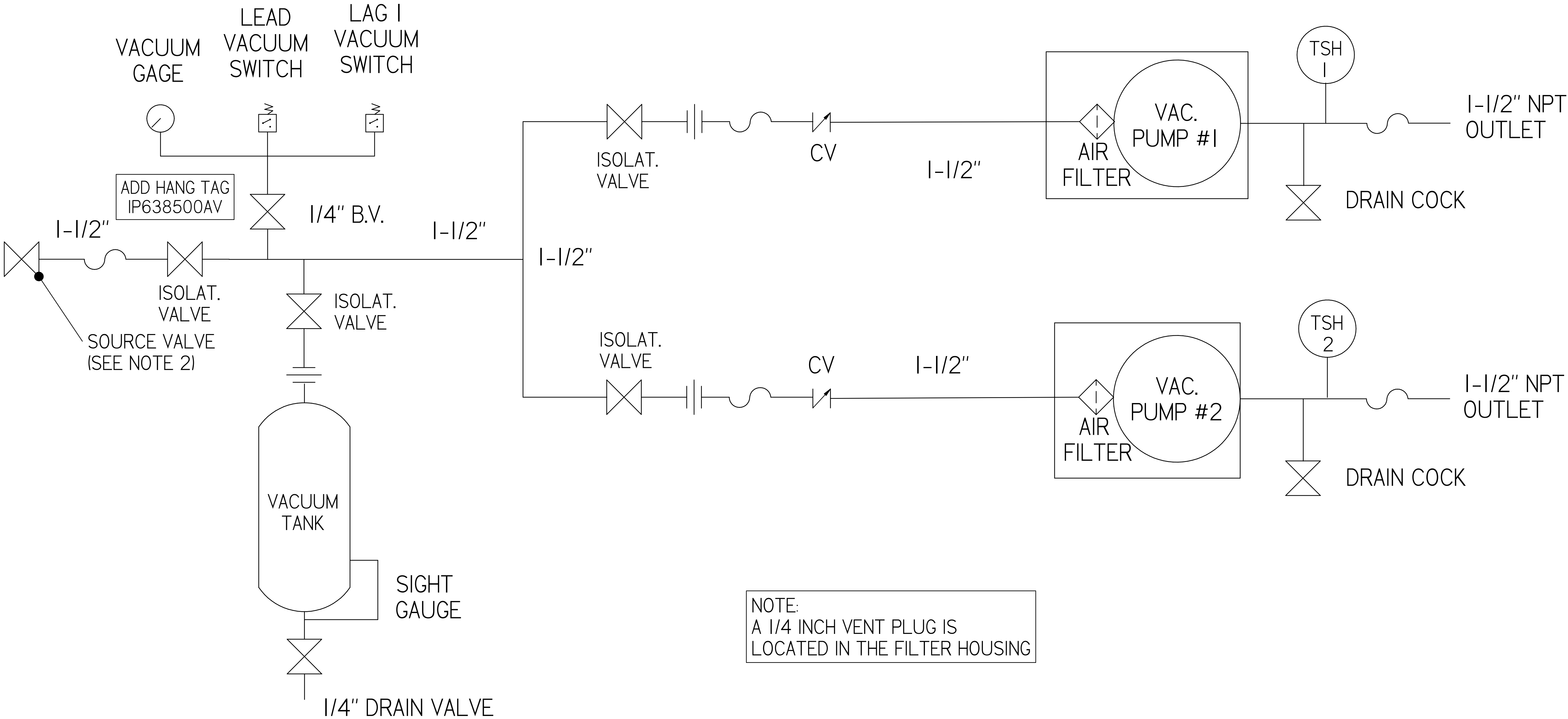
REVISION NOTES		
DESCRIPTION	ECN	PR/NOR
3D RELEASE	PXEC026I	N/A

SYMBOL LEGEND		DRAWINGS TO CONFORM TO CURRENT REVISION OF THE FOLLOWING ANSI STANDARDS:	
		Y14.3 MULTI-SECTIONAL VIEW DWGS	
		Y14.5 DIMENSIONING AND TOLERANCING	
TOLERANCES NOT SPECIFIED		DO NOT SCALE DRAWING FOR DIMENSIONS	
0.00X ± .005	INCH	SHEET 1 OF 2	SCALE 1:8
0.00X ± .005	INCH	APPROVALS ON FILE IN PLM	
CONFIDENTIAL DISCLOSURE This drawing is the property of POWEREX of the SCOTT PETER COMPANY and is subject to return on demand. Its contents are confidential and must not be copied or submitted to outside parties for use or examination.		AUTHOR	ORIGINATION DATE
ITEM ID		TATA	10-01-2019
MATERIAL		POWEREX	
DESCRIPTION		DRAWING NUMBER	REVISION
OILLESS DUPLEX VACUUM 3HP 80 GAL VERT		VVOTD0303KI	D

VVOTD0303KI
OILLESS DUPLEX VACUUM
3HP 80 GAL VERT

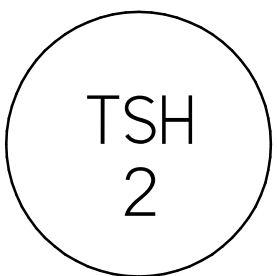
SYSTEM FLOW DIAGRAM

REVISION NOTES		
DESCRIPTION	ECN	PR/NOR
3D RELEASE	PXEC026I	N/A

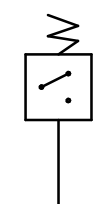


NOTE:
A 1/4 INCH VENT PLUG IS
LOCATED IN THE FILTER HOUSING

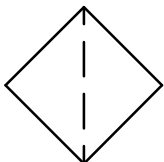
LEGEND



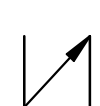
TEMP. SWITCH



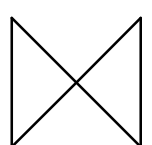
VACUUM SWITCH



AIR FILTER



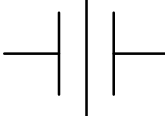
CHECK VALVE



BALL VALVE



FLEX LINE



UNION

NOTES:
1) TSH - TEMPERATURE SWITCH HIGH
2) PER NFPA THE SYSTEM WILL REQUIRE A SOURCE VALVE (SUPPLIED BY OTHERS)

SYMBOL LEGEND		DRAWINGS TO CONFORM TO CURRENT REVISION OF THE FOLLOWING ANSI STANDARDS:	
		Y14.3 MULTI AND SECTIONAL VIEW DWGS	
		Y14.5 DIMENSIONING AND TOLERANCING	
TOLERANCES NOT SPECIFIED:	SOLID EDGE DRAWING	DO NOT SCALE DRAWING FOR DIMENSIONS	
XXX ± .05			
XXX ± .005	INCH	SHEET 2 OF 2	SCALE 1:1
CONFIDENTIAL DISCLOSURE This drawing is the property of POWEREX of the SCOTT PETER COMPANY and is subject to return on demand. Its contents are confidential and must not be copied or submitted to outside parties for use or examination.		AUTHOR	APPROVALS ON FILE IN PLM
ITEM ID:		TATA	10-01-2019
MATERIAL:			
DESCRIPTION OILLESS DUPLEX VACUUM 3HP 80 GAL VERT		DRAWING NUMBER VVOTD0303KI	REVISION SIZE D