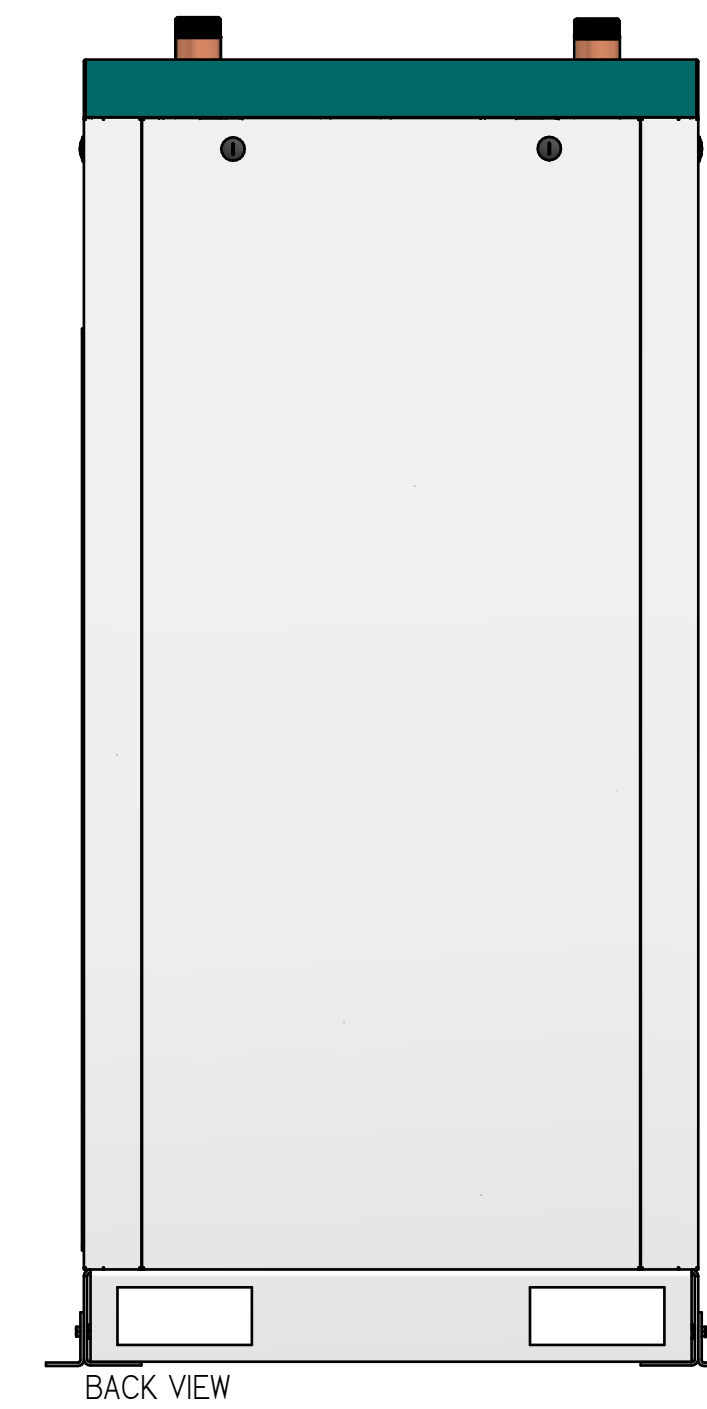
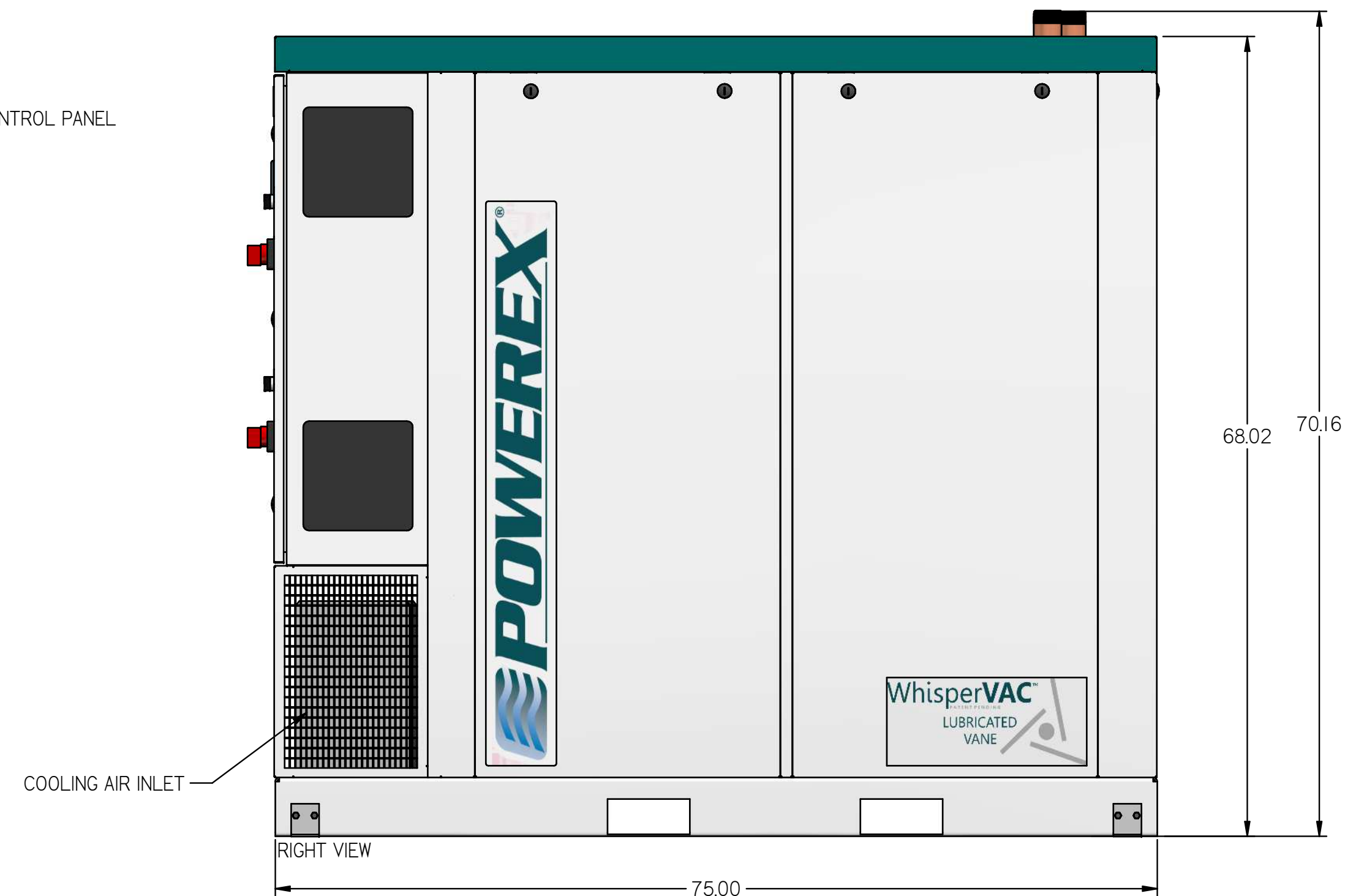
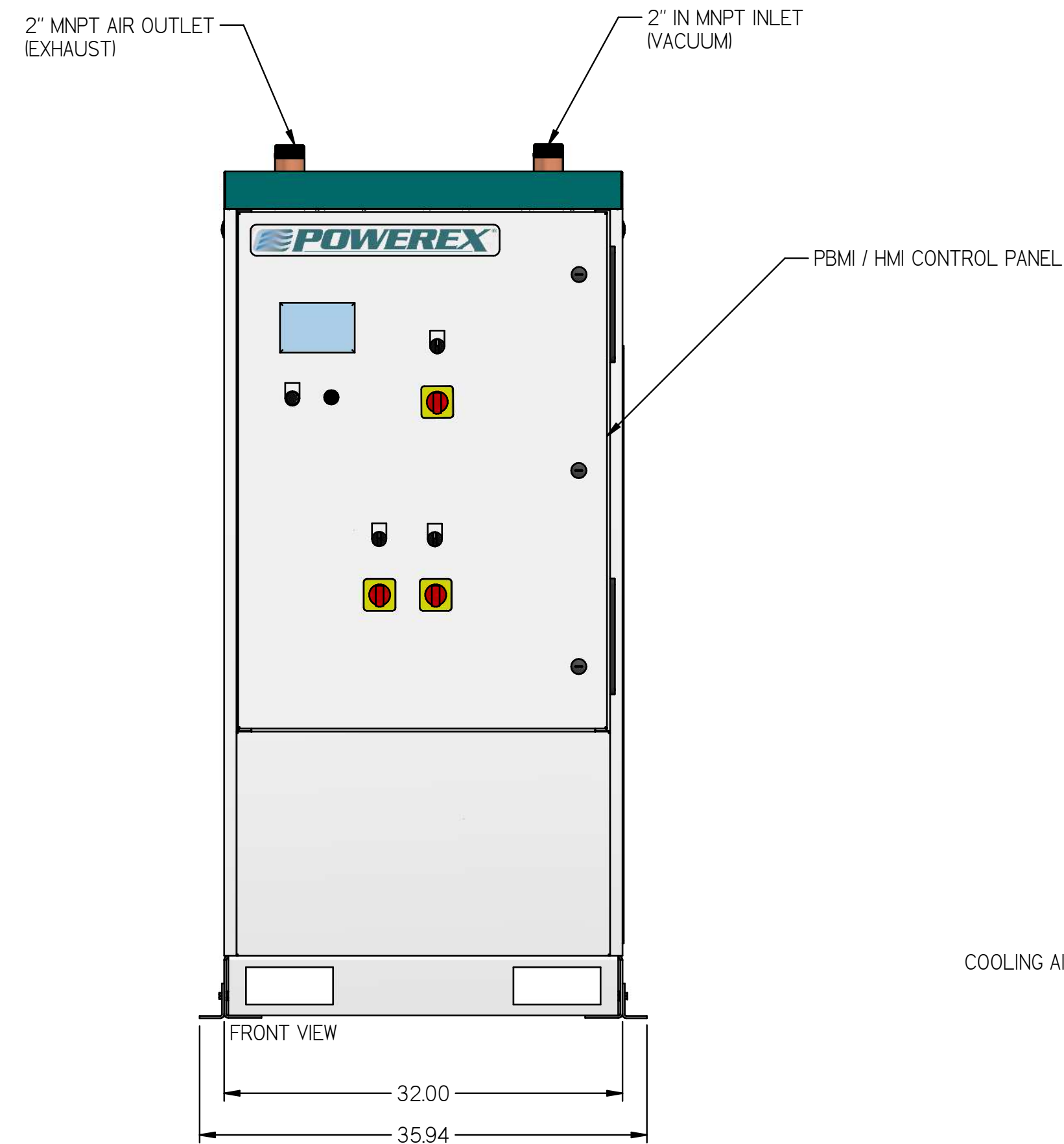
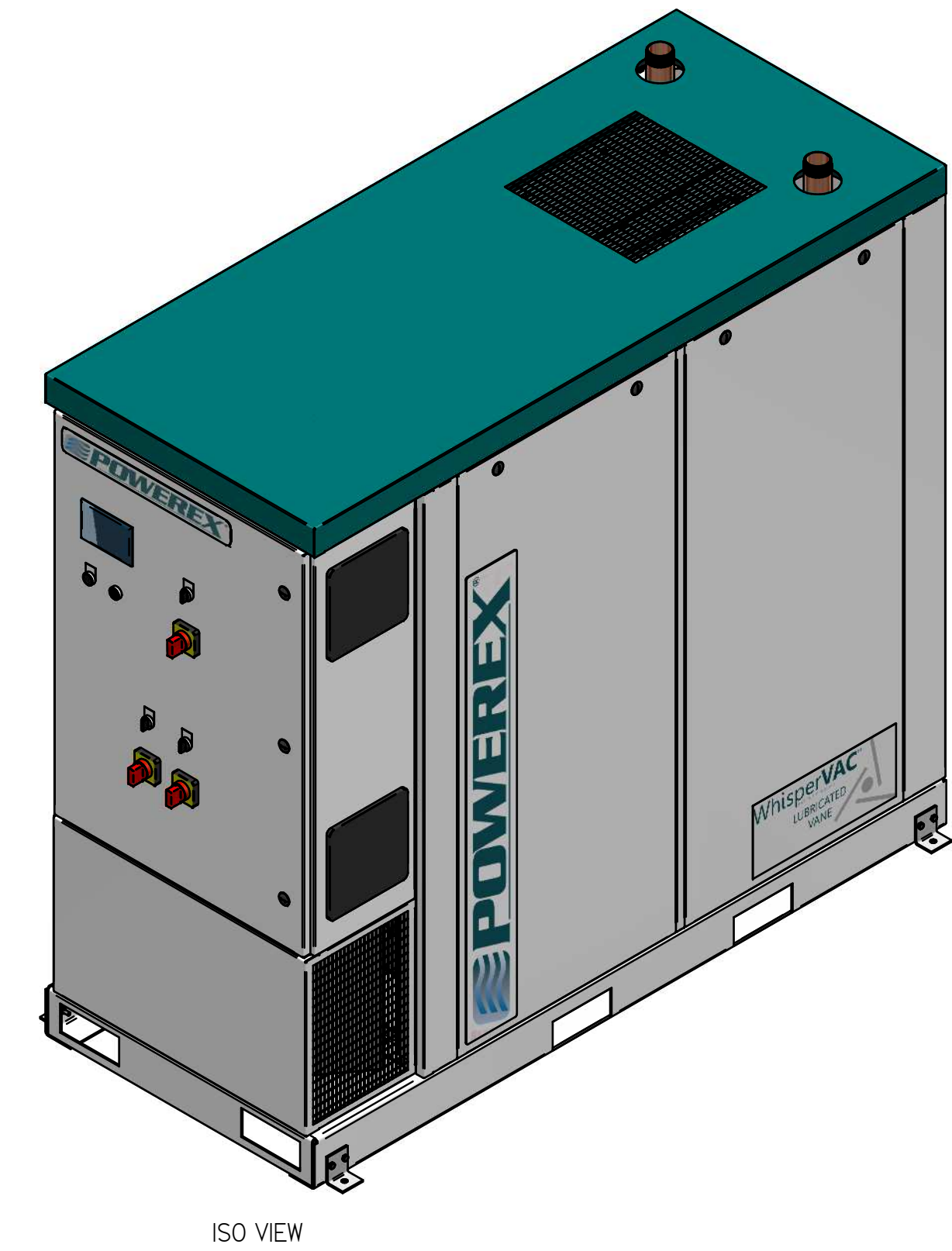
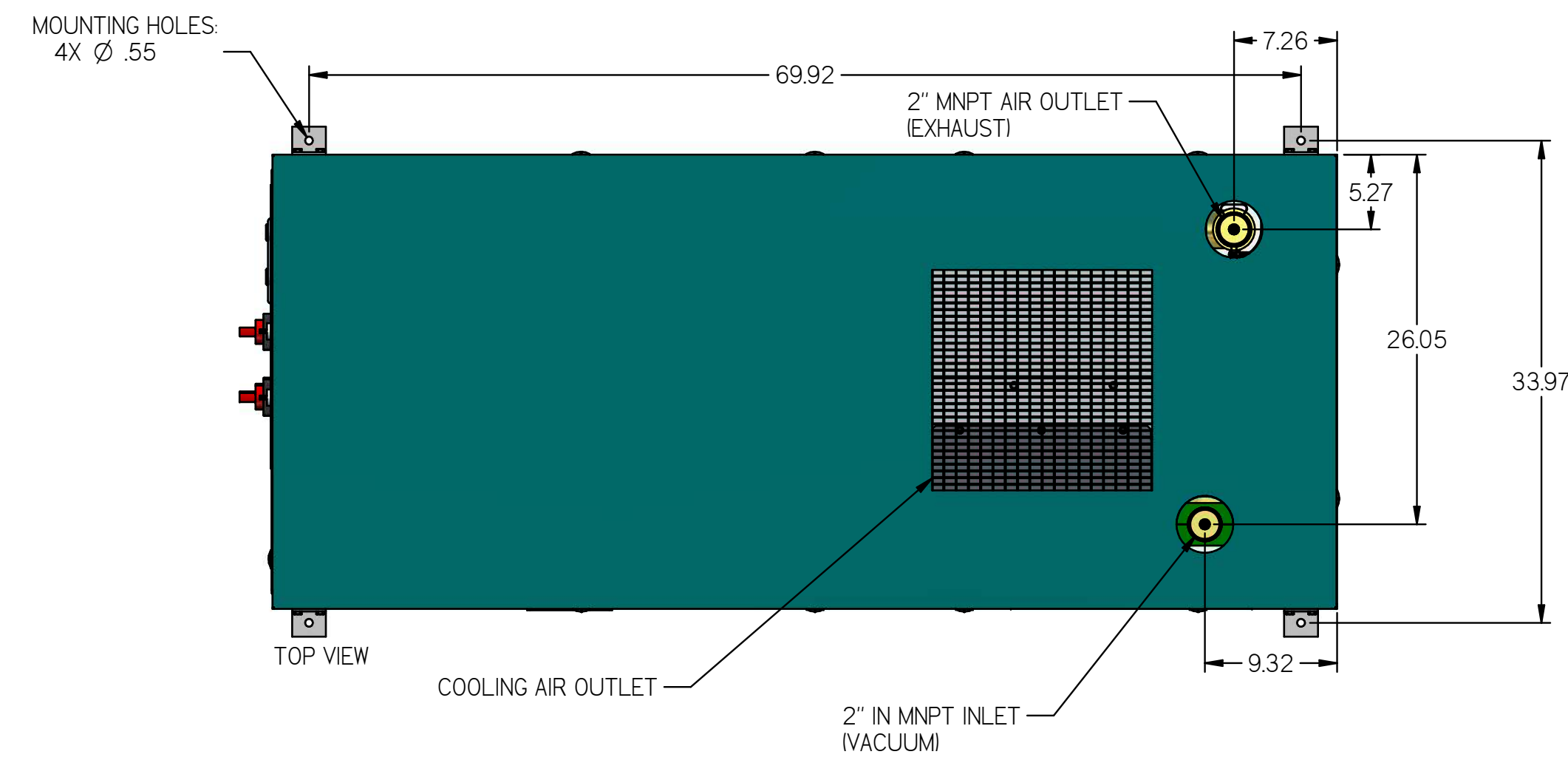


# LVED0407

## LAB SMALL 5 HP DUPLEX VACUUM ENCLOSURE NO TANK

REVISION NOTES		
DESCRIPTION	ECN	PR/NOR
PRODUCTION RELEASE	PXEC0099	N/A



- NOTES:
- APPROX SYSTEM WEIGHT: 1525 LB
  - 24" MINIMUM MAINTENANCE CLEARANCE RECOMMENDED ALL SIDES. CLEARANCE FOR CONTROL PANEL SHALL BE IN ACCORDANCE WITH OSHA/NEC REQUIREMENTS

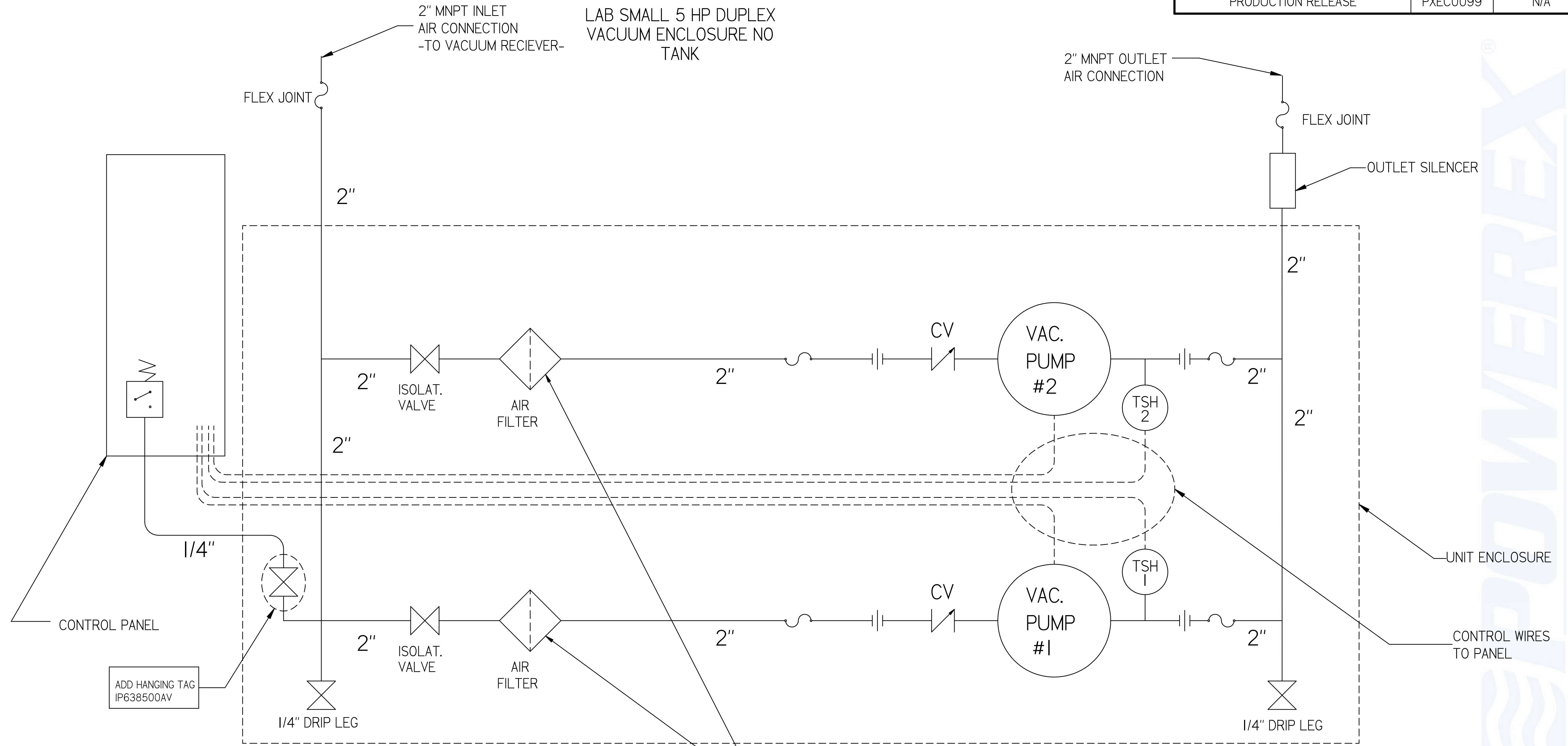
SYMBOL LEGEND		DRAWINGS TO CONFORM TO CURRENT REVISION OF THE FOLLOWING ANSI STANDARDS:		
TOLERANCES NOT SPECIFIED		Y14.3 MULTI AND SECTIONAL VIEW DIMS		
D.XXX ± .05		Y14.5 DIMENSIONING AND TOLERANCING		
D.XXX ± .005		DO NOT SCALE DRAWING FOR DIMENSIONS		
∠ ± .1		SHEET 1 OF 2		
INCH		SCALE 1:10		
<small>CONFIDENTIAL DISCLOSURE</small> This drawing is the property of POWEREX of the SCOTT FETTER COMPANY and is subject to return on demand. Its contents are confidential and must not be copied or submitted to outside parties for use or examination.		AUTHOR	ORIGINATION DATE	APPROVALS ON FILE IN PLM
TITLE: <b>717367</b>		ASoulek	11/16/2018	
MATERIAL: SEE COMPONENT DRAWINGS				
DESCRIPTION: LAB SMALL 5 HP DUPLEX VACUUM ENCLOSURE NO TANK		DRAWING NUMBER	REVISION	SIZE
		LVED0407	A	D

POWEREX

# LVED0407

LAB SMALL 5 HP DUPLEX  
VACUUM ENCLOSURE NO  
TANK

REVISION NOTES		
DESCRIPTION	ECN	PR/NOR
PRODUCTION RELEASE	PXEC0099	N/A



ADD HANGING TAG  
IP638500AV

NOTE:  
A 1/4 INCH VENT PLUG IS  
LOCATED IN EACH FILTER HOUSING

LEGEND	
	TEMP. SWITCH
	AIR FILTER
	BALL VALVE
	VACUUM TRANSDUCER
	CHECK VALVE
	FLEX LINE
	UNION

- NOTES:  
 1) TSH - TEMPERATURE SWITCH HIGH  
 2) PER NFPA THE SYSTEM WILL REQUIRE A SOURCE VALVE (SUPPLIED BY OTHERS).  
 3) OUTLET SILENCER AND FLEX HOSES SHIP LOOSE FOR FIELD INSTALLATION.

SYMBOL LEGEND		DRAWINGS TO CONFORM TO CURRENT REVISION OF THE FOLLOWING ANSI STANDARDS: Y14.3 MULTI-VIEW AND SECTIONAL VIEW DWGS Y14.5 DIMENSIONING AND TOLERANCING	
TOLERANCES NOT SPECIFIED:	SOLID EDGE DRAWING	DO NOT SCALE DRAWING FOR DIMENSIONS	
0.001 ± .005	INCH	SHEET 2 OF 2	SCALE 1:1
0.005 ± .005		APPROVALS ON FILE IN PLM	
<small>CONFIDENTIAL DISCLOSURE</small> This drawing is the property of POWEREX or the SCOTT FETTER COMPANY and is subject to return on demand. Its contents are confidential and must not be copied or submitted to outside parties for use or examination.		A Soulek	11/16/2018
TITLE: 717367 MATERIAL: SEE COMPONENT DRAWINGS	 150 PRODUCTION DRIVE, HARRISON OH 45030 (888) 768-7079		DRAWING NUMBER: LVED0407
DESCRIPTION: LAB SMALL 5 HP DUPLEX VACUUM ENCLOSURE NO TANK		REVISION: A	SIZE: D