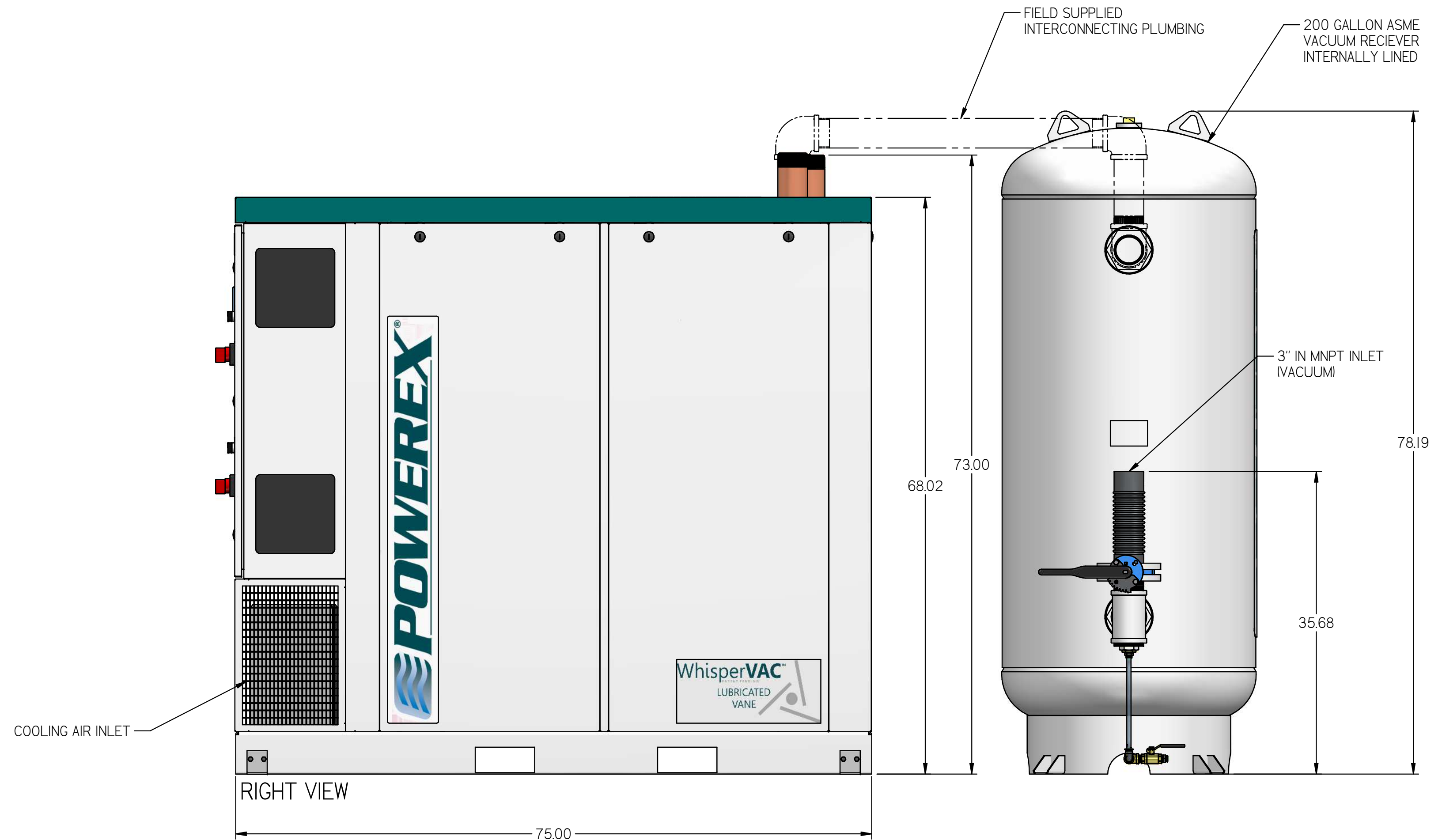
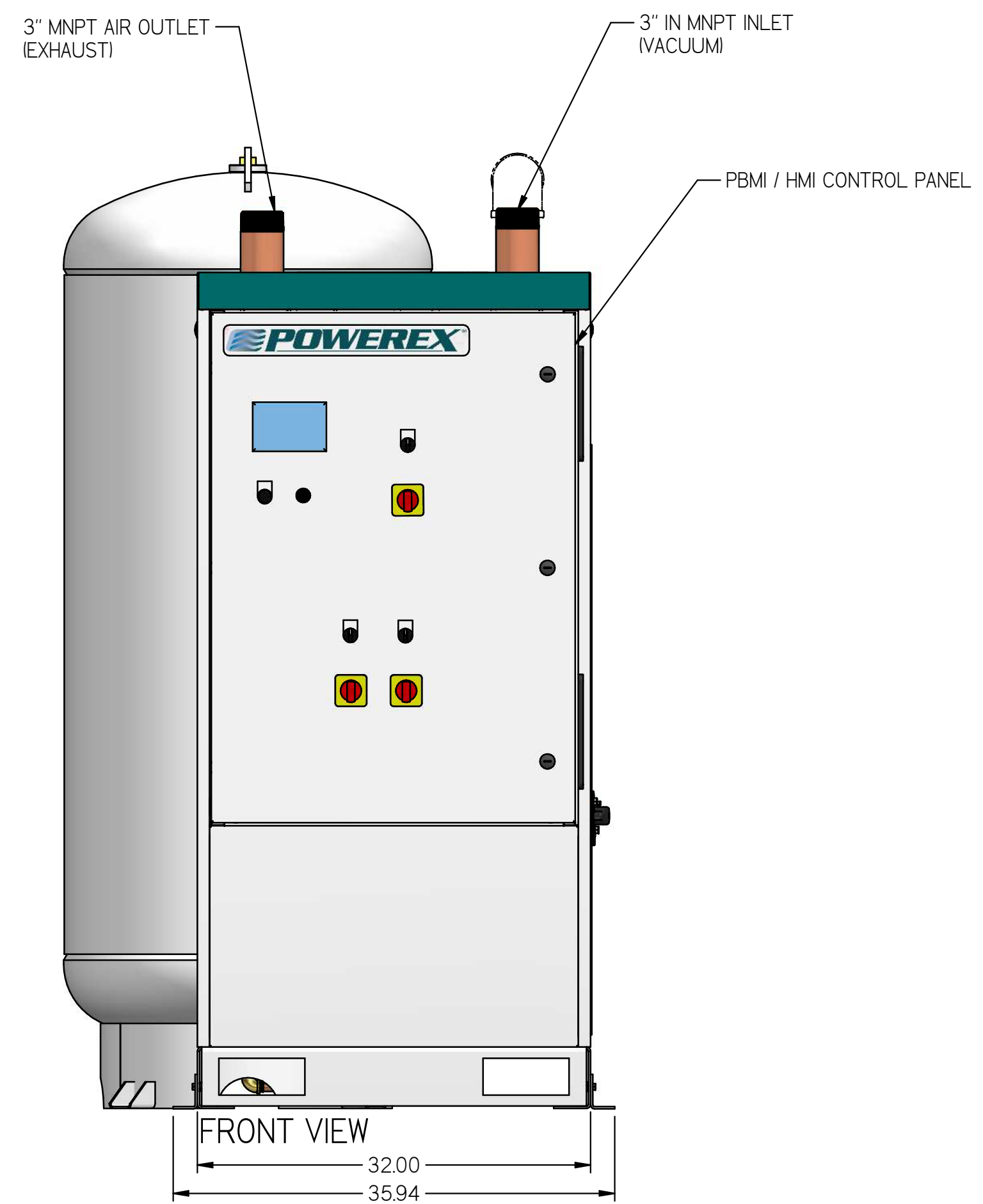
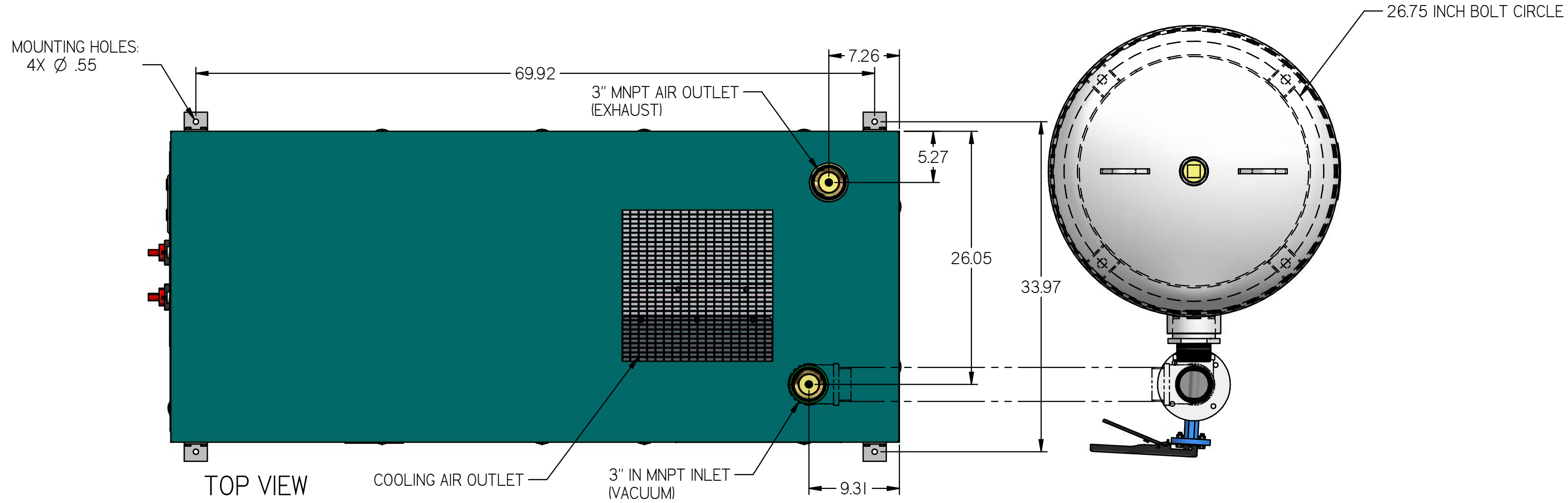
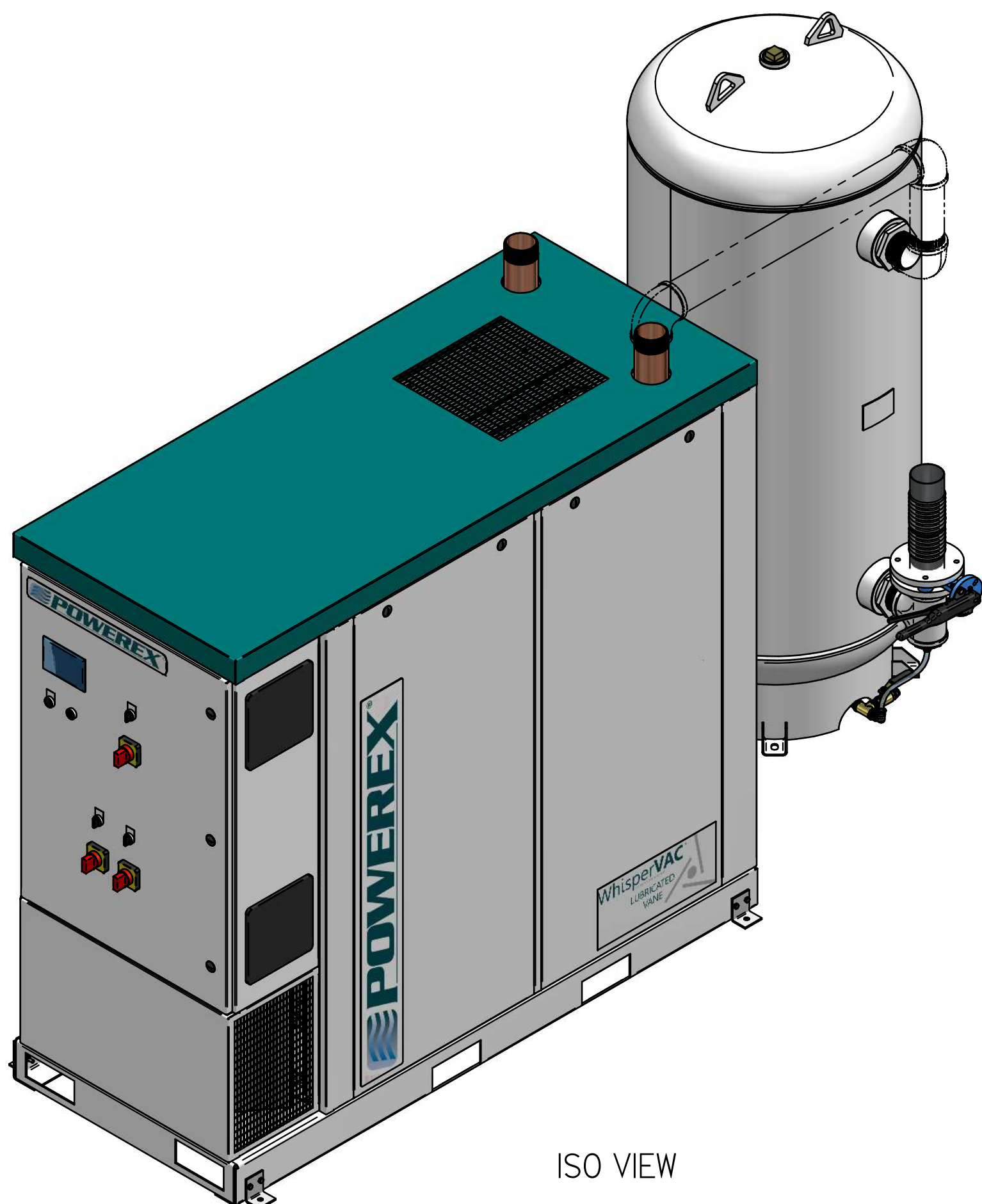


REVISION NOTES		
DESCRIPTION	ECN	PR/NOR
PRODUCTION RELEASE	PXEC0099	N/A

LVED0755

LAB 7.5 HP DUPLEX VANE
VACUUM ENCLOSURE 200G
TANK



NOTES:
 1. APPROX SYSTEM WEIGHT: 2463 LB
 2. 24" MINIMUM MAINTENANCE CLEARANCE RECOMMENDED ALL SIDES. CLEARANCE FOR CONTROL PANEL SHALL BE IN ACCORDANCE WITH OSHA/NEC REQUIREMENTS

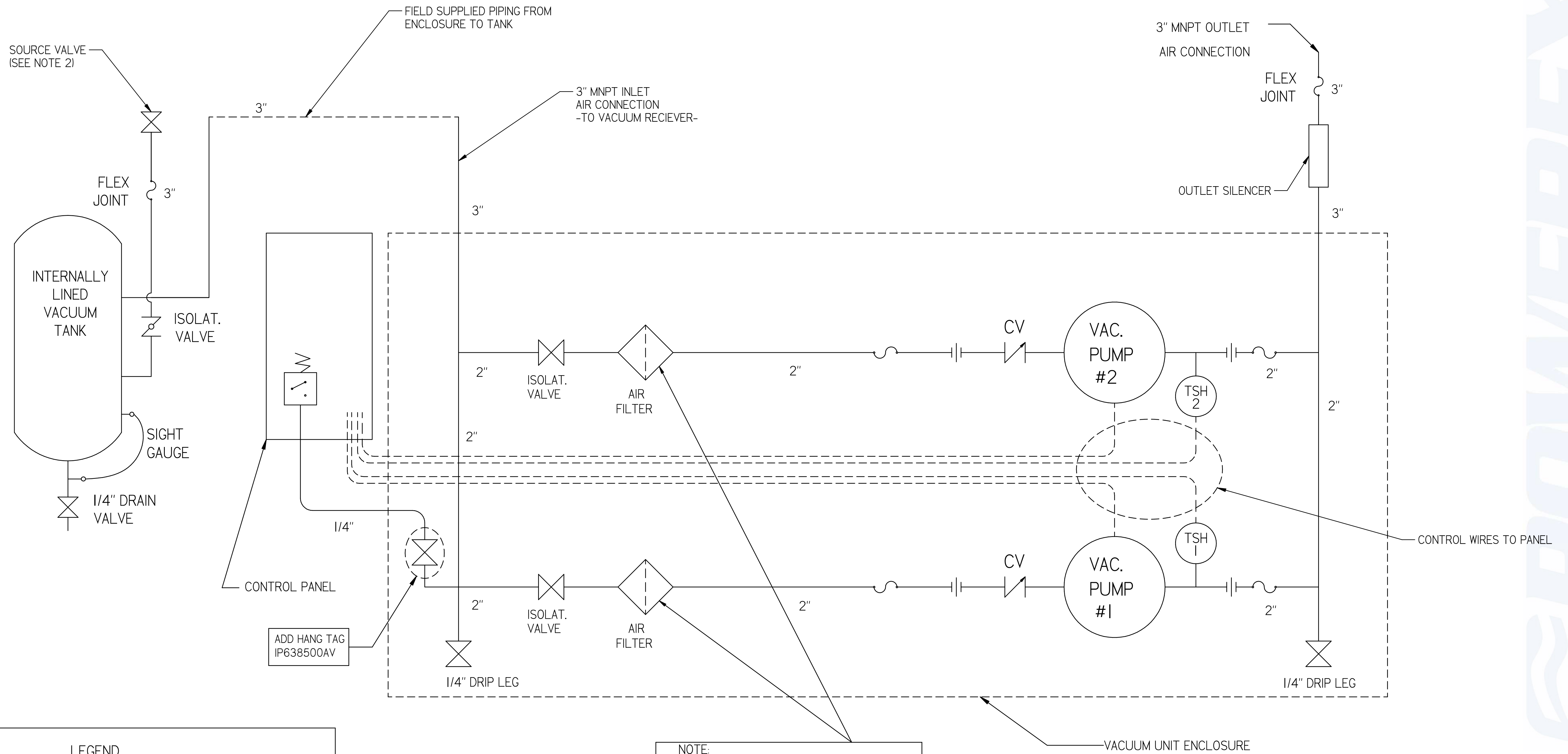
SYMBOL LEGEND		DRAWINGS TO CONFORM TO CURRENT REVISION OF THE FOLLOWING ANSI STANDARDS: Y14.3 MULTI AND SECTIONAL VIEW DIMS Y14.5 DIMENSIONING AND TOLERANCING	
TOLERANCES NOT SPECIFIED	SOLID EDGE DRAWING	DO NOT SCALE DRAWING FOR DIMENSIONS	
0.XXX ± .05	INCH	SHEET 1 OF 2	SCALE 1:10
0.XXX ± .005		APPROVALS ON FILE IN PLM	
CONFIDENTIAL DISCLOSURE This drawing is the property of POWEREX of the SCOTT FETTER COMPANY and is subject to return on demand. Its contents are confidential and must not be copied or submitted to outside parties for use or examination.		AUTHOR	ORIGINATION DATE
PART NUMBER: 717465		ASoulek	2/7/2019
MATERIAL: SEE COMPONENT DRAWINGS		APPROVALS ON FILE IN PLM	
DESCRIPTION: LAB 7.5 HP DUPLEX VANE VACUUM ENCLOSURE 200G TANK		DRAWING NUMBER: LVED0755	REVISION: B
			SIZE: D



LVED0755

LAB 7.5 HP DUPLEX VANE VACUUM ENCLOSURE 200G TANK

REVISION NOTES		
DESCRIPTION	ECN	PR/NOR
PRODUCTION RELEASE	PXEC0099	N/A



LEGEND	
(TSH)	TEMP. SWITCH
◇	AIR FILTER
⊗	BALL VALVE
⊠	VACUUM TRANSDUCER
↗	CHECK VALVE
~	FLEX LINE
- -	UNION

NOTE:
A 1/4 INCH VENT PLUG IS
LOCATED IN EACH FILTER HOUSING

- NOTES:
- 1) TSH - TEMPERATURE SWITCH HIGH
 - 2) PER NFPA THE SYSTEM WILL REQUIRE A SOURCE VALVE (SUPPLIED BY OTHERS).
 - 3) OUTLET SILENCER AND FLEX HOSES SHIP LOOSE FOR FIELD INSTALLATION.

SYMBOL LEGEND		DRAWINGS TO CONFORM TO CURRENT REVISION OF THE FOLLOWING ANSI STANDARDS: Y14.3 MULTI AND SECTIONAL VIEW DIMS Y14.5 DIMENSIONING AND TOLERANCING			
TOLERANCES NOT SPECIFIED	SOLID EDGE DRAWING	DO NOT SCALE DRAWING FOR DIMENSIONS			
0.001 ± .005			SHEET 2 OF 2	SCALE	1:1
0.005 ± .005					
<small>CONFIDENTIAL DISCLOSURE</small> This drawing is the property of POWEREX of the SCOTT FETTER COMPANY and is subject to return on demand. Its contents are confidential and must not be copied or submitted to outside parties for use or examination.		<small>AUTHOR</small> ASoulek	<small>ORIGINATION DATE</small> 2/7/2019	<small>APPROVALS ON FILE IN PLM</small>	
<small>FIGURE</small> 717465					
<small>MATERIAL</small> SEE COMPONENT DRAWINGS	<small>DRAWING NUMBER</small> LVED0755	<small>REVISION</small> B	<small>SIZE</small> D		
<small>DESCRIPTION</small> LAB 7.5 HP DUPLEX VANE VACUUM ENCLOSURE 200G TANK					