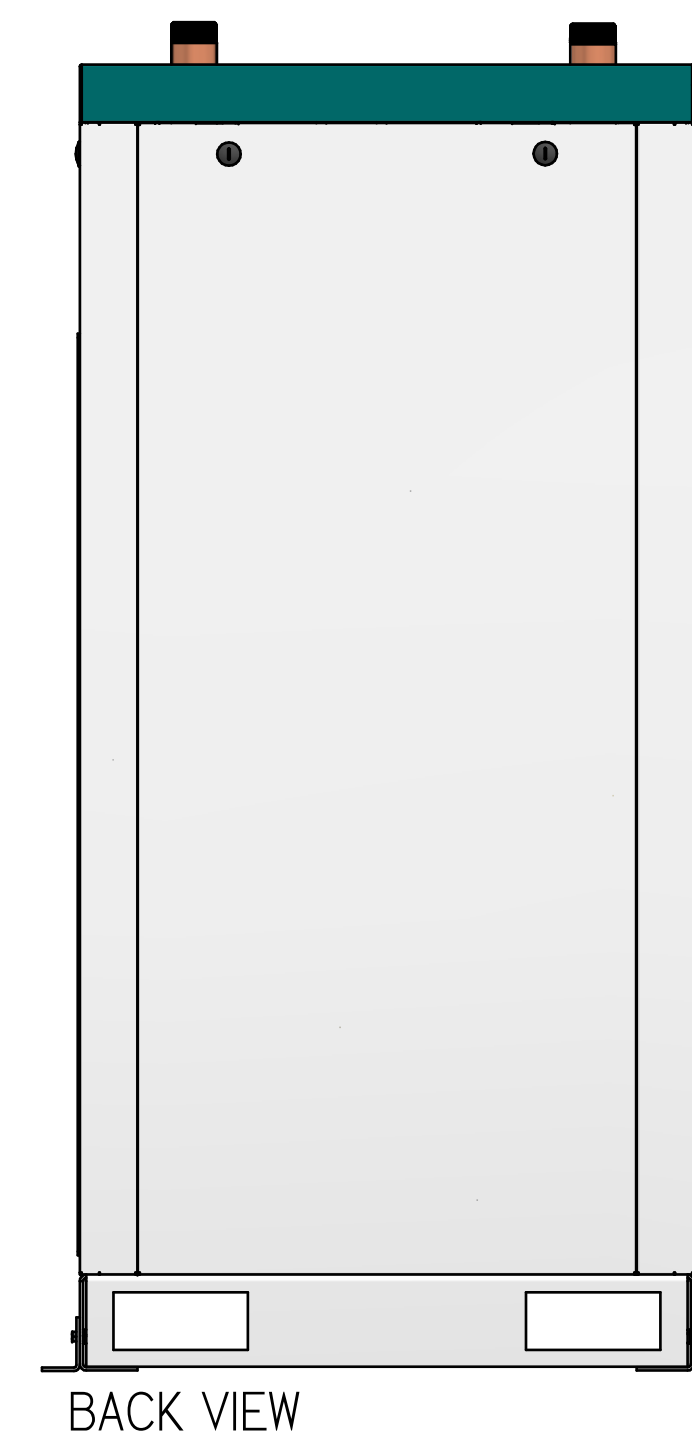
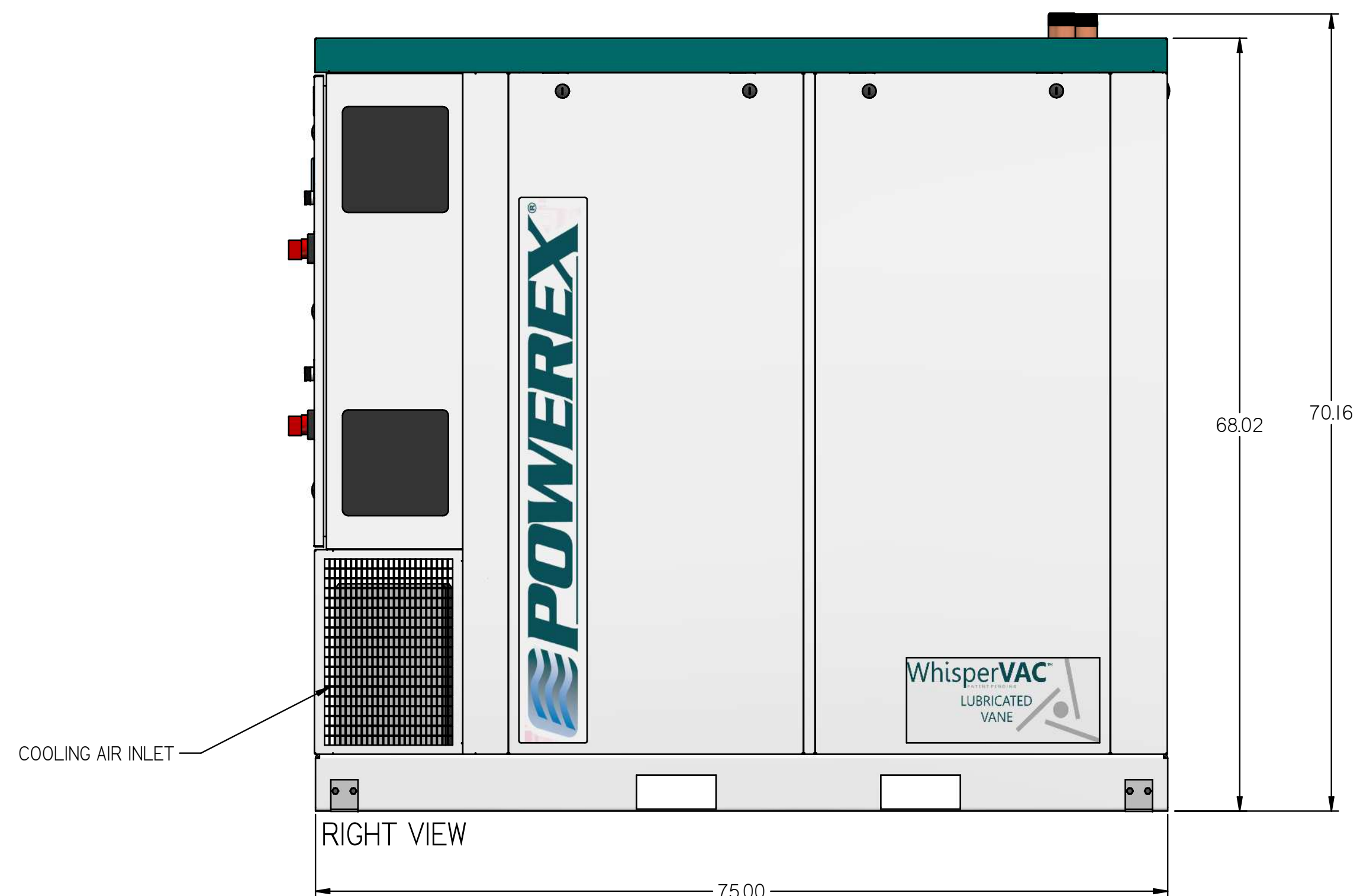
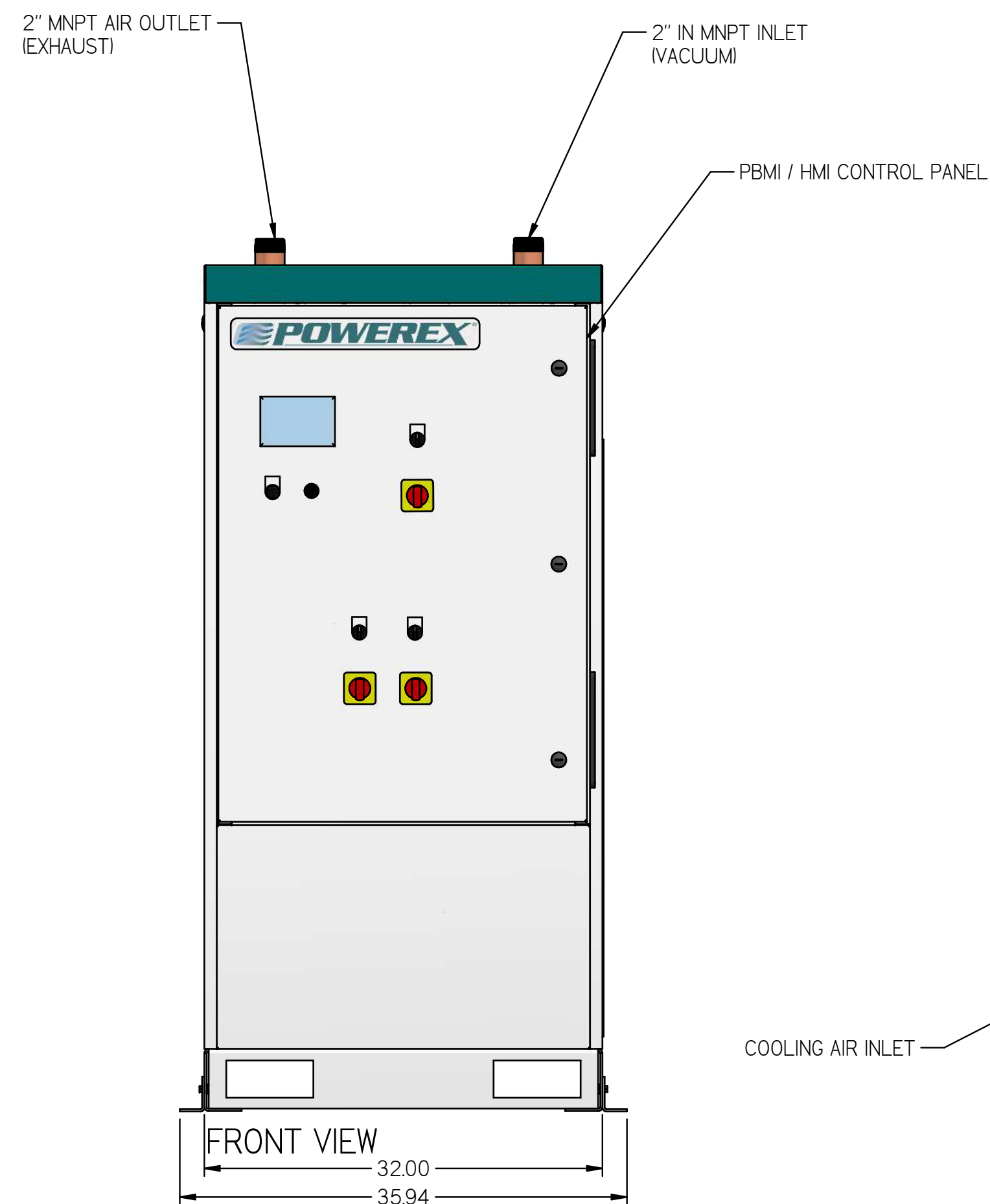
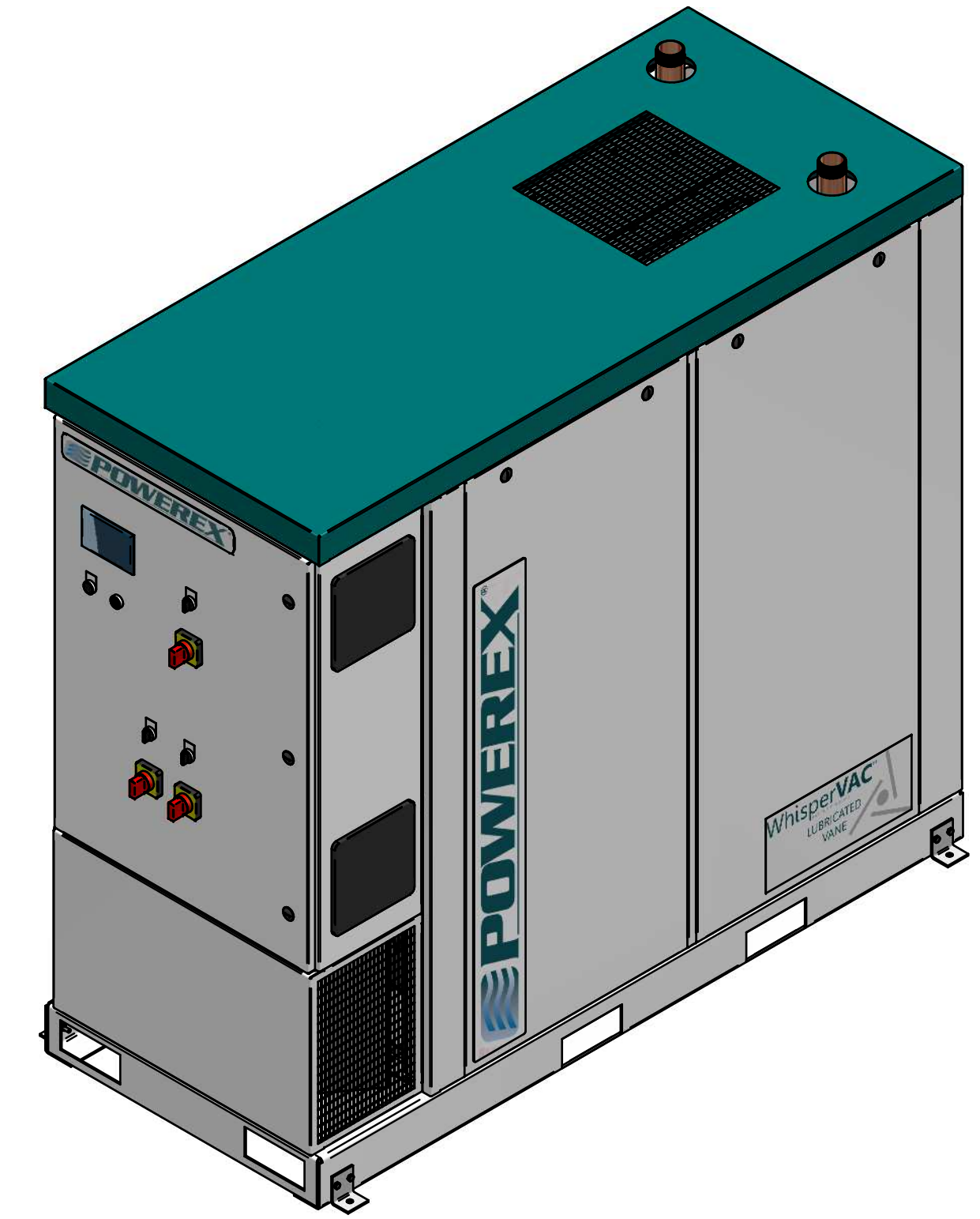
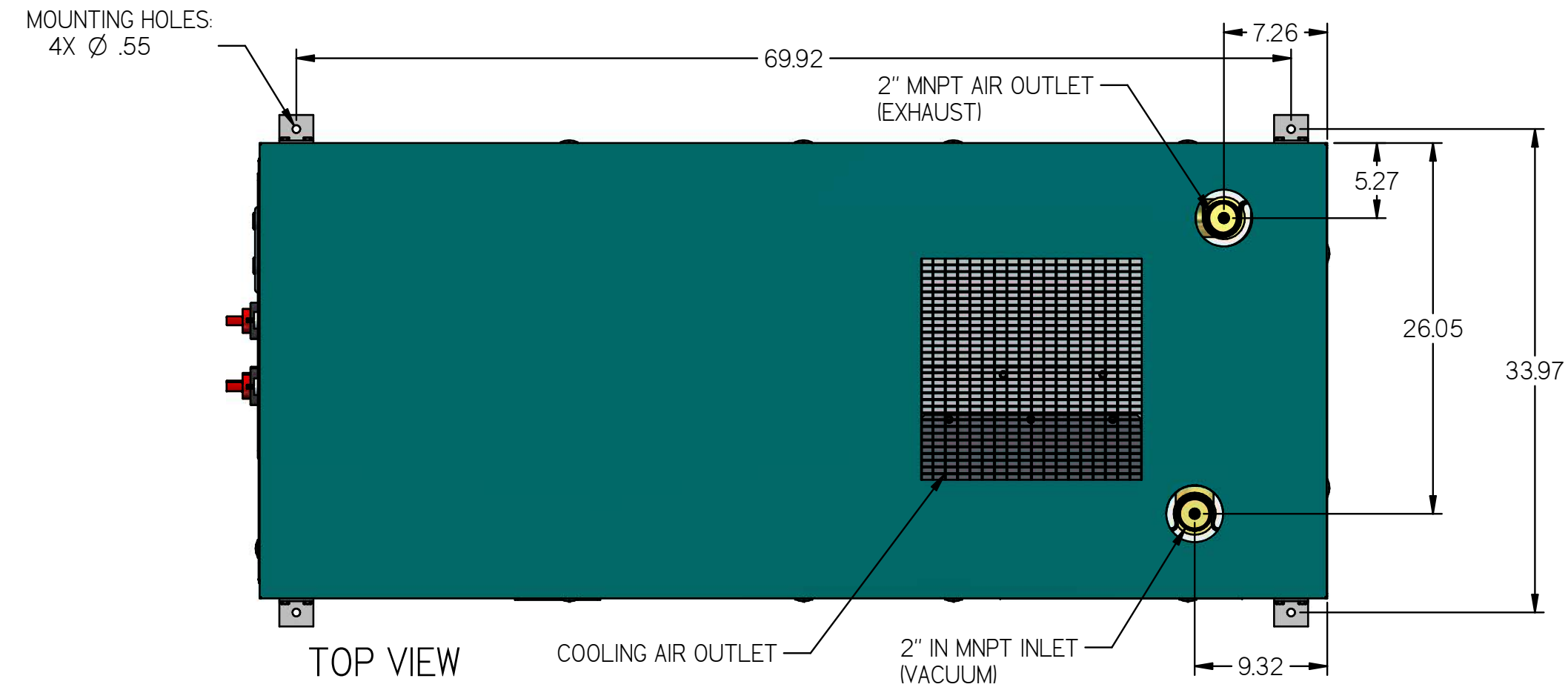


MVED0407

MEDICAL SMALL 5 HP
 DUPLEX VACUUM
 ENCLOSURE NO TANK

REVISION NOTES		
DESCRIPTION	ECN	PR/NOR
PRODUCTION RELEASE	PXEC0099	N/A



- NOTES:
- APPROX SYSTEM WEIGHT: 1524 LB
 - 24" MINIMUM MAINTENANCE CLEARANCE RECOMMENDED ALL SIDES. CLEARANCE FOR CONTROL PANELS SHALL BE IN ACCORDANCE WITH OSHA/NEC REQUIREMENTS

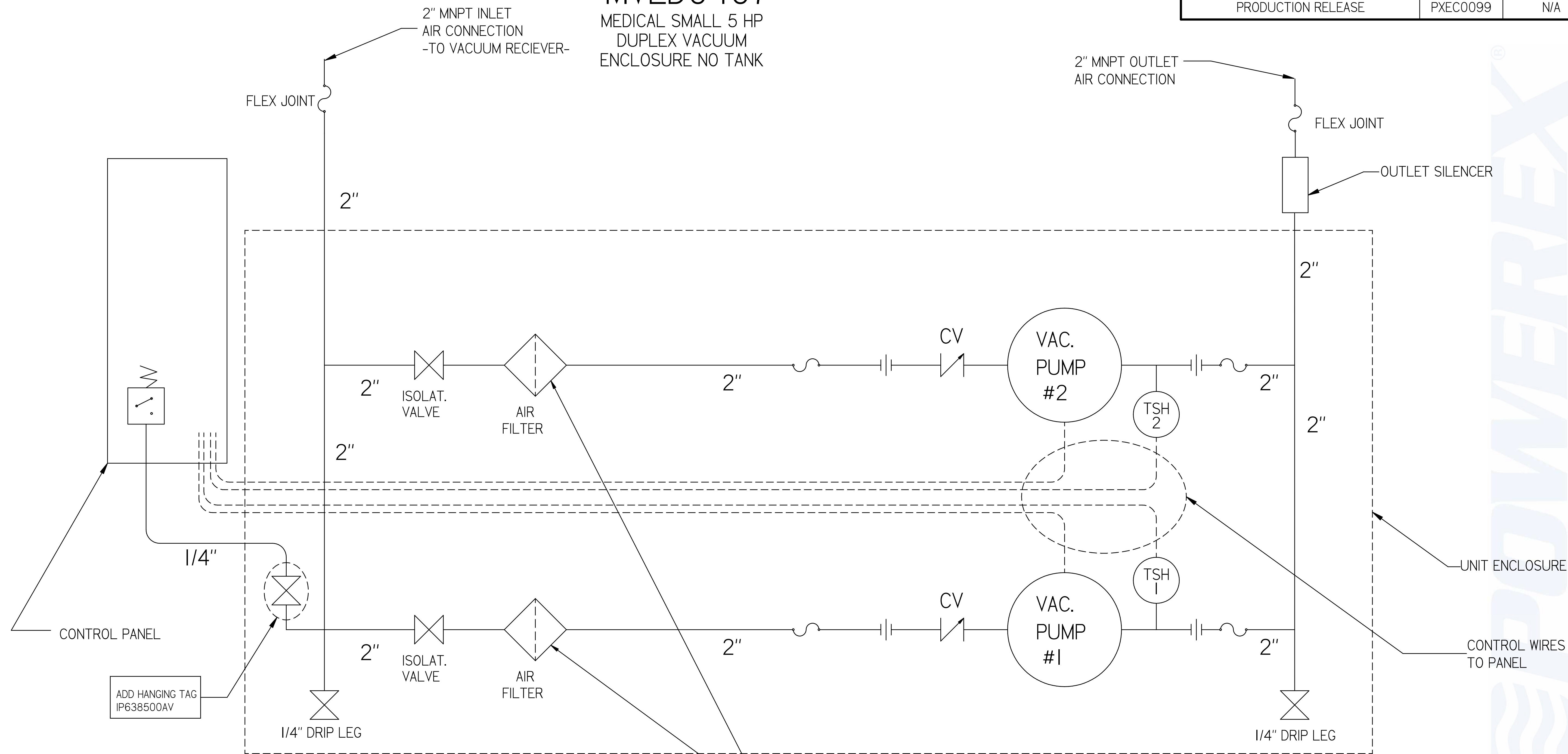
SYMBOL LEGEND		DRAWINGS TO CONFORM TO CURRENT REVISION OF THE FOLLOWING ANSI STANDARDS:	
TOLERANCES NOT SPECIFIED:		Y14.3 MULTI AND SECTIONAL VIEW DIMS	
0.XXX ± .05	SOLID EDGE DRAWING	Y14.5 DIMENSIONING AND TOLERANCING	
0.XXX ± .005		DO NOT SCALE DRAWING FOR DIMENSIONS	
		SHEET 1 OF 2	SCALE 1:10
CONFIDENTIAL DISCLOSURE: This drawing is the property of POWEREX of the SCOTT FETTER COMPANY and is subject to return on demand. Its contents are confidential and must not be copied or submitted to outside parties for use or examination.		AUTHOR	APPROVALS ON FILE IN PLM
TITLE: 717366		ORIGINATION DATE	
MATERIAL: SEE COMPONENT DRAWINGS		ASoulek	11/9/2018
DESCRIPTION: MEDICAL SMALL 5 HP DUPLEX VACUUM ENCLOSURE NO TANK			
DRAWING NUMBER: MVED0407		REVISION	SIZE
		A	D

POWEREX

MVED0407

MEDICAL SMALL 5 HP
 DUPLEX VACUUM
 ENCLOSURE NO TANK

REVISION NOTES		
DESCRIPTION	ECN	PR/NOR
PRODUCTION RELEASE	PXEC0099	N/A



CONTROL PANEL

ADD HANGING TAG
 IP638500AV

NOTE:
 A 1/4 INCH VENT PLUG IS
 LOCATED IN EACH FILTER HOUSING

LEGEND	
	TEMP. SWITCH
	AIR FILTER
	BALL VALVE
	VACUUM TRANSDUCER
	CHECK VALVE
	FLEX LINE
	UNION

NOTES:
 1) TSH - TEMPERATURE SWITCH HIGH
 2) PER NFPA THE SYSTEM WILL REQUIRE A SOURCE VALVE (SUPPLIED BY OTHERS).
 3) OUTLET SILENCER AND FLEX HOSES SHIP LOOSE FOR FIELD INSTALLATION.

SYMBOL LEGEND		DRAWINGS TO CONFORM TO CURRENT REVISION OF THE FOLLOWING ANSI STANDARDS: Y14.3 MULTI AND SECTIONAL VIEW DIMS Y14.5 DIMENSIONING AND TOLERANCING	
TOLERANCES NOT SPECIFIED	SOLID EDGE DRAWING	DO NOT SCALE DRAWING FOR DIMENSIONS	
0.001 ± .005	INCH	SHEET 2 OF 2	SCALE 1:1
0.002 ± .005		APPROVALS ON FILE IN PLM	
<small>CONFIDENTIAL DISCLOSURE</small> This drawing is the property of POWEREX or the SCOTT FETTER COMPANY and is subject to return on demand. Its contents are confidential and must not be copied or submitted to outside parties for use or examination.		AUTHOR	ORIGINATION DATE
TITLE: 717366		ASoulek	11/9/2018
MATERIAL: SEE COMPONENT DRAWINGS			
DESCRIPTION: MEDICAL SMALL 5 HP DUPLEX VACUUM ENCLOSURE NO TANK		DRAWING NUMBER	REVISION
		MVED0407	A
			D