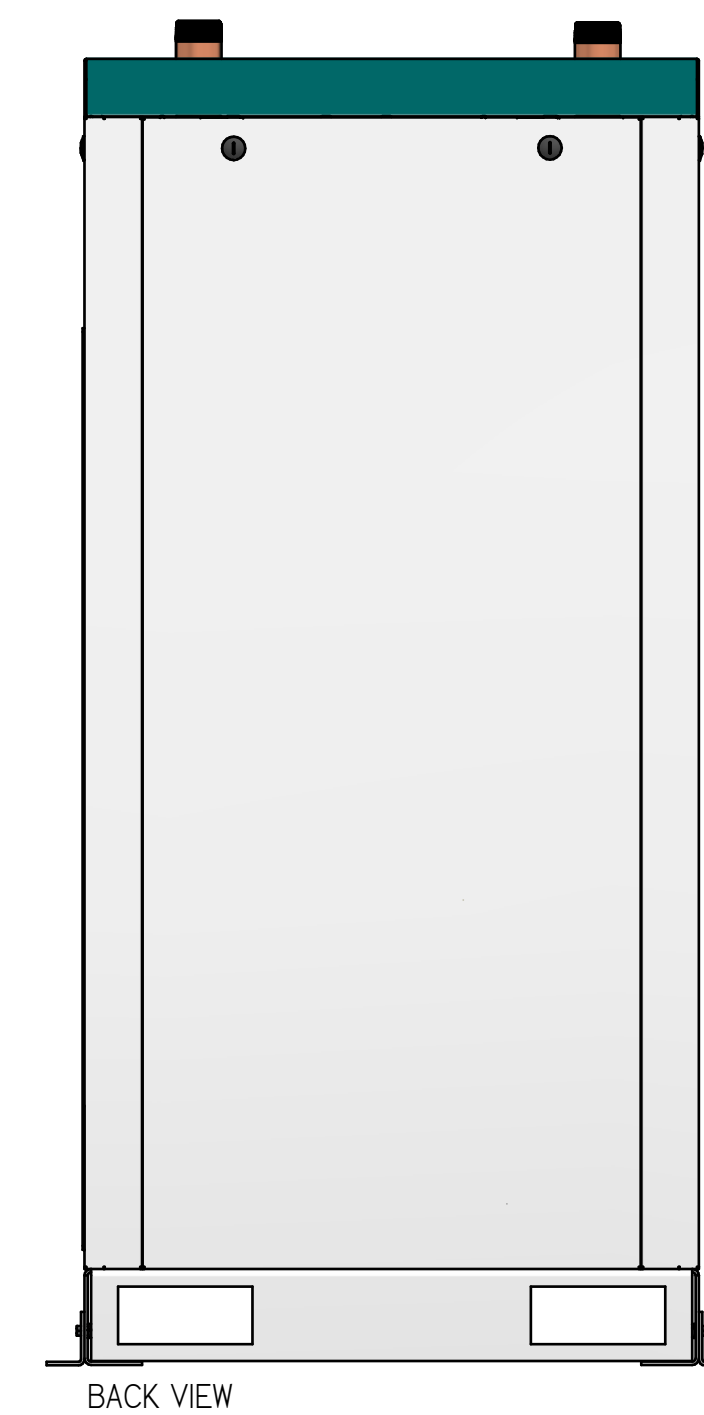
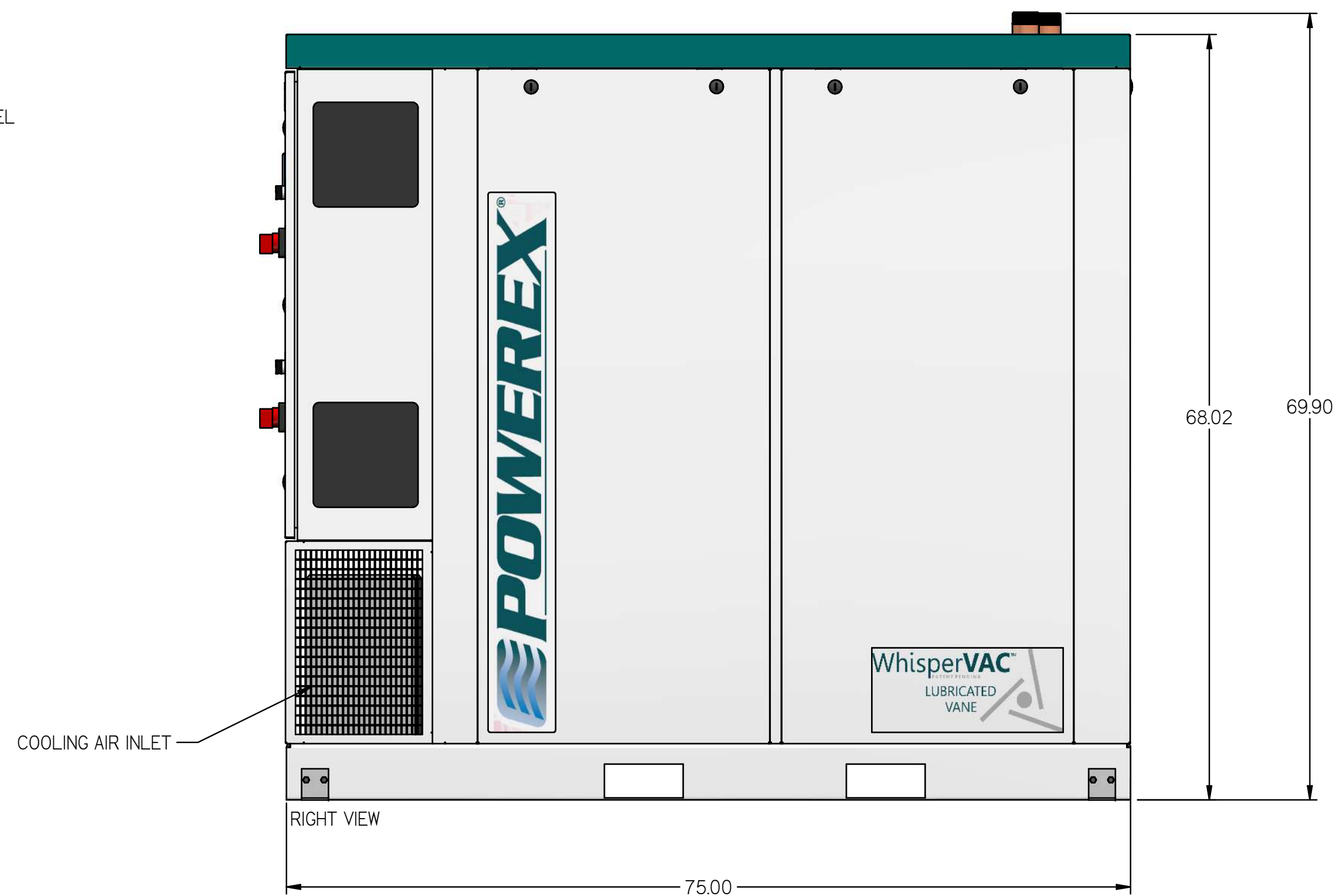
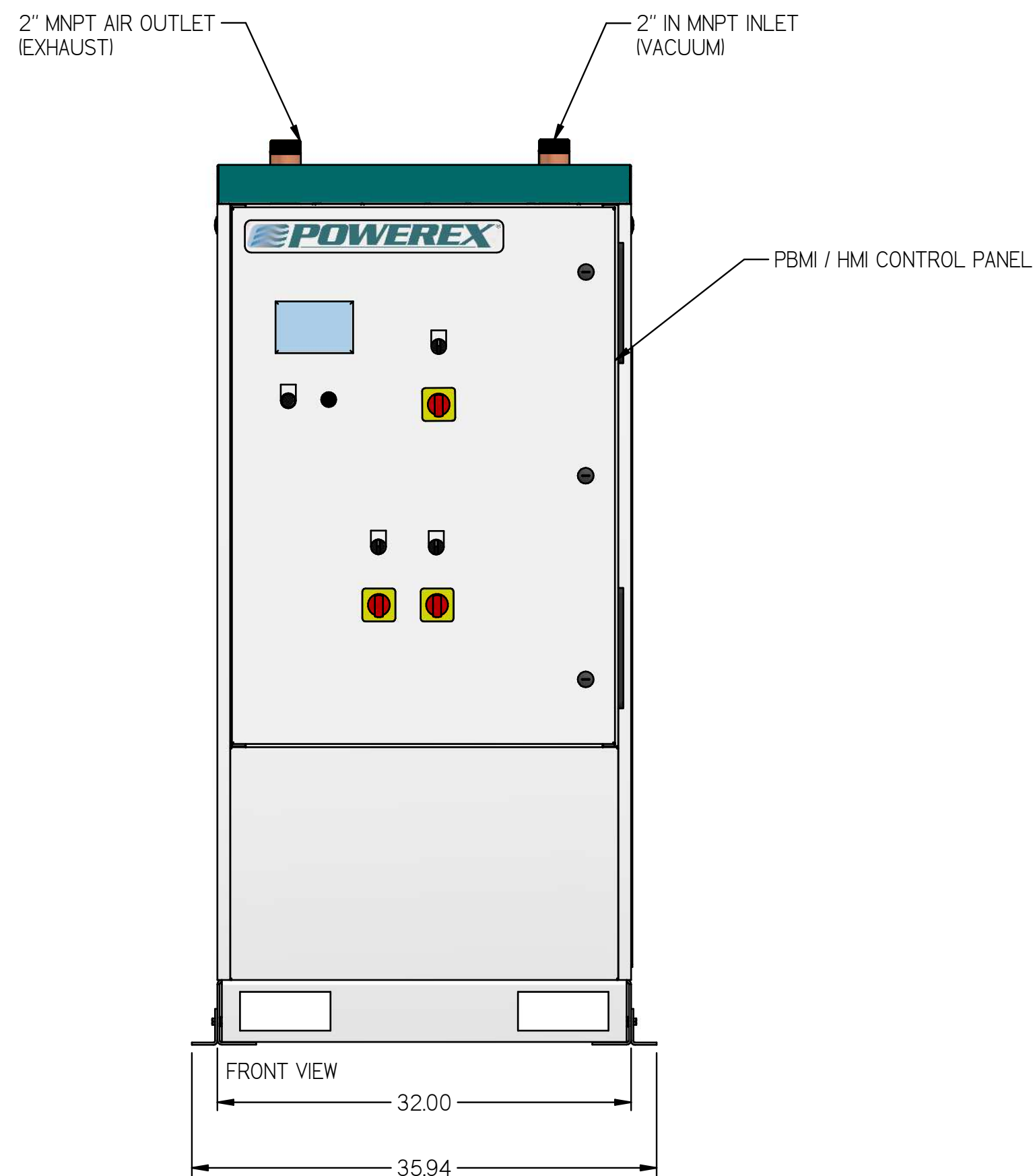
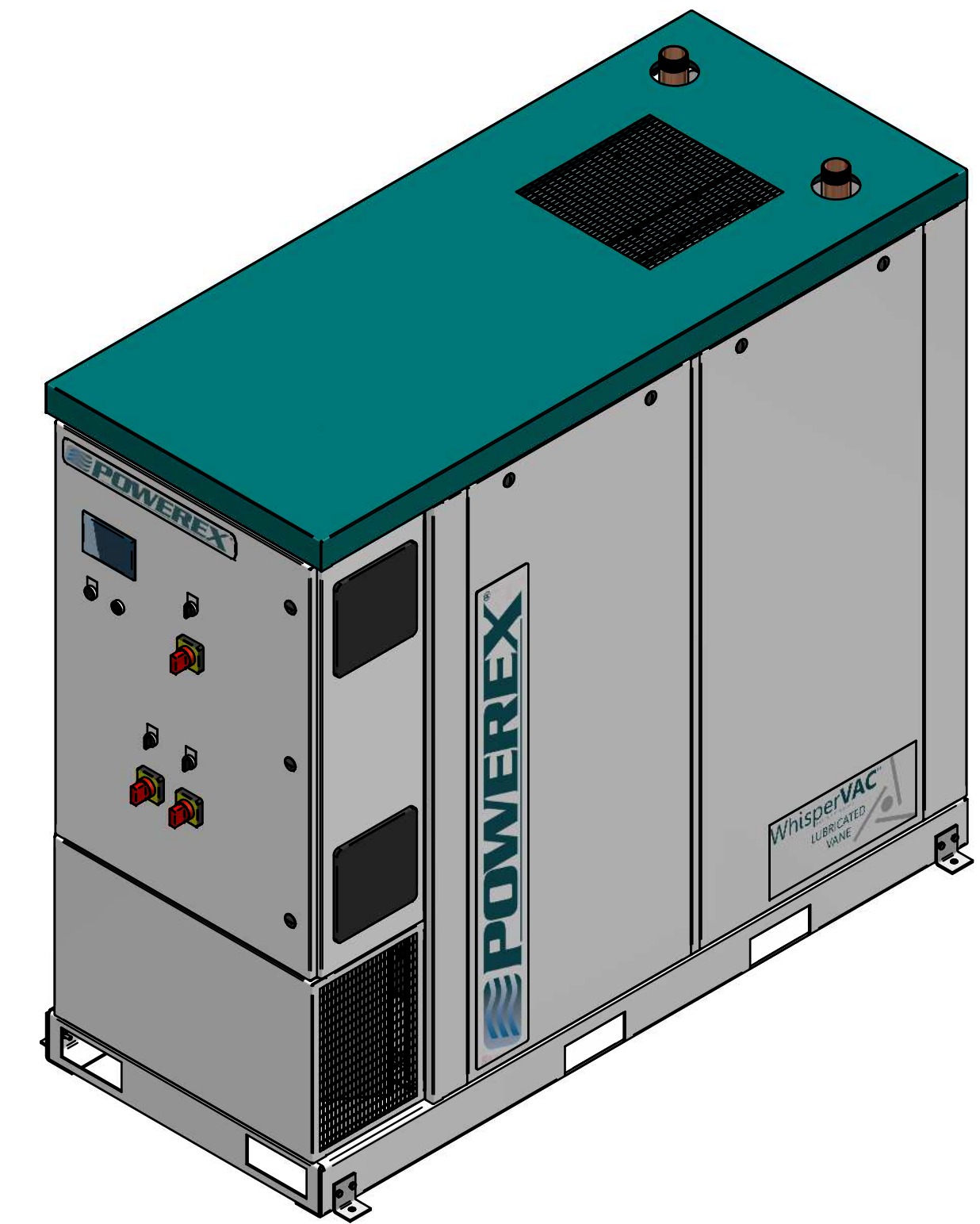
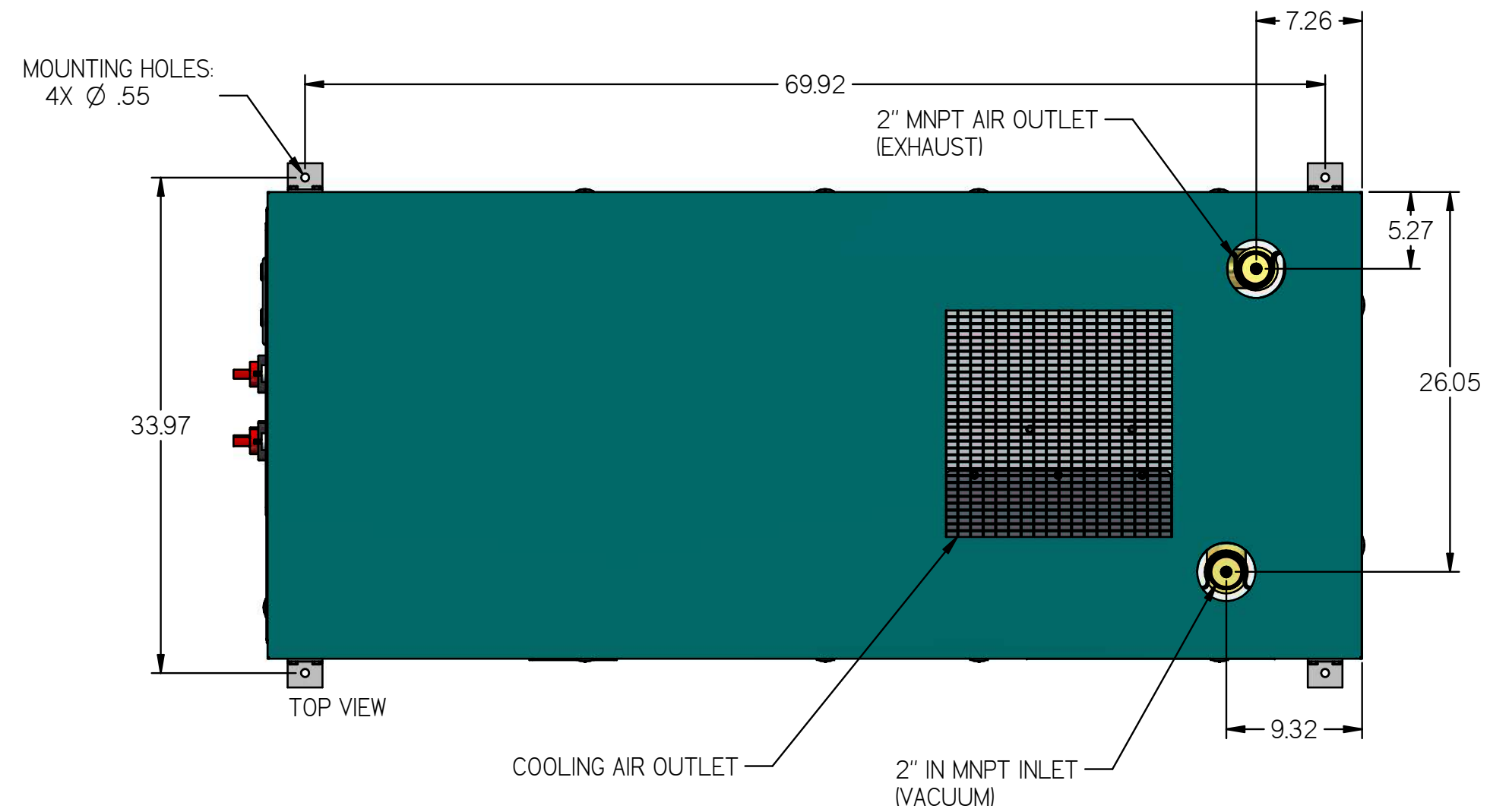


# MVED0507

MEDICAL BIG 5HP DUPLEX  
VANE VAC ENCLOSURE NO  
TANK

REVISION NOTES		
DESCRIPTION	ECN	PR/NOR
PRODUCTION RELEASE	PXEC0099	N/A



- NOTES:
- APPROX SYSTEM WEIGHT: 1539 LB
  - 24" MINIMUM MAINTENANCE CLEARANCE RECOMMENDED ALL SIDES. CLEARANCE FOR CONTROL PANEL SHALL BE IN ACCORDANCE WITH OSHA/NEC REQUIREMENTS

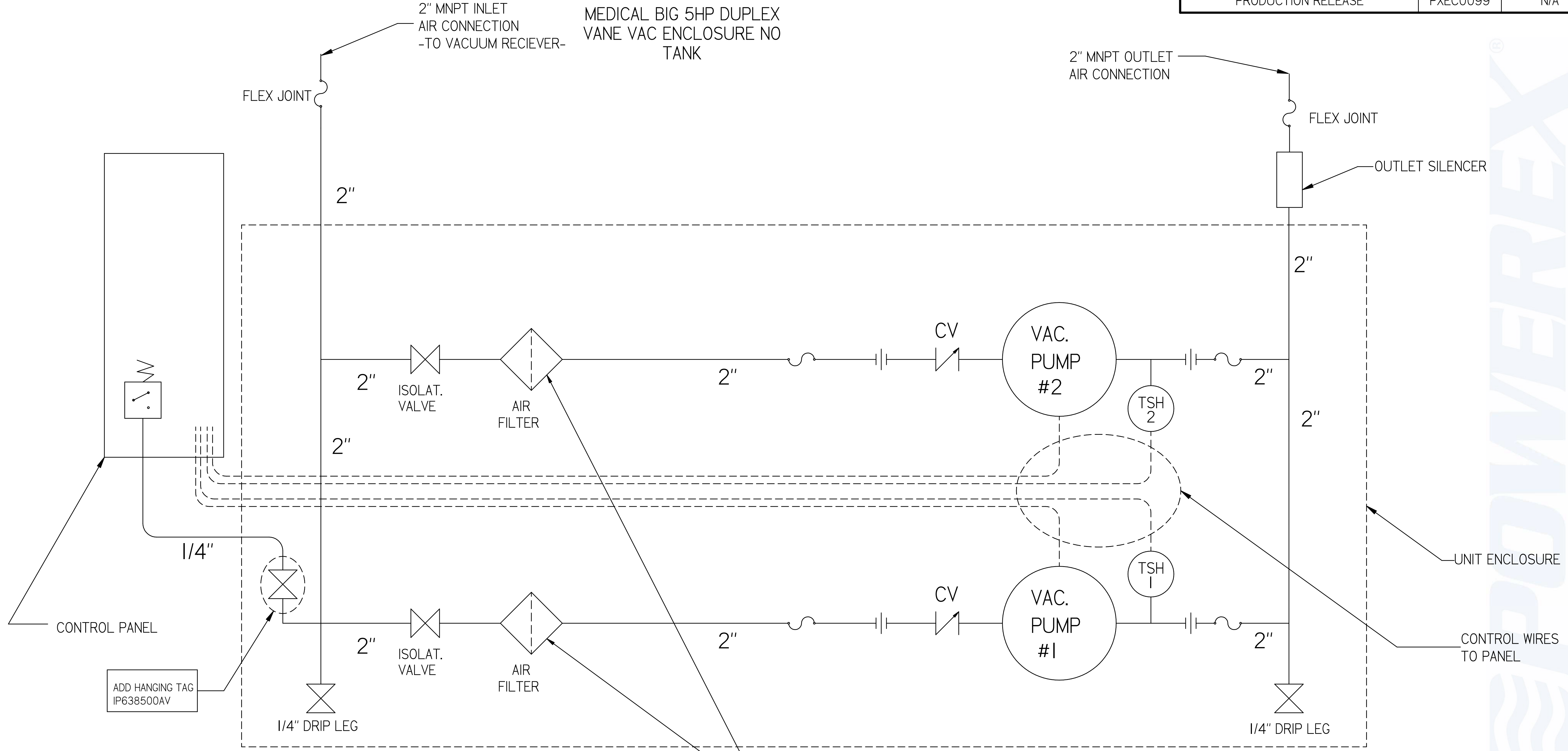
SYMBOL LEGEND		DRAWINGS TO CONFORM TO CURRENT REVISION OF THE FOLLOWING ANSI STANDARDS:		
		Y14.3 MULTI AND SECTIONAL VIEW DIMS		
		Y14.5 DIMENSIONING AND TOLERANCING		
TOLERANCES NOT SPECIFIED	SOLID EDGE DRAWING	DO NOT SCALE DRAWING FOR DIMENSIONS		
0.XXX ± .03		SHEET 1 OF 2	SCALE	I:10
0.XXX ± .005	INH			
<small>CONFIDENTIAL DISCLOSURE</small> This drawing is the property of POWEREX of the SCOTT FETTER COMPANY and is subject to return on demand. Its contents are confidential and must not be copied or submitted to outside parties for use or examination.		AUTHOR	ORIGINATION DATE	APPROVALS ON FILE IN PLM
<small>CONFIDENTIAL DISCLOSURE</small> 717368 MATERIAL: SEE COMPONENT DRAWINGS		ASoulek	11/9/2018	
DESCRIPTION: MEDICAL BIG 5HP DUPLEX VANE VAC ENCLOSURE NO TANK		DRAWING NUMBER MVED0507	REVISION A	SIZE D

POWEREX

# MVED0507

MEDICAL BIG 5HP DUPLEX  
VANE VAC ENCLOSURE NO  
TANK

REVISION NOTES		
DESCRIPTION	ECN	PR/NOR
PRODUCTION RELEASE	PXEC0099	N/A



LEGEND	
TSH	TEMP. SWITCH
	AIR FILTER
	BALL VALVE
	VACUUM TRANSDUCER
	CHECK VALVE
	FLEX LINE
	UNION

NOTE:  
A 1/4 INCH VENT PLUG IS  
LOCATED IN EACH FILTER HOUSING

- NOTES:  
 1) TSH - TEMPERATURE SWITCH HIGH  
 2) PER NFPA THE SYSTEM WILL REQUIRE A SOURCE VALVE (SUPPLIED BY OTHERS).  
 3) OUTLET SILENCER AND FLEX HOSES SHIP LOOSE FOR FIELD INSTALLATION.

SYMBOL LEGEND		DRAWINGS TO CONFORM TO CURRENT REVISION OF THE FOLLOWING ANSI STANDARDS: #14.3 MULTI AND SECTIONAL VIEW DIMS #14.5 DIMENSIONING AND TOLERANCING	
TOLERANCES NOT SPECIFIED	SOLID EDGE DRAWING	DO NOT SCALE DRAWING FOR DIMENSIONS	
0.0XX ± .03	INCH	SHEET 2 OF 2	SCALE 1:1
0.0XX ± .005		APPROVALS ON FILE IN PLM	
<small>CONFIDENTIAL DISCLOSURE</small> This drawing is the property of POWEREX of the SCOTT FETTER COMPANY and is subject to return on demand. Its contents are confidential and must not be copied or submitted to outside parties for use or examination.		AUTHOR	ORIGINATION DATE
DRAWING NUMBER: 717368 MATERIAL: SEE COMPONENT DRAWINGS		ASoulek	11/9/2018
DESCRIPTION: MEDICAL BIG 5HP DUPLEX VANE VAC ENCLOSURE NO TANK			
DRAWING NUMBER: MVED0507		REVISION: A	SIZE: D