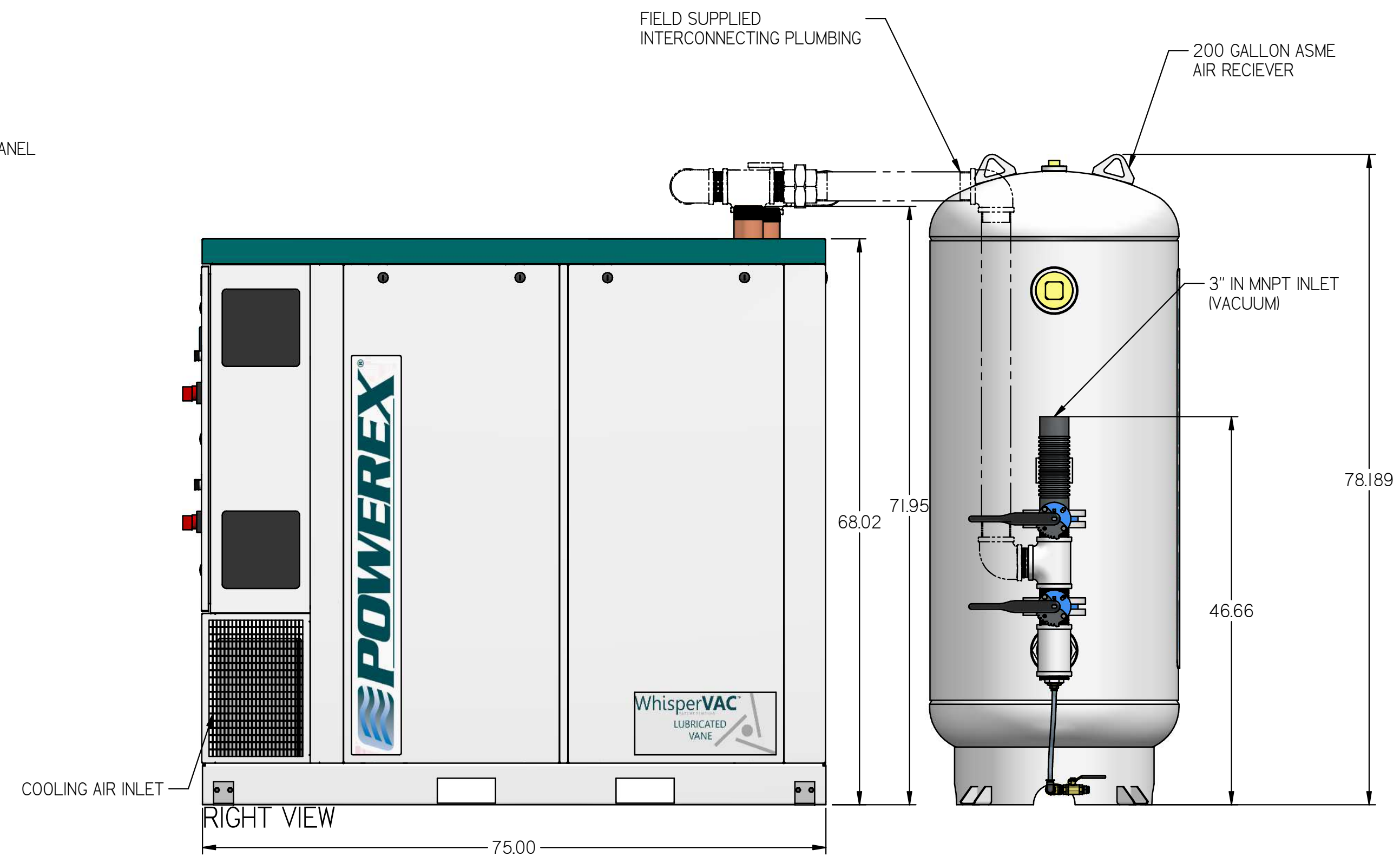
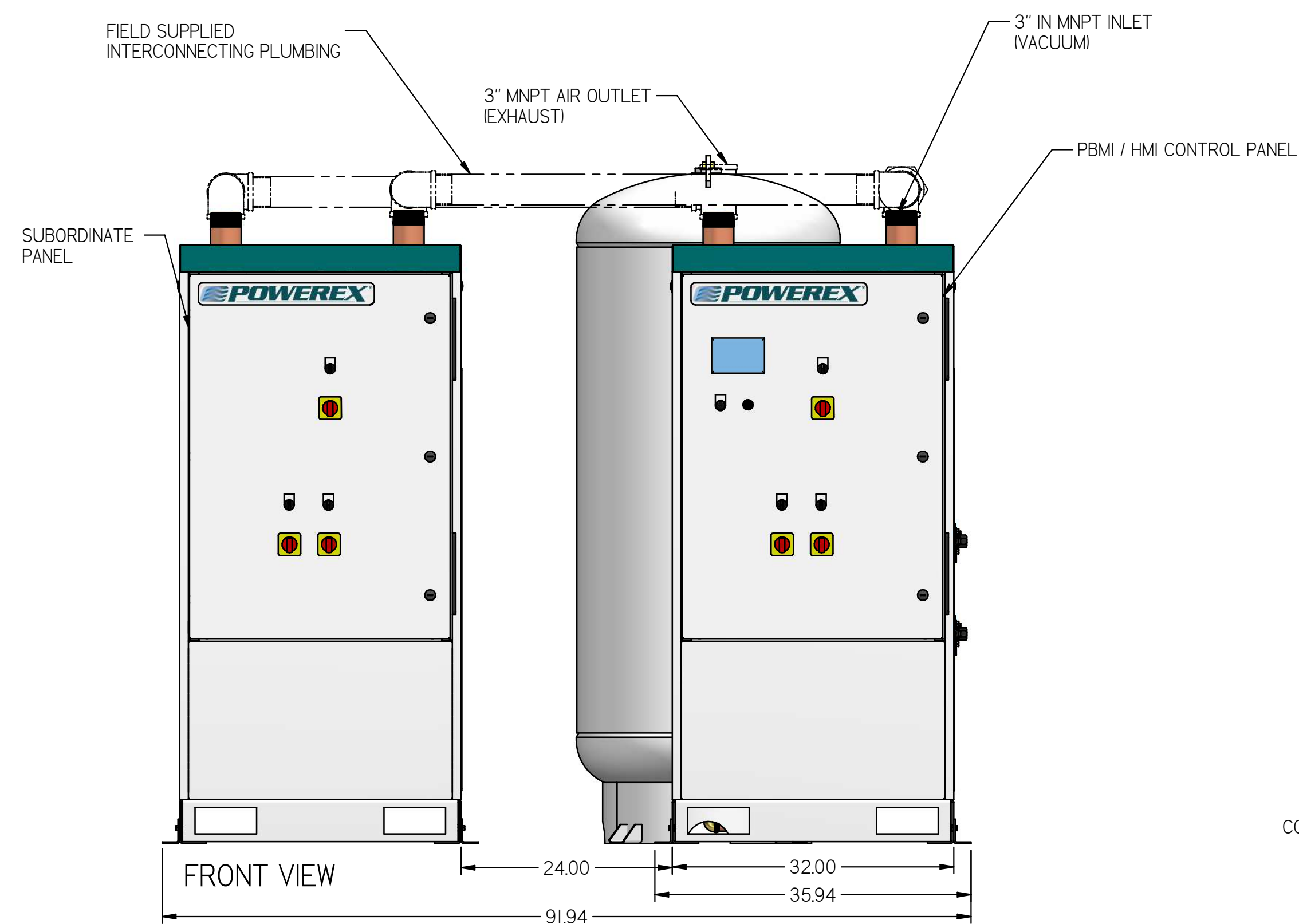
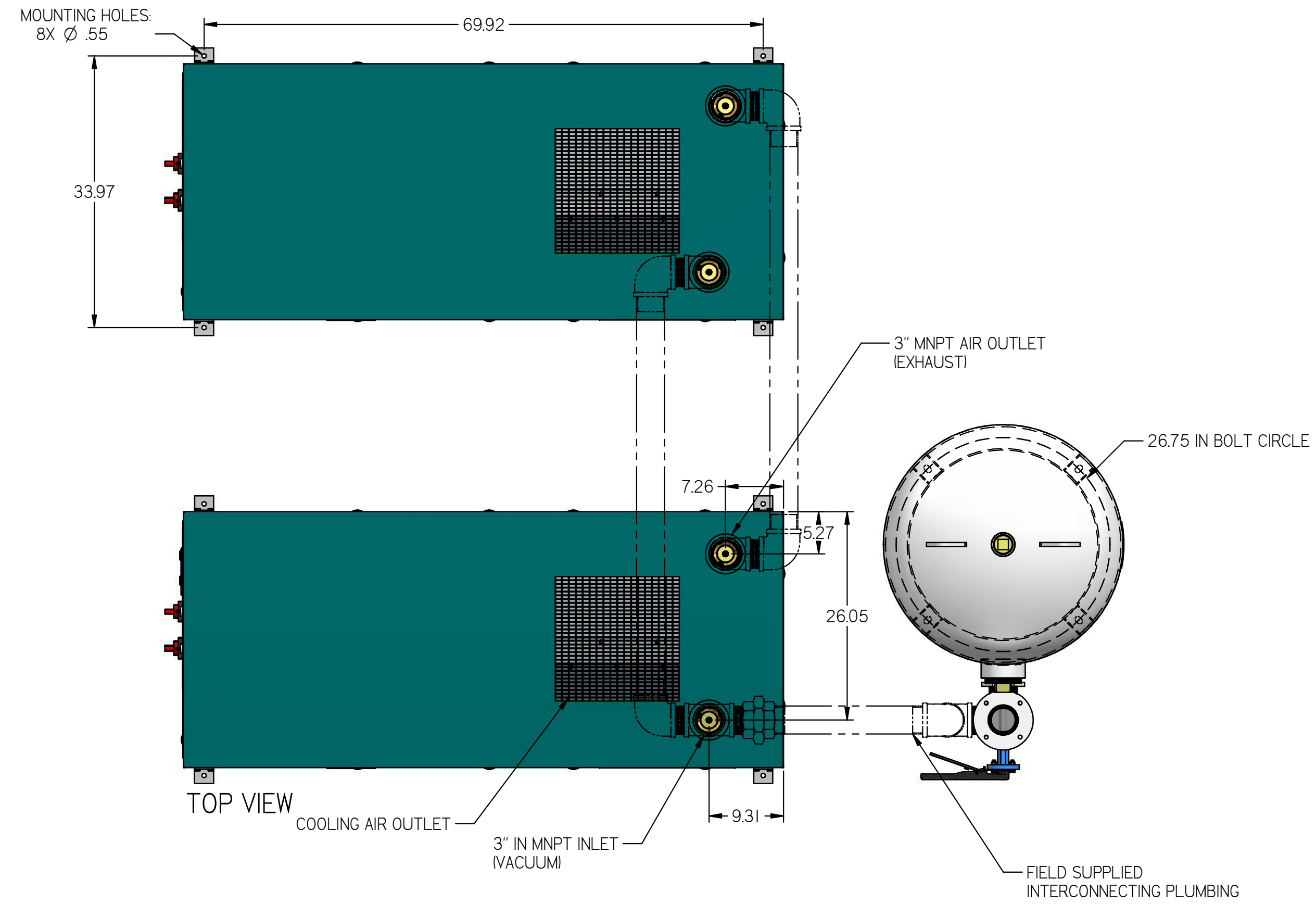
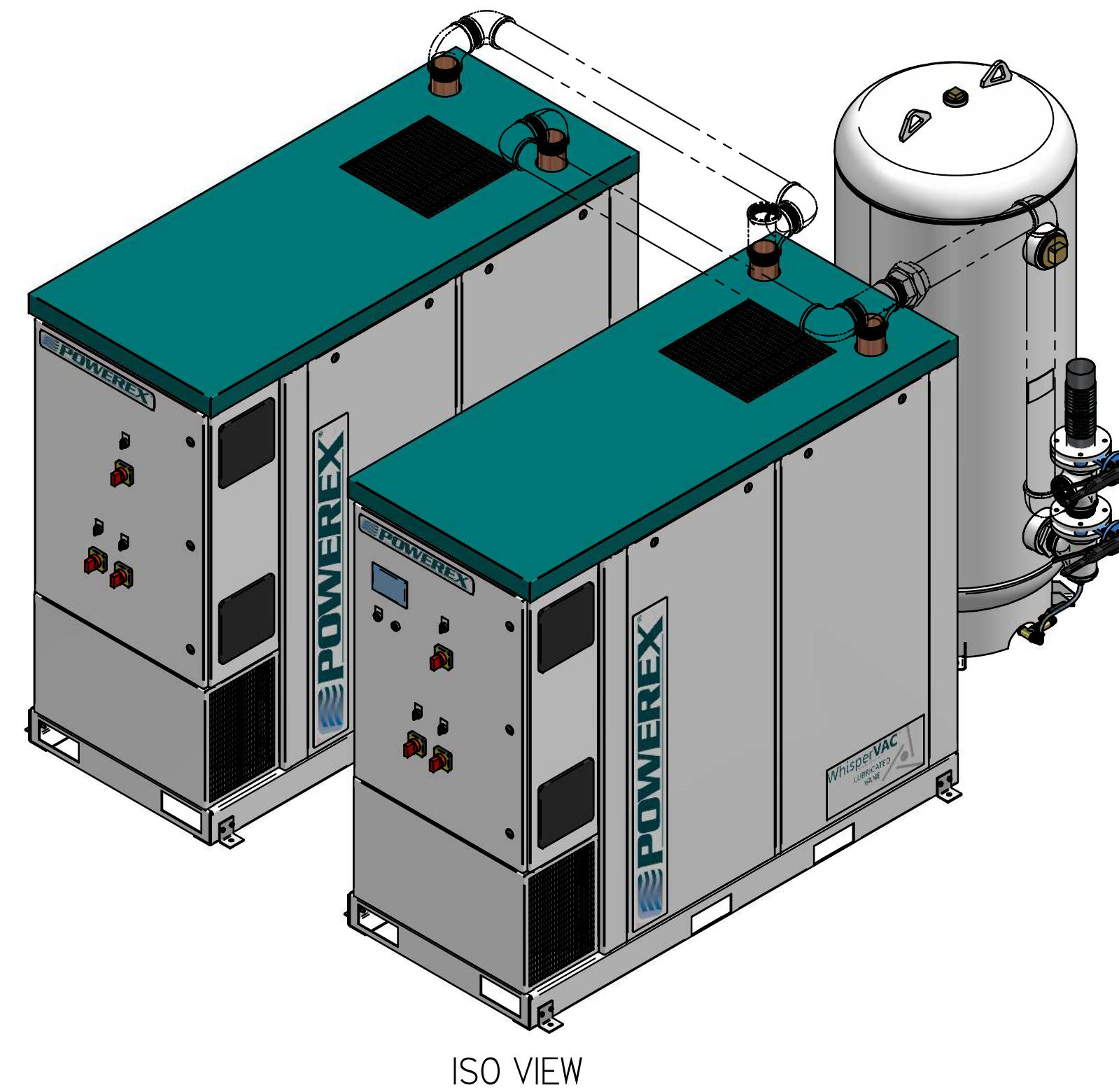


REVISION NOTES

DESCRIPTION	ECN	PR/NOR
PRODUCTION RELEASE	PXEC0099	N/A

MVEQ0505

MEDICAL BIG 5 HP
QUADPLEX VANE VACUUM
ENCLOSURE 200G TANK



- NOTES
- APPROX SYSTEM WEIGHT: 3182 LB
 - 24" MINIMUM MAINTENANCE CLEARANCE RECOMMENDED ALL SIDES. CLEARANCE FOR CONTROL PANEL SHALL BE IN ACCORDANCE WITH OSHA/NEC REQUIREMENTS

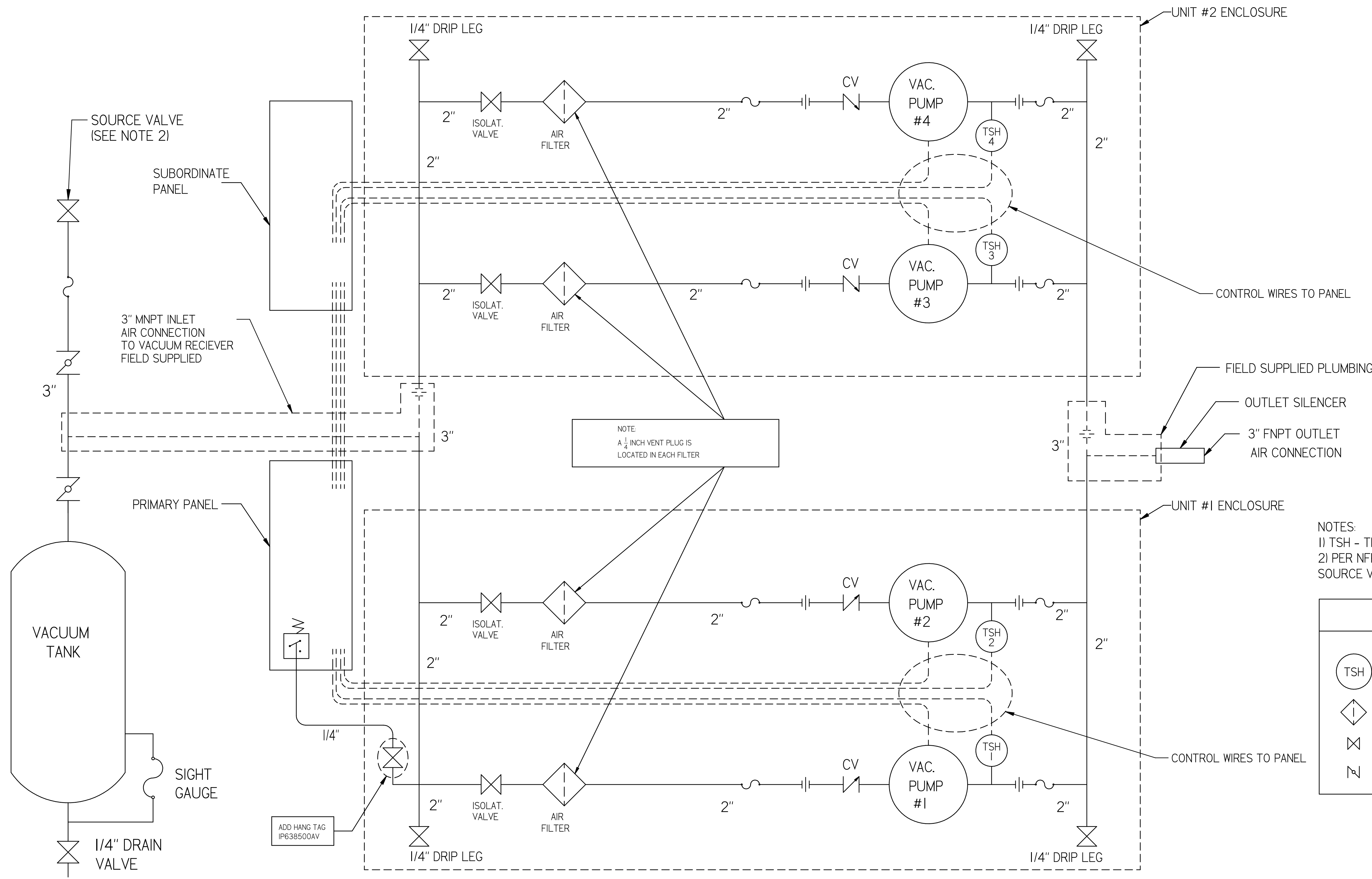
SYMBOL LEGEND		DRAWINGS TO CONFORM TO CURRENT REVISION OF THE FOLLOWING ANSI STANDARDS:	
TOLERANCES NOT SPECIFIED:	SOLID EDGE DRAWING	DO NOT SCALE DRAWING FOR DIMENSIONS	
0.XXX ± .05	INCH	SHEET 1 OF 2	SCALE 1:1/2.5
0.XXX ± .005		APPROVALS ON FILE IN PLM	
<small>CONFIDENTIAL DISCLOSURE</small> This drawing is the property of POWEREX of the SCOTT FETTER COMPANY and is subject to return on demand. Its contents are confidential and must not be copied or submitted to outside parties for use or examination.		AUTHOR	ORIGINATION DATE
TITLE: 717442 MATERIAL: SEE COMPONENT DRAWINGS		ASoulek	2/5/2019
DESCRIPTION: MEDICAL BIG 5 HP QUADPLEX VANE VACUUM ENCLOSURE 200G TANK			
DRAWING NUMBER: MVEQ0505		REVISION: B	SIZE: D

POWEREX

MVEQ0505

MEDICAL BIG 5 HP
QUADPLEX VANE VACUUM
ENCLOSURE 200G TANK

REVISION NOTES		
DESCRIPTION	ECN	PR/NOR
PRODUCTION RELEASE	PXEC0099	N/A



NOTE:
A 1/2 INCH VENT PLUG IS
LOCATED IN EACH FILTER

- NOTES:
1) TSH - TEMPERATURE SWITCH HIGH
2) PER NFPA THE SYSTEM WILL REQUIRE A
SOURCE VALVE (SUPPLIED BY OTHERS).

LEGEND	
(TSH)	TEMP. SWITCH
(diamond with vertical line)	AIR FILTER
(X)	BALL VALVE
(N)	BUTTERFLY BALL VALVE
(zigzag line)	VACUUM TRANSDUCER
(diagonal line)	CHECK VALVE
(wavy line)	FLEX LINE
(two parallel lines)	UNION

SYMBOL LEGEND		DRAWINGS TO CONFORM TO CURRENT REVISION OF THE FOLLOWING ANSI STANDARDS:	
TOLERANCES NOT SPECIFIED:		Y14.3 MULTI- AND SECTIONAL VIEW DIMS	
0.001 ± .005	DRAWING	Y14.5 DIMENSIONING AND TOLERANCING	
0.002 ± .005		SHEET 2 OF 2	SCALE 1:1
CONFIDENTIAL DISCLOSURE This drawing is the property of POWEREX or the SCOTT FETTER COMPANY and is subject to return on demand. Its contents are confidential and must not be copied or submitted to outside parties for use or examination.		AUTHOR	APPROVALS ON FILE IN PLM
717442		ASoulek	2/5/2019
MATERIAL: SEE COMPONENT DRAWINGS			
DESCRIPTION: MEDICAL BIG 5 HP QUADPLEX VANE VACUUM ENCLOSURE 200G TANK		DRAWING NUMBER MVEQ0505	REVISION B
		SIZE B	D