

Submittal Data Sheet

Features

The Frontall™ DISS medical gas recessed outlets represent the most technically advanced means of providing medical gas connections to the central piping system. The outlets incorporate a unique patented front-loaded feature which makes the Powerex outlets easy to repair, saving valuable time and money for the health care facility.

- UL Listed to UL 1331 and CSA Z9170-1.
- Conforms to NFPA 99 and CGA standards.
- Accepts DISS gas specific nut & nipple adapters.
- Ease of maintenance without removing the faceplate using a cartridge insertion tool.
- Compensates for variation in wall thickness from ½" to 1 ¼".
- Modular design.
- All outlets are 100% tested for flow and leaks.
- Nameplate color coding per NFPA 99.
- 5" centers.
- 360° swivel inlet tube.
- Strength of connections provides support for dispensing equipment without the use of additional brackets.
- Made in the USA.

Specification

The medical gas wall outlets shall be Powerex Frontall™ DISS medical gas outlets. . The outlets shall be modular singles, and shall incorporate nameplate color-coding in accordance with NFPA 99. The single modular outlets shall be of a design that provides for ganging of rough-in plates in the field to form multiples. The gas services shall be sequentially arranged and located as shown on the plans with a minimum centerline spacing of 5 inches (12.5cm) between outlets.

The medical gas outlets shall be designed so that, once installed, routine service of both the primary and secondary check valves can be accomplished without removing the nameplate or gas specific portions. The primary check valve shall be unitized and of the cartridge type. So that the primary check valve can be removed for service without shutting off the gas supply to the outlet, the secondary check valve shall operate automatically to stop the free flow of the positive pressure gas services. There shall be no secondary check for vacuum or WAGD services. Medical gas outlets which require the removal of the nameplate or gas specific components for routine service shall not be acceptable. The seal between the



Part Number PX-ASN91XF112080 shown

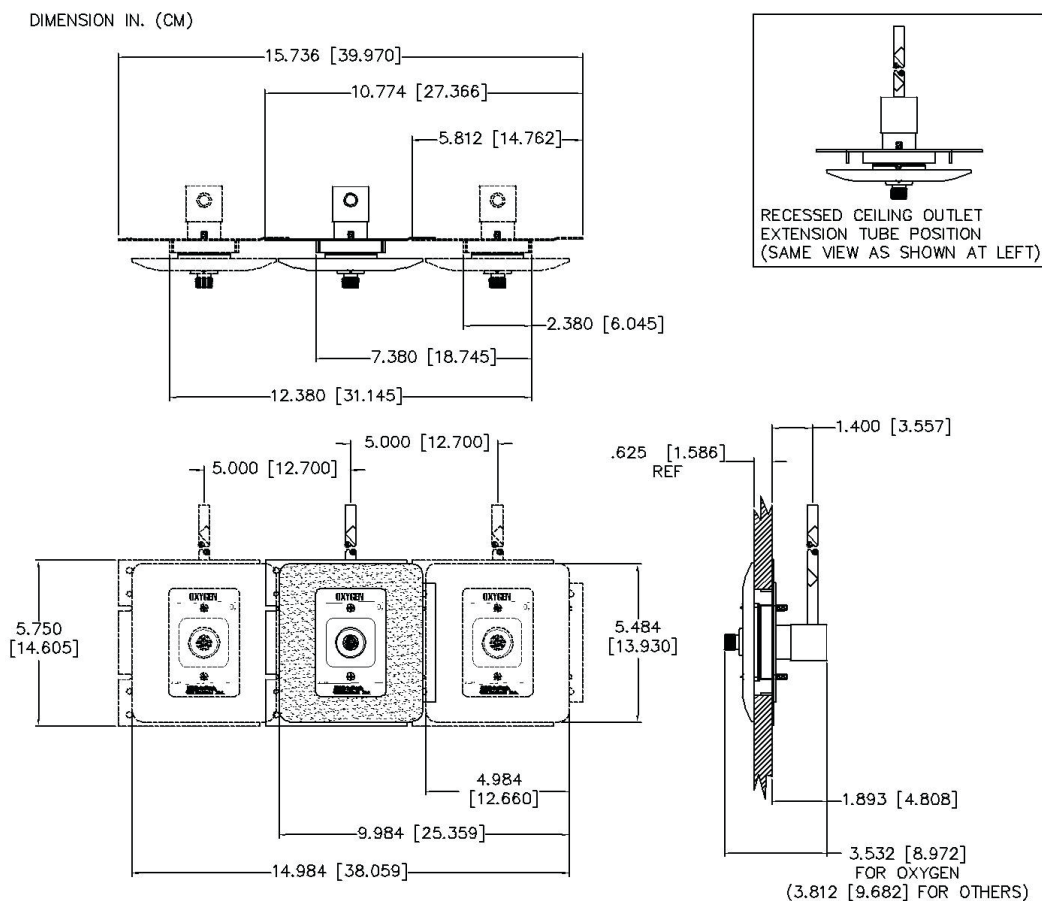
nameplate and the rough-in shall be a double O-ring which is serviceable without shutting off the gas service and is capable of supporting 10 pounds at 2" from the nameplate without leaking.

The outlet nameplate shall be permanently color-coded. The outlet trim plate shall be die cast aluminum, powder coated chrome, attached with the nameplate to the rough-in assembly, and provide automatic plaster adjustment from ½ to 1 ¼ of an inch (1.3 cm to 3 cm). The name of the gas service shall be permanently marked on the outlet bracket and the chrome plated brass outlet body. The outlet's rough-in supply tube shall be a 7 inch (18 cm) length of ½ OD copper Type K, and labeled with the name of the gas service.

Medical gas outlets shall be cleaned for oxygen service in accordance with the current Compressed Gas Association (CGA) Pamphlet G-4.1, capped and placed in a protective container for shipment. The outlets shall be installed in strict accordance with manufacturer's instructions, and tested before use in conformance with local and federal codes.

MRI compatible models are available (see ordering information chart) and are made with non-ferrous metals.

Layout



Ordering Information

ASN Series Recessed Outlets Complete – with the chrome die cast aluminum trim plate.

Gas Service	Recessed Complete		MRI Compatible	
	Wall	Ceiling	Wall	Ceiling
Nitrous Oxide	PX-ASN91XF1104	PX-ASN91XF1204	*PX-ASN91XF1104-MRI	*PX-ASN91XF1204-MRI
Carbon Dioxide	PX-ASN91XF1108	PX-ASN91XF1208	*PX-ASN91XF1108-MRI	*PX-ASN91XF1208-MRI
Nitrogen	PX-ASN91XF1112	PX-ASN91XF1212	*PX-ASN91XF1112-MRI	*PX-ASN91XF1212-MRI
Medical Air	PX-ASN91XF1116	PX-ASN91XF1216	PX-ASN91XF1116-MRI	PX-ASN91XF1216-MRI
Medical Vacuum	PX-ASN91XF1122	PX-ASN91XF1222	PX-ASN91XF1122-MRI	PX-ASN91XF1222-MRI
Oxygen	PX-ASN91XF1124A	PX-ASN91XF1224A	PX-ASN91XF1124A-MRI	PX-ASN91XF1224A-MRI
WAGD	PX-ASN91XF1132	PX-ASN91XF1232	*PX-ASN91XF1132-MRI	*PX-ASN91XF1232-MRI
Instrument Air	PX-ASN91XF112080	PX-ASN91XF122080	*PX-ASN91XF112080-MRI	*PX-ASN91XF122080-MRI
Slide	PX-XF1145-CH	N/A	*PX-XF1145-CH-MRI	N/A

*Indicates that these are **NOT** UL Listed outlets. Slides are not subject to UL Listing.

To place an order or request additional information call toll-free 1-888-769-7979, fax us at 1-513-367-3125, or email us at order@powerexinc.com. Please visit our website at www.powerexinc.com.