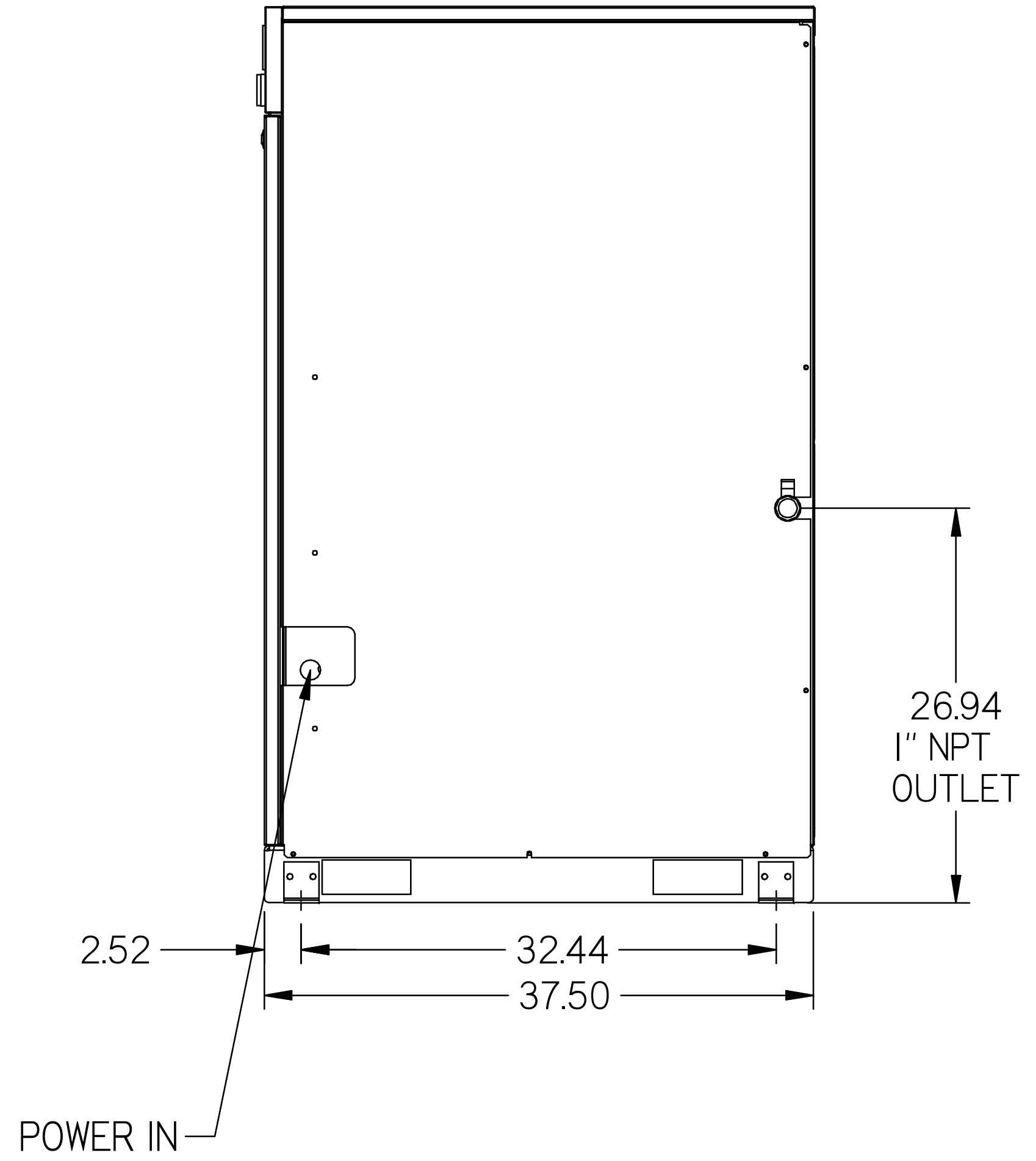
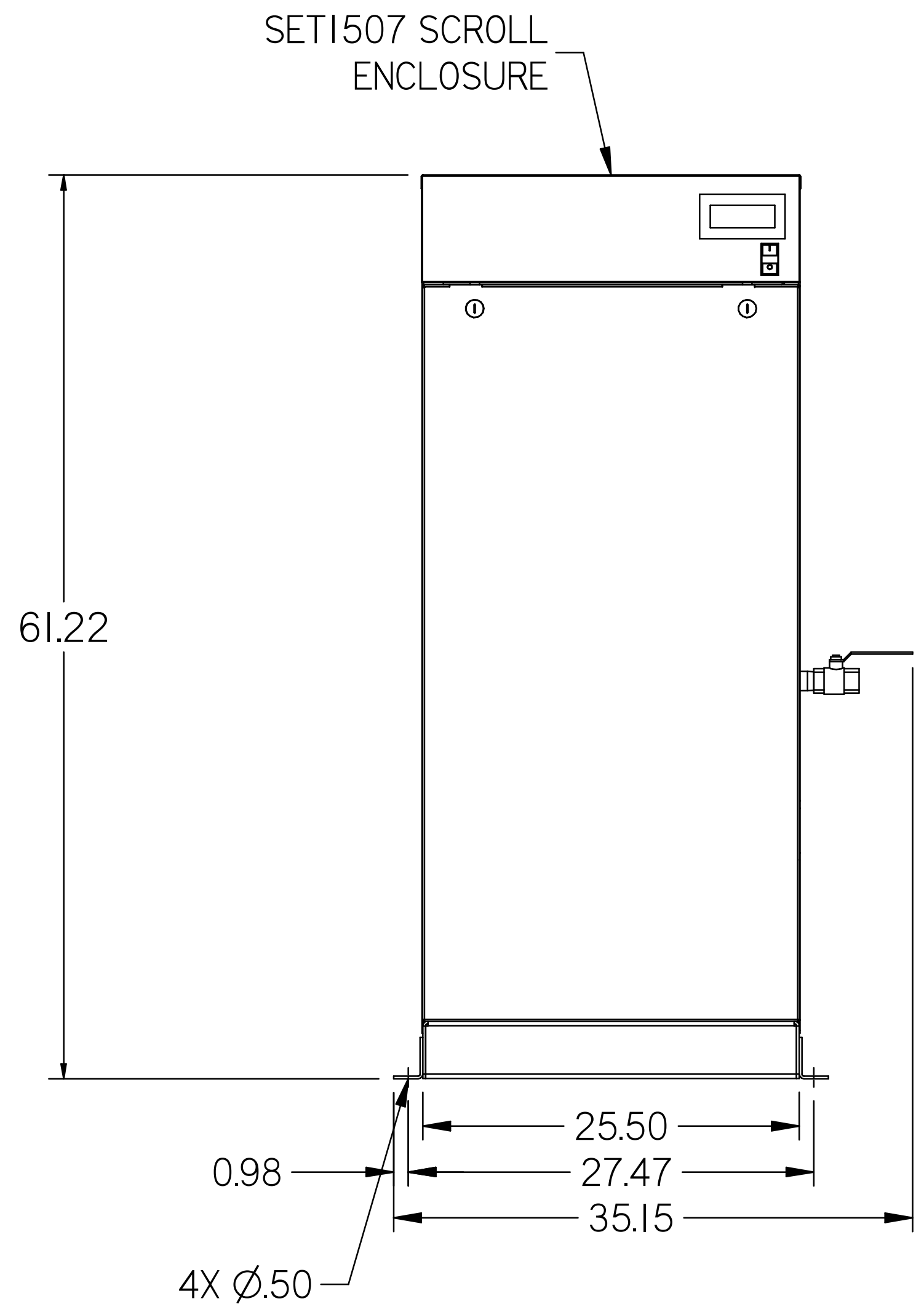
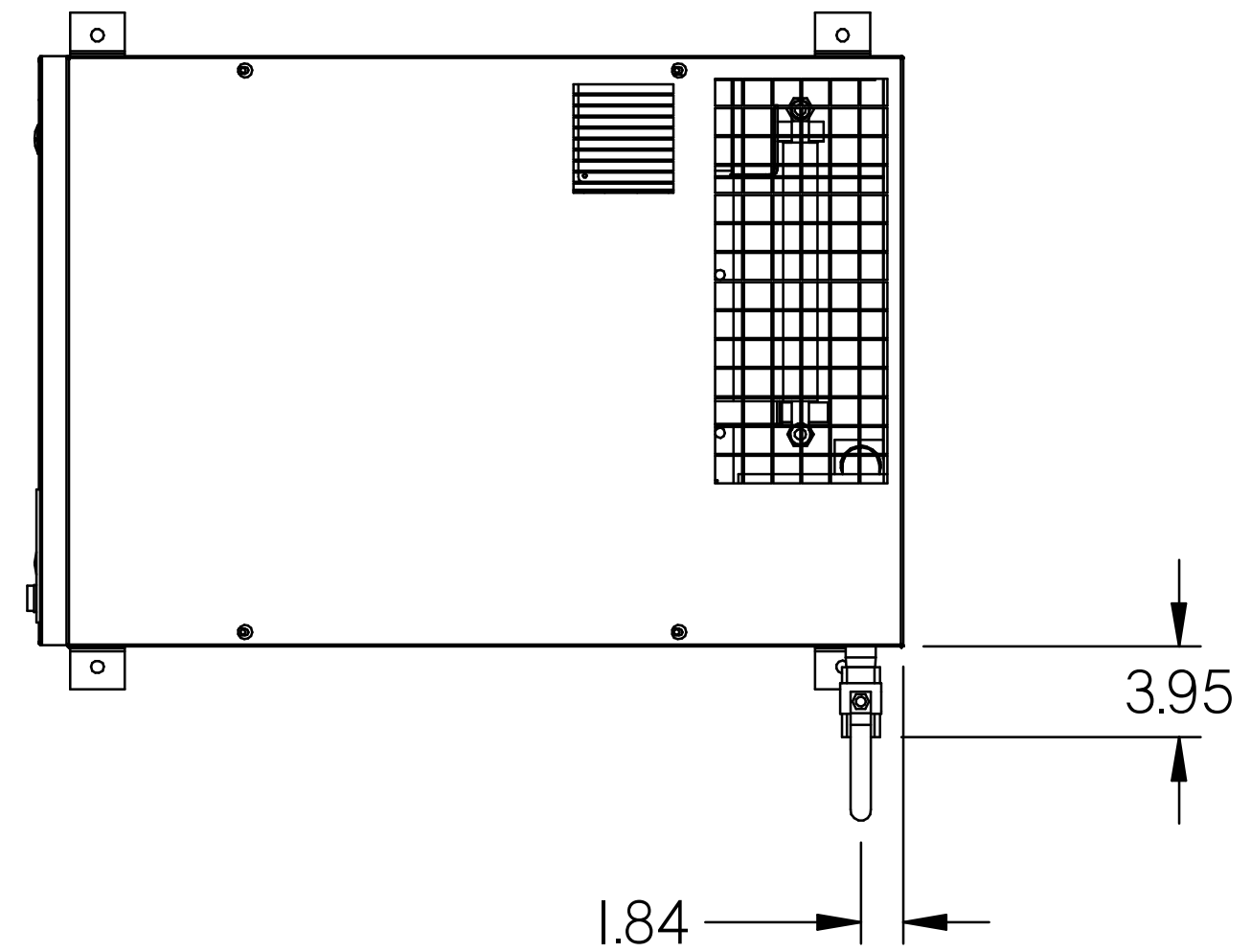


8 7 6 5 4 3 2 1

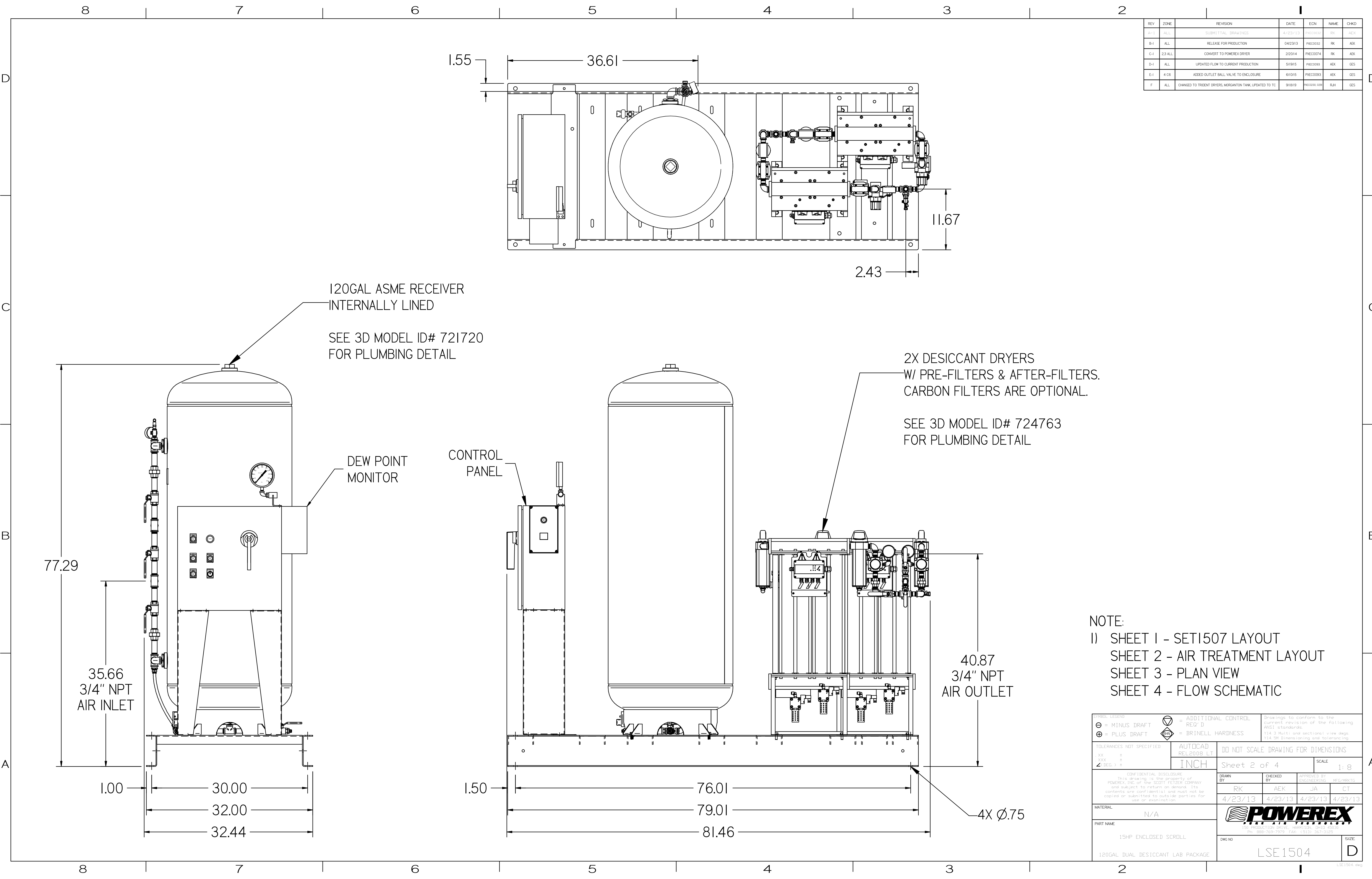
REV	ZONE	REVISION	DATE	ECN	NAME	CHKD
B-1	ALL	SUBMITTAL DRAWINGS	4/23/13	PREC0030	RK	AEK
B-4	ALL	RELEASE FOR PRODUCTION	04/23/13	PREC0032	RK	AEK
C-4	23 ALL	CONVERT TO POWEREX DRIVER	2/20/14	PREC0074	RK	AEK
D-1	ALL	UPDATED FLOW TO CURRENT PRODUCTION	5/19/15	PREC0093	AEK	GES
E-4	4 CS	ADDED OUTLET BALL VALVE TO ENCLOSURE	6/10/15	PREC0093	AEK	GES
F	ALL	CHANGED TO TRIDENT DRIVERS, MORGANTON TANK, UPDATED TO TC	9/18/19	PREC0301	RJM	GES



NOTE:  
 1) SHEET 1 - SET1507 LAYOUT  
 SHEET 2 - AIR TREATMENT LAYOUT  
 SHEET 3 - PLAN VIEW  
 SHEET 4 - FLOW SCHEMATIC

<b>SYMBOL LEGEND</b> ⊖ = MINUS DRAFT ⊕ = PLUS DRAFT Ⓢ = ADDITIONAL CONTROL REQ'D Ⓡ = BRINELL HARDNESS		Drawings to conform to the current revision of the following ANSI standards: Y14.3 Multi and sectional view dgs Y14.5M Dimensioning and tolerancing	
TOLERANCES NOT SPECIFIED .XX ± .XXX ± .2 (DEC.) ±		AUTOCAD REL2008 LT INCH	DO NOT SCALE DRAWING FOR DIMENSIONS Sheet 1 of 4 SCALE 1:8
<small>CONFIDENTIAL DISCLOSURE</small> This drawing is the property of POWEREX, INC. or the SCOTT FETZER COMPANY and subject to return on demand. Its contents are confidential and must not be copied or submitted to outside parties for use or examination.		DRAWN BY RK	CHECKED BY AEK
MATERIAL N/A		APPROVED BY JA	DATE 4/23/13
PART NAME 15HP ENCLOSED SCROLL			
120GAL DUAL DESICCANT LAB PACKAGE		DWG NO LSE1504	SIZE D

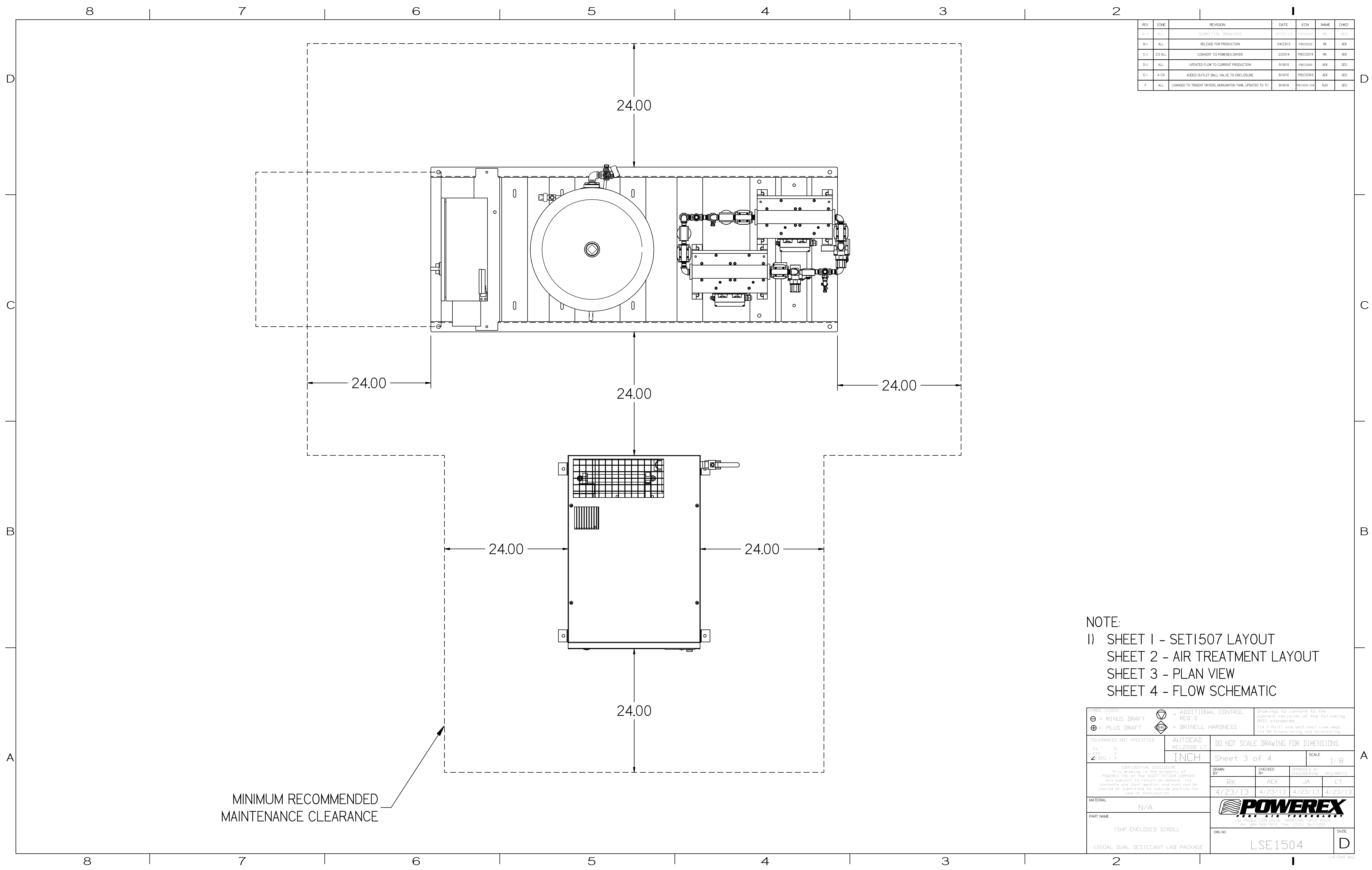
8 7 6 5 4 3 2 1



REV	ZONE	REVISION	DATE	ECN	NAME	CHKD
A-1	ALL	SUBMITTAL DRAWINGS	4/23/13	PREC0095	RK	AEK
B-1	ALL	RELEASE FOR PRODUCTION	04/23/13	PREC0092	RK	AEK
C-1	2,3,4,LL	CONVERT TO POWEREX DRIVER	2/20/14	PREC0074	RK	AEK
D-1	ALL	UPDATED FLOW TO CURRENT PRODUCTION	5/19/15	PREC0093	AEK	GES
E-1	4, C6	ADDED OUTLET BALL VALVE TO ENCLOSURE	6/10/15	PREC0093	AEK	GES
F	ALL	CHANGED TO TRIDENT DRIVERS, MORGANTON TANK, UPDATED TO TC	9/18/19	PREC0093	RJA	GES

NOTE:  
 1) SHEET 1 - SET1507 LAYOUT  
 SHEET 2 - AIR TREATMENT LAYOUT  
 SHEET 3 - PLAN VIEW  
 SHEET 4 - FLOW SCHEMATIC

SYMBOL LEGEND ⊖ = MINUS DRAFT ⊕ = PLUS DRAFT Ⓢ = ADDITIONAL CONTROL REQ'D Ⓜ = BRINELL HARDNESS		Drawings to conform to the current revision of the following ANSI standards: Y14.3 Multi and sectional view dgs Y14.3B Dimensioning and tolerancing	
TOLERANCES NOT SPECIFIED XX ± XXX ± Z.BEG ±		AUTOCAD REL2008 LT INCH DO NOT SCALE DRAWING FOR DIMENSIONS Sheet 2 of 4 SCALE 1:8	
CONFIDENTIAL DISCLOSURE This drawing is the property of POWEREX, INC. of the SCOTT FETZER CDHPW and subject to return on demand. Its contents are confidential and must not be copied or submitted to outside parties for use or examination.		DRWN BY: RK CHCKD BY: AEK 4/23/13	
MATERIAL: N/A		APPROVED BY: JA, CT 4/23/13, 4/23/13, 4/23/13, 4/23/13	
PART NAME: 15HP ENCLOSED SCROLL 120GAL DUAL DESICCANT LAB PACKAGE		 150 PRODUCTION DRIVE, HARRISON, OHIO 45030 Ph: 989-769-7979, Fax: (513) 947-3105	
DWG NO: LSE1504		SIZE: D	



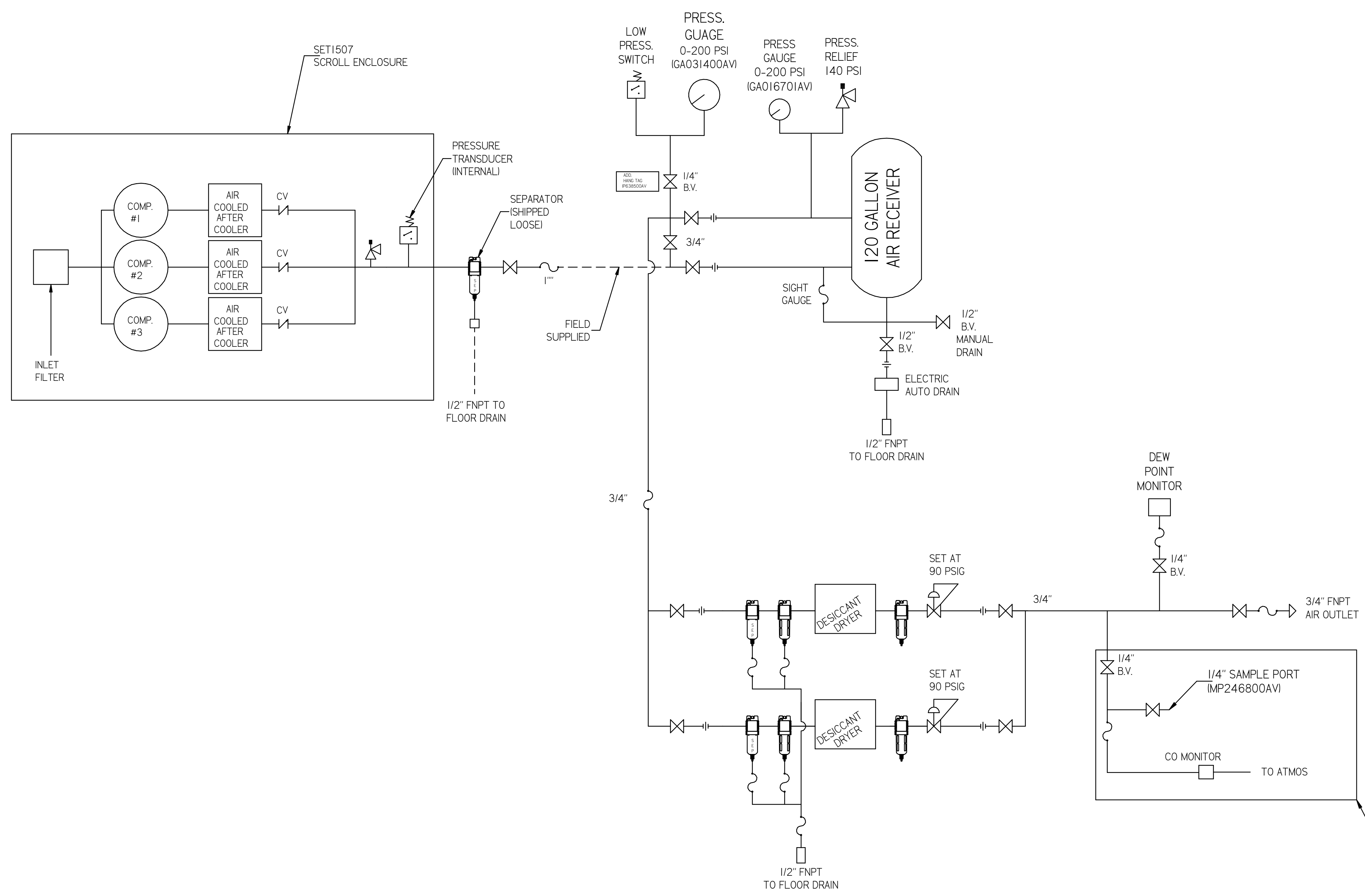
REV	ZONE	REVISION	DATE	ECN	NAME	CHKD
A-1	ALL	ISSUED TO ALL BIDDERS	4/23/13	PREC0001	RK	AEK
B-1	ALL	RELEASE FOR PRODUCTION	04/23/13	PREC0002	RK	AEK
C-1	23 ALL	CONVERT TO POWEREX DRIVER	2/20/14	PREC0074	RK	AEK
D-1	ALL	UPDATED FLOW TO CURRENT PRODUCTION	5/19/15	PREC0093	AEK	GES
E-1	4 CB	ADDED OUTLET BALL VALVE TO ENCLOSURE	6/10/15	PREC0093	AEK	GES
F	ALL	CHANGED TO TRENT DRIVERS, MORGANTON TANK, UPDATED TO TC	9/18/19	PREC0201_029	RLH	GES

MINIMUM RECOMMENDED MAINTENANCE CLEARANCE

NOTE:  
 1) SHEET 1 - SET1507 LAYOUT  
 SHEET 2 - AIR TREATMENT LAYOUT  
 SHEET 3 - PLAN VIEW  
 SHEET 4 - FLOW SCHEMATIC

SYMBOL LEGEND ⊖ = MINUS DRAFT ⊕ = PLUS DRAFT Z (REG.) =		⊕ = ADDITIONAL CONTROL REQ'D HB = BRINELL HARDNESS		Drawings to conform to the current revision of the following ANSI standards: Y14.3 Multi and sectional view dgs. Y14.5M Dimensioning and tolerancing	
TOLERANCES NOT SPECIFIED .XX ± .XXX ± Z (REG.) ±		AUTOCAD REL2009 LT <b>INCH</b>		DO NOT SCALE DRAWING FOR DIMENSIONS Sheet 3 of 4 SCALE 1:8	
CONFIDENTIAL DISCLOSURE This drawing is the property of POWEREX, INC. of the SCOTT FETZER COMPANY and subject to return on demand. Its contents are confidential and must not be copied or submitted to outside parties for use or examination.		DRAWN BY RK	CHECKED BY AEK	APPROVED BY JA	W/DATE CT 4/23/13 4/23/13 4/23/13 4/23/13
MATERIAL N/A					
PART NAME 15HP ENCLOSED SCROLL		DWG NO LSE1504		SIZE D	
120GAL DUAL DESICCANT LAB PACKAGE					

REV	ZONE	REVISION	DATE	ECN	NAME	CHKD
B-1	ALL	SUBMITTAL DRAWINGS	11/23/13		RK	REV
B-4	ALL	RELEASE FOR PRODUCTION	04/23/13		AEK	AEK
C-1	2,3	CONVERT TO POWREX DRYER	2/20/14		AEK	AEK
D-1	ALL	UPDATED FLOW TO CURRENT PRODUCTION	5/19/15		AEK	GES
E-1	4,6	ADDED OUTLET BALL VALVE TO ENCLOSURE	6/10/15		AEK	GES
F	ALL	CHANGED TO TRICENT DRYERS, MORGANTON TANK, UPDATED TO TC	9/18/19		RLH	GES



LEGEND	
	RELIEF VALVE
	INTAKE FILTER
	AIR FILTER
	CARBON FILTER
	BALL VALVE
	3 WAY VALVE
	REGULATOR
	SEPARATOR
	FLEX LINE
	HIGH TEMP SWITCH
	UNION
	CHECK VALVE

NOTE:  
 1) SHEET 1 - SET1507 LAYOUT  
 SHEET 2 - AIR TREATMENT LAYOUT  
 SHEET 3 - PLAN VIEW  
 SHEET 4 - FLOW SCHEMATIC

SYMBOL LEGEND		= ADDITIONAL CONTROL = REQ'D = BRINELL HARDNESS		Drawings to conform to the current revision of the following ANSI standards: Y14.3 Multi and sectional view dgs Y14.9M Dimensioning and tolerancing	
TOLERANCES NOT SPECIFIED .XX ± .XX ± .XX ±		AUTOCAD REL2008 LT <b>INCH</b>		DO NOT SCALE DRAWING FOR DIMENSIONS Sheet 4 of 4 SCALE 1:8	
CONFIDENTIAL DISCLOSURE This drawing is the property of POWREX, INC. of the SCOTT FETZER COMPANY and subject to return or demand. Its contents are confidential and must not be copied or submitted to outside parties for use or examination.		DRAWN BY RK	CHECKED BY AEK	APPROVED BY JA	DATE CT
MATERIAL N/A		DATE 4/23/13	DATE 4/23/13	DATE 4/23/13	DATE 4/23/13
PART NAME ENCLOSED SCROLL FLOW SCHEMATIC				150 PRODUCTION DRIVE, HARRISON, OHIO 45030 PH: 888-726-7079 FAX: 513-367-3125	
DWG NO LSE1504		SIZE D			