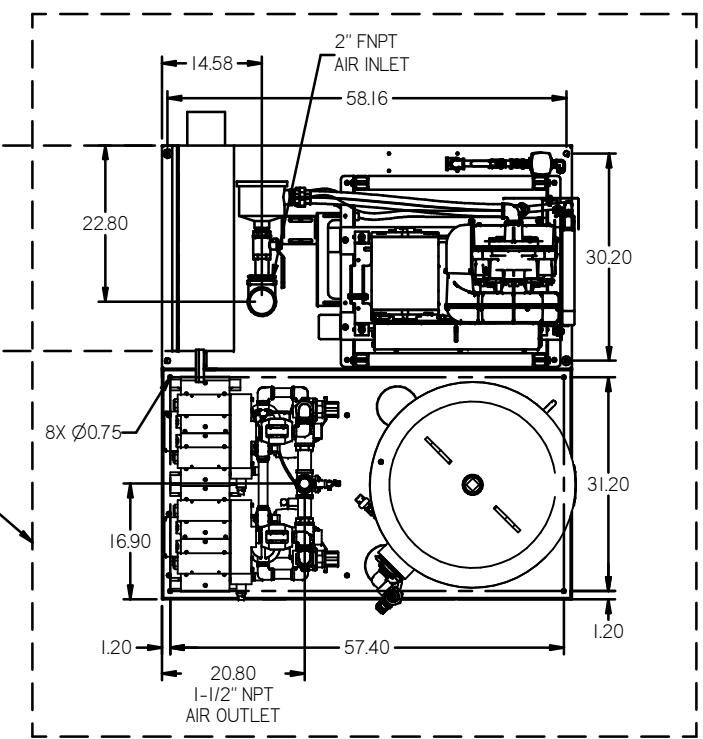


| REV | ZONE | REVISION | DATE | ECN | NAME | CHRD |
|-----|----------------|---|----------|----------|------|------|
| B-1 | ALL | RELEASE TO PRODUCT IEN | 6/23/15 | PRE0105 | JBE | AEK |
| C4 | ALL | UPDATED BASEMOUNT TO CURRENT PRODUCTION STANDARDS | 7/28/16 | PRE0139 | AEK | GES |
| D4 | 2 ALL 1 ALL | ADDED NOTE TO REMOVE SEPARATOR FLOATS ADDED OUTLINE FOR RECOMMENDED CLEARANCES UPDATED INLET TREE | 01/01/17 | PRE0167 | MJD | GES |
| E | ALL | CHANGED TO HEAVY DUTY BASEMOUNT, UPDATED TO 200000 | 01/01/19 | PRE02029 | GES | MW |



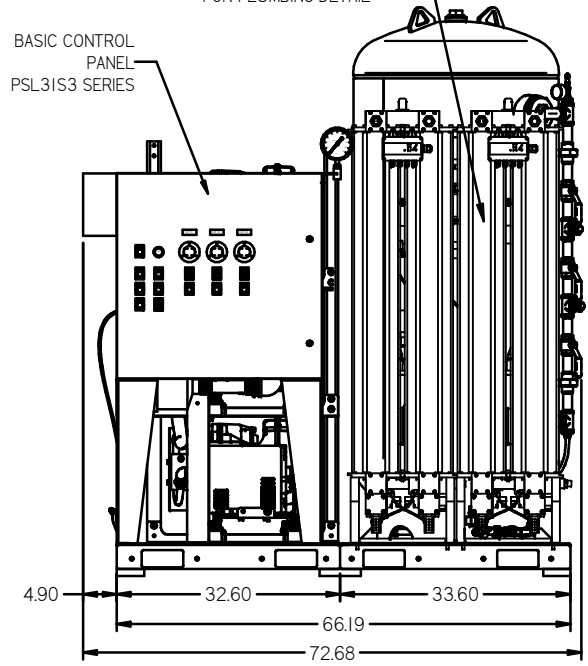
MINIMUM RECOMMENDED ELECTRICAL PANEL CLEARANCE PER OSHA/NEC REQUIREMENTS

24" MINIMUM RECOMMENDED MAINTENANCE CLEARANCE

2X DESICCANT DRYERS W/ PRE-FILTERS & AFTER-FILTERS. CARBON FILTERS ARE OPTIONAL.

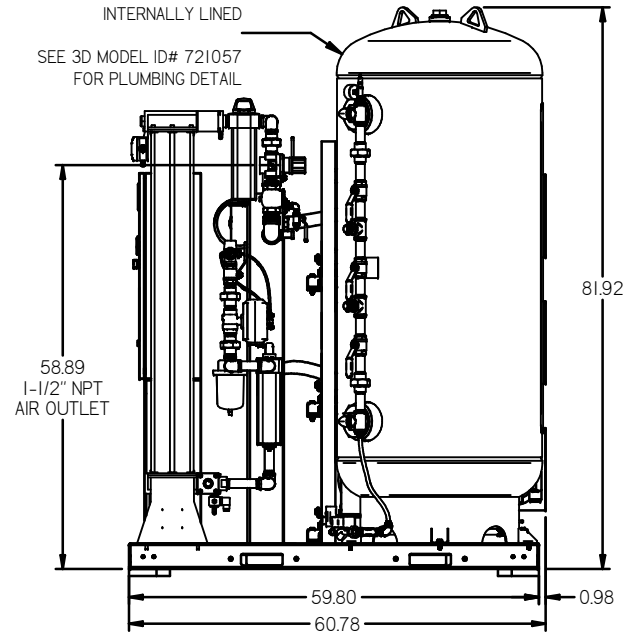
SEE 3D MODEL ID# 725248 FOR PLUMBING DETAIL

BASIC CONTROL PANEL PSL31S3 SERIES

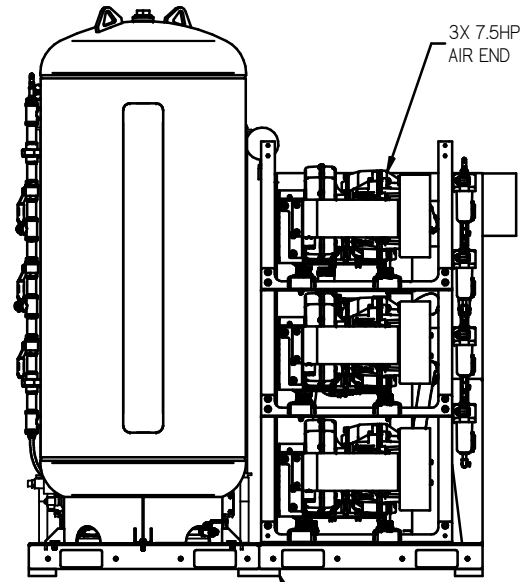


200 GAL ASME RECEIVER INTERNALLY LINED

SEE 3D MODEL ID# 721057 FOR PLUMBING DETAIL



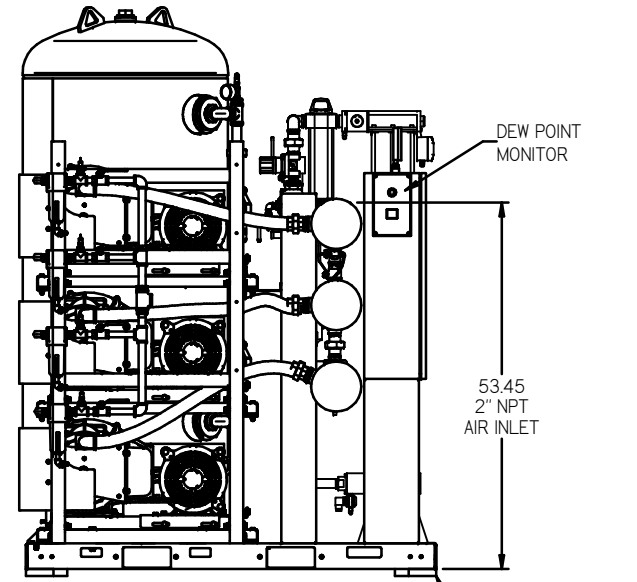
3X 7.5HP OILLESS SCROLL AIR END



ISOLATION PADS 6" X 6" X 1" (QTY.2)

DEW POINT MONITOR

53.45 2" NPT AIR INLET



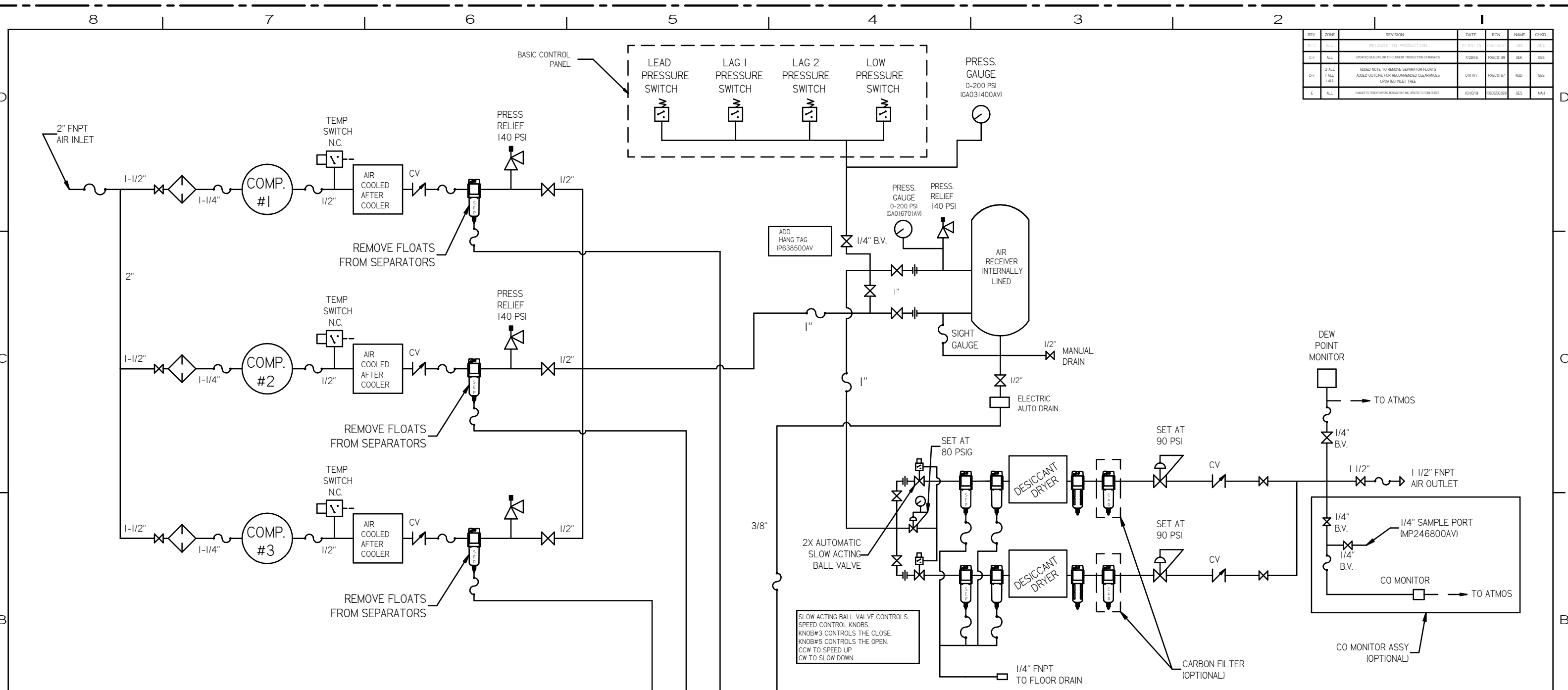
ISOLATION PADS 4" X 4" X 1" (QTY.4)

NOTE: SYSTEM DESIGNED IN COMPLIANCE WITH US NFPA'99, LATEST EDITION.

| | | | |
|--|--|---|---|
| MINUS DRAFT PLUS DRAFT ADDITIONAL CONTROL REQ'D BRINELL HARDNESS | TOLERANCES NOT SPECIFIED XX ± XXX ± 4 DEC ± | AUTOCAD REL2000 I INCH | DO NOT SCALE DRAWING FOR DIMENSIONS Sheet 1 of 2 SCALE 1:14 |
| CONFIDENTIAL DISCLOSURE This drawing is the property of POWEREX, INC. of the SCOTT FELDER COMPANY and subject to return on demand. Its contents are confidential and must not be copied or submitted to outside parties for use or examination. | | DRAWN BY: JBE CHECKED BY: AEK APPROVED BY: JA, NA 2/23/15, 2/23/15, 2/23/15, 2/23/15 | MATERIAL: N/A PART NAME: TRIPLEX LAB SCROLL 10HP, 200GAL. BASEMOUNT DUPLEX DESICCANT DWG NO: LST10B5 SIZE: D |



| REV | DATE | REVISION | DATE | EDN | NAME | QWD |
|-----|-------------------------|---|----------|-----------|------|-----|
| 0-1 | FALL | RELEASE TO PRODUCTION | 2/23/15 | PREC053 | JBE | AEK |
| 0-1 | ALL | UPDATED INFLUXION TO CURRENT PRODUCTION STANDARDS | 7/28/16 | PREC0539 | AEK | GES |
| 0-1 | 2 ALL 3 ALL 4 ALL | ADDED NOTE TO REMOVE SEPARATOR FLOATS ADDED OUTLINE FOR RECOMMENDED CLEARANCES UPDATED INLET TREE | 01/11/17 | PREC0167 | MJD | GES |
| E | ALL | CHANGED TO PRESSURE SWITCHES FROM PRESSURE GAUGES | 01/01/19 | PREC02023 | GES | MW |



| LEGEND | |
|--------|------------------|
| | RELIEF VALVE |
| | INTAKE FILTER |
| | AIR FILTER |
| | 3 WAY VALVE |
| | CARBON FILTER |
| | BALL VALVE |
| | PRESSURE SWITCH |
| | REGULATOR |
| | SEPARATOR |
| | CHECK VALVE |
| | FLEX LINE |
| | HIGH TEMP SWITCH |
| | UNION |

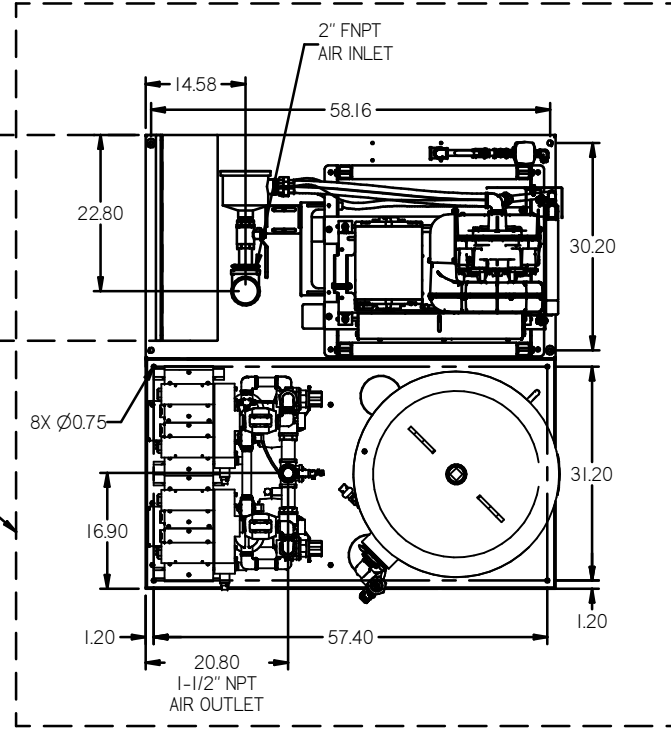
NOTES:
 1) PIPING TO THE INLET BY OTHERS AND TO BE PER NFPA99 4-3.1.1.9(b)
 2) INSTRUMENTS DOWN STREAM OF SOURCE VALVE TO BE SUPPLIED BY OTHERS.
 3) IF LOW PRESSURE IS DETECTED ALARM WILL OCCUR.

| | | |
|--|--|--|
| MINUS DRAFT PLUS DRAFT TOLERANCES NOT SPECIFIED XX ± XX ± 2 DEC. 3 | AUTOCAD REL2000i INCH Sheet 2 of 2 SCALE 1:14 | Drawings to conform to the current revision of the following ANSI standards: (14.3 Multi) and sectional view depts. (14.99 Dimensioning and tolerancing) |
| CONFIDENTIAL DISCLOSURE This drawing is the property of POWEREX, INC. of the SCOTT FETZER COMPANY and subject to return on demand. Its contents are confidential and must not be copied or submitted to outside parties for use on any machine. | DRAWN BY: JBE CHECKED BY: AEK 2/23/15 MATERIAL: N/A | DESIGNED BY: JA APPROVED BY: CT 2/23/15 PART NAME: 10HP LAB SCROLL TRIPLEX FLOW SCHEMATIC DWG NO: LST10B5 SIZE: D |

| REV | ZONE | REVISION | DATE | ECN | NAME | CHKD |
|-----|-------------------------|---|----------|-----|------|------|
| B | ALL | RELEASE TO PRODUCTION | 11/23/15 | | JBE | AEK |
| C-1 | ALL | UPDATED BUILD/LOW TO CURRENT PRODUCTION STANDARDS | 7/28/16 | | AEK | GES |
| D-1 | 2 ALL 1 ALL 1 ALL | ADDED NOTE TO REMOVE SEPARATOR FLOATS ADDED OUTLINE FOR RECOMMENDED CLEARANCES UPDATED INLET TREE | 01/11/17 | | MJD | GES |
| E | ALL | CHANGED TO TREAT DRYERS MOUNTING TAB, UPDATED TO TUM COVER | 10/01/19 | | GES | MW |

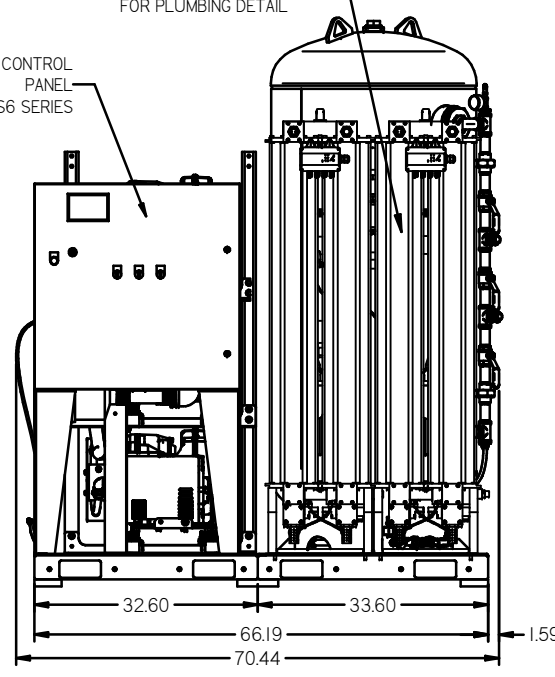
MINIMUM RECOMMENDED ELECTRICAL PANEL CLEARANCE PER OSHA/NEC REQUIREMENTS

24" MINIMUM RECOMMENDED MAINTENANCE CLEARANCE

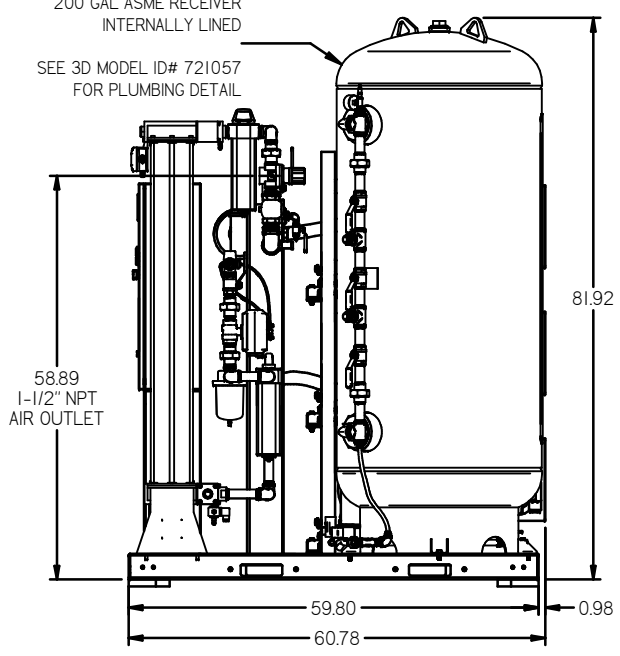


2X DESICCANT DRYERS
W/ PRE-FILTERS & AFTER-FILTERS.
CARBON FILTERS ARE OPTIONAL.
SEE 3D MODEL ID# 725248
FOR PLUMBING DETAIL

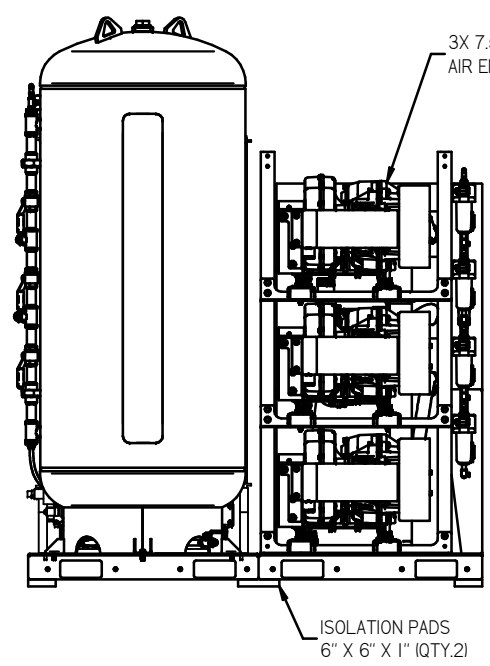
PREMIUM CONTROL
PANEL
PBMLA31S6 SERIES



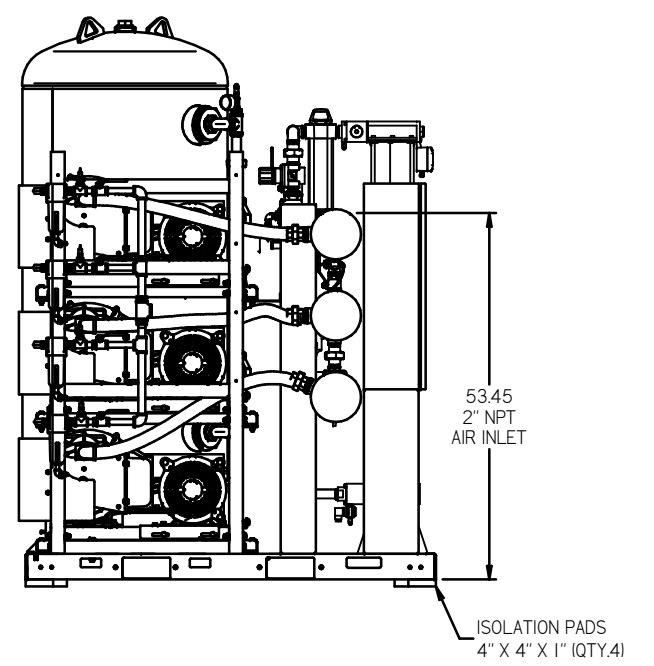
200 GAL ASME RECEIVER
INTERNALLY LINED
SEE 3D MODEL ID# 721057
FOR PLUMBING DETAIL



3X 7.5HP OILLESS SCROLL
AIR END

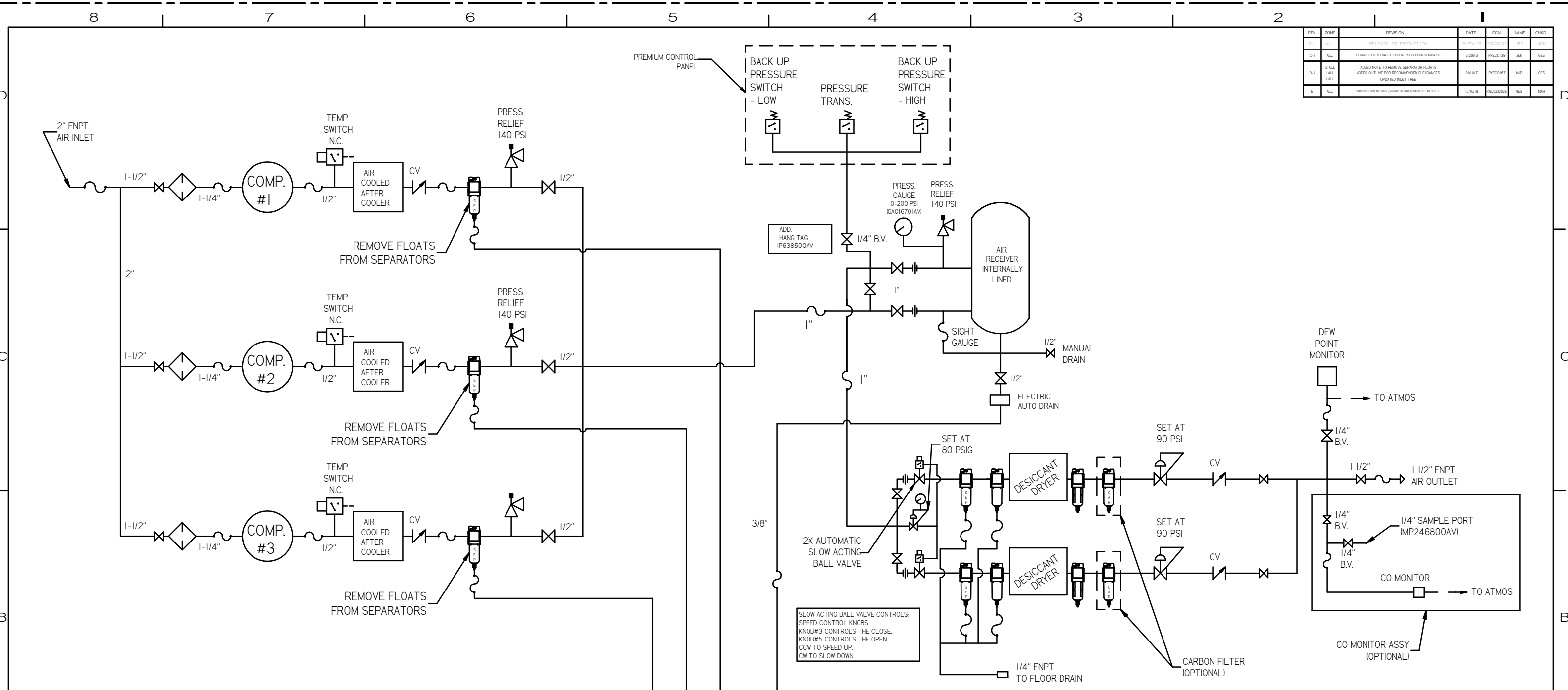


53.45
2" NPT
AIR INLET



| | | |
|--|--|---|
| THIS CODE ⊖ = MINUS DRAFT ⊕ = PLUS DRAFT TOLERANCES NOT SPECIFIED .XX ± .XXX ± .DEG ± | = ADDITIONAL CONTROL REQ'D = BRINELL HARDNESS | Drawings to conform to the current revision of the following ANSI standards: Y14.3 Multi- and sectional view dgs. Y14.9M Dimensioning and tolerancing |
| AUTOCAD REL 2000.1 INCH | DO NOT SCALE DRAWING FOR DIMENSIONS | |
| CONFIDENTIAL PROPRIETARY This drawing is the property of POWEREX, INC. of the SCOTT FETZER COMPANY and subject to return on demand. Its contents are confidential and must not be copied or used in any way to make any part for use or reproduction. | Sheet 1 of 2 SCALE 1:14 | DRWN BY: JBE CKD BY: AEK 2/23/15 |
| MATERIAL: N/A | POWEREX 134 PROSSER DRIVE, HANCOCK, MA 01930 PH: 888-759-7979 FAX: 513-367-3125 | |
| PART NAME: TRIPLEX LAB SCROLL 10HP, 200GAL, BASEMOUNT DUPLEX DESICCANT | DWG NO: LST10B5 | SIZE: D |

| REV | ZONE | REVISION | DATE | ECN | NAME | CHKD |
|-----|----------------|---|----------|-----|-----------|------|
| 0-1 | ALL | RELEASE TO PRODUCTION | 2/23/15 | | JBE | JBE |
| C-1 | ALL | UPDATED BLDG PLAN TO CURRENT PRODUCTION STANDARDS | 7/28/16 | | PRECO39 | AEK |
| D-1 | 2 ALL 1 ALL | ADDED NOTE TO REMOVE SEPARATOR FLOATS ADDED OUTLINE FOR RECOMMENDED CLEARANCES UPDATED INLET TREE | 01/01/17 | | PRECO67 | MJD |
| E | ALL | CHANGED TO TERRY BRINK ASSURANCE TAG UPDATES TO NEW CODES | 10/01/19 | | PRECO2029 | GES |



LEGEND

| | | | |
|--|---------------|--|------------------|
| | RELIEF VALVE | | PRESSURE SWITCH |
| | INTAKE FILTER | | REGULATOR |
| | AIR FILTER | | SEPARATOR |
| | 3 WAY VALVE | | CHECK VALVE |
| | CARBON FILTER | | FLEX LINE |
| | BALL VALVE | | HIGH TEMP SWITCH |
| | | | UNION |

NOTES:

- 1) PIPING TO THE INLET BY OTHERS AND TO BE PER NFPA99 4-3.1.1.9(b)
- 2) INSTRUMENTS DOWN STREAM OF SOURCE VALVE TO BE SUPPLIED BY OTHERS.
- 3) IF LOW PRESSURE IS DETECTED ALARM WILL OCCUR.

LEGEND:

- MINUS DRAFT
- PLUS DRAFT
- ADDITIONAL CONTROL REQ'D
- BRINELL HARDNESS

CONTROL PANEL: BACK UP PRESSURE SWITCH - LOW, PRESSURE TRANS., BACK UP PRESSURE SWITCH - HIGH

DEW POINT MONITOR: TO ATMOS

CO MONITOR ASSY (OPTIONAL): TO ATMOS

LEGEND:

- SLOW ACTING BALL VALVE CONTROLS SPEED CONTROL KNOBS. KNOB#3 CONTROLS THE CLOSE. KNOB#5 CONTROLS THE OPEN. CW TO SPEED UP. CCW TO SLOW DOWN.

| | | | |
|--|--|-------------------------------------|--|
| TOLERANCES NOT SPECIFIED: XX ± XXX ± 2 (DEG) ± | AUTOCAD REL20001 | DO NOT SCALE DRAWING FOR DIMENSIONS | Drawings to conform to the current revision of the following ANSI standards: 114.3 Multi and sectional view dsgs. 114.9 Dimensioning and tolerancing |
| Sheet 2 of 2 | | SCALE | 1:14 |
| <small>CONFIDENTIAL DISCLOSURE</small> This drawing is the property of POWEREX, INC. of the SCOTT FITZGER COMPANY and subject to return on demand. Its contents are confidential and must not be copied or submitted to outside parties for use or examination. | | | |
| MATERIAL | N/A | DATE | 2/23/15 |
| PART NAME | 10HP LAB SCROLL TRIPLEX FLOW SCHEMATIC | APPROVED BY | JBE |
| CHKD | AEK | DATE | 2/23/15 |
| APP'D | JA | DATE | 2/23/15 |
| SIZE | D | DATE | 2/23/15 |
| DWG NO | LST10B5 | | |