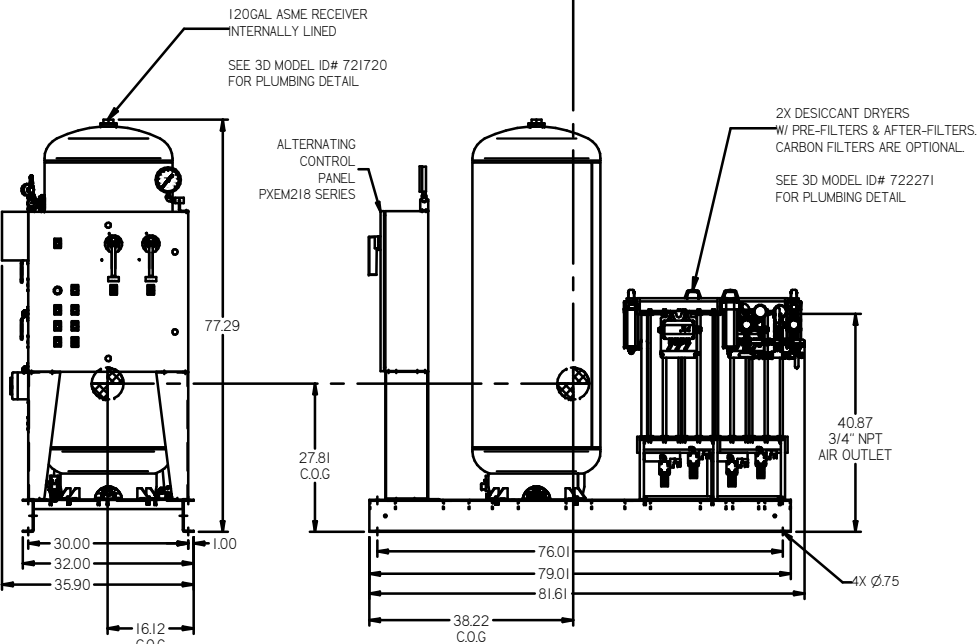
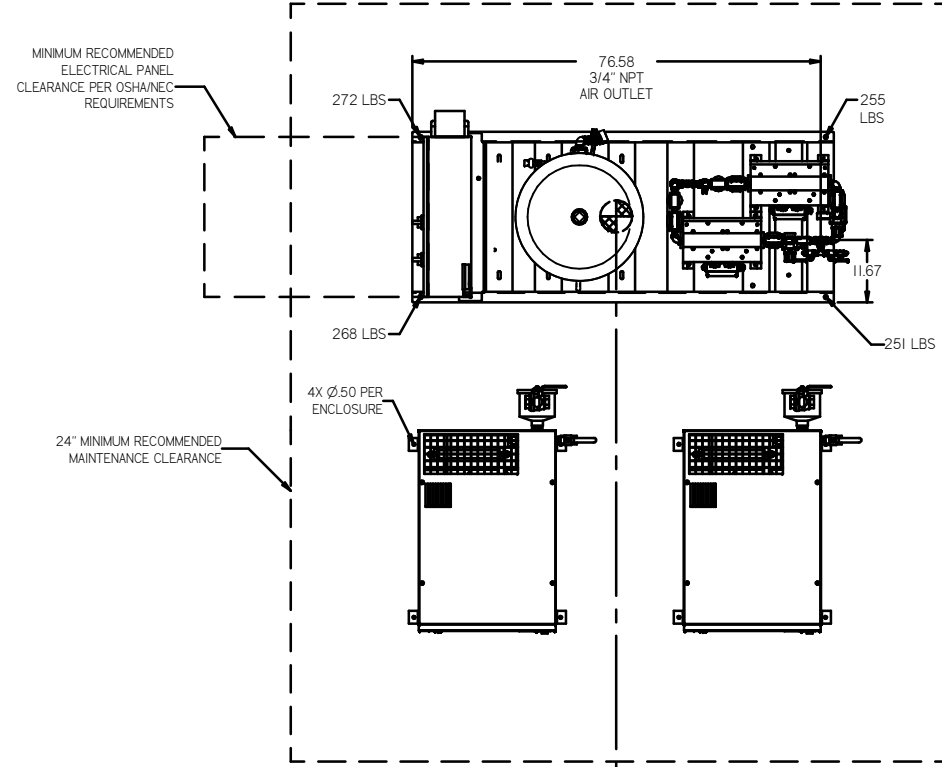


REV	ZONE	REVISION	DATE	ECN	NAME	CHKD
B-1	ALL	RELEASE TO PRODUCTION	9/28/07	31663	AEK	GES
C-1	ALL	UPDATED BUILD & FLOW TO CURRENT STANDARD	8/3/08	21907	AEK	GES
C-2	ALL	CORRECTED INLET PLUMBING & ORIENTATION	10/23/08	21907	AEK	GES
D-1	ALL	UPDATED TO NEW POWEREX ORDER	8/18/09	22100	AEK	GES
E-1	1 ALL	UPDATED TO NEW ENCLOSURE DESIGN	8/18/10	22394	AEK	GES
F-1	1 ALL	ADDED CENTER OF GRAVITY INFORMATION	11/19/12	22723	AEK	KMD
G-1	2 DR	ADDED RESERVE PRESSURE SWITCH	7/17/17	1982183	AEK	GES
H	ALL	CHANGED TO TRENT ORDER, MORGANTON TANK, UPDATED TO TEAM CENTER	8/14/19	198203029	GES	MMH

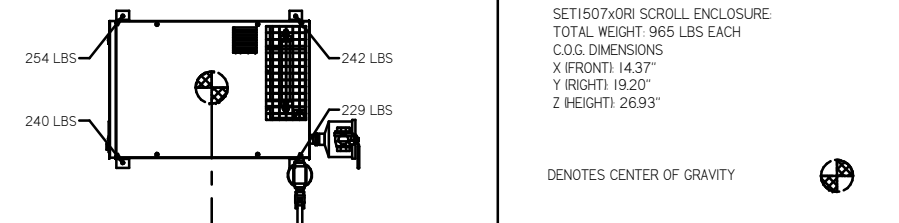


FRONT VIEW  
(TANK/DRYER SKID)

RIGHT VIEW  
(TANK/DRYER SKID)

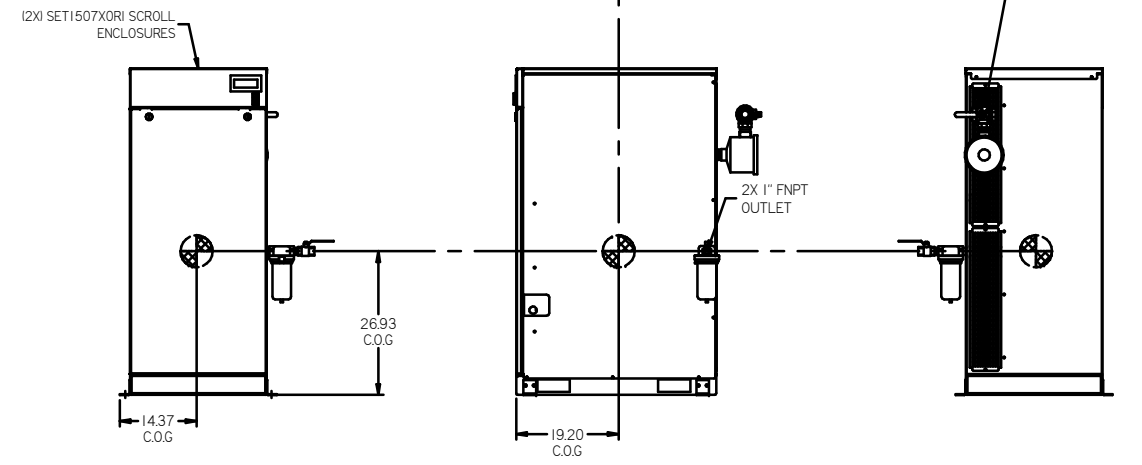
AIR TREATMENT SKID  
TOTAL WEIGHT: 1046 LBS  
C.O.G. DIMENSIONS  
X (FRONT): 16.12"  
Y (RIGHT): 38.22"  
Z (HEIGHT): 27.81"

DENOTES CENTER OF GRAVITY



SET1507X0R1 SCROLL ENCLOSURE  
TOTAL WEIGHT: 965 LBS EACH  
C.O.G. DIMENSIONS  
X (FRONT): 14.37"  
Y (RIGHT): 19.20"  
Z (HEIGHT): 26.93"

DENOTES CENTER OF GRAVITY



FRONT VIEW  
(SCROLL ENCLOSURE)

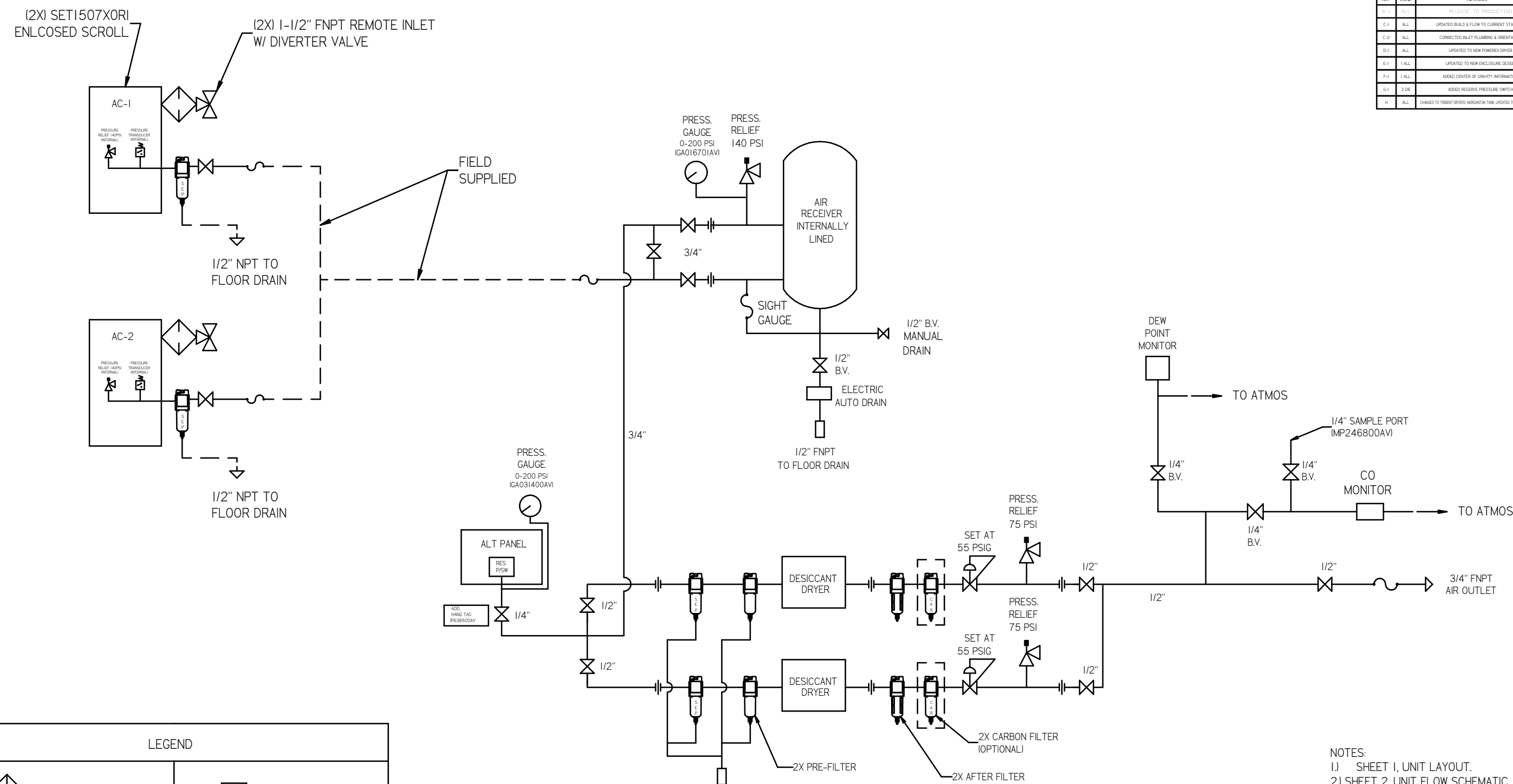
RIGHT VIEW  
(SCROLL ENCLOSURE)

REAR VIEW  
(SCROLL ENCLOSURE)

- NOTES:
- 1) SHEET 1, UNIT LAYOUT.
  - 2) SHEET 2, UNIT FLOW SCHEMATIC.
  - 3) INLET CONNECTIONS: 1-1/2" FNPT X 2.
  - 4) OUTLET CONNECTION: 3/4" FNPT X 1.
  - 5) POWER CONNECTION: 1- 208, 230, OR 460 VOLT
  - 6) WHEN PACKAGE IS INSTALLED INTO THE FACILITY, VERIFY THE INSTALLER REFERENCES TABLE 110.26 (A) (I) FOR MINIMUM WORKING AREA.

<p>MINUS DRAFT</p> <p>PLUS DRAFT</p>	<p>ADDITIONAL CONTROL</p> <p>BRINELL HARDNESS</p>	<p>Drawings to conform to the current revision of the following ANSI standards: 1:4 &amp; Multi-view and sectional view steps 1:4, 8R, Dimensioning and tolerancing</p>
<p>TOLERANCES NOT SPECIFIED:</p> <p>XX =</p> <p>XXX =</p> <p>Z (NEG.) =</p>	<p>AUTOCAD REL2008 LT</p> <p>INCH</p>	<p>DO NOT SCALE DRAWING FOR DIMENSIONS</p> <p>Sheet 1 of 2</p> <p>SCALE 1:18</p>
<p>CONFIDENTIAL DISCLOSURE</p> <p>This drawing is the property of POWEREX, INC. OF THE SCOTT FETZER COMPANY and subject to return on demand. Its contents are confidential and must not be copied or submitted to outside parties for use or examination.</p>		
<p>MATERIAL: N/A</p> <p>PART NAME: MEDICAL SCROLL 15HP DUPLEX</p>	<p>DRWN BY: AEK</p> <p>CHECKED BY: GES</p> <p>9/28/07</p>	<p>APPROVED BY: DMS</p> <p>9/28/07</p> <p>9/28/07</p> <p><b>POWEREX</b></p> <p>15HP DUPLEX</p> <p>MSED150</p>

REV	ZONE	REVISION	DATE	ECN	NAME	CHKD
B	ALL	RELEASE TO PRODUCT DEV	1/28/07	21608	AEK	GES
C-1	ALL	UPDATED BUILD & FLOW TO CURRENT STANDARD	6/3/08	21907	AEK	GES
C-2	ALL	CORRECTED INLET PLUMBING & ORIENTATION	10/23/08	21907	AEK	GES
D-1	ALL	UPDATED TO NEW POWDER DRYER	8/19/09	22120	AEK	GES
E-1	1 ALL	UPDATED TO NEW ENCLOSURE DESIGN	6/18/10	22394	AEK	GES
F-1	1 ALL	ADDED CENTER OF GRAVITY INFORMATION	11/18/12	22723	AEK	KMD
G-1	2 DB	ADDED RESERVE PRESSURE SWITCH	7/17/17	PXC0187	AEK	GES
H	ALL	CHANGED TO TREAT DRYER MOUNTAIN TANK, UPDATED TO TEAM CENTER	8/14/19	HC220128	GES	MWH



LEGEND

	INTAKE FILTER		REGULATOR
	AIR FILTER		CHECK VALVE
	BALL VALVE		SEPERATOR
	CARBON FILTER		FLEX JOINT
	DIVERTER VALVE		UNION

- NOTES:  
 1) SHEET 1, UNIT LAYOUT.  
 2) SHEET 2, UNIT FLOW SCHEMATIC.  
 3) INLET CONNECTIONS: 1-1/2" FNPT X 2.  
 4) OUTLET CONNECTION: 3/4" FNPT X 1.  
 5) POWER CONNECTION: 1- 208, 230, OR 460 VOLT

<p>MINUS DRAFT</p> <p>PLUS DRAFT</p>	<p>ADDITIONAL CONTROL REQ'D</p> <p>BRINELL HARDNESS</p>	<p>Drawings to conform to the current revision of the following ANSI standards:</p> <p>1:4, 3 Multi and sectional view dsgs.</p> <p>1:4, 3rd Dimensioning and Dimensioning</p>
<p>TOLERANCES NOT SPECIFIED</p> <p>XX ±</p> <p>XXX ±</p> <p>∠ DEG ±</p>	<p>AUTOCAD</p> <p>REL2008 LT</p> <p>INCH</p>	<p>DO NOT SCALE DRAWING FOR DIMENSIONS</p> <p>Sheet 2 of 2</p> <p>SCALE 1:18</p>
<p>This drawing is the property of POWEREX, INC. of THE SCOTT FETTER COMPANY and subject to return on demand. Its contents are confidential and must not be copied or submitted to outside parties for use or examination.</p>		
<p>MATERIAL</p> <p>N/A</p>	<p>DRWN BY</p> <p>AEK</p>	<p>CHECKED BY</p> <p>GES</p>
<p>PART NAME</p> <p>ENCLOSED SCROLL FLOW SCHEMATIC</p>	<p>DATE</p> <p>9/28/07</p>	<p>DATE</p> <p>9/28/07</p>
<p>POWEREX</p> <p>150 PRODUCTION DRIVE, HARRISBURG, OHIO 45630</p> <p>PH: 888-768-7979 FAX: 614-353-3105</p>		<p>SIZE</p> <p>D</p>