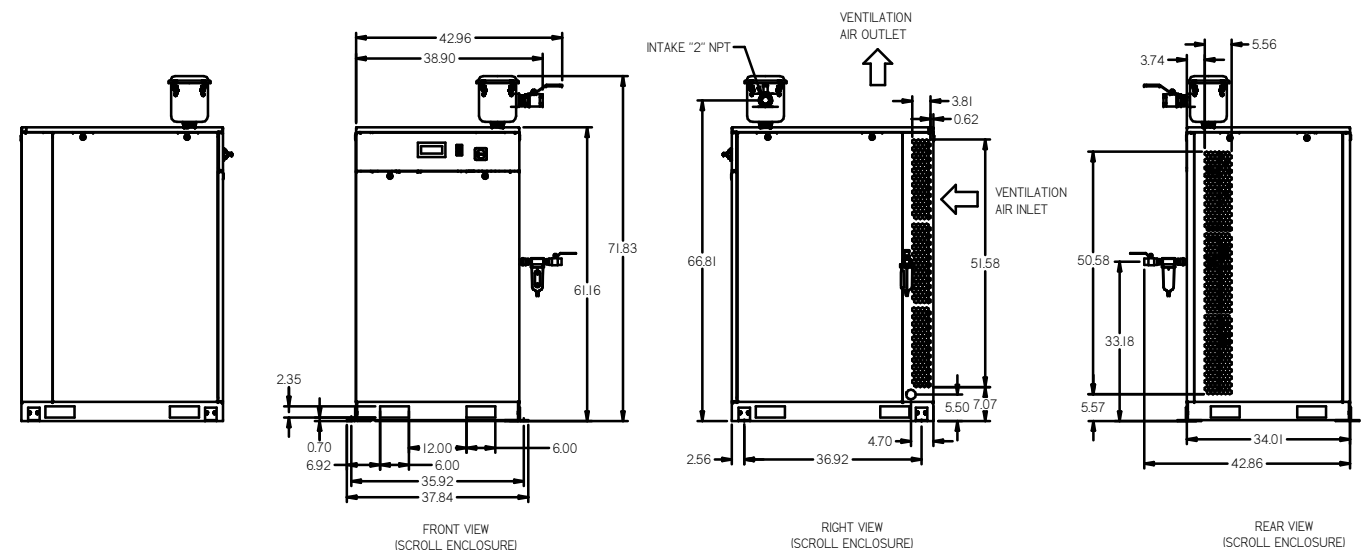
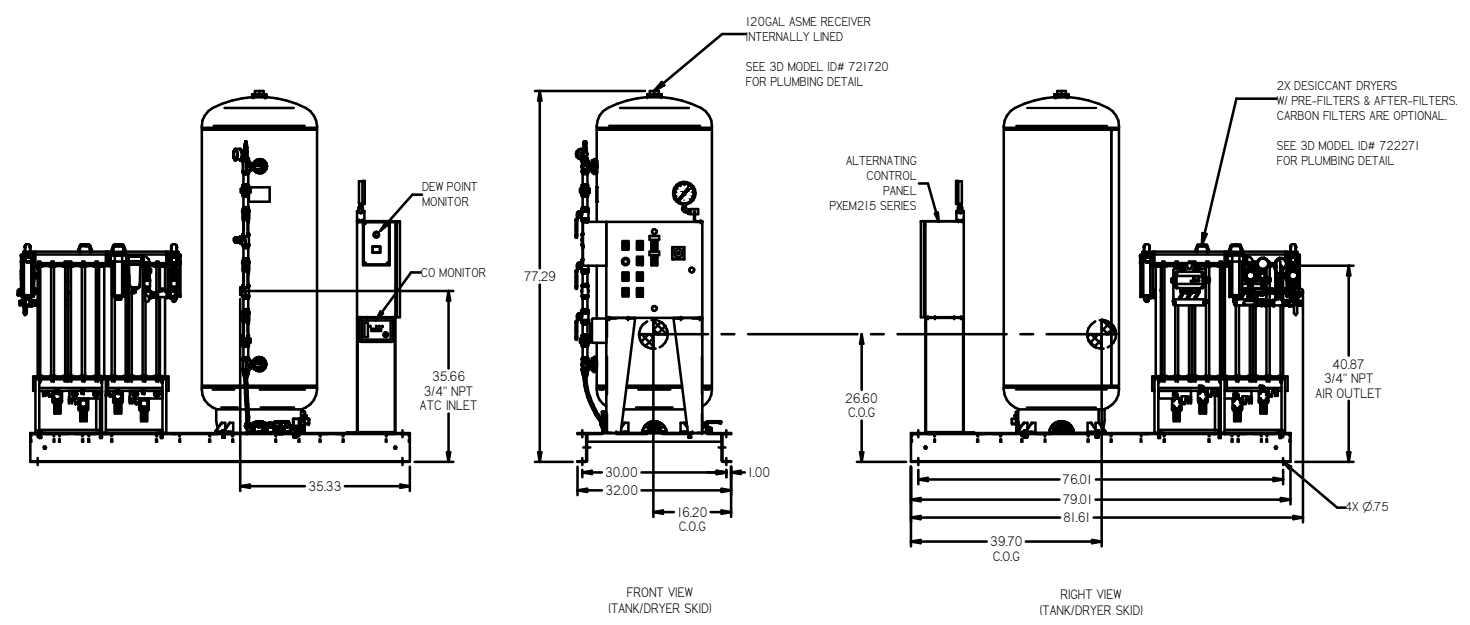
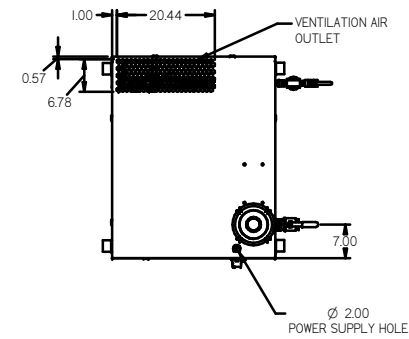
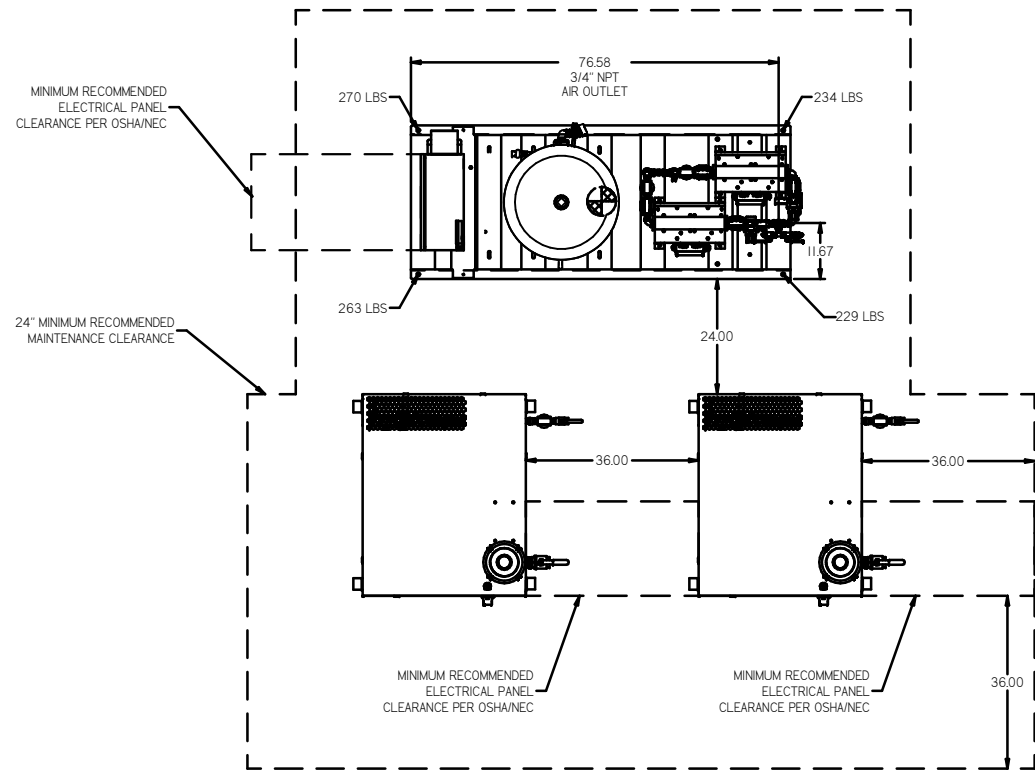


REV	ZONE	REVISION	DATE	ECN	NAME	CHKD
1	ALL	RELEASE TO PRODUCTION	12/29/16	122311	RES	JA
B-2	HALL ZALL	ADDED SEP. CORR. ALT. PNL. CORR. NOTES. CORRECTED FLOW	12/31/17	PRECO080	GES	JA
C	ALL	CHANGED TO TREAT DRYERS MORGAN ON TANK UPDATED TO TEAM CENTER	01/14/19	PRECO2025	GES	MAR



SEDI5B7 SCROLL ENCLOSURE
TOTAL WEIGHT: 1049 LBS

AIR TREATMENT SKID
TOTAL WEIGHT: 996 LBS

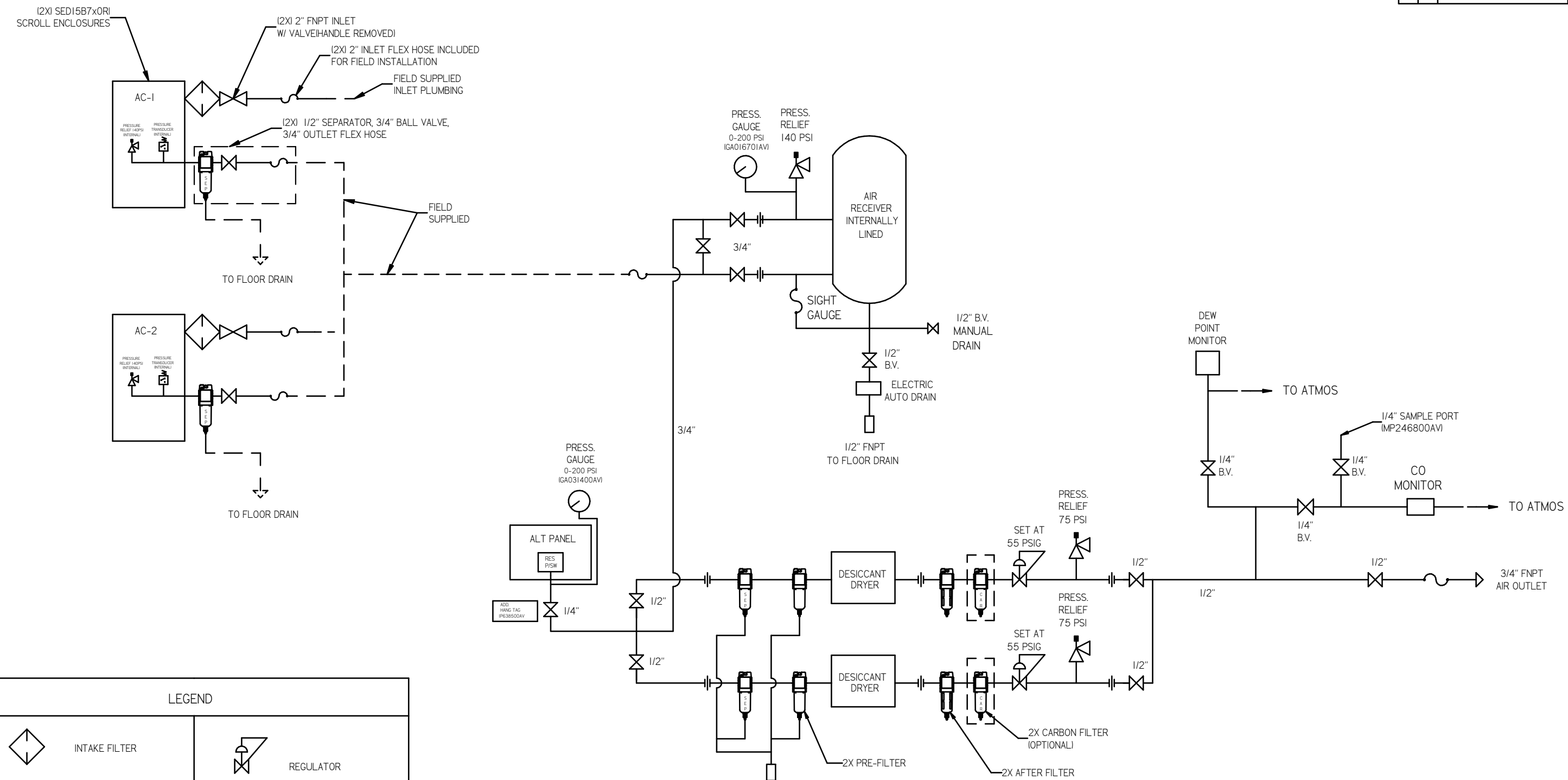
X (FRONT): 16.2"
Y (RIGHT): 39.7"
Z (HEIGHT): 26.6"

DENOTES CENTER OF GRAVITY

- NOTES:
- 1) SHEET 1, UNIT LAYOUT.
 - 2) SHEET 2, UNIT FLOW SCHEMATIC.
 - 3) INLET CONNECTIONS: 2" FNPT X 2.
 - 4) SYSTEM OUTLET CONNECTION: 3/4" FNPT X 1.
 - 5) POWER CONNECTION EACH ENCLOSURE: 1-230, OR 460 VOLT, ALTERNATION PANEL: 115V
 - 6) WHEN PACKAGE IS INSTALLED INTO THE FACILITY, VERIFY THE INSTALLER REFERENCES TABLE 110.26 (A) (I) FOR MINIMUM WORKING AREA.
 - 7) DIRECTION OF INTAKE CONNECTIONS MAY BE MODIFIED AT INSTALLATION BY ADJUSTING PIPE THREAD CONNECTIONS.

SYMBOL LEGEND ⊖ = MINUS DRAFT ⊕ = PLUS DRAFT ⊗ = ADDITIONAL CONTROL REQ'D ⊘ = BRINELL HARDNESS		Drawings to conform to the current revision of the following ANSI standards: 11.3 Multi and sectional view degn. 11.8.2 Dimensioning and tolerancing
TOLERANCES NOT SPECIFIED XX ± .005 XXX ± .002 Z DEC. 3 ±		AUTOCAD REL2009 L1 INCH DO NOT SCALE DRAWING FOR DIMENSIONS Sheet 1 of 2 SCALE 1:20
CONFIDENTIAL DISCLOSURE This drawing is the property of the POWEREX, INC. of the SCOTT FETZER COMPANY and subject to return on demand. Its contents are confidential and must not be copied or submitted to outside parties for use or inspection.		DRAWN BY: RK CHECKED BY: JA APPROVED BY: JA DATE: 12/8/16, 12/8/16, 12/8/16, 12/8/16
MATERIAL: N/A		POWEREX 151 PRODUCTION DRIVE, HUNTSVILLE, AL 35894 TEL: 256-838-7872 FAX: 256-838-1100
PART NAME: MEDICAL SCROLL 15HP DUPLEX		DWG NO: MS-ED15B4 SIZE: D

REV	ZONE	REVISION	DATE	ECN	NAME	CHKD
B-1	ALL	RELEASE TO PRODUCTION	12/8/16	PK	JA	JA
B-2	ALL	ADDED SEP CORR ALT PNL CORR NOTES CORRECTED FLOW	12/9/17	PKC0181	GES	JA
C	ALL	CHANGED TO TREAT ORIGIN WORKING TIME UPDATED TO TOW CENTER	8/4/19	PKC02022	GES	MH



LEGEND

	INTAKE FILTER		REGULATOR
	AIR FILTER		CHECK VALVE
	BALL VALVE		SEPERATOR
	CARBON FILTER		FLEX JOINT
	DIVERTER VALVE		UNION

- NOTES
- 1) SHEET 1, UNIT LAYOUT.
 - 2) SHEET 2, UNIT FLOW SCHEMATIC.
 - 3) INLET CONNECTIONS 2" FNPT X 2.
 - 4) SYSTEM OUTLET CONNECTION: 3/4" FNPT X 1.
 - 5) POWER CONNECTION EACH ENCLOSURE: 1-230, OR 460 VOLT, ALTERNATION PANEL: 115V
 - 6) WHEN PACKAGE IS INSTALLED INTO THE FACILITY, VERIFY THE INSTALLER REFERENCES TABLE 110.26 (A) III FOR MINIMUM WORKING AREA.
 - 7) DIRECTION OF INTAKE CONNECTIONS MAY BE MODIFIED AT INSTALLATION BY ADJUSTING PIPE THREAD CONNECTIONS.

<p>SYMBOL LEGEND</p> <p>⊖ = MINUS DRAFT</p> <p>⊕ = PLUS DRAFT</p> <p>⊗ = BRINELL HARDNESS</p>	<p>ADDITIONAL CONTROL REQ'D</p> <p>BRINELL HARDNESS</p>	<p>Drawings to conform to the current revision of the following standards:</p> <p>1:4 3 Multi and section view depth</p> <p>1:8 2D Dimensioning and tolerancing</p>
<p>TOLERANCES NOT SPECIFIED</p> <p>XX ±</p> <p>XXX ±</p> <p>4 DEC ±</p>	<p>AUTOCAD REL2008 LT</p> <p>INCH</p>	<p>DO NOT SCALE DRAWING FOR DIMENSIONS</p> <p>Sheet 2 of 2</p> <p>SCALE 1:18</p>
<p>CONFIDENTIAL DISCLOSURE</p> <p>This drawing is the property of the POWEREX, INC. of the SODIT FETZER COMPANY and subject to return on demand. Its contents are confidential and must not be copied or submitted to outside parties for use or reproduction.</p>		
<p>MATERIAL</p> <p>N/A</p>	<p>DRWN BY</p> <p>RK</p>	<p>CHECKED BY</p> <p>JA</p>
<p>PART NAME</p> <p>ENCLOSED SCROLL FLOW SCHEMATIC</p>	<p>DWG NO</p> <p>MSED15B4</p>	<p>APPROVED BY</p> <p>JA</p> <p>CT</p>
<p>DATE</p> <p>12/8/16</p>		<p>12/8/16</p> <p>12/8/16</p> <p>12/8/16</p>
<p>POWEREX</p> <p>THE SCROLL SECTOR LEADER</p>		
<p>SIZE</p> <p>D</p>		<p>12/11/2014</p>