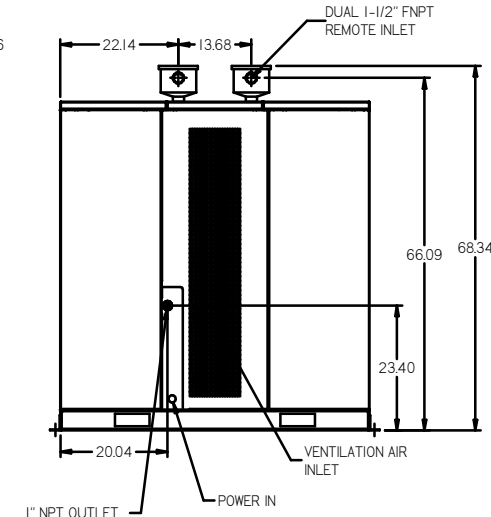
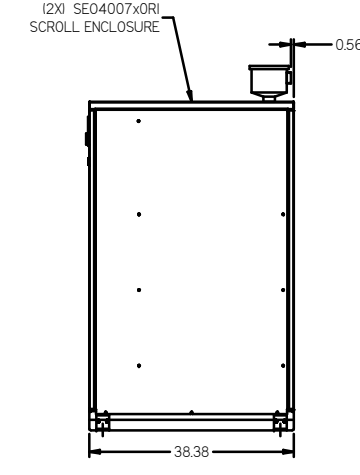
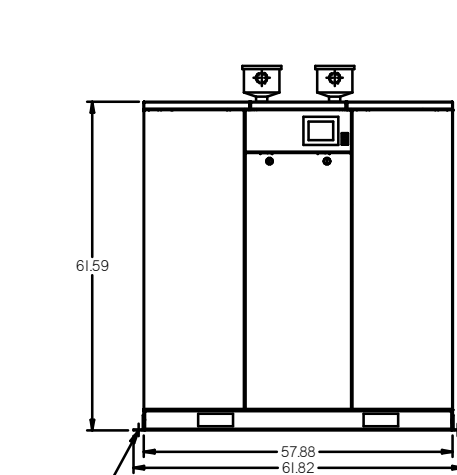
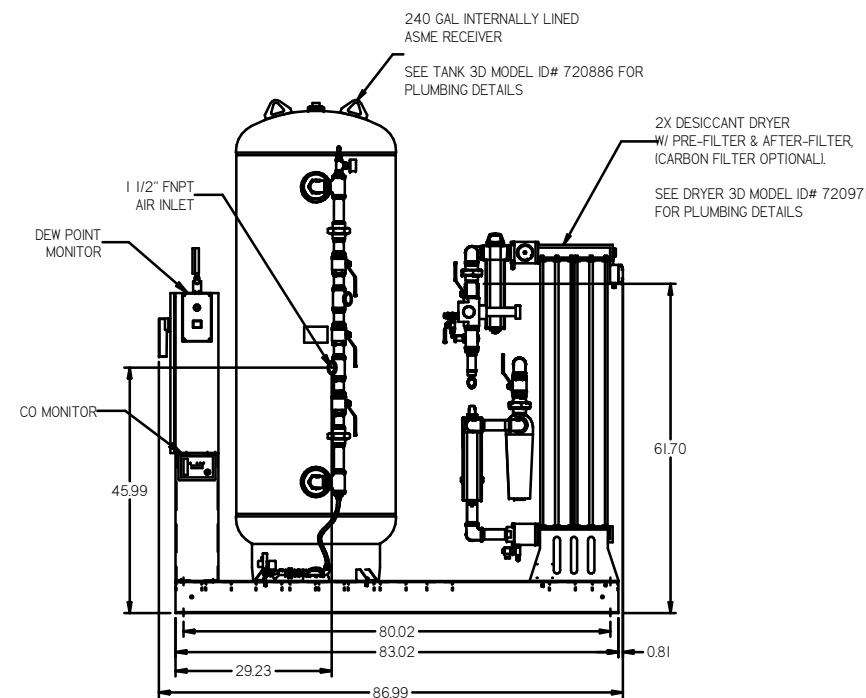
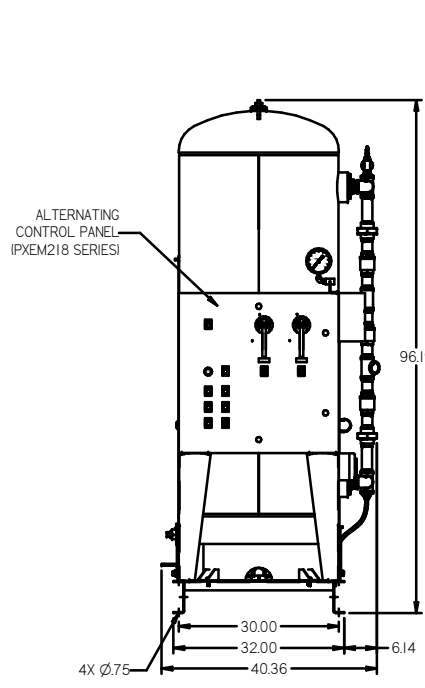
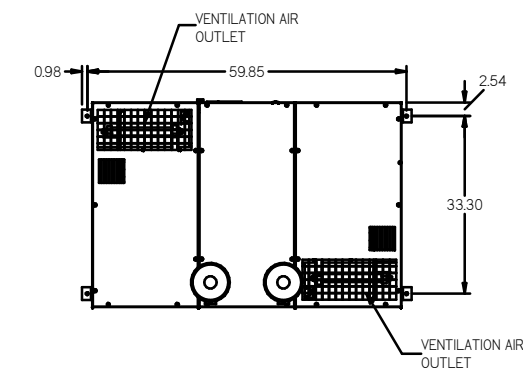
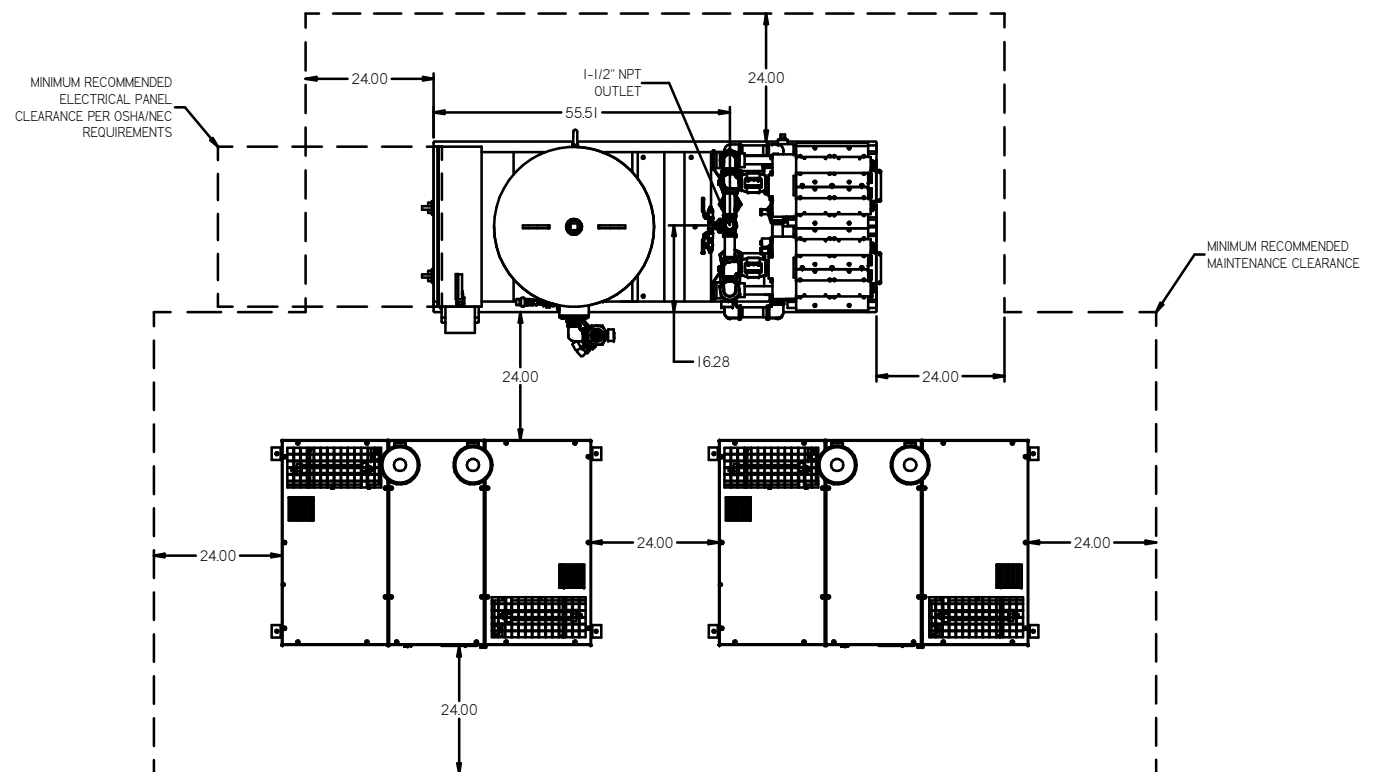


REV	ZONE	REVISION	DATE	ECN	NAME	CHKD
0	ALL	RELEASED FOR PRODUCTION	10/17/07	21608	AEK	GES
C-1	1 ALL	REPLACED DRIVER W/ CORRECT MODEL, RELOCATED IN SCROLL UNIT	11/7/08	21907	AEK	GES
C-2	ALL	UPDATED BUILD & FLOW TO CURRENT STANDARDS	6/2/08	21907	AEK	GES
C-3	ALL	CORRECTED INLET DETAILS	9/25/08	21907	AEK	GES
D-1	2 ALL	UPDATED FLOW TO CURRENT PRODUCTION	6/20/10	22348	AEK	GES
D-2	1 ALL	CHANGED ATC SKID CONFIG FOR BETTER SERVICEABILITY	6/24/10	22348	AEK	GES
E-1	ALL	UPDATED TO POWREX SKID ENCLOSURE	5/9/11	22394	AEK	GES
F-1	1 BS	ADDED FILTER CALL-OUTS TO DRYER CALL-OUT	8/8/11	22546	AEK	GES
G-1	1 ALL	UPDATED TO NANO DRYERS	8/10/17	PRE02174	AEK	GES
H	ALL	CHANGED TO TREAT DRYER, MORGANTON TANK	5/8/19	PRE02291	GES	MWH



FRONT VIEW (TANK/DRYER SKID)

RIGHT VIEW (TANK/DRYER SKID)

FRONT VIEW (SCROLL ENCLOSURE)

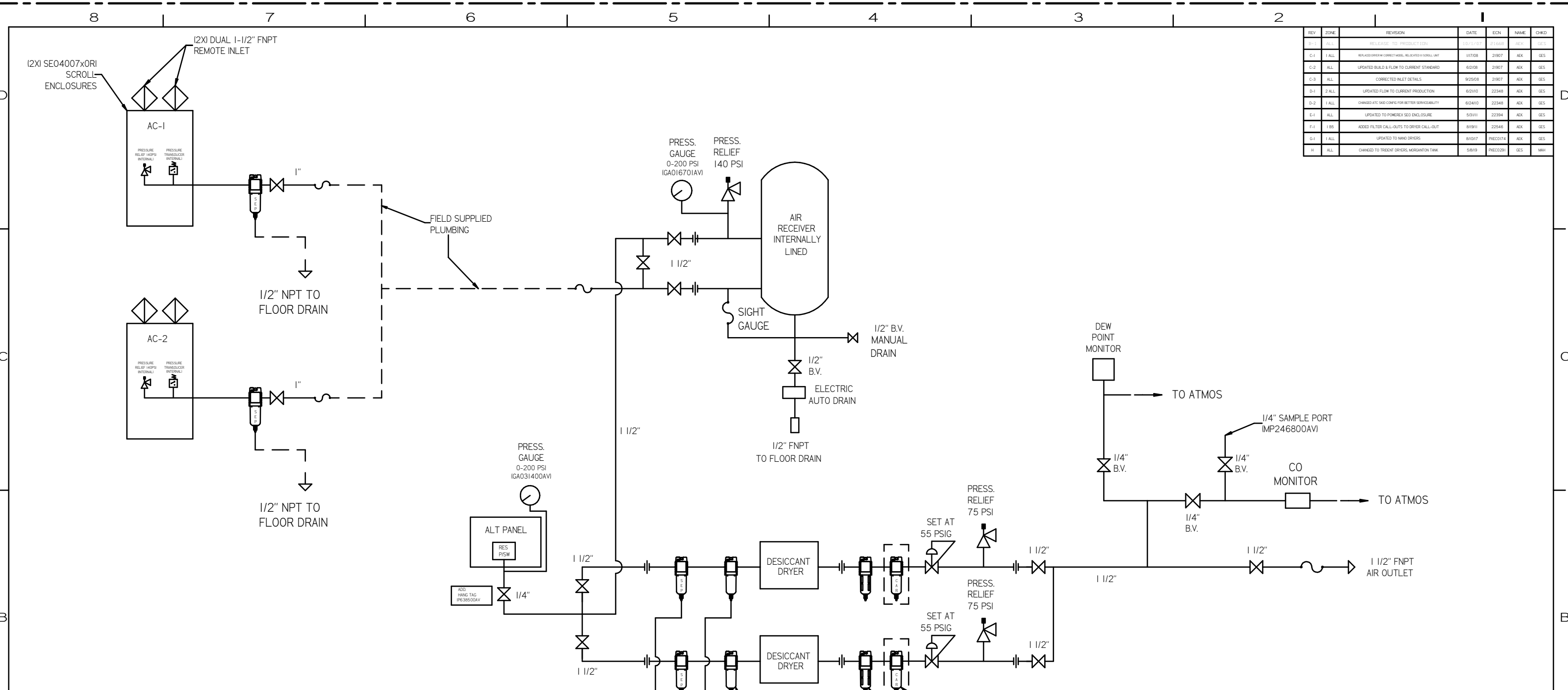
RIGHT VIEW (SCROLL ENCLOSURE)

REAR VIEW (SCROLL ENCLOSURE)

- NOTES
 1) SHEET 1, UNIT LAYOUT.
 2) SHEET 2, UNIT FLOW SCHEMATIC.
 3) INLET CONNECTIONS: 1-1/2" FNPT X 4.
 4) OUTLET CONNECTION: 1-1/2" FNPT X 1.
 5) POWER CONNECTION 1- 208, 230, OR 460 VOLT
 6) WHEN PACKAGE IS INSTALLED INTO THE FACILITY, VERIFY THE INSTALLER REFERENCES TABLE 110.26 (A) (I) FOR MINIMUM WORKING AREA.

SYMBOL LEGEND ⊖ = MINUS DRAFT ⊕ = PLUS DRAFT ⊗ = ADDITIONAL CONTROL REQ'D ⊘ = BRINELL HARDNESS		Drawings to conform to the current revision of the following ANSI standards: Y14.3 Multi and sectional viewings Y14.9 Dimensioning and tolerancing
TOLERANCES NOT SPECIFIED XX ± XXX ± 2 DEC. ±	AUTOCAD REL2008 L1 INCH	DO NOT SCALE DRAWING FOR DIMENSIONS Sheet 1 of 2 SCALE 1:18
CONFIDENTIAL ENCLOSURE This drawing is the property of the CAMPBELL GROUP of the SCOTT FETZER COMPANY and subject to return on demand. Its contents are confidential and must not be copied or submitted to outside parties for use or inspection.		
MATERIAL N/A		DRAWN BY AEK
PART NAME MEDICAL SCROLL 40HP DUPLEX		CHECKED BY GES
DWG NO MS400		APPROVED BY DMS DB
DATE 10/1/07		DATE 10/1/07
DATE 10/1/07		DATE 10/1/07
DATE 10/1/07		DATE 10/1/07
DATE 10/1/07		DATE 10/1/07

REV	ZONE	REVISION	DATE	ECN	NAME	CHKD
B-1	ALL	RELEASE TO PRODUCTION	10/1/07		AEK	GES
C-1	1 ALL	REMOVED DRAIN CORRECT MODEL, RELATED TO SCROLL UNIT	1/17/08		AEK	GES
C-2	ALL	UPDATED BUILD & FLOW TO CURRENT STANDARD	6/2/08		AEK	GES
C-3	ALL	CORRECTED INLET DETAILS	9/25/08		AEK	GES
D-1	2 ALL	UPDATED FLOW TO CURRENT PRODUCTION	6/2/10		AEK	GES
D-2	1 ALL	CHANGED ATC AND CONTROL FOR BETTER SERVICEABILITY	6/24/10		AEK	GES
E-1	ALL	UPDATED TO POWEREX SEB ENCLOSURE	5/9/11		AEK	GES
F-1	1 BS	ADDED FILTER CALL-OUTS TO DRYER CALL-OUT	8/19/11		AEK	GES
G-1	1 ALL	UPDATED TO NANO DRYERS	8/10/17		PREC0174	AEK
H	ALL	CHANGED TO TRENK DRYER, MORGANTON TANK	5/8/19		PREC0209	GES



LEGEND

	INTAKE FILTER		REGULATOR
	AIR FILTER		CHECK VALVE
	BALL VALVE		SEPERATOR
	CARBON FILTER		FLEX JOINT
	DIVERTER VALVE		UNION

NOTES
 1) SHEET 1, UNIT LAYOUT.
 2) SHEET 2, UNIT FLOW SCHEMATIC.
 3) INLET CONNECTIONS: 1-1/2" FNPT X 4.
 4) OUTLET CONNECTION: 1-1/2" FNPT X 1.
 5) POWER CONNECTION: 1- 208, 230, OR 460 VOLT
 6) WHEN PACKAGE IS INSTALLED INTO THE FACILITY, VERIFY THE INSTALLER REFERENCES TABLE 110.26 (A) (I) FOR MINIMUM WORKING AREA.

SYMBOL LEGEND = MINUS DRAFT = PLUS DRAFT = ADDITIONAL CONTROL REQ'D = BRINELL HARDNESS	Drawings to conform to the current revision of the following ANSI standards: Y14.3 Multi and sectional view dsgs. Y14.9 Dimensioning and tolerancing.
TOLERANCES NOT SPECIFIED XX ± .001 YY ± .002 ZZ (NEG.) ± .005	AUTOCAD REL2008 LT INCH DO NOT SCALE DRAWING FOR DIMENSIONS Sheet 2 of 2 SCALE 1:18
CONFIDENTIAL DISCLOSURE This drawing is the property of the CAMPBELL GROUP of the SCOTT FETZER COMPANY and subject to return on demand. Its contents are confidential and must not be copied or submitted to outside parties for use or examination.	DRAWN BY: AEK CHECKED BY: GES APPROVED BY: DMS, DB 10/1/07, 10/1/07, 10/1/07, 10/1/07
MATERIAL: N/A PART NAME: ENCLOSED SCROLL FLOW SCHEMATIC DWG NO: MSED400 SIZE: D	 THE PRODUCTION BRINE HARSHNESS TEST CELL TEL: 386-763-2976 FAX: 386-763-3422