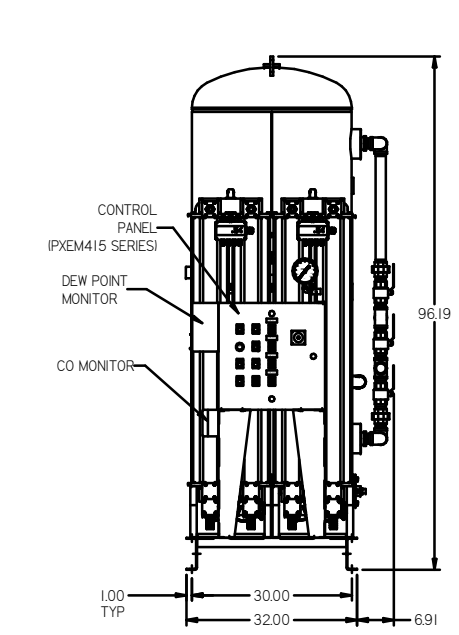
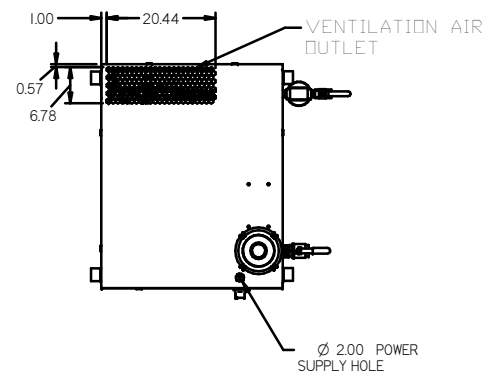
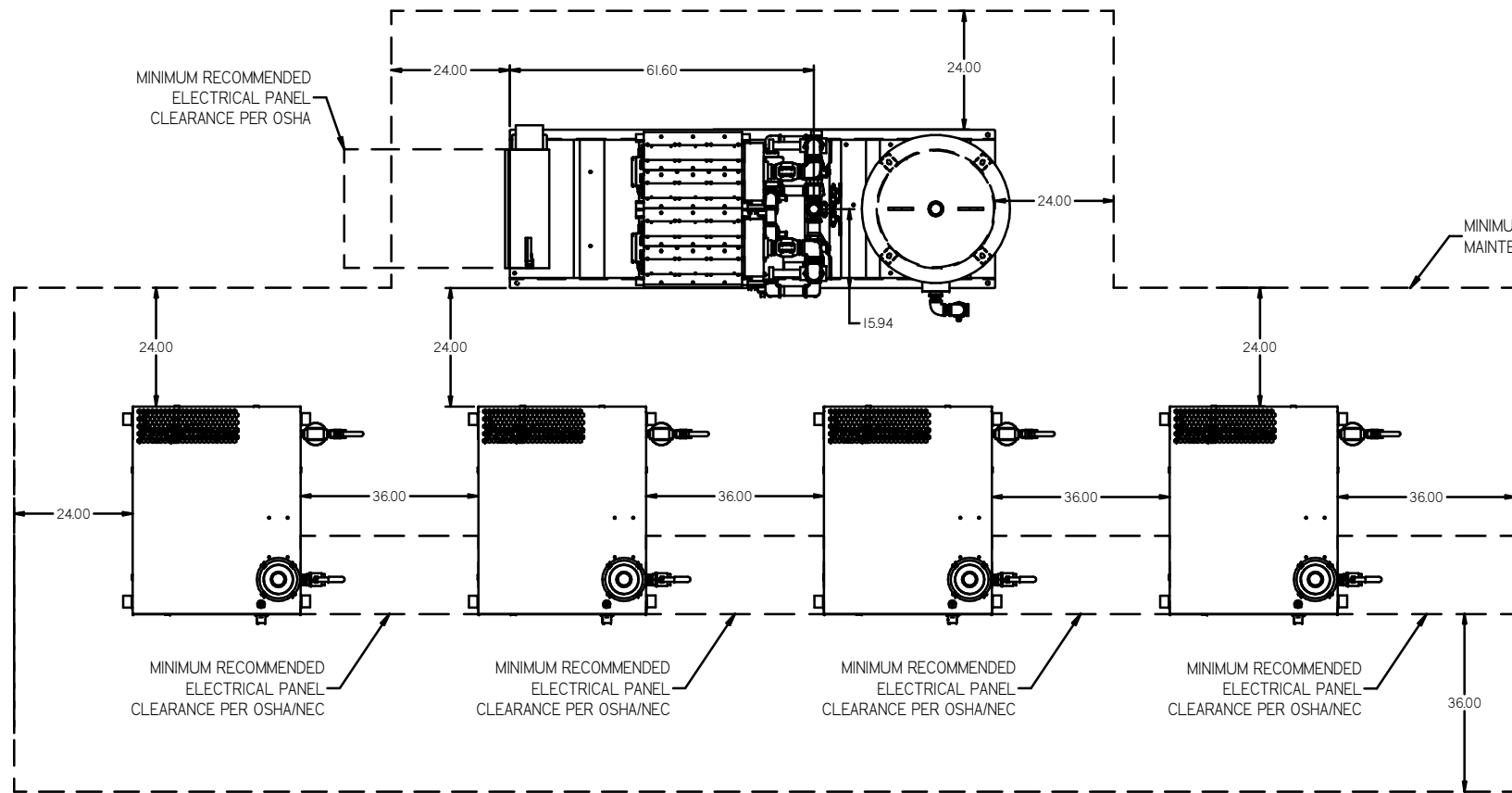
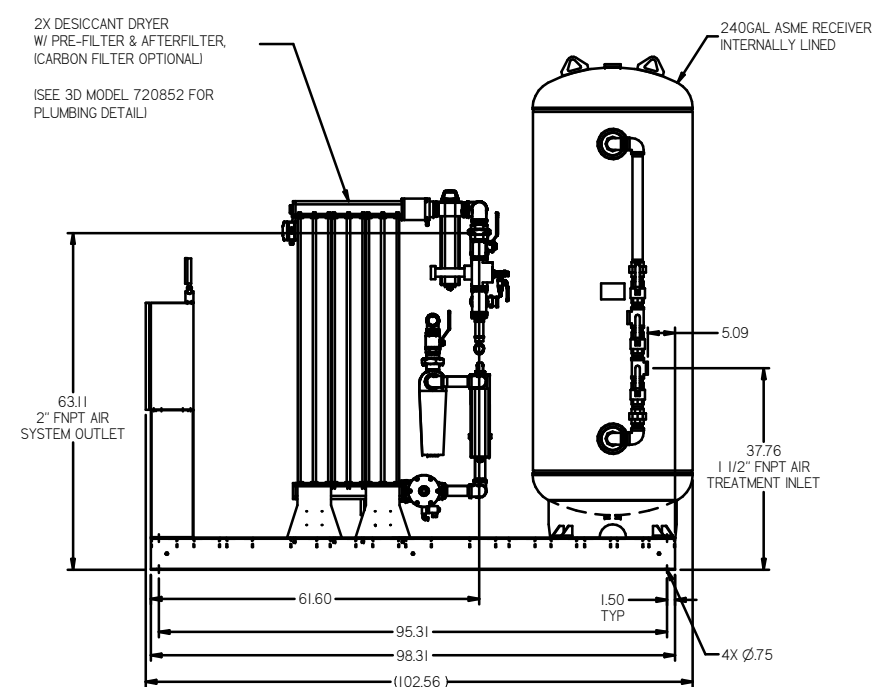


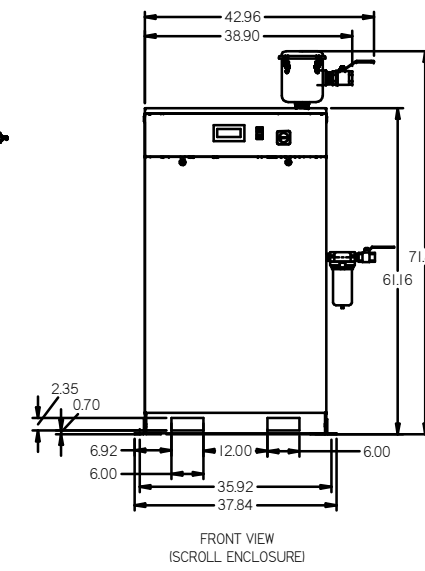
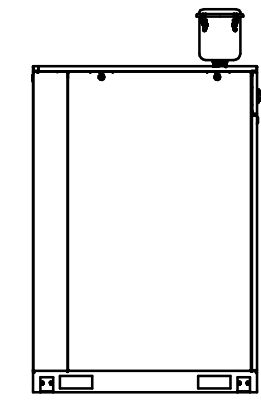
REV	ZONE	REVISION	DATE	ECN	NAME	CHKD
B.1	ALL	RELEASE TO PRODUCT USE	12/18/15		RK	JA
B.2	SKILL	ADDED SEP CORR ALT PNL ORDER AND NOTES CORRECTED FLOW	1/30/17		PXEC0180	GES JA
C	ALL	UPDATED TO TRIDENT DRYER, MORGANTON TANK, TC	4/29/19		PXEC0291	GES SJA



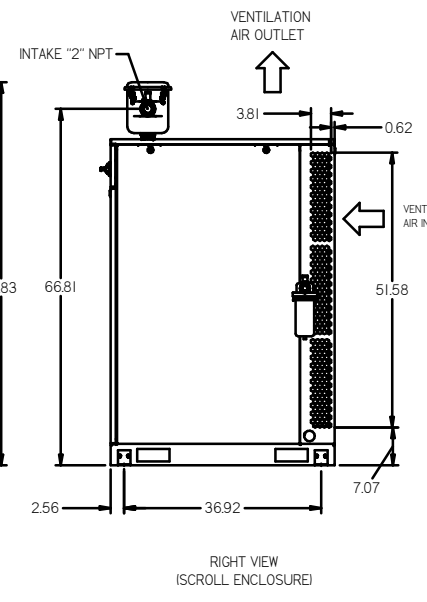
FRONT VIEW
(TANK/DRYER SKID)



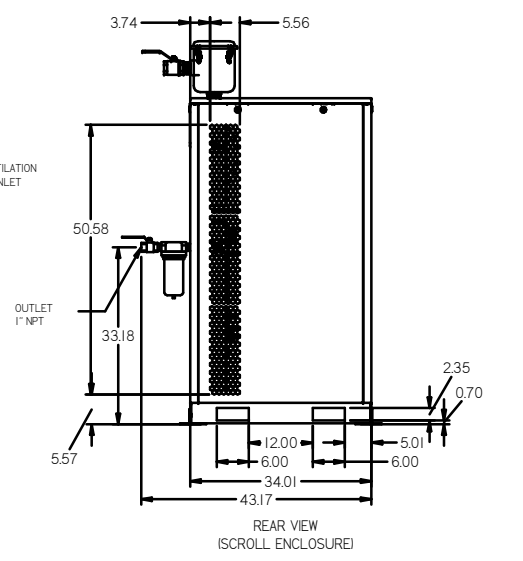
RIGHT VIEW
(TANK/DRYER SKID)



FRONT VIEW
(SCROLL ENCLOSURE)



RIGHT VIEW
(SCROLL ENCLOSURE)

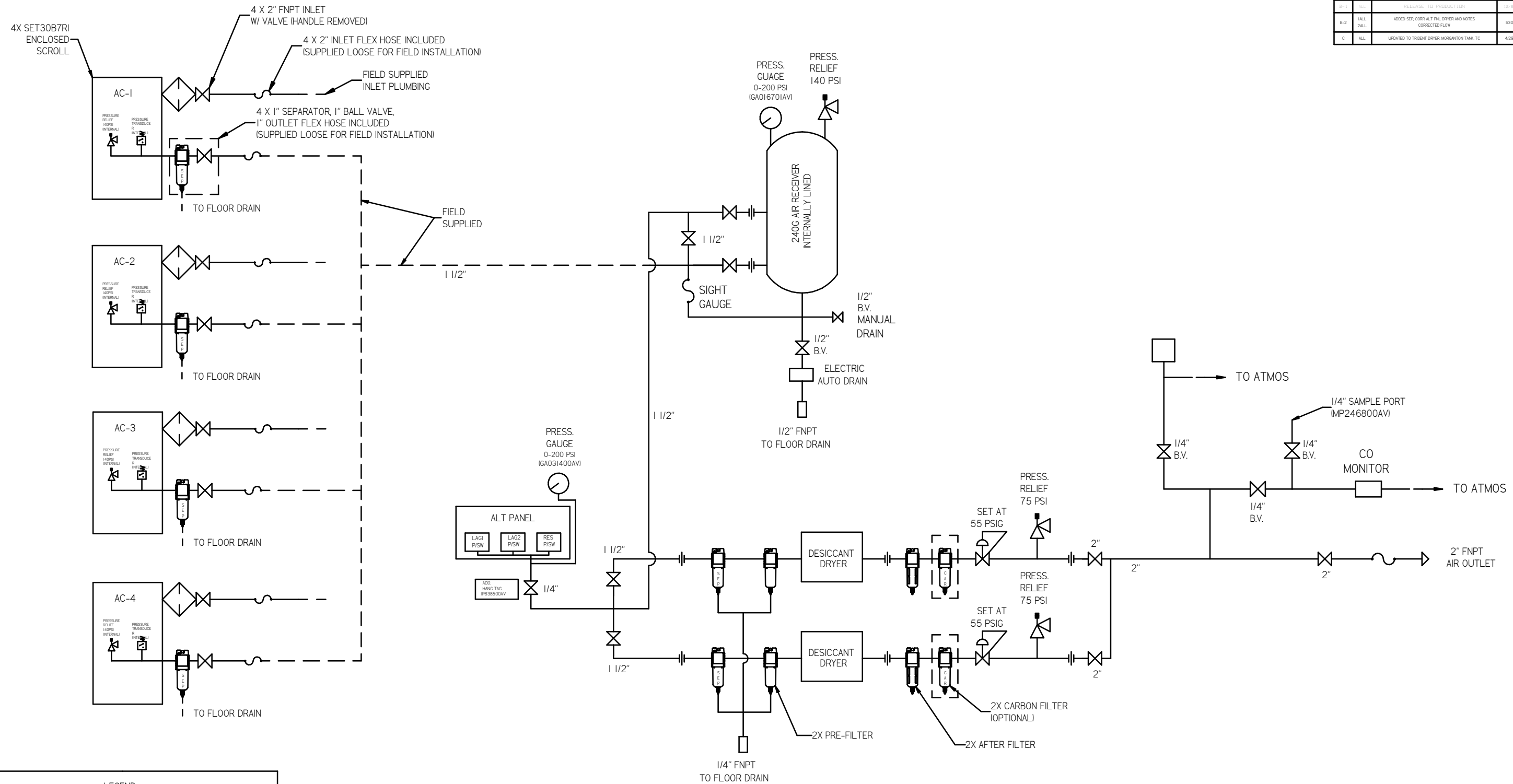


REAR VIEW
(SCROLL ENCLOSURE)

- NOTES
- 1) SHEET 1, UNIT LAYOUT.
 - 2) SHEET 2, UNIT FLOW SCHEMATIC.
 - 3) INLET CONNECTIONS: 2" FNPT X 4.
 - 4) SYSTEM OUTLET CONNECTION: 2" FNPT X 1.
 - 5) POWER CONNECTION EACH ENCLOSURE: 1-230, OR 480 VOLT, ALTERNATION PANEL: 115V
 - 6) WHEN PACKAGE IS INSTALLED INTO THE FACILITY, MAKE SURE THAT THE INSTALLER REFERENCES TABLE 110.26 (A) III FOR MINIMUM WORKING AREA.
 - 7) DIRECTION OF INTAKE CONNECTIONS MAY BE MODIFIED AT INSTALLATION BY ADJUSTING PIPE THREAD CONNECTIONS.

TOLERANCES NOT SPECIFIED XX ± XXX ± \angle (DEG) ±	AUTOCAD LT 2014 INCH	DO NOT SCALE DRAWING FOR DIMENSIONS Sheet 1 of 2 SCALE 1:18
MATERIAL N/A	PART NAME MEDICAL SCROLL 30HP QUADPLEX	APPROVED BY ENGINEERING: RFG/MBRTG 12/9/15 12/8/16 12/8/16 12/8/16 150 PRODUCTION DRIVE, HARRISON, OHIO 45030 PH: 888-762-7078 FAX: 513-383-3155
DWG NO MSEQ30B6		SIZE D

REV	ZONE	REVISION	DATE	ECN	NAME	CHKD
1	ALL	RELEASE TO PRODUCTION	10/20/15		JK	JK
B-2	ALL	ADDED SEP. CORR. ALT. PNL. DRYER AND NOTES CORRECTED FLOW	10/01/17		GES	JA
C	ALL	UPDATED TO TROENT DRYER, MORGANTON TANK, TC	4/29/19		PRECO291	GES



LEGEND	
	INTAKE FILTER
	AIR FILTER
	BALL VALVE
	CARBON FILTER
	DIVERTER VALVE
	REGULATOR
	CHECK VALVE
	SEPERATOR
	FLEX JOINT
	UNION

- NOTES:
 1) SHEET 1, UNIT LAYOUT.
 2) SHEET 2, UNIT FLOW SCHEMATIC.
 3) INLET CONNECTIONS: 2" FNPT X 4.
 4) SYSTEM OUTLET CONNECTION: 2" FNPT X 1.
 5) POWER CONNECTION EACH ENCLOSURE: 1-230, OR 460 VOLT, ALTERNATION PANEL: 115V
 6) WHEN PACKAGE IS INSTALLED INTO THE FACILITY, MAKE SURE THAT THE INSTALLER REFERENCES TABLE 110.26 (A) III FOR MINIMUM WORKING AREA.
 7) DIRECTION OF INTAKE CONNECTIONS MAY BE MODIFIED AT INSTALLATION BY ADJUSTING PIPE THREAD CONNECTIONS.

MINUS DRAFT PLUS DRAFT ADDITIONAL CONTROL REQ'D BRINELL HARDNESS	TOLERANCES NOT SPECIFIED XX ± XXX ± Z (DEG) ±	AUTOCAD LT 2014 INCH	DO NOT SCALE DRAWING FOR DIMENSIONS Sheet 2 of 2 SCALE 1:18
CONFIDENTIAL DISCLOSURE This drawing is the property of POWEREX, INC. of the SCOTT PFEIZER COMPANY and subject to return on demand. It contains confidential information and must not be copied or submitted to outside parties for use or examination.		DRAWN BY: RK CHECKED BY: JA 12/8/16	APPROVED BY: JA 12/8/16 150 PRODUCTION DRIVE, HARRISBURG, OHIO 45030 TEL: 600-765-7878 FAX: 610-317-3613
MATERIAL: N/A PART NAME: ENCLOSED SCROLL FLOW SCHEMATIC DWG NO: MSEQ30B6		SIZE: D	