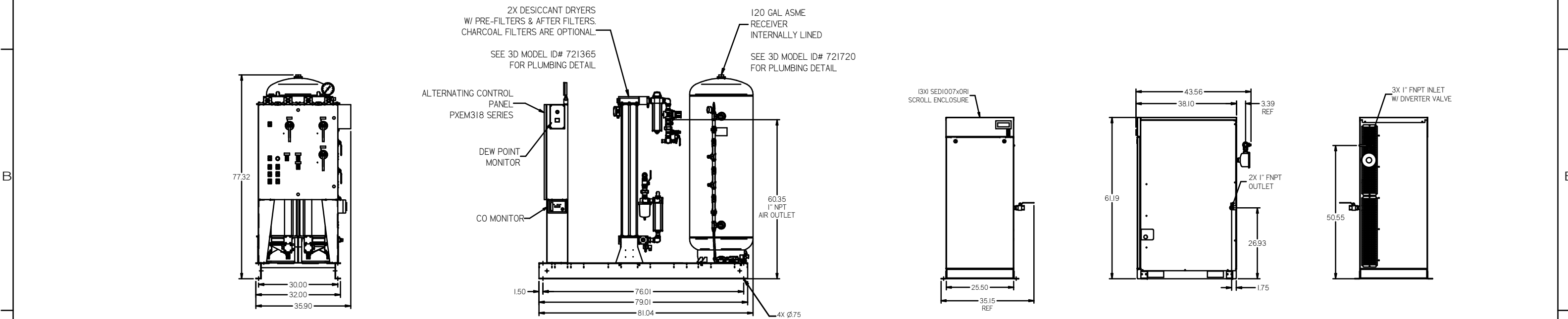
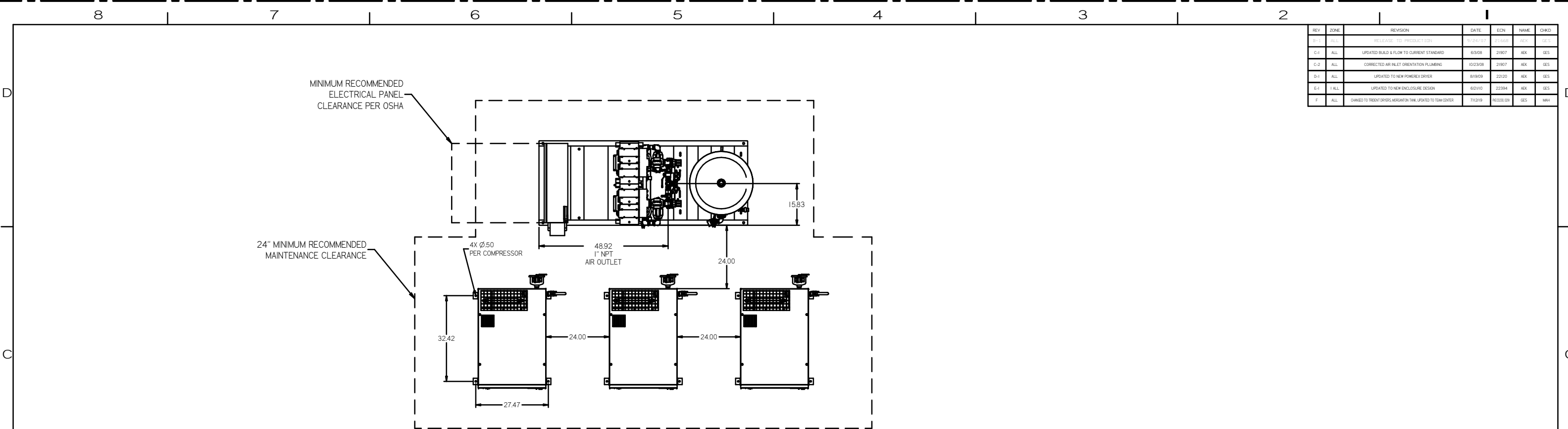


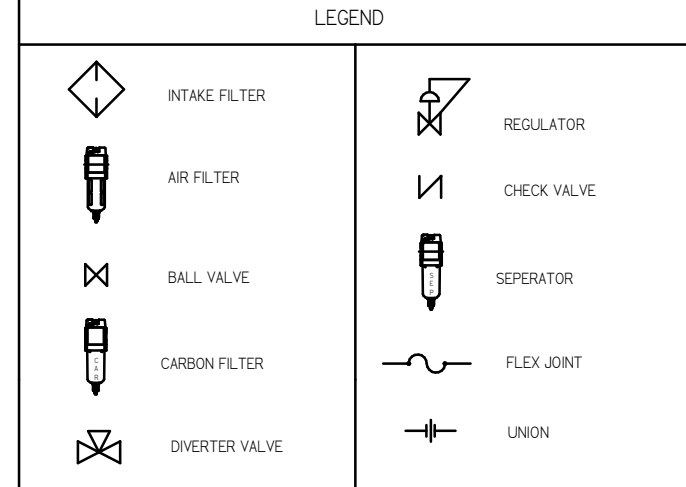
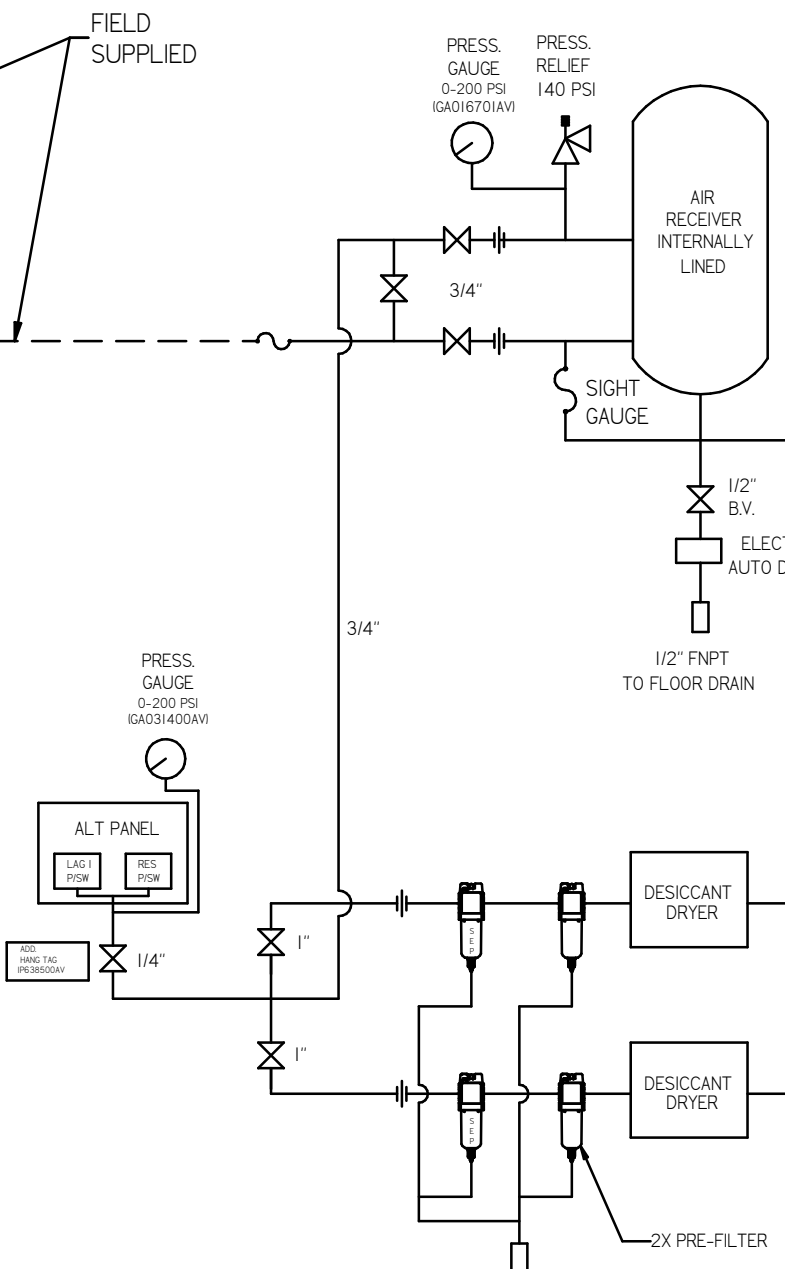
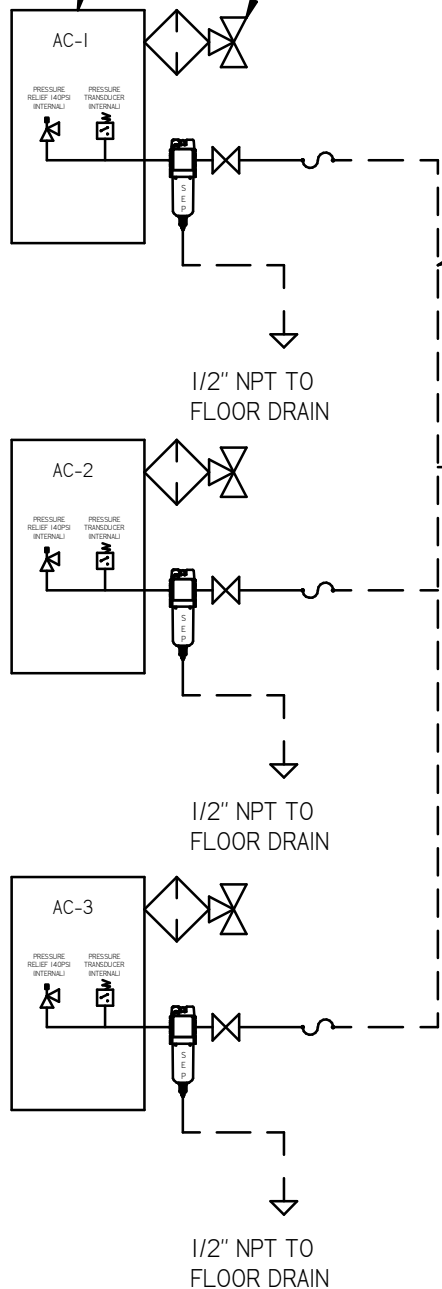
REV	ZONE	REVISION	DATE	ECN	NAME	CHKD
B-1	ALL	RELEASE TO PRODUCTION	09/24/07	251665	AEK	GES
C-1	ALL	UPDATED BUILD & FLOW TO CURRENT STANDARD	6/6/08	21907	AEK	GES
C-2	ALL	CORRECTED AIR INLET ORIENTATION PLUMBING	10/23/08	21907	AEK	GES
D-1	ALL	UPDATED TO NEW POWEREX DRYER	8/19/09	22320	AEK	GES
E-1	ALL	UPDATED TO NEW ENCLOSURE DESIGN	6/21/10	22394	AEK	GES
F	ALL	OWNED TO PREVENT OSHA INSPECTION TIME, UPDATED TO TANK COVER	7/22/19	76229.03	GES	MAH



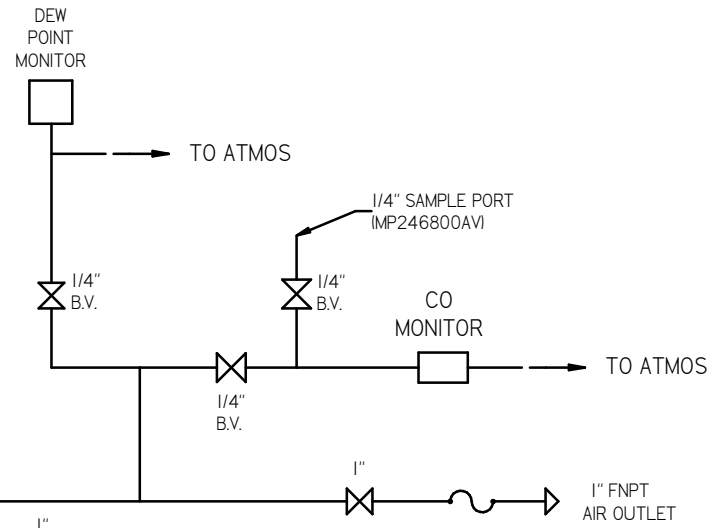
NOTES:
 1.) SHEET 1, UNIT LAYOUT.
 2.) SHEET 2, UNIT FLOW SCHEMATIC.
 3.) INLET CONNECTIONS: 1" FNPT X 3.
 4.) OUTLET CONNECTION: 1" FNPT X 1.
 5.) POWER CONNECTION: 1- 208, 230, OR 460 VOLT
 6.) WHEN PACKAGE IS INSTALLED INTO THE FACILITY, VERIFY THE INSTALLER REFERENCES TABLE 110.26 (A) (I) FOR MINIMUM WORKING AREA.

MINUS DRAFT PLUS DRAFT PLUS DRAFT DEGREE	ADDITIONAL CONTROL REG'D BRINELL HARDNESS	Drawings to conform to the current revision of the following ANSI standards: V14.2 Multi and sectional view dgs V14.30 Dimensions and tolerancing
TOLERANCES NOT SPECIFIED XX ± XXX ± \angle DEG ±	AUTOCAD REL2006.LT INCH	DO NOT SCALE DRAWING FOR DIMENSIONS Sheet 1 of 2 SCALE 1:18
CONFIDENTIAL DISCLOSURE This drawing is the property of the CAMPBELL GROUP of the SCOTT FETZER COMPANY and subject to return on demand. Its contents are confidential and must not be copied or submitted to outside parties for use or examination.	DRAWN BY AEK	CHECKED BY GES
MATERIAL N/A	DATE 9/24/07	DATE 9/24/07
PART NAME MEDICAL SCROLL 10HP TRIPLEX		
DWG NO MSET100	SIZE D	

(3X) SEDI007xORI ENLCOSED SCROLL
 3X 1" FNPT INLET W/ DIVERTER VALVE



REV	ZONE	REVISION	DATE	ECN	NAME	CHKD
B-1	ALL	RELEASE TO PRODUCTION	8/24/07	21665	AFK	GES
C-1	ALL	UPDATED BUILD & FLOW TO CURRENT STANDARD	6/3/08	21907	AFK	GES
C-2	ALL	CORRECTED AIR INLET ORIENTATION PLUMBING	10/23/08	21907	AFK	GES
D-1	ALL	UPDATED TO NEW POWERX DRIVER	8/19/09	22120	AFK	GES
E-1	1 ALL	UPDATED TO NEW ENCLOSURE DESIGN	6/2/10	22394	AFK	GES
F	ALL	CHANGED TO TREAT ORDER ARGUMENT TANK, UPDATED TO TANK ORDER	7/2/10	22320/20	AFK	MAY



- NOTES:
 1.) SHEET 1, UNIT LAYOUT.
 2.) SHEET 2, UNIT FLOW SCHEMATIC.
 3.) INLET CONNECTIONS: 1" FNPT X 3.
 4.) OUTLET CONNECTION: 1" FNPT X 1.
 5.) POWER CONNECTION: 1- 208, 230, OR 460 VOLT

DIMENSIONS NOT SPECIFIED XX = XXX = (REG.) =	AUTOCAD REL2008.LT INCH	ADDITIONAL CONTROL REQ'D BRINELL HARDNESS DO NOT SCALE DRAWING FOR DIMENSIONS Sheet 2 of 2 SCALE 1:18
CONFIDENTIAL DISCLOSURE This drawing is the property of the CAMPBELL SCROLL or the SCOTT FETZER COMPANY and subject to return on demand. Its contents are confidential and must not be copied or used in any way outside parties for whom or whomsoever.		DRAWN BY: AFK CHECKED BY: GES APPROVED BY: DMS DATE: 9/24/07
MATERIAL: N/A PART NAME: ENCLOSED SCROLL FLOW SCHEMATIC ENG NO: MSET100		 1000 Industrial Blvd., Suite 100 Ft. Worth, TX 76116 Ph: 888-769-7979 FAX: 817-367-3125