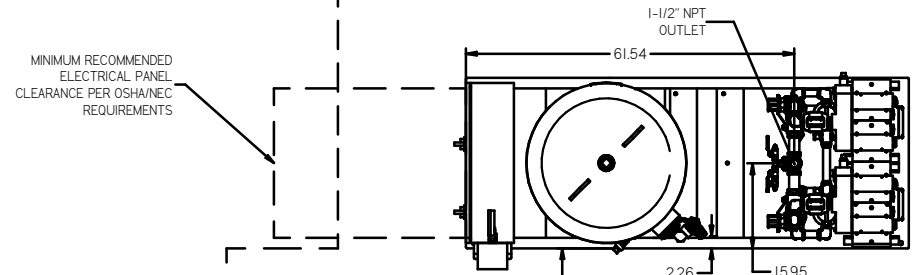
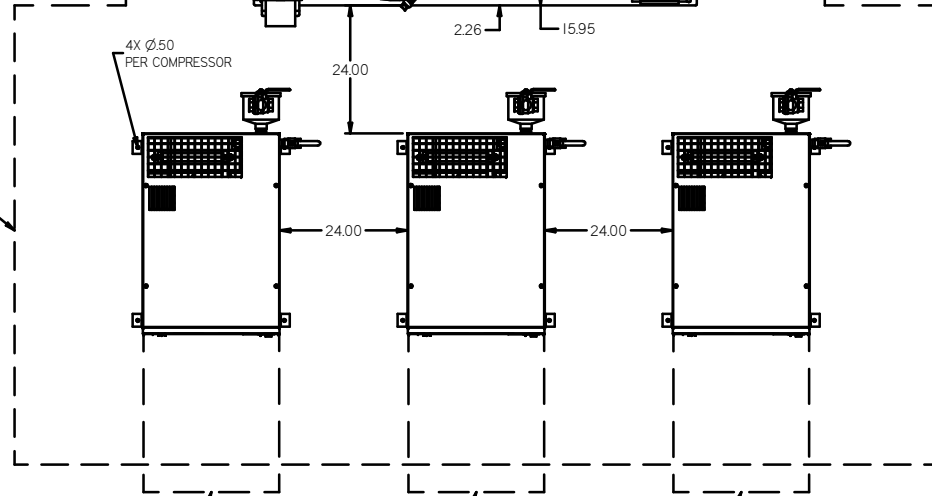


REV	ZONE	REVISION	DATE	ECN	NAME	CHKD
1	ALL	RELEASED TO PRODUCTION	9/28/07	21907	AEK	GES
C-1	ALL	UPDATED BUILD & FLOW TO CURRENT STANDARD	6/3/08	21907	AEK	GES
C-2	ALL	CORRECTED INLET PLUMBING & ORIENTATION	10/23/09	21907	AEK	GES
D-1	1 ALL	UPDATED TO NEW ENCLOSURE DESIGN	6/21/10	22394	AEK	GES
E-1	1 ALL	UPDATED DRYER OUTLET ORIENTATION	4/14/15	PREC200	MJD	GES
F	ALL	CHANGED TO TRIDENT DRYERS, MORGANTON TANK	5/6/19	PREC200	GES	MW



MINIMUM RECOMMENDED ELECTRICAL PANEL CLEARANCE PER OSHA/NEC REQUIREMENTS

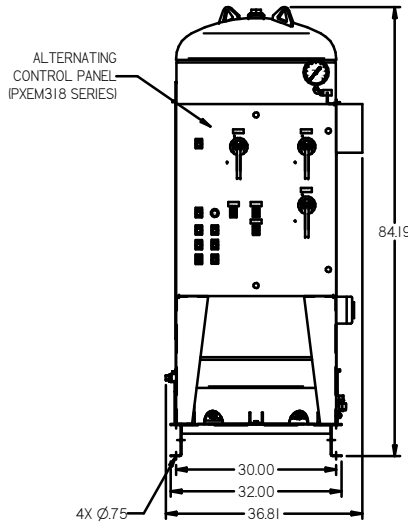
24" MINIMUM RECOMMENDED MAINTENANCE CLEARANCE



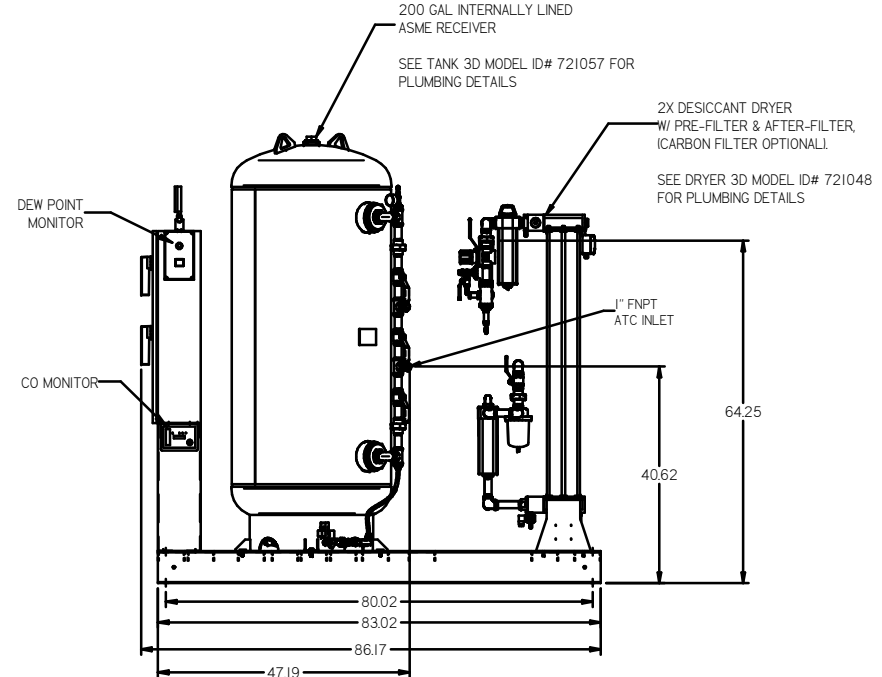
MINIMUM RECOMMENDED ELECTRICAL PANEL CLEARANCE PER OSHA/NEC REQUIREMENTS

MINIMUM RECOMMENDED ELECTRICAL PANEL CLEARANCE PER OSHA/NEC REQUIREMENTS

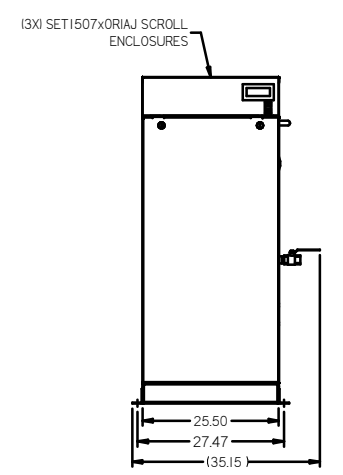
MINIMUM RECOMMENDED ELECTRICAL PANEL CLEARANCE PER OSHA/NEC REQUIREMENTS



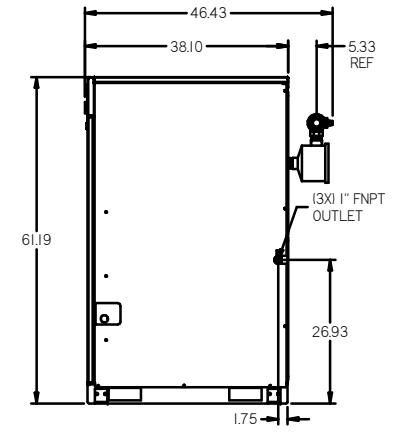
FRONT VIEW (TANK/DRYER SKID)



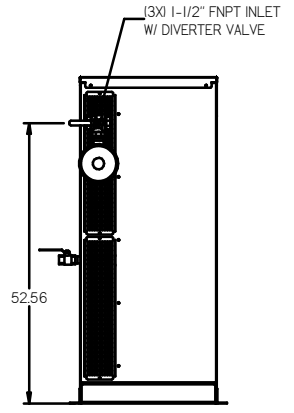
RIGHT VIEW (TANK/DRYER SKID)



FRONT VIEW (SCROLL ENCLOSURE)



RIGHT VIEW (SCROLL ENCLOSURE)



REAR VIEW (SCROLL ENCLOSURE)

- NOTES:
- 1) SHEET 1, UNIT LAYOUT.
 - 2) SHEET 2, UNIT FLOW SCHEMATIC.
 - 3) INLET CONNECTIONS: 1-1/2" FNPT X 3.
 - 4) OUTLET CONNECTION: 1-1/2" FNPT X 1.
 - 5) POWER CONNECTION: 1- 208, 230, OR 460 VOLT
 - 6) WHEN PACKAGE IS INSTALLED INTO THE FACILITY, VERIFY THE INSTALLER REFERENCES TABLE 110.26 (A) (I) FOR MINIMUM WORKING AREA.

<p>MINUS DRAFT</p> <p>PLUS DRAFT</p> <p>ADDITIONAL CONTROL REQ'D</p> <p>BRINELL HARDNESS</p>	<p>Drawings to conform to the current revision of the following ANSI standards:</p> <p>Y14.3 Multi and sectional view dsgs.</p> <p>Y14.5 Dimensioning and Tolerancing</p>
<p>TOLERANCES NOT SPECIFIED</p> <p>XX .5</p> <p>XXX .2</p> <p>2 (REG) .5</p>	<p>AUTOCAD</p> <p>REL2008 LT</p> <p>INCH</p>
<p>CONFIDENTIAL: This drawing is the property of POWEREX, INC. of the SCOTT FETZER COMPANY and subject to return on demand. Its contents are confidential and must not be copied or submitted to outside parties for use or examination.</p>	<p>DO NOT SCALE DRAWING FOR DIMENSIONS</p> <p>Sheet 1 of 2</p> <p>SCALE 1:18</p>
<p>DATE</p> <p>BY</p> <p>AEK</p> <p>9/28/07</p>	<p>CHECKED BY</p> <p>GES</p> <p>9/28/07</p>
<p>APPROVED BY</p> <p>DMS</p> <p>9/28/07</p>	<p>APPROVED BY</p> <p>DB</p> <p>9/28/07</p>
<p>MATERIAL</p> <p>N/A</p>	<p>POWEREX</p> <p>150 PRODUCTION DRIVE HARRISBURG, OHIO 45009</p> <p>PH: 508-763-7074 FAX: 513-323-2122</p>
<p>PART NAME</p> <p>MEDICAL SCROLL</p> <p>15HP TRIPLEX</p>	<p>SIZE</p> <p>D</p>

8

7

6

5

4

3

2

1

D

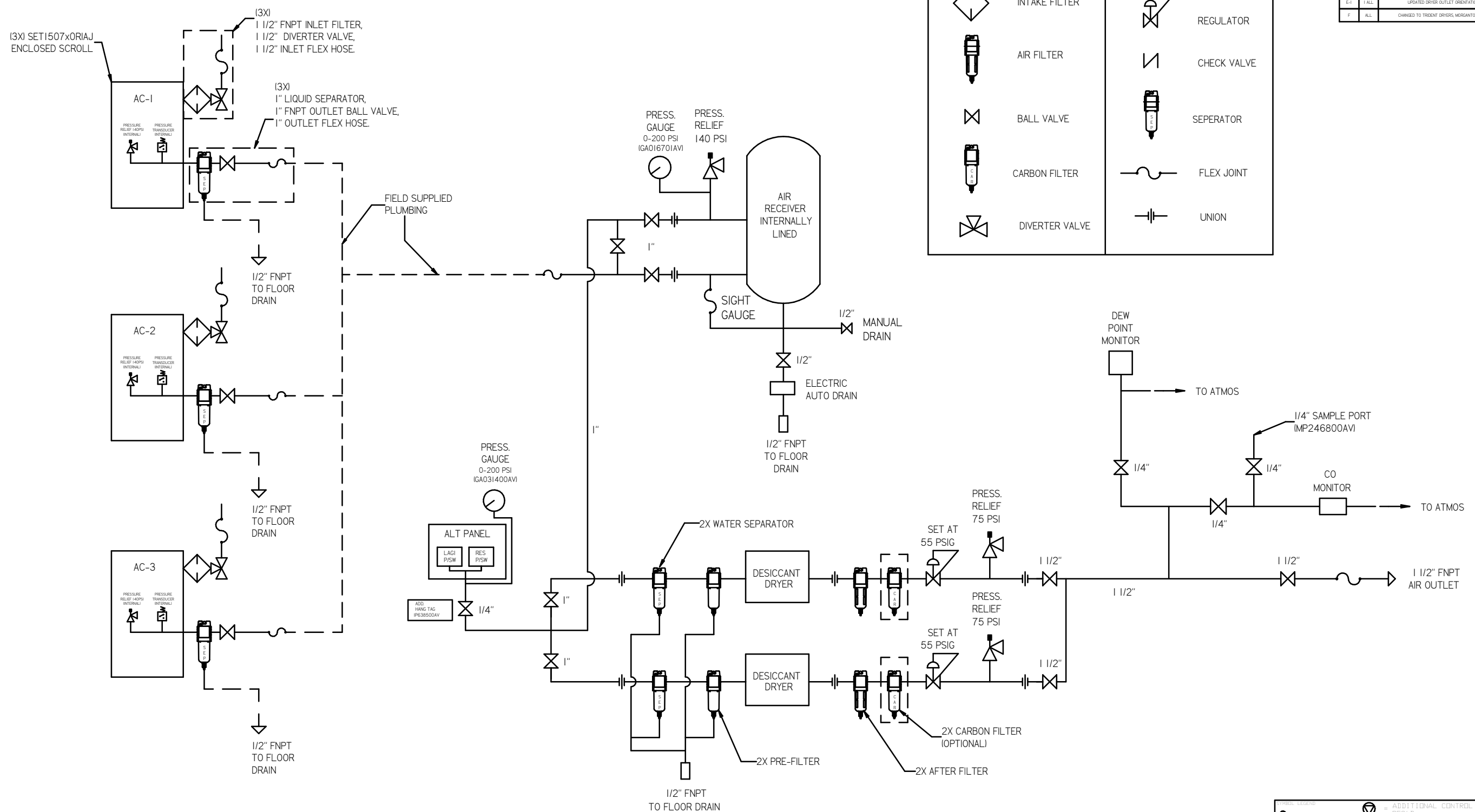
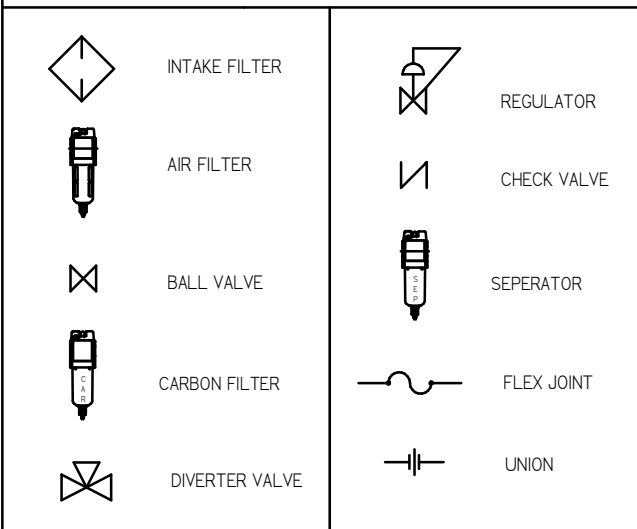
C

B

A

REV	ZONE	REVISION	DATE	ECN	NAME	CHKD
B-1	ALL	RELEASE TO PRODUCTION	9/28/07	21668	AEK	GES
C-1	ALL	UPDATED BUILD & FLOW TO CURRENT STANDARDS	9/30/08	21907	AEK	GES
C-2	ALL	CORRECTED INLET PLUMBING & ORIENTATION	10/23/08	21907	AEK	GES
D-1	1 ALL	UPDATED TO NEW ENCLOSURE DESIGN	6/20/10	22394	AEK	GES
E-1	1 ALL	UPDATED DRYER OUTLET ORIENTATION	4/1/15	PRE0100	MJD	GES
F	ALL	CHANGED TO TRENT DRYERS, MORGANTON TANK	5/16/19	PRE0229	GES	MHW

LEGEND



- NOTES:
 1.) SHEET 1, UNIT LAYOUT.
 2.) SHEET 2, UNIT FLOW SCHEMATIC.
 3.) INLET CONNECTIONS: 1-1/2" FNPT X 3.
 4.) OUTLET CONNECTION: 1-1/2" FNPT X 1.
 5.) POWER CONNECTION: 1- 208, 230, OR 460 VOLT

(⊖) = MINUS DRAFT (⊕) = PLUS DRAFT (⊗) = ADDITIONAL CONTROL (⊙) = BRINELL HARDNESS	AUTOCAD REL 2008 LT INCH	DO NOT SCALE DRAWING FOR DIMENSIONS Sheet 2 of 2 SCALE 1:18
TOLERANCES NOT SPECIFIED XX ± XXX ± < DEG > ±	CONFIDENTIAL ENCLOSURE This drawing is the property of POWEREX, Inc. of the SCOTT FETTER COMPANY and subject to return on demand. Its contents are confidential and must not be copied or submitted to outside parties for use or examination.	DRAWN BY: AEK CHECKED BY: GES 9/28/07
MATERIAL: N/A PART NAME: ENCLOSED SCROLL FLOW SCHEMATIC		DMS: DMS DB: DB 9/28/07 9/28/07 9/28/07 9/28/07
DWG NO: MSET150	SIZE: D	138 HOBBS RD. STE. 1000, MORGANTON, NC 27056 PH: 888-764-7979 FAX: (313) 363-3125

8

7

6

5

4

3

2

1

mset150.dwg