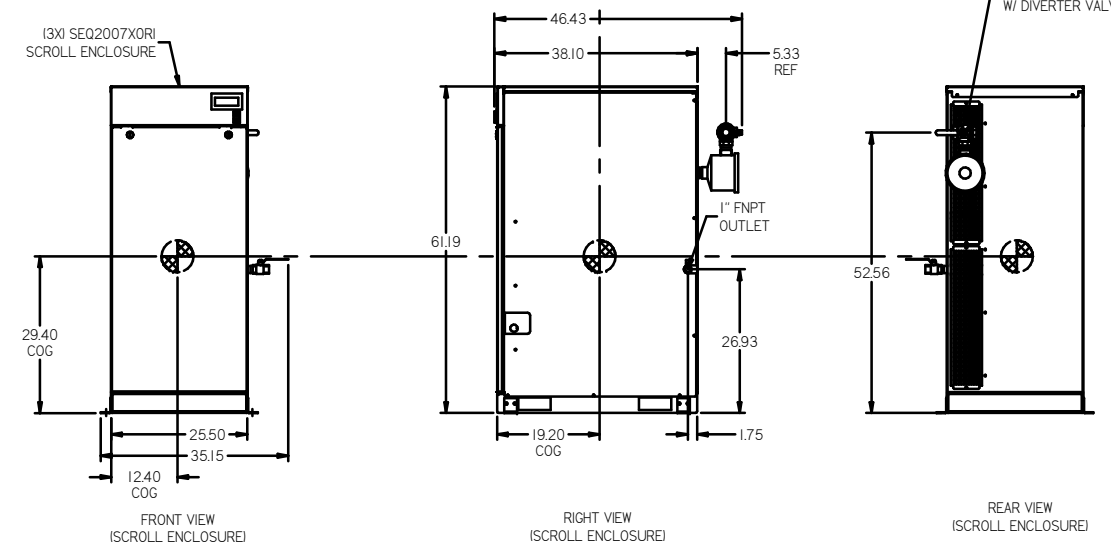
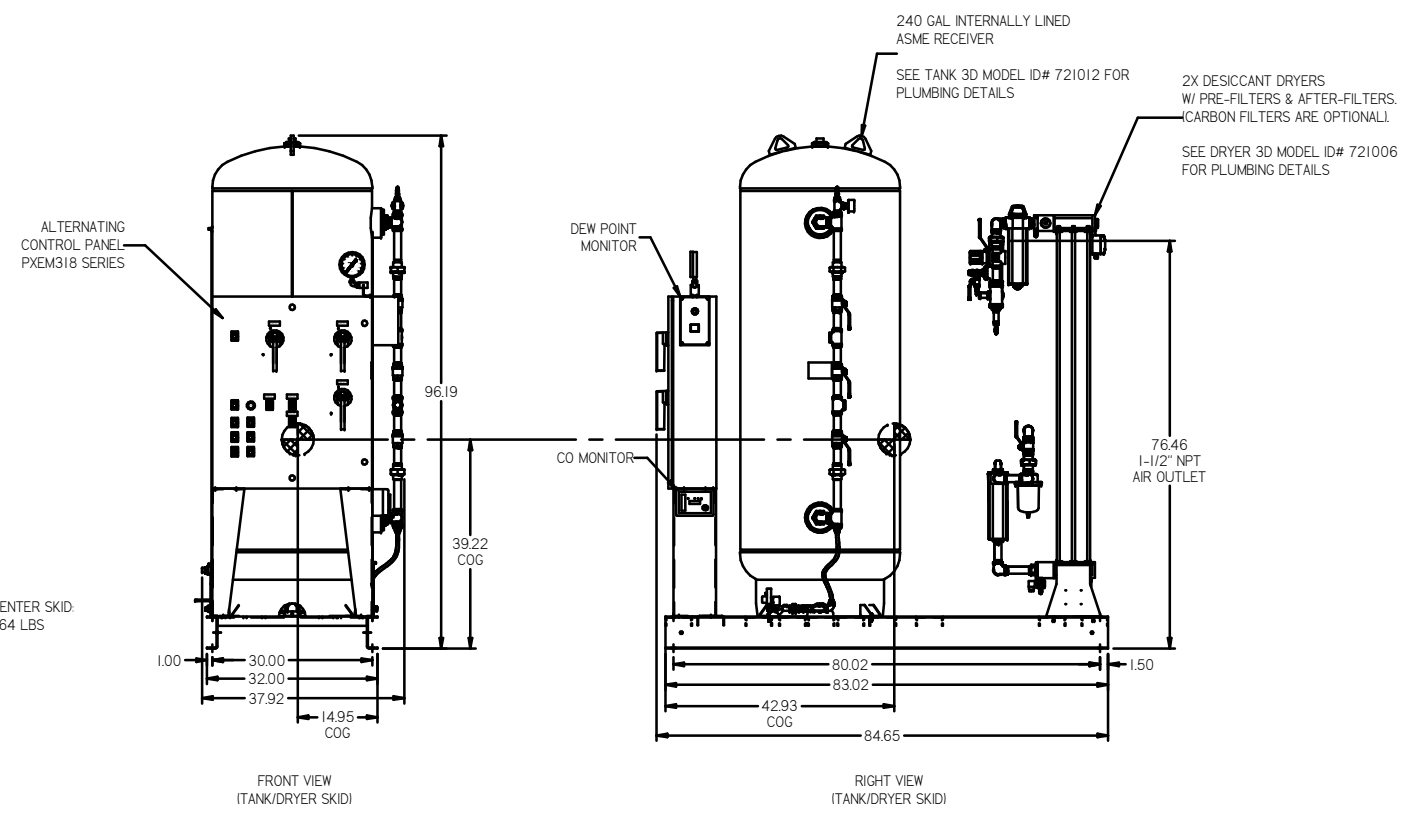
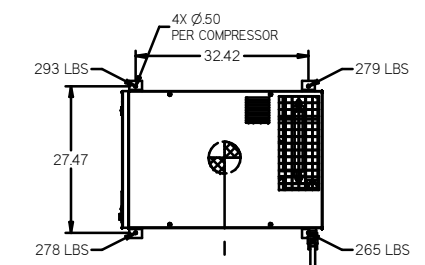
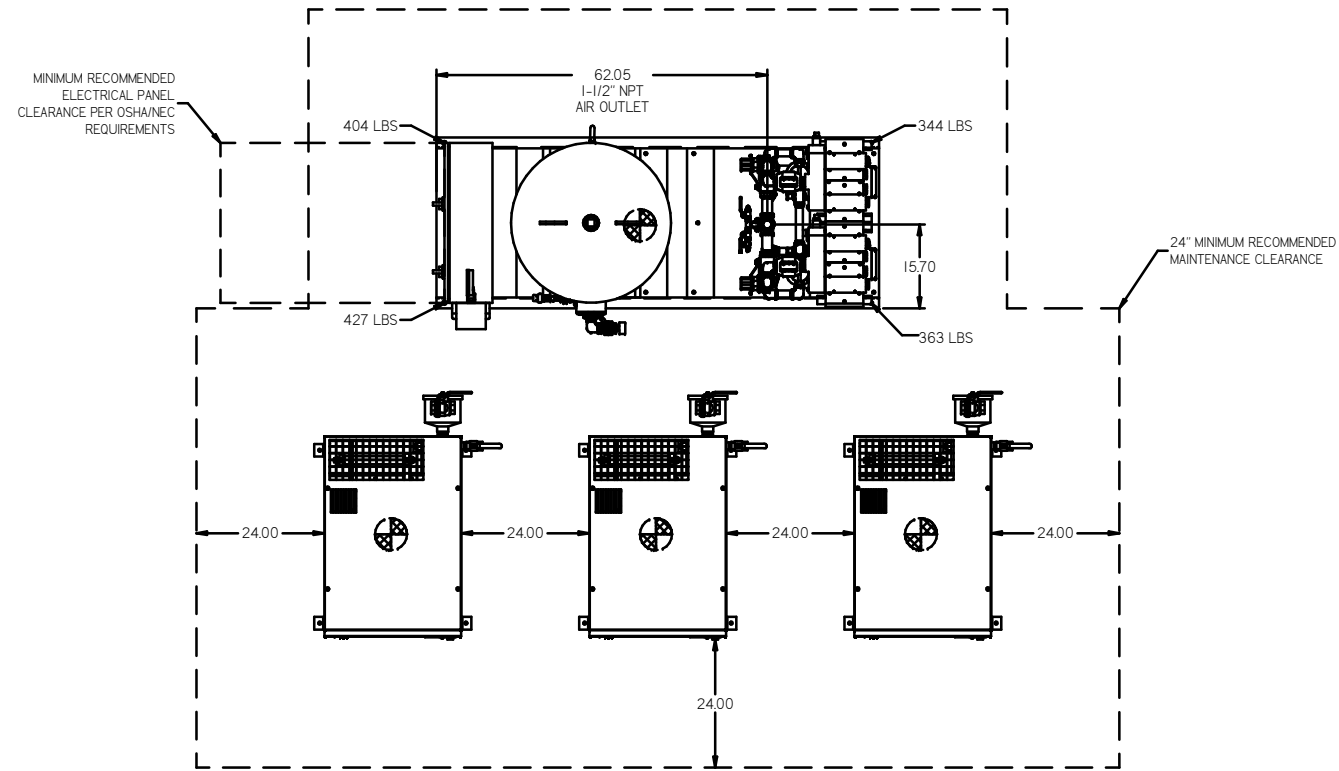


REV	ZONE	REVISION	DATE	ECN	NAME	CHKD
B-1	ALL	RELEASE TO PRODUCTION	10/1/07		AEK	GES
C-1	ALL	UPDATED BUILD & FLOW TO CURRENT STANDARD	6/3/08		AEK	GES
C-2	ALL	CORRECTED INLET PLUMBING & ORIENTATION	10/23/08		AEK	GES
C-3	ALL	ADDED SHEET 3	12/5/08		AEK	GES
D-1	ALL	UPDATED TO NEW ENCLOSURE DESIGN	6/21/10		AEK	GES
E-1	ALL	CHANGED ATC SKID COMPLY FOR BETTER SERVICEABILITY	6/24/10		AEK	GES
F-1	1 BS	ADDED FILTER CALL-OUTS TO DRYER CALL-OUT	8/18/11		AEK	GES
G-1	1 ALL 2 DS 1 BE-47	ADDED CENTER OF GRAVITY INFO ADDED PRESSURE SWITCHES MOVED CO MONITOR TO CONTROL PANEL FEET	6/2/14		PRECD087	AEK GES
H-1	1 ALL	UPDATED TO HINO DRIVERS	8/10/17		PRECD174	AEK GES
J	ALL	CHANGED TO TRIDENT DRYERS, MORGANTON TANK, UPDATED TO TC	7/25/19		PRECD3039	GES MMH



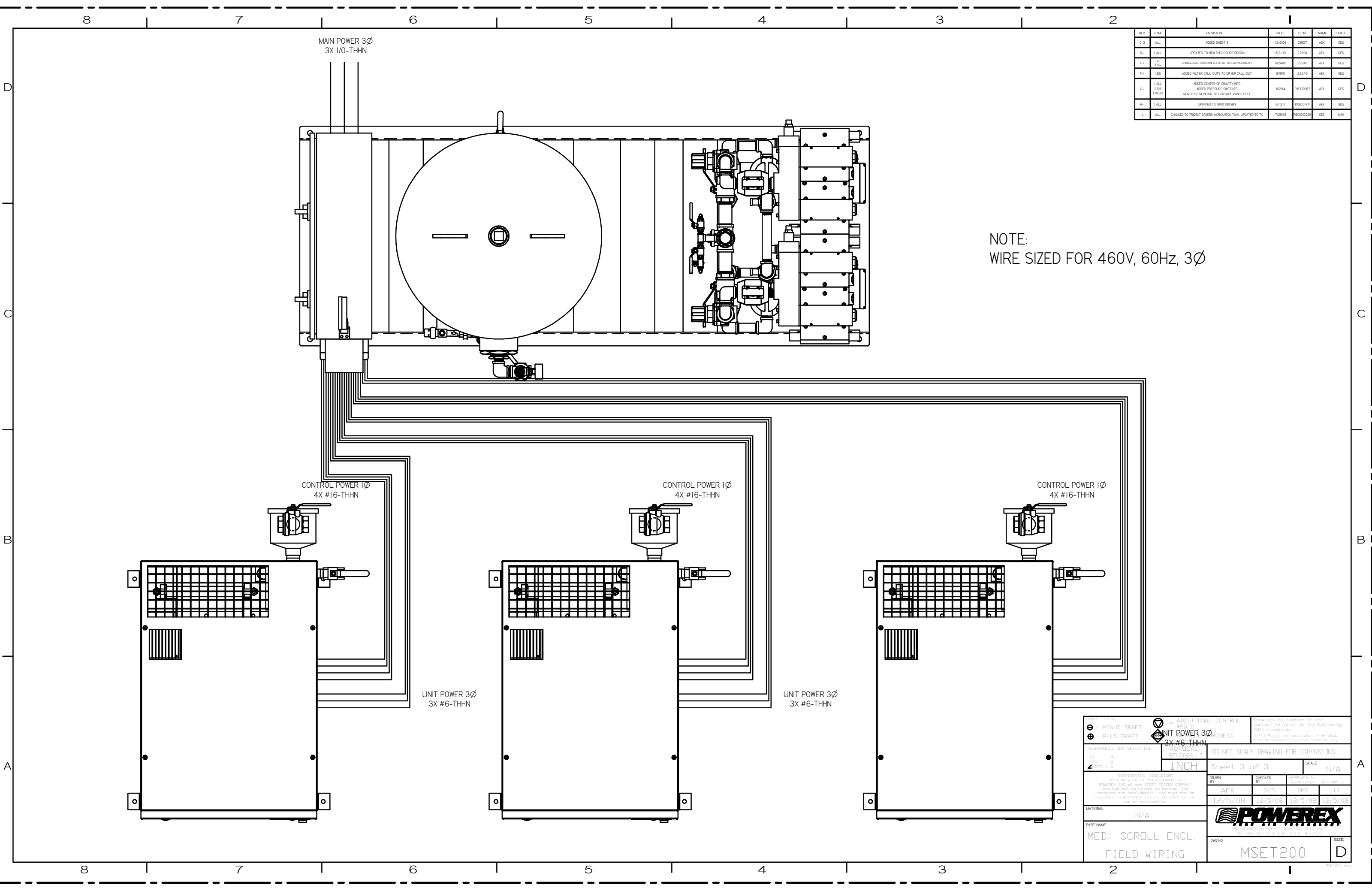
SEQ2007 SCROLL ENCLOSURE
TOTAL WEIGHT: 1115 LBS
C.O.G. DIMENSIONS
X (FRONT): 12.40"
Y (RIGHT): 19.20"
Z (HEIGHT): 29.4"

AIR TREATMENT CENTER SKID
TOTAL WEIGHT: 1764 LBS
C.O.G. DIMENSIONS
X (FRONT): 14.95"
Y (RIGHT): 42.93"
Z (HEIGHT): 39.22"

- NOTES
- 1) SHEET 1, UNIT LAYOUT.
 - 2) SHEET 2, UNIT FLOW SCHEMATIC.
 - 3) INLET CONNECTIONS 1-1/2" FNPT X 3.
 - 4) OUTLET CONNECTION 1-1/2" FNPT X 1.
 - 5) POWER CONNECTION: 1- 208, 230, OR 460 VOLT
 - 6) WHEN PACKAGE IS INSTALLED INTO THE FACILITY, VERIFY THE INSTALLER REFERENCES TABLE 110.26 (A) (I) FOR MINIMUM WORKING AREA.

SYMBOL LEGEND ⊖ = MINUS DRAFT ⊕ = PLUS DRAFT ⊗ = ADDITIONAL CONTROL REQ'D ⊕ = BRINELL HARDNESS	TOLERANCES NOT SPECIFIED XX ± YY ± ZZ (NEG.) ±	AUTOCAD REL2008 LT INCH	DO NOT SCALE DRAWING FOR DIMENSIONS Sheet 1 of 3 SCALE 1:18
MATERIAL: N/A		PART NAME: MEDICAL SCROLL 20HP TRIPLEX	
DRAWN BY: AEK 10/1/07		CHECKED BY: GES 10/1/07	
APPROVED BY: DMS 10/1/07		APPROVED BY: DB 10/1/07	
DWG NO: MSET200		SIZE: D	





REV	ZONE	REVISION	DATE	ECN	NAME	CHKD
C-3	ALL	ADDED SHEET 3	12/5/08	21907	AEK	GES
D-1	1 ALL	UPDATED TO NEW ENCLOSURE DESIGN	6/21/10	22394	AEK	GES
E-1	1 ALL	CHANGED ATTACHMENTS FOR BETTER SERVICEABILITY	6/24/10	22340	AEK	GES
F-1	1 BS	ADDED FILTER CALL-OUTS TO DRYER CALL-OUT	8/19/11	22548	AEK	GES
G-1	1 ALL	ADDED CENTER OF GRAVITY INFO	6/2/14	PXC0067	AEK	GES
G-1	2 DS (16-87)	ADDED PRESSURE SWITCHES MOVED CO MONITOR TO CONTROL PANEL FEET				
H-1	1 ALL	UPDATED TO WIND DRIVERS	8/10/17	PXC0174	AEK	GES
J	ALL	CHANGED TO TREAT DRYERS, MORGANTON TANK, UPDATED TO TC	7/25/18	RE323029	GES	MWH

NOTE:
WIRE SIZED FOR 460V, 60Hz, 3Ø

TYPICAL LEGEND: ⊖ MINUS DRAFT ⊕ PLUS DRAFT AUTOCAD REL:2008 LT INCH DO NOT SCALE DRAWING FOR DIMENSIONS Sheet 3 of 3 SCALE N/A THIS DRAWING IS THE PROPERTY OF POWEREX, INC. OF THE SCOTT FETZER COMPANY and is subject to return on demand. Its contents are confidential and must not be copied or submitted to outside parties for use or examination.	= ADDITIONAL CONTROL REG. D UNIT POWER 3Ø 3X #6 THHN HARDNESS DO NOT SCALE DRAWING FOR DIMENSIONS SCALE N/A	Drawings to conform to the current revision of the following ANSI standards: 11.4.3 Multi and sectional view steps 11.6.5 Dimensioning and tolerancing
MATERIAL N/A	PART NAME MED. SCROLL ENCL. FIELD WIRING	DWG NO MSET200
DATE 12/5/08	CHECKED BY AEK	APPROVED BY GES 12/5/08
DATE 12/5/08	CHECKED BY DMS	APPROVED BY JJ 12/5/08
SIZE D		

8 7 6 5 4 3 2

(3X) SEQ2007X0R1
SCROLL ENCLOSURE

(3X) 1-1/2" FNPT AIR INLET
W/ 1/2" DIVERTER VALVE

FIELD
SUPPLIED
PIPING

PRESS.
GAUGE
0-200 PSI
(GA016701AV)

PRESS.
RELIEF
140 PSI



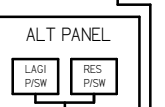
SIGHT
GAUGE

1/2" MANUAL
DRAIN

ELECTRIC
AUTO DRAIN

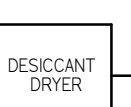
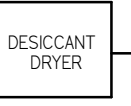
1/2" FNPT
TO FLOOR
DRAIN

PRESS.
GAUGE
0-200 PSI
(GA031400AV)



ADD.
HANG TAG
(P23850AV)

2X WATER SEPARATOR



1/2" FNPT
TO FLOOR
DRAIN

2X PRE-FILTER

2X CARBON FILTER
(OPTIONAL)

2X AFTER FILTER

PRESS.
RELIEF
75 PSI

SET AT
55 PSIG

PRESS.
RELIEF
75 PSI

SET AT
55 PSIG

DEW POINT
MONITOR

TO ATMOS

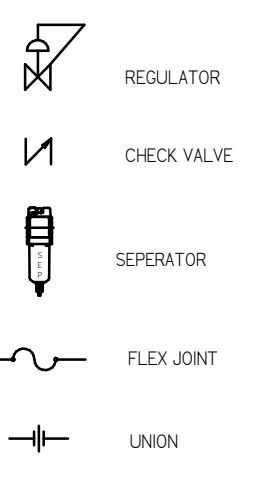
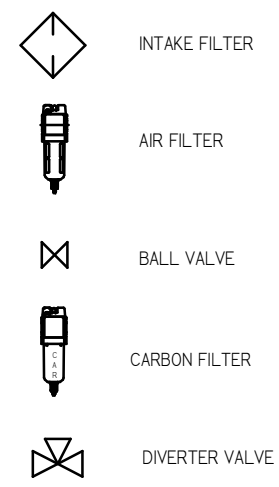
1/4" SAMPLE PORT
(MP246800AV)

CO
MONITOR

TO ATMOS

1 1/2" FNPT
AIR OUTLET

LEGEND



REV	ZONE	REVISION	DATE	ECN	NAME	CHKD
B-1	ALL	RELEASE TO PRODUCTION	11/1/07	21668	AEK	GES
C-1	ALL	UPDATED BUILD & FLOW TO CURRENT STANDARD	6/26/08	21907	AEK	GES
C-2	ALL	CORRECTED INLET PLUMBING & ORIENTATION	10/23/08	21907	AEK	GES
C-3	ALL	ADDED SHEET 3	12/5/08	21907	AEK	GES
D-1	1 ALL	UPDATED TO NEW ENCLOSURE DESIGN	6/20/10	22394	AEK	GES
E-1	1 ALL	CHANGED ARC AND CONFG FOR BETTER SERVICEABILITY	8/24/10	22348	AEK	GES
F-1	1 BS	ADDED FILTER CALL-OUTS TO DRYER CALL-OUT	8/19/11	22548	AEK	GES
G-1	1 ALL	ADDED CENTER OF GRAVITY INFO ADDED PRESSURE SWITCHES MOVED CO MONITOR TO CONTROL PANEL FEET	6/2/14	PRECD0067	AEK	GES
H-1	1 ALL	UPDATED TO NANO DRYERS	8/10/17	PRECD0174	AEK	GES
I	ALL	CHANGED TO TROSEN DRYERS, MORGANTON TANK, UPDATED TO TC	7/25/19	PRECD3320	GES	MMH

- NOTES:
 1) SHEET 1, UNIT LAYOUT.
 2) SHEET 2, UNIT FLOW SCHEMATIC.
 3) INLET CONNECTIONS: 1-1/2" FNPT X 3.
 4) OUTLET CONNECTION: 1-1/2" FNPT X 1.
 5) POWER CONNECTION: 1- 208, 230, OR 460 VOLT

MINUS DRAFT PLUS DRAFT	ADDITIONAL CONTROL REQ'D	Drawings to conform to the following ANSI standards: 1st 3rd angle and section 1 view depth 14.50 Dimensioning and tolerancing
TOLERANCES NOT SPECIFIED XX ± XXX ± .XX ±	AUTOCAD REL2008 LT INCH	DO NOT SCALE DRAWING FOR DIMENSIONS Sheet 2 of 3 SCALE 1:18
CONFIDENTIAL DISCLOSURE This drawing is the property of POWEREX, INC. of the SCOTT FEZTER COMPANY and subject to return on demand. Its contents are confidential and must not be copied or submitted to outside parties for use or reproduction.	DRAWN BY AEK	CHECKED BY GES
MATERIAL N/A	PART NAME ENCLOSED SCROLL FLOW SCHEMATIC	APPROVED BY DMS DB 10/1/07 10/1/07 10/1/07 10/1/07 DWG NO MSET200 SIZE D

8 7 6 5 4 3 2