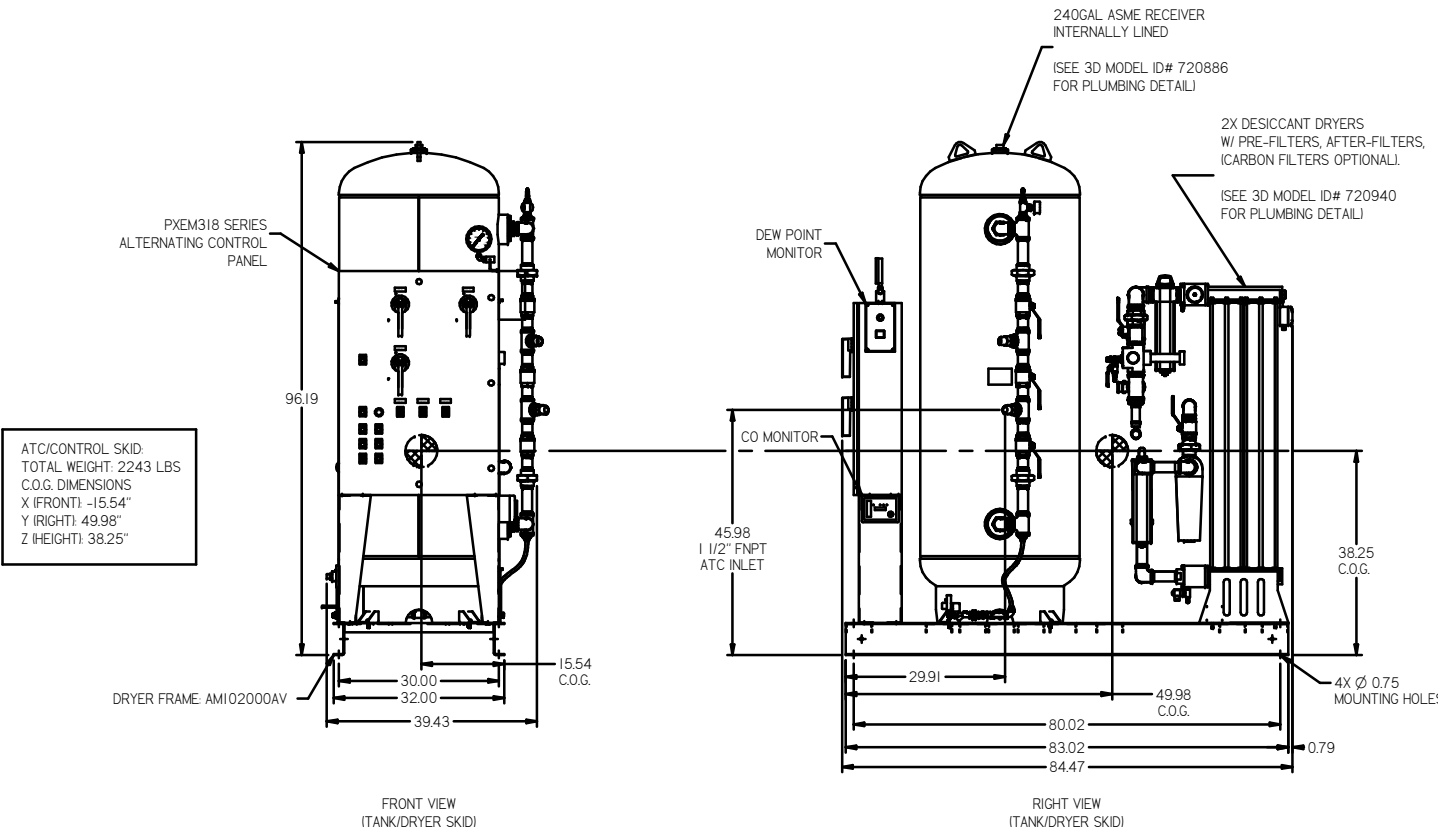
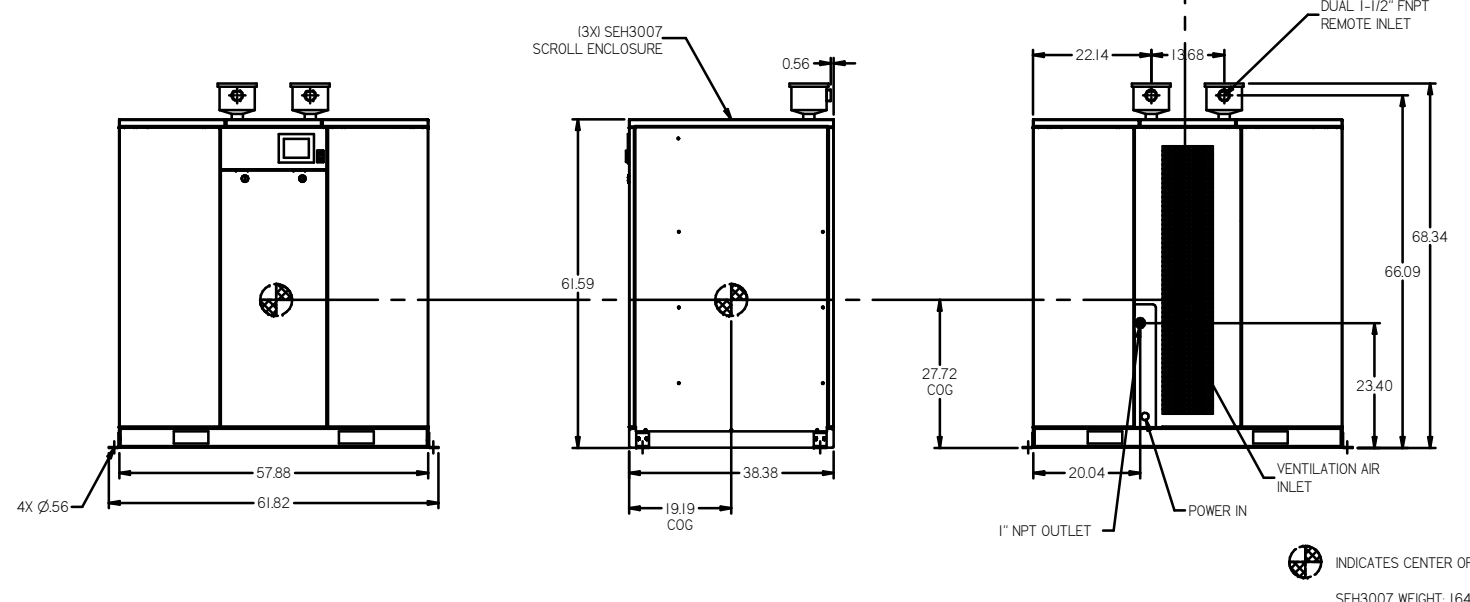
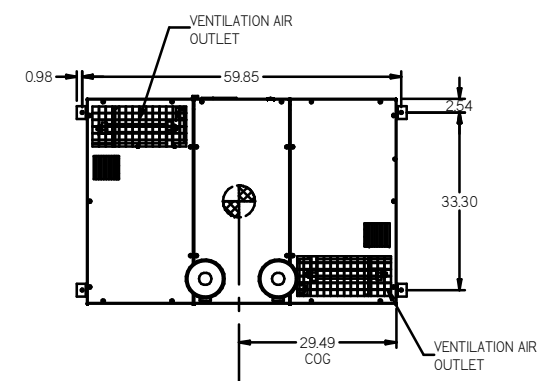
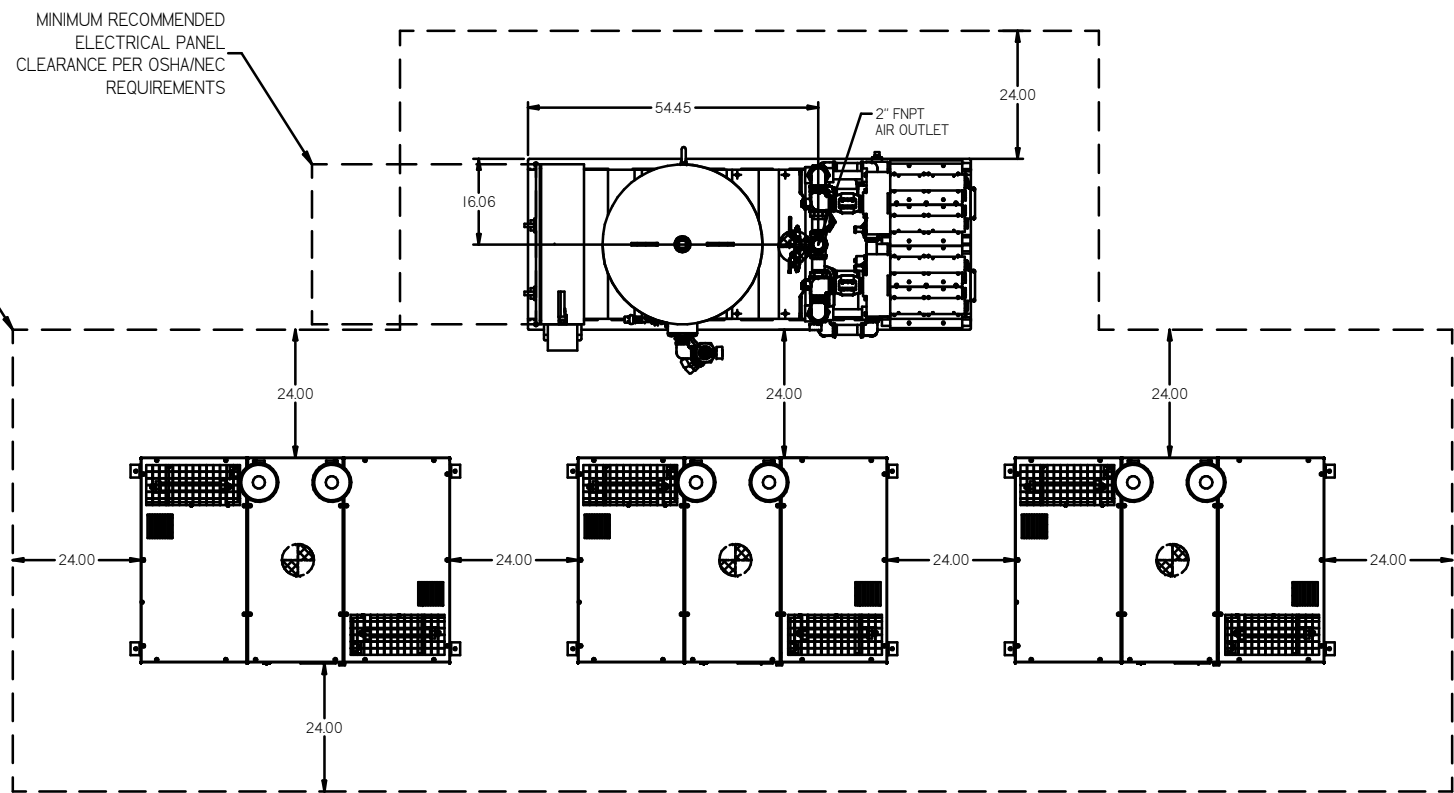


REV	ZONE	REVISION	DATE	ECN	NAME	CHKD
B	ALL	RELEASED FOR PRODUCTION	01/11/07	21908	AEK	GES
C-1	ALL	UPDATED BUILD & FLOW TO CURRENT STANDARD	6/3/08	21907	AEK	GES
C-2	ALL	CORRECTED PLEET DETAILS	9/25/08	21907	AEK	GES
D-1	ALL	UPDATED PANEL & MONITORS	5/20/10	22348	AEK	GES
D-2	2ND DT	ADDED DRIP LEGS	6/9/10	22348	AEK	GES
D-3	1 ALL	CHANGED ATC SKID COVER FOR BETTER SERVICEABILITY	6/24/10	22348	AEK	GES
D-4	1 ALL	ADDED COG INFO	12/7/10	22348	AEK	GES
E-1	ALL	UPDATED TO POWEREX SKID ENCLOSURE	5/31/11	22394	AEK	GES
F-1	1 BS	ADDED FILTER CALL-OUTS TO DRYER CALL-OUT	8/18/11	22546	AEK	GES
G-1	ALL	UPDATED TO CURRENT MASTER CONTROL PANEL	9/4/13	PREC0030	AEK	GES
H-1	1 ALL	UPDATED TO NANO DRYERS	8/10/17	PREC0074	AEK	GES
J	ALL	CHANGED TO TROJENT DRYERS	5/9/19	PREC0029	GES	MH

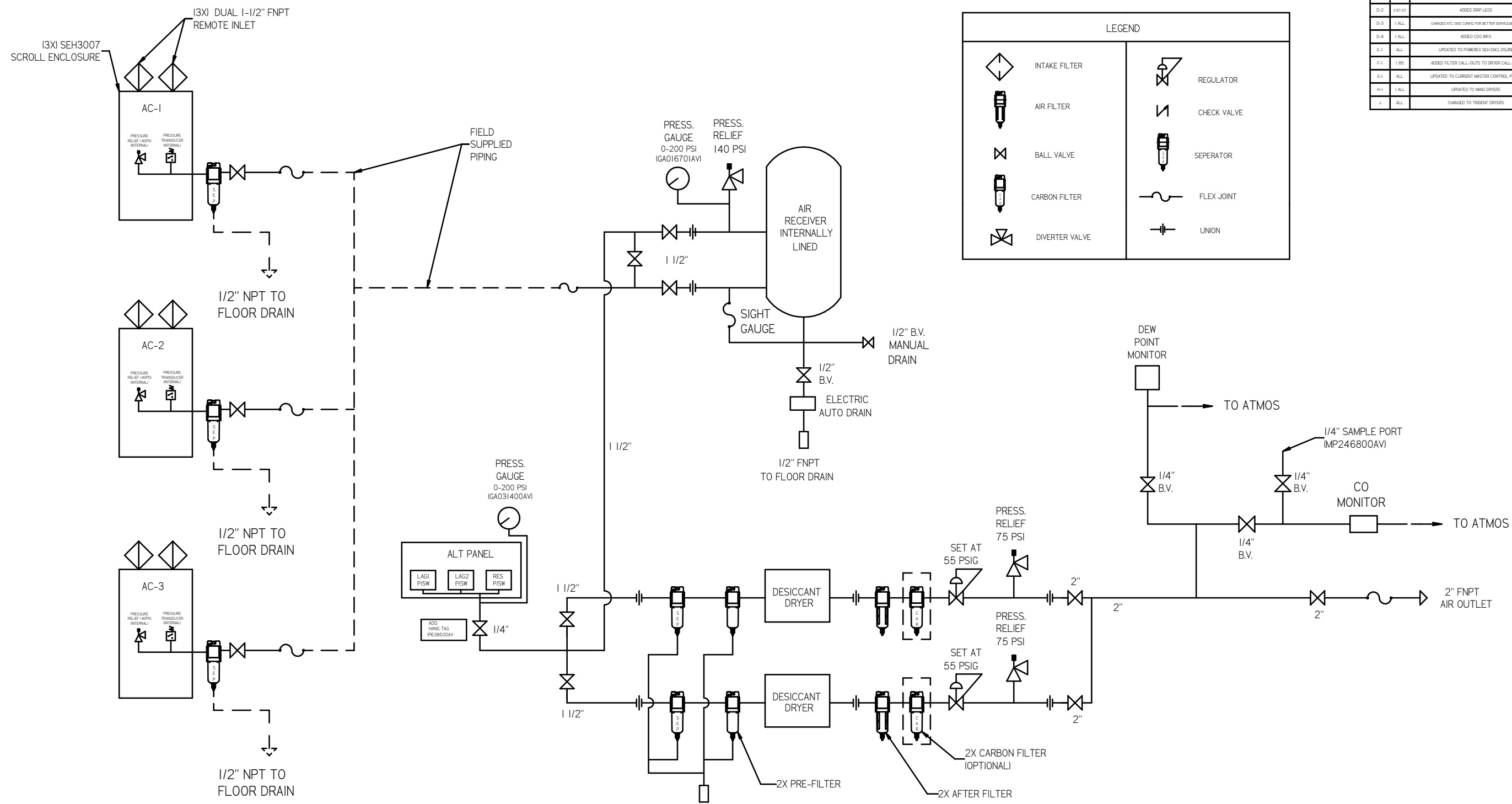
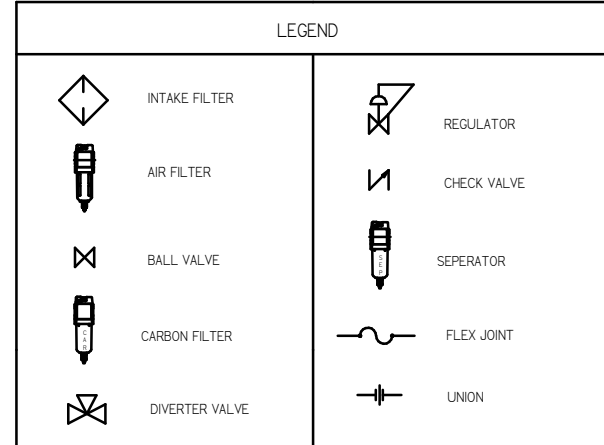


ATC/CONTROL SKID:
TOTAL WEIGHT: 2243 LBS
C.O.G. DIMENSIONS
X (FRONT): 15.54"
Y (RIGHT): 49.98"
Z (HEIGHT): 38.25"

- NOTES:
 1) SHEET 1, UNIT LAYOUT.
 2) SHEET 2, UNIT FLOW SCHEMATIC.
 3) INLET CONNECTIONS: 1-1/2" FNPT X 1.
 4) OUTLET CONNECTION: 2" FNPT X 1.
 5) POWER CONNECTION: 1- 208, 230, OR 460 VOLT.
 6) WHEN PACKAGE IS INSTALLED INTO THE FACILITY, MAKE SURE THAT THE INSTALLER REFERENCES TABLE 110.26 (A) (I) FOR MINIMUM WORKING AREA.

SYMBOL LEGEND ⊖ = MINUS DRAFT ⊕ = PLUS DRAFT ⊗ = ADDITIONAL CONTROL REQ'D ⊘ = BRINELL HARDNESS		Drawings to conform to the current revision of the following ANSI standards: Y14.3 Multi and sectional view dgs. Y14.99 Dimensioning and tolerancing
TOLERANCES NOT SPECIFIED XX ± YYY ± Z (DEC.) ±	AUTOCAD REL2008 L1 INCH	DO NOT SCALE DRAWING FOR DIMENSIONS Sheet 1 of 2 SCALE 1:18
CONFIDENTIAL DISCLOSURE: This drawing is the property of the CAMPBELL GROUP of the SCOTT FETZER COMPANY and subject to return on demand. Its contents are confidential and must not be copied or submitted for outside parties for use or examination.		
MATERIAL N/A	DRAWN BY AEK	CHECKED BY GES APPROVED BY DMS DB
PART NAME MEDICAL SCROLL 30HP TRIPLEX	DWG NO MSET300	DATE 10/1/07 10/1/07 10/1/07 10/1/07
POWEREX 150 PRODUCTION DRIVE, HARRISBURG, OHIO 45007 PH: 800-729-7973 FAX: (614) 367-2100		SIZE D

REV	ZONE	REVISION	DATE	ECN	NAME	CHKD
B-1	ALL	RELEASE TO PRODUCTION	05/11/07	11660	AEK	GES
C-1	ALL	UPDATED BUILD & FLOW TO CURRENT STANDARD	01/08	21807	AEK	GES
C-2	ALL	CORRECTED INLET DETAILS	02/26/08	21807	AEK	GES
D-1	ALL	UPDATED PANEL & MONITORS	02/01/10	22348	AEK	GES
D-2	2/3/10	ADDED DRIP LEES	03/10	22348	AEK	GES
D-3	1/1/11	CHANGED ATC S&B CONFIG FOR BETTER SERVICEABILITY	02/24/10	22348	AEK	GES
D-4	1/1/11	ADDED COG INFO	12/7/10	22348	AEK	GES
E-1	ALL	UPDATED TO POWEREX SEH ENCLOSURE	03/01/11	22394	AEK	GES
F-1	1/8/11	ADDED FILTER CALL-OUTS TO DRYER CALL-OUT	01/08/11	22546	AEK	GES
G-1	ALL	UPDATED TO CURRENT MASTER CONTROL PANEL	04/13	PREC0030	AEK	GES
H-1	1/1/11	UPDATED TO MAND DRIVERS	01/01/11	PREC0174	AEK	GES
J	ALL	CHANGED TO TRIDENT DRIVERS	03/09	PREC0209	GES	MMH



- NOTES:**
- 1.) SHEET 1, UNIT LAYOUT.
 - 2.) SHEET 2, UNIT FLOW SCHEMATIC.
 - 3.) INLET CONNECTIONS: 1-1/2" FNPT X 6.
 - 4.) OUTLET CONNECTION: 2" FNPT X 1.
 - 5.) POWER CONNECTION: 1- 208, 230, OR 460 VOLT.

TOLERANCES NOT SPECIFIED XX ± XXX ± 4 DEC 1.3	AUTOCAD REL2008 LT INCH	DO NOT SCALE DRAWING FOR DIMENSIONS Sheet 2 of 2 SCALE 1:18
CONFIDENTIAL DISCLOSURE This drawing is the property of the CAMPBELL GROUP of the SCOTT FETZER COMPANY and subject to return on demand. Its contents are confidential and must not be copied or submitted to outside parties for use or examination.	DRAWN BY: AEK CHECKED BY: GES 10/1/07	DESIGNED BY: DMS 10/1/07 10/1/07 10/1/07
MATERIAL: N/A PART NAME: ENCLOSED SCROLL FLOW SCHEMATIC DWG NO: MSET300 SIZE: D	 POWEREX THE SCOTT FETZER COMPANY 10000 W. 10TH AVENUE, SUITE 100 DENVER, CO 80202	