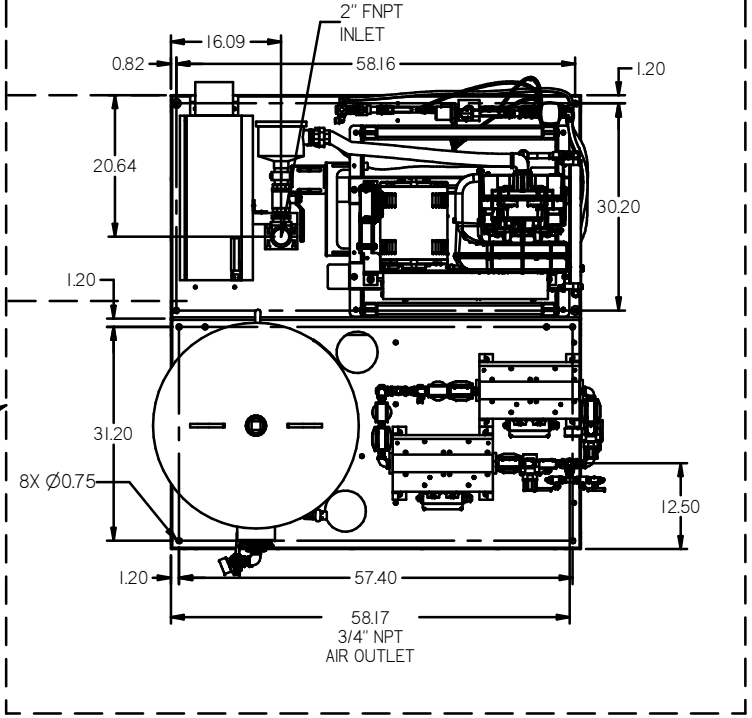


REV	ZONE	REVISION	DATE	ECN	NAME	CHKD
01	ALL	RELEASE TO PRODUCTION	5/20/14	PREC0067	GES	JEK
C-1	ALL	CORRECTED UNIT NPT OUTLET SIZE TO 3/4"	11/17/14	PREC0067	GES	AEK
D-1	ALL	MAVEI REDESIGN SMALLER FOOTPRINT	02/25/15	PREC0067	JBE	ADK
E-1	2 ALL 2 ALL 1 ALL	CORRECTED SEPARATOR DRAIN LINES TO 1/4" ADDED NOTE TO REMOVE SEPARATOR FLOAT ADDED OUTLINE FOR RECOMMENDED CLEARANCES UPDATED INLET TREE	01/05/16	PREC0167	MJD	GES
F	ALL	CHANGED TO TREAT ORDER MORGANTOWN, UPDATED TO TEAM CENTER	01/14/19	PREC03009	GES	MAH

MINIMUM RECOMMENDED ELECTRICAL PANEL CLEARANCE PER OSHA/NEC REQUIREMENTS

24" MINIMUM RECOMMENDED MAINTENANCE CLEARANCE



BASIC CONTROL PANEL PSM313 SERIES

2X DESICCANT DRYERS W/ PRE-FILTERS & AFTER-FILTERS. CARBON FILTERS ARE OPTIONAL. SEE 3D MODEL ID# 722271 FOR PLUMBING DETAIL

200GAL ASME RECEIVER INTERNALLY LINED. SEE 3D MODEL ID# 721887 FOR PLUMBING DETAIL

3X 7.5HP OILLESS SCROLL AIR END

DEW POINT MONITOR

CO MONITOR

53.45 2" NPT AIR INLET

ISOLATION PADS 6" X 6" X 1" (QTY.2)

ISOLATION PADS 4" X 4" X 1" (QTY.4)

38.60 3/4" NPT AIR OUTLET

- NOTES:
- 1) RECOMMENDED 24" CLEARANCE AROUND SYSTEM
  - 2) INSTALL ELECTRICAL CONTROL PANEL WITH CLEARANCE PER OSHA/NEC RECOMMENDATIONS

NOTE: SYSTEM DESIGNED IN COMPLIANCE WITH US NFPA'99, LATEST EDITION.

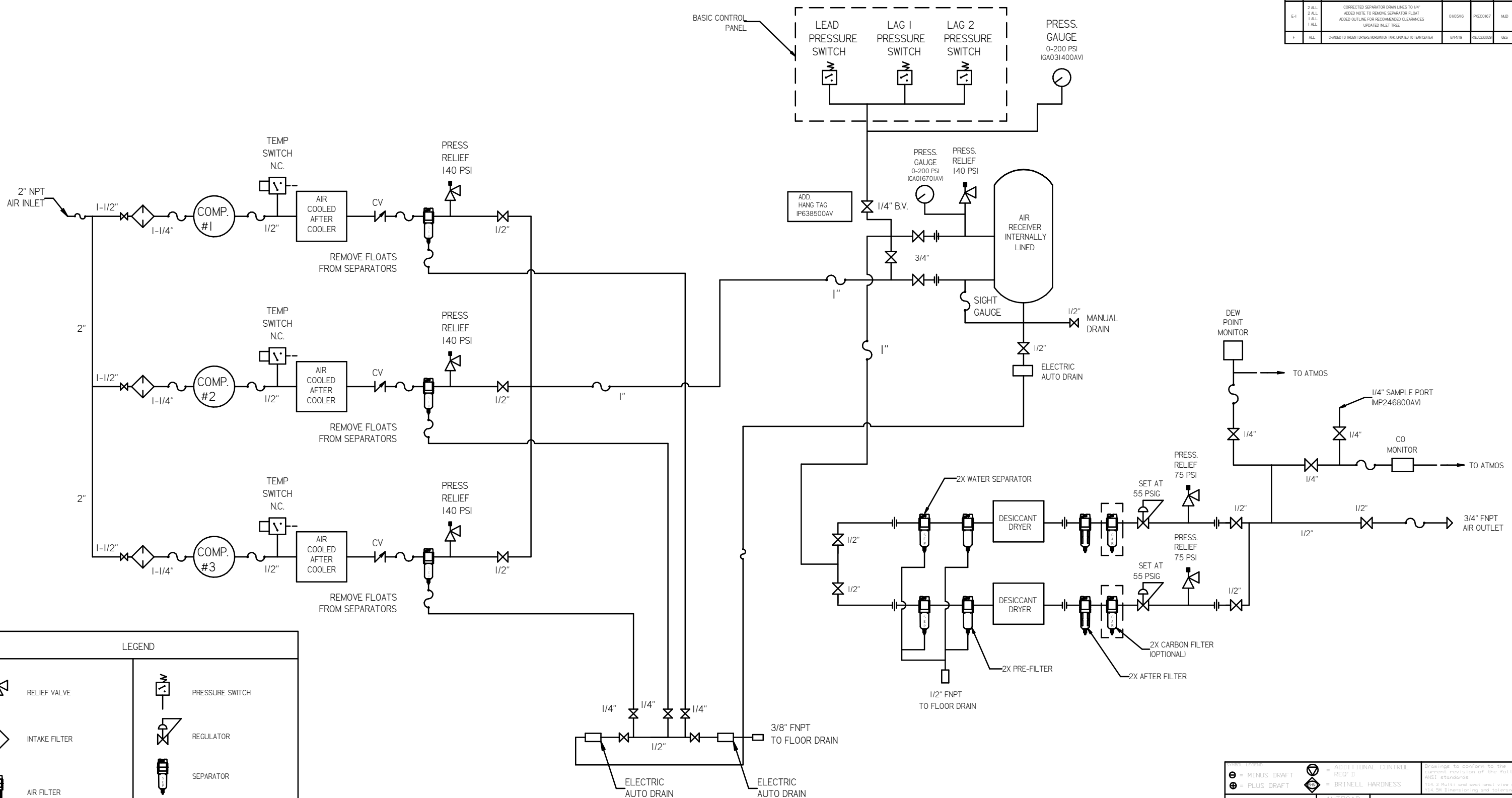
MINUS DRAFT PLUS DRAFT TOLERANCES NOT SPECIFIED XX ± XXX ± (NEG) ±	ADDITIONAL CONTROL REQ'D BRINELL HARDNESS	Drawings to conform to the current revision of the following AWS standards: 1) A 2 Multi and sectional view steps 1.4.10.1 Dimensions control and tolerancing
AUTOCAD REL2000i INCH	DO NOT SCALE DRAWING FOR DIMENSIONS Sheet 1 of 2 SCALE 1:14	
This drawing is the property of POWEREX, Inc. of the SCOTT FETZER COMPANY and subject to return on demand. Its contents are confidential and must not be copied or submitted to outside parties for use or distribution.	DRAWN BY AEK	CHECKED BY AEK
MATERIAL N/A	APPROVED BY JA	MFG/MKTG RJR
PART NAME MED TRIPLEX SCROLL 7.5HP, 200GAL. BASEMOUNT DUPLEX DESICCANT	DATE 5/20/14	DATE 5/20/14
PART NO MST0755	DATE 5/20/14	DATE 5/20/14



MST0755

SIZE D

REV	ZONE	REVISION	DATE	BY	NAME	CHKD
REV 1	ALL	RELEASE TO PRODUCT DEV				
C-1	ALL	CORRECTED UNIT NPT OUTLET SIZE TO 3/4"	10/7/14	PREC0067	GES	AEK
D-1	ALL	WAVE NECESSARY SMALLER FOOTPRINT	02/25/15	PREC0057	JE	AEK
E-1	2 ALL 1 ALL 1 ALL	CORRECTED SEPARATOR DRAIN LINES TO 1/4" ADDED NOTE TO REMOVE SEPARATOR FLOAT ADDED OUTLINE FOR RECOMMENDED CLEARANCES UPDATED INLET TREE	01/05/16	PREC0167	MJD	GES
F	ALL	CHANGED TO 100% DRYER MONITOR TIME, UPDATED TO 10M LEVEL	01/4/19	PREC02009	GES	MW



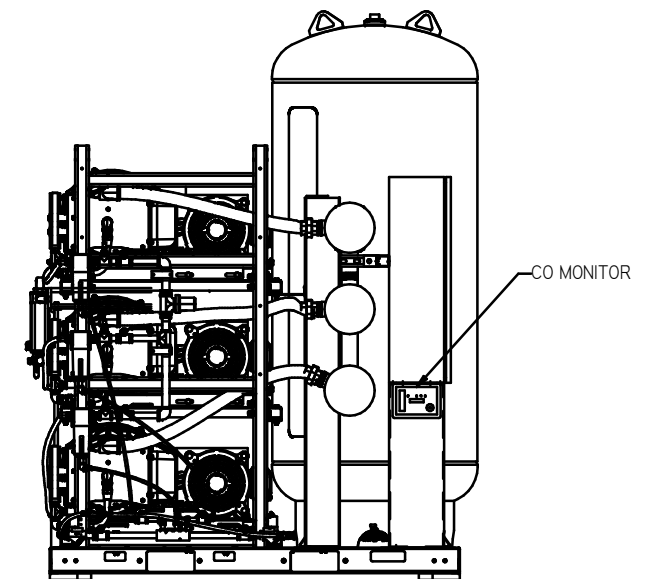
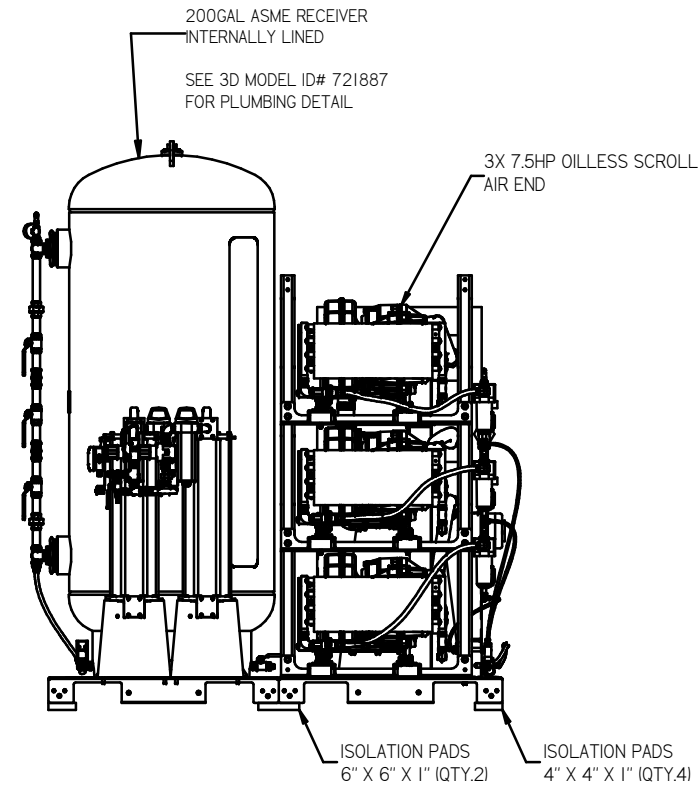
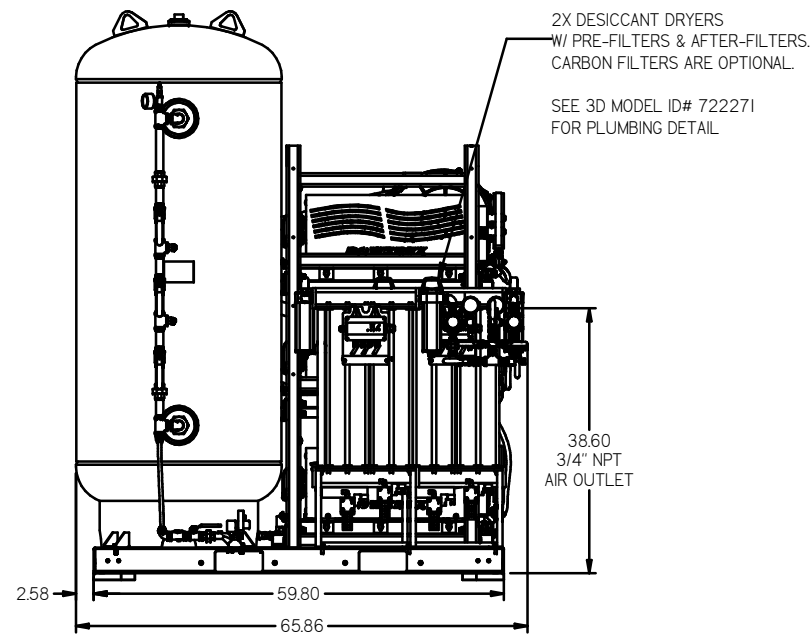
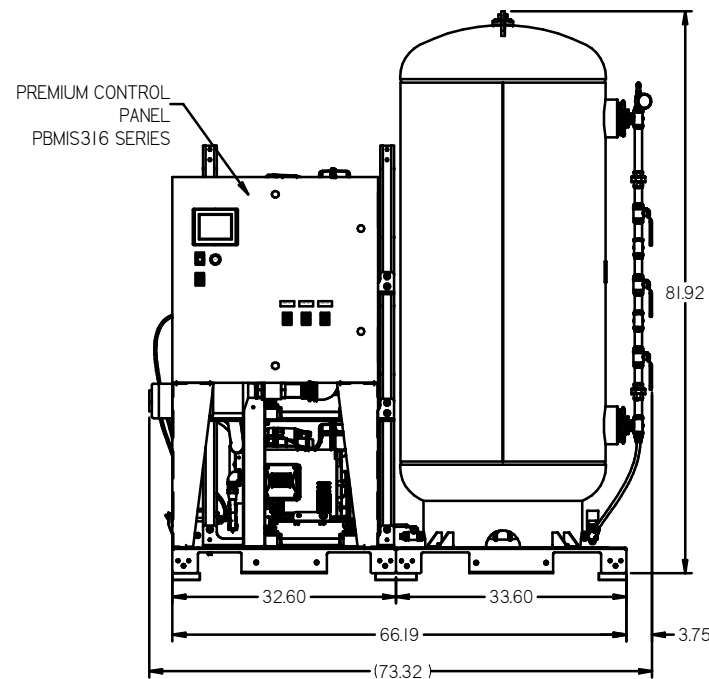
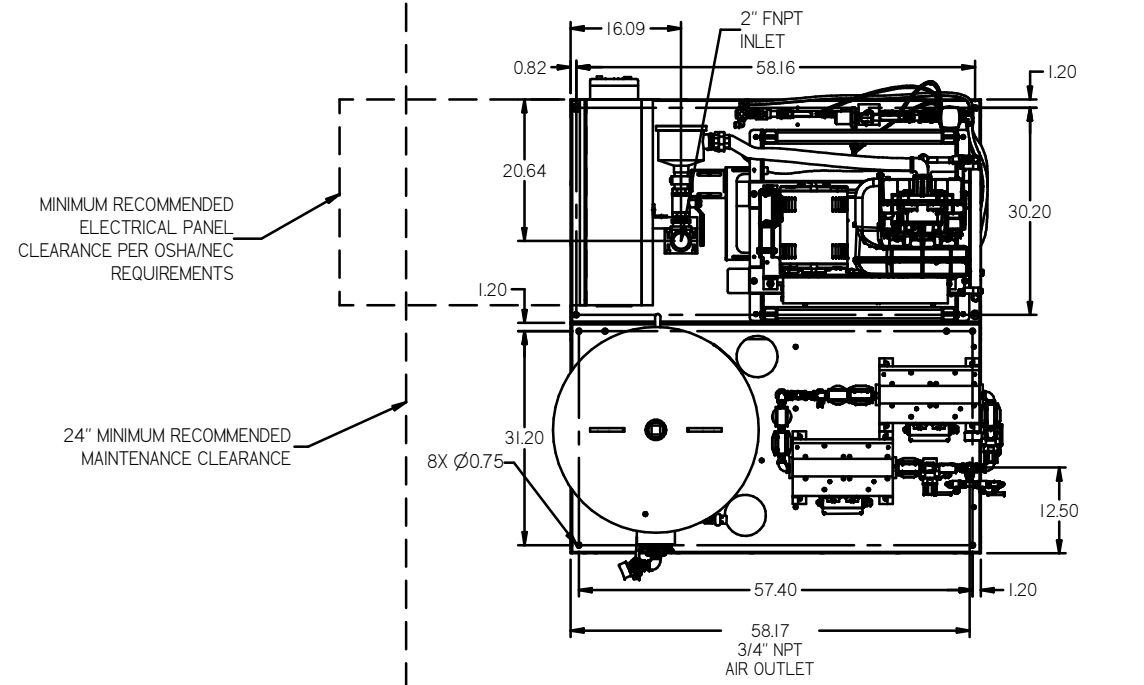
**LEGEND**

	RELIEF VALVE		PRESSURE SWITCH
	INTAKE FILTER		REGULATOR
	AIR FILTER		SEPARATOR
	3 WAY VALVE		CHECK VALVE
	CARBON FILTER		FLEX LINE
	BALL VALVE		HIGH TEMP SWITCH
			UNION

**NOTES:**  
 1) IF LAG 2 COMPRESSOR IS ENERGIZED ALARM WILL OCCUR.  
 2) PIPING TO THE INLET BY OTHERS AND TO BE PER NFPA99 4-3.1.1.9(b)  
 3) INSTRUMENTS DOWN STREAM OF SOURCE VALVE TO BE SUPPLIED BY OTHERS.

<p>MINUS DRAFT</p> <p>PLUS DRAFT</p> <p>ADDITIONAL CONTROL REQ'D</p> <p>BRINELL HARDNESS</p>	<p>Drawings to conform to the current revision of the following ASME standards:</p> <p>Y14.3 Multi and sectional view degn.</p> <p>Y14.99 Dimensioning and tolerancing</p>
<p>TOLERANCES NOT SPECIFIED</p> <p>XX ±</p> <p>XXX ±</p> <p>4 DEC. ±</p>	<p>AUTOCAD REL2000</p> <p>DO NOT SCALE DRAWING FOR DIMENSIONS</p> <p>Sheet 2 of 2</p> <p>SCALE 1:14</p>
<p>CONFIDENTIAL DISCLOSURE</p> <p>This drawing is the property of POWEREX, INC. or the SCOTT FETZER COMPANY and subject to return on demand. Its contents are confidential and must not be copied or submitted to outside parties for use or reproduction.</p>	<p>DRAWN BY: AEK</p> <p>CHECKED BY: GES</p> <p>APPROVED BY: DMS</p> <p>RJR</p> <p>5/20/14 5/20/14 5/20/14 5/20/14</p>
<p>MATERIAL: N/A</p> <p>PART NAME: MED 7.5HP SCROLL TRIPLEX FLOW SCHEMATIC</p>	<p><b>POWEREX</b></p> <p>INCORPORATED</p> <p>10000 W. HWY 100, SUITE 100, DENVER, CO 80231</p> <p>ENG NO: MST0755</p> <p>SIZE: D</p>

REV	ZONE	REVISION	DATE	EDN	NAME	CHKD
B-1	ALL	RELEASE TO PRODUCTION	5/20/14	PREC0015	AEK	GES
C-1	ALL	CORRECTED UNIT NPT OUTLET SIZE TO 3/4"	01/17/14	PREC0007	GES	AEK
D-1	ALL	WAVEI REDESIGN SMALLER FOOTPRINT	02/25/15	PREC0007	JBE	AEK
E-1	2 ALL	CORRECTED SEPARATOR DRUM LINES TO 1/4"	01/05/16	PREC0017	MJD	GES
E-2	2 ALL	ADDED NOTE TO REMOVE SEPARATOR FLOAT				
E-3	1 ALL	ADDED OUTLINE FOR RECOMMENDED CLEARANCES				
E-4	1 ALL	UPDATED INLET TIE				
F	ALL	CHANGED TO TREAT DREXEL MORGANTON TANK, UPDATED TO TEAM CENTER	8/14/19	PREC00109	GES	MAH

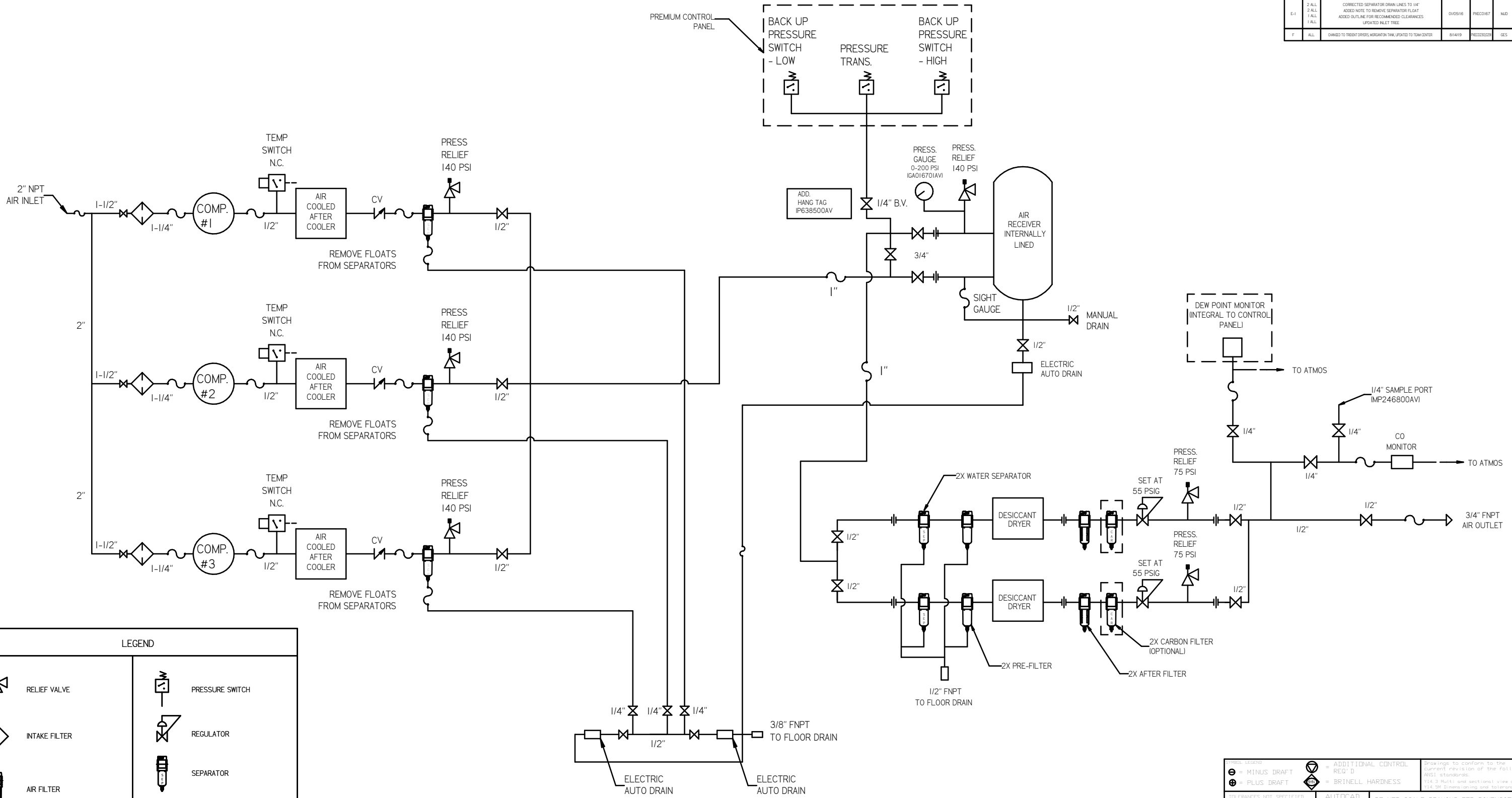


NOTES:  
 1) RECOMMENDED 24" CLEARANCE AROUND SYSTEM  
 2) INSTALL ELECTRICAL CONTROL PANEL WITH CLEARANCE PER OSHA/NEC RECOMMENDATIONS

NOTE: SYSTEM DESIGNED IN COMPLIANCE WITH US NFPA'99, LATEST EDITION.

MINUS DRAFT PLUS DRAFT AUTOCAD REL2000 DO NOT SCALE DRAWING FOR DIMENSIONS Sheet 1 of 2 SCALE 1:14 CONFIDENTIAL DISCLOSURE This drawing is the property of POWEREX, INC. of THE SCOTT PETZER COMPANY and subject to return on demand. Its contents are confidential and must not be copied or submitted to outside parties for use or examination.	ADDITIONAL CONTROL RED'D BRINELL HARDNESS DO NOT SCALE DRAWING FOR DIMENSIONS Sheet 1 of 2 SCALE 1:14 DRAWN BY: AEK CHECKED BY: AEK, JA, RJR 5/20/14, 5/26/14, 5/20/14, 5/20/14 MATERIAL: N/A PART NAME: MED TRIPLEX SCROLL 7.5HP, 200GAL, BASEMOUNT DUPLEX DESICCANT ENG NO: MST0755 SIZE: D
---	--

REV	ZONE	REVISION	DATE	ENR	NAME	CHKD
B-1	ALL	RELEASE TO PRODUCTION	JR	02/05/14	AEK	GES
C-1	ALL	CORRECTED UNIT NPT OUTLET SIZE TO 3/4"	11/17/14	PNEC0067	GES	AEK
D-1	ALL	WAVE REDESIGN SMALLER FOOTPRINT	02/25/15	PNEC0057	JBE	AEK
E-1	2 ALL 1 ALL 1 ALL	CORRECTED SEPARATOR DRAIN LINES TO UNIT ADDED NOTE TO REMOVE SEPARATOR FLOAT ADDED OUTLINE FOR RECOMMENDED CLEARANCES UPDATED INLET TREE	01/05/16	PNEC0167	MJD	GES
F	ALL	OWNED TO TRENT SHIPS WARRINGTON TANK, UPDATED TO TANK CENTER	01/14/19	PSC020209	GES	MMH



**LEGEND**

	RELIEF VALVE		PRESSURE SWITCH
	INTAKE FILTER		REGULATOR
	AIR FILTER		SEPARATOR
	3 WAY VALVE		CHECK VALVE
	CARBON FILTER		FLEX LINE
	BALL VALVE		HIGH TEMP SWITCH
			UNION

**NOTES:**  
 1) IF LAG 2 COMPRESSOR IS ENERGIZED ALARM WILL OCCUR.  
 2) PIPING TO THE INLET BY OTHERS AND TO BE PER NFPA99 4-3.1.1.9(b)  
 3) INSTRUMENTS DOWN STREAM OF SOURCE VALVE TO BE SUPPLIED BY OTHERS.

TOLERANCES NOT SPECIFIED XX ± XXX ± .XX (NEG.) ±	AUTOCAD REL2000	DO NOT SCALE DRAWING FOR DIMENSIONS Sheet 2 of 2 SCALE 1:14
This drawing is the property of POWEREX, INC. of the SCOTT FETZER COMPANY and subject to return on demand. Its contents are confidential and must not be copied or submitted to outside parties for use or examination.		
DRAWN BY AEK	CHECKED BY GES	APPROVED BY DMS, RJR
MATERIAL N/A	DATE 5/20/14	DATE 5/20/14
PART NAME MED 7.5HP SCROLL TRIPLEX FLOW SCHEMATIC		SIZE MST0755 D