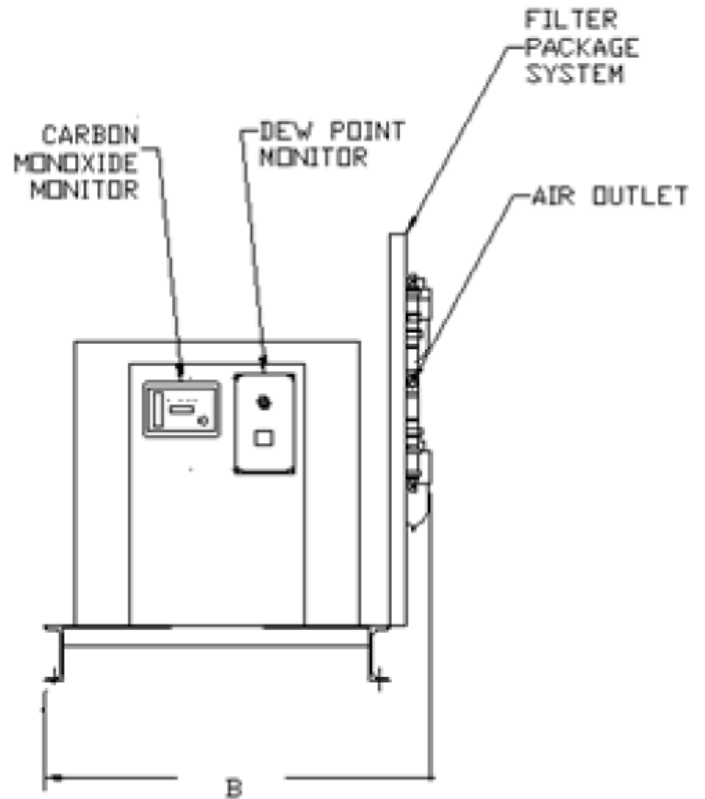
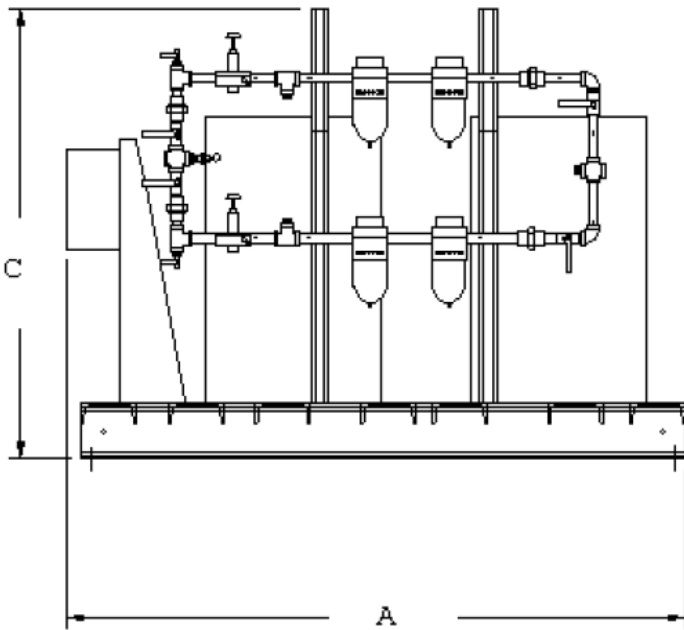
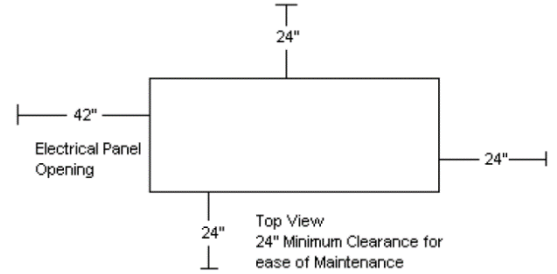


Dimensions					
Model	Dim. A	Dim. B	Dim. C	Inlet	Outlet
MDR0258	57"	36"	41"	½"	½"
MDR0358	57"	36"	41"	½"	¾"
MDR0558	57"	36"	41"	¾"	1"
MDR0708	57"	36"	41"	1"	1 ½"
MDR1008	57"	36"	41"	1"	1 ½"
MDR1508	57"	36"	41"	1 ½"	1 ½"



Medical Refrigerated Dryer						
Model	SCFM @ 100 PSIG	Power per Dryer (watts)	Dewpoint @ 50 PSIG	Voltage ¹		Unit Weight (lbs) ²
MDR0258	25	205	31°F	115V	208-230V	272
MDR0358	35	253	28°F	115V	208-230V	278
MDR0558	55	410	27°F	115V	208-230V	482
MDR0708	70	589	26°F	115V	208-230V	486
MDR1008	100	930	28°F	115V	208-230V	526
MDR1508	150	1,300	27°F	115V	208-230V	972

Note: Dryer Sizing - SCFM listed is for each dryer. Powerex Medical Dryer Systems provide 100% backup. When selecting the proper Medical Dryer System, match the listed SCFM with the SCFM of the compressor(s) in operation with one compressor in reserve per NFPA 99. Includes: filter package, CO monitor, and Dew point monitor.

1 – Dryer available in either 115V or 208-230V. Please specify voltage when ordering.

2 – Unit weights are approximate. Actual weights may vary.