

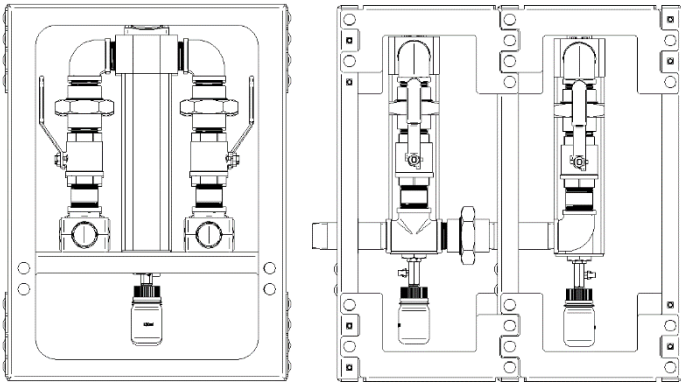
General

Powerex Medical Vacuum Filter Assemblies are designed protect the service professionals who perform maintenance on the vacuum units. The filters remove solid, liquid, and bacterial contamination as small as 0.01 micron with 99.999% efficiency through HEPA-grade filters.

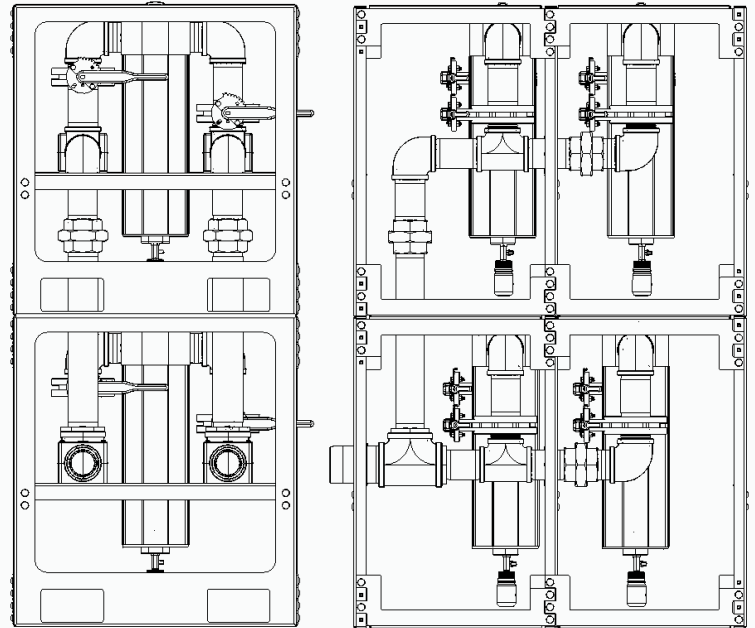
These units must be used in conjunction with a medical vacuum system to be compliant with the 2018 revision of NFPA 99 (5.1.3.7.4), which requires the addition of inlet bacteriologic filtration at the medical vacuum source.

The filter units include:

- Multiple filters mounted to a metal frame
- Single point connections for inlet and outlet pipes
- Isolation valves on source side and patient side for each filter
- Clear Borosil glass flask to easily detect liquid accumulation



Model MVF088



Model MVF804

Medical Vacuum Filter Assembly								
Model	CFM @ 19in Hg ¹	Height (in)	Width (in)	Depth (in)	Inlet NPT Size (in)	Outlet NPT Size (in)	Number of Filters per Assembly	Approximate System Weight (lbs)
MVF014	14	27	21	26	½"	½"	2	80
MVF036	36	27	21	27.5	1"	1"	2	105
MVF088	88	27	21	26.5	1 ½"	1 ½"	2	135
MVF126	126	40	27	34	2"	2"	2	215
MVF178	178	40	27	34	2"	2"	2	220
MVF268	268	37.5	36.5	51.5	3"	3"	2	435
MVF356	356	40	27	47.5	3"	3"	3	330
MVF536	536	37.5	36.5	74	4"	4"	3	690
MVF804	804	75	36.5	52	4"	4"	4	990

Notes:

1 – CFM capacities are shown with reserve filters on standby per NFPA 99.