



POWEREX<sup>™</sup>  
MEDICAL



POWEREX<sup>™</sup>  
MEDICAL

| Medical Gas Pipeline

150 Production Drive • Harrison, OH 45030 • USA  
T 1.888.769.7979 • F 513.367.3125 • [www.powerexinc.com](http://www.powerexinc.com)  
SL4560-BR • 19 April 2021



**Designed &  
Manufactured  
in the USA**

with U.S. and Imported Components

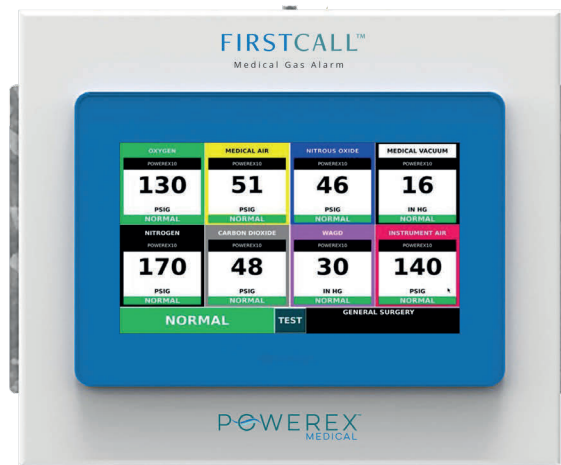


**Designed &  
Manufactured  
in the USA**

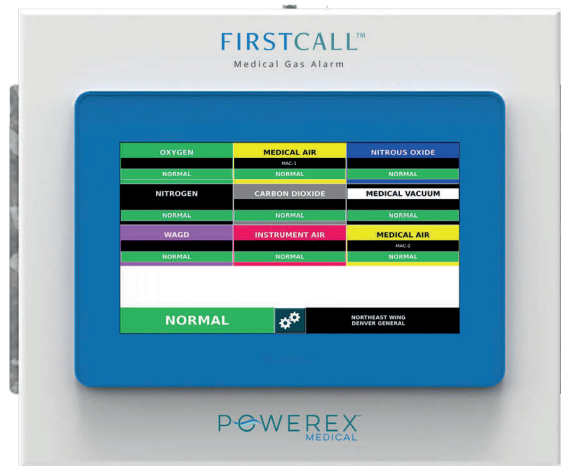
with U.S. and Imported Components



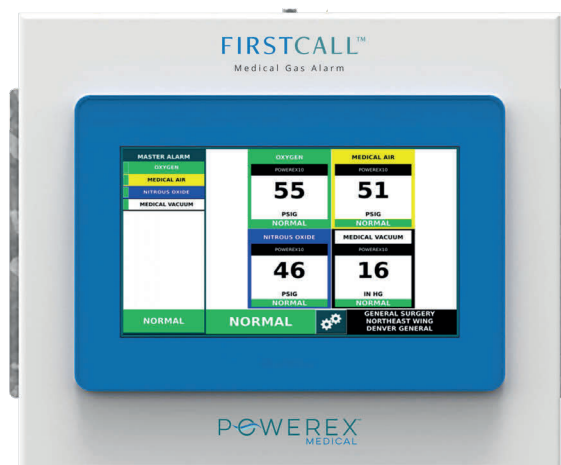
# FirstCall™ Medical Gas Alarm



Area Alarm system



Master Alarm system



Combo Alarm system

The Powerex FirstCall™ medical gas alarm systems digitally display gas pressure, monitor and display normal and alarm conditions from up to 55 remote medical gas source signals, and up to 8 medical gases.

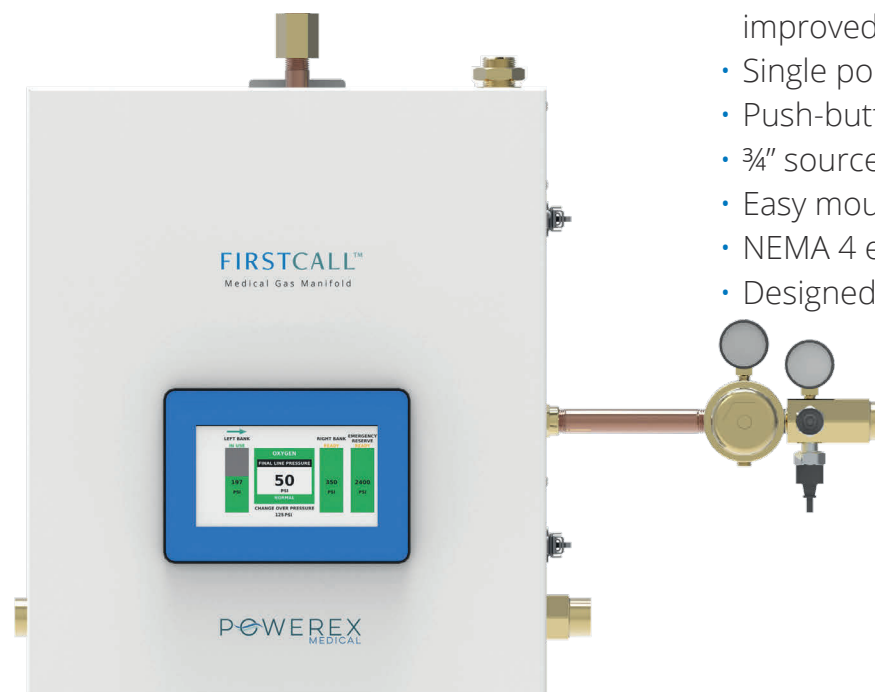
- Best-in-class medical gas alarm system
- Full, high-resolution touchscreen HMI
  - 10" and 7" screens available
- BACnet over IP available in all models
- Customizable alarm instructions
- Compact, space-saving design
- Optional digital outputs
- Easy to connect terminal blocks
- Intuitive, time-saving setup
- Automatically set high/low settings to +/-20% – industry first
- TEST button
  - Displays high/low settings
- Maintenance Mode
  - Disables alarm for 15 minutes
- Transducers may be installed in back box or remotely up to 5,000 ft
- Event history log accessible at the screen
- Designed and manufactured in the USA
- ETL Listed to UL 1069
- Retrofit kits available to upgrade existing alarm panels



# FirstCall™ Medical Gas Manifold



Cylinder x Cylinder Manifold

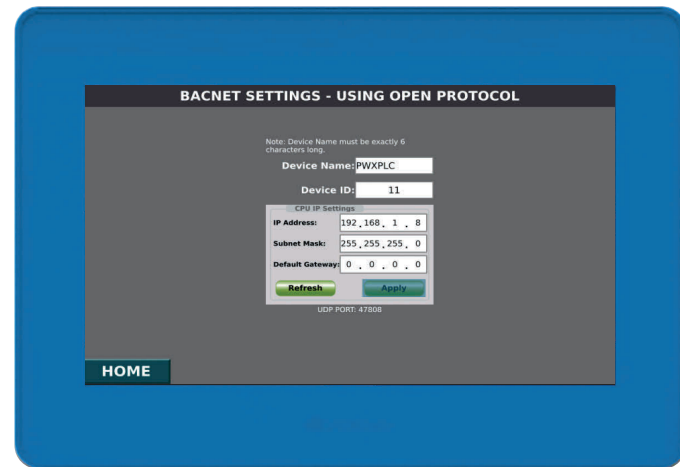


Liquid x Liquid Manifold

The Powerex FirstCall™ digital fully-automatic medical gas manifolds deliver an uninterrupted supply of medical gas to a facility. The manifold is cleaned, tested, and prepared for the intended medical gas service. It is constructed in accordance with requirements of the latest edition of NFPA 99 and CGA.

- Industry-leading flow capacity
- Full, high-resolution 7" touchscreen HMI
  - Graphically displays bank pressure, primary/secondary bank status, emergency reserve bank status (liquid only), final line pressure, changeover set point, and alarm status
- System logic controlled by next generation PLC technology
- BACnet over IP available in all models
- Maintenance Mode
  - Disables alarm for 15 minutes
- Final line sensor/switch included
- Robust changeover design using dome-loaded primary regulators controlled by dual solenoids
- Robust piston-style final line regulator
- Removable cabinet enclosure for improved service access
- Single point vent connection
- Push-button bank changeover
- 3/4" source valve included
- Easy mounting bracket system
- NEMA 4 enclosure optional
- Designed and manufactured in the USA

# BACnet

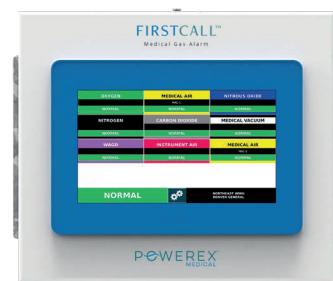


- Available in every alarm & manifold panel.
- Seamlessly connect to your building management system via Ethernet using BACnet over IP protocol
  - Centrally monitor medical gas equipment, along with all other facility equipment



Building Automation System

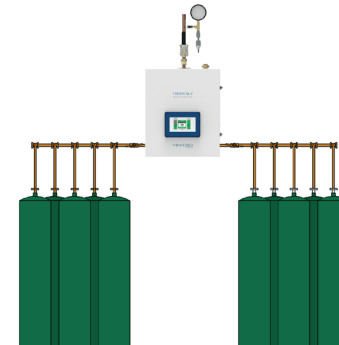
BACnet  
over IP



Medical Gas Alarm



Medical Air  
Compressor System



Medical Gas Manifold

# Universal Medical Gas Outlets



The new Powerex universal medical gas outlets are fully interchangeable with all the most common rough-in designs of the same gas service, allowing quick and easy conversion from one connection style to another.

- Compatible with all the most common rough-in designs
- High flow rates with minimal pressure drop
- 360° swivel inlet tube
- Durable NFPA 99 color-coded gas identification
- Outlet repair kits available
- Connection types:
  - Ohmeda
  - Chemetron
  - DISS
  - Puritan Bennett
- Mounting types:
  - Wall
  - Ceiling
  - Console

## Outlet configuration options



Ohmeda Connection



Chemetron Connection with  
optional grey trim plate



DISS Connection



Puritan Bennett Connection



Chemetron® compatible 500 Series outlets

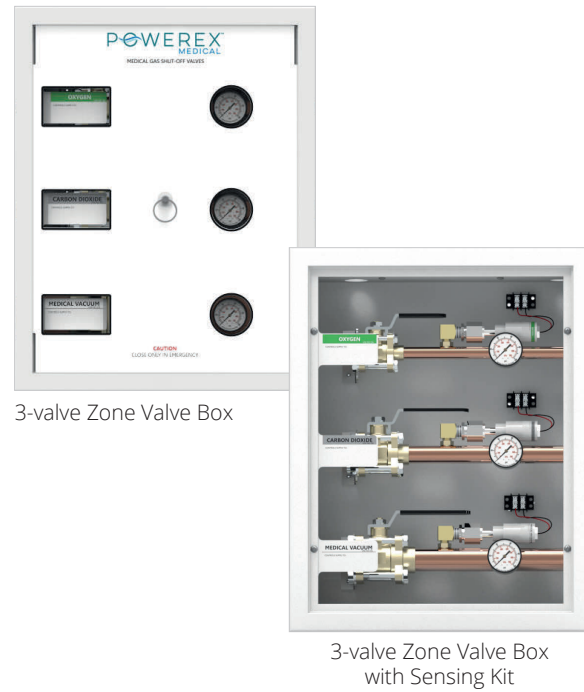


## Chemetron® compatible outlets

The Powerex 500 Series equivalent quick connect outlets are dimensionally identical and compatible with the Allied Chemetron® 500 series outlets.



# Zone Valve Boxes

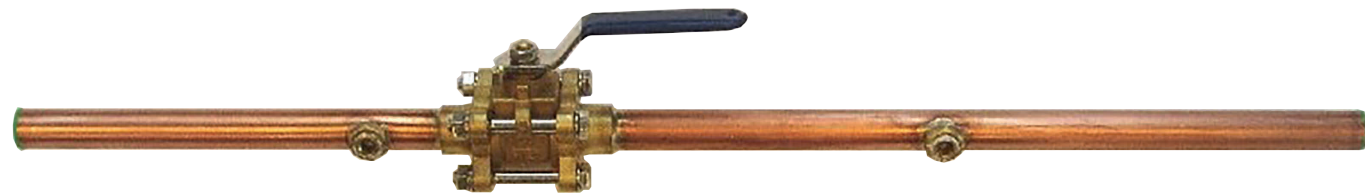


Powerex Zone Valve Boxes are configured vertically to maximize wall space and can include up to 7 ball valves per box. Valve sizes range from 1/2" to 3". Key features include:

- Forged brass, three piece in-line repairable full port ball valves
- Type K copper extensions and locking handles
- Working pressure of 600 psi (29 in/Hg vacuum)
- Plastic insulators to prevent galvanic corrosion

Powerex offers an optional sensing kit so the transducer can be remotely mounted in the box. It provides an easy-to-locate and test location for transducers, and a safe, fast method for backfeeding medical gases without shutting down the gas supply or disrupting patients.

# Ball Valves



Powerex valves are three-piece, ball type design available in sizes 1/2" to 4". They are cleaned for oxygen service and meet NFPA 99 and CGA requirements with a working pressure of 600 psi (29 in/Hg vacuum).

- Forged brass, three-piece in-line repairable full port ball valves
- Blow-out proof stem design
- Working pressure of 600 psi (29 in/Hg vacuum)
- Dual 1/8" brass NPT ports on valves
  - Improved, easier-to-remove gauge port plugs
- Cleaned for oxygen service
- Type K copper extensions

# Additional Pipeline Products



Emergency Oxygen Supply Connection

Powerex offers a full line of additional pipeline products, including:

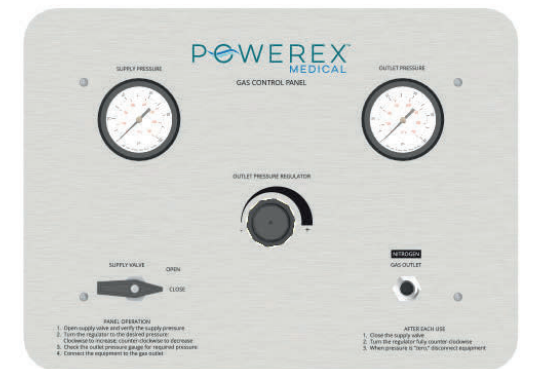
- Emergency Oxygen Supply Connection Boxes
- Gas control panels – N2, CO2, Instrument Air
- Check Valves & Relief Valves
- Butterfly Valves
- Pressure Switches and Gauges
- Medical Gas Hoses



Check Valve



Pressure Switch Assembly



Gas Control Panel

# Industry-leading Warranty

*We stand by our products, so our pipeline products have the best warranty on the market —*

***5 years for parts / 2 years for labor***