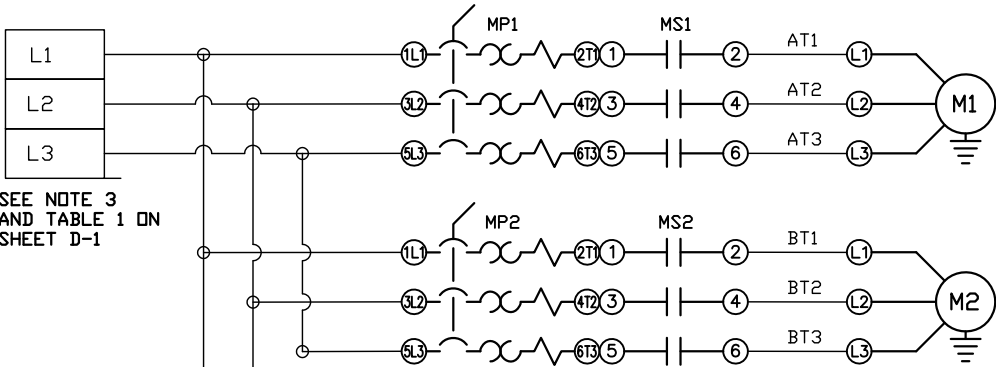
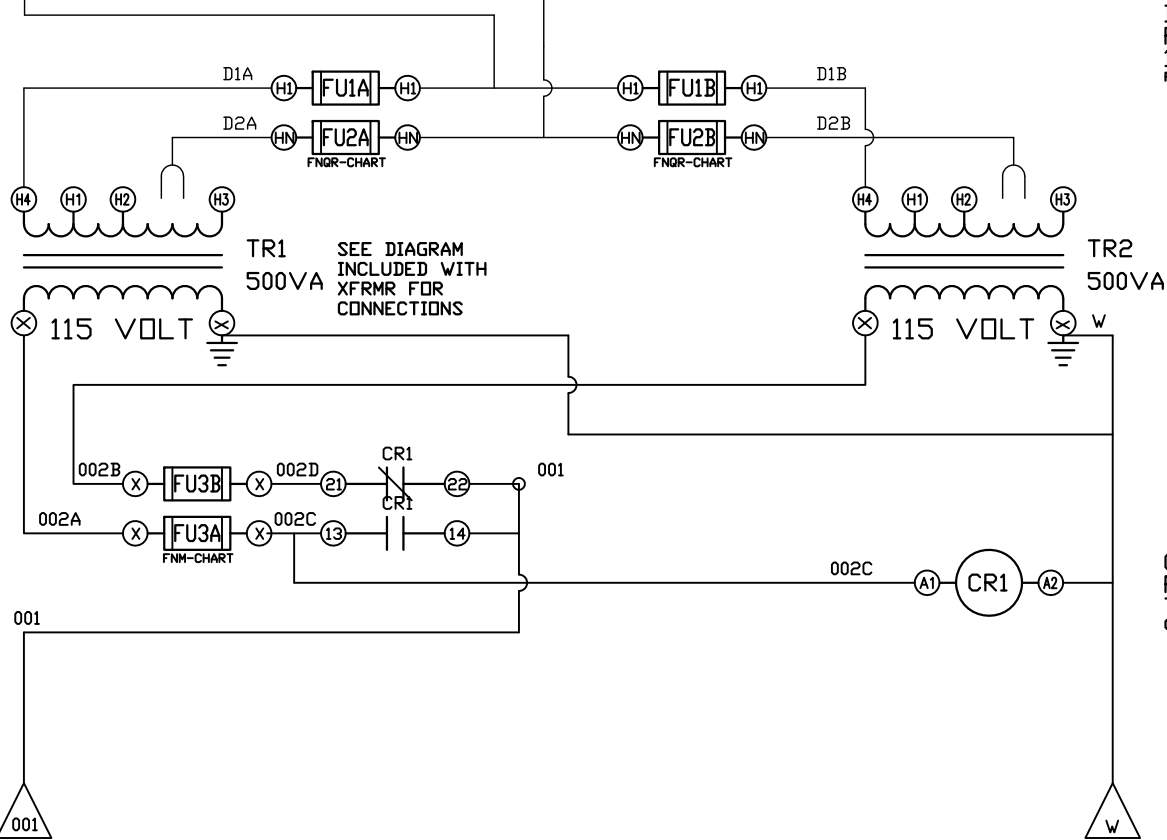


REV	REVISION	DATE	ECN	NAME	CHKD
B-1	RELEASE TO PRODUCTION	09/15/23	PXEC0521	KMD	AJL



A  
POWER  
UNIT #1  
MP1 10

B  
POWER  
UNIT #2  
MP2 11



D  
POWER  
120V CONTROL  
FU1&2 A, B

01  
PRIMARY  
TRANSFORMER ON  
CR1 00 02

OPTIONAL:

POWEREX™

CONFIDENTIAL DISCLOSURE:  
This drawing is the property of POWEREX, INC. of the SCOTT FETZER COMPANY and subject to return on demand. Its contents are confidential and must not be copied or submitted to outside parties for use or examination.

DRAWN BY	CHECKED BY	ENGINEERING APPROVAL
KMD	AJL	KMD
09/15/23	09/15/23	09/15/23

PANEL TYPE  
DUPLEX INST AIR COMP  
HMI, NFPA

DWG. TYPE WIRING

DWG. NO.

PBIA-269

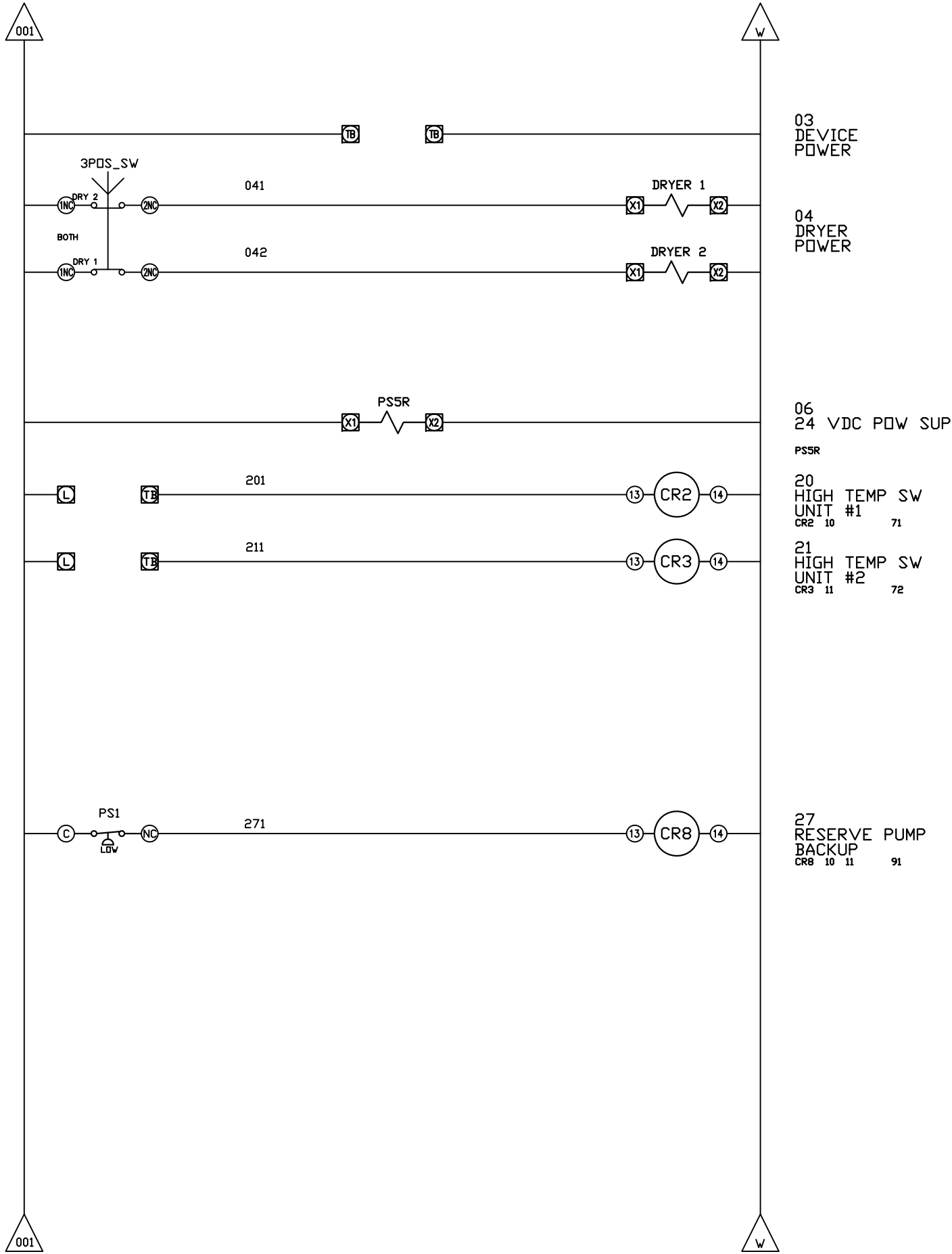
SHEET

W-1

SIZE

B

REV	REVISION	DATE	ECN	NAME	CHKD
B-1	RELEASE TO PRODUCTION	09/15/23	PXEC0521	KMD	AJL



OPTIONAL:

POWEREX™

CONFIDENTIAL DISCLOSURE:  
This drawing is the property of POWEREX, INC. of the SCOTT FETZER COMPANY and subject to return on demand. Its contents are confidential and must not be copied or submitted to outside parties for use or examination.

DRAWN BY	CHECKED BY	ENGINEERING APPROVAL
KMD	AJL	KMD
09/15/23	09/15/23	09/15/23

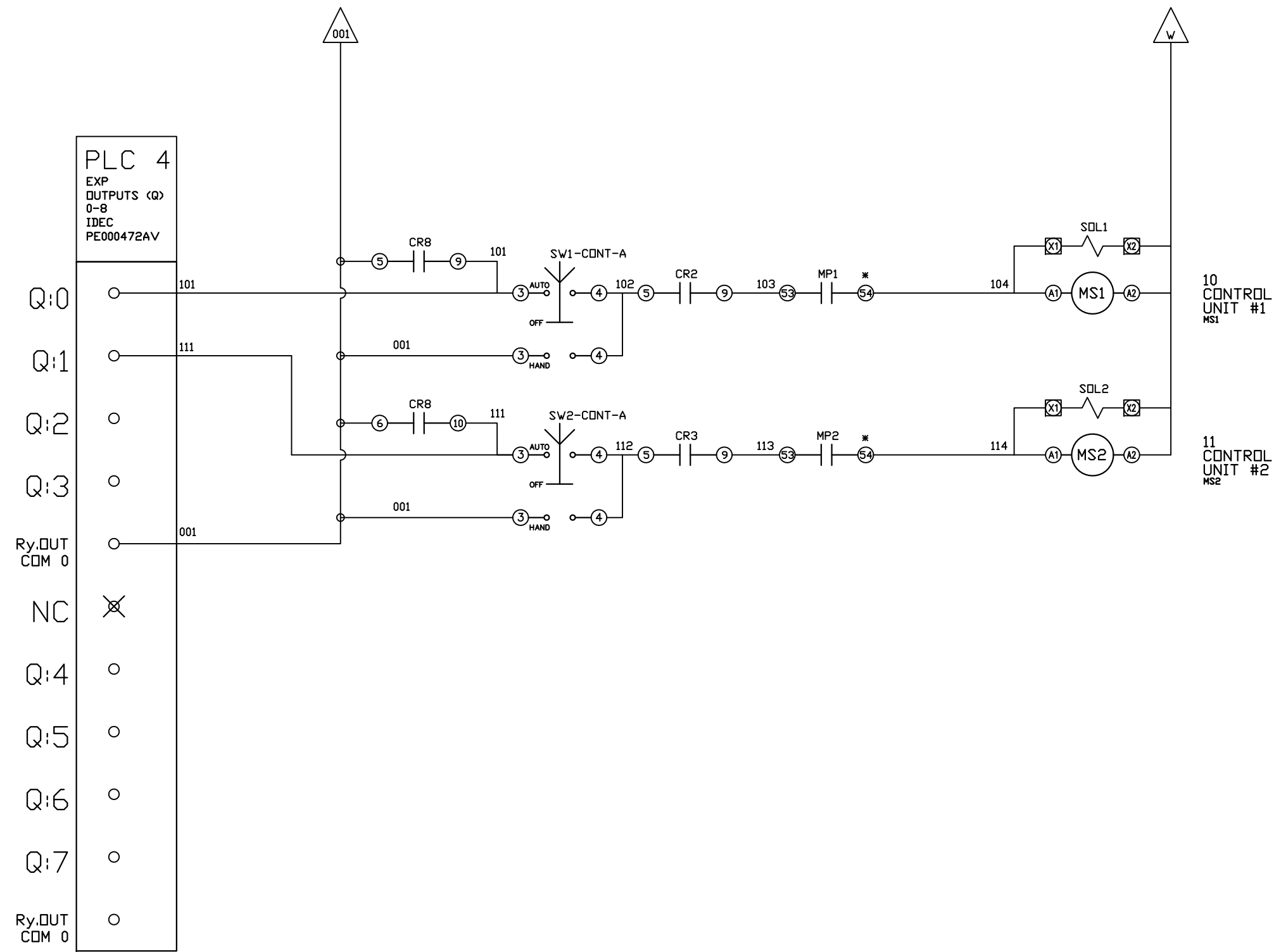
PANEL TYPE  
DUPLX INST AIR COMP  
HMI, NFPA

DWG. TYPE WIRING

DWG. NO.  
PBIA-269

SHEET	SIZE
W-2	B

REV	REVISION	DATE	ECN	NAME	CHKD
B-1	RELEASE TO PRODUCTION	09/15/23	PXEC0521	KMD	AJL



OPTIONAL:

POWEREX™

CONFIDENTIAL DISCLOSURE:  
This drawing is the property of POWEREX, INC. of the SCOTT FETZER COMPANY and subject to return on demand. Its contents are confidential and must not be copied or submitted to outside parties for use or examination.

DRAWN BY	CHECKED BY	ENGINEERING APPROVAL
KMD	AJL	KMD
09/15/23	09/15/23	09/15/23

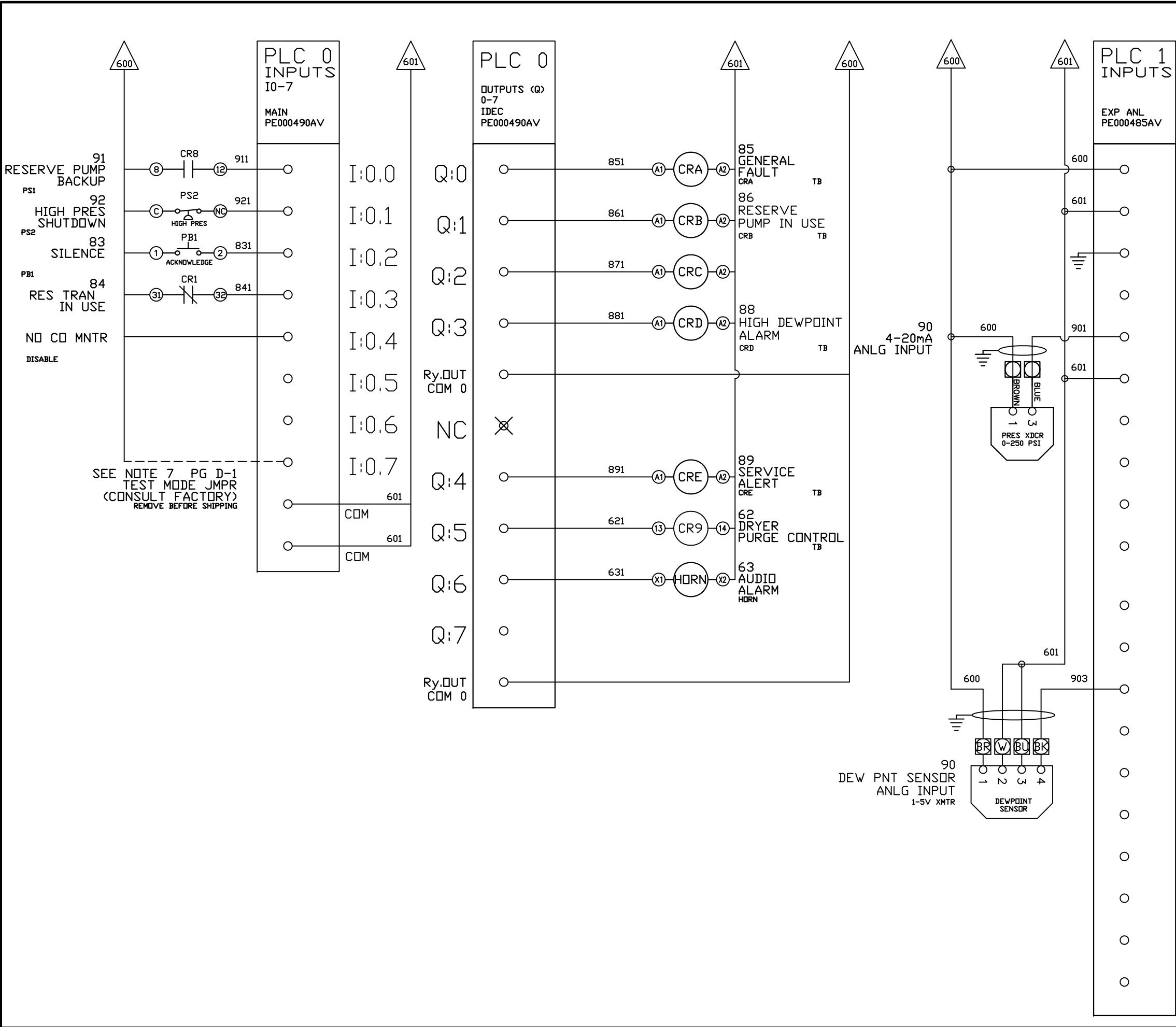
PANEL TYPE  
DUPLEX INST AIR COMP  
HMI, NFPA

DWG. TYPE  
WIRING

DWG. NO.  
PBIA-269

SHEET	SIZE
W-3	B

\* FOR GV4 MOTOR PROTECTORS USE PINS #1 AND #4 ON AUX CONTACT IN 'OF1' SLOT



REV	REVISION	DATE	ECN	NAME	CHKD
B-1	RELEASE TO PRODUCTION	09/15/23	PXEC0521	KMD	AJL

24V DC	IN.0 +
0V	IN.0 -
GND	IN.1 +
NC	IN.1 -
	IN.2 +
	IN.2 -
	IN.3 +
	IN.3 -
	IN.4 +
	IN.4 -
	IN.5 +
	IN.5 -
	IN.6 +
	IN.6 -
	IN.7 +
	IN.7 -

OPTIONAL:		
<div>POWEREX</div>		
CONFIDENTIAL DISCLOSURE: This drawing is the property of POWEREX, INC. of the SCOTT FETZER COMPANY and subject to return on demand. Its contents are confidential and must not be copied or submitted to outside parties for use or examination.		
DRAWN BY	CHECKED BY	ENGINEERING APPROVAL
KMD	AJL	KMD
09/15/23	09/15/23	09/15/23
PANEL TYPE		
DUPLEX INST AIR COMP HMI, NFPA		
DWG. TYPE WIRING		
DWG. NO.		
PBIA-269		
SHEET		SIZE
W-4		B

PBIA-269





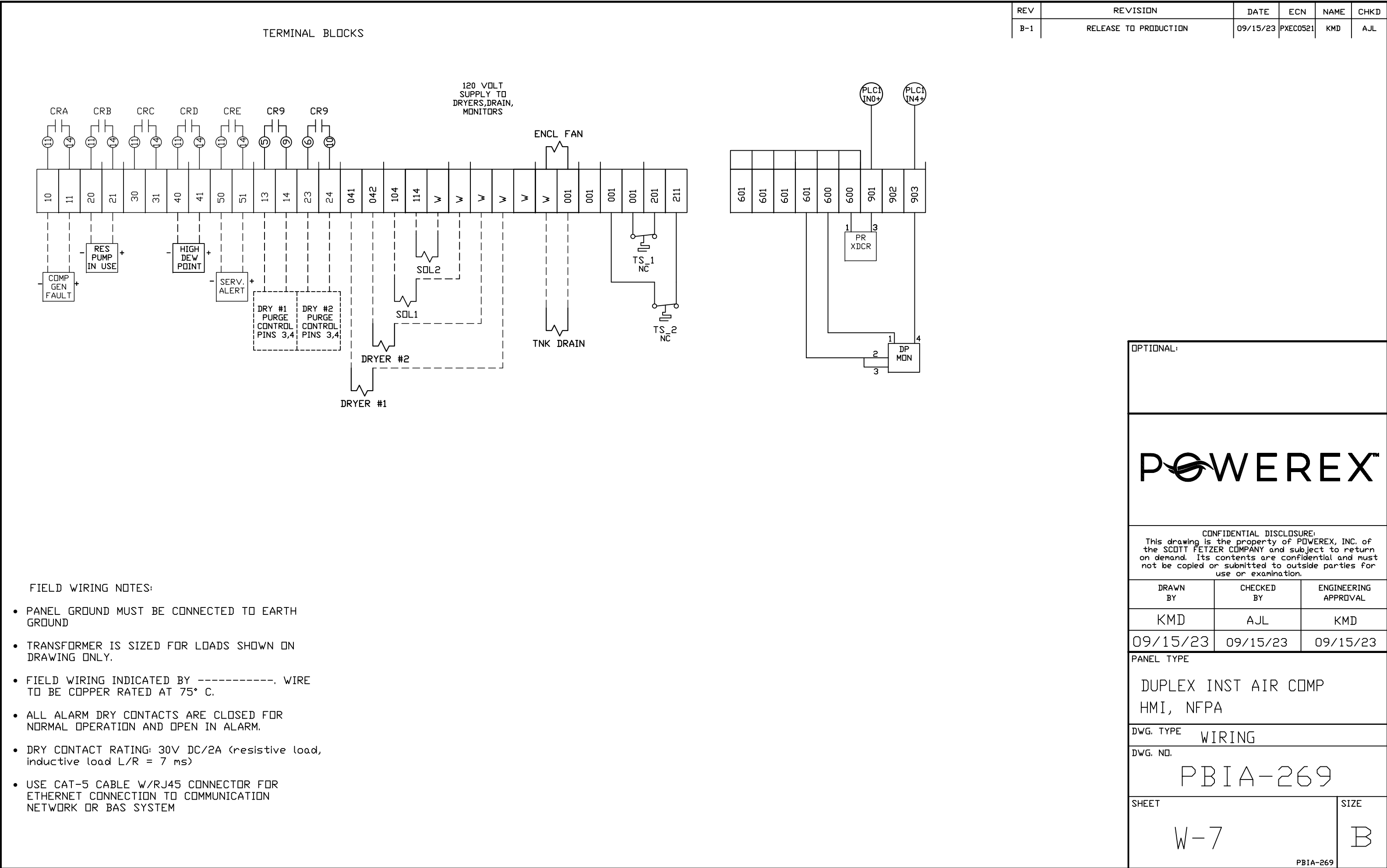


TABLE 1	P/N	MOTOR FULL LOAD AMPS	TOTAL FULL LOAD AMPS	NON- TIME DELAY FUSE	TIME DELAY FUSE	INVERSE- TIME CIRCUIT BREAKER
208V (3Ø)	02AJ	4.1	10.2	20	15	20
	12AJ	4.5	11	20	15	20
	22AJ	6	14	30	20	25
	32AJ	8.5	19	40	30	35
	52AJ	14	30	60	45	60
	72AJ	20.5	43	90	60	80
	A2AJ *	27.4	56.8	125	80	100
	F2AJ *	41.1	84.2	175	125	150
230V (3Ø)	03AJ	3.6	9.2	20	15	20
	13AJ	4.4	10.8	20	15	20
	23AJ	5.8	13.6	30	20	25
	33AJ	7.7	17.4	35	25	30
	53AJ	12.7	27.4	60	40	50
	73AJ	18.5	39	80	60	70
	A3AJ	24.8	51.6	110	70	90
	F3AJ *	37.2	76.4	175	125	150
460V (3Ø)	04AJ	1.8	5.6	10	10	10
	14AJ	2.2	6.4	15	10	15
	24AJ	2.9	7.8	15	10	15
	34AJ	3.9	9.8	20	15	20
	54AJ	6.3	14.6	30	20	25
	74AJ	9.3	20.6	40	30	40
	A4AJ	12.4	26.8	60	40	50
	F4AJ	18.6	39.2	80	60	70
380V (3Ø) 50HZ	08AJ					
	18AJ					
	28AJ	3.4	8.8	20	15	15
	38AJ	4.6	11.2	25	15	20
	58AJ	7.7	17.4	35	25	30
	78AJ	11.1	24.2	50	35	45
	A8AJ	14.9	31.8	70	45	60
	F8AJ	22.1	46.2	100	70	80
575V (3Ø)	07AJ	1.1	4.2	10	10	10
	17AJ	1.76	5.5	10	10	10
	27AJ	2.3	6.6	15	10	15
	37AJ	3.1	8.2	15	15	15
	57AJ	5.1	12.2	25	20	25
	77AJ	6.9	15.8	30	25	30
	A7AJ	9.9	21.8	45	30	40
	F7AJ	14.9	31.8	70	45	60

\* - USE LAYOUT B

NOTES:

1. RECOMMENDED TIGHTENING TORQUES FOR WIRE TERMINALS:  
208-575 VOLT POWER 35 POUND INCHES  
120 VOLT POWER AND CONTROL VOLTAGE 15 POUND INCHES
2. PANEL GROUND MUST BE CONNECTED TO EARTH GROUND
3. INSTALLER TO PROVIDE MAIN DISCONNECTING DEVICE WITH SHORT CIRCUIT PROTECTION FOR THIS ELECTRICAL ASSEMBLY. SEE TABLE 1 .
4. ALL WIRES MUST BE LABELED ON BOTH ENDS
5. TRANSFORMER IS SIZED FOR LOADS SHOWN ON DRAWING ONLY. DO NOT CONNECT ANY OTHER DEVICES
6. △ -INDICATES A DRAWING WIRE CONNECTION TO ANOTHER PAGE.
7. TEST MODE JUMPER WILL CHANGE ALTERNATION CYCLE AND MINIMUM RUM TIMERS. USE WITHOUT AUTHORIZATION MAY CAUSE UNSTABLE OPERATION. CONSULT FACTORY BEFORE USE.

FIELD WIRING NOTES ON PAGE W-7.

CONTROL TRANSFORMERS - 500VA					
FUSE		208	230	460 380	575
TYPE		VOLT	VOLT	VOLT	VOLT
FU1,2A FU1,2B	FNQR	6A	5A	5A	4A
FU3A,B	FNM	7A	7A	7A	7A
SEE XFRMR FOR CONNECTIONS					

WIRE TYPE TABLE			
VOLTAGE	WIRE NUMBERS	GAUGE	COLOR
120VAC	001-599	16-18AWG	RED/BLK
0VAC	W	16-18AWG	WHT/BLK
24VDC	600-999	16-18AWG	PURPLE
0VDC	601,701	16-18AWG	PURPLE
GND	-	VARIES	GREEN
CUSTOMER SUPPLY	01-99	16-18AWG	YELLOW

SEQUENCE OF OPERATIONS

During normal operation the PBMI controller will signal the Lead compressor to run when pressure drops below lead cut-in set-point and stop when the pressure reaches the lead cut-out set-point. Lead alternation to the next pump, will occur every 60-minutes. If demand cannot be satisfied by the lead pump, the lag pump(s) will start and stop based upon the lag cut-in and cut-out set-points. The HOA switch’s place the pump in the following modes: Hand-turns pump on to run continuous. Off-disables pump from running. Auto-places pump in the “ready mode” and will start and stop based on sequence described above.


All plex configurations include a hardwired backup pressure switch circuit should a control failure occur. This circuit will call all pumps on and off based on the reserve pressure switch set-points.

Expandable systems include all control devices, operators, and programming for the maximum number of pumps required. To expand the system: navigate to the “Service Info” screen and enter the number of pumps (or plex).

Additional information and descriptions can be accessed through the HMI’s “Service Info” screen by pressing Sequence of Operations button.

REV	REVISION	DATE	ECN	NAME	CHKD
B-1	RELEASE TO PRODUCTION	03/12/12	22545	BFH	CHR
C-1	FORMAT UPDATE	03/04/13	PXEC0038	BFH	CHR

OPTIONAL:  
  
208V/230V/460V/380V/575V



CONFIDENTIAL DISCLOSURE:  
This drawing is the property of the CAMPBELL GROUP of the SCOTT FETZER COMPANY and subject to return on demand. Its contents are confidential and must not be copied or submitted to outside parties for use or examination.

DRAWN BY

BFH

CHECKED BY

CHR

ENGINEERING APPROVAL

CHR

03/12/12

09/20/11

09/20/11

PANEL TYPE

COMPRESSOR DATA TABLE  
3PH DUPLEX PANEL DATA

DWG. TYPE

MISC

DWG. NO.

DATA TABLE

SHEET

D-1

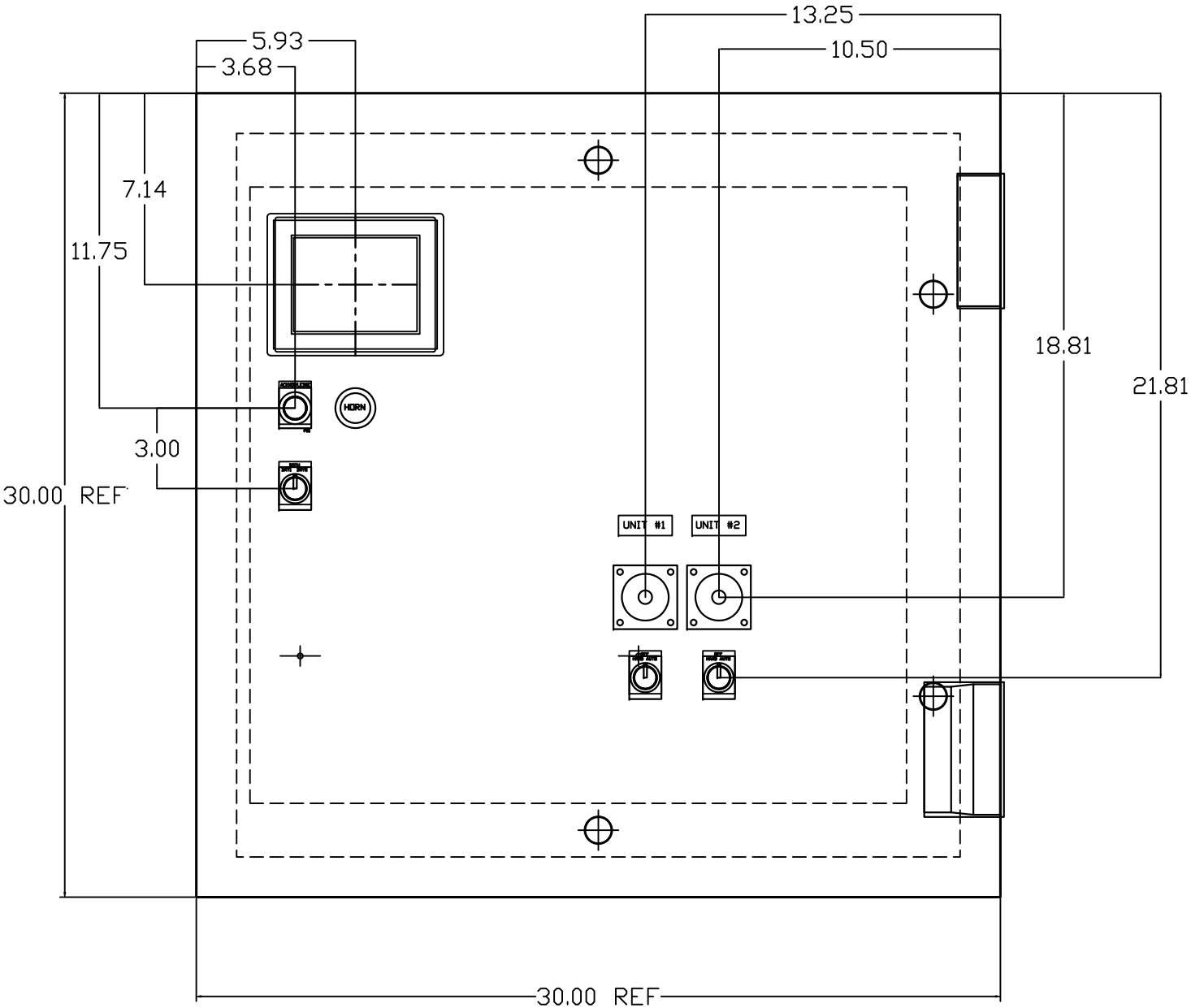
SIZE

B

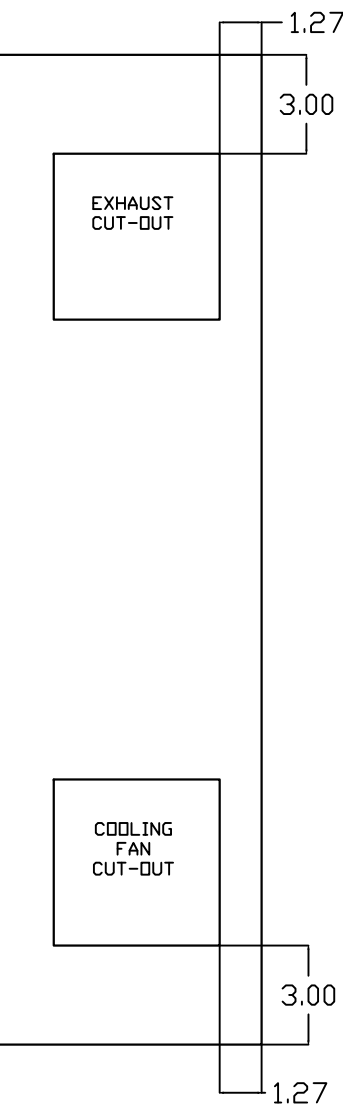
DUPLEX PANEL DATA



REV	REVISION	DATE	ECN	NAME	CHKD
B-1	RELEASE TO PRODUCTION	09/15/23	PXEC0521	KMD	AJL

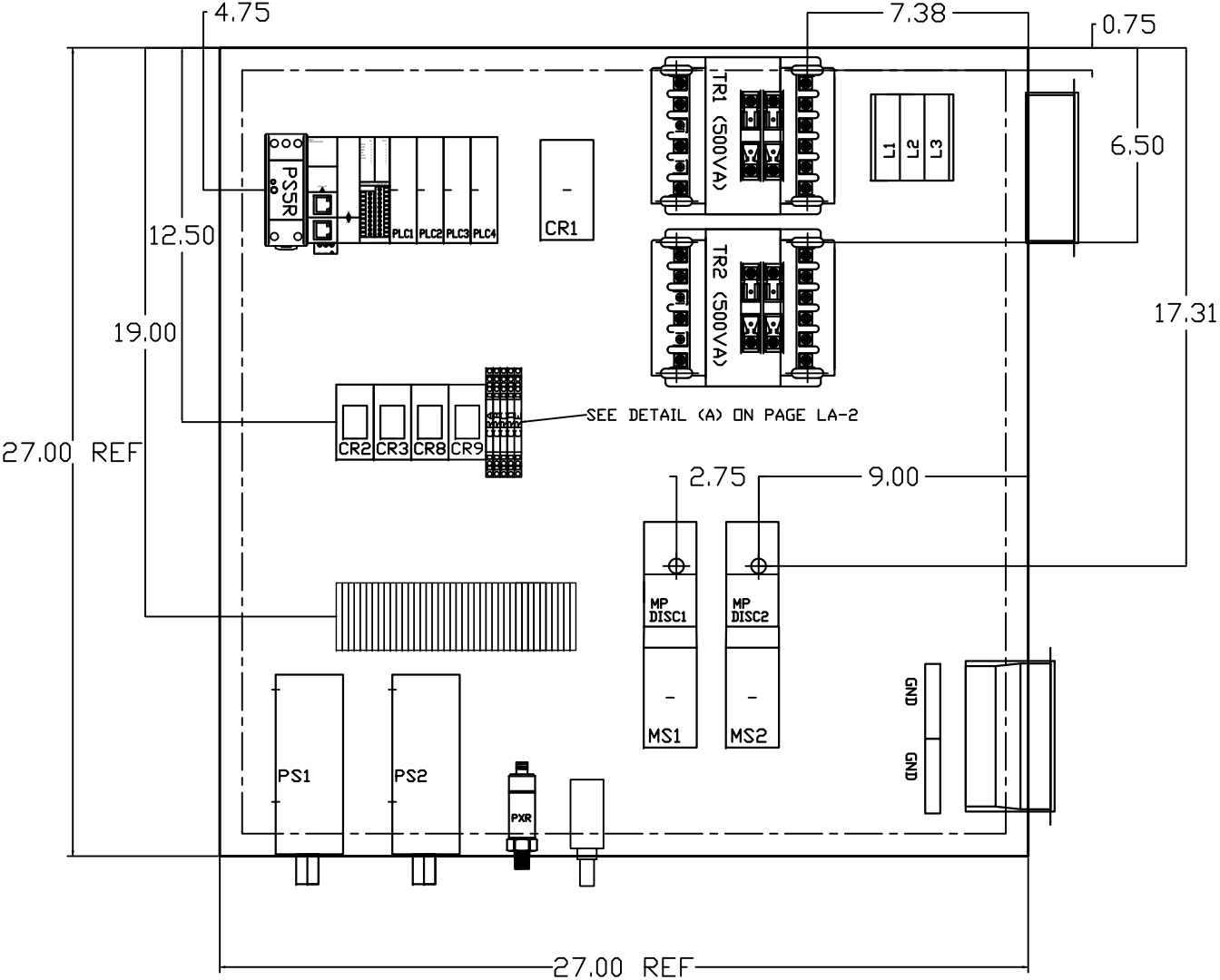


RIGHT SIDE OF ENCLOSURE

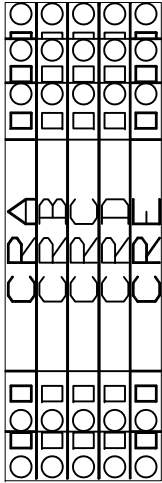


OPTIONAL:		
<b>POWEREX™</b>		
CONFIDENTIAL DISCLOSURE: This drawing is the property of POWEREX, INC. of the SCOTT FETZER COMPANY and subject to return on demand. Its contents are confidential and must not be copied or submitted to outside parties for use or examination.		
DRAWN BY	CHECKED BY	ENGINEERING APPROVAL
KMD	AJL	KMD
09/15/23	09/15/23	09/15/23
PANEL TYPE		
DUPLEX INST AIR COMP HMI, NFPA		
DWG. TYPE LAYOUT		
DWG. NO. PBIA-269		
SHEET		SIZE
LA-1		B

REV	REVISION	DATE	ECN	NAME	CHKD
B-1	RELEASE TO PRODUCTION	09/15/23	PXEC0521	KMD	AJL



DETAIL (A)



OPTIONAL:

CONFIDENTIAL DISCLOSURE:  
This drawing is the property of POWEREX, INC. of the SCOTT FETZER COMPANY and subject to return on demand. Its contents are confidential and must not be copied or submitted to outside parties for use or examination.

DRAWN BY	CHECKED BY	ENGINEERING APPROVAL
KMD	AJL	KMD
09/15/23	09/15/23	09/15/23

PANEL TYPE

DUPLEX INST AIR COMP  
HMI, NFPA

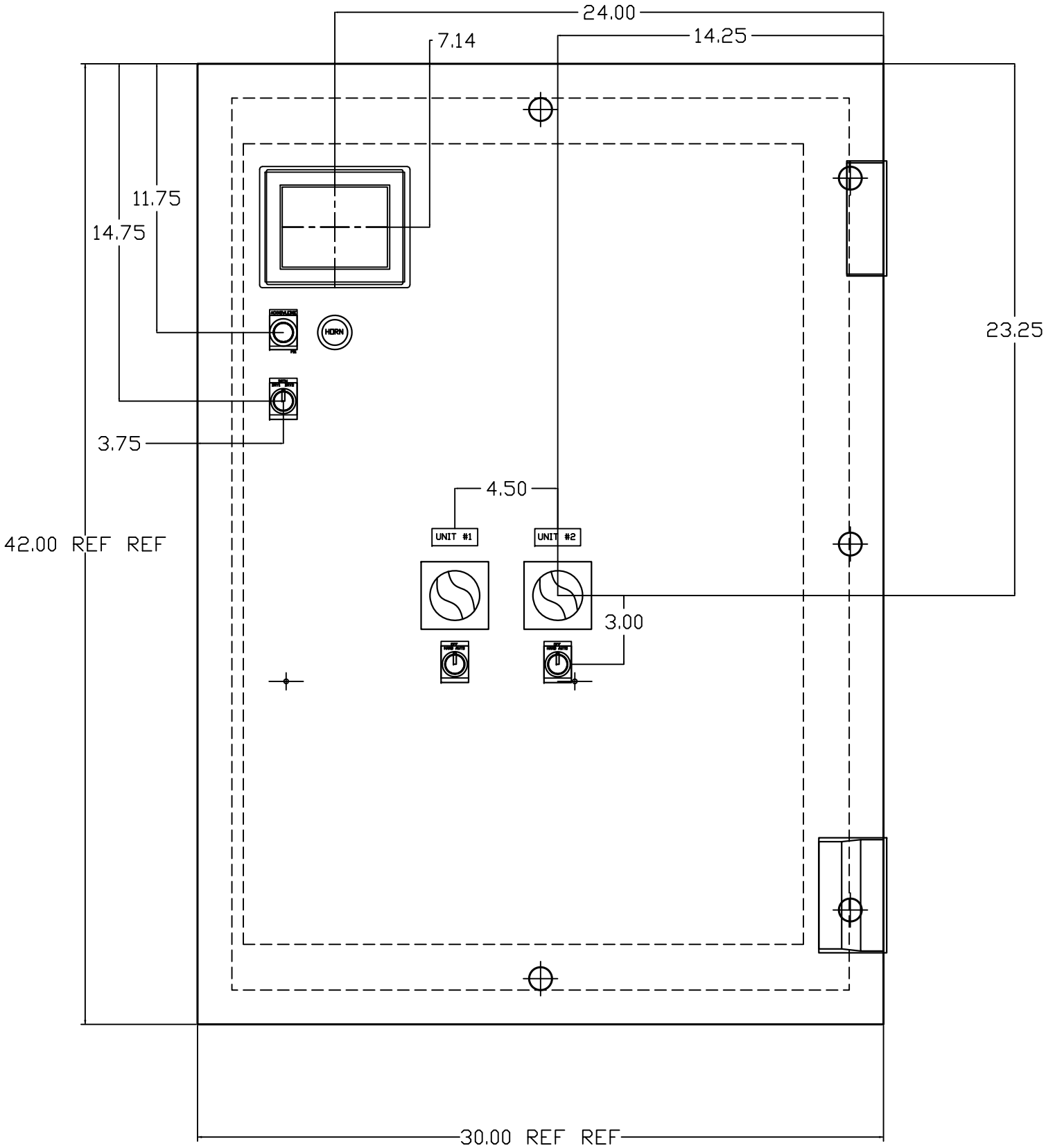
DWG. TYPE LAYOUT

DWG. NO. PBIA-269

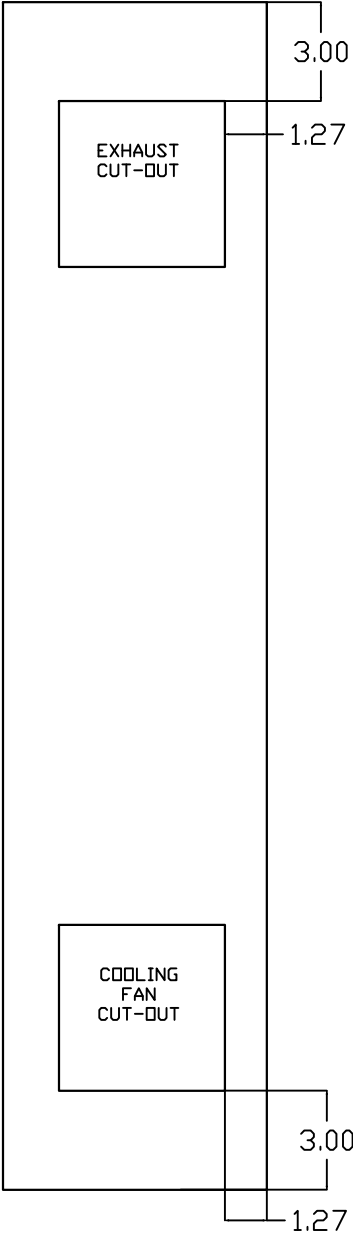
SHEET	SIZE
LA-2	B

PBIA-269

REV	REVISION	DATE	ECN	NAME	CHKD
B-1	RELEASE TO PRODUCTION	09/15/23	PXEC0521	KMD	AJL



RIGHT SIDE OF ENCLOSURE



OPTIONAL:

**POWEREX™**

CONFIDENTIAL DISCLOSURE:  
This drawing is the property of POWEREX, INC. of the SCOTT FETZER COMPANY and subject to return on demand. Its contents are confidential and must not be copied or submitted to outside parties for use or examination.

DRAWN BY	CHECKED BY	ENGINEERING APPROVAL
KMD	AJL	KMD
09/15/23	09/15/23	09/15/23

PANEL TYPE  
DUPLEX INST AIR COMP  
HMI, NFPA

DWG. TYPE LAYOUT

DWG. NO.  
PBIA-269

SHEET	SIZE
LB-1	B

