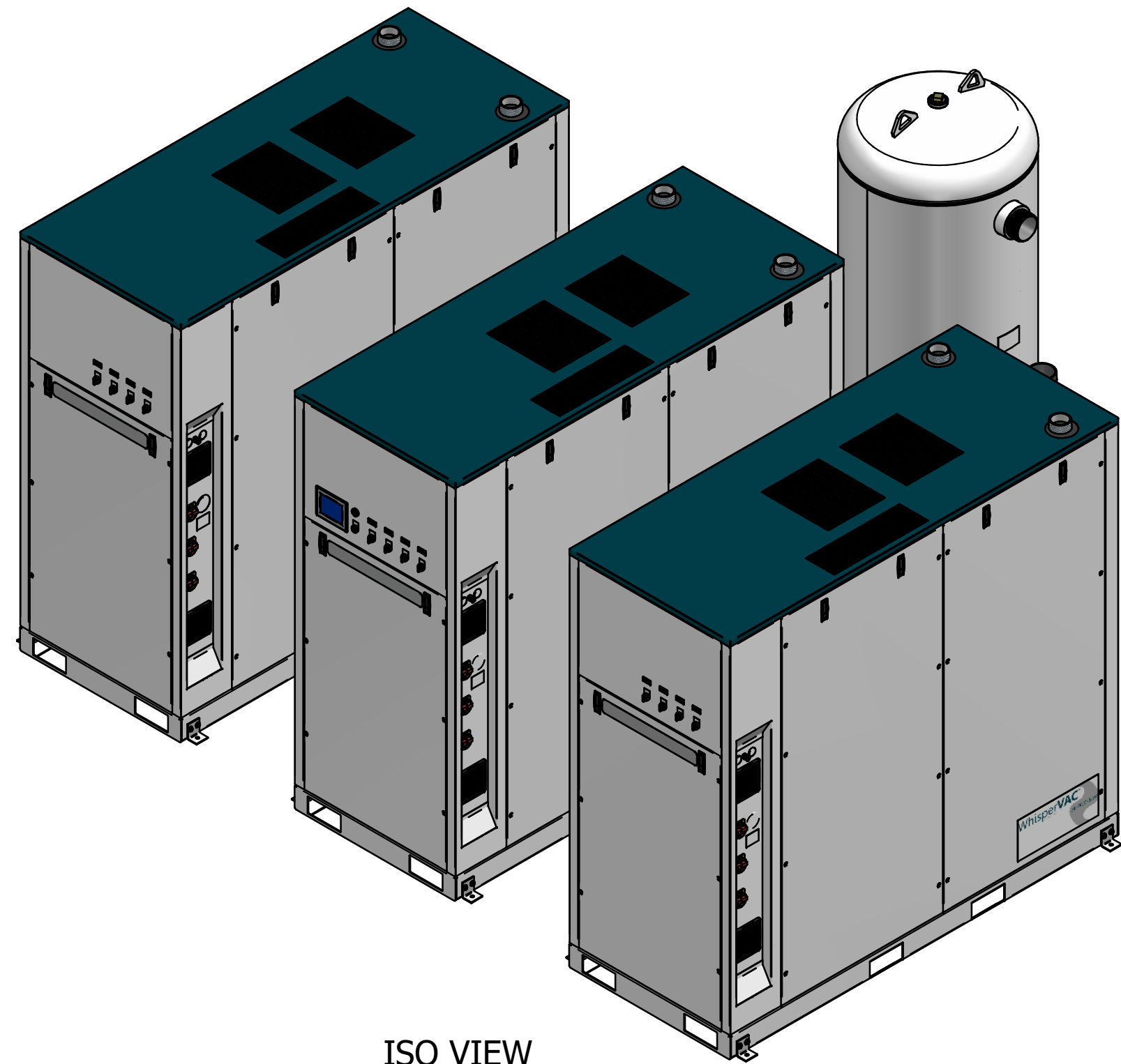
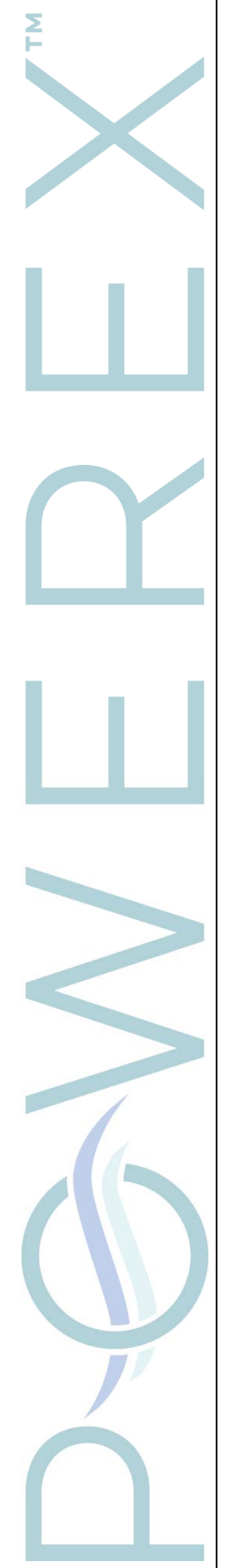


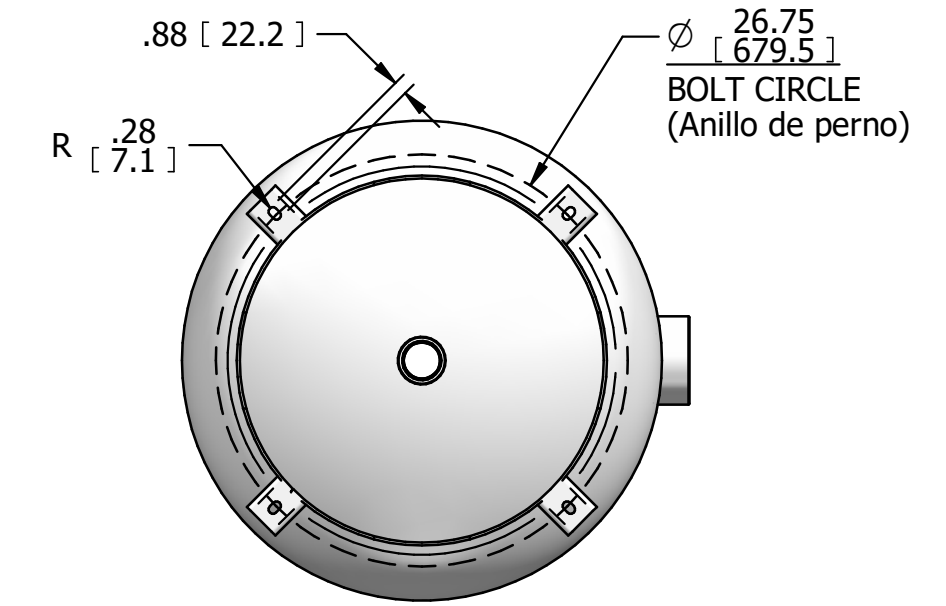
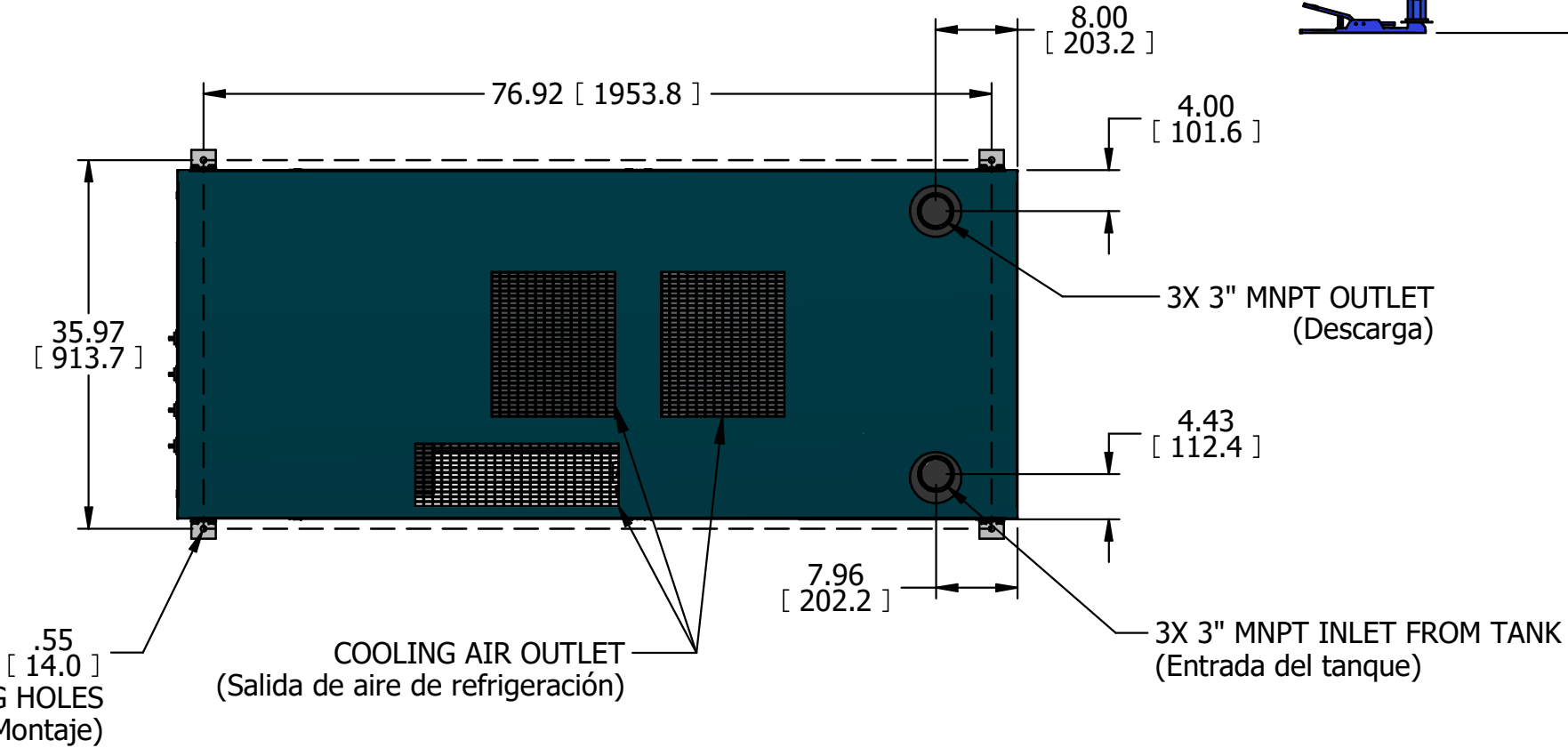
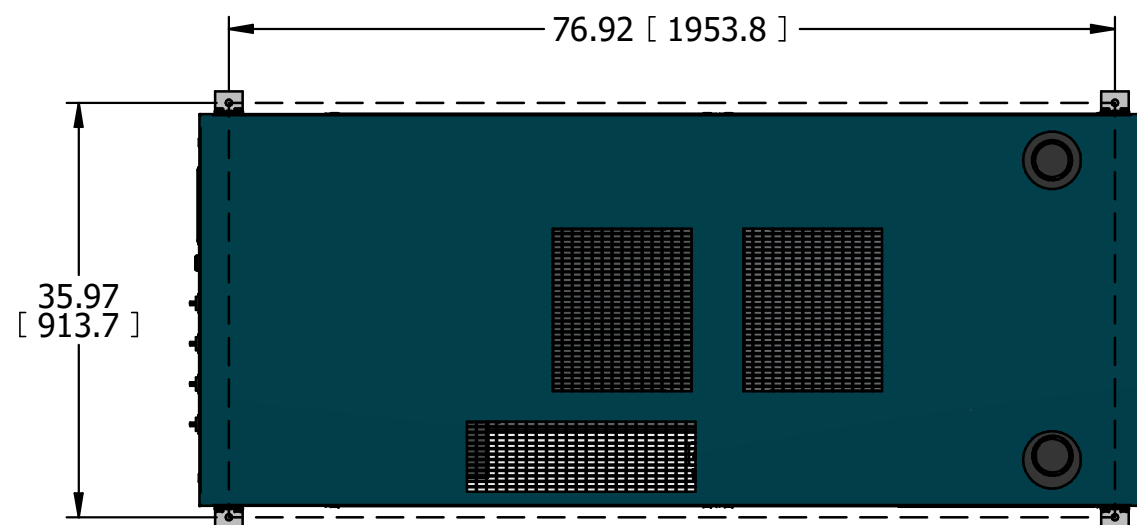
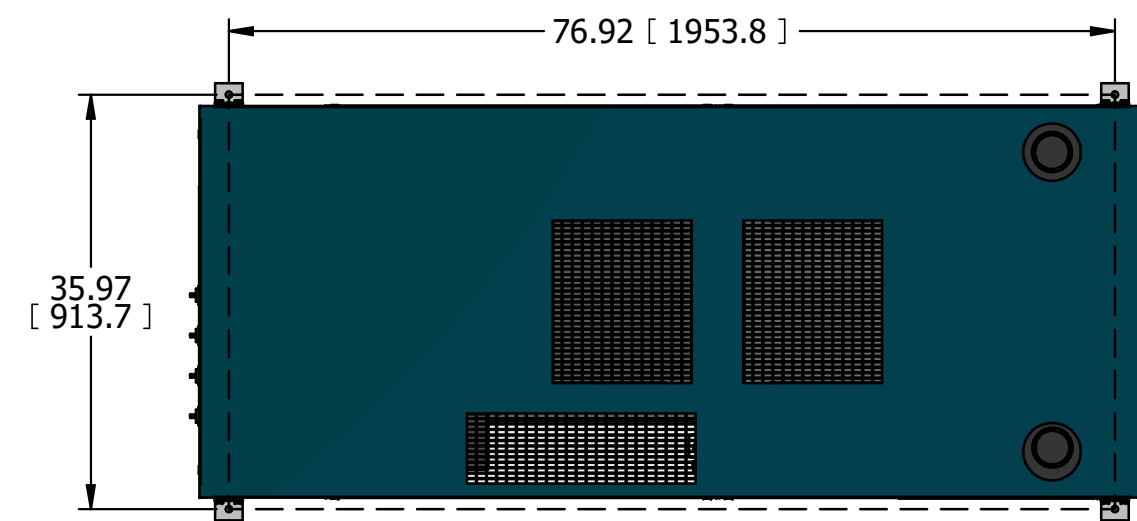
LVECH1505xx1

LAB VAC ENCL 15 HP HEXACLAW 200G TANK

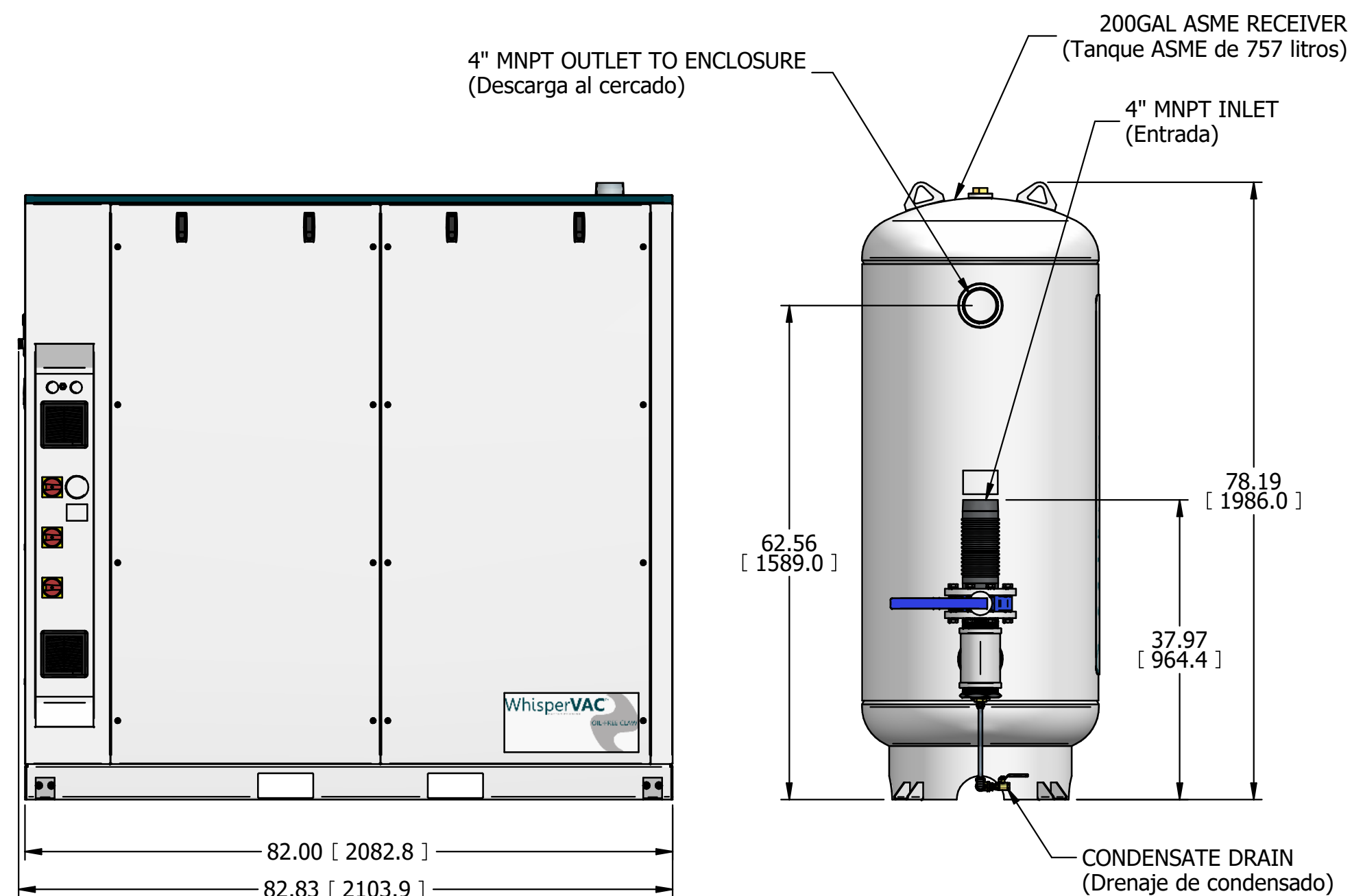
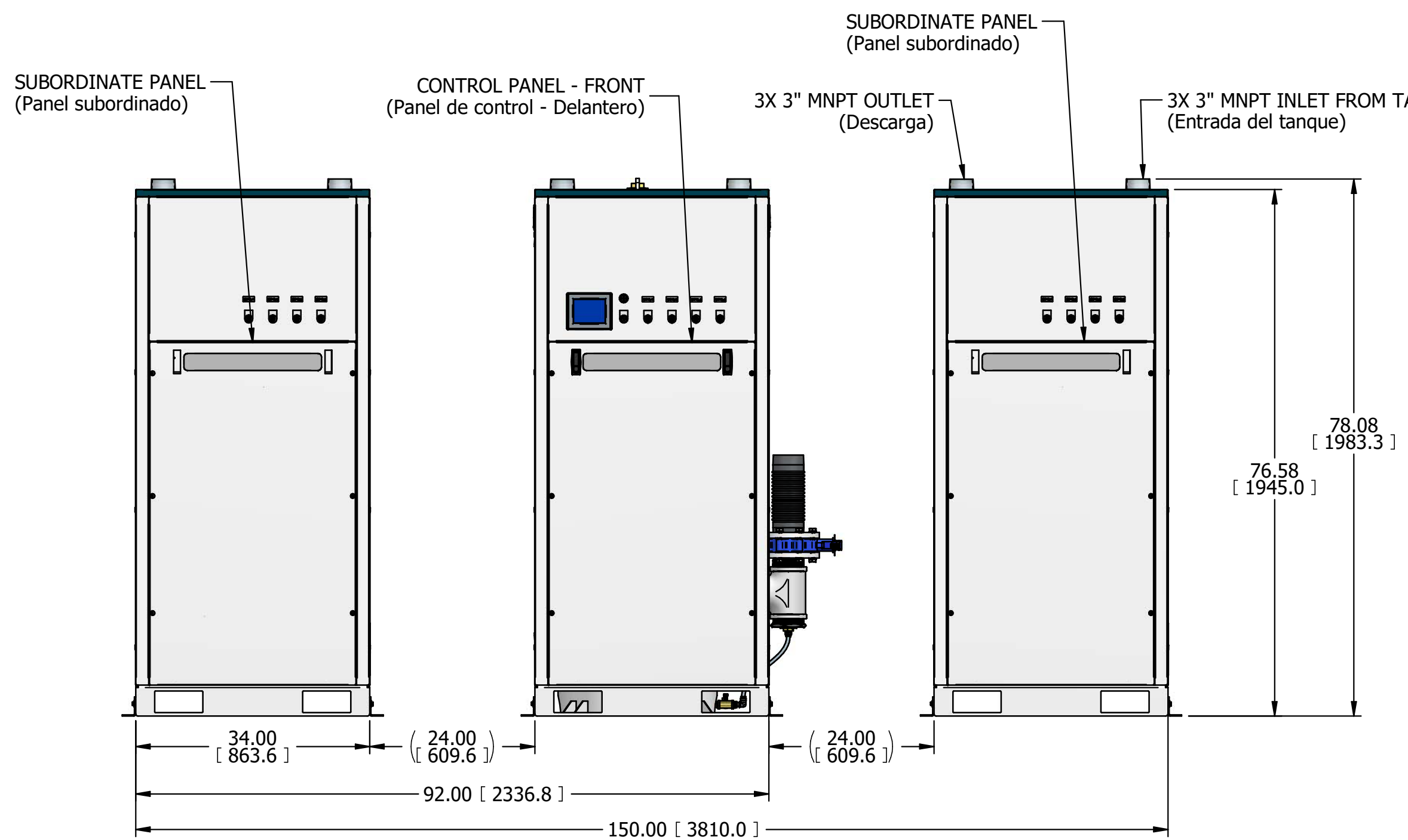
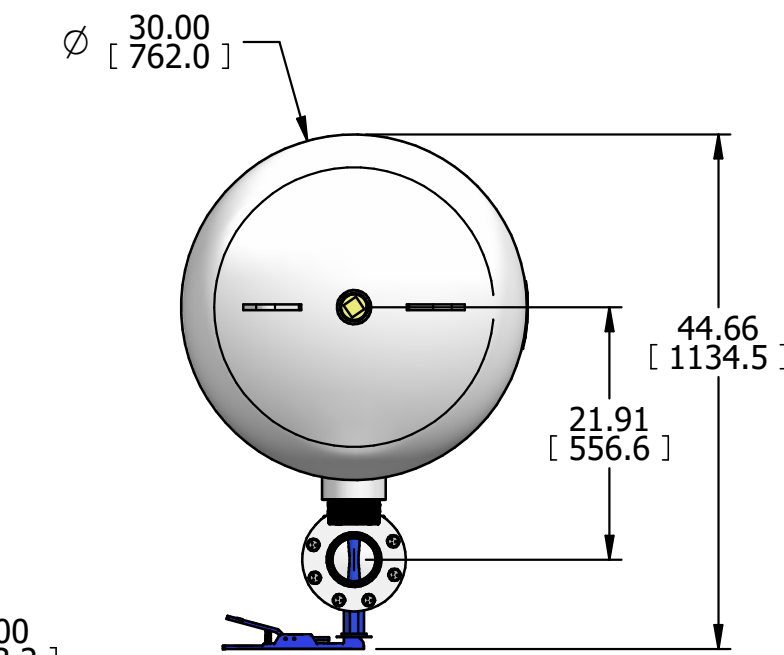
REVISION NOTES		
DESCRIPTION	ECN	PR/NOR
RELEASE TO PRODUCTION	PXEC0481	XXXXXXXX



ISO VIEW



4X FLOOR MOUNTING SLOTS
(Ranuras de Montaje)



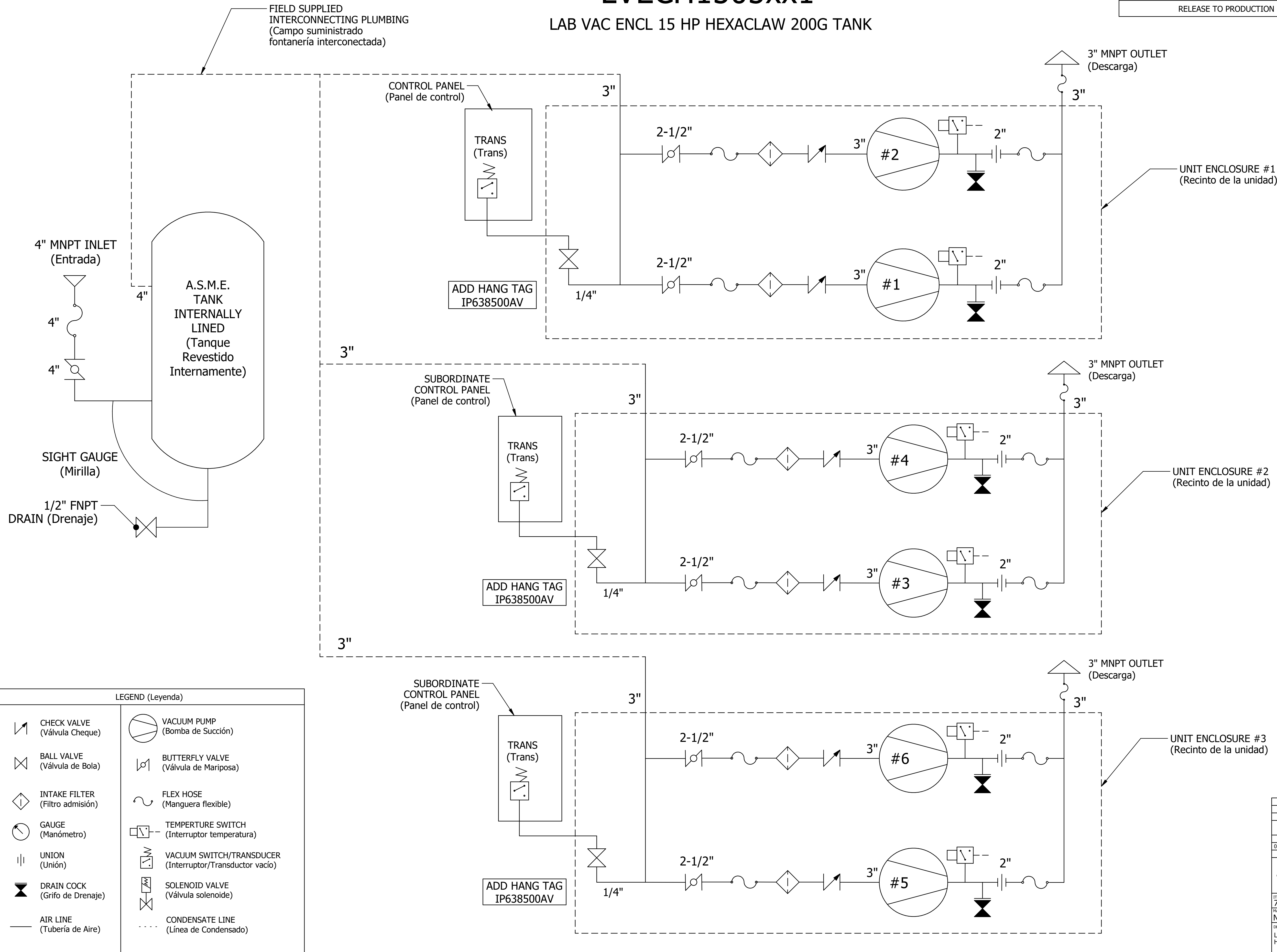
- NOTES:
- APPROXIMATE WEIGHT: 10564 LBS
 - A MINIMUM OF 24" CLEARANCE IS RECOMMENDED AROUND THE ENTIRE UNIT. CLEARANCE FOR CONTROL PANEL SHALL BE IN ACCORDANCE WITH OSHA/NEC REQUIREMENTS.
 - ALL PLUMBING FROM TANK OUTLET TO ENCLOSURE INLET(S) SHALL BE FIELD-SUPPLIED.
 - PESO APROXIMADO: 4791 kg
 - RECOMENDAMOS QUE EL ESPACIO LIBRE ALREDEDOR DEL SISTEMA DEBE SER COMO MÍNIMO 24" (600 mm). EL ESPACIO LIBRE PARA EL TABLERO DE CONTROL DEBERÁ ESTAR DE ACUERDO CON LOS REQUERIMIENTOS DE SEGURIDAD DE LA OSHA/NEC.
 - TODA LA PLOMERÍA DESDE LA DESCARGA DEL TANQUE HASTA LA(S) ENTRADA(S) DEL CERCADO DEBE SER SUMINISTRADA POR EL CLIENTE.

SYMBOL LEGEND		DRAWINGS TO CONFORM TO CURRENT REVISION OF THE FOLLOWING ANSI STANDARDS:	
		Y14.1 MULTIVIEW AND SECTIONAL VIEW DWGS	Y14.5 DIMENSIONING AND TOLERANCING
TOLERANCES, UNLESS OTHERWISE SPECIFIED	SOLID EDGE DRAWING	DO NOT SCALE DRAWING FOR DIMENSIONS	
0.XX ± .05			
0.XXX ± .005	INCH [mm]	SHEET 1 OF 2	SCALE 1:16.67
± .1			
CONFIDENTIAL DISCLOSURE This drawing is the property of POWEREX of the SCOTT FEZTER COMPANY and is subject to return on demand. Its contents are confidential and must not be copied or submitted to outside parties for use or examination.		AUTHOR	REVISION DATE
		bkiplinger	1/8/2024
ITEM NO: 752397		APPROVALS ON FILE IN PLM	
MATERIAL: N/A		POWEREX	
DESCRIPTION: LAV VAC ENCL15 HP HEXACLAW 200G TANK		DRAWING NUMBER: LVECH1505xx1	REVISION: A
		SIZE: A	D

LVECH1505xx1

LAB VAC ENCL 15 HP HEXACLAW 200G TANK

REVISION NOTES		
DESCRIPTION	ECN	PR/NOR
RELEASE TO PRODUCTION	PXEC0481	XXXXXXXX



POWEREX™

LEGEND (Leyenda)	
	CHECK VALVE (Válvula Cheque)
	BALL VALVE (Válvula de Bola)
	INTAKE FILTER (Filtro admisión)
	GAUGE (Manómetro)
	UNION (Unión)
	DRAIN COCK (Grifo de Drenaje)
	AIR LINE (Tubería de Aire)
	VACUUM PUMP (Bomba de Succión)
	BUTTERFLY VALVE (Válvula de Mariposa)
	FLEX HOSE (Manguera flexible)
	TEMPERATURE SWITCH (Interruptor temperatura)
	VACUUM SWITCH/TRANSDUCER (Interruptor/Transductor vacío)
	SOLENOID VALVE (Válvula solenoide)
	CONDENSATE LINE (Línea de Condensado)

SYMBOL	LEGEND	DRAWINGS TO CONFORM TO CURRENT REVISION OF THE FOLLOWING ANSI STANDARDS:		
		Y14.3 MULTI AND SECTIONAL VIEW DWGS		
		Y14.5 DIMENSIONING AND TOLERANCING		
TOLERANCES UNLESS OTHERWISE SPECIFIED		DO NOT SCALE DRAWING FOR DIMENSIONS		
0.XX ± .005	SOLID EDGE DRAWING	SHEET 2 OF 2		SCALE 1:1
0.XXX ± .005	INCH [mm]			
± 1				
CONFIDENTIAL DISCLOSURE		AUTHOR	REVISION DATE	APPROVALS ON FILE IN PLM
This drawing is the property of POWEREX of the SCOTT FEZER COMPANY and is subject to return on demand. Its contents are confidential and must not be copied or submitted to outside parties for use or examination.		bkiplinger	1/8/2024	
ITEM NO:	752397	POWEREX™		
MATERIAL:	N/A	150 PRODUCTION DRIVE, HARRISON OH 45030 (888) 769-7979		
DESCRIPTION	LAV VAC ENCL15 HP HEXACLAW 200G TANK	DRAWING NUMBER	LVECH1505xx1	REVISION SIZE
				A D