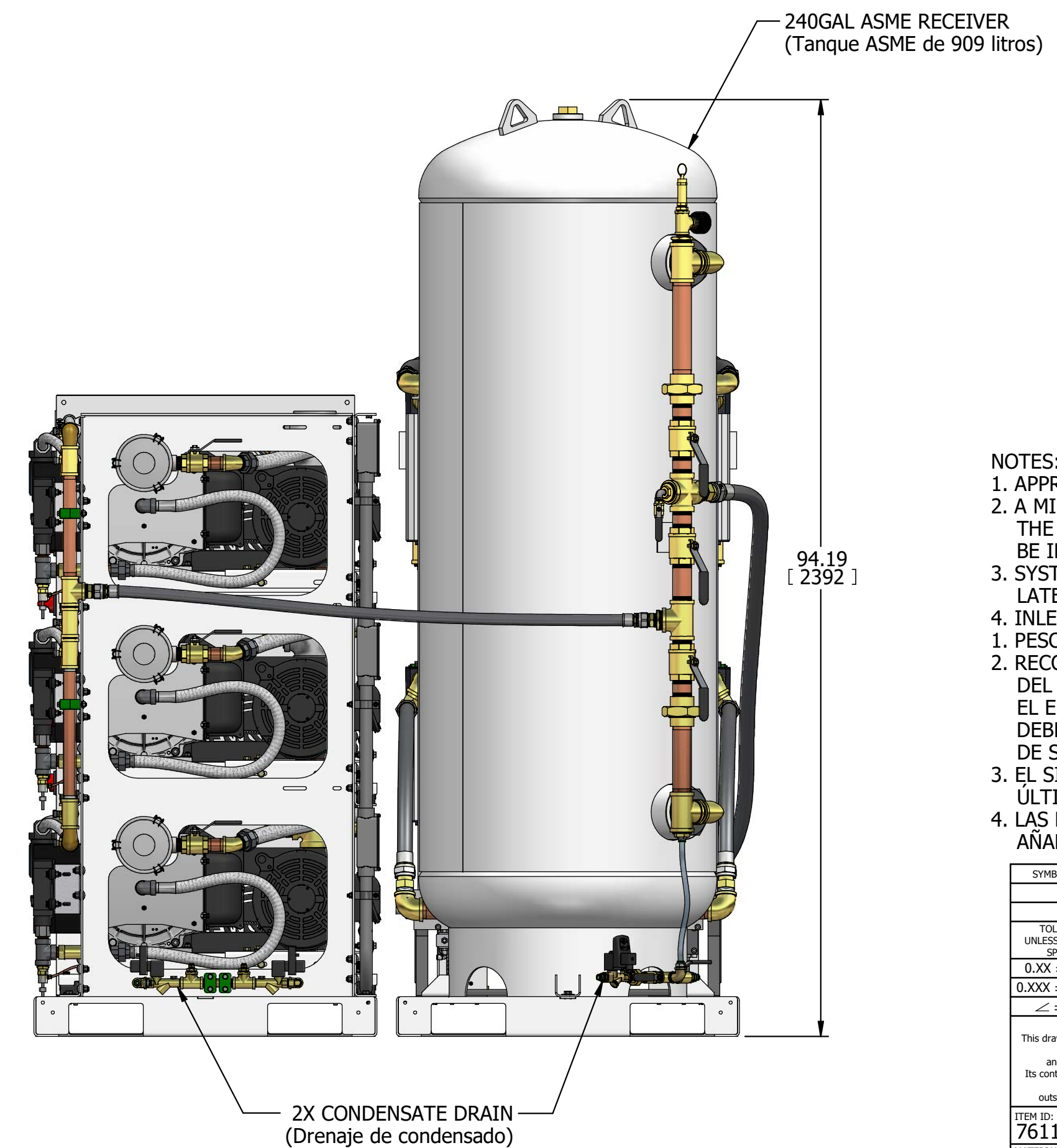
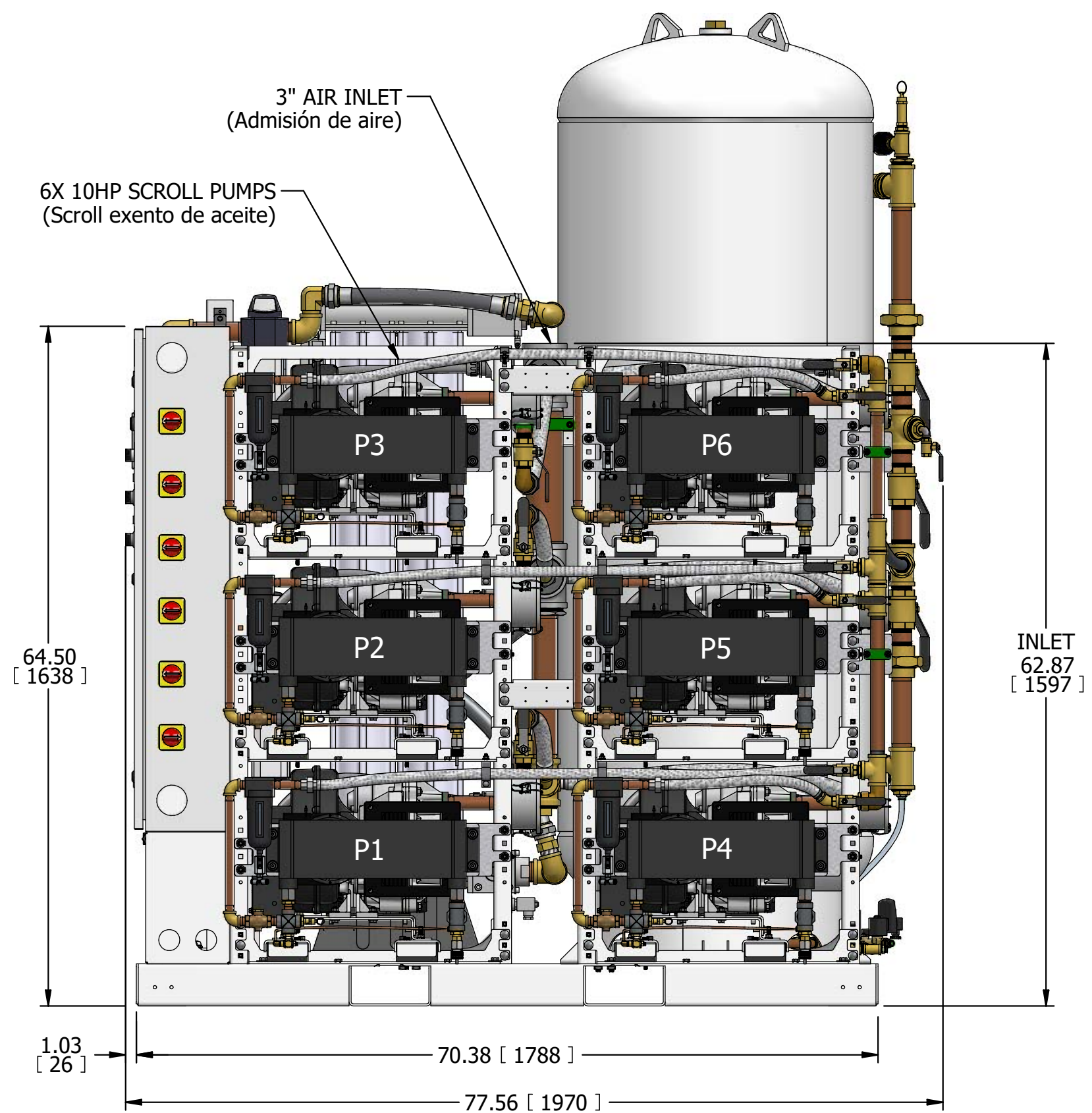
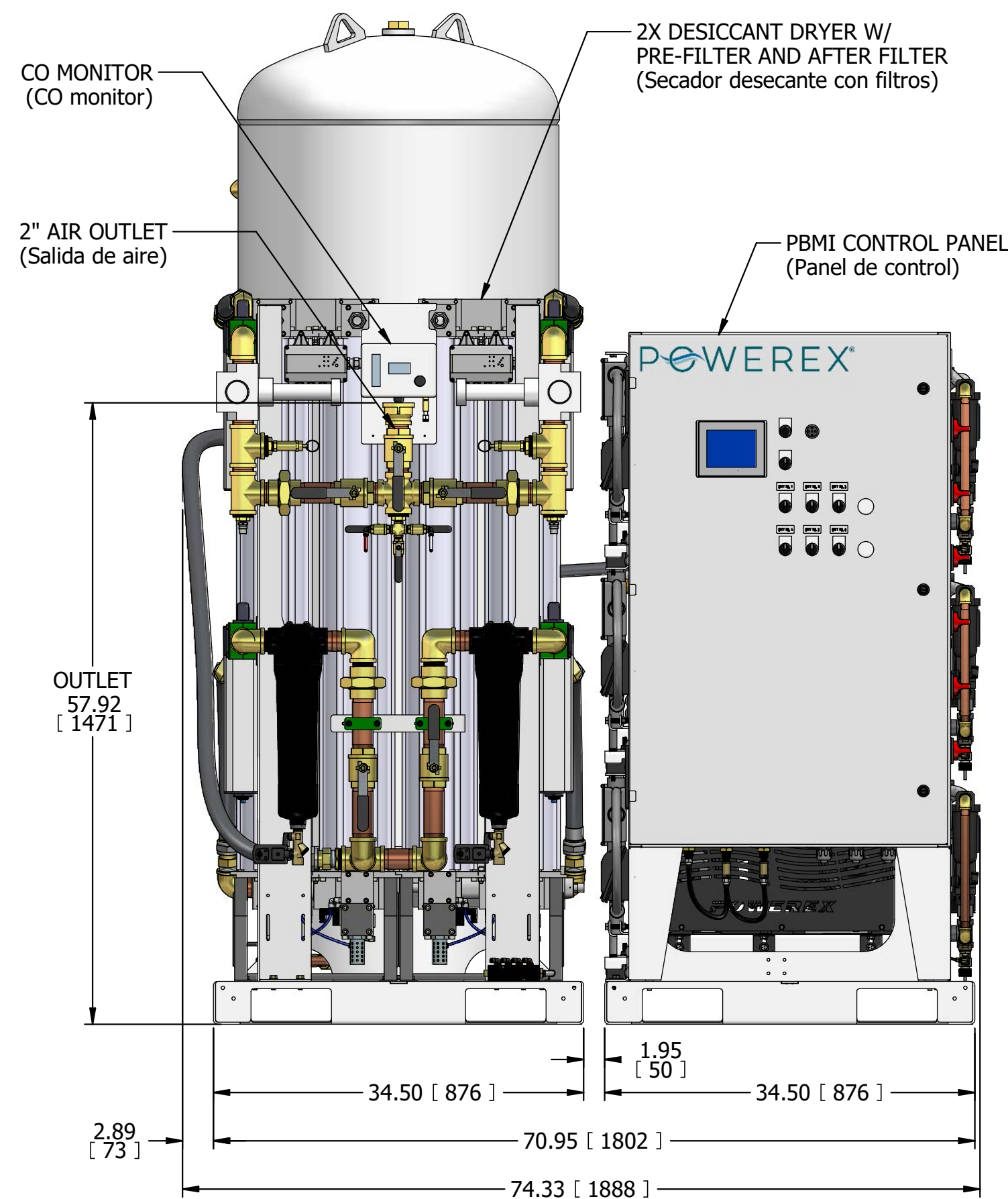
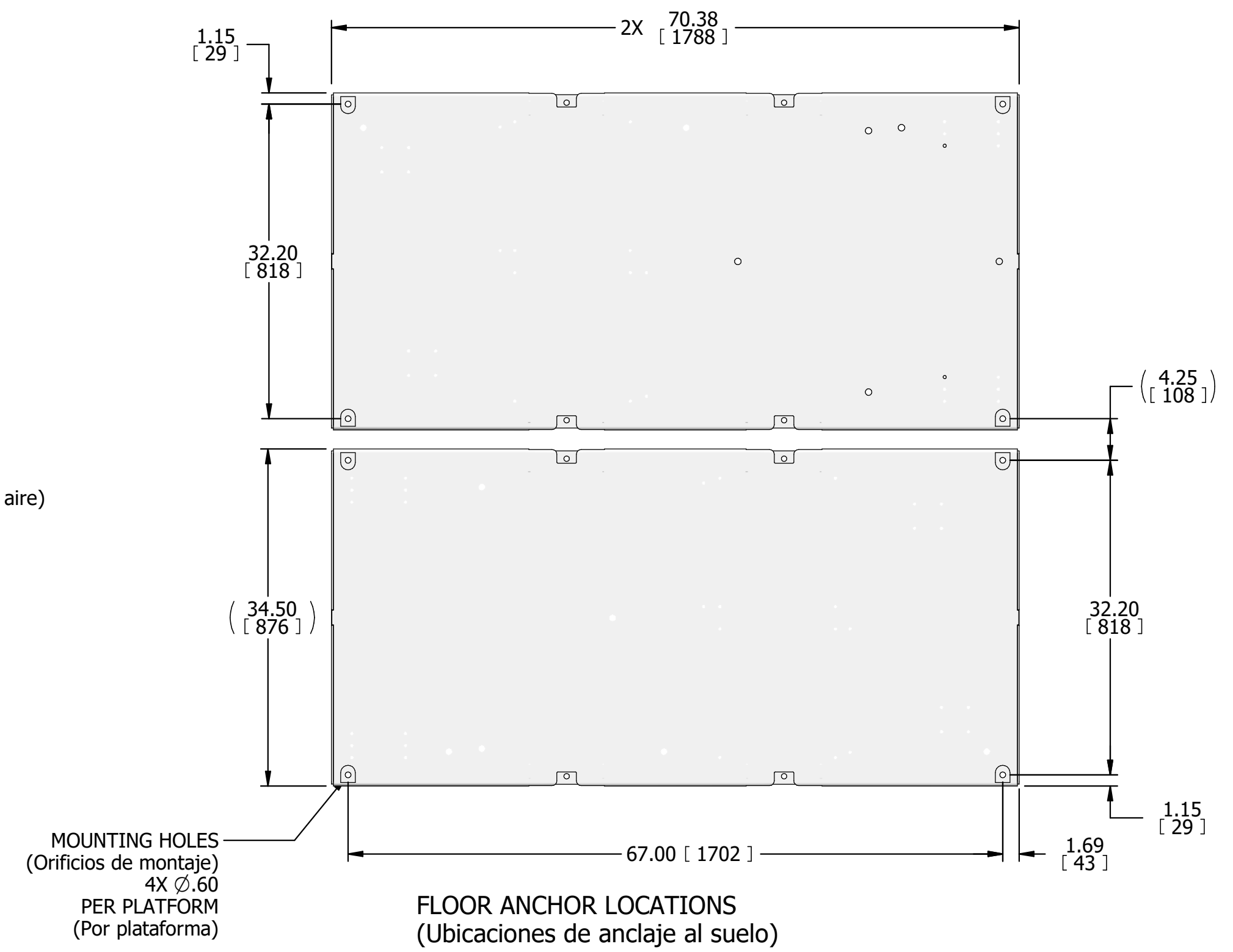
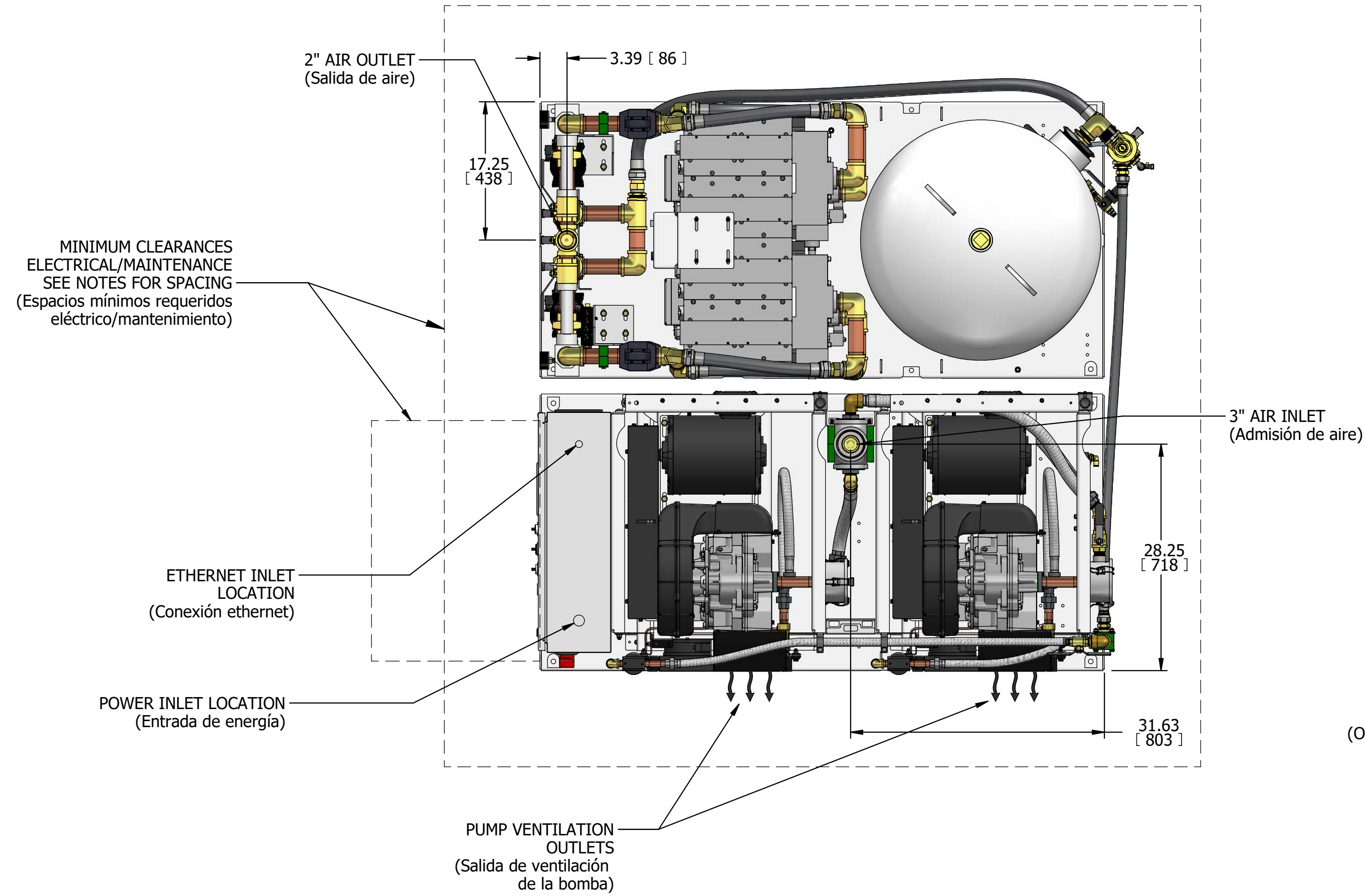


MSH10C6xP5

10HP MED OPEN SCROLL HEXAPLEX 240GAL DUPLEX DESICCANT

REVISION NOTES		ECN
DESCRIPTION		PXEC0318
RELEASE TO PRODUCTION		



- NOTES:
- APPROXIMATE WEIGHT: 4841 LBS
 - A MINIMUM OF 24" CLEARANCE IS RECOMMENDED AROUND THE ENTIRE UNIT. CLEARANCE FOR CONTROL PANEL SHALL BE IN ACCORDANCE WITH OSHA/NEC REQUIREMENTS.
 - SYSTEM DESIGNED IN COMPLIANCE WITH U.S. NFPA '99, LATEST EDITION.
 - INLET AND OUTLET FLEX HOSES ADD 12" TO CONNECTIONS
1. PESO APROXIMADO: 2196 kg
2. RECOMENDAMOS QUE EL ESPACIO LIBRE ALREDEDOR DEL SISTEMA DEBE SER COMO MÍNIMO 24" (600 mm). EL ESPACIO LIBRE PARA EL TABLERO DE CONTROL DEBERÁ ESTAR DE ACUERDO CON LOS REQUERIMIENTOS DE SEGURIDAD DE LA OSHA/NEC.
3. EL SISTEMA ESTÁ DISEÑADO DE ACUERDO CON LA ÚLTIMA EDICIÓN DE LA NFPA 99.
4. LAS MANGUERAS FLEXIBLES DE ENTRADA Y SALIDA AÑADEN 12" A LAS CONEXIONES

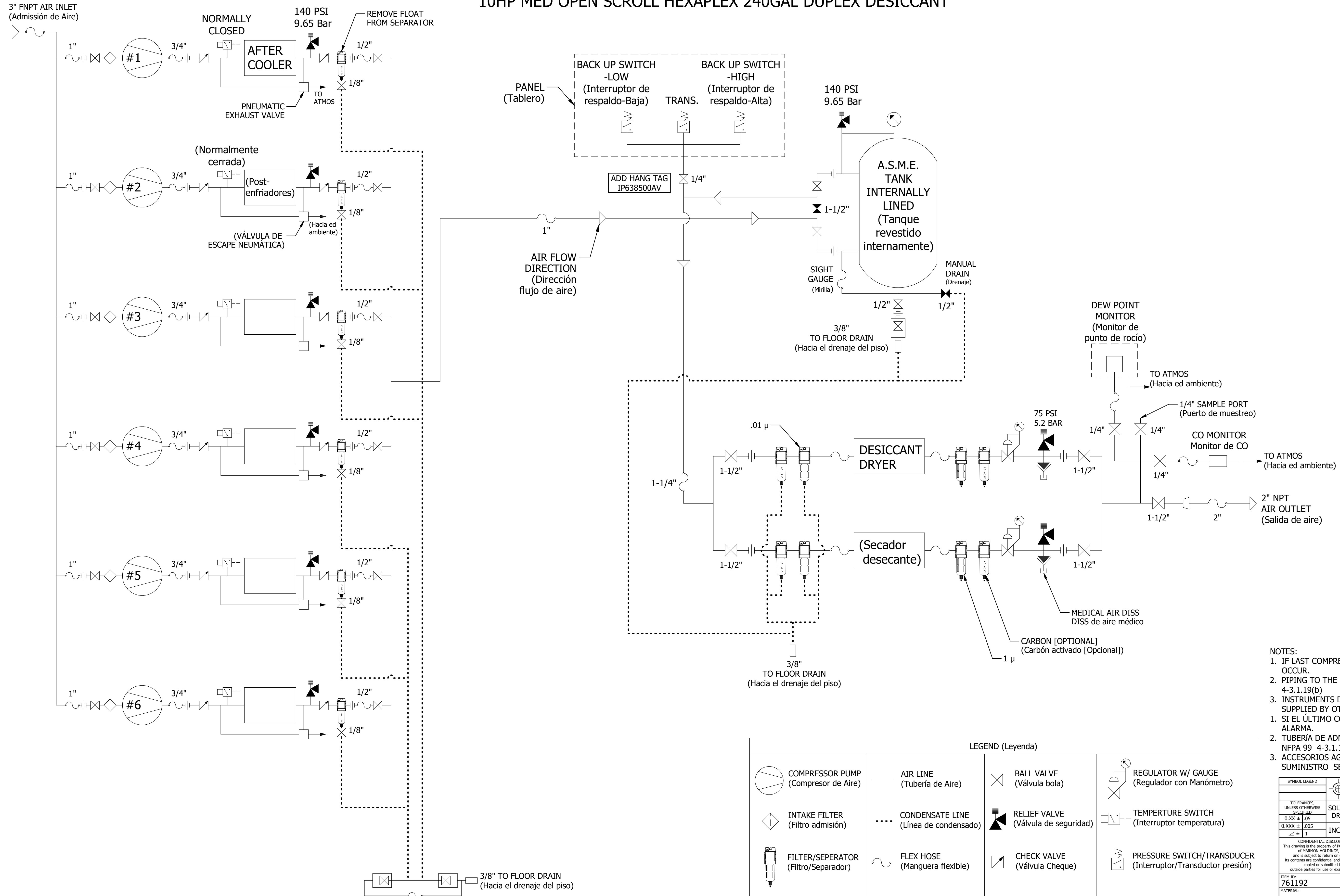
SYMBOL LEGEND		DRAWINGS TO CONFORM TO CURRENT REVISION OF THE FOLLOWING ANSI STANDARDS:	
TOLERANCES, UNLESS OTHERWISE SPECIFIED	SOLID EDGE DRAWING	DO NOT SCALE DRAWING FOR DIMENSIONS	
0.XXX ± .005	INCH [mm]	SHEET 1 OF 2	SCALE 1:1
CONFIDENTIAL DISCLOSURE This drawing is the property of POWEREX INC. of HARRISON HOLDINGS, INC. and is subject to return on demand. Its contents are confidential and must not be copied or submitted to outside parties for use or examination.		AUTHOR	REVISION DATE
ITEM NO: 761192		Kumar, Sreehari	07/22/25
MATERIAL: ---		APPROVALS ON FILE IN PLM	
DESCRIPTION		DRAWING NUMBER	REVISION
10HP MED OPEN SCROLL HEXAPLEX 240GAL DUPLEX DESICCANT		MSH10C6xP5	B D

POWEREX

MSH10C6xP5

10HP MED OPEN SCROLL HEXAPLEX 240GAL DUPLEX DESICCANT

REVISION NOTES	
DESCRIPTION	ECN
RELEASE TO PRODUCTION	PXEC0318



- NOTES:
- IF LAST COMPRESSOR PLEX IS ENERGIZED ALARM WILL OCCUR.
 - PIPING TO THE INLET BY OTHERS AND TO BE PER NFPA99 4-3.1.19(b)
 - INSTRUMENTS DOWN STREAM OF SOURCE VALVE TO BE SUPPLIED BY OTHERS.
 - SI EL ÚLTIMO COMPRESOR SE ACTIVA, SE PRODUCIRÁ UNA ALARMA.
 - TUBERÍA DE ADMISION POR OTROS Y CUMPLIR CON LA NFPA 99 4-3.1.19 (b).
 - ACCESORIOS AGUAS-ABAJO DE LA VALVULA DE CORTE DE SUMINISTRO SERAN INSTALADOS POR OTROS.

LEGEND (Leyenda)			
	COMPRESSOR PUMP (Compresor de Aire)		AIR LINE (Tubería de Aire)
	INTAKE FILTER (Filtro admisión)		CONDENSATE LINE (Línea de condensado)
	FILTER/SEPARATOR (Filtro/Separador)		FLEX HOSE (Manguera flexible)
	GAUGE (Manómetro)		UNION (Unión)
	BALL VALVE (Válvula bola)		RELIEF VALVE (Válvula de seguridad)
	REGULATOR W/ GAUGE (Regulador con Manómetro)		CHECK VALVE (Válvula Cheque)
	TEMPERTURE SWITCH (Interruptor temperatura)		DEMAND VALVE (Válvula de demanda)
	PRESSURE SWITCH/TRANSDUCER (Interruptor/Transductor presión)		ELECTRIC AUTO DRAIN (Electroválvula de Drenaje)

SYMBOL LEGEND		DRAWINGS TO CONFORM TO CURRENT REVISION OF THE FOLLOWING AISC STANDARDS:	
	SOLID EDGE DRAWING	Y14.3 MULTI AND SECTIONAL VIEW DWGS	DO NOT SCALE DRAWING FOR DIMENSIONS
	INCH [mm]	Y14.5 DIMENSIONING AND TOLERANCING	
<small> TOLERANCES, UNLESS OTHERWISE SPECIFIED: 0.XXX ± .005 0.XXX ± .005 ± .1 </small>		<small> CONFIDENTIAL DISCLOSURE This drawing is the property of POWEREX INC. of HARRISON HOLDINGS, INC. and is subject to return on demand. Its contents are confidential and must not be copied or submitted to outside parties for use or examination. </small>	
<small> SHEET 2 OF 2 SCALE 1:1 </small>		<small> APPROVALS ON FILE IN PLM </small>	
<small> AUTHOR: Kumar, Sreehari REVISION DATE: 07/22/25 </small>			
<small> ITEM NO: 761192 MATERIAL: --- DESCRIPTION: 10HP MED OPEN SCROLL HEXAPLEX 240GAL DUPLEX DESICCANT </small>		<small> DRAWING NUMBER: MSH10C6xP5 REVISION: B SIZE: D </small>	