

Item Number: OLET-EXTENSION		
Item	Quantity	Description
1	1	Frame Extension Adapter
2	1	Index Pin Extension (Including Set Screw)
3	1	1/16" Hex Key Tool
4	1	Barrel Extension Adapter (Including Set Screws)
5	3	3" Screw
6	2	Toothed Washers
7	2	Nut
8	2	7/16" Screw

Step 1: Assemble Medical Gas Outlet Frame with Frame Extension Ad

- Using 7/16" screws, toothed washers, and nuts, attach trim piece from medical gas outlet to the Frame Extension Adapter as pictured in Figures 1 & 2. Tighten as shown in Figure 3.

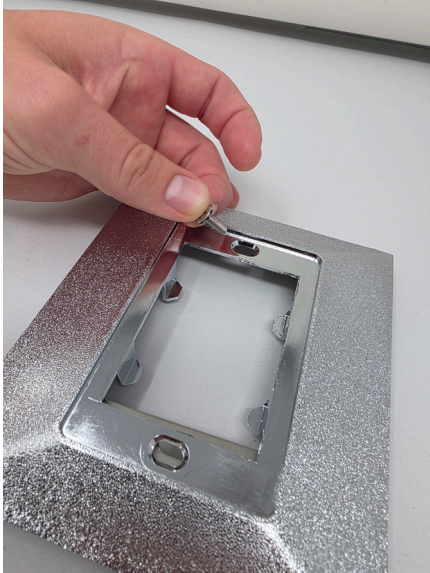


Figure 1

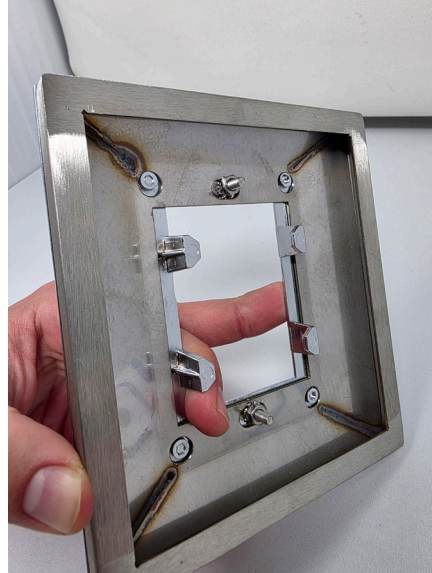


Figure 2

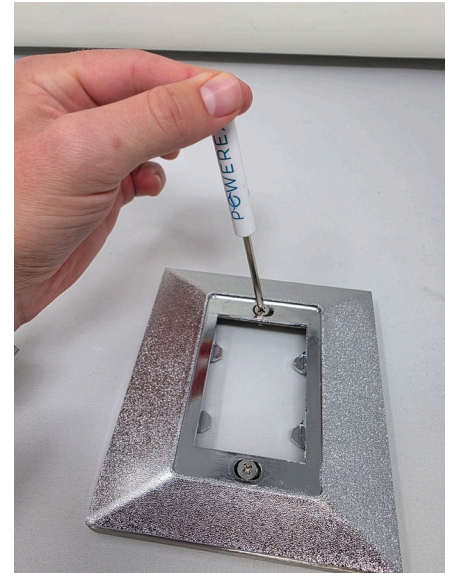


Figure 3

Step 2: Attach Barrel Extension Adapter to Medical Gas Outlet Barrel

- Slide Barrel Extension Adapter onto barrel of medical gas outlet as pictured in Figure 4. Tighten set screws with provided hex tool as shown in Figure 5.



Figure 4

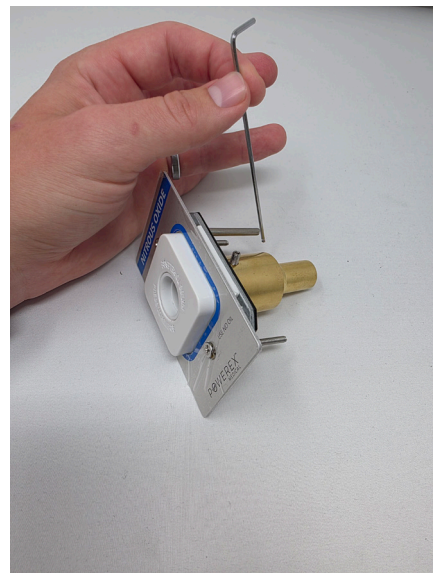


Figure 5

Step 3: Attach Pin Index Adapter to Medical Gas Outlet Pin

- Slide Pin Index Extension Adapter onto pin of medical gas outlet as pictured in Figure 6. Tighten set screws with provided hex tool as shown in Figure 7.



Figure 6



Figure 7

Step 4: Replace Medical Gas Outlet Latch Screws with 3" Screws

- Replace the existing latch screws with 3" extended screws.



Figure 8

Step 5: Install Assembled Extended Outlet into Outlet Back Body (Rough-In)

- Place the assembled extended medical gas outlet trim into the outlet's back body. Refer to Figure 9.



Figure 9



Finished Product Example