

| REV | REVISION | DATE | ECN | NAME | CHKD |
|-----|-----------------------|---------|----------|------|------|
| B-1 | RELEASE TO PRODUCTION | 4/25/25 | PXEC0614 | SEK | JRD |

OPTIONAL:

POWEREX™

CONFIDENTIAL DISCLOSURE:
This drawing is the property of POWEREX, INC. of
Marron Specialty Products and is subject to
return on demand. Its contents are confidential
and must not be copied or submitted to outside
parties for use or examination.

| DRAWN BY | CHECKED BY | ENGINEERING APPROVAL |
|-------------|---------------|-------------------------|
| SEK | JRD | JRD |
| 4/25/25 | 4/25/25 | 4/25/25 |

PANEL TYPE

DUPLEX MEDICAL COMP

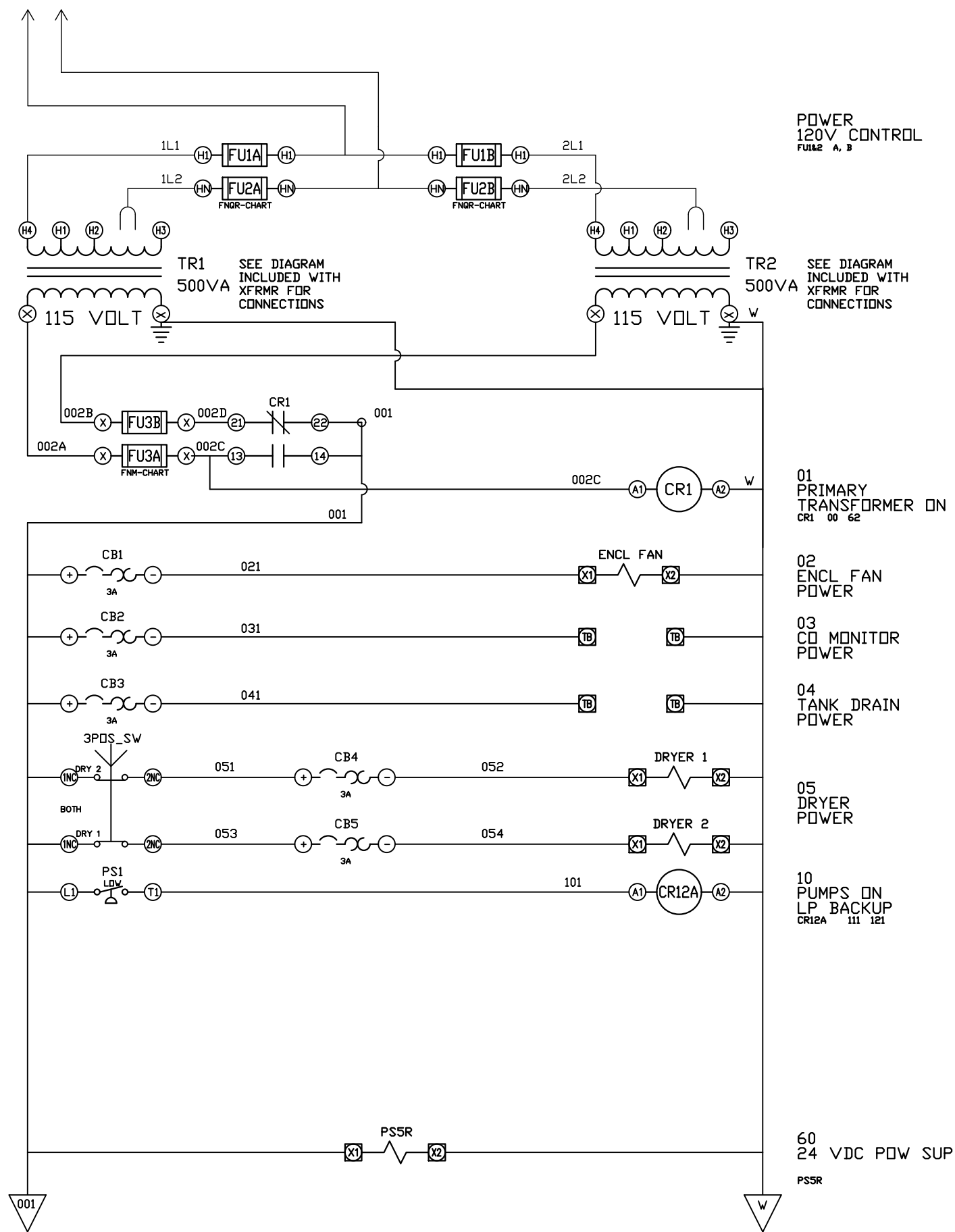
HMI, BACNET, WEBSVR, NFPA, SOFT START. PLEX ISO

DWG. TYPE WIRING

DWG. NO.

PXMI-AS216

| SHEET | SIZE |
|-------|------|
| W-1 | B |



| REV | REVISION | DATE | ECN | NAME | CHKD |
|-----|-----------------------|---------|----------|------|------|
| B-1 | RELEASE TO PRODUCTION | 4/25/25 | PXEC0614 | SEK | JRD |

OPTIONAL:

POWEREX™

CONFIDENTIAL DISCLOSURE:
This drawing is the property of POWEREX, INC. of
Marmion Specialty Products and is subject to
return on demand. Its contents are confidential
and must not be copied or submitted to outside
parties for use or examination.

| DRAWN BY | CHECKED BY | ENGINEERING APPROVAL |
|-------------|---------------|-------------------------|
| SEK | JRD | JRD |
| 4/25/25 | 4/25/25 | 4/25/25 |

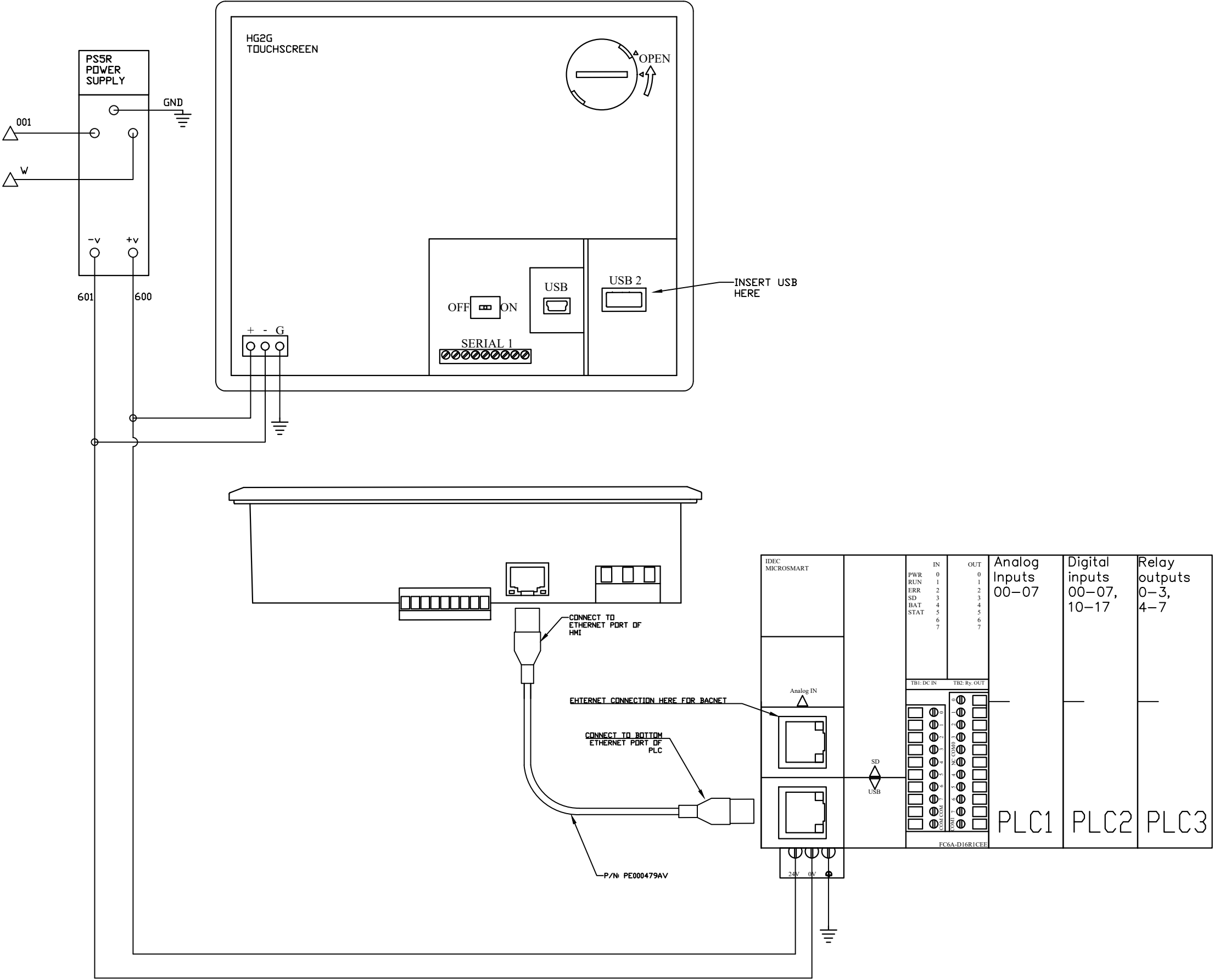
PANEL TYPE
DUPLEX MEDICAL COMP
HMI, BACNET, WEBSVR, NFPA, SOFT START. PLEX ISO

DWG. TYPE WIRING

DWG. NO.
PXMI-AS216

| SHEET | SIZE |
|-------|------|
| W-2 | B |

| REV | REVISION | DATE | ECN | NAME | CHKD |
|-----|-----------------------|---------|----------|------|------|
| B-1 | RELEASE TO PRODUCTION | 4/25/25 | PXEC0614 | SEK | JRD |



OPTIONAL:

POWEREX™

CONFIDENTIAL DISCLOSURE:
This drawing is the property of POWEREX, INC. of
Marion Specialty Products and is subject to
return on demand. Its contents are confidential
and must not be copied or submitted to outside
parties for use or examination.

| | | |
|-------------|---------------|-------------------------|
| DRAWN BY | CHECKED BY | ENGINEERING APPROVAL |
| SEK | JRD | JRD |
| 4/25/25 | 4/25/25 | 4/25/25 |

PANEL TYPE

DUPLEX MEDICAL COMP

HMI, BACNET, WEBSVR, NFPA, SOFT START. PLEX ISO

DWG. TYPE WIRING

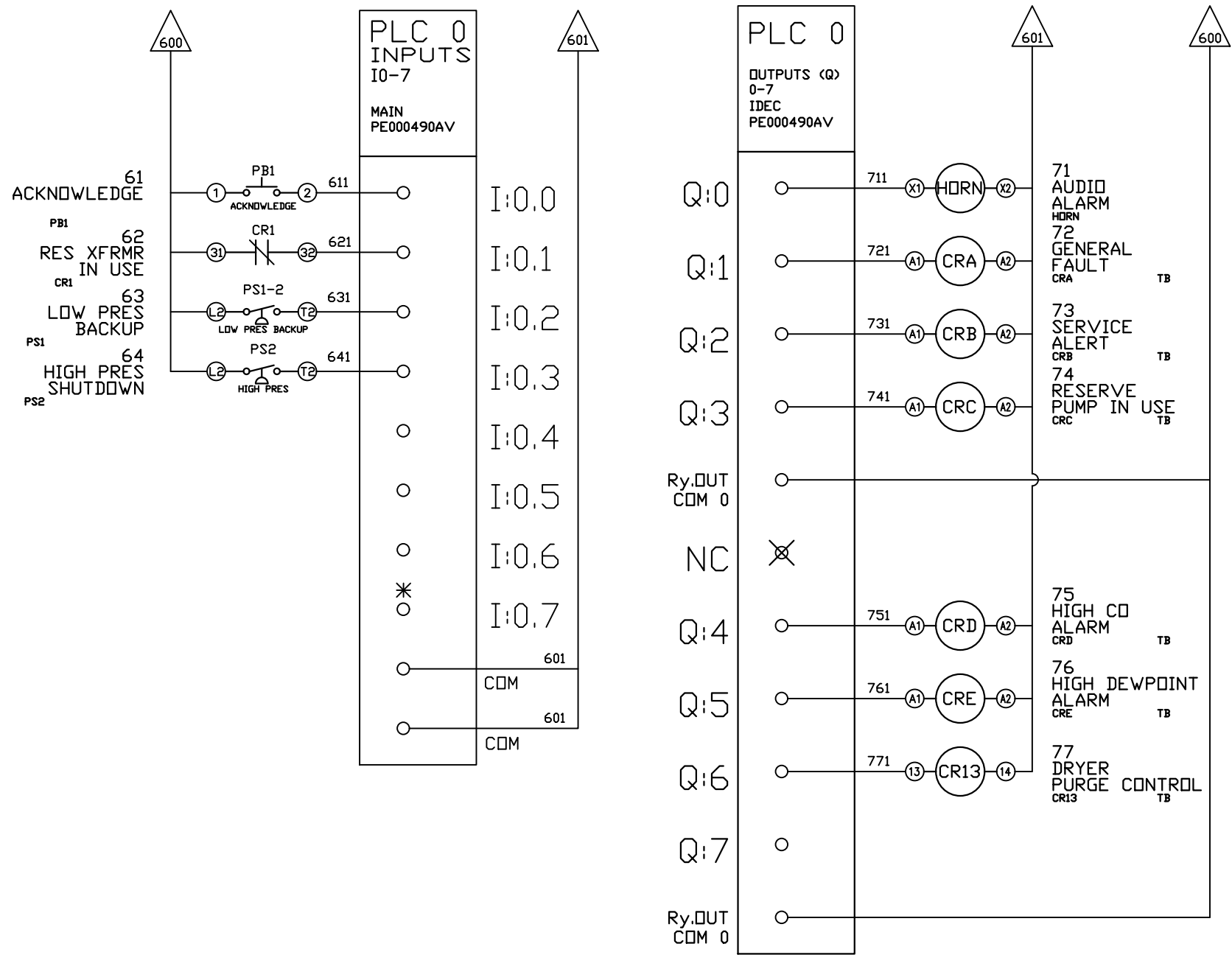
DWG. NO.

PXMI-AS216

| | |
|-------|------|
| SHEET | SIZE |
| W-4 | B |

PXMI-AS216

| REV | REVISION | DATE | ECN | NAME | CHKD |
|-----|-----------------------|---------|----------|------|------|
| B-1 | RELEASE TO PRODUCTION | 4/25/25 | PXEC0614 | SEK | JRD |



*FACTORY TEST JUMPER LOCATION

OPTIONAL:

CONFIDENTIAL DISCLOSURE:
This drawing is the property of POWEREX, INC. of
Marion Specialty Products and is subject to
return on demand. Its contents are confidential
and must not be copied or submitted to outside
parties for use or examination.

| | | |
|----------|------------|----------------------|
| DRAWN BY | CHECKED BY | ENGINEERING APPROVAL |
| SEK | JRD | JRD |
| 4/25/25 | 4/25/25 | 4/25/25 |

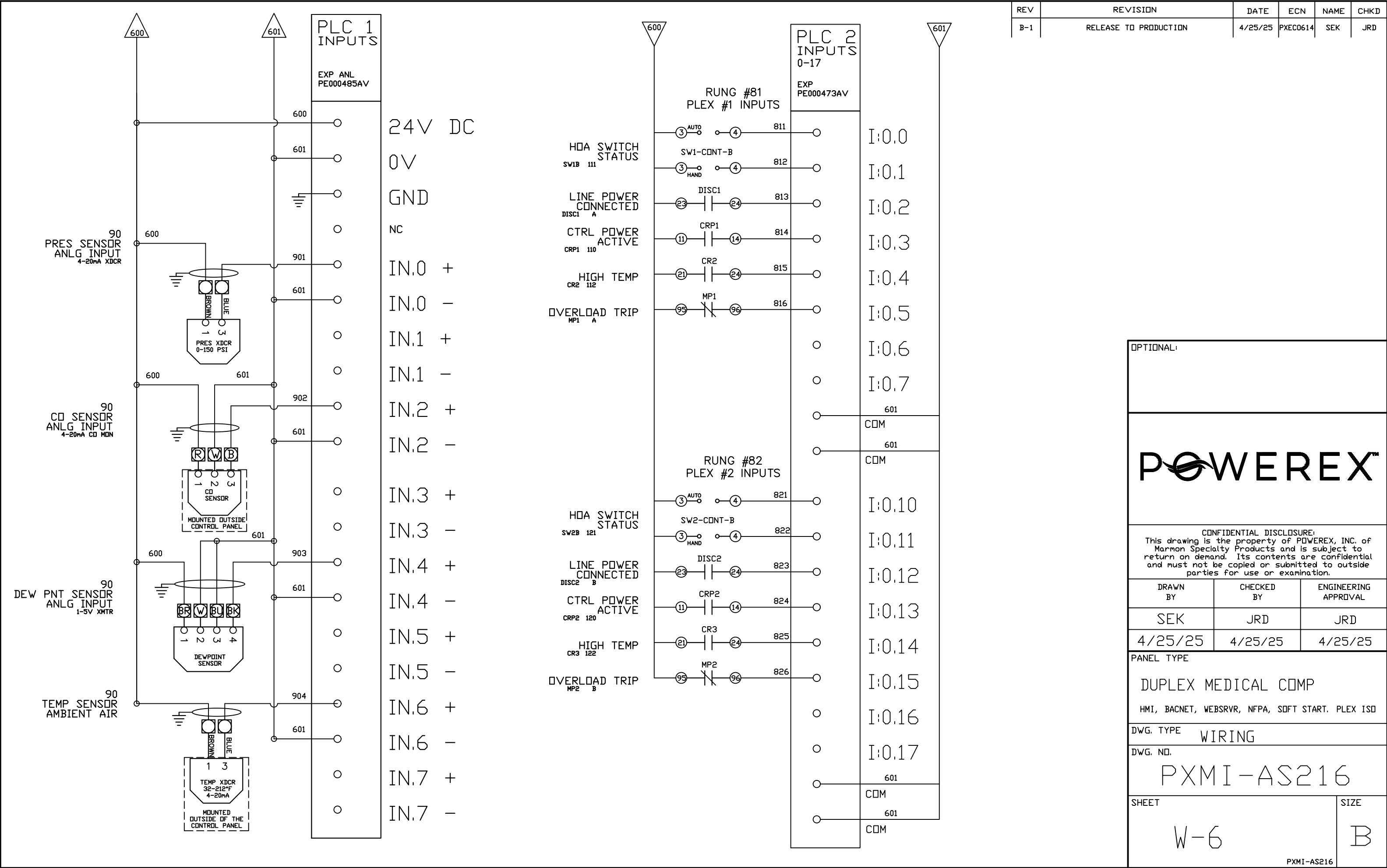
PANEL TYPE
DUPLEX MEDICAL COMP
HMI, BACNET, WEBSVR, NFPA, SOFT START. PLEX ISO

DWG. TYPE
WIRING

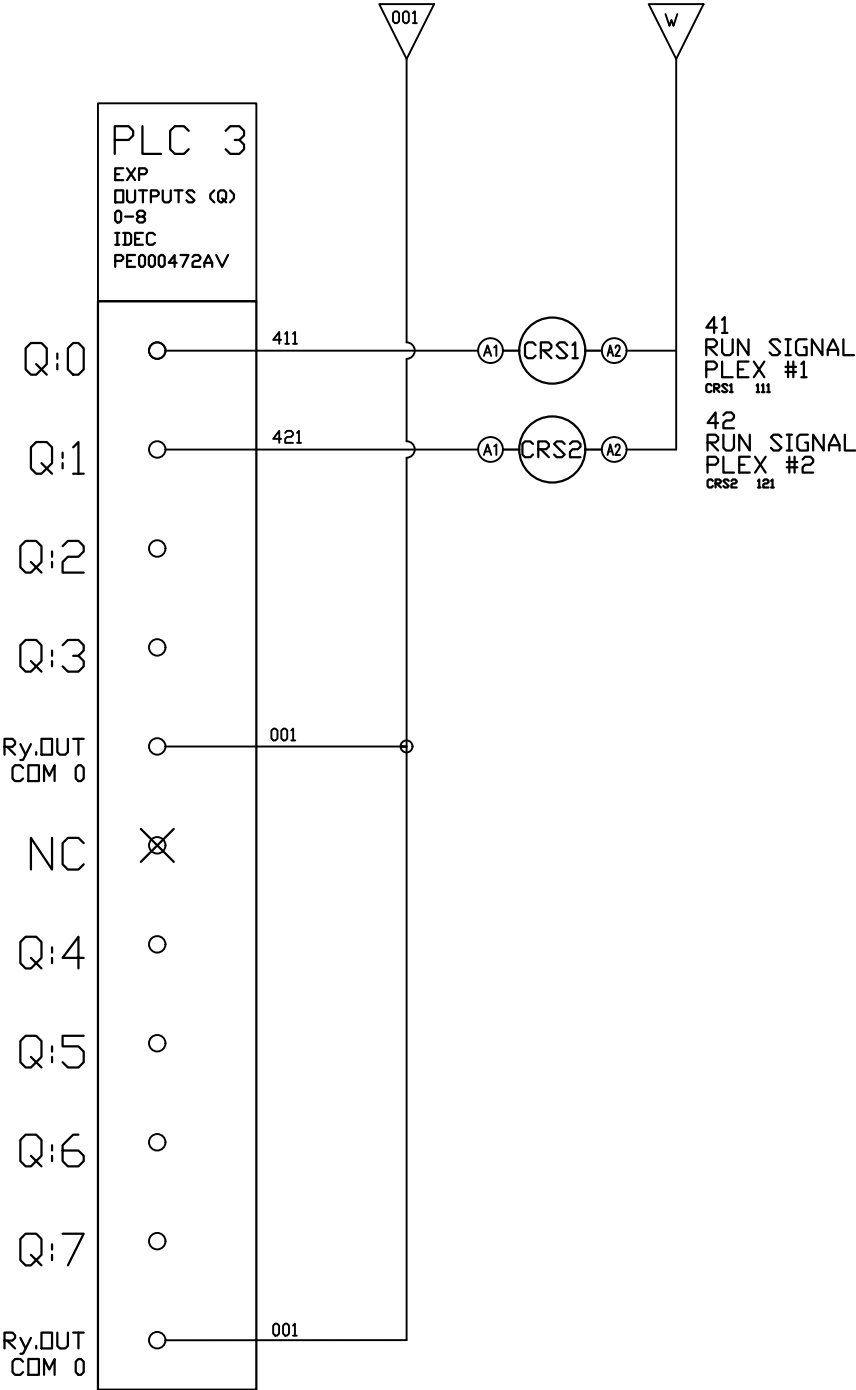
DWG. NO.
PXMI-AS216

| | |
|--------------|-----------|
| SHEET W-5 | SIZE B |
|--------------|-----------|

PXMI-AS216



| REV | REVISION | DATE | ECN | NAME | CHKD |
|-----|-----------------------|---------|----------|------|------|
| B-1 | RELEASE TO PRODUCTION | 4/25/25 | PXEC0614 | SEK | JRD |



OPTIONAL:

CONFIDENTIAL DISCLOSURE:

This drawing is the property of POWEREX, INC. of Marnon Specialty Products and is subject to return on demand. Its contents are confidential and must not be copied or submitted to outside parties for use or examination.

| | | |
|----------|------------|----------------------|
| DRAWN BY | CHECKED BY | ENGINEERING APPROVAL |
| SEK | JRD | JRD |
| 4/25/25 | 4/25/25 | 4/25/25 |

PANEL TYPE

DUPLEX MEDICAL COMP

HMI, BACNET, WEBSVR, NFPA, SOFT START. PLEX ISO

DWG. TYPE WIRING

DWG. NO. PXMI-AS216

| | |
|-------|------|
| SHEET | SIZE |
| W-7 | B |

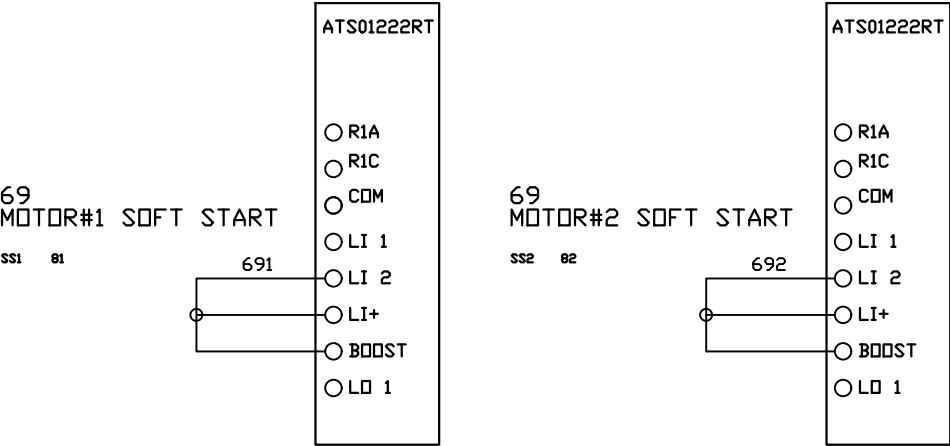
PXMI-AS216

SET START TIME TO 3-SEC (B)


SET INITIAL VOLT SETTING TO 67% (D)

SET STOP TIME TO 60 SEC (C)

| REV | REVISION | DATE | ECN | NAME | CHKD |
|-----|-----------------------|---------|----------|------|------|
| B-1 | RELEASE TO PRODUCTION | 4/25/25 | PXEC0614 | SEK | JRD |



OPTIONAL:



CONFIDENTIAL DISCLOSURE:
This drawing is the property of POWEREX, INC. of
Marnon Specialty Products and is subject to
return on demand. Its contents are confidential
and must not be copied or submitted to outside
parties for use or examination.

| | | |
|-------------|---------------|-------------------------|
| DRAWN BY | CHECKED BY | ENGINEERING APPROVAL |
| SEK | JRD | JRD |
| 4/25/25 | 4/25/25 | 4/25/25 |

PANEL TYPE

DUPLEX MEDICAL COMP

HMI, BACNET, WEBSVR, NFPA, SOFT START. PLEX ISO

DWG. TYPE
WIRING

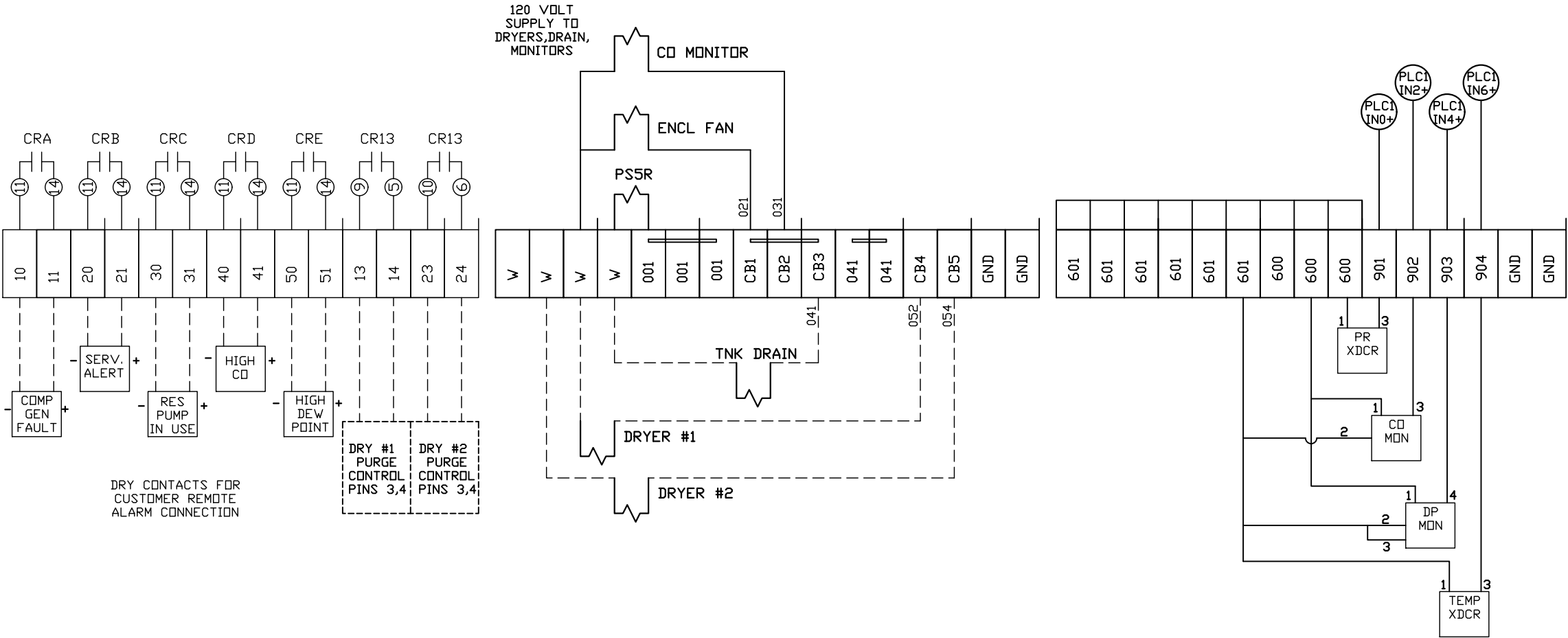
DWG. NO.
PXMI-AS216

| | |
|------------------|---------------|
| SHEET W-8 | SIZE B |
|------------------|---------------|

PXMI-AS216

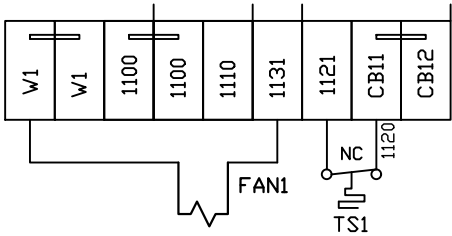
| REV | REVISION | DATE | ECN | NAME | CHKD |
|-----|-----------------------|---------|----------|------|------|
| B-1 | RELEASE TO PRODUCTION | 4/25/25 | PXEC0614 | SEK | JRD |

TERMINAL BLOCKS

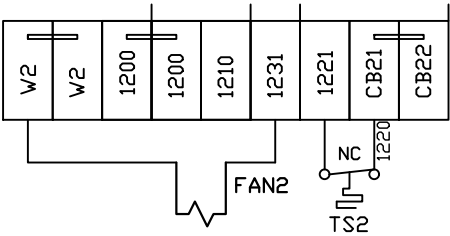


DRY CONTACTS FOR CUSTOMER REMOTE ALARM CONNECTION

PLEX #1 CONNECTIONS



PLEX #2 CONNECTIONS



FIELD WIRING NOTES:

- PANEL GROUND MUST BE CONNECTED TO EARTH GROUND
- TRANSFORMER IS SIZED FOR LOADS SHOWN ON DRAWING ONLY.
- FIELD WIRING INDICATED BY -----, WIRE TO BE COPPER RATED AT 75° C.
- ALL ALARM DRY CONTACTS ARE CLOSED FOR NORMAL OPERATION AND OPEN IN ALARM.
- DRY CONTACT RATING: 30V DC/2A (resistive load, inductive load L/R = 7 ms)
- USE CAT-5 CABLE W/RJ45 CONNECTOR FOR ETHERNET CONNECTION TO COMMUNICATION NETWORK OR BAS SYSTEM

OPTIONAL:

POWEREX™

CONFIDENTIAL DISCLOSURE:
This drawing is the property of POWEREX, INC. of Marmon Specialty Products and is subject to return on demand. Its contents are confidential and must not be copied or submitted to outside parties for use or examination.

| DRAWN BY | CHECKED BY | ENGINEERING APPROVAL |
|----------|------------|----------------------|
| SEK | JRD | JRD |
| 4/25/25 | 4/25/25 | 4/25/25 |

PANEL TYPE
DUPLX MEDICAL COMP
HMI, BACNET, WEBSVR, NFPA, SOFT START. PLEX ISO

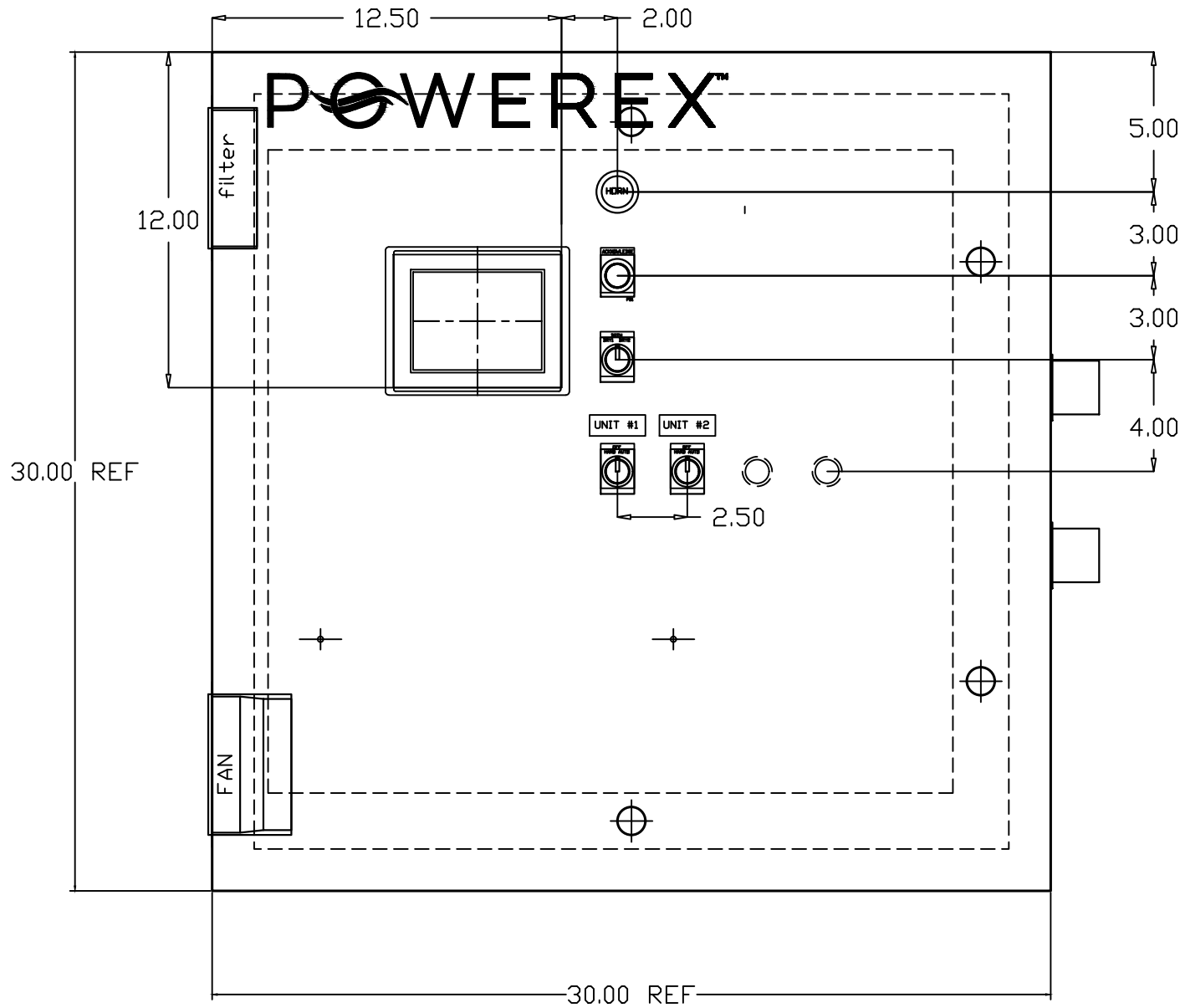
DWG. TYPE WIRING

DWG. NO. PXMI-AS216

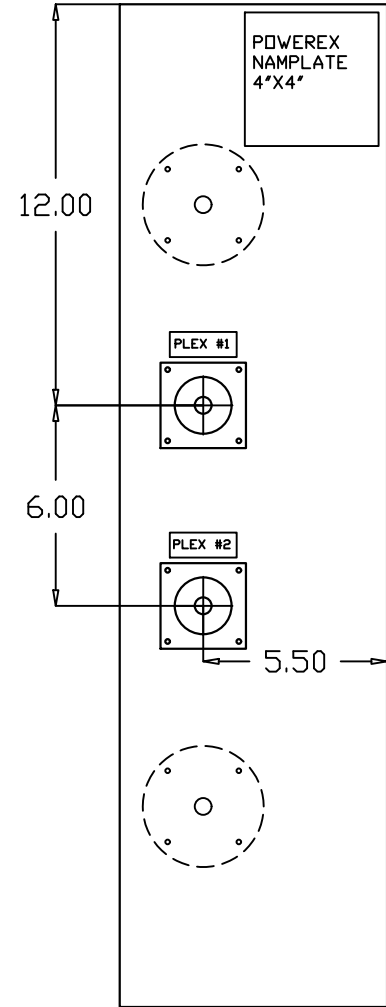
| SHEET | SIZE |
|-------|------|
| W-9 | B |

| REV | REVISION | DATE | ECN | NAME | CHKD |
|-----|-----------------------|---------|----------|------|------|
| B-1 | RELEASE TO PRODUCTION | 4/25/25 | PXEC0614 | SEK | JRD |

LEFT SIDE OF ENCLOSURE



RIGHT SIDE OF ENCLOSURE



OPTIONAL:

POWEREX™

CONFIDENTIAL DISCLOSURE:
This drawing is the property of POWEREX, INC. of Marmon Specialty Products and is subject to return on demand. Its contents are confidential and must not be copied or submitted to outside parties for use or examination.

| DRAWN BY | CHECKED BY | ENGINEERING APPROVAL |
|----------|------------|----------------------|
| SEK | JRD | JRD |
| 4/25/25 | 4/25/25 | 4/25/25 |

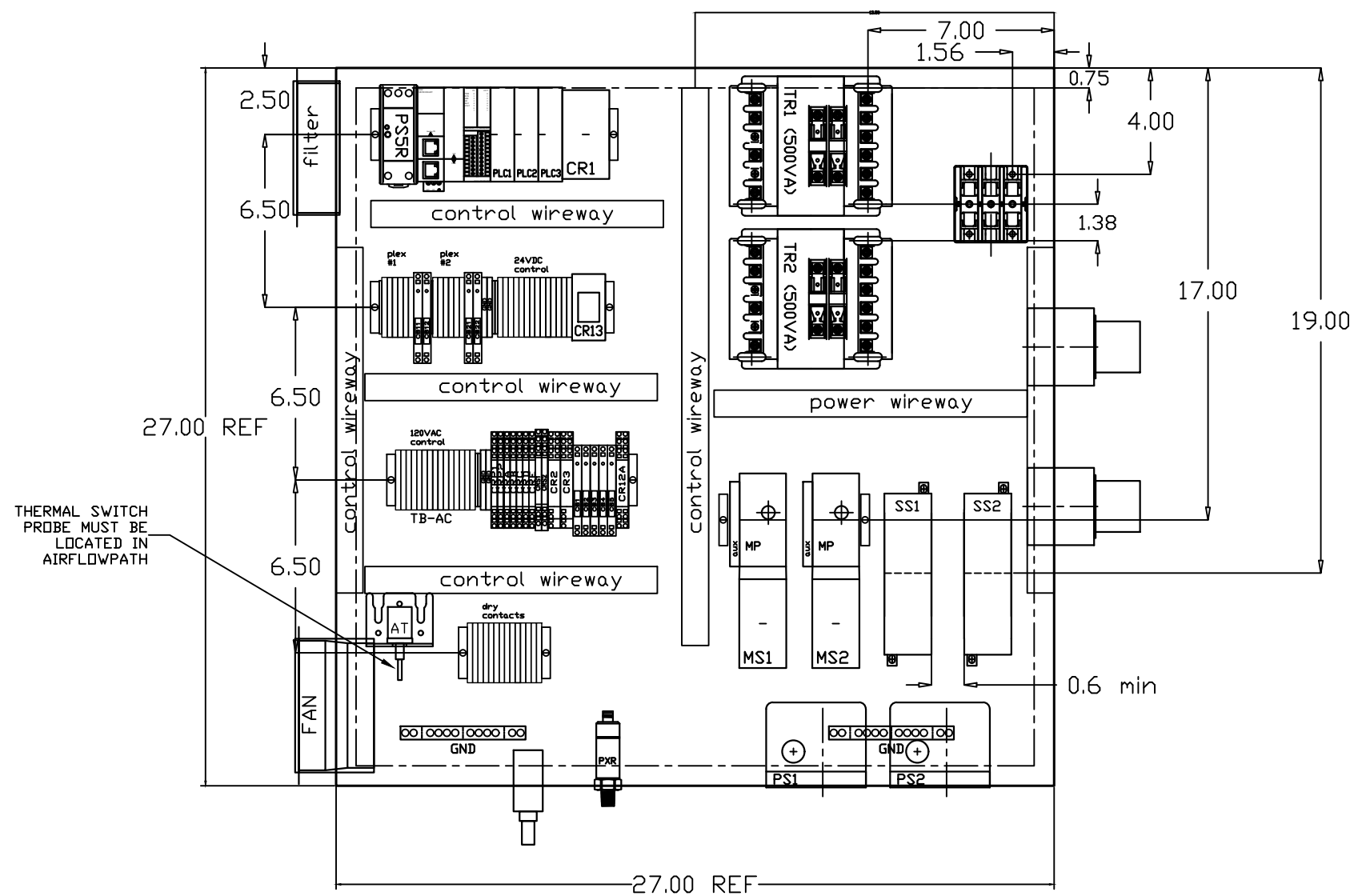
| |
|---|
| PANEL TYPE |
| DUPLEX MEDICAL COMP |
| HMI, BACNET, WEBSVR, NFPA, SOFT START. PLEX ISO |

| |
|-----------|
| DWG. TYPE |
| LAYOUT |

| |
|------------|
| DWG. NO. |
| PXMI-AS216 |

| | |
|-------|------|
| SHEET | SIZE |
| LA-1 | B |

| REV | REVISION | DATE | ECN | NAME | CHKD |
|-----|-----------------------|---------|----------|------|------|
| B-1 | RELEASE TO PRODUCTION | 4/25/25 | PXEC0614 | SEK | JRD |



OPTIONAL:

POWEREX™

CONFIDENTIAL DISCLOSURE:
This drawing is the property of POWEREX, INC. of Marmon Specialty Products and is subject to return on demand. Its contents are confidential and must not be copied or submitted to outside parties for use or examination.

| DRAWN BY | CHECKED BY | ENGINEERING APPROVAL |
|----------|------------|----------------------|
| SEK | JRD | JRD |
| 4/25/25 | 4/25/25 | 4/25/25 |

PANEL TYPE
DUPLX MEDICAL COMP
HMI, BACNET, WEBSRVR, NFPA, SOFT START. PLEX ISO

DWG. TYPE LAYOUT

DWG. NO.
PXMI-AS216

| SHEET | SIZE |
|-------|------|
| LA-2 | B |

| TABLE 1 | P/N | MOTOR FULL LOAD AMPS | TOTAL FULL LOAD AMPS | NON-TIME DELAY FUSE | TIME DELAY FUSE | INVERSE-TIME CIRCUIT BREAKER |
|-------------------|------|-------------------------|-------------------------|------------------------|--------------------|---------------------------------|
| 208V (3Ø) | 72AJ | 21.1 | 44.2 | 90 | 70 | 80 |
| | A2AJ | 26.5 | 55 | 110 | 80 | 100 |
| | | | | | | |
| 230V (3Ø) | 73AJ | 17.9 | 37.8 | 80 | 60 | 70 |
| | A3AJ | 24 | 50 | 100 | 70 | 90 |
| | | | | | | |
| 460V (3Ø) | 74AJ | 8.97 | 19.94 | 40 | 30 | 35 |
| | A4AJ | 12 | 26 | 50 | 35 | 45 |
| | | | | | | |
| 380V (3Ø) 50HZ | 78AJ | 10.7 | 23.4 | 45 | 35 | 40 |
| | A8AJ | 14.5 | 31 | 60 | 45 | 60 |

NOTES:

- RECOMMENDED TIGHTENING TORQUES FOR WIRE TERMINALS:
208-575 VOLT POWER 35 POUND INCHES
120 VOLT POWER AND CONTROL VOLTAGE 15 POUND INCHES
- PANEL GROUND MUST BE CONNECTED TO EARTH GROUND
- INSTALLER TO PROVIDE MAIN DISCONNECTING DEVICE FOR THIS ELECTRICAL ASSEMBLY. SHORT CIRCUIT PROTECTION IS RECOMMENDED. SEE TABLE 1. IF PROVIDING PANEL SHORT CIRCUIT PROTECTION USING TIME DELAY (CLASS J) FUSES, PANEL SCCR IS 65KA. OTHERWISE, PANEL SCCR IS 5KA.
- ALL WIRES MUST BE LABELED ON BOTH ENDS
- TRANSFORMER IS SIZED FOR LOADS SHOWN ON DRAWING ONLY. DO NOT CONNECT ANY OTHER DEVICES
- △ -INDICATES A DRAWING WIRE CONNECTION TO ANOTHER PAGE.
- SERVICE DISCONNECT USAGE - turn HOA switch to OFF position. Turn disconnect OF SAME UNIT to OFF position. Associated PLEX will be isolated for maintenance purposes. After completing maintenance, turn disconnect to ON position and return HOA switch to AUTO. This will return PLEX to normal operation.

| CONTROL TRANSFORMERS - 500VA | | | | | |
|------------------------------|--------------|------|------|-------------|------|
| REPLACEMENT | | 208 | 230 | 460 | 575 |
| FUSE TYPE | | VOLT | VOLT | 380 VOLT | VOLT |
| FU1,2A FU1,2B | FNQR (CC) | 6A | 5A | 5A | 4A |
| FU3A,B | FNM | 7A | 7A | 7A | 7A |
| SEE XFRMR FOR CONNECTIONS | | | | | |

| WIRE TYPE TABLE | | | |
|--------------------|---------------|----------|---------|
| VOLTAGE | WIRE NUMBERS | GAUGE | COLOR |
| 120VAC | 001-599,1100+ | 16-18AWG | RED/BLK |
| 0VAC | W | 16-18AWG | WHT/BLK |
| 24VDC | 600-1099 | 16-18AWG | PURPLE |
| 0VDC | 601 | 16-18AWG | PURPLE |
| GND | - | VARIES | GREEN |
| CUSTOMER SUPPLY | 01-99 | 16-18AWG | YELLOW |

SEQUENCE OF OPERATIONS

During normal operation the PBMI controller will signal the Lead compressor to run when pressure drops below lead cut-in set-point and stop when the pressure reaches the lead cut-out set-point. Lead alternation to the next pump, will occur with each lead run signal or every 10-minutes (which ever happens first). If demand cannot be satisfied by the lead pump, the lag pump(s) will start and stop based upon the lag cut-in and cut-out set-points. When more than one pump is running, lead alternation will occur when the lowest cut-out set-point is satisfied, or after 10-minutes (which ever happens first). The HOA switch’s place the pump in the following modes: Hand-turns pump on to run continuous. Off-disables pump from running. Auto-places pump in the “ready mode” and will start and stop based on sequence described above.

All plex configurations include a hardwired Back-up pressure switch circuit should a control failure occur. This circuit will call all pumps on and off based on the reserve pressure switch set-points.

Expandable systems include all control devices, operators, and programming for the maximum number of pumps (or plex) required. To expand the system: navigate to the “service screen” and enter the number of pumps.

Additional information and descriptions can be accessed through the HMI “service info” screen by pressing Sequence of Operations button.

OPTIONAL:

208V/230V/460V/380V/575V

CONFIDENTIAL DISCLOSURE:
This drawing is the property of POWEREX INC of the SCOTT FETZER COMPANY and subject to return on demand. Its contents are confidential and must not be copied or submitted to outside parties for use or examination.

| | | |
|----------|------------|----------------------|
| DRAWN BY | CHECKED BY | ENGINEERING APPROVAL |
| KMD | DMS | DMS |
| 07/24/14 | 07/24/14 | 07/24/14 |

PANEL TYPE

7. 5/10 SCROLL DATA
DUPLEX PANEL DATA

DWG. TYPE MISC

DWG. NO.

DATA TABLE

| | |
|--------------------|------|
| SHEET | SIZE |
| D-1 | B |
| SCROLL 7-10 DUPLEX | |